



Monitoring

Operator's Guide

1. Operator's Guide. Introduction	4
2. Control Panel	4
2.1 Purpose of the Control Panel	4
2.2 Changing alarm group icons	5
2.3 Current display time	6
2.4 Ignoring objects	6
2.5 Processing alarms	6
2.5.1 Confirming alarms	6
2.5.2 Confirming multiple same-type alarms	8
2.5.3 Additional information on alarms	9
2.5.4 Alarm types	9
2.5.5 Defining user alarm types	11
2.5.6 Configuring the Displayed Number of Alarms	11
2.6 Viewing video data on alarms	12
2.6.1 Indication of video data presence	12
2.6.2 Viewing video data	12
2.6.3 Video data grouping setup	13
2.6.4 Setting video data list filter	15
2.7 Event log	17
2.7.1 Viewing comments	17
2.7.2 User that confirmed an alarm	18
2.7.3 Event display period	18
2.7.4 Exporting the event log	18
2.7.5 Configuring the position of the event log's columns	19
2.8 Regulatory and reference information	19
2.8.1 Viewing regulatory and reference information	19
2.8.2 Editing regulatory and reference information	20
2.8.3 Filling out reference books	20
2.8.4 Column context menu in the Monitored objects window	22
2.9 Viewing objects' live video and archives	23
2.9.1 Playing back live video and archive from a specific camera	24
2.9.2 Playing back live video and archive from all cameras	25
2.9.3 Playing back live video and archive from selected cameras	26
2.9.3.1 Creating, editing and deleting layouts	26
2.9.3.2 Selecting layout for display	30
2.10 Starting external applications from the Control Panel	31
2.11 Executing ad hoc command on the Agent of Control by the operator of Server of Control	33
3. Log Panel	35
3.1 Log Panel's interface	35
3.1.1 Color definitions for events	35
3.1.2 Moving through the list of alarms	36
3.1.3 Ignoring objects	37
3.1.4 Status bar	37
3.2 Number of alarms displayed	37
3.3 Object status	38
3.4 Alarm duration	38
3.5 Information about an object	38
3.6 Exceeding the allowed number of failures	40
3.7 Forcing the confirmation of alarms	40
4. Owner Panel	41
4.1 Owner Panel interface	41
4.2 Objects displayed on the Owner Panel	41
4.3 Viewing Event log for all objects	42
4.4 Viewing details on alarms for all system objects	42
5. Alarm message window	42
6. Search in archive	43
6.1 Purpose of the Search in archive component	43
6.2 Request to a video archive by subtitles	44

6.3 Request to a video archive by video clips	45
6.4 Request for video frames from an object	46
6.5 Request for video clips from objects	47
7. Monitoring Reports	50
7.1 Purpose of Monitoring Reports	50
7.2 Hardware failures reports	50
7.3 Alarms reports	54
7.4 Video report	56
7.5 Statistical reports	60
7.6 Statistical reports by owners	66
8. Controlling unregistered objects	67
9. Appendix 1. Data update periods summary	68
9.1 Data loading from database to the interface objects	68
9.2 Data loading to the database	68
9.3 Sending data from Agent of Control to Server of Control	68
9.4 Data transmission scheme	69
9.5 Features of displaying information on short-term and long-term alarms	69
9.6 Agent of Control technical condition data collection periods	69

Operator's Guide. Introduction

On page:

- Purpose of Monitoring
- Document purpose

Purpose of Monitoring

Monitoring is designed to automate the activities of personnel at service companies involved in the operation of *Intellect*-powered video surveillance systems. The purpose of *Monitoring* is to improve the quality of operation for such video surveillance systems.

Document purpose

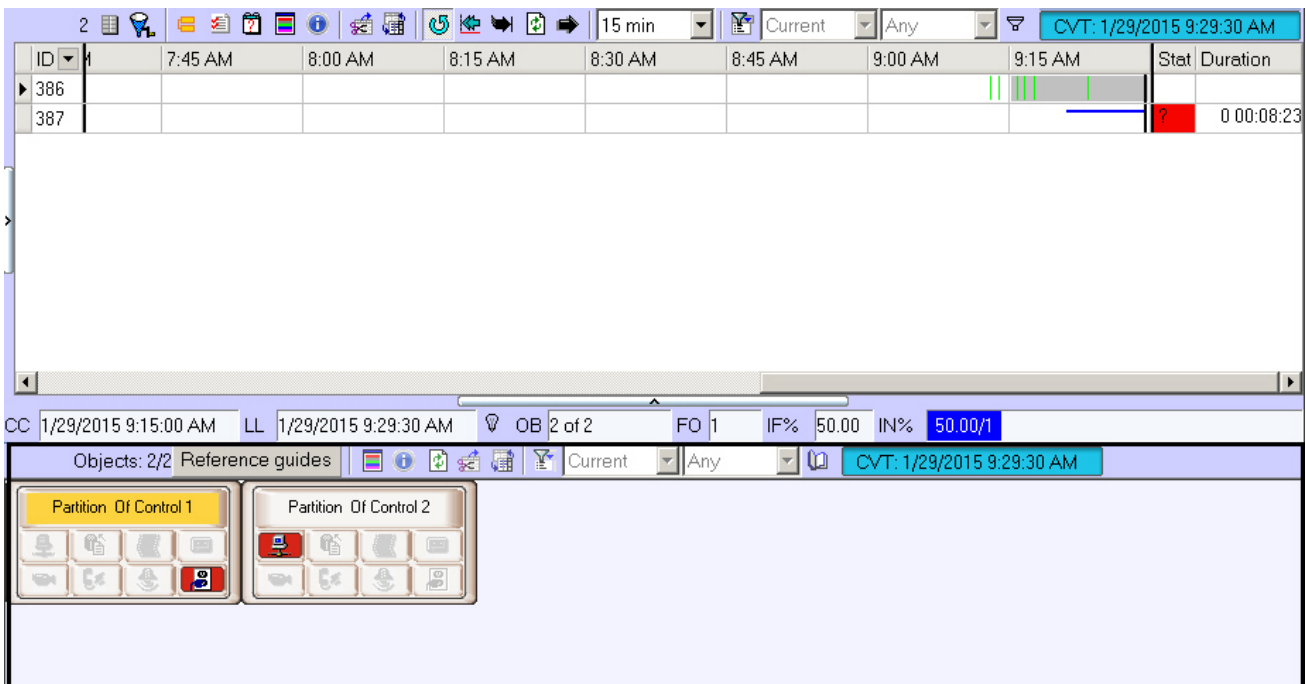
The document is intended for Operators working with *Monitoring*.

This User's Guide describes how to work with *Monitoring*'s main graphic user interface (GUI) objects.

Control Panel

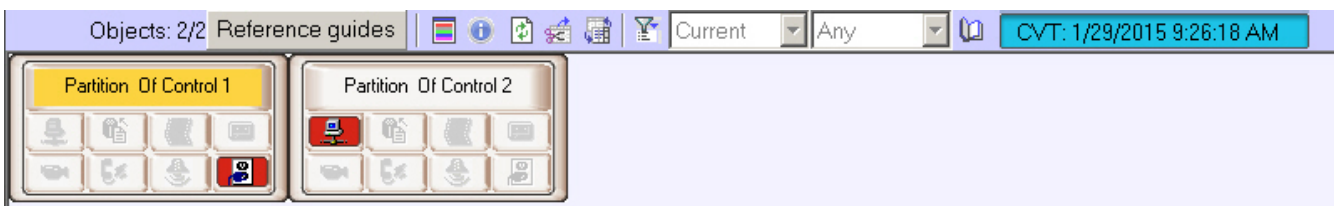
The Control Panel is part of the **Monitoring** interface window. You can configure this window using the setting panel for the **Monitoring** object. For how to do it, see the document *Monitoring Software Package. Administrator's Guide*.

You can see the Control Panel in the figure below.



Purpose of the Control Panel

The Control Panel is intended for quickly assessing the current status of video surveillance components.



Each object has a corresponding graphic element shown as a rectangle. It contains the object's identification area (at the top) and a configurable number of alarm indication buttons arranged in groups by source type:

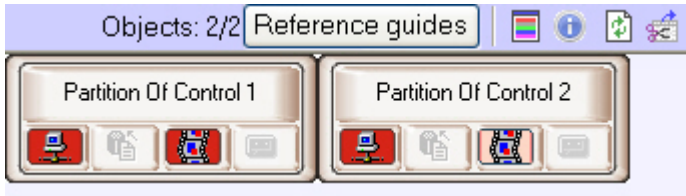
1. Communication Channel.
2. Hardware.
3. Video System Software.
4. Size of Archives.

- 5. Cameras.
- 6. ACS.
- 7. FSA.
- 8. Detection tools/Detectors.
- 9. Thermal Sensors.

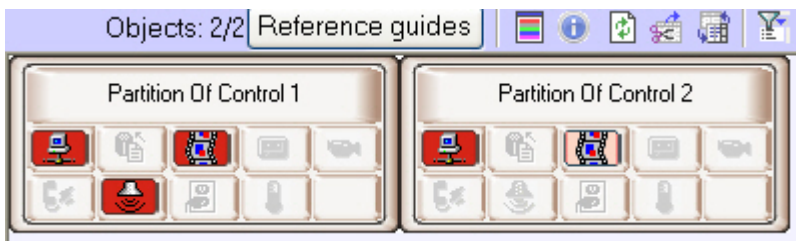
If the **Owner panel** is enabled (see [Configuring the Monitoring interface object section of Administrator's Guide](#)), then only the objects that belong to the selected owner are displayed on the Control Panel.

The number of shown alarm groups can change from 4 to 9, depending on the **Monitoring** object settings on the **Interface** tab.

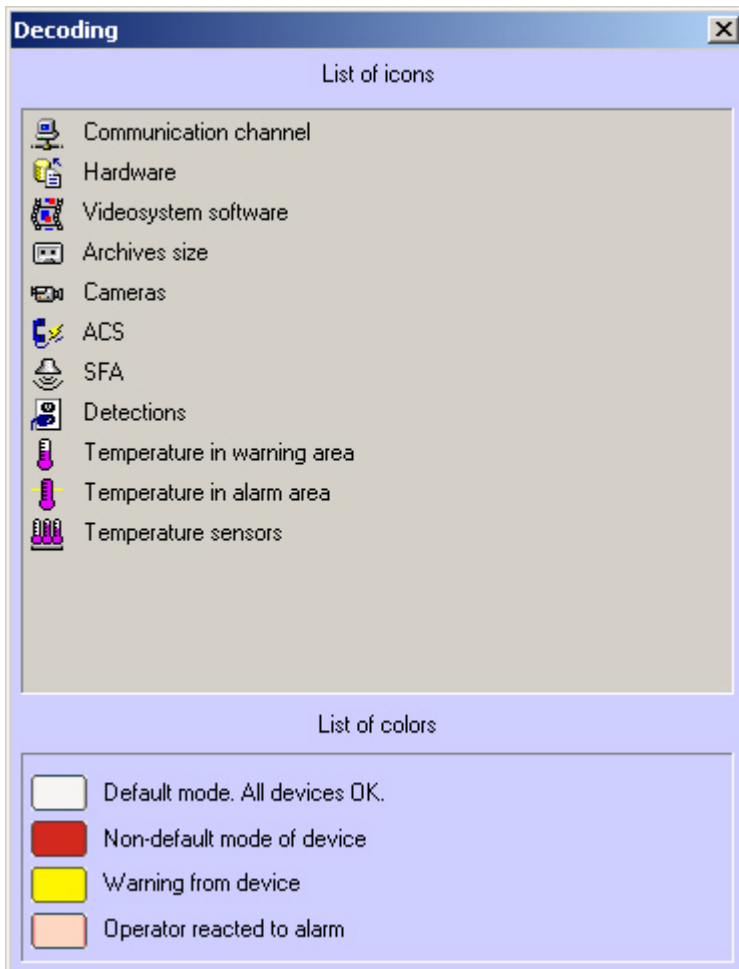
Four alarm groups.



Nine alarm groups.



You can learn the meaning of the icons by clicking the button  (**Legend information**). When you click this button, the **Definitions** window opens.



Changing alarm group icons

You can change the default icons for each alarm group and assign your own icons. To change an icon, replace the corresponding default picture file in the package. You can find the files in the Bmp subfolder of *Monitoring's* installation folder. The default path to the folder with pictures is C:\Program Files\Intellect\VHost\Bmp. For example, to change the icon for the Communication Channel group, replace two files:

1. Bmp\Active\01_net_active.bmp;
2. Bmp\InActive\01_net_inactive.bmp.

The size of active icons is 16x16 pixels. The size of inactive icons is 17x17 pixels. If the size of your image is different, it will be changed to the above. Use the clFuchsia (RGB=255,0,255) color as the mask for transparent areas in active icons.

After you replace graphic files, restart *Intellect*. If at least one of the files is missing from the Bmp folder or has illegal format, the default icons are used.

Current display time

The information in the Control Panel is refreshed every time data is loaded from the database. The current view time (CVT) is shown in the window's upper-right corner.



Periods of information updating in the interfaces can vary for particular alarm types – see [Appendix 1. Data update periods summary](#).

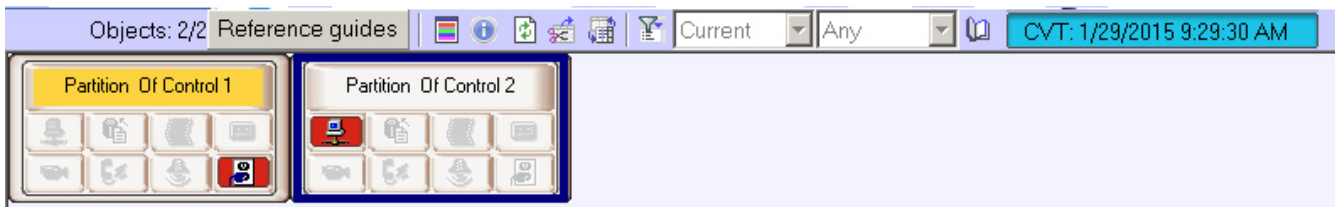
To get the latest database information, click the button  (**Refresh data**). This forces the data to load. If new data is found, it is shown.

Ignoring objects

You can put the objects that must not be shown on the ignored objects list. For example, these can be objects that were created on *Monitoring's* server, but not launched yet or objects that are known for sure to be under maintenance at the moment.

The objects on the ignored objects list are not shown in the Control Panel or rLog Panel. They are also not included in system reports.

To move an object to the ignored objects list, press the Shift key and left-click on one or multiple objects. The selected objects are now highlighted with a dark blue border.



Then click the button  (**Ignore/Analyze**).

You can see the ignored objects list by clicking the button  (**Show ignored objects**).

Use the same actions to move objects back from the list.

Processing alarms

Confirming alarms

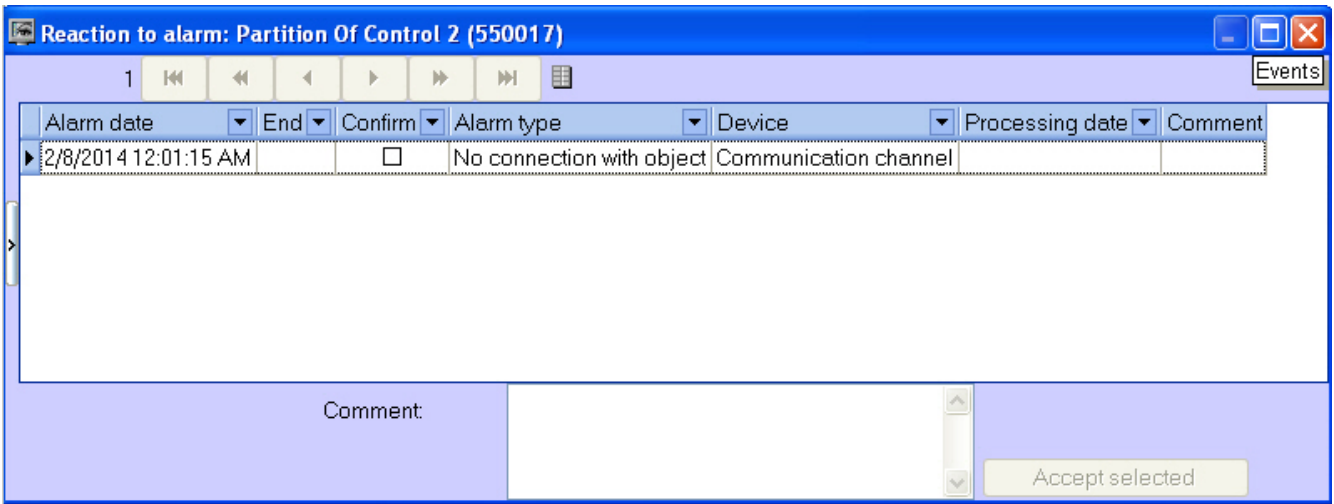
You can use the buttons of alarm indicators both to get information and perform an action:

1. Information: in the event of an alarm, a button becomes red; when an operator confirms the alarm, it becomes pink, and after the alarm is over, the button gets back to the inactive state.
2. Action: By clicking a button, the operator gets details for the device or event.

For example, if a camera is broken, the indicator button for the **Cameras** alarm group becomes red.



To get the details about an alarm, click the alarm's icon. The **Reaction to alarm** window opens.

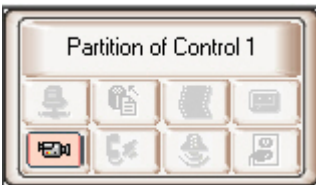


The title of the window contains the selected object's name and ID.

In the **Alarm date** field, the time when *Server of Control* had loaded the alarm from *Agent of Control* to the database. This is not the time when the alarm appeared on the *Agent of Control*. For more information on data transmission see section [Appendix 1. Data update periods summary](#).

The **Alarm type** field contains the name of the alarm, and the **Device** field gives details on the device or event.

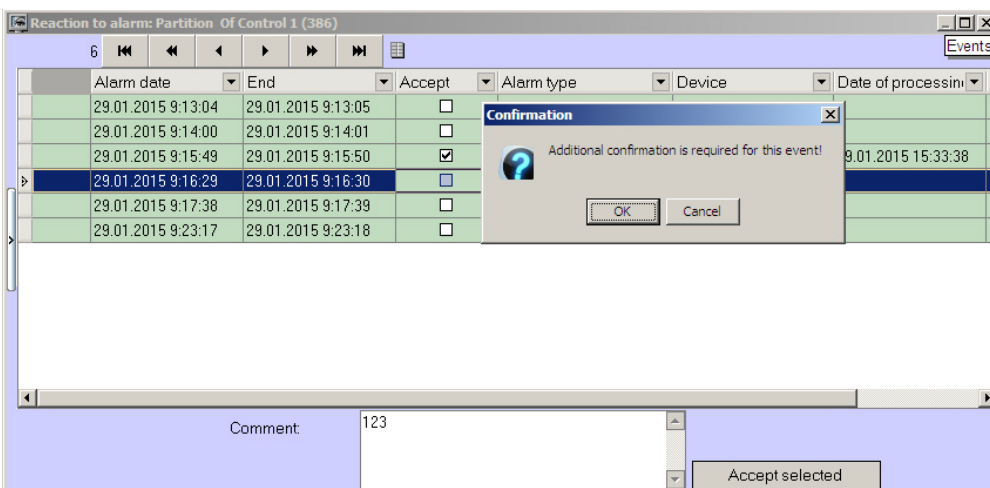
If you check the **Confirm** box in the **Reaction to alarm** window, the icon's background in the Control Panel changes from red to orange and the **Processing date** column is automatically filled.



Note that the **Processing date** column will contain not the current computer time, but the current display time (see the [Current display time](#) section) stored in the database. This ensures that the operator cannot roll back the system time to confirm the alarm with a different time.

If when configuring the **Monitoring** interface object, you check the **Non-empty Comment field** check box, alarms are not closed until an operator comments on them or his/her actions. Any alarm is closed automatically after its cause is resolved (for example, the connection was broken and then restored).

If a complex confirmation of alarm acceptance is configured, then an additional dialog box appears. To confirm the alarm acceptance click the **OK** button, to cancel the action click the **Cancel** button.



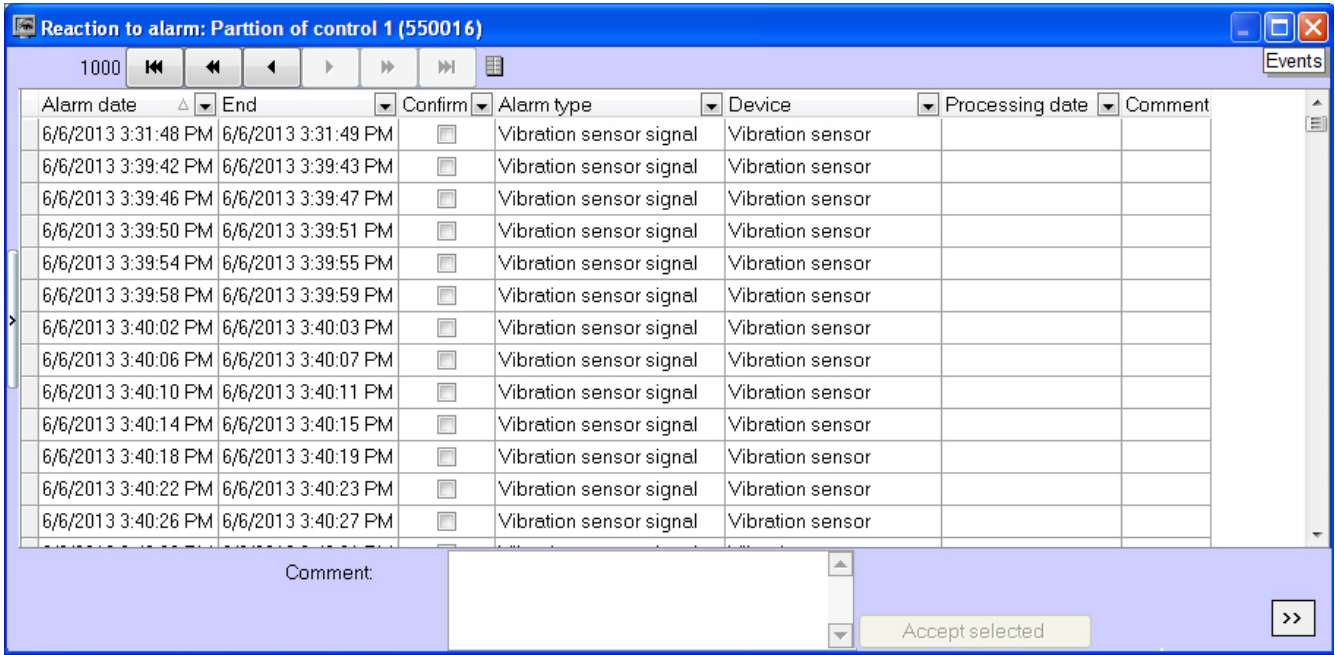
Confirmations of alarms that have been automatically accepted by the *Server of Control* are not sent.



Note.

If the operator does not accept a short alarm for 5 days, it is accepted automatically.

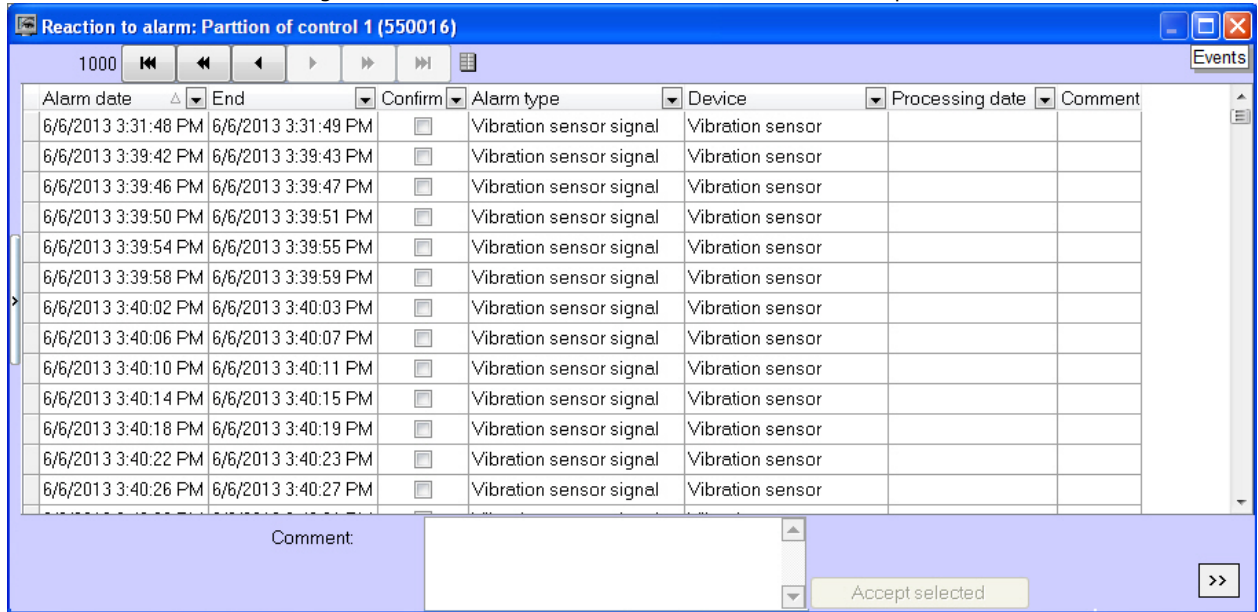
If you have many alarms at the same time, not more than 1000 alarm events are shown in the **Reaction to alarm** window. To view other events, use the navigation buttons in the lower-right corner.



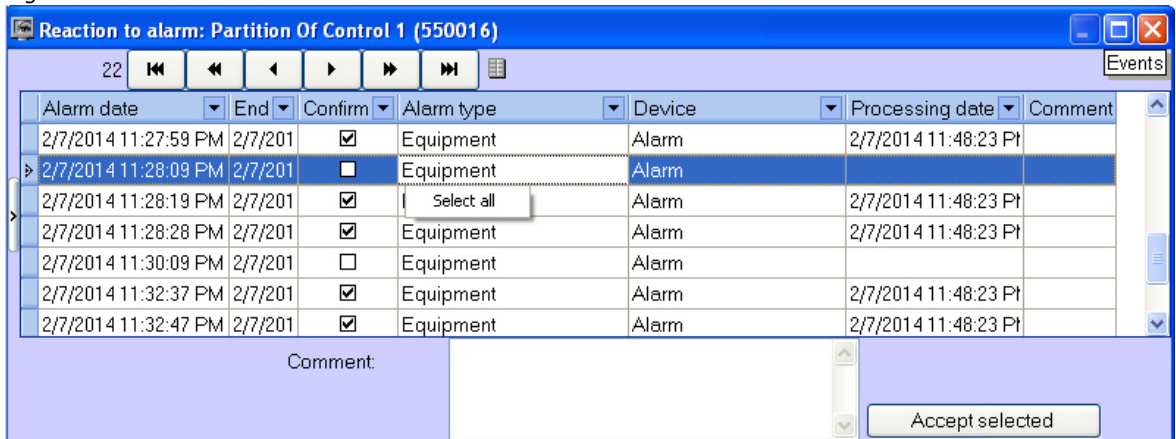
Confirming multiple same-type alarms

You can confirm multiple same-type alarms at once. To do this, follow the steps below:

1. Click the icon that is informing about the alarm. The **Reaction to alarm** window opens.



2. Select multiple entries in one of the following ways:
 - a. Use the left mouse button and the Ctrl or Shift key.
 - b. Right-click on the list and click **Select all** item in the menu.



3. Fill in the **Comment** field if necessary.

4. Click **Accept selected**.



Note.

If a comment is required and the **Comment** field is not filled in, the **Accept selected** button is disabled.

If a simple confirmation of alarm acceptance is configured, then only one confirmation is sent to the *Agent of Control* when a group of alarms is accepted on the *Server of Control*. If there should be a complex confirmation, then several alarms of the same type cannot be accepted. Each alarm is to be processed individually.

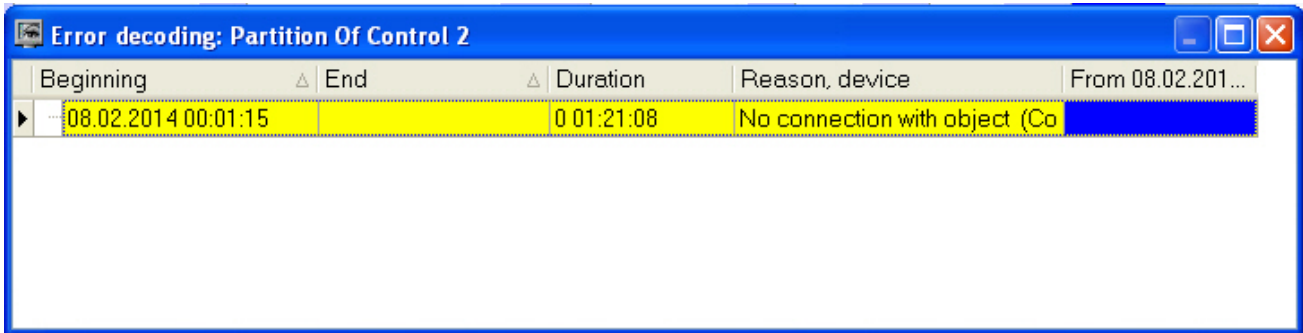
Multiple similar alarms are now confirmed.

Additional information on alarms

You can get additional information on alarms by clicking on the object name.



The **Error decoding** window opens.



Alarms caused by different reasons can overlap, creating common alarm periods for the object. In the table, they are shown in gray. If an alarm is still active, its **End** column is empty.

If there are too many alarms, not more than 200 alarms are shown in the **Error decoding** window. To view other events, use the navigation buttons and the additional tool **View from date** in the lower-right corner.

Alarm types

The following table contains all the alarm types that are controlled by the monitoring system by default. For **Communication on channel** alarm group: if *Agent Of Control* connects to *Server of Control* via the TCP/IP protocol and it has connected to it before, the **Device** field shows the object's IP address.

Alarm group	Alarm type	Device	Comment
Communication channel	No connection with the object	Communication channel	<i>Agent Of Control</i> connects to <i>Server of Control</i> in client mode
	No connection with the monitoring agent	Local video system	<i>Agent Of Control</i> connects to <i>Server of Control</i> in server mode
Hardware	Disk failure	101:Disk name	<i>Intellect's</i> settings contain the names of the disks to record video archive on. This alarm occurs when one of these disks does not exist or has the wrong type. The correct type for a disk: fixed, removable, or network.
		102:Disk size	Error when computing the free disk space
		103:VIDEO folder	The VIDEO folder is not present
		104:Number of disks=0	No disks were selected in <i>Intellect</i> for recording the video archive.
		105:Disk error	An unknown disk error was received from <i>Agent Of Control</i>

	UPS signal	1000:PowerChute started 1001:PowerChute stopped 1002:Connection restored 1003:Power restored 1004:Self-Test passed 1005:Administrative shutdown 1006: Shutdown canceled 1007:Battery charged 1009:Battery changed 1013:Allowed overload 1014:RTC Started 1015:RTC Finished 1016: Shutdown in process 1102:Normal temperature 2000:Power is off 2001:Shutdown performed 2002:Low power 2003:Battery discharging 2004:RTC Aborted 2007:High power 3000:Connection lost 3001:Overload 1004:Self-Test not passed 3003:Battery discharged 3004:Connection lost - battery 3016:Change battery 3107:High temperature	
Video system software	Software error	Core software	intellect.exe unloaded
		Base software (video)	video .run unloaded or hanging
		Registry	The registry does not have the data necessary for <i>Agent Of Control</i> to work
		Database	Error when connecting to the <i>Intellect</i> database
Size of archives	Small archive size	Archive 1 ... Archive 32	The archive depth requirements are not met for camera # 1..32. If an object has more than 32 cameras, create an additional Partition of Control on <i>Agent Of Control</i> .

Cameras	Camera is off	Camera 1 ... Camera 32	Camera # 1..32 is not working. If an object has more than 32 cameras, create an additional Partition of Control on <i>Agent Of Control</i> .
FSA	Vibration detector signal	Vibration detector	The four sensors that cannot be renamed on <i>Agent Of Control</i> i. e. they must be used according to their names (Vibration detector, Lock, etc.).
	Lock sensor signal	Lock	
	Overheat detector signal	Overheat detector	
	Additional sensor signal	Additional sensor	
	Additional sensor signal	EXT. SENSOR	12 sensors whose names must be renamed on <i>Agent Of Control</i> These names are shown in the Device column. By default, the following line will be shown: EXT. SENSOR
	Computer restarted normally	Computer	Logged off from Windows normally before restarting
	Computer restarted abnormally	Computer	The computer was restarted without logging off from Windows correctly (power off)
Thermal sensors	Thermal sensors are off	Set of thermal sensors	The adapter (DS2480B) that processes information from the thermal sensors is down.
	Temp.: warning	Set of thermal sensors	A thermal sensor's (DS18S20) temperature is close to the temperature that causes an alarm. The indicating button is yellow.
	Temp.: alarm	Set of thermal sensors	A thermal sensor's (DS18S20) temperature reached the temperature that causes an alarm.



Note.

Periods of information updating in the interfaces can vary for particular alarm types – see [Appendix 1. Data update periods summary](#).

The alarms tracked by the monitoring system can be of two types:

1. Long-term.
2. Short-term.

Long-term alarms are alarms that have a start and end time (for example, **Camera is off/Camera is on, No connection with object/Connection with object**).

Short-term alarms have no duration. They inform about occurred events, such as **Vibration detector triggered** or **Computer restarted normally**. These alarms are not included when the system's performance indicators are calculated.

Alarms that are configured as described above (in the abandoned object detector example) are always short-term. For short-term alarms, the **Ended** field is immediately filled with a time shifted by one second from the alarm detection time. Confirmed short-term alarms are shown in the Control Panel for 10 minutes. Long-term alarms include the following alarm types:

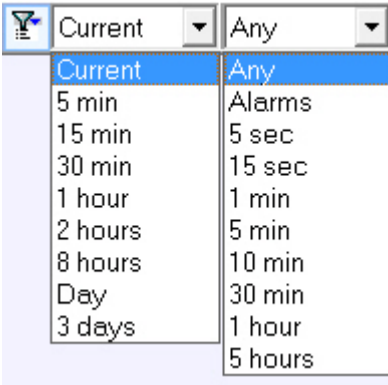
- No connection with object;
- No connection with monitoring agent;
- Disk failure;
- Software error;
- Small archive size;
- Camera is off;
- Thermal sensors are off.


Defining user alarm types

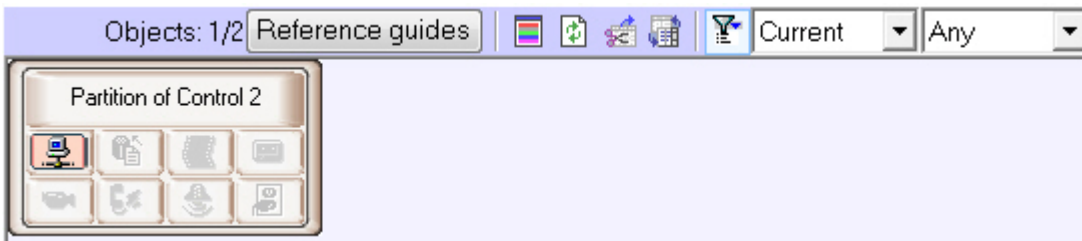
For the **ACS** and **Detections** alarm groups, by default no data is sent from *Agent Of Control*. These alarm groups, as well as **Hardware** and **FSA**, can be used for designating their respective alarm types. For how to define user alarm groups, see the document [Monitoring. Administrator's Guide](#).

Configuring the Displayed Number of Alarms

The number of objects shown in the Control panel is defined by the current filter. You must enable the filter by clicking the button (**Turn filter on/off**). The first drop-down list defines the condition *Show only objects with errors for last...*, and the second one defines the condition *Show only objects with errors lasting longer than...*



In the window's upper-left corner, you can see the two numbers: 1) the total number of objects and 2) the number of objects shown in the Control Panel after you click the  button.



Viewing video data on alarms

Indication of video data presence

In *Monitoring* software, the alarms can be followed by video data, such as video clips and video frames.

If there are loaded but not viewed yet video data, the name of the object on the Control panel is colored in orange.

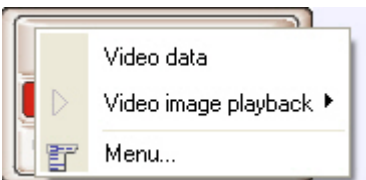


Viewing video data

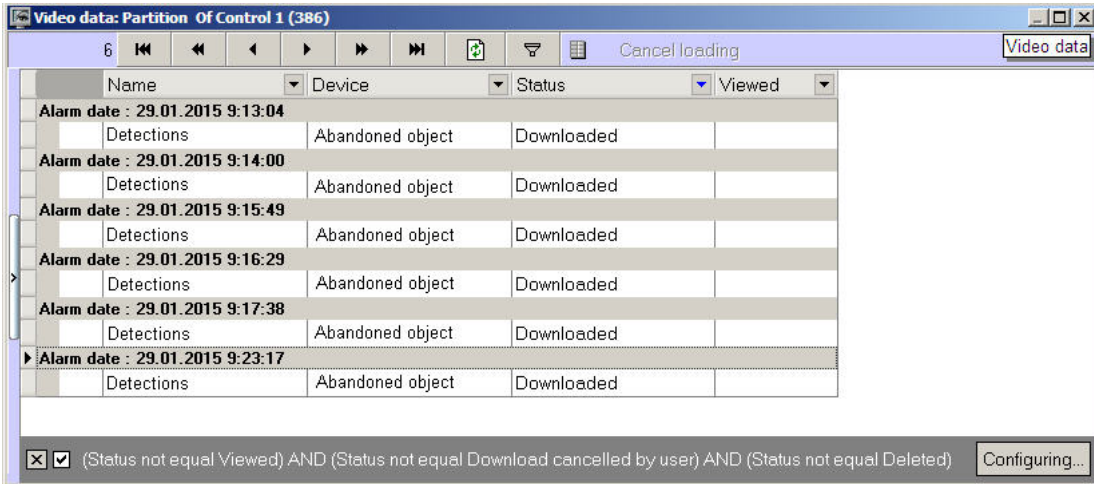
To view all received video data, select the **Video data** item in the object context menu.


 **Note.**

Depending on the *Monitoring* software settings (see [Monitoring. Administrator's Guide](#)) the received video frames and video clips can be automatically opened immediately after they have been received.

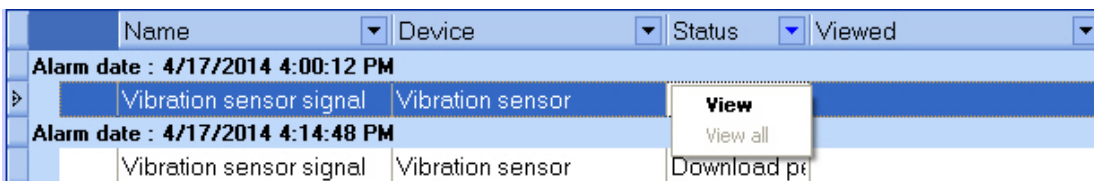


The **Video data** dialog box opens. The information on video data is displayed in this dialog box. This dialog box also provides function to cancel data downloading, if it has not been completed yet, using the **Cancel loading** button.



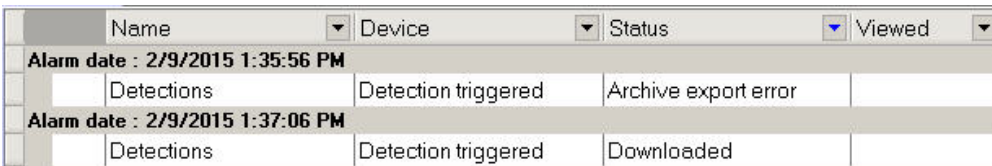
To force an update of the information in the **Video data** dialog box, click the .

To open the loaded video data right-click in the row corresponding to required data and select the **View** item. If the data download is not completed, this item is inactive.



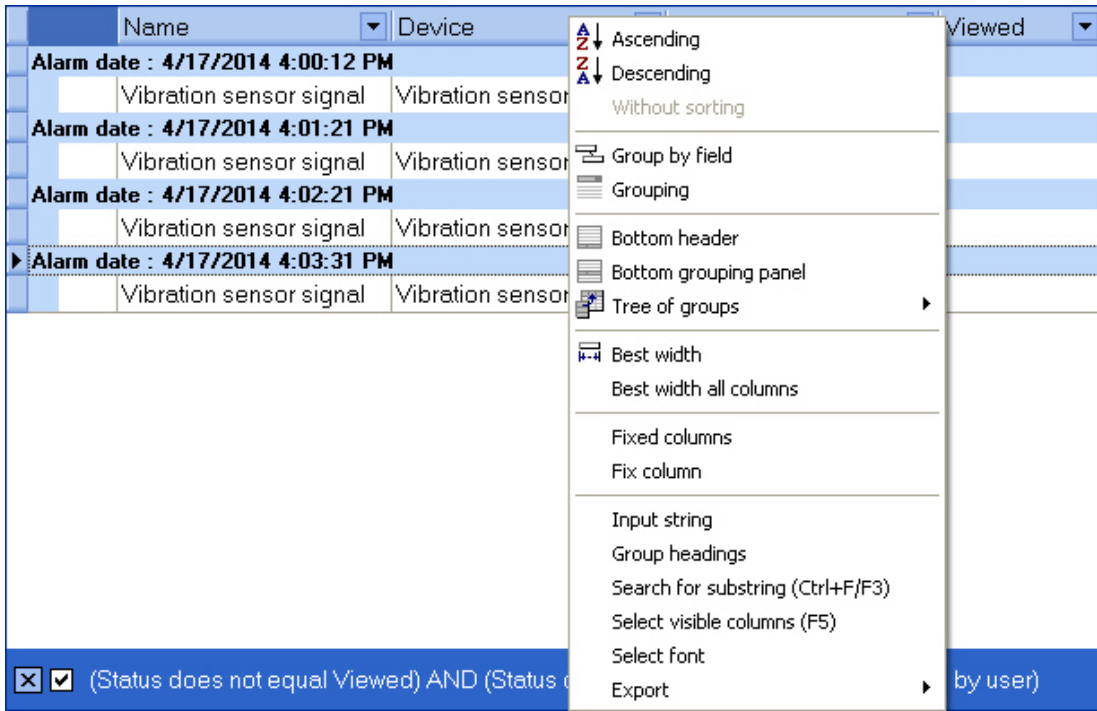
When the **View** item is selected, a video frame is opened with utility selected at the *Monitoring* setup and a video clip is opened with *Axxon Player* utility. Video data status changes to "Data viewed" and in the **Viewed** column the date of viewing is displayed.

If video data export fails, then there is the **Archive export error** message in the **Status** column.

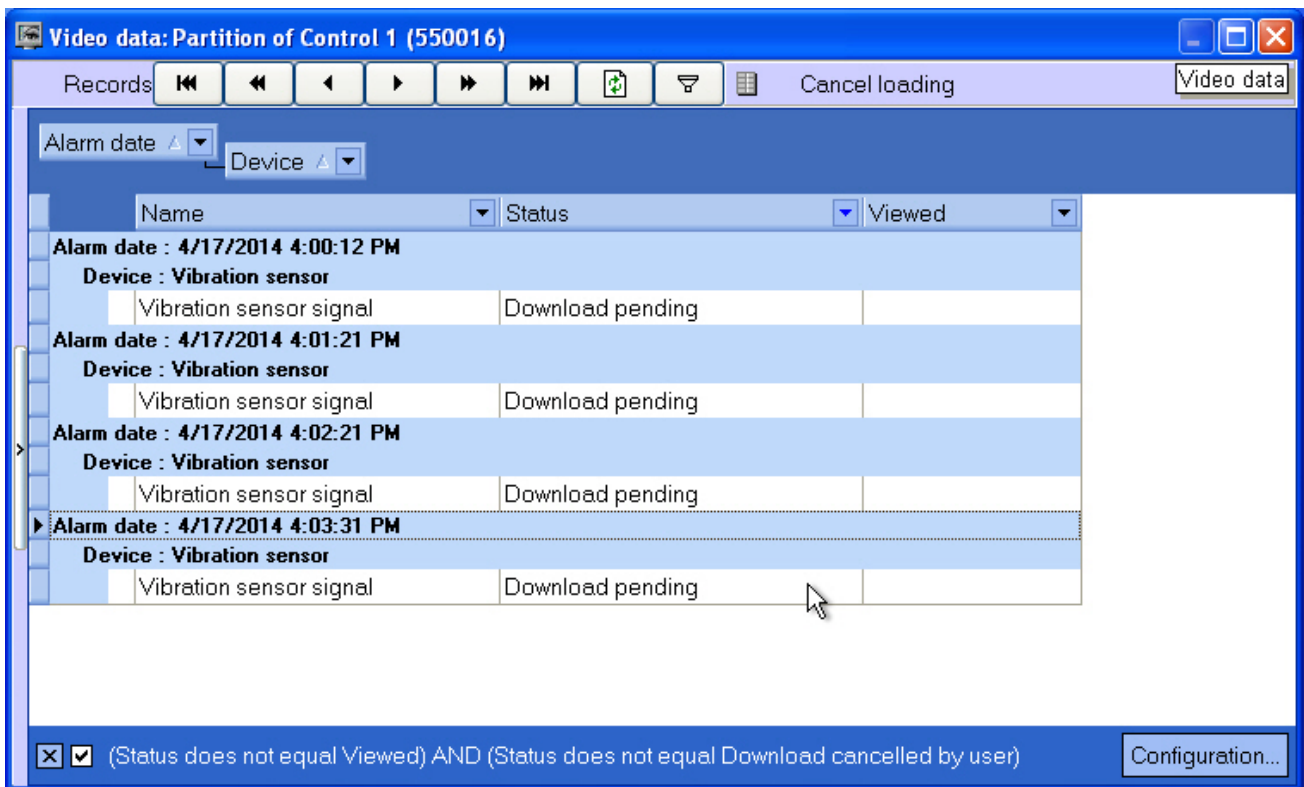


Video data grouping setup

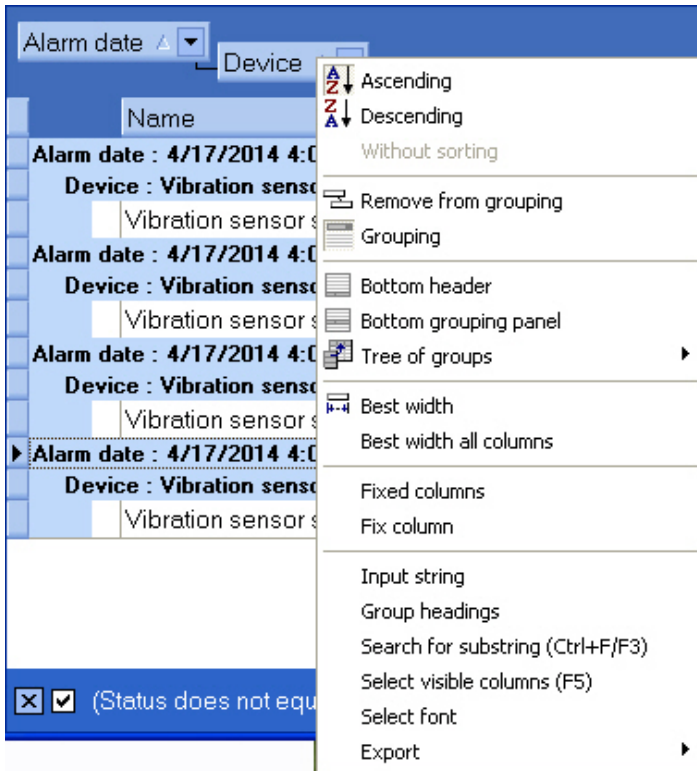
By default, video data are grouped by alarm time. If necessary, it is possible to set video data grouping by other parameters. To do so, in the context menu of a column, by which one need to group the data, select **Group by** field.



Data will be grouped by selected field. In the upper part of the dialog box the fields by which the video data are grouped are displayed - a grouping area. To view this area one can also select the **Grouping** item in a column context menu.




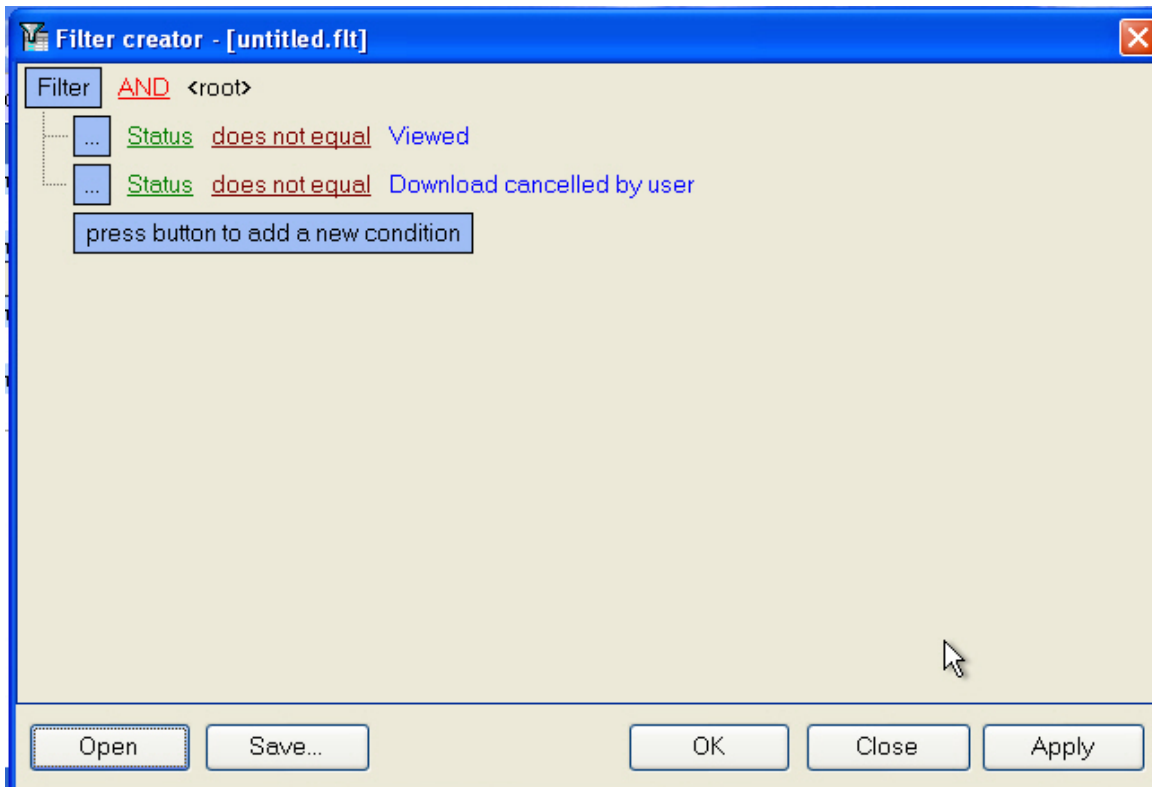
To cancel grouping by a field, right-click on it and select **Remove from grouping**.



Setting video data list filter

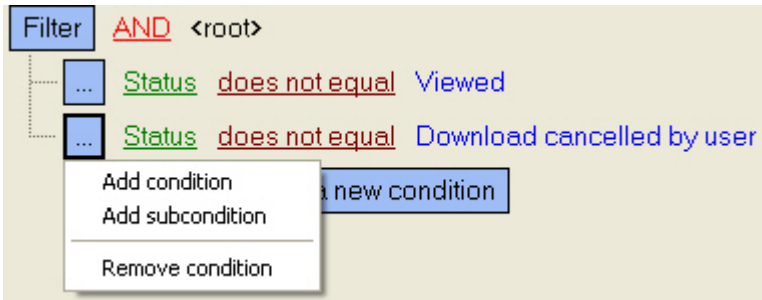
By default, in the **Video data** dialog box the data are not displayed, which has been viewed or for which downloading has been canceled by a user. To display all the video data, unset the checkbox in the lower left corner of the **Video data** window.

It is also possible to setup the filter for video data displaying. To open the filter setup dialog box, in the **Video data** dialog box click **Configuration...** or . The **Filter creator** dialog box opens.

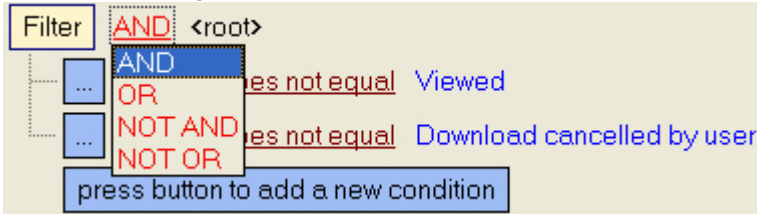


When configuring the filter, one may need to perform the following operations:

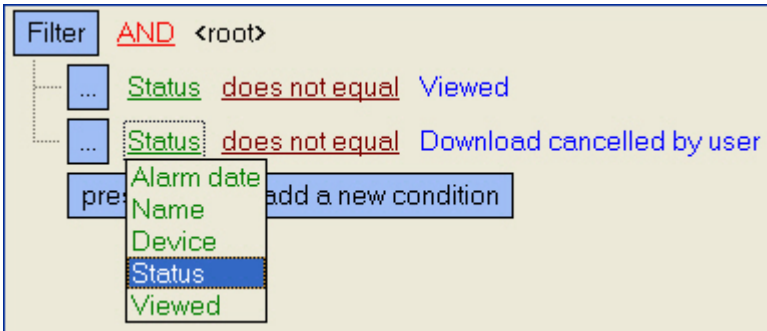
1. Add a condition or subcondition. To add a condition click the **click to add a new condition** button or in the filter menu click the corresponding item. The condition menu opens by clicking the **...** or **Filter**.



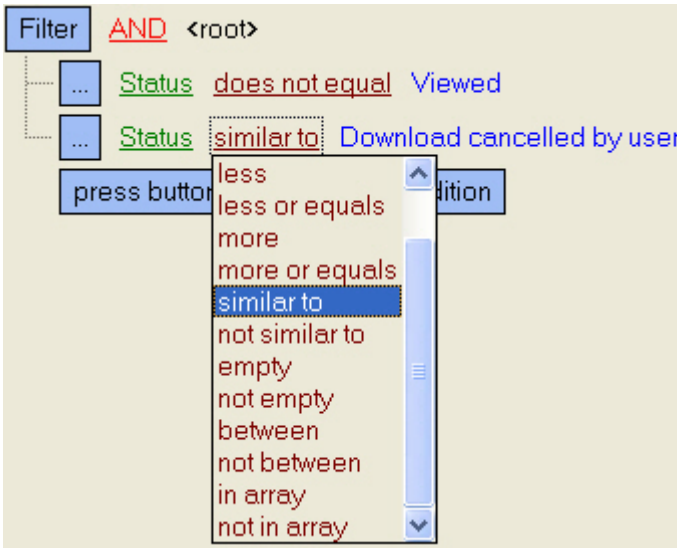
2. Remove a condition. To remove a condition, click the corresponding item in the condition menu.
3. Select a logical function for combining conditions. A drop-down list for selecting the logical function opens on the left-click on the logical function.



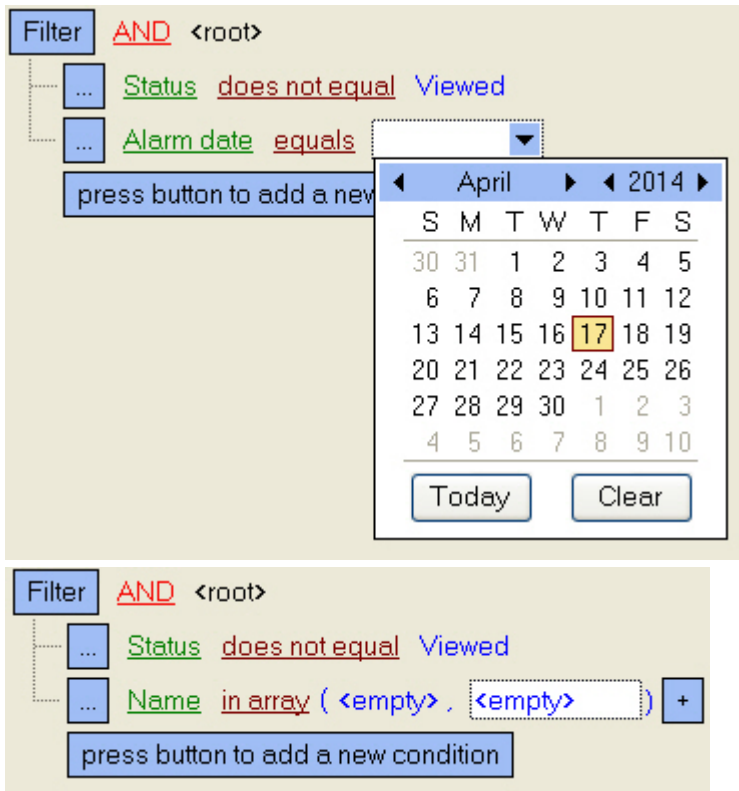
4. Select a field for comparison. A drop-down list for selecting the field for comparison opens on the left-click on the field name.



5. Select a method of comparing. A drop-down list for selecting the method of comparing opens on the left-click on the method name.




6. Select a value for comparing with. A way to select the value depends on the field type. For example, a date can be set using a calendar, a name can be entered in a field, etc.



After completing settings, the filter can be saved to a file with the .flt extension by clicking the **Save...** button. This file can then be opened using the **Open** button.

Event log

To view all the events registered in *Monitoring*, click the button  (**Event log**). The **Event log** window opens. You can sort and filter this table by any column.

Alarm date	End	Name	ID	Confirm	Alarm type	Device	Process
2/8/2014 12:01:15 AM		Partition Of Control 2	550017	<input type="checkbox"/>	No connection with object	Communication channel	
2/8/2014 12:08:55 AM	2/8/2014	Partition Of Control 1	550016	<input checked="" type="checkbox"/>	No connection with object	192.168.56.1	2/8/2014
2/8/2014 12:21:42 AM	2/8/2014	Partition Of Control 1	550016	<input checked="" type="checkbox"/>	No connection with object	192.168.56.1	2/8/2014
2/8/2014 12:24:19 AM		Partition Of Control 1	550016	<input type="checkbox"/>	Temperature sensors off	Set of temperature sens	

View from date: 2/8/2014

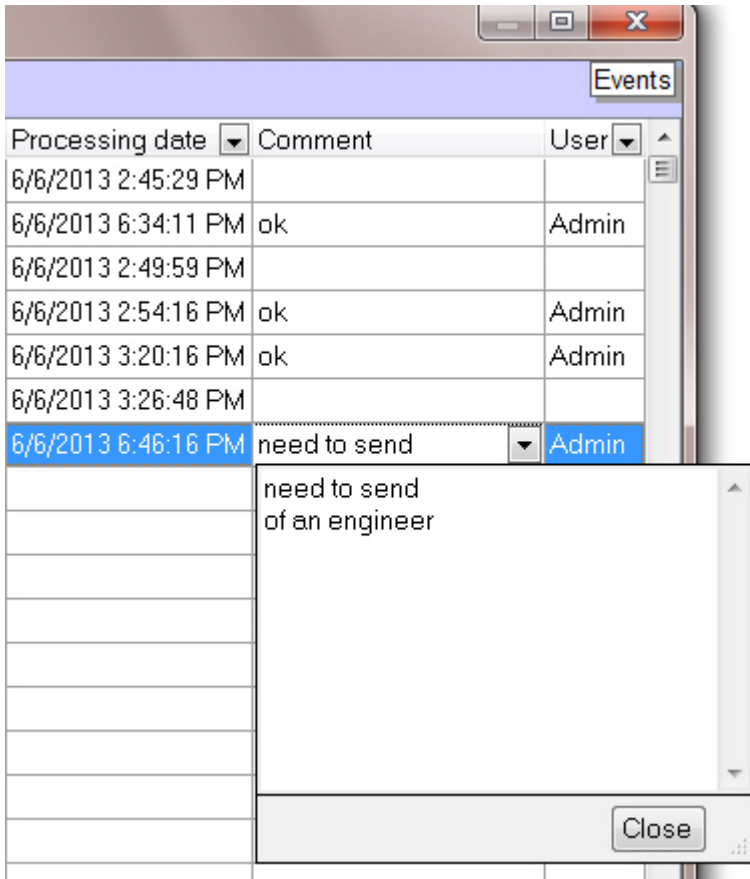
Note.

If the Owner Panel is in use, then events from the objects that belong to the owner selected on the Owner Panel are displayed in the **Event log** window. To view the events from all system objects, call this window on the Owner Panel – see *Viewing Event log for all objects*.

Viewing comments

If an operator enters a multi-line comment when he closes an alarm, only the first line is shown in the **Comment** column in the **Event log** window.

To view the entire comment, click the relevant cell.

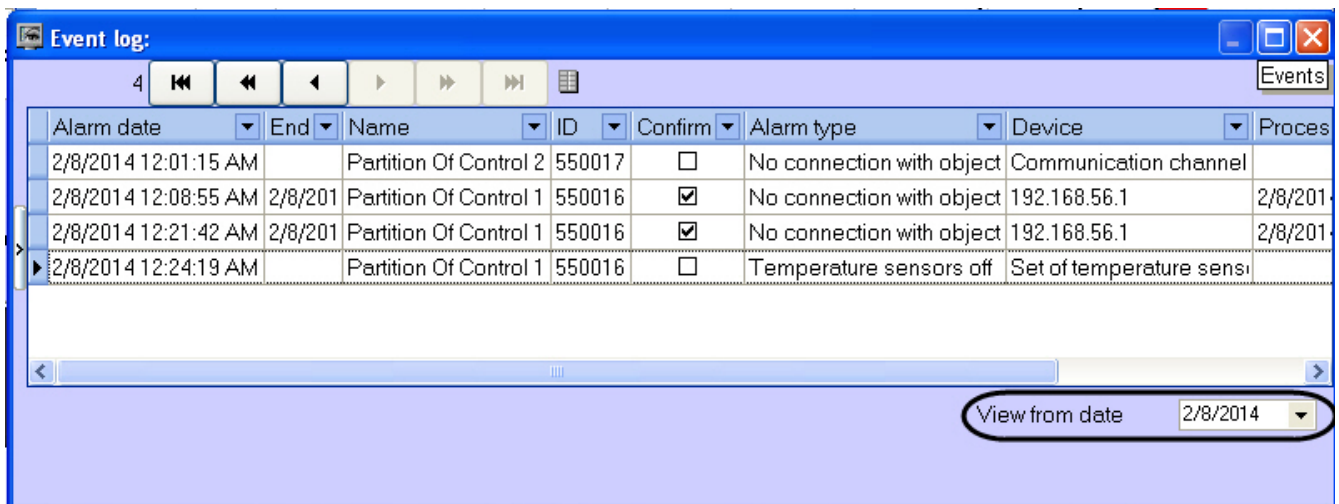


User that confirmed an alarm

By default, all the alarms confirmed by an operator are registered by the Admin user. However, a user with certain privileges can be created in the **Users** tab. Then, when an operator starts *Intellect* using this user's account, all the confirmed events are registered using this user.

Event display period

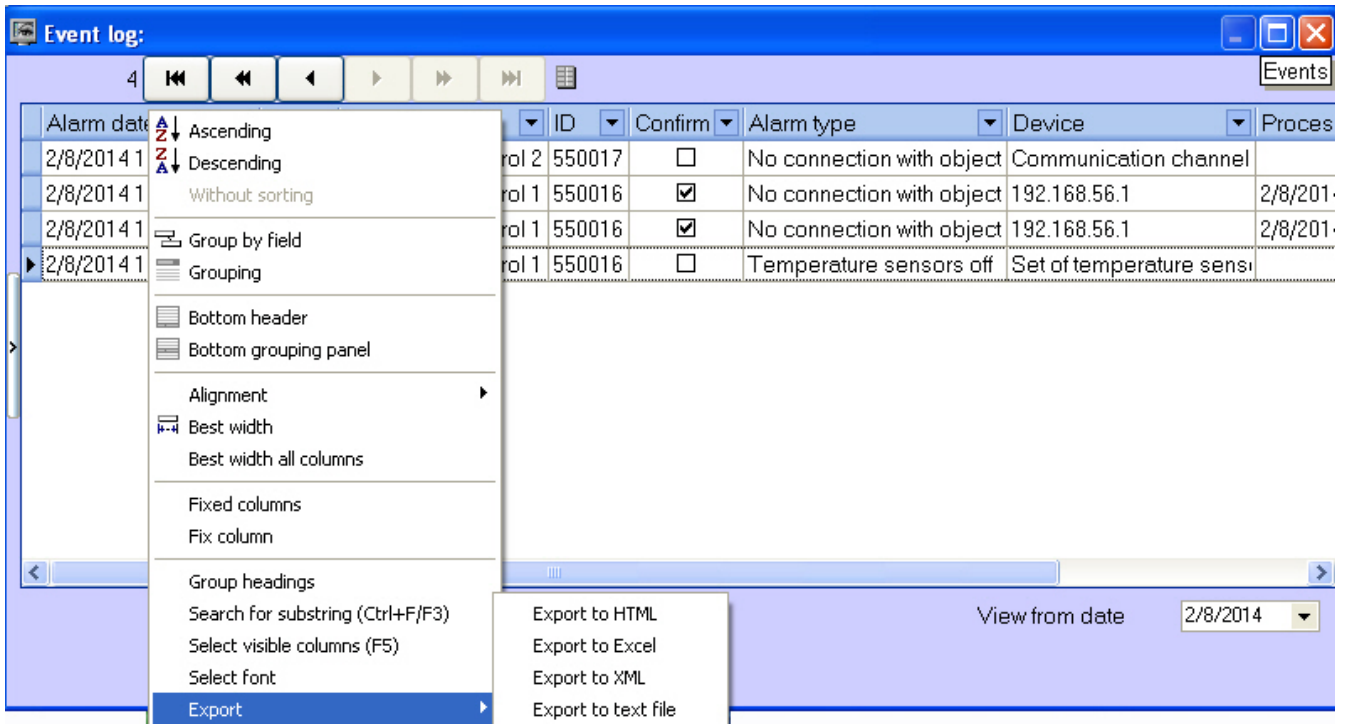
By default, the alarms for the current day are shown. To view earlier events, use the **View from date** drop-down list.



If the number of events exceeds 1000, use the navigation buttons for viewing.

Exporting the event log

To export the event log, open the context menu for a column of the table in the **Event log** window.



Configuring the position of the event log's columns

The columns' context menu contains the **Best width all columns** command. Select this command to set such a width for each column that fits all the column's content.

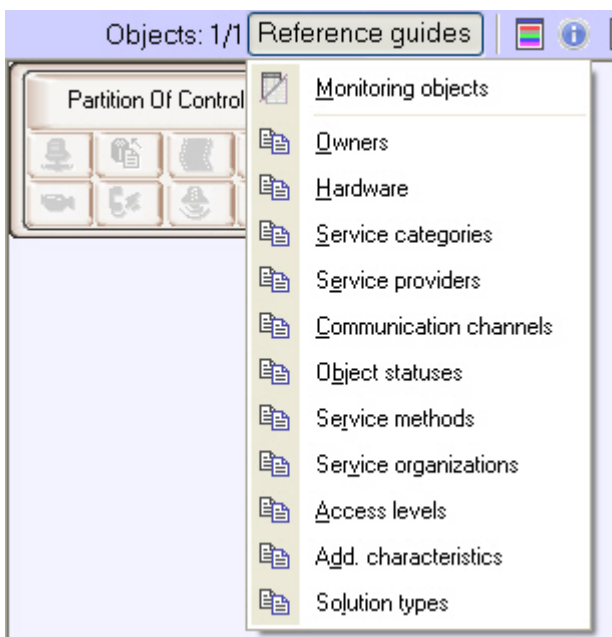
If not all the columns are visible in the **Event log** window, a scrolling GUI element appears. When you scroll, the columns that must be visible all the time (for example, **Alarm date**, **Processing date**) are moved. To lock the position of such columns, use the **Fix column** command from the same context menu.

You change the position of the columns. To do that, click on the heading of the column that you want to move and drag it to another place.

Regulatory and reference information

Viewing regulatory and reference information

Monitoring keeps regulatory and reference information for all objects. To view this information, click **Reference guides** and select the **Monitoring objects** menu item.



The **Monitoring objects** window opens. It contains all the objects created in the system.

The screenshot shows a window titled "Monitoring objects" with a toolbar and a table. The table has columns for Object, ID, Name, Location, Object, Entered, and Removed. A single record is displayed with the following values:

Object	ID	Name	Location	Object	Entered	Removed
550016	1	Partition Of Control 1	Partition Of Control 1		2/7/2014 8:24:48 PM	

Editing regulatory and reference information

If you double click on a record, a form opens. Here you can fill in regulatory and reference information for the object.

The screenshot shows a window titled "Record" with a form containing the following fields and values:

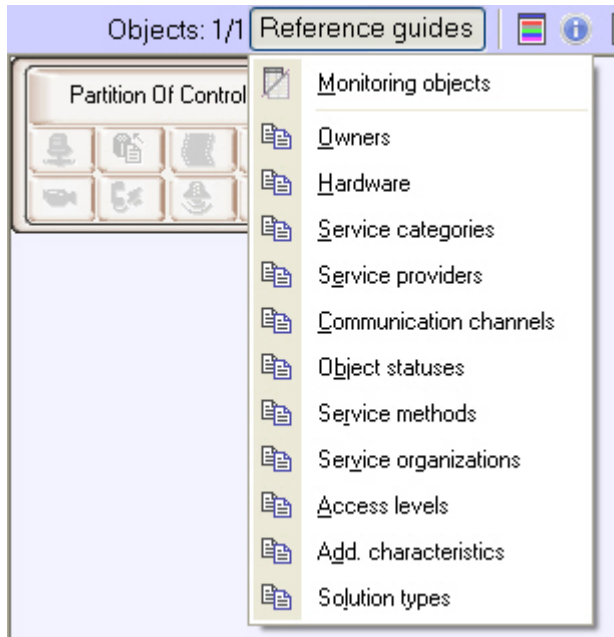
Object code	550016
Name	Partition Of Control 1
ID	1
Location	Partition Of Control 1
Object	
Entered	2/7/2014 8:24:48 PM
Removed	
Access	
Add. characteristic	
Solution type	
Type of connection with object	
Service provider	
Owner	
Hardware	
Status	
Service category	
Service method	
Service company	

Some fields offer default values and some do not. This means that the corresponding reference book is empty and it must be filled out (see the [Filling out reference books](#) section).

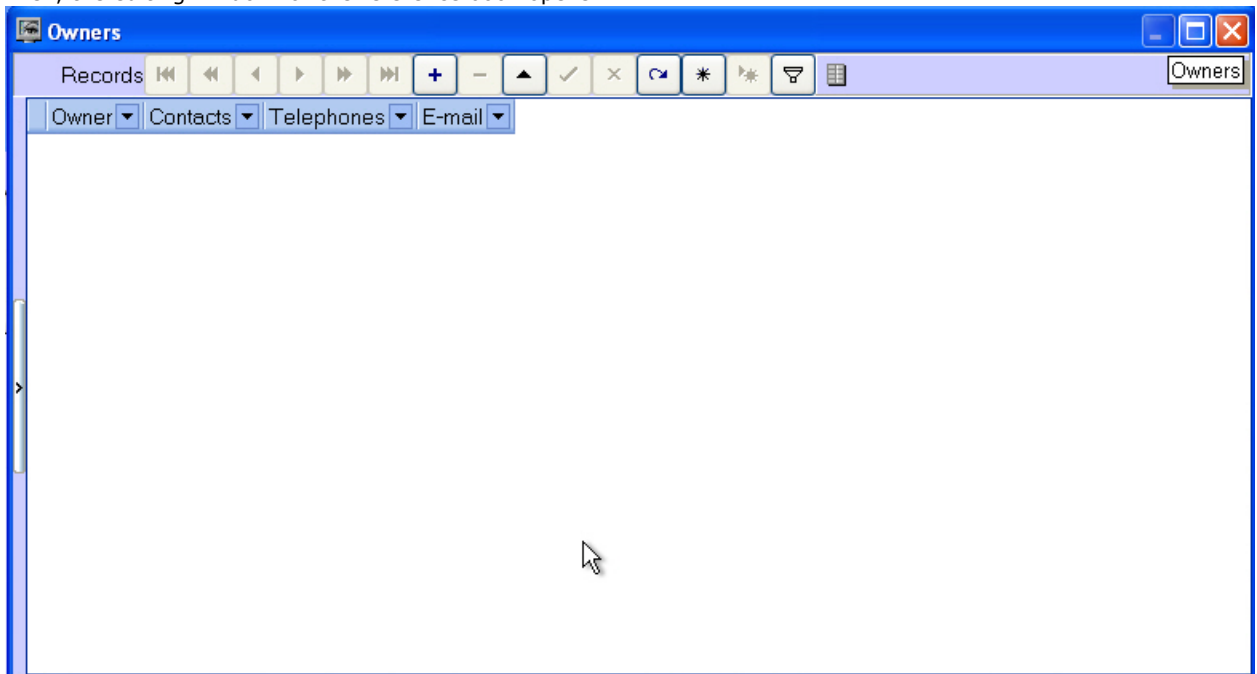
Filling out reference books

To fill out a reference book:

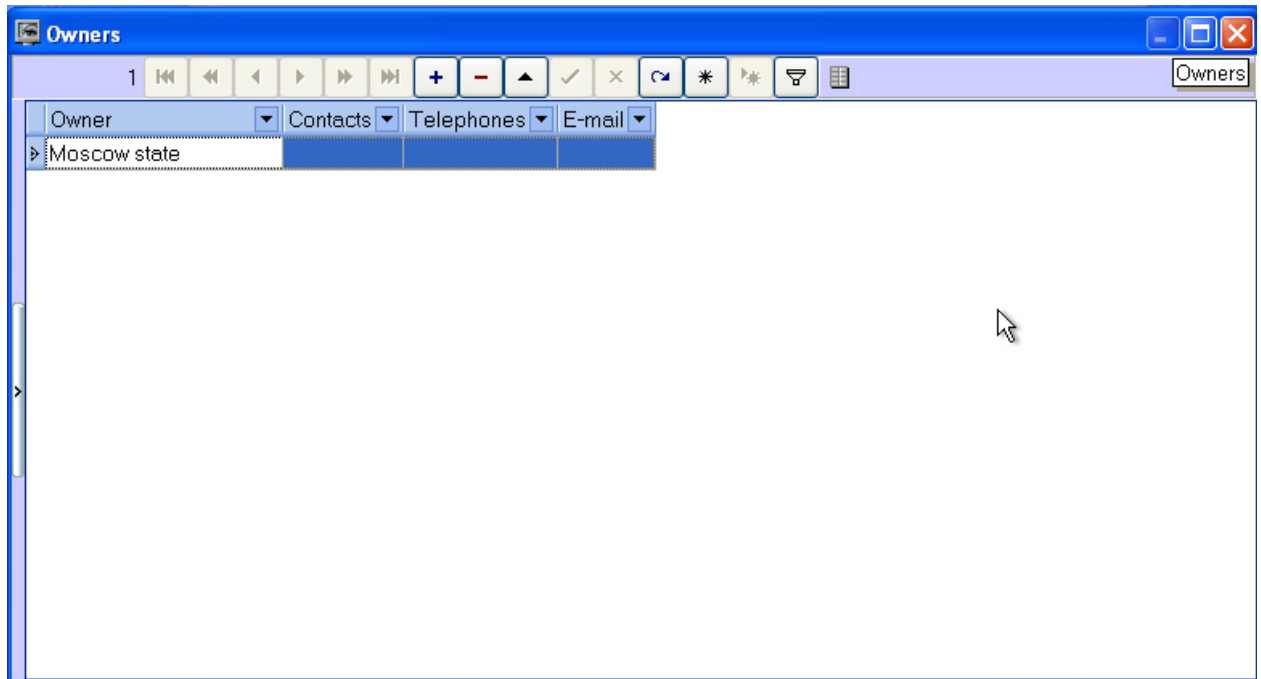
1. Click **Reference guides**. A window opens. In the window, select the required reference book (for example, **Owners**).



2. Then, the editing window for the reference book opens.



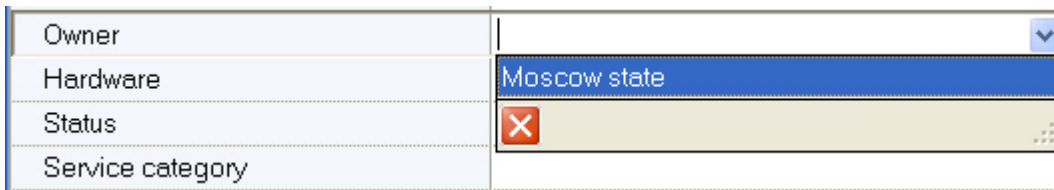
3. To add an entry, click **Insert entry** and enter the value.



4. Click **Save**.

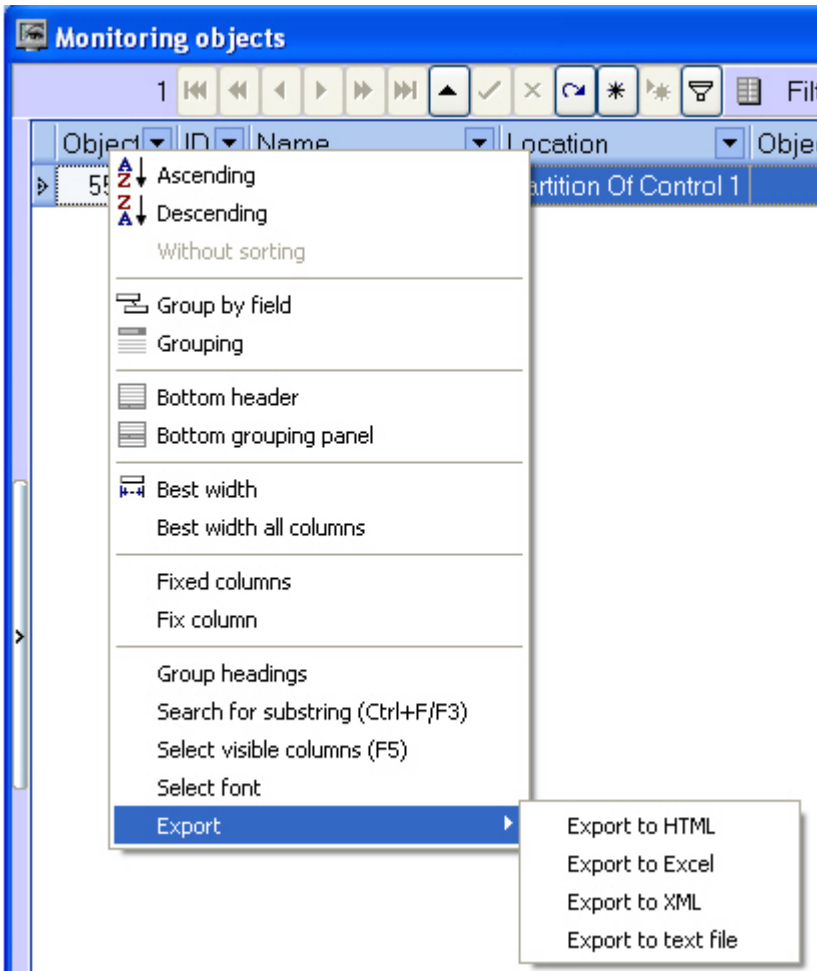
You can edit any reference book like this.

After you add a value to a reference book, you can use it for filling in the corresponding field for regulatory and reference information.



Column context menu in the Monitored objects window

Right-click on the heading of any column in the **Monitoring objects** window. A context menu opens. You can use this menu for different actions, in a way similar to the actions with the event log (see [Exporting the event log](#) and [Configuring the position of the event log's columns](#)).



Viewing objects' live video and archives

One can playback both live video and archives from objects on the Control Panel:

1. Playing back video from a specific camera.
2. Playing back video from all cameras added to the Partition of Control.
3. Creating user layouts and playing back video from selected cameras added to the Partition of Control.

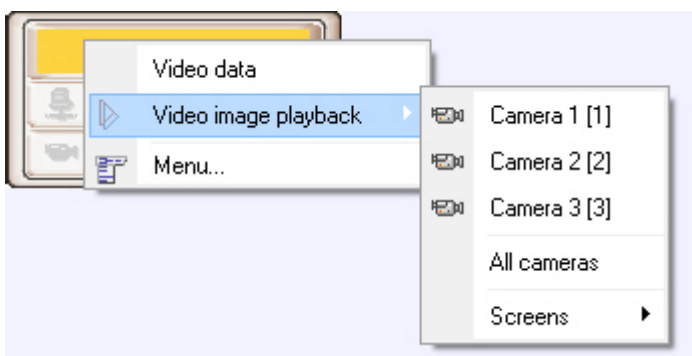


Note.

Information on how to select cameras for live video and archives playback on the Control Panel can be found in [Configuring the camera list](#) section of [Administrator's Guide](#).

To select the mode for playing back live video and archive right click the area with object name. Select the **Video image playback** item in the context menu. To play back video

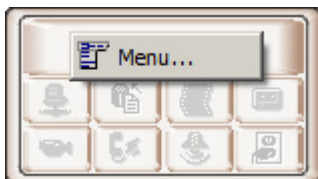
To play back video from a specific camera select the name of corresponding camera in the menu; to play back video from all cameras select the **All cameras** item and to select the user layout select the **Displays** menu item. Find more details on how to play back video image in the corresponding sections.



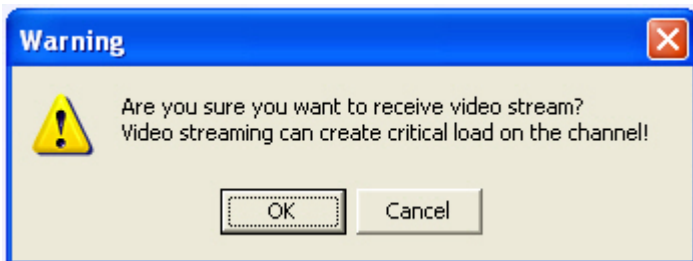
Note.

Camera names in the context menu as well as IDs specified in the square brackets correspond to those on the **Agent Of Control**.

The list of cameras corresponds to the list of cameras specified when configuring the **Agent Of Control** object. The **View video** menu item is available only after the object connects to **Monitoring** for the first time. Before that, there is no such menu item.



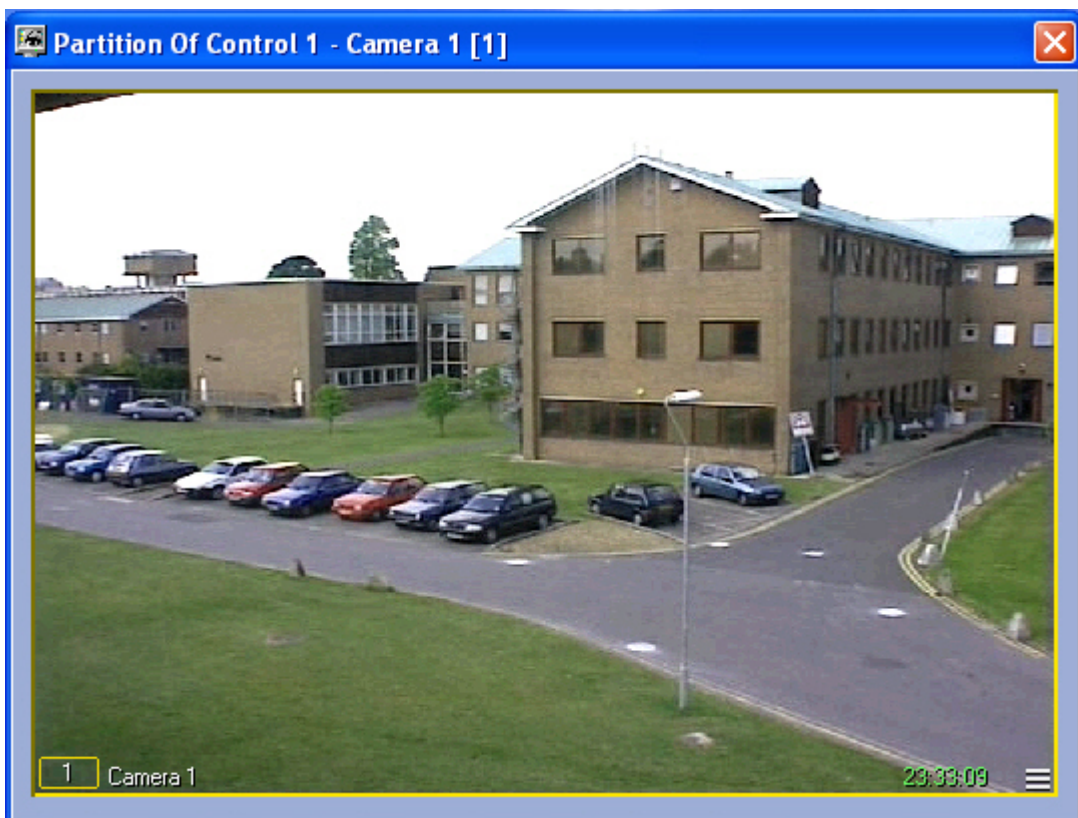
If the *Monitoring* software have the corresponding setting, then when the camera is selected for viewing live video the warning will be displayed saying that transmission of video can create critical load on the channel. If it is really necessary to view live video, click **OK** in the **Warning** dialog box. To cancel viewing live video, click **Cancel**.



Playing back live video and archive from a specific camera

To play back live video and archive from a specific camera select the name of corresponding camera in the **Video image playback** menu of the Control Panel (see *Viewing objects' live video and archives*).

After you select a camera, a dialog box opens. Wait for several seconds for the video to start.

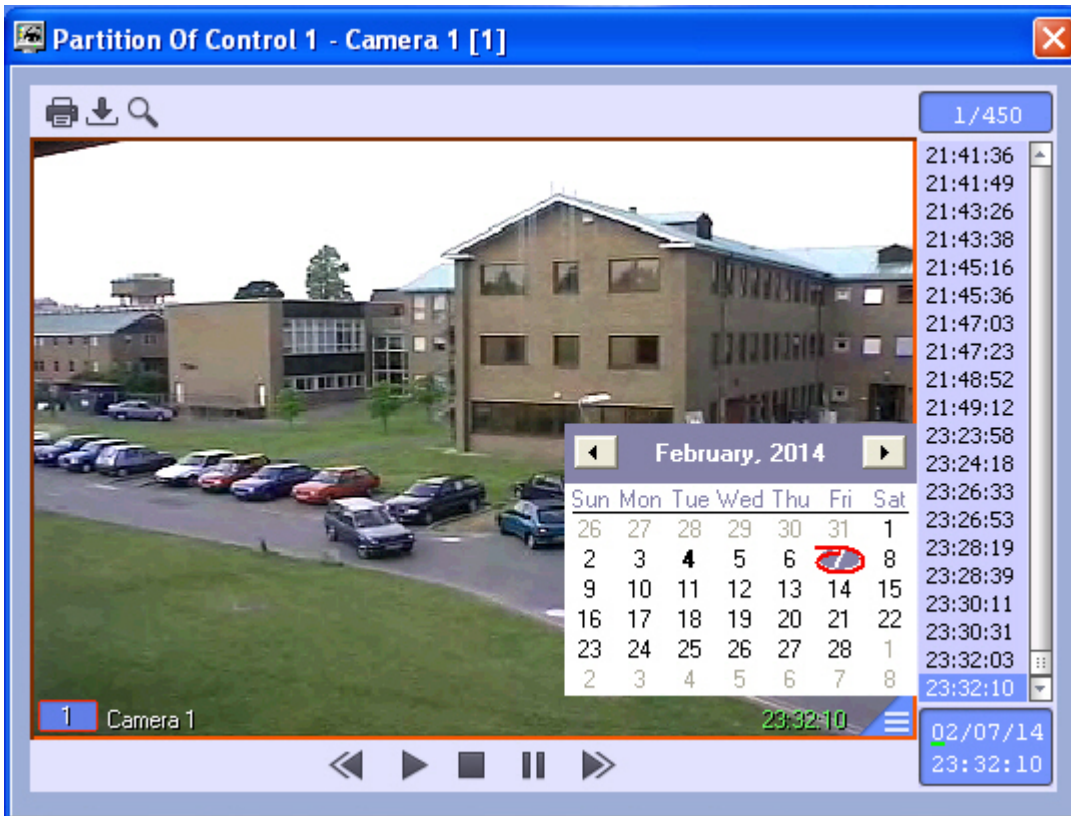


The window's title shows the description of the object, the camera sequence number, and the camera ID in brackets. The archive is accessed using Intellect's standard method.



Note.

For more details, see the document *Intellect software package. Operator's guide*.



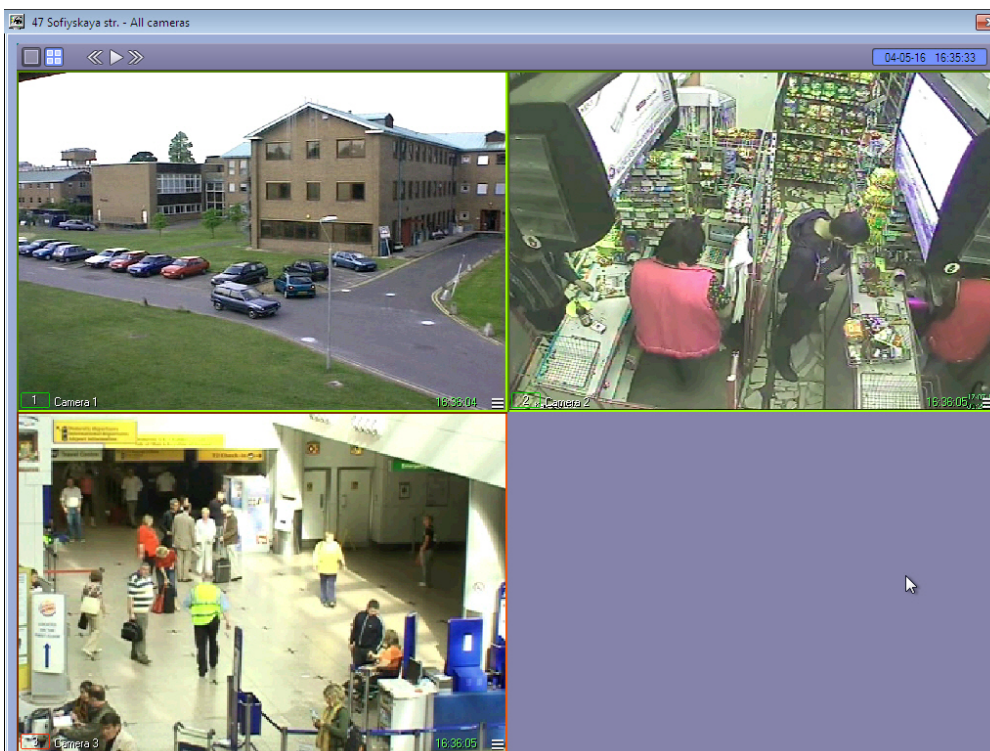
While viewing live video or archive from several cameras simultaneously, a separate dialog box opens for each camera.



To view live video in the full screen mode, double left click it. To exit the full screen mode and restore video mode, left click the video once again.

Playing back live video and archive from all cameras

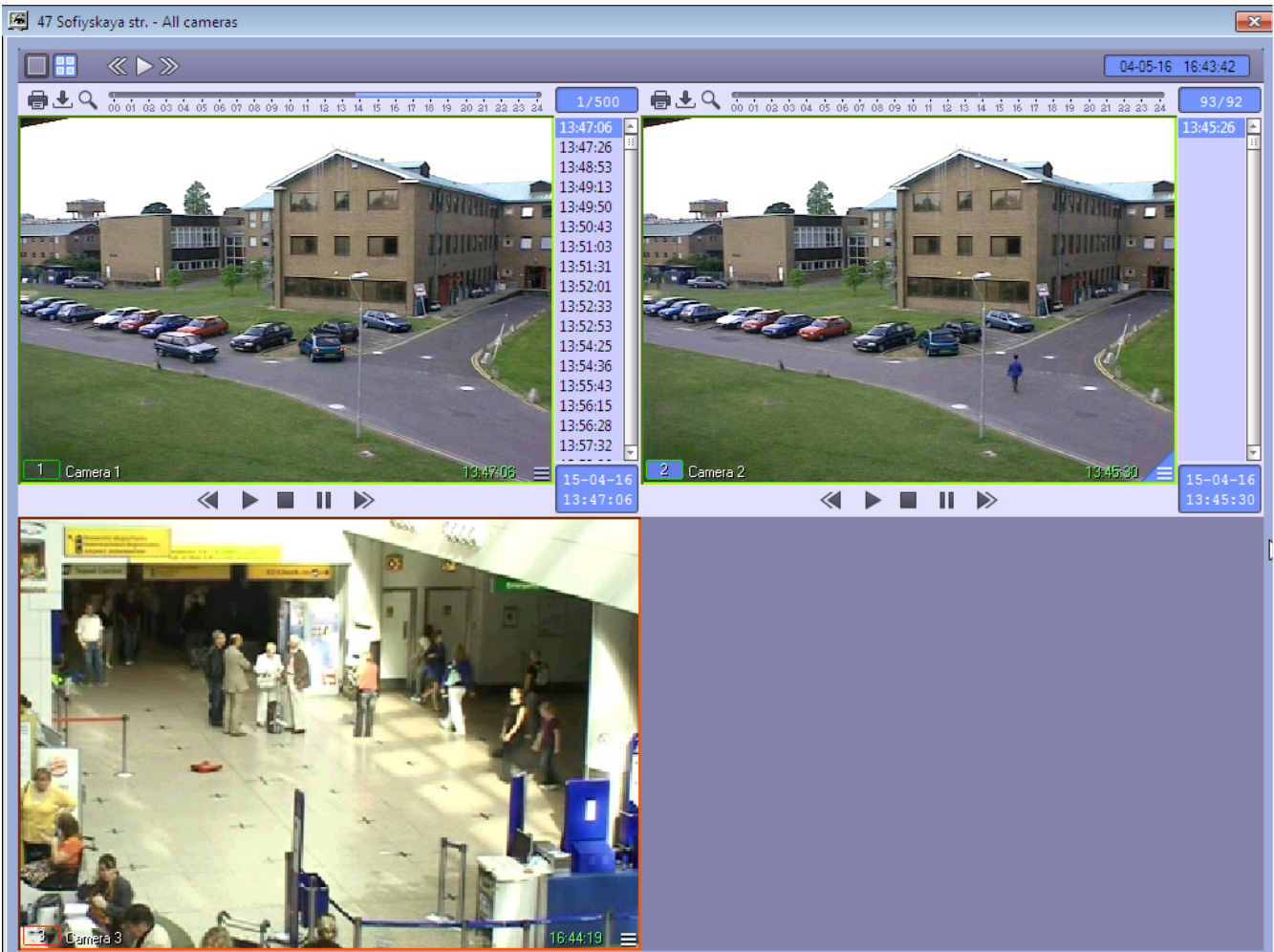
To play back live video and archive from all cameras select the **All cameras** item in the **Video image playback** menu of the Control Panel (see Viewing objects' live video and archives).

As a result the dialog box with viewing tiles for all cameras added to the Partition of Control appears.



Use the  button in the bottom right corner of the viewing tile to enter the archive mode and the  button to exit

the archive mode.



Archive playback control functions are the same that those used in the Video monitor in *Intellect*. One can switch between viewing tiles as well as start manual and auto paging. Find details on these functions in *Intellect software package. Operator's Guide*. The latest version of this document is available in *AxxonSoft documentation repository*.

Playing back live video and archive from selected cameras

Creating, editing and deleting layouts

On the page:

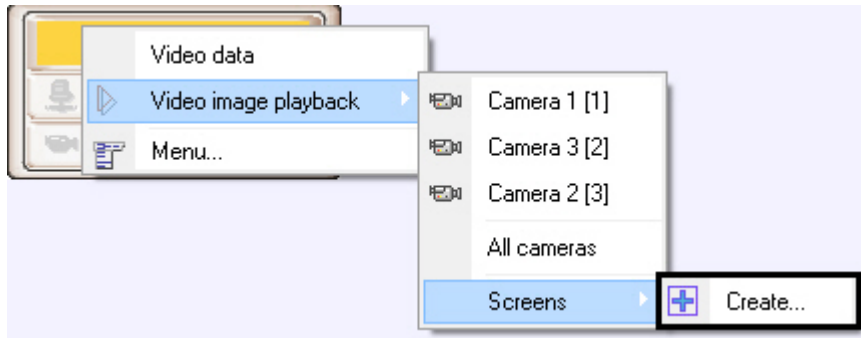
- Creating layout
- Adding camera to layout
- Deleting layout

Layout represents the list of cameras the user can select on the Control Panel in order to play back live video and archive (see *Viewing objects' live video and archives*).

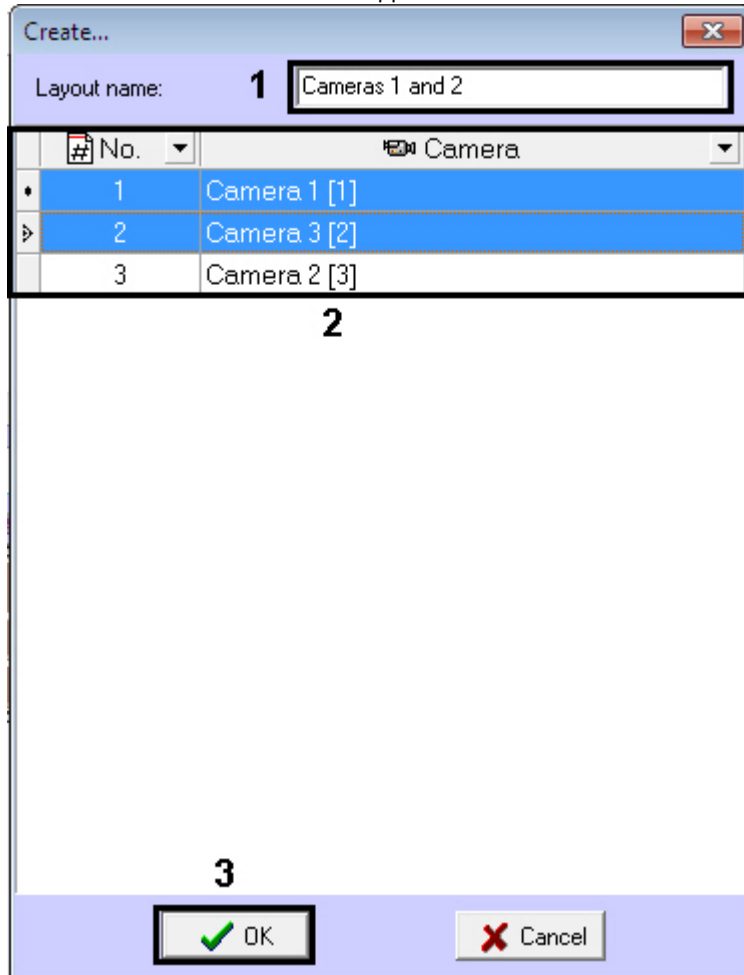
Creating layout

Create a layout as follows:

1. Right click the object on the control panel and select **Video image playback -> Displays -> Create** in the context menu.



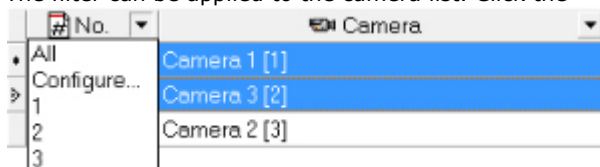
2. As a result the **Create...** window appears.



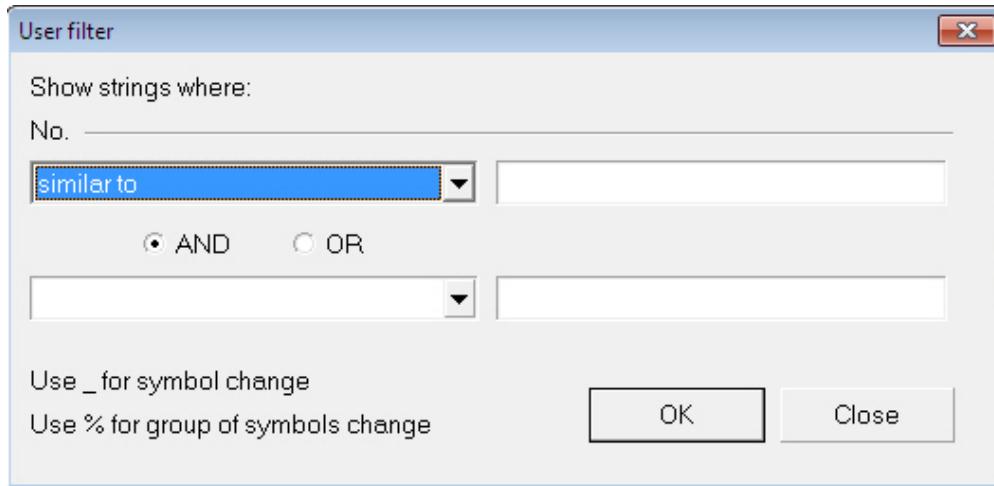
3. Specify the **Layout name** (1).

4. Select one or several cameras to be added to the layout. To select several cameras left click the corresponding lines in the table and hold down the Ctrl key on the keyboard (2).

The filter can be applied to the camera list. Click the  button in the column title and select the filter values:

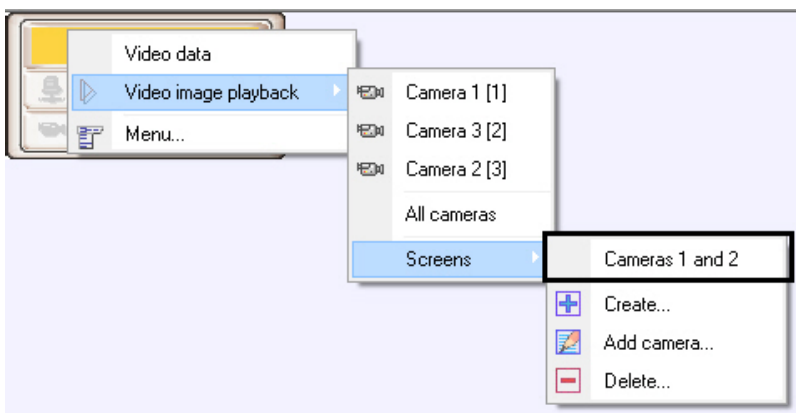


The **User filter** box appears when selecting the **Configure** item – one can set conditions to show cameras in the list.



5. Click the **OK** button (3).

As a result the created layout is available in the **Video image playback -> Displays** menu.

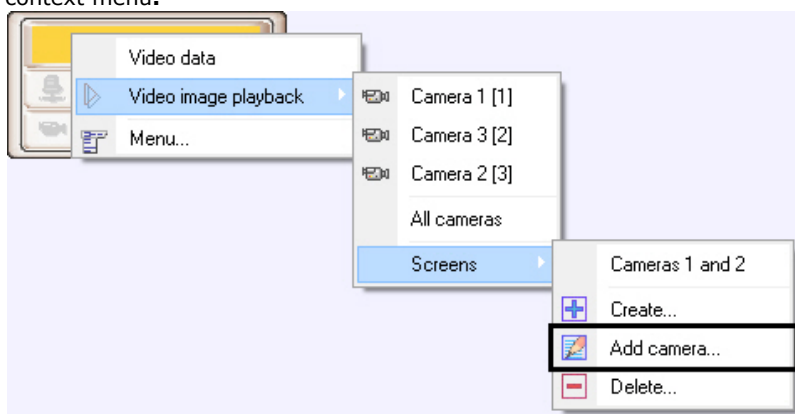


The layout is now created.

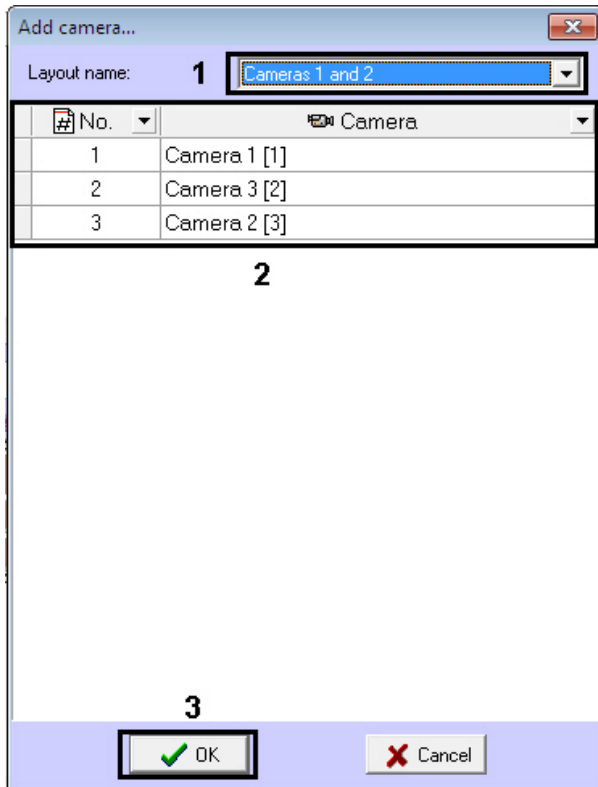
Adding camera to layout

Add a camera to the layout as follows:

1. Right click the object on the control panel and select **Video image playback -> Displays -> Add camera** in the context menu.



2. The **Add** window appears.



3. In the **Layout name** dropdown list select the layout the cameras are to be added to (1).
4. Select one or several cameras to be added to the layout. To select several cameras left click the corresponding lines in the table and hold down the Ctrl key on the keyboard (2).

Note. The camera list filter can be applied the same way as when creating the layout – see *Creating layout* above

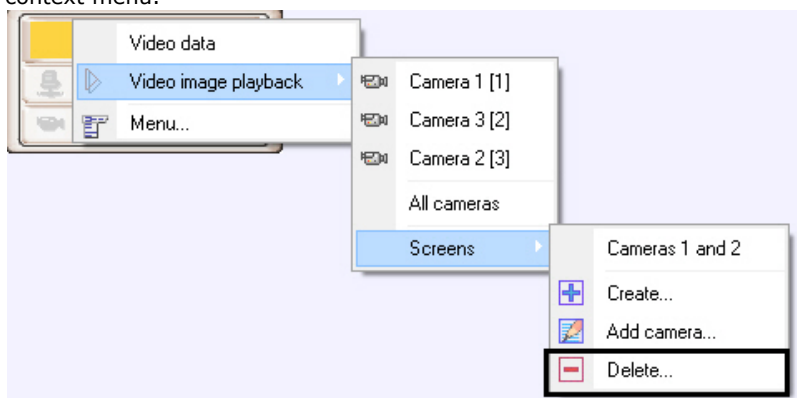
5. Click the **OK** button.

Cameras are now added to the layout.

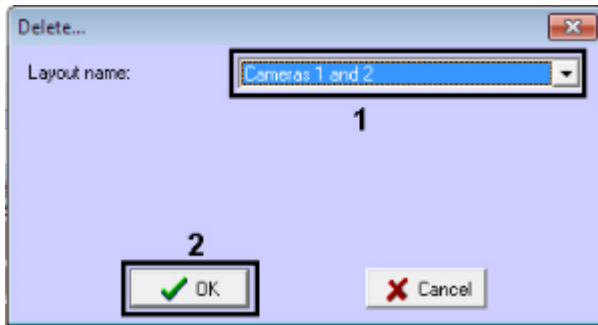
Deleting layout

Delete the layout as follows:

1. Right click the object on the control panel and select **Video image playback -> Displays -> Delete** in the context menu.



2. The **Delete...** window appears.



3. In the **Layout name** dropdown list select the layout that is to be deleted (1).
4. Click the **OK** button (2).

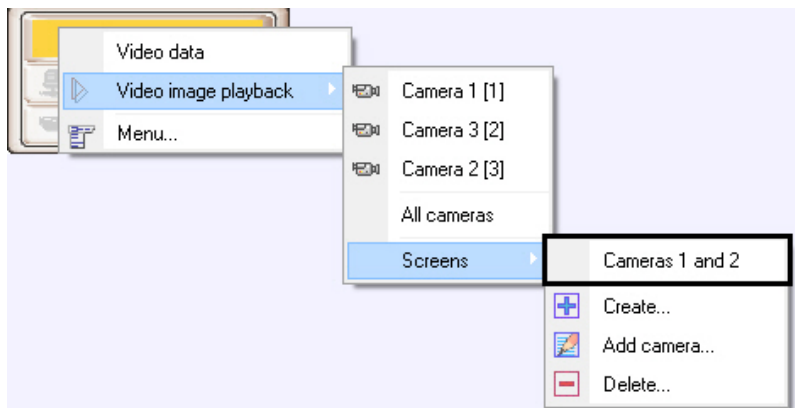
The layout is deleted.

Selecting layout for display

Select the layout that is to be displayed as follows



1. Right click the object on the control panel, select **Video image playback -> Displays** in the context menu and select the name of the required layout in the menu.

Note.
If there is no layout in the list, then create one– see [Creating, editing and deleting layouts](#).



2. As a result the window to play back live video and archive from cameras added to the layout appears.

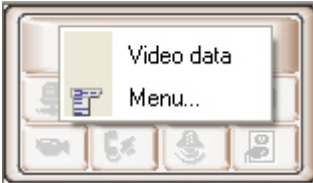


Use the  button in the bottom right corner of the viewing tile to enter the archive mode and the  button to exit the archive mode.

Archive playback control functions are the same that those used in the Video monitor in *Intellect*. One can switch between viewing tiles as well as start manual and auto paging. Find details on these functions in *Intellect software package Operator's Guide*. The latest version of this document is available in [AxxonSoft documentation repository](#).

Starting external applications from the Control Panel

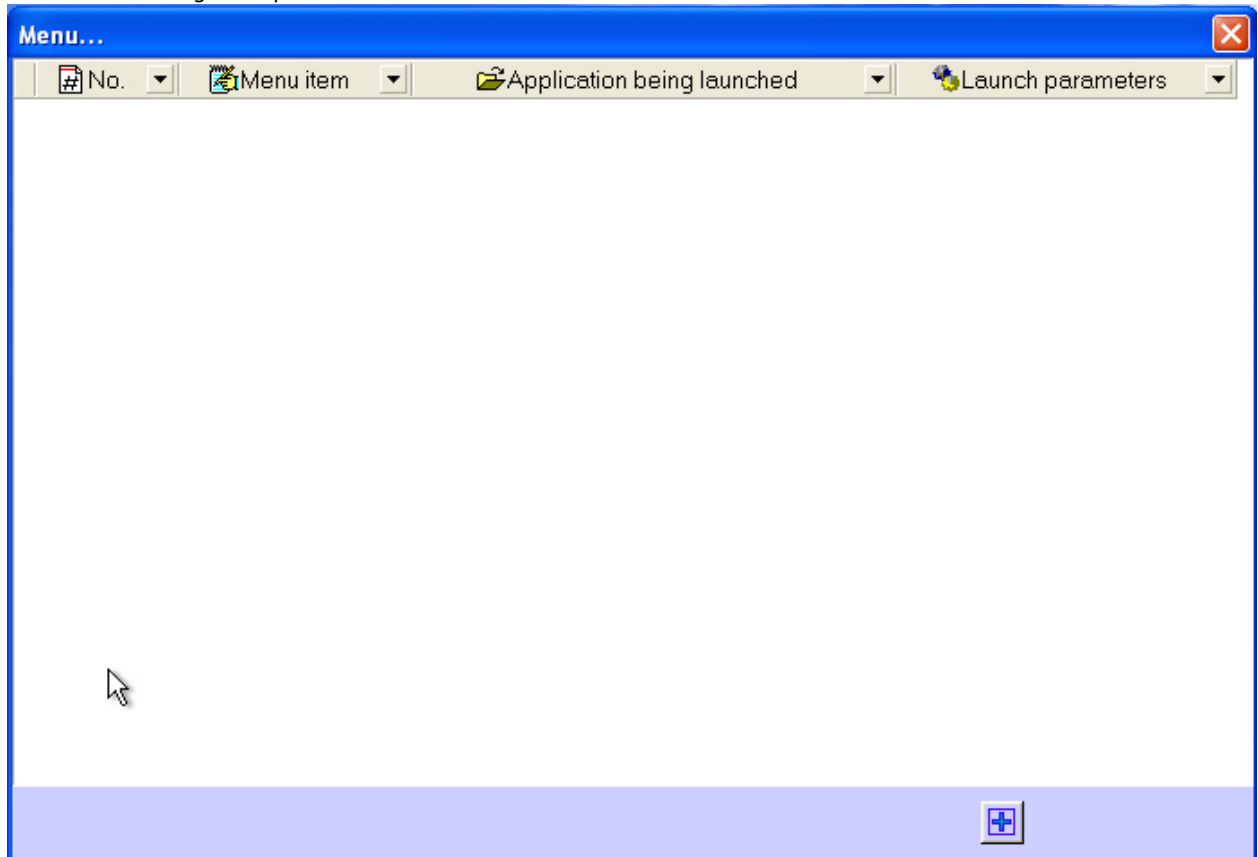
You can use the **Menu...** item of the context menu to launch external applications from the Control Panel.



You use the IP address of any object.

For example, if you want to ping any object, follow these steps:

1. Right-click the area that contains the object's name. The context menu opens. Select the **Menu...** menu item. Then the **Menu...** dialog box opens.



2. In this dialog box, click **Add entry** and enter values as shown in the following figure.

Menu...

No. ▾ Menu item ▾ Application being launched ▾ Launch parameters ▾

Menu item name:

Application being launched:

Launch parameters:

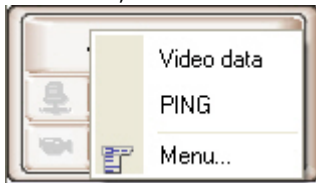
The <ip> string is a reserved expression. When application is called, the real IP address is inserted. Type this string in lowercase.

- Click **OK**. The **Menu...** window shows a new entry that describes the new context menu item.

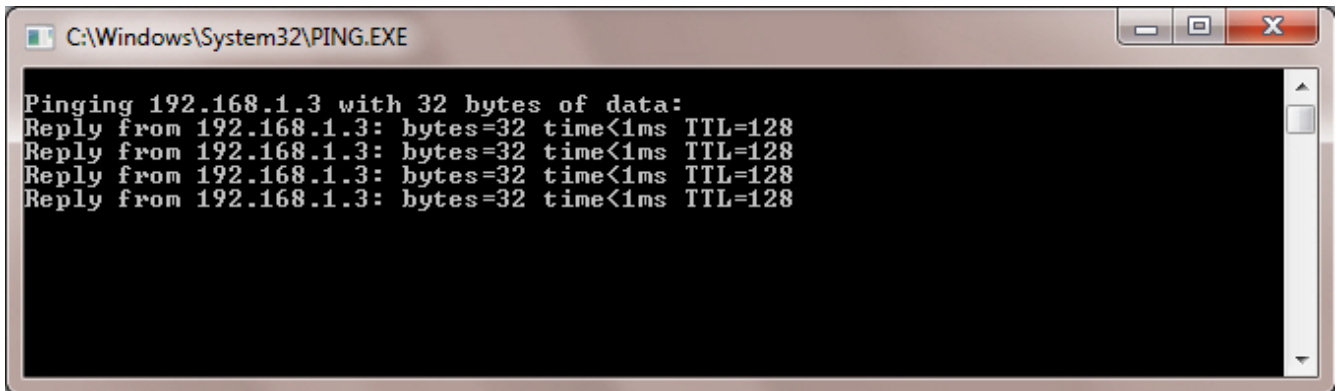
Menu...

# No. ▾	Menu item ▾	Application being launched ▾	Launch parameters ▾
1	PING	C:\WINDOWS\system32\ping.exe	<ip> -t

If you right-click on the area that contains an object's name, a context menu opens. The menu contains the new menu item, **PING**.



If you select this menu item, the *ping* program starts.



For objects that connect to *Monitoring* via RS232 or objects that never connected to it yet, the 127.0.0.1 value will be used instead of <ip>.

The same way you can create menu items that start other external applications (such as Radmin, etc.).

Executing ad hoc command on the Agent of Control by the operator of Server of Control

Ad hoc commands can be executed on the *Agent of Control* using the **Menu...** context menu item on the Control Panel.

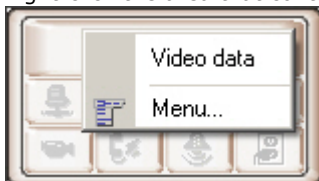


Important!

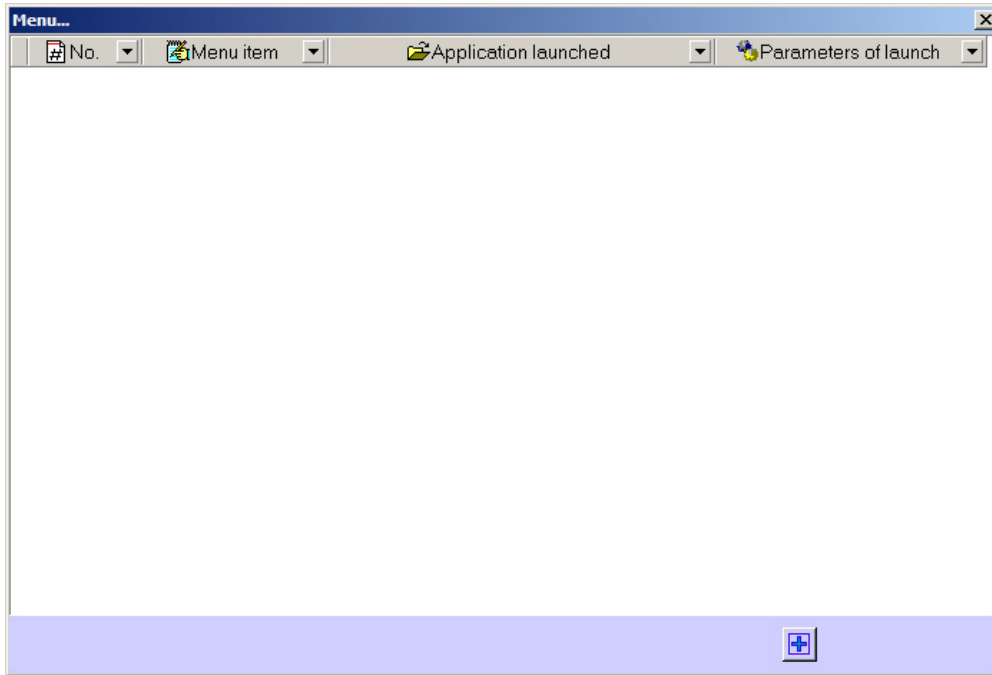
Scripts to process incoming commands are to be created on the *Agent of Control*. See [Sample script for processing Server of Control command on Agent of Control](#) section of [Administrator's Guide](#).


Configure command sending on the *Server of Control* as follows:

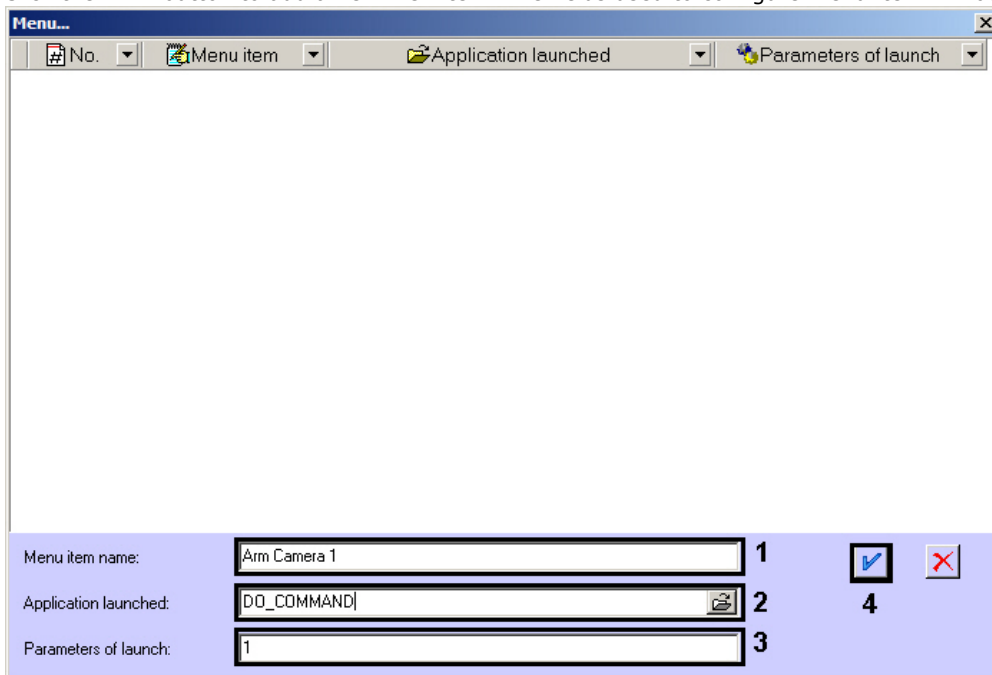
1. Right-click the area that contains the object's name and select the **Menu...** item in the appeared context menu.




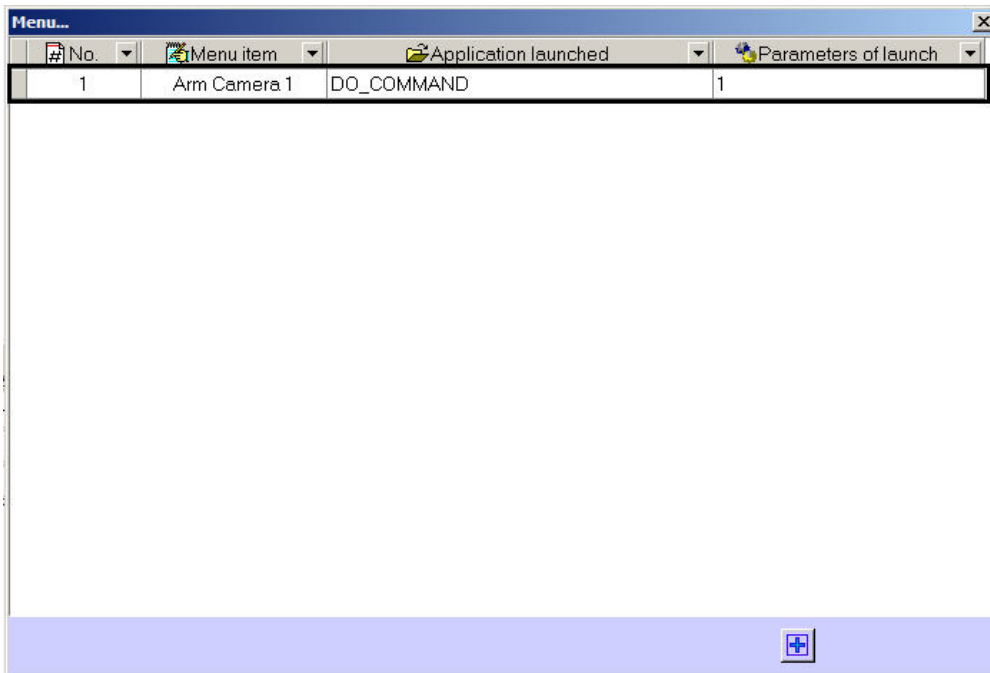
2. The **Menu...** dialog box opens.



3. Click the  button to add a new menu item. The fields used to configure menu item will be displayed.

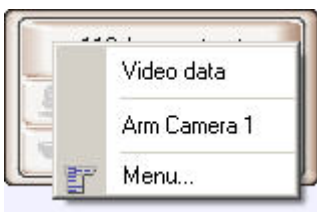


4. In the **Menu item name** field enter the menu item name that will be displayed in the context menu on the Control Panel (1).
5. Enter DO_COMMAND in the **Application being launched** field (2).
6. Enter the value for param0<> parameter in the **Launch parameters** field (3). Using the value of this parameter in the script created on the *Agent of Control* one can find out what command is to be executed.
7. Click the  button (4). The command will be added to the list of commands in the **Menu...** dialog box.



8. Repeat steps 3-7 for all required commands and parameters.
9. Close the **Menu...** dialog box.

The added commands will be displayed in the context menu on the Control Panel.



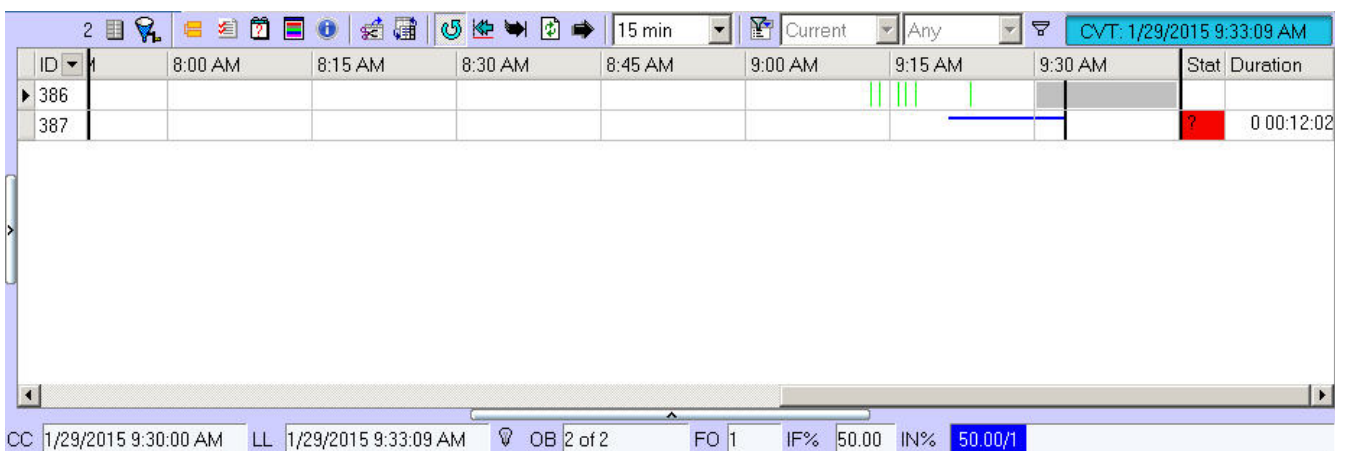
Command sending is now configured on the *Server of Control*.

Log Panel


Log Panel's interface

The Log Panel has three main parts:

1. Control buttons panel.
2. Working area.
3. Status bar.



Color definitions for events

In the Log Panel, alarms are shown as color stripes in a table. Each alarm type has its own color. You can learn the meaning of the colors by clicking the button  (**Legend information**). When you click this button, the information

window opens .



Vertical stripes mean short-term errors and horizontal stripes mean long-term errors (hardware failure).

Note. Alarm types are described in the [Alarm types](#) section.


The length of a stripe shows the alarm's duration in accordance with the selected scale. The scale is a time period for one column.




Moving through the list of alarms


Each column's heading always contains the start time for the column's time period. Use the Left and Right keys and the horizontal scrollbar to move to any date within the loaded data.


To quickly move to the required date and time, use the button (**Go to date**). Use the button (**Go to end**) if you

want to move to the end time of the last download. Use the button  (**Go to the current error begin**) if you want to move to the start of the current error.

The data is loaded to the system at certain times only, so there is a need to refresh the data shown on the screen automatically. For that, you can use the button  (**Auto refresh**). If this button is in the pressed state, new alarm data is searched in the database. If such data is found, the view is refreshed and you can see the end of the shown data. The date and time of the current view are shown to the right of the filters (Current View Time - CVT).

If the **Auto refresh** button is in the unpressed state, the current view can get outdated. In this case, the date of the last download exceeds the CVT. To show this, a "bulb" flashes in the status bar.

LL 2/7/2014 11:41:22 PM 

The "bulb" shows that the current view is outdated and that you can refresh it with the button  (**Refresh**). The list is also refreshed when you move to the end, select and apply a filter, and in many other cases.

Ignoring objects


Ignored objects are never shown on the screen. For how to work with ignored objects, see the [Ignoring objects](#) section.

Status bar

On page:	
• General information	
• Functioning and non-functioning rates	

General information

The status bar shows the number of non-ignored objects (**OB**) and the number of objects that have hardware failures(**HF**) shown at the moment.

CC 1/29/2015 9:30:00 AM LL 1/29/2015 9:34:09 AM  OB 2 of 2 FO 1 IF% 50.00 IN% 50.00/1

The status bar also shows the start of the displayed period for the current cell column (**CC**), time when the data was last loaded into the database (**LD**), functioning rate (**FR%**) and non-functioning rate (**NR%**) for the video surveillance system, broken down by reason (see the [Functioning and non-functioning rates](#) section).

Functioning and non-functioning rates

The status bar shows the functioning rate (**FR%**) and non-functioning rate (**NR%**) for the video surveillance system, broken down by reason.

FR(%) is calculated according to the following formula:
 $(1 - Nnf / Na) * 100$, where


- *Nnf* is the number of objects that do not function properly.
- *Na* is the total number of objects

The non-functioning rate for a particular reason is calculated according to this formula:
 $(Nnfbr / Na) * 100$, where

- *Nnfbr* is the number of objects that do not function properly for this particular reason
- *Na* is the total number of objects

These rates are calculated only for non-ignored objects. For ignored objects, these rates are never calculated and the filter is never used. If a non-functioning rate has the value of zero, it is not shown in the status bar.

Number of alarms displayed

The number of objects shown in the Log Panel or Control panel is defined by the current filter if it is enabled with the filtering button  (**Turn filter on/off**).

Current	Any
Current	Any
5 min	Alarms
15 min	5 sec
30 min	15 sec
1 hour	1 min
2 hours	5 min
8 hours	10 min
Day	30 min
3 days	1 hour
	5 hours

The left list shows time periods. If there was an alarm during the selected period, it is included on the list. The right list shows the alarm durations that trigger the filter. For example, if you set the filter to "Current - 1 minute", only those objects are shown that are currently in the alarm state and that have already been in this state for 1 minute or more. If you set the filter to "Day- 5 hours", only those objects are shown that have at least once been in the alarm state in the last 24 hours and that were in this state for at least 5 hours.

To calculate rates only for filtered objects, click (Calculate rates only for filtered table lines).

Object status

The **Status** column shows the objects' status. Its color and contents are explained in the **Definitions** panel (see the [Color definitions for events](#) section). Note that the **Status** column in the Log Panel is shown in red only if there is at least one current long-term alarm.

Alarm duration

The table's last column (**Duration**) shows the duration of the current alarm for an object in *days hh:mm:ss* format.

Information about an object

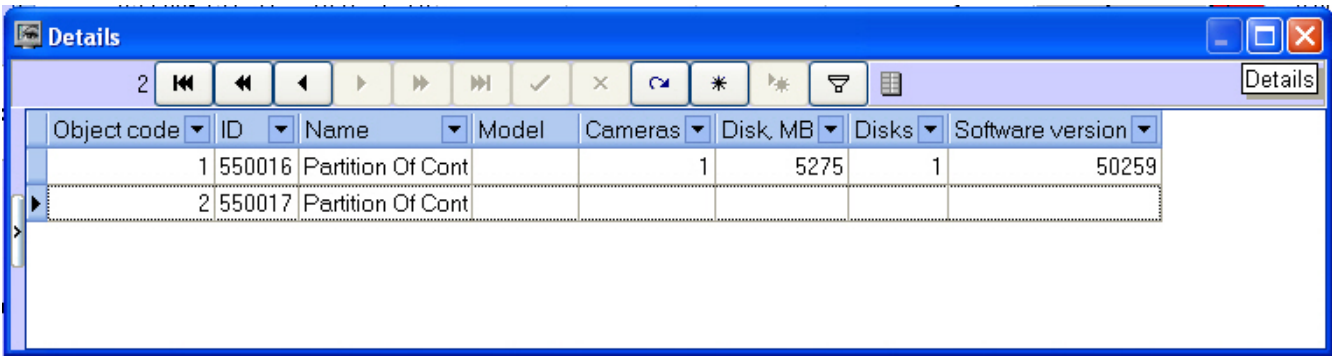
Click (**Show inspector Ctrl+I**). A special area appears. This area contains short information about the currently selected object. The lower part contains the **Fields** tab.


ID	9:00 AM	9:15 AM	9:30 AM	Stat	Duration
386					
387			—	?	0 00:17:02

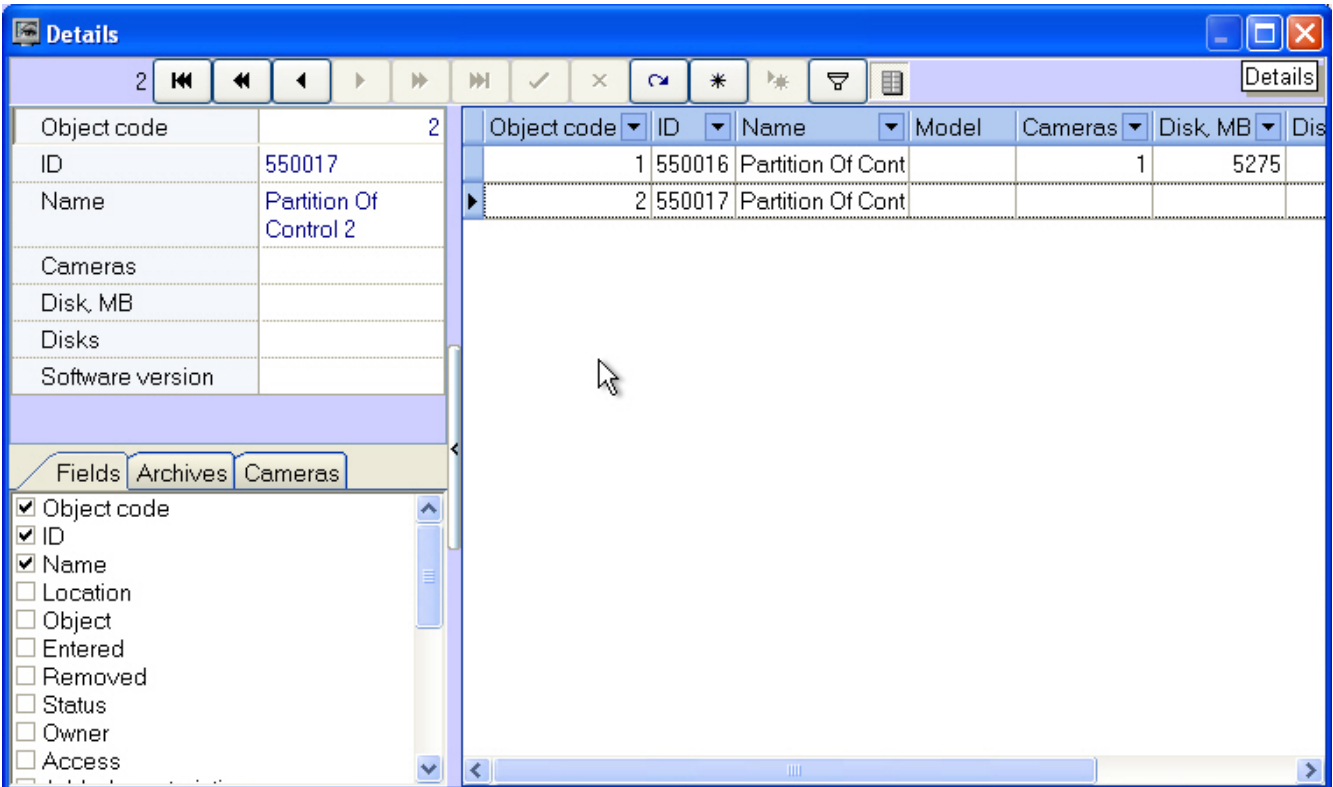
The information is shown (according to the options selected) as columns in the main list of the Log Panel.

Objec	ID	Name	Camera	Disk, ME	Disks	Software
2	550017	Partition Of Control 2				

To get more detailed information about an object, select it in the Log Panel and click (**Show detailed information**). The **Details** window opens.



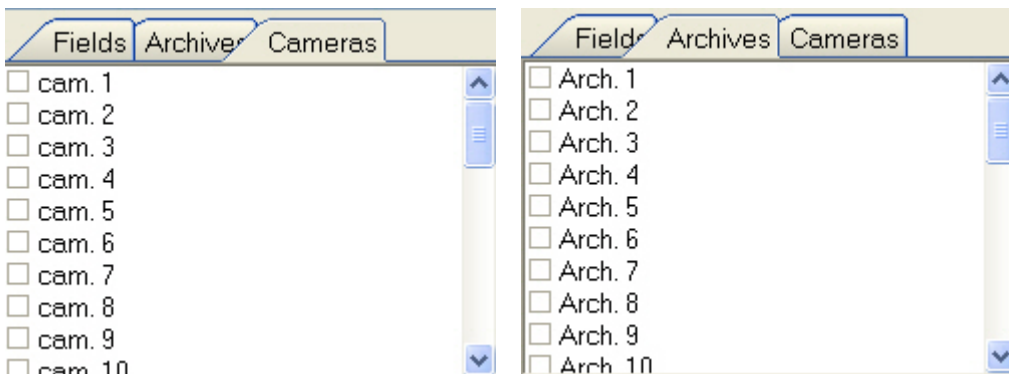
In the **Details** window, click  (**Show inspector Ctrl+I**). A special area appears. The upper part of this area contains information about the currently selected object.



Note.

If the Owner Panel is in use, then information about only the objects that belong to the owner selected on the Owner Panel is displayed in the **Details** window. To view the details about all system objects, call this window on the Owner Panel – see [Viewing details on alarms for all system objects](#).

The lower part of the area contains three tabs: **Fields**, **Archives**, and **Cameras**. The information is shown (according to the options selected) as columns in the main list of the **Detailed information** window.



The data in the **Cameras**, **Disk (MB)**, **Disks**, and **Version** fields and in all the fields in the **Archives** and **Cameras** tabs are filled in automatically when packets with technical information are received from the objects. If these fields are empty for an object, it means that the object never connected yet.

The **Cameras** field shows the number of cameras for the object.

The **Disk (MB)** field shows the maximum free space for all the logical disks where recording is performed.

The **Disks** field shows the number of logical disks where recording is performed.

The **Version** field shows the version of *Conrol Agent* installed at the object.

The fields in the **Archives** tab show the depth of the video archive in days for each camera. The fields in the **Cameras** tab show the current status of each camera (**on/off**).



Note.

The video archive depth is determined by Agent Of Control as follows:

The system calculates the actual number of days when a given camera recorded data to the archive.

Example: The video surveillance system has been working for three days. A camera recorded data on the first and the third days. The camera was turned off on the second day. Thus, for this camera, the archive depth equals two days.

Click the button (**Show hardware data**). A special area appears. There you can see changes for these values (**Cameras**, **Disk (MB)**, **Disks**, **Version** and others).

Date	Device	Value
6/6/2013 4:45:48 PM	Disks space	31373
6/6/2013 6:23:21 PM	Disks space	31362
6/6/2013 8:27:39 PM	Disks space	31346
6/7/2013 12:09:39 PM	Archive 1	3
6/7/2013 12:09:39 PM	Disks space	31287

Date	6/6/2013	6/7/2013
Archive 1	2	3
Software version	49058	
Disks counter	1	
Cameras counter	1	
Disks space	31404	31287

Exceeding the allowed number of failures

If the number of failures for a displayed object exceeds 500, then alarms for the object have no details and its background gets pink.

Cameras	Disk, MB	Disks	Software version	Arch. 1	15:45	16:00	16:15	16:30	16:45	17:00	St.	Duration
1	1	31373	1	49058	2							
2											?	0 04:00:21

The number of failures is calculated not for each interval, but for a range of intervals. Consider the case depicted in the figure. Here, the calculation is performed for ten columns from 3:30 p.m. to 6:00 p.m. and for one column from 6:00 p.m. to 6:15 p.m. Even if the maximum number of failures is exceeded in three columns, the background of all ten columns gets pink.

Forcing the confirmation of alarms

Sometimes an alarm must not be considered as an alarm. For example, if the **Set of thermal sensors** parameter was turned on by mistake. In this case, *Monitoring* shows a *Thermal sensors off* alarm that shows that the device is down. Even after the **Set of thermal sensors** parameter is turned off for the object, the alarm is still opened in *Monitoring*.

To fix this inconsistency, click the button (**Force error closing**). To see the list of errors closed in such a way, click the button (**Show closed errors**). An additional table in the right part of the screen.

From	1/8/2014	
Name	Beginning	Close with de
Partition Of Contr	07.02.2014 23:40:5	07.02.2014 23:56

You can double click on an entry in the alarm display area to see the dialog box with an explanation for the errors for the time period of this cell.

Objec	ID	Name	Camera	Disk, ME	Disks	Software	2/8/2014	Stat	Duration
1	550016	Partition Of Control 1	1	5275	1	50259		-	0 00:00:01
2	550017	Partition Of Control 2						?	0 00:00:01

Beginning	End	Duration	Reason, device	Fro...
08.02.2014 00:01:15		0 00:00:01	No connection with object (Co	

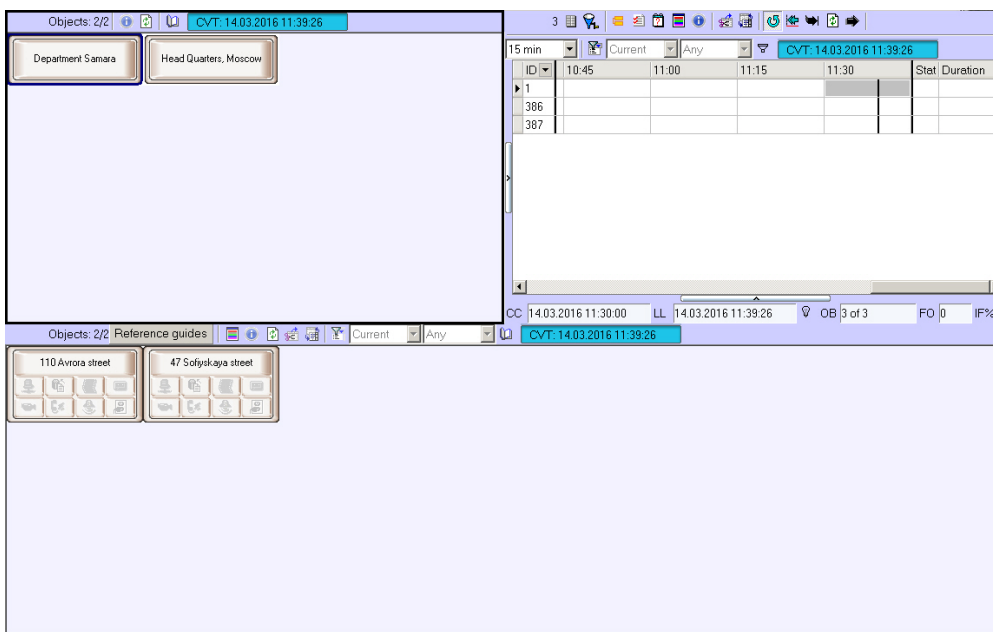
You can double click the area with regulatory and reference information to open the dialog form with a short description of device data.

Record	
Number	
Object code	1
ID	550016
Name	Partition Of Control 1
Cameras	1
Disk, MB	5275
Disks	1
Software version	50259

Owner Panel

Owner Panel interface

The Owner Panel always operates along with the Control Panel. The Owner Panel interface is shown on the figure.




Owners are represented on the panel as rectangles. The color of the rectangle indicates whether there are alarms on the objects that belong to the owner:

1. White (there are no errors on the objects that belong to the owner);
2. Red (on the objects that belong to the owner there are errors and alarms that are not confirmed by the operator);
3. Pink (on the objects that belong to the owner there are errors that are confirmed by the operator).

Left-click the owner, the rectangular is framed blue and only those objects that belong to the owner are shown on the Control Panel.

Information on the Owner Panel is updated after every data loading from the database. Current time of data display on the Owner Panel is shown in the CVT field.

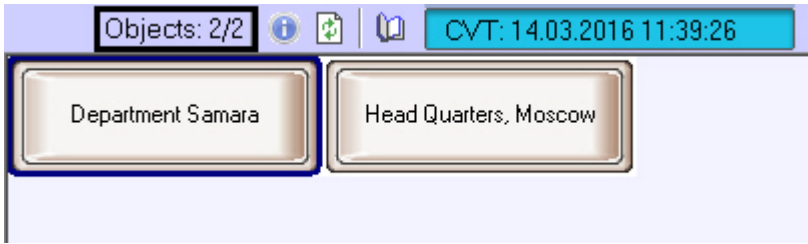
CVT: 14.03.2016 11:39:26

To update display data click the  button. If there are new data in the database, they will be displayed on the Owner Panel.


Objects displayed on the Owner Panel

According to the user rights set at the stage of system configuration (see [Configuring the Monitoring interface object section](#))

n of Administrator's Guide), not all the owners registered in the system can be displayed on the Owner Panel. Information on the displayed and total number of owners is shown in the upper-left of the Owner Panel.



Viewing Event log for all objects

To view all the events logged in the *Monitoring* software package click the  (**Event log**) button on the Owner Panel. The **Event log** window appears. This table can be sorted by any column or the column can be filtered.


Alarm date	End	Name	ID	Confirm	Alarm type	Device	Proces
2/8/2014 12:01:15 AM		Partition Of Control 2	550017	<input type="checkbox"/>	No connection with object	Communication channel	
2/8/2014 12:08:55 AM	2/8/201	Partition Of Control 1	550016	<input checked="" type="checkbox"/>	No connection with object	192.168.56.1	2/8/201
2/8/2014 12:21:42 AM	2/8/201	Partition Of Control 1	550016	<input checked="" type="checkbox"/>	No connection with object	192.168.56.1	2/8/201
2/8/2014 12:24:19 AM		Partition Of Control 1	550016	<input type="checkbox"/>	Temperature sensors off	Set of temperature sensi	

View from date: 2/8/2014

Note. To view all the events logged for objects that belong to the selected owner, call the **Event log** window on the Control Panel – see [Event log](#).

Use the **Event log** window in the same way as you use it on the Control Panel – see [Event log](#).

Viewing details on alarms for all system objects

To view the details about all system objects click the  button on the Owner Panel. The **Details** window appears.

Object code	ID	Object code	Name	Camera	Disk, MB	Disks	Software ve
1	1	1	110 Avrora street				
	386	2	10 Nevsky prospekt				
	387	3	47 Sofyyskaya street				

Fields: ID

Note. To view all the events logged for objects that belong to the selected owner, call the **Details** window on the Control Panel .

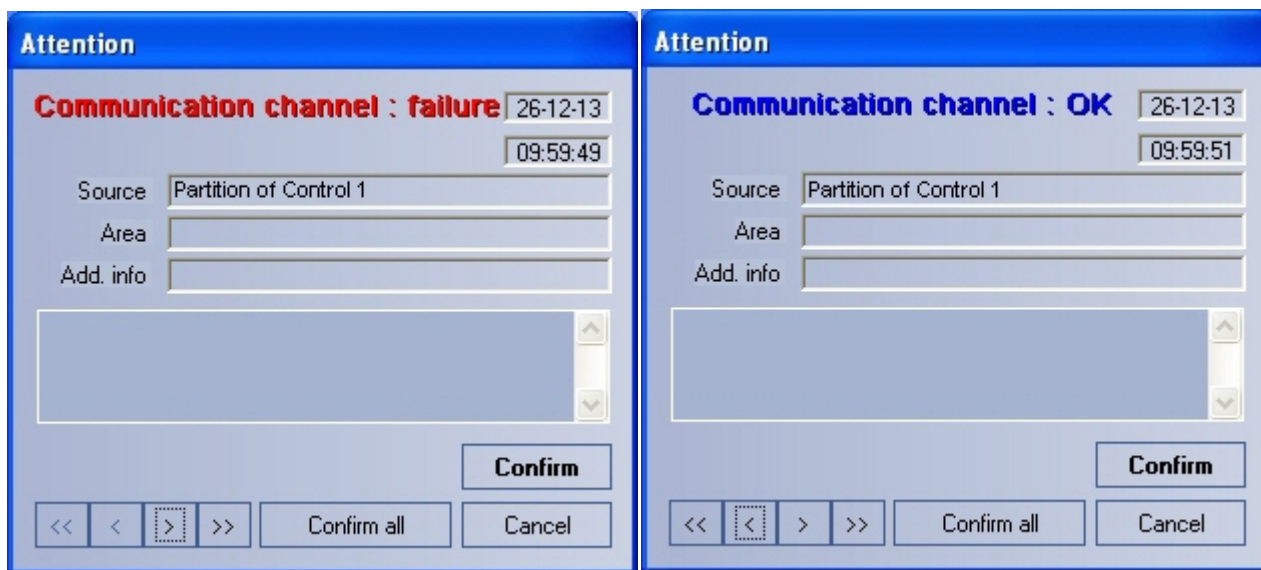
Use the **Details** window in the same way as you use it on the Control Panel and Log Panel – see [Information about an object](#).

Alarm message window

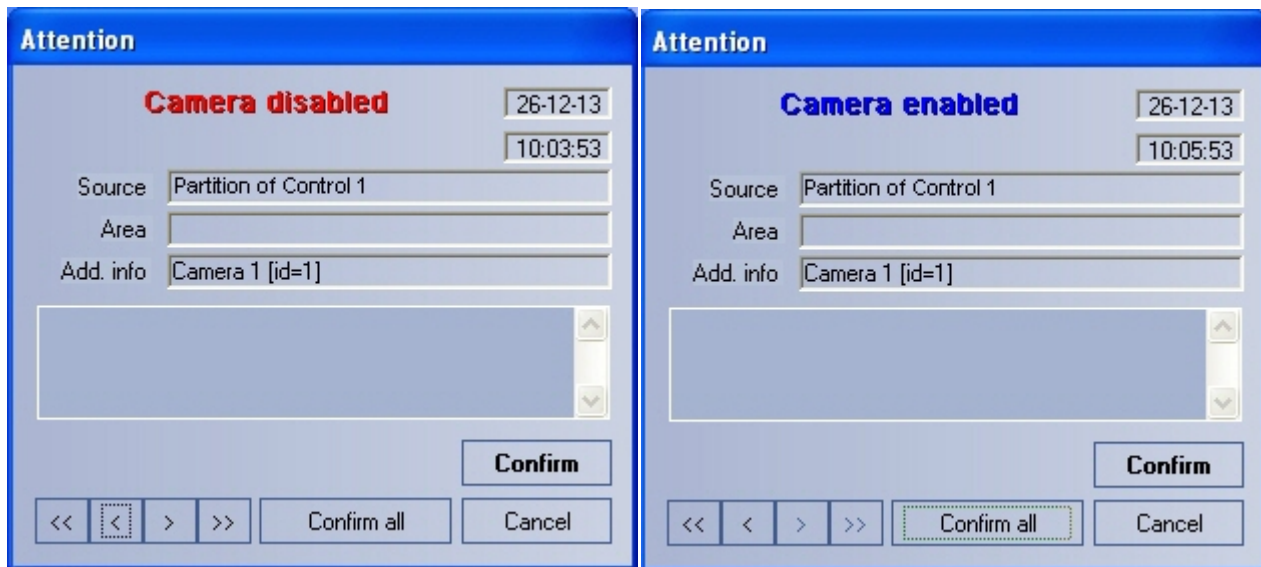
To attract the extra attention to alarm situations use the **Alarm messages window** object.



If there is the **Alarm messages window** object in the settings tree of *Intellect* software, the alarm situations will be displayed in the **Control panel** and **Log panel** interface objects and in the separate pop-up window. Examples of such pop-up windows are displayed in figures.



Alarm messages for Communication channel



Alarm messages for camera enabling and disabling

Search in archive

Purpose of the Search in archive component

The **Search in archive** component allows you to do the following:

1. Make and send requests for searching video frames with subtitles and receive video search results.

2. Make and send requests for video frames with or without subtitles and receive video search results.
3. Make and send requests (based on video search results) to an object's video archive, receive and view request results (video frames or video clips).
4. View and prints request results (video frames or video clips).

Request to a video archive by subtitles

To send a request to a video archive by subtitles (**By captions** mode), follow these steps:

1. Open the **Search in archive** component.

2. Select an object from the **Object name** list.
3. Make a request for archive search by using the following parameters:
 - a. In the **Period from:** field, set the date and time for the start of the search period.
 - b. In the **to:** field, set the date and time for the end of the search period.
 - c. Click the **By captions** option button.
 - d. Enter any keyword (available only if you click **By captions**).



Note.

If *Agent of control* software is installed with Intellect 4.10.0 or later versions, it is possible to use the * symbol while searching by titles to search for any number of any characters. Example:

card* -> search results will include captions containing words "card", "card-reader" etc.

card -> search results will include only captions containing word "card".

If *Agent of control* software is installed with Intellect 4.9.8 or previous versions, each word is implicitly framed in *. Example:

card -> search results will include captions containing words "card", "card-reader" etc.

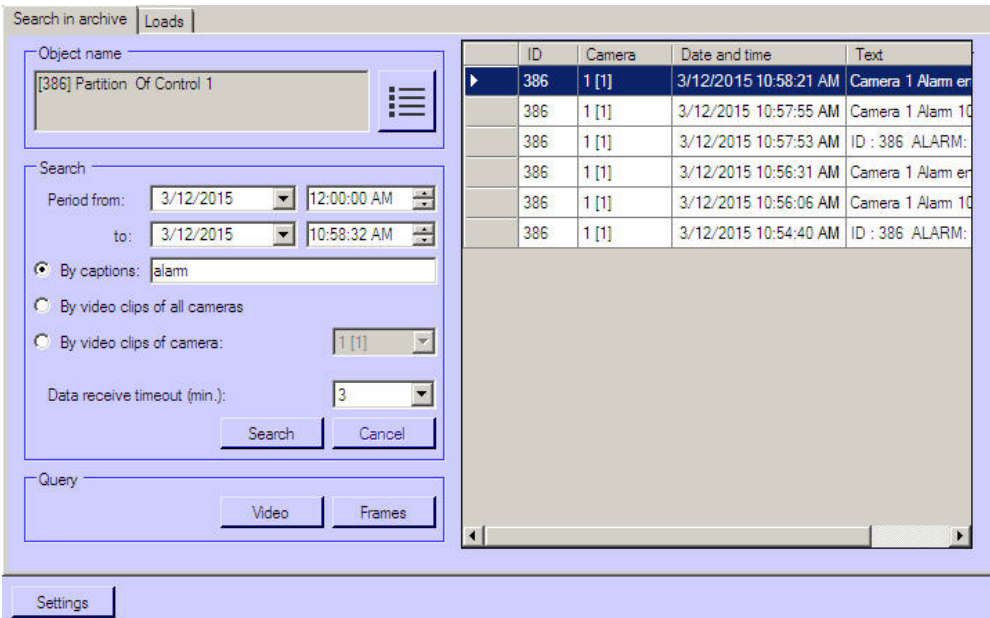
4. Set the waiting time by using the **Data timeout (min.)** field.
5. Click **Search**.



Note.

You can cancel the search at any moment by clicking **Cancel**.

6. If the search completes successfully, the search result is displayed as a list of lines. The number of lines in that list is limited to 500.



You can also make a request to the archive based on received data (see [Request for video frames from an object](#)).



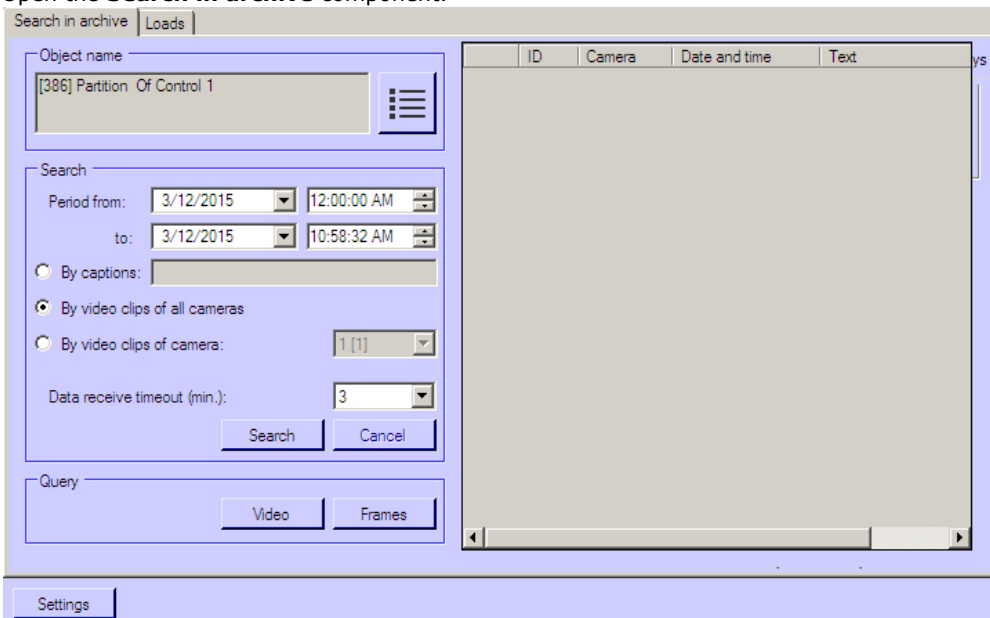
Attention!

This data is requested from *Intellect's* database at the object. If you want to change how long this data is stored, set the **Events archive length** parameter at the **Security zone** section at the **Programming** tab.

Request to a video archive by video clips

To send a request to the video archive by clips, follow these steps:

1. Open the **Search in archive** component.



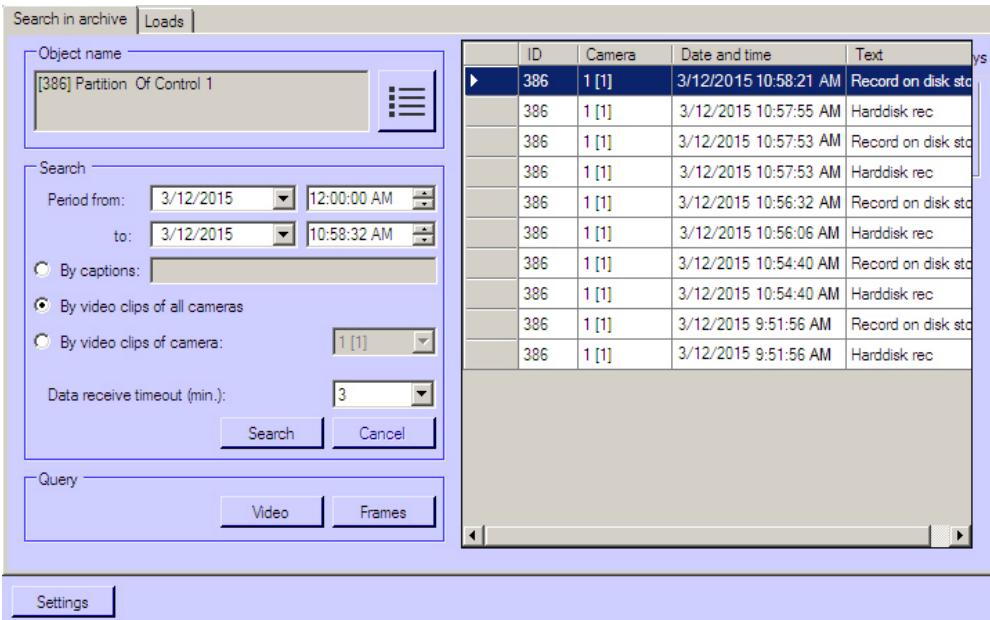
2. Select an object from the **Object name** list.
3. Make a request for archive search by using the following parameters:
 - a. In the **Period from:** fields, set the date and time for the start of the search period.
 - b. In the **to:** fields, set the date and time for the end of the search period.
 - c. Click the **By video clips on all cameras** option button.



Note.

To search by video clips on a certain camera, click the **By camera clips** option button. Then select the ID of the required camera from the drop-down list.

4. Click **Search**. If the search completes successfully, the search result is displayed as a list of lines. The number of lines in that list is limited to 500.



You can also make a request to the archive based on received data (see [Request for video frames from an object](#)).



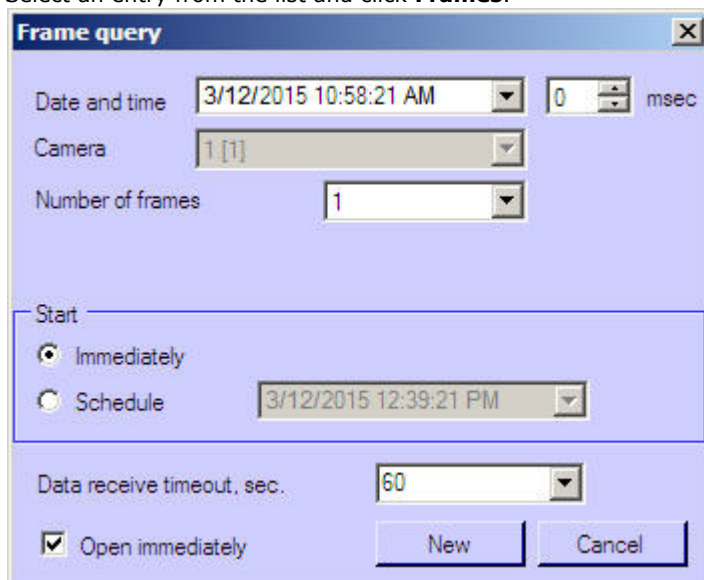
Attention!

This data is requested from *Intellect's* database at the object. If you want to change how long this data is stored, set the **Events archive length** parameter at the **Security zone** section at the **Programming** tab.

Request for video frames from an object

You can use received data to request video frames from archives. To do this, follow these steps:

1. Search by titles or clips as described above.
2. The search results are shown as a list of entries. Right click on the required entry. A context menu opens. The menu has two items: **Video query** and **Frame query**.
3. Select the **Frame query** item. The dialog form for the request opens. There is another way to open this form: Select an entry from the list and click **Frames**.



4. The **Date and time** and **Camera** fields are filled in automatically.
5. If you want to make a request with millisecond accuracy, use the **Msec** field.
6. If you select more than one frame, the parameter **Interval between frames** appears. Then enter the interval between frames (with millisecond accuracy).
7. in the **Start** area, select the time for sending the request: click either the **Immediately** option button or **Schedule** option button.
8. Set the waiting time by using the **Data receive timeout, sec.** field.
9. If the check box **Open immediately** is selected, the data is put into the video archive and shown immediately. Otherwise, the data is only sent to the archive. To view such data, use the **Monitoring reports** component.
10. After you fill in all the fields, click **New**.
11. You will get to the **Downloads** tab where the task performance process is displayed. If the data is loaded

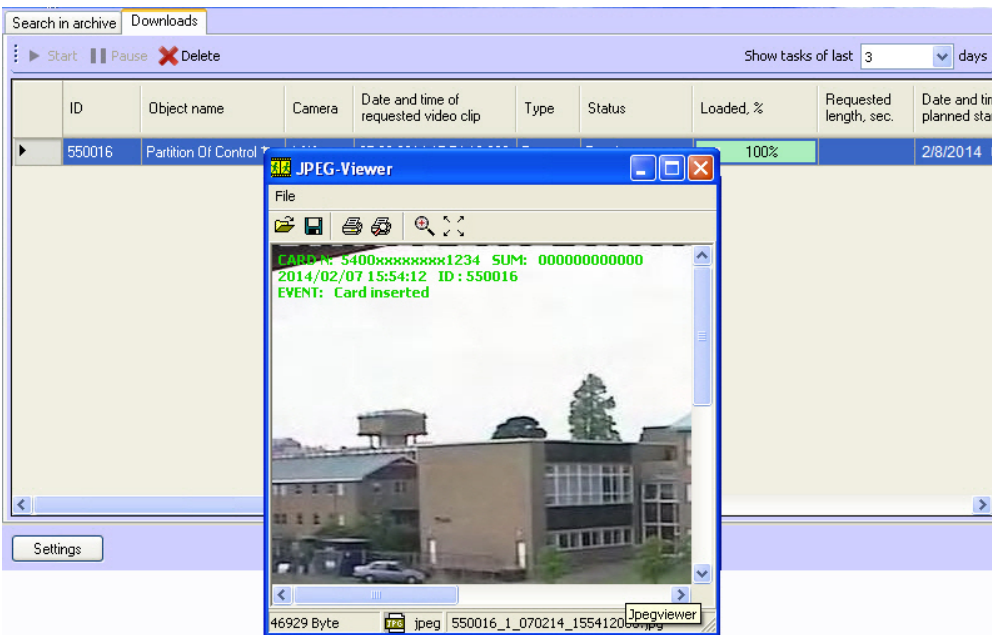
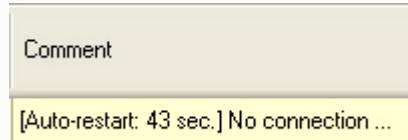
successfully and the **Open immediately** check box is selected, the loaded frame is shown on the screen.



Note.

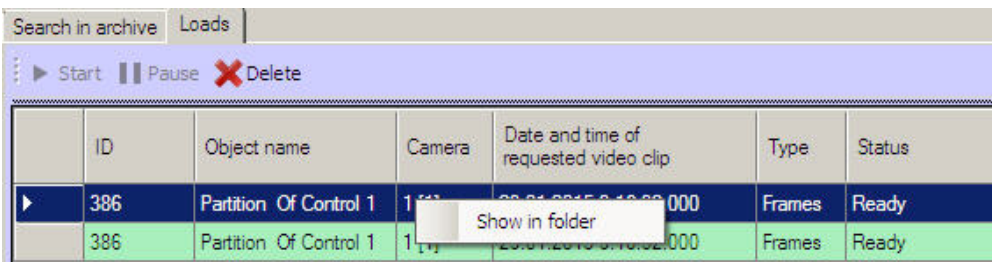
In case data have stopped coming during the download, for example if connection with the object is lost, download will be restarted after a random time interval from 1 to 60 seconds. In case of the attempt failure, attempts will be made at intervals of 1 minute.

Information on the time remaining to the restart is displayed in the **Comment** field. Any time you can restart loading manually using the **Restart** button.



Irrespective of the frame size, it is displayed at 352x288 in the opened window. To view the image in the original resolution, click the **Original size** button . To view the image in full screen mode click the **Full screen** button .

If frames are downloaded correctly, it is possible to go to the folder with these frames. For this right-click the corresponding frame and select the **Show in folder** item.



Request for video clips from objects

The **Search in archive** component allows you to request small video clips from an object. For that, follow these steps:

1. Search by titles or clips as described above.
2. The search results are shown as a list of entries. Right click on the required entry. A context menu opens. The menu has two items: **Video request** and **Frame request**.
3. Select the **Video request** menu item. A dialog form for the request opens. There is another way to open this form: Select an entry from the list and click **Video**.

4. The **Date and time** and **Camera** fields are filled in automatically.
5. Use the **Length (sec)** field to limit video clips by time.
6. If you want to decrease network load, set the **Bandwidth** **KBps** field to the appropriate value.
7. In the **Start** area, select the time for sending the request: Click either the **Immediately** option button or **Schedule** option button.
8. Set the waiting time by using the **Data receive timeout, sec.** field.
9. If the check box **Open immediately** is selected, the data is put into the video archive and shown immediately. Otherwise, the data is only sent to the archive. To view such data, use the **Monitoring reports** component.
10. If you try to set the value of the **Length (sec)** field to over 120, the value of 120 is offered. This is done to remind the user that such requests can export a big data file from a video archive on *Agent Of Control's* side. If you want to turn this limitation off, click **Settings** in the lower-left area of the **Search in archive** area. A window opens. In the window, change the value of the **Maximum length of loaded video clip, sec** field.

11. After you fill in all the fields, click **New**.
12. You will get to the **Loads** tab where the task performance process is displayed. While the video clip is being downloaded, its file size, loaded size, and transfer rate are shown. You can pause the download at any moment by clicking **Pause**.

ID	Object name	Camera	Date and time of requested video clip	Type	Status	Loaded, %	Requested length, sec	Date planned
550016	Partition Of Control 1	1 [1]	2/7/2014 15:54:12.000 AM	Video	Loading	12%	3	2/8/
550016	Partition Of Control 1	1 [1]	2/7/2014 15:54:12.000 AM	Frames	Ready	100%		2/8/



Note.

In case data have stopped coming during the download, for example if connection with the object is lost, download will be restarted after a random time interval from 1 to 60 seconds. In case of the attempt failure, attempts will be made at intervals of 1 minute.

Information on the time remaining to the restart is displayed in the **Comment** field. Any time you can restart loading manually using the **Restart** button.

Comment
[Auto-restart: 43 sec.] No connection ...

- If the data is loaded successfully and the **Open immediately** check box is selected, the downloaded clip is played with *Axxon Player*.



The successfully completed task is marked in green. Double click such entry to see the corresponding frame or play the corresponding video clip. It is also possible to go to the folder with downloaded videos. For this right-click the corresponding frame and select the **Show in folder** item.

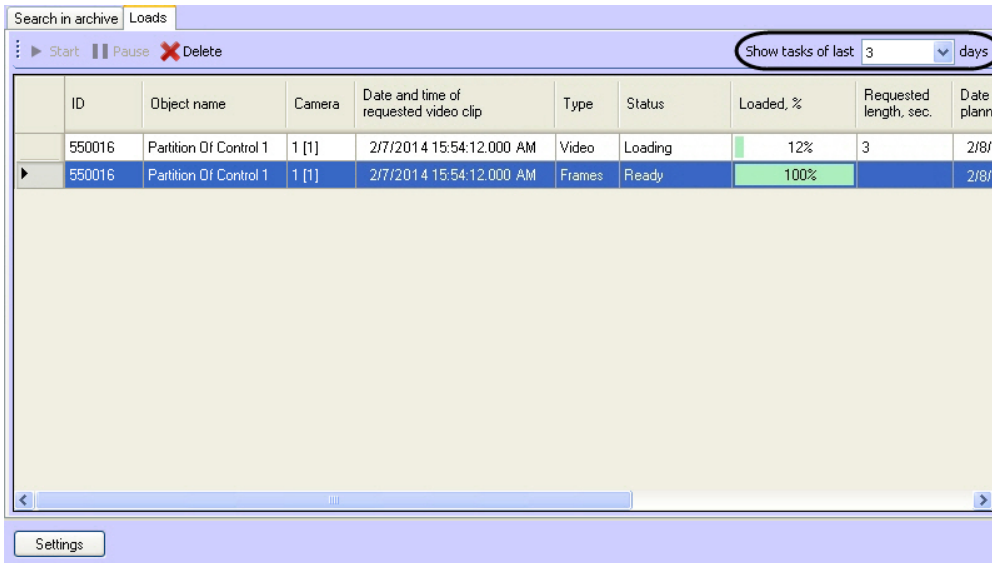
ID	Object name	Camera	Date and time of requested video clip	Type	Status
386	Partition Of Control 1	1	2013-08-29 16:23:00	Video	Ready
386	Partition Of Control 1	1	2013-08-29 16:23:00	Frames	Ready

The **Search in archive** component supports the download resume function. If the connection to **Agent Of Control** breaks during a download, the task status changes to Network Error after two minutes' time-out. The **Comment** field shows the information that the data is no longer being transferred. Ten seconds later the system start periodic attempts to resume the download. It tries to do it every minute. After the connection to *Agent Of Control* is reestablished, the data is downloaded not from the beginning, but from the point where the connection was lost.

The download resume function uses temporary files. They are saved both on *Agent Of Control* and on *Server Of Control*. These files are stored for three days. After that, they are removed. For example, if you start a download, then click **Pause**, and resume the download five days later, the download starts from the beginning.

To change the storage period for the temporary files, go to the registry and create the value "StoreVideoFiles" in the HKLM\SOFTWARE\BITS\Software\HostService registry branch and enter the required data in days. Then restart Videosrv.exe.

If you want to remove old tasks from the task list, go to **Loads** tab and click **Delete** button. Tasks are stored in the database for max. 100 days. If you want to limit the number of tasks that are shown in the **Loads** tab, use the **Show tasks of last N days** field in upper-right corner of the screen.



Attention!

1. If you request a clip that is longer than one minute, you have to increase the value of the **Data receive timeout, sec.** parameter. You must do it, because some time is required for *Agent Of Control* to export large video clip.
2. If *Intellect* closes, all tasks with the "Loading" status are paused. Start these tasks manually to resume download.

Monitoring Reports

Purpose of Monitoring Reports

Use the **Monitoring reports** component to automate the processing of statistical information on system performance. You can create reports of the following types:

1. Hardware failures report.
2. Alarms report.
3. Video report.
4. Statistical report.
5. Statistical report by owners.

General view of **Monitoring reports** window is shown in figure.



Note.

Format of date and time present in reports depends on system regional and language options.

Hardware failures reports

To start creating a report, click **System failures**.



A modal window opens. In this window, you can set the parameters needed to create the report.

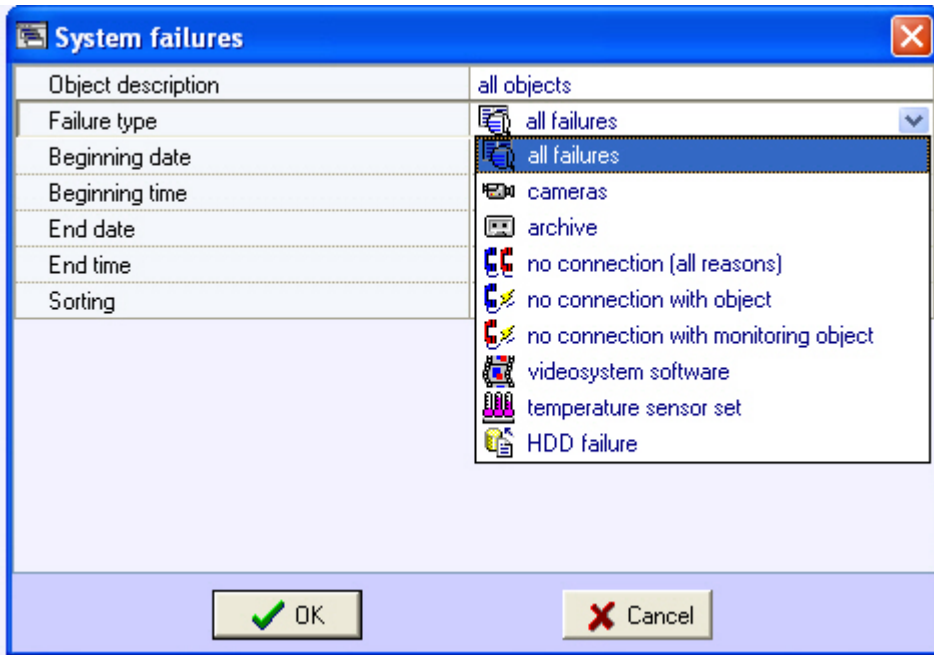
Field	Value
Object description	all objects
Failure type	all failures
Beginning date	2/8/2014
Beginning time	12:00:00 AM
End date	2/8/2014
End time	12:27:28 AM
Sorting	event

You can set the following report parameters:

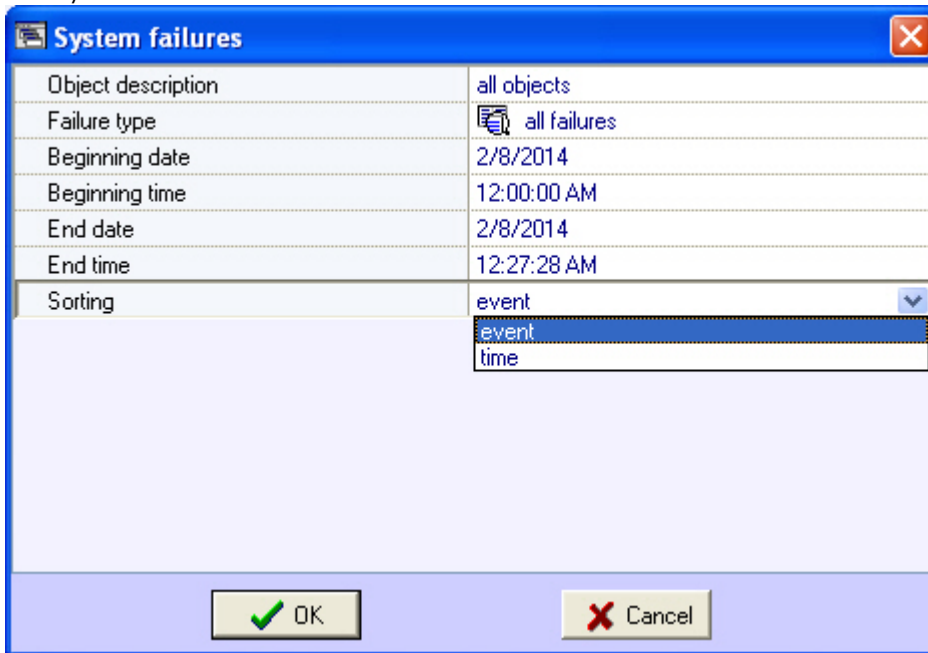
1. The time range of the report. Use the **Beginning date**, **Beginning time**, **End date**, and **End time** fields.
2. **Object description**. You can use this field to choose between two report modes:
 - a. Report on all the system objects.
 - b. Report on one system object.

Field	Value
Object description	all objects
Failure type	all objects Partition Of Control 1 Partition Of Control 2
Beginning date	2/8/2014
Beginning time	12:00:00 AM
End date	2/8/2014
End time	12:27:28 AM
Sorting	event

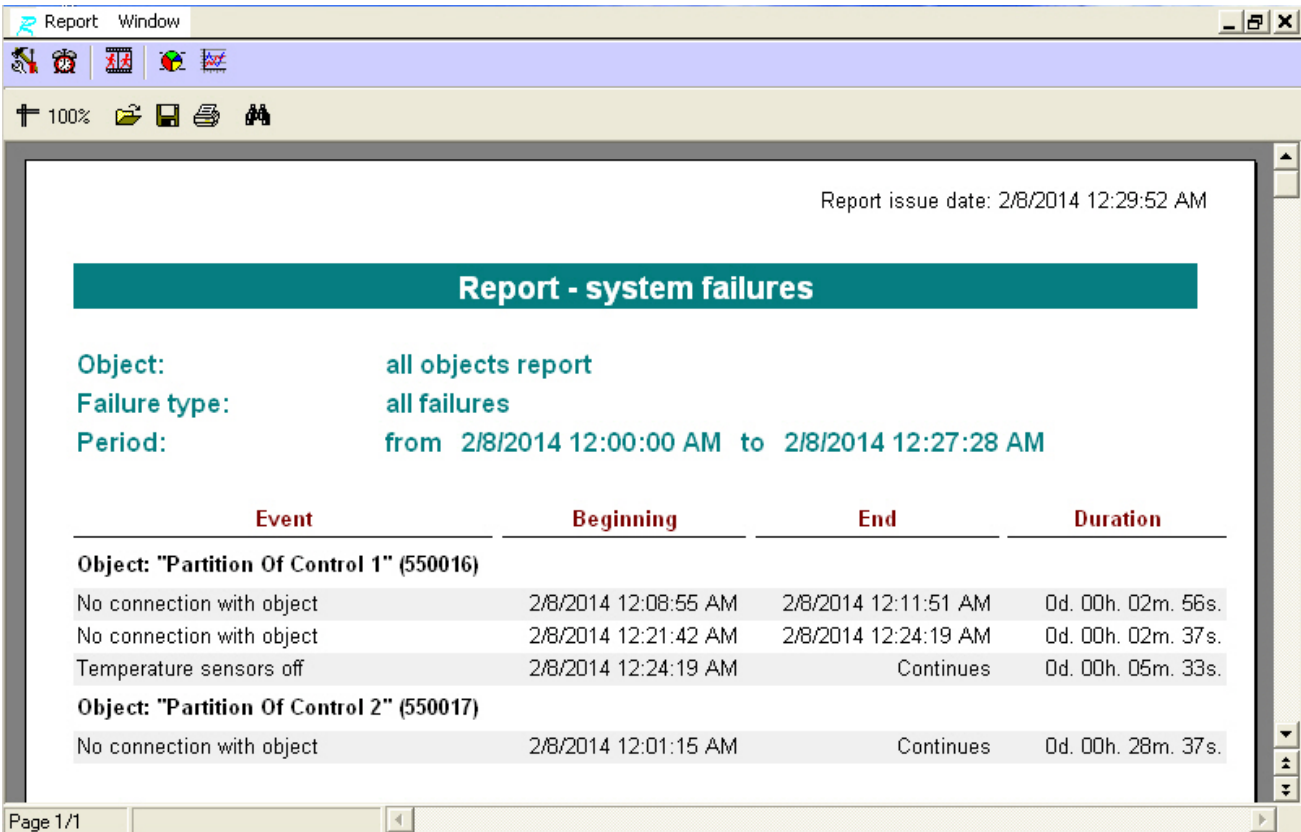
3. **Failure type** You can use this field to specify the failure type for which to create the report. You can also create a report on all the failures within a certain time period.



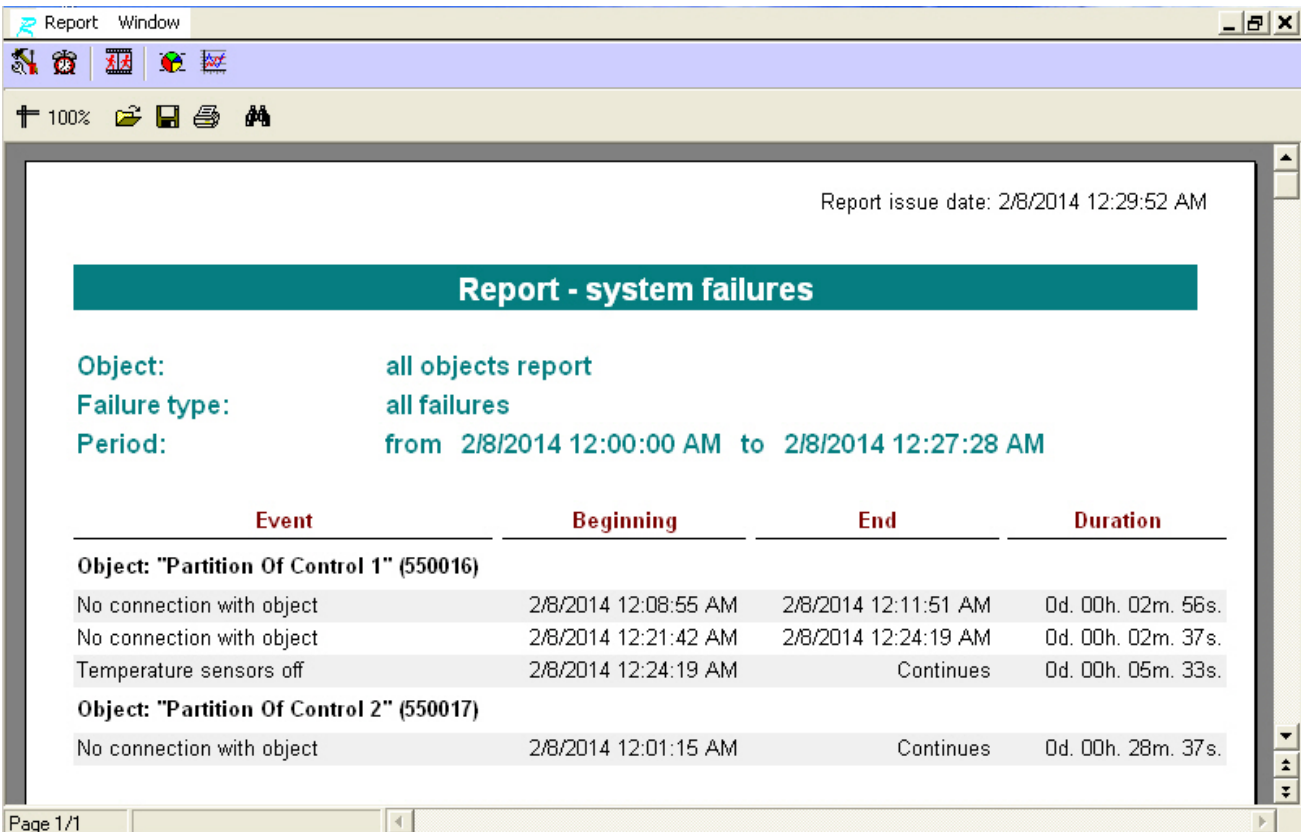
4. **Sorting.** You can use two sorting modes when creating a report:
- Sort by events (**Cameras, Archive**, etc.).
 - Sort by event start time.



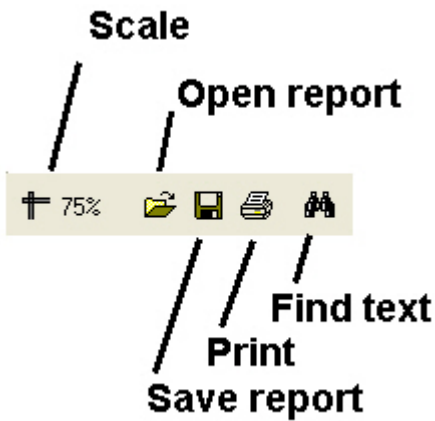
After you configure all the parameters, click **OK**. You can see the report in a separate window.



The same report for one object looks as shown in the figure.



Each report window contains a tool bar.



Here are some details on the **Save report** and **Open report** buttons. For example, if there is no printer at the place where the **Monitoring Reports** component is installed or if you want to save your report in electronic form to view it later, you can save the report as a FRP, XLS, XML, RTF, or HTML file. Then you can open the report on another computer.

Alarms reports

To start creating a report, click **Alarms**.

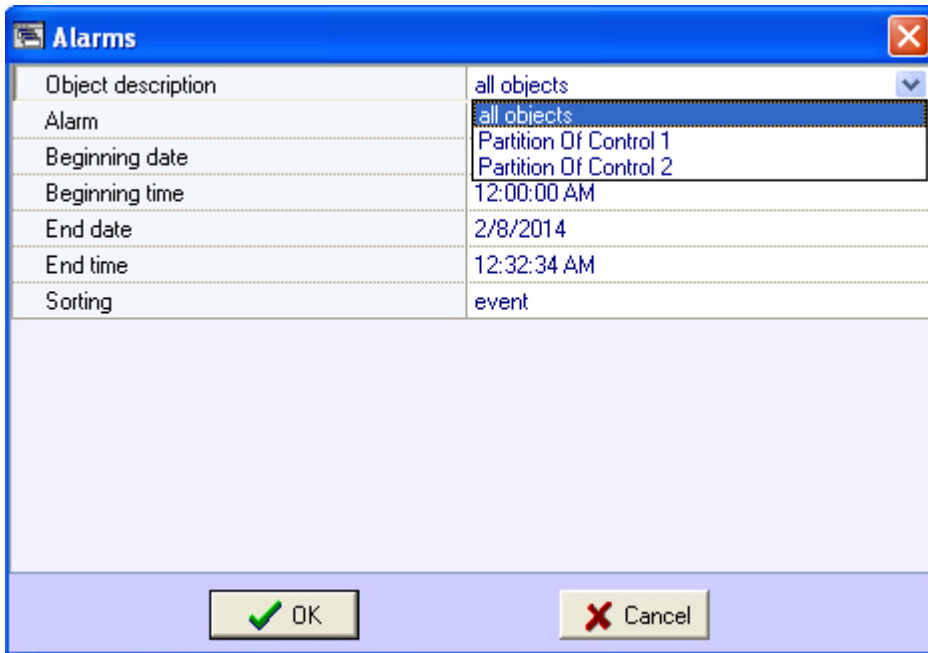


A modal window opens. In this window, you can set the parameters needed to create the report.

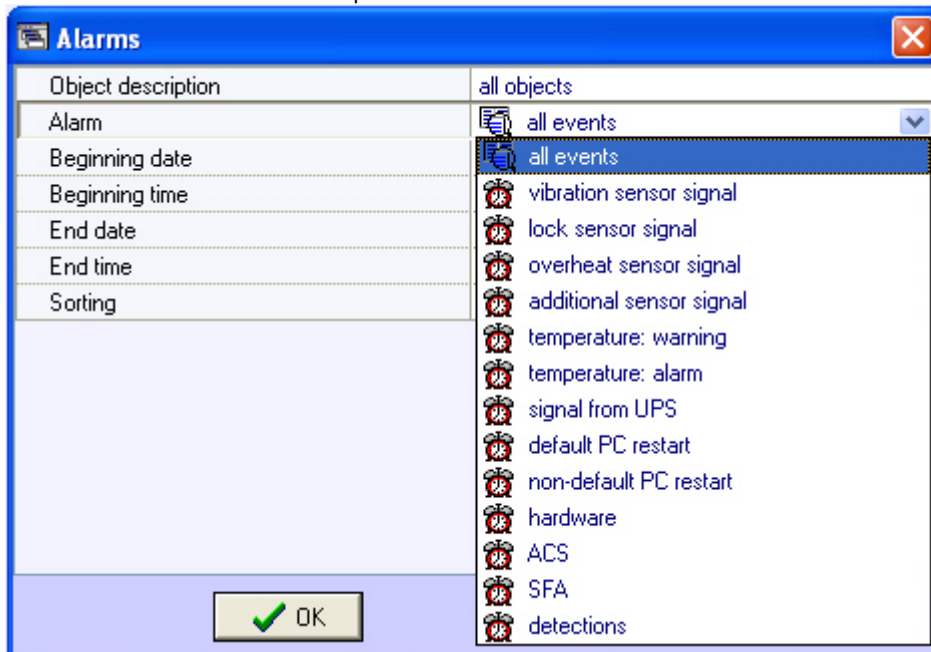
Alarms	
Object description	all objects
Alarm	all events
Beginning date	2/8/2014
Beginning time	12:00:00 AM
End date	2/8/2014
End time	12:32:34 AM
Sorting	event

You can set the following report parameters:

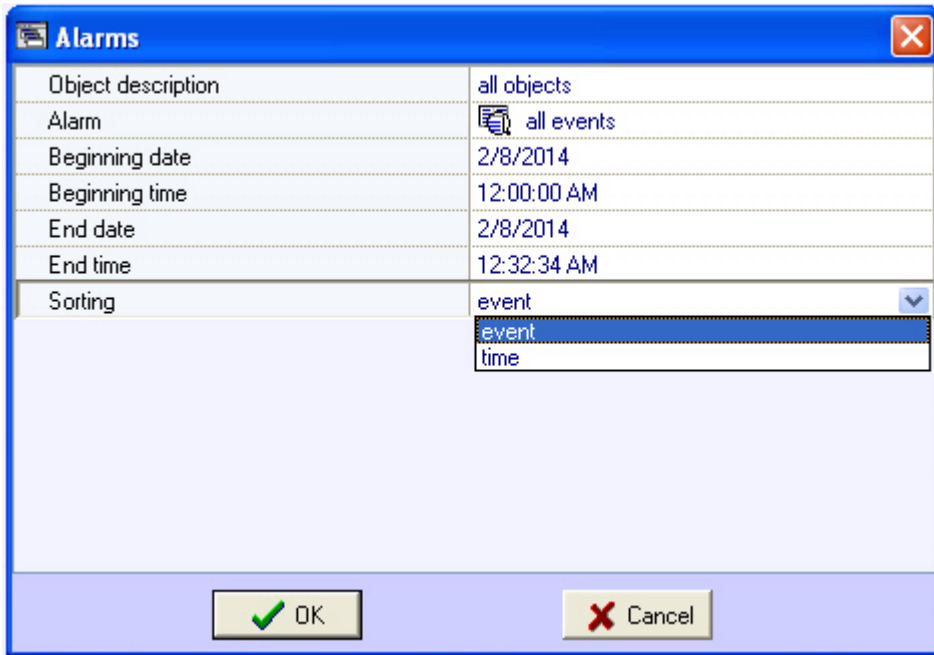
1. The time range of the report. Use the **Beginning date**, **Beginning time**, **End date**, and **End time** fields.
2. **Object description**. You can use this field to choose between two report modes:
 - a. Report on all the system objects.
 - b. Report on one system object.



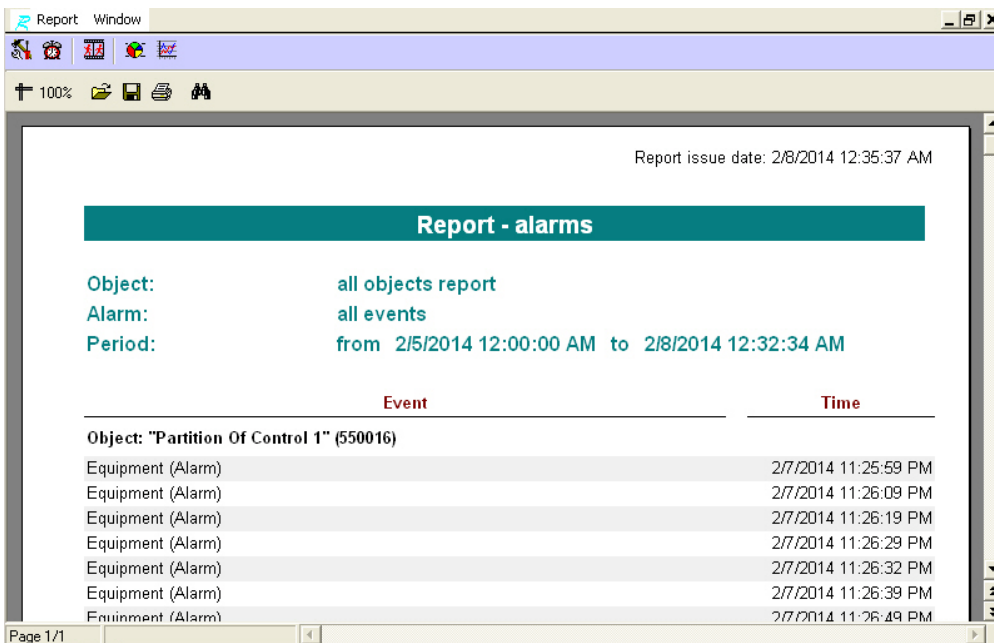
3. **Alarm.** You can use this field to specify a certain alarm for creating the report. You can also create a report on all the alarms within a certain time period.



4. **Sorting.** You can use two sorting modes when creating a report:
- Sort by events (**Vibration sensor signal, Lock sensor signal, etc.**).
 - Sort by event start time.



After you configure all the parameters, click **OK**. You can see the report in a separate window.



Video report

To start creating a report, click **Video report**.



A window opens. In this window, you can set the parameters needed to create the report.

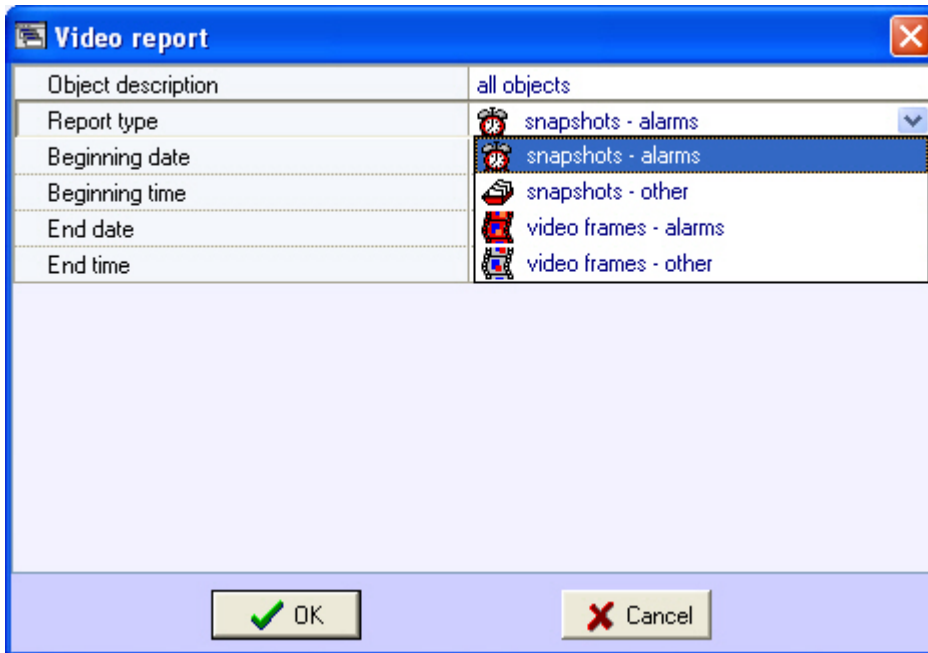
Object description	all objects
Report type	snapshots - alarms
Beginning date	2/5/2014
Beginning time	12:00:00 AM
End date	2/8/2014
End time	11:59:59 PM

You can set the following report parameters:

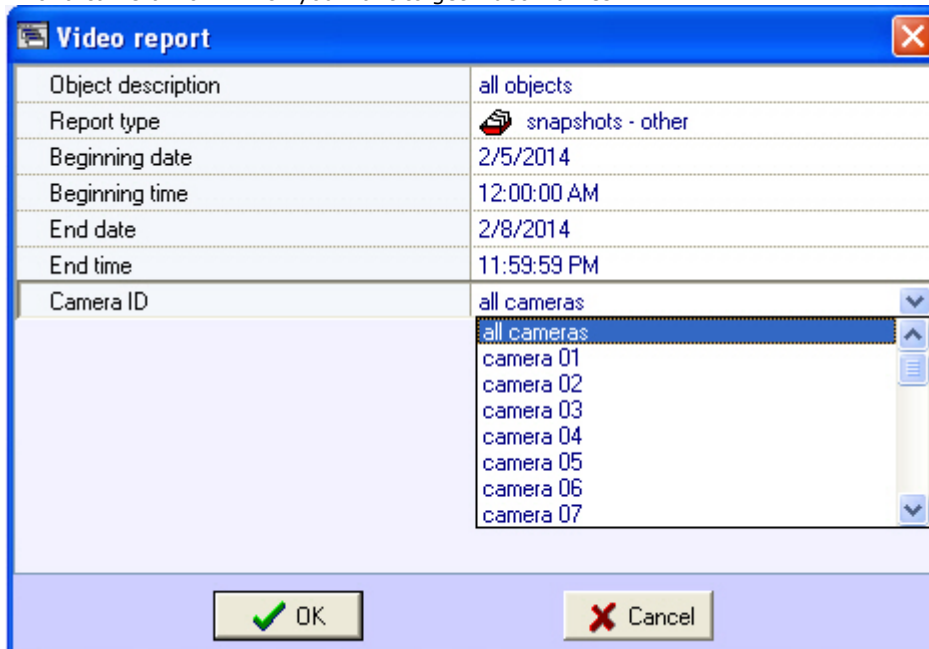
1. The time range of the report. Use the **Beginning date**, **Beginning time**, **End date**, and **End time** fields.
2. **Object description**. You can use this field to choose between two report modes:
 - a. Report on all the system objects.
 - b. Report on one system object.

Object description	all objects
Report type	all objects
Beginning date	Partition Of Control 1
Beginning time	Partition Of Control 2
End date	12:00:00 AM
End time	2/8/2014
	11:59:59 PM

3. **Report type**. You can use this field to select one of the four report types:
 - a. **Video frames – Alarms**. These are video frames received after an alarm sensor goes off at the object (**Vibration sensor signal**, **Lock sensor signal**, etc.).
 - b. **Video frames – Others**. These are video frames received during an arbitrary request to the video archive.
 - c. **Snapshots – Alarms**. These are video clips received after an alarm sensor goes off at the object.
 - d. **Snapshots – Others**. These are video clips received during an arbitrary request to the video archive.



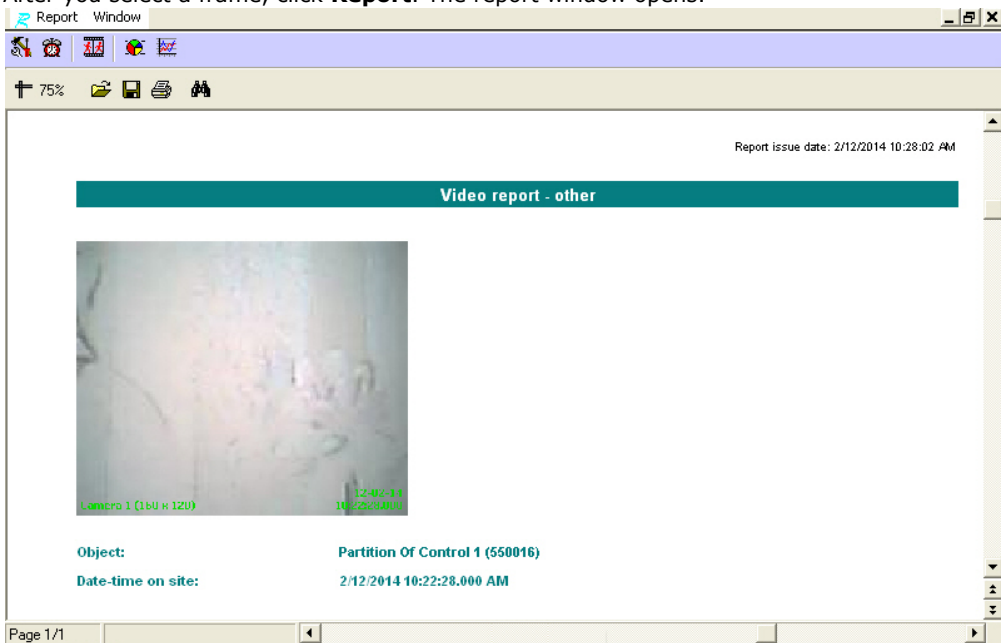
- If you select **Video frames – Others**, you can edit the **Camera ID** parameter. Use this parameter to specify the ID of a camera from which you want to get video frames.



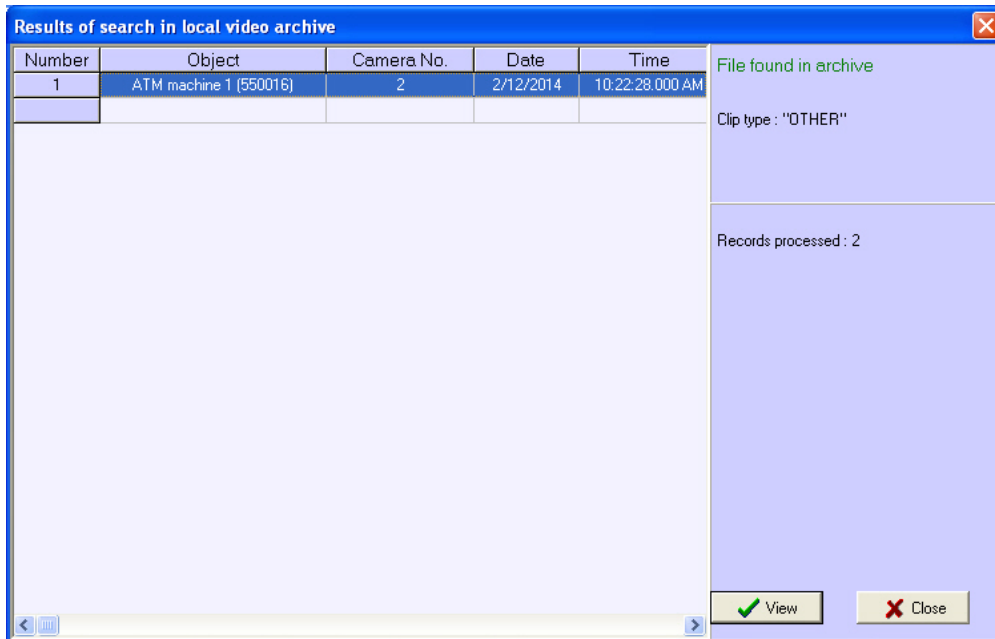
After you configure all the parameters, click **OK**. You can see the results of the search by the specified criteria in the separate window.



After you select a frame, click **Report**. The report window opens.



After you search for video clips, you can select any entry and play a clip by clicking **View**. The video clip is played with Axxon Player.



Searching for snapshots and videos is performed through files that have been downloaded using the **Search in archive** component or received with alarms. This search is performed by archive time, but not by download time.

Statistical reports

To start creating a report, click **Statistics**.



A window opens. In this window, you can set the parameters needed to create the report.

Statistics	
Object description	all objects
Beginning date	2/8/2014
Beginning time	12:00:00 AM
End date	2/8/2014
End time	01:05:39 AM
Include number of cameras on site	<input checked="" type="checkbox"/>
Include archive errors	<input type="checkbox"/>
Show alarms	<input type="checkbox"/>
Detailed report	<input type="checkbox"/>

OK Cancel

You can set the following report parameters:

1. The time range of the report. Use the **Beginning date**, **Beginning time**, **End date**, and **End time** fields.
2. **Object description**. You can use this field to choose between two report modes:
 - a. Report on all the system objects.
 - b. Report on one system object.

Statistics	
Object description	all objects
Beginning date	all objects
Beginning time	Partition Of Control 1
End date	Partition Of Control 2
End time	2/8/2014
End time	01:05:39 AM
Include number of cameras on site	<input checked="" type="checkbox"/>
Include archive errors	<input type="checkbox"/>
Show alarms	<input type="checkbox"/>
Detailed report	<input type="checkbox"/>

OK Cancel

3. **Include number of cameras on site**. If you select this check box, the non-readiness rates for the cameras and archives are calculated taking into account all the cameras of the object.
4. **Include archive errors**. If you select this check box, the non-readiness rates for the the whole system are calculated taking into account the non-readiness rates for the archives.
5. **Show alarms**. If you select this check box, alarm information from the object(s) is added to the report.
6. If you set the **Object description** parameter to **All objects**, you can edit the **Detailed report** parameter. If you do NOT select this check box, a generalized statistical report on the system is created.

If you select the **Detailed report** check box, then **Sorting**, **Sort**, and **Availability factor threshold** parameters become available. In this case, a detailed statistical report on the system is created.

Statistics	
Object description	all objects
Beginning date	2/8/2014
Beginning time	12:00:00 AM
End date	2/8/2014
End time	01:05:39 AM
Include number of cameras on site	<input checked="" type="checkbox"/>
Include archive errors	<input type="checkbox"/>
Show alarms	<input type="checkbox"/>
Detailed report	<input checked="" type="checkbox"/>
Availability factor threshold	<input type="checkbox"/>
Sorting	without sorting
Sort	descending

OK Cancel

7. **Sorting**. This field allows you to sort statistical data by certain criteria.

Statistics	
Object description	all objects
Beginning date	2/8/2014
Beginning time	12:00:00 AM
End date	2/8/2014
End time	01:05:39 AM
Include number of cameras on site	<input checked="" type="checkbox"/>
Include archive errors	<input type="checkbox"/>
Show alarms	<input type="checkbox"/>
Detailed report	<input checked="" type="checkbox"/>
Availability factor threshold	<input type="checkbox"/>
Sorting	without sorting
Sort	without sorting

OK

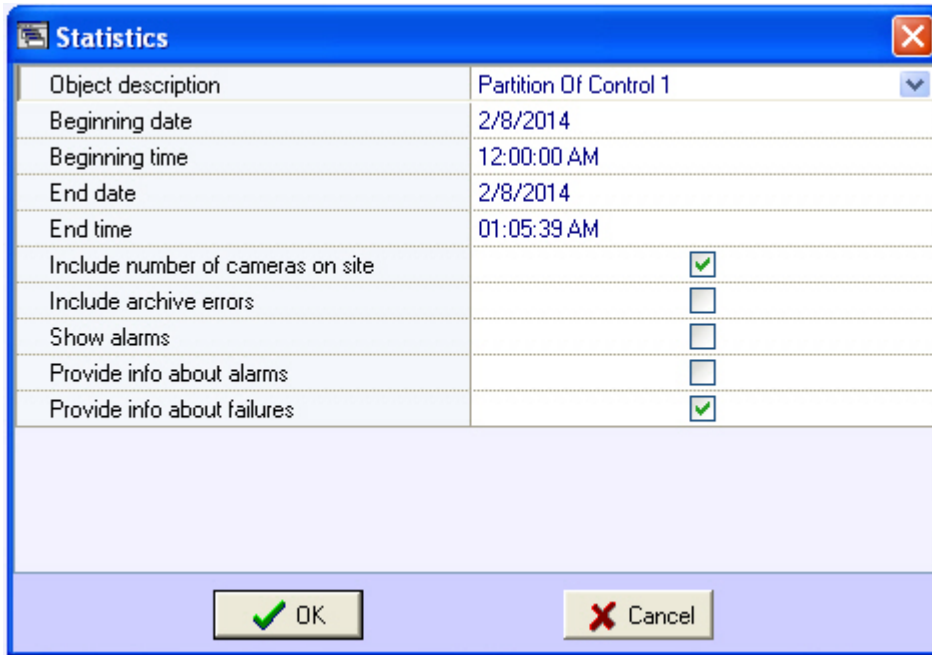
8. **Sort**. Use this field to set the sort order (ascending or descending).

Statistics	
Object description	all objects
Beginning date	2/8/2014
Beginning time	12:00:00 AM
End date	2/8/2014
End time	01:05:39 AM
Include number of cameras on site	<input checked="" type="checkbox"/>
Include archive errors	<input type="checkbox"/>
Show alarms	<input type="checkbox"/>
Detailed report	<input checked="" type="checkbox"/>
Availability factor threshold	<input type="checkbox"/>
Sorting	without sorting
Sort	descending
	ascending
	descending

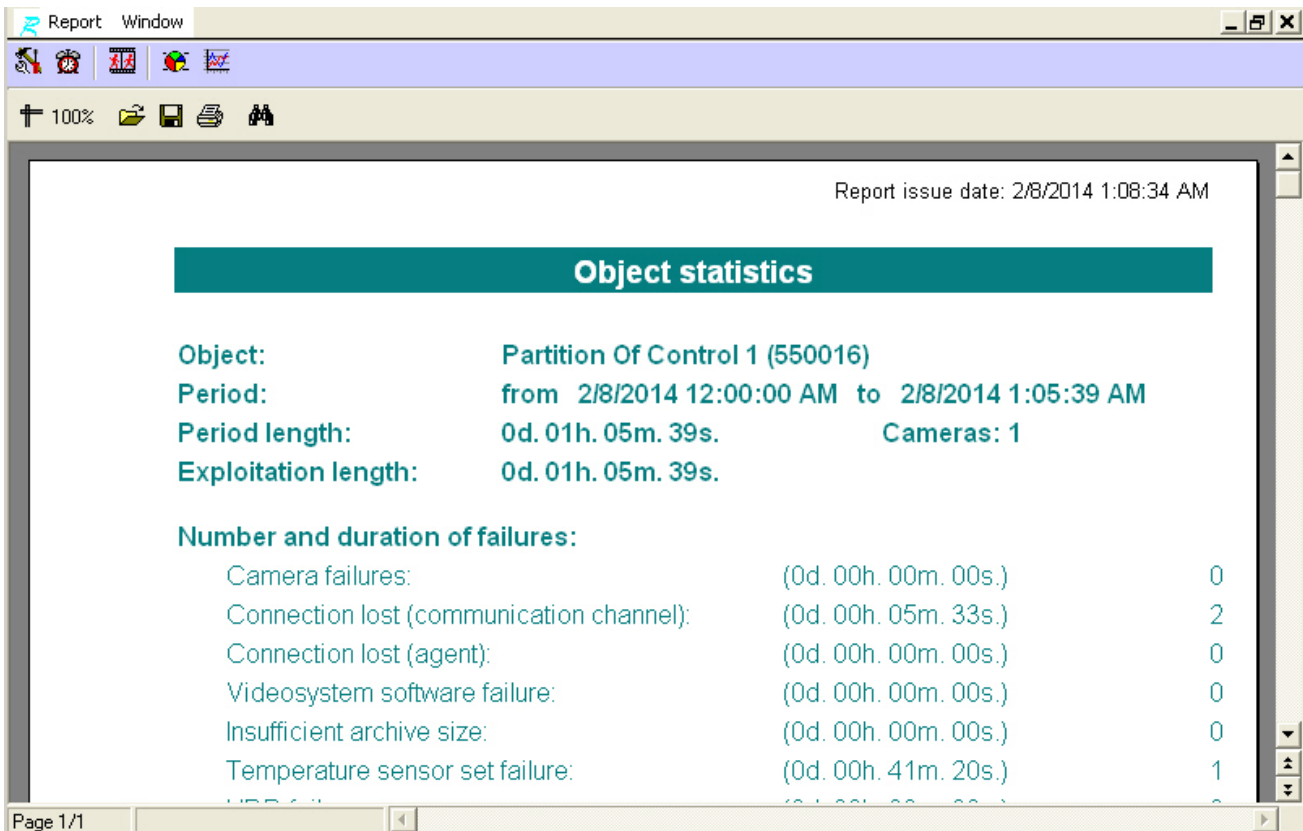
9. If you select the **Availability factor threshold** check box, the **Threshold Value (%)** and **Condition** fields become available. Use this fields to sort objects by an additional condition, the threshold for the readiness rate.

Statistics	
Object description	all objects
Beginning date	2/8/2014
Beginning time	12:00:00 AM
End date	2/8/2014
End time	01:05:39 AM
Include number of cameras on site	<input checked="" type="checkbox"/>
Include archive errors	<input type="checkbox"/>
Show alarms	<input type="checkbox"/>
Detailed report	<input checked="" type="checkbox"/>
Availability factor threshold	<input checked="" type="checkbox"/>
Threshold value, %	90
Condition	lower than threshold
Sorting	without sorting
Sort	descending

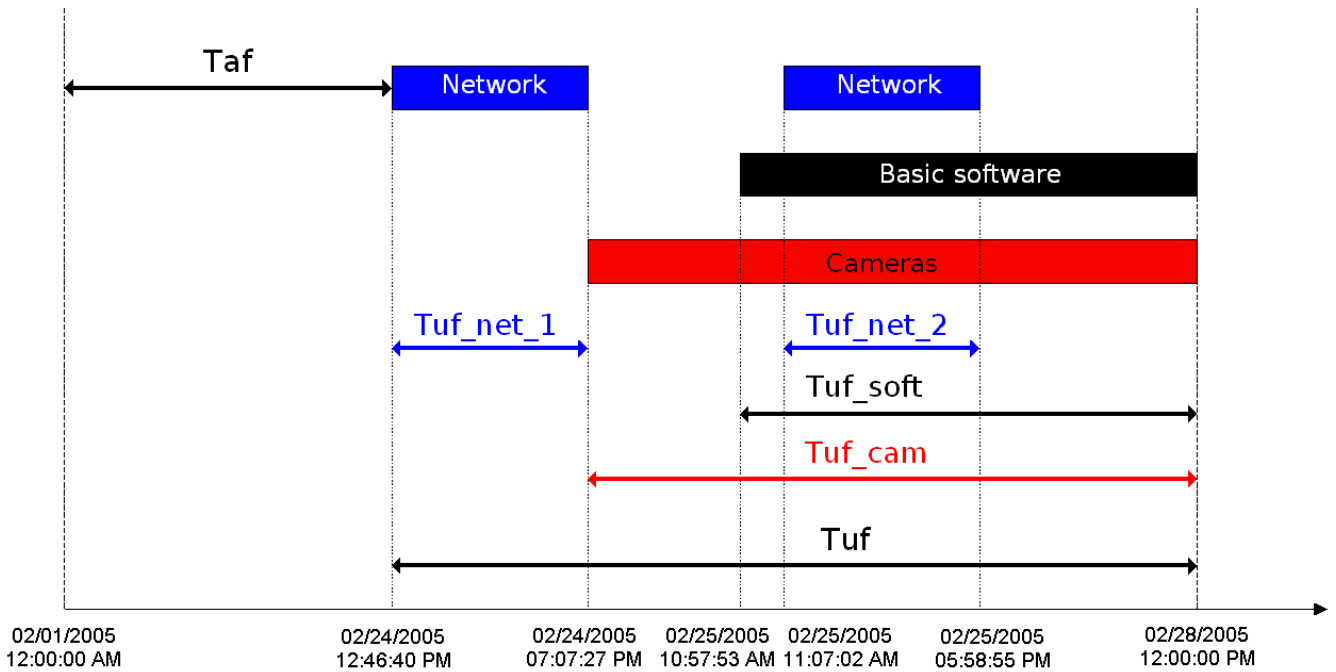
10. **Threshold Value (%)**. Use this field to set a threshold (between 0 and 100 %).
11. **Condition**. Use this field to set an object filtering condition: **lower than threshold** or **higher than threshold**.
12. If you set the **Object description** field to a certain object, you can edit the **Provide info about alarms** and **Provide info about failures** parameters. Select these check boxes if you want to include detailed information on failures and alarms in the report.



After you configure all the parameters, click **OK**.
 The following figure shows a sample report on one object.



The following figure shows an example of different failures at an object. Then readiness and non-readiness rates are calculated.



This example uses the time period from 12 a.m. on February 1, 2005, to 12 p.m. on February 28, 2005, to create a statistical report. The readiness rate of an object is calculated as a ratio between the duration of the time period when the object was functioning and the duration of the time period used for the report:

$$Rr = \text{Taf} / (\text{Taf} + \text{Tuf})$$

The following types of failure are used for reports:

- Connection
- Core software
- Cameras

The non-readiness rates of the object in our example are calculated according to the below formulas.

Connection non-readiness:

$$Rn_c = (\text{Tuf_net_1} + \text{Tuf_net_2}) / (\text{Taf} + \text{Tuf})$$

Software non-readiness:

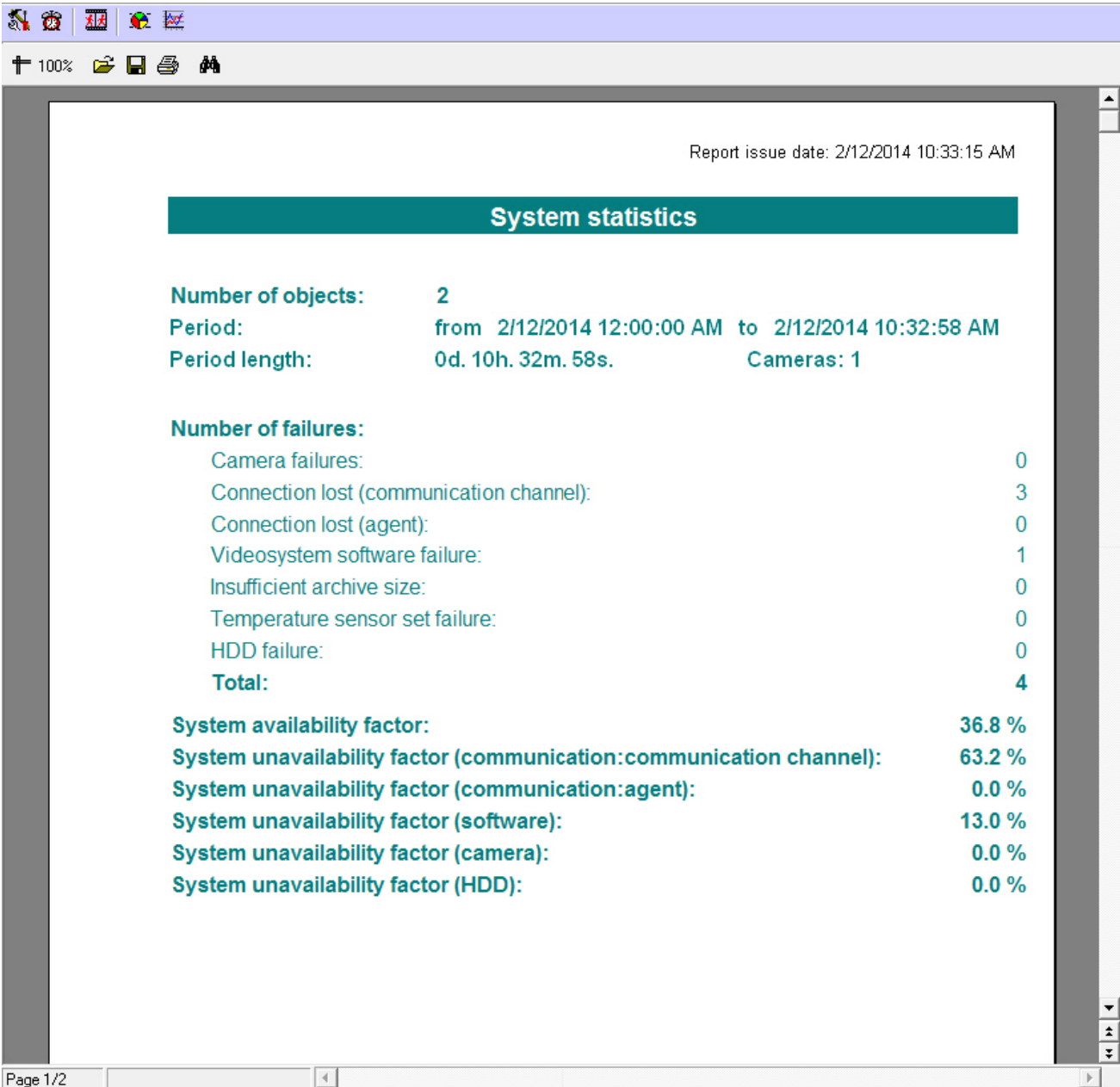
$$Rn_{sw} = \text{Tuf_soft} / \text{Taf} + \text{Tuf}$$

Camera non-readiness:

$$Rn_{cam} = \text{Tuf_cam} / \text{Taf} + \text{Tuf}$$

Generally, in this model, the non-readiness rate Rn is not equal to the sum of all the non-readiness rates for all failures.

The following figure shows a sample general report for the entire system. The readiness and non-readiness rates in the report are calculated as the arithmetic mean.



When you create a detailed report for the entire system, in addition to the general information page, you get a table that contains detailed data for each object.

Object	Number of failures							Kg, %	UF_com (chan.), %	UF_com (agent), %	UF_sw, %	UF_cam, %	UF_hdd, %	UF_arc, %
	Cameras	Com. (chan.)	Com. (agent)	Software	Archive	Temp. sens. set	HDD							
Partition Of Control 1	0	2	0	0	0	1	0	91.5	8.5	0	0	0	0	0

If you select the **Readiness rate threshold** check box when you create a detailed report for entire system, the first page looks as shown in the following figure.



Attention!

If you create a statistical report on all the objects and a number of failures for the specified period exceeds 1000 for a particular object, then such object is excluded from the report. In this case, a list of such objects is shown.

Statistical reports by owners

This type of report uses only objects for which the **Owner** field is filled in in the **Monitoring objects** reference book (see the **Filling out reference books** section). To start creating a report, click **Statistics by owners**.



A window opens. In this window, you can set the parameters needed to create the report.

You can set the following report parameters:

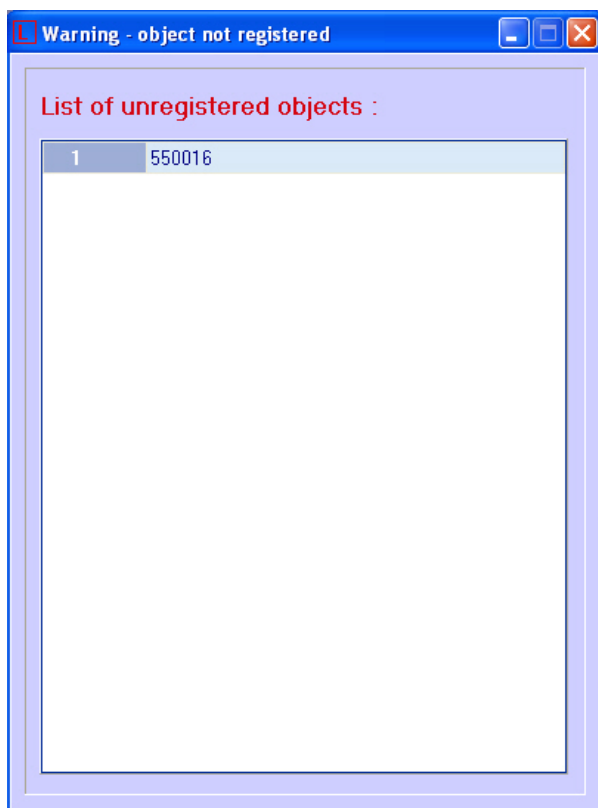
1. The time range of the report. Use the **Beginning date** and **Beginning time** fields.
2. **Snapshot**. If you select this check box, the report is created for the specified date and time. Otherwise, the report is created for the entire day specified in the **Beginning date** field.

The following figure shows a sample statistical report by owners.

№	Owner name	Total objects (total with errors)	General availability factor, %	Unavailability factor in % (number)					
				Cameras	Connection with object	Connection with monitoring agent	Software error	Archive	HDD error
1	The main office	1 (0)	100.0	0.0 (0)	0.0 (0)	0.0 (0)	0.0 (0)	0.0 (0)	0.0 (0)
2	The secondary office	1 (1)	0.0	0.0 (0)	100.0 (1)	0.0 (0)	0.0 (0)	0.0 (0)	0.0 (0)
TOTAL :		2 (1)	50.0	0.0 (0)	50.0 (1)	0.0 (0)	0.0 (0)	0.0 (0)	0.0 (0)

Controlling unregistered objects

If an object that is not registered in the *Server of Control* settings (*Intellect*, the **Hardware** tab) connects to *Monitoring*, a dialog box opens and shows a warning for the operator. The message box informs about the unregistered object.



Appendix 1. Data update periods summary

Data loading from database to the interface objects

Information on Control panel and Log panel is updated every time data is loaded **from** the database. The time of the last download from the database is shown in the CVT field.

Periods of data updating are different for Control panel and Log panel:

1. Control panel.
 - a. Data are updated from the database once a minute (by timer).
 - b. At receiving of a command from Data loader to forcibly update information, which can appear after a new load to the database.
2. Log panel. Data are updated from the database once a minute (by timer).

To get the latest database information, click the button  (Refresh data). This forces the data to load.

Data loading to the database

The date of last load of data **to** the database (see section [Moving through the list of alarms](#)) is refreshed when changes in the database appear.

If there is no any change in the database in 5 minutes, the CVT field is forcibly updated and then is updated once a minute. At the same time there will be a gap from the current system time by 5 minutes. After coming of new information from any of the *Agent of Control*, the CVT become equal to the current system time of the computer.

Loading data to the database is performed by the *Data loader for Monitoring* module.

If files with technical information are received from *Agents of Control* (e.g. camera enabled), these files are loaded to the database with a period specified while configuring *Data loader* in the **Loading period** parameter (10 seconds by default). If files with information on alarms are received from *Agents of Control* (e.g. vibration sensor triggered), this information is loaded to the database immediately.

After each load to the database, a message is sent to the **Control panel** interface component to update the information.

If, after receiving files with technical condition, *Server of Control* determines that object state has not changed, then nothing is loaded to the database. This is why the timer is used to forcibly update interfaces (see section [Data loading from database to the interface objects](#)).

In the **Alarm date** field in the interface objects, the time of alarm information load to the database after receiving it from the *Agent of Control* is displayed, not the time of alarm appearing at the site.

Sending data from Agent of Control to Server of Control

Agent of Control sends to *Server of Control* packages with its technical condition with a period set while setting the **Partiti**

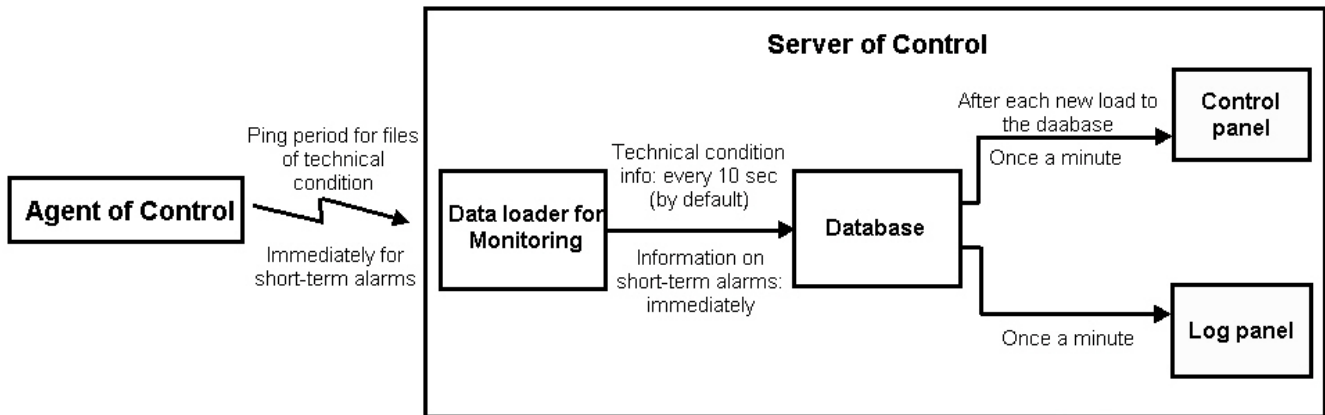
on of Control object at the *Agent of Control* side using the **Ping frequency** parameter (see [Monitoring. Administrator's Guide](#), section [Configuring communication between Agent of Control and Server of Control](#)). The default ping frequency is 2 minutes (120 seconds).

Information on long-term alarms comes to the *Server of Control* from *Agent of Control* together with the information on technical condition, with the ping period.

Information about short-term alarms comes to the *Server of Control* immediately after they have appeared at the *Agent of Control*.

Data transmission scheme

The picture gives a general scheme of data transferring from *Agent of Control* to *Server of Control*.



Features of displaying information on short-term and long-term alarms

Information about long-term alarm can be not recorded into the *Monitoring* database and not displayed in its interfaces in the following cases:

1. If a long-term alarm had started and ended within two polls of *Agent of Control* (within the **Ping frequency** interval, see [Monitoring. Administrator's Guide](#)).
2. If a long-term alarm had started and ended when the connection between *Agent of Control* and *Server of Control* was lost.

When there is no connection with *Server of Control*, the short-term alarms are stored in the "holding" data files on the *Agent of Control*. When connection with *Server of Control* is restored, they are transferred to the *Server of Control*, stored in the *Monitoring* database and displayed in its interfaces.

Agent of Control technical condition data collection periods

Agent of Control technical condition data collection periods are given below:

1. Information on disk failures (the Disk failure alarm type) and its restoring is updated at *Agent of Control* startup and then every 15 minutes.
2. Information on archive size (the Small archive size alarm type) is updated at *Agent of Control* startup and then every 15 minutes.
3. Information on the computer normal and abnormal restarts is displayed in the interface within 5 minutes.
4. Information on free disk space is updated every 1 hour.
5. *Agent of Control* initiates the connection with *Server of Control* and once in a ping period (2 minutes by default) sends a package with technical data to the *Server of Control*. If *Server of Control* haven't been receiving any data from *Agent of Control* for 6 minutes, the "No connection" error is displayed for such object.
6. The Video.run process status (hangup) is checked at startup of Videosrv.exe module and then every 15 minutes, and besides that each time the Videosrv.exe module reconnects with the *Intellect* software, i.e. if the *Intellect* software was shut down and started again.
7. Availability of running processes "Intellect.exe" and "Video.run" is checked every 10 seconds.