



Intellect

Detectomat Integration Module Settings
Guide

1. Introduction into Detectomat Integration Module Settings Guide	3
2. Configuration of the Detectomat integration module	3
2.1 Configuration procedure for the Detectomat integration module	3
2.2 Configure the connection of the Detectomat FSA to the ACFA Intellect software package	3
2.3 Create objects of the Detectomat devices	4
3. Working with the Detectomat integration module	5
3.1 General information about working with the Detectomat integration module	5
3.2 Virtual reset of alarm	5
3.3 Controlling the Detectomat output relay	5

Introduction into Detectomat Integration Module Settings Guide

On the page:

- Purpose of the document
- General information about the Detectomat integration module

Purpose of the document

The *Detectomat integration module settings guide* is a reference manual designed for *Detectomat* Module configuration technicians and operators. This module functions as part of fire and security alarm system which have been built on the *ACFA Intellect* Software System.

This Guide presents the following materials:

1. general information about the *Detectomat* module;
2. *Detectomat* module settings;
3. working with the *Detectomat* module.

General information about the Detectomat integration module

The *Detectomat* integration module is a part of the *FSA* system built on the basis of the *ACFA Intellect* Software System. It is designed to control and manage devices of the *Detectomat* FSA . Configuring the devices of the *Detectomat* FSA in the *ACFA Intellect* software package is impossible.

Before start the working of the *Detectomat* integration module install hardware on the secured object and configure the system in the vendor software.



Note.

Detailed information about *Detectomat* can be found in the official documentation (manufacturer "Detectomat GmbH").

Configuration of the Detectomat integration module

Configuration procedure for the Detectomat integration module

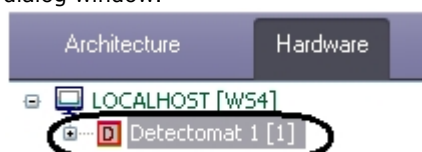
The *Detectomat* integration module is configured as follows:

1. Configure the connection of the *Detectomat* FSA to the *ACFA Intellect* software package.
2. Create objects of *Detectomat* devices.

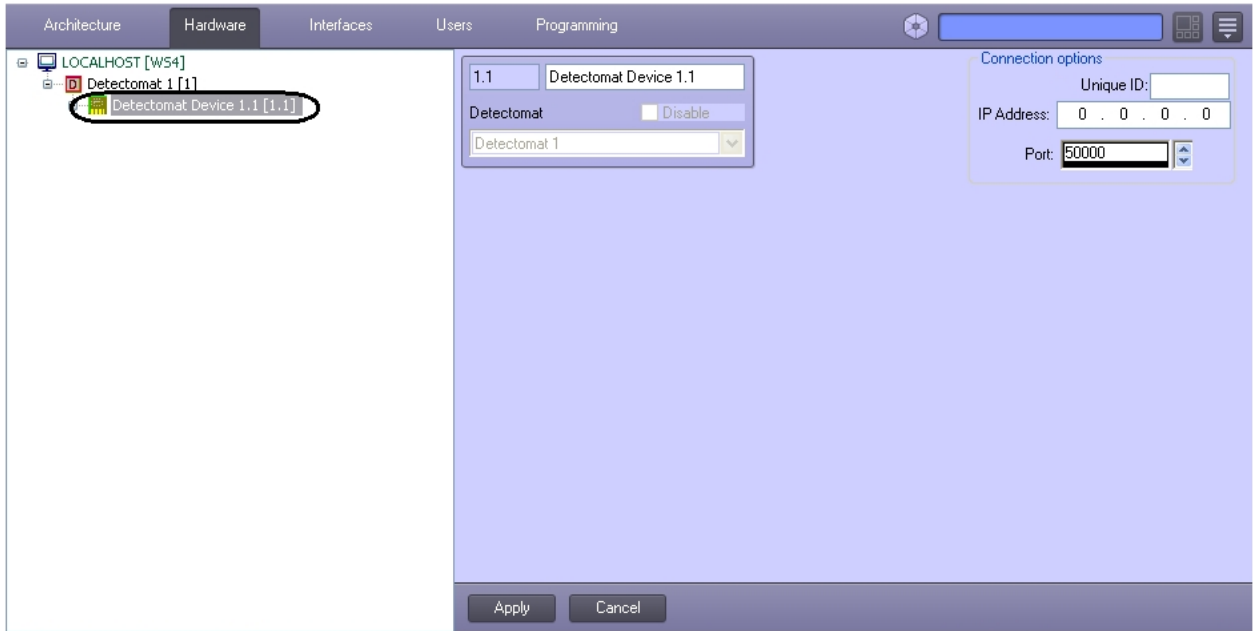
Configure the connection of the Detectomat FSA to the ACFA Intellect software package

To configure the connection of the *Detectomat* FSA to the *ACFA Intellect* software package, do the following:

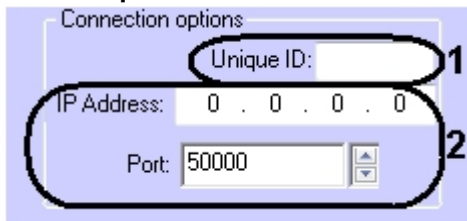
1. Create the **Detectomat** object on the basis of the **Computer** object on the **Hardware** tap of the **System settings** dialog window.



2. Create the **Detectomat Device** object on the basis of the **Detectomat** object.



3. Set the connection parameters on settings panel of the **Detectomat Device** object:
 - a. In the **Unique ID** field enter the controller ID which performs connection to the *ACFA Intellect* Server (**1**).



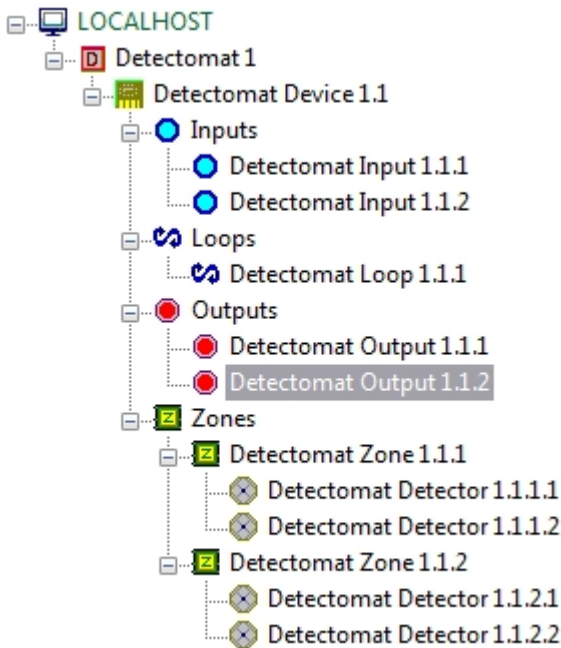
- b. Enter IP-address and port of connection the *Detectomat* controller to the *ACFA Intellect* software package (**2**).
4. Click the **Apply** button.

Configuring the connection of the *Detectomat* FSA to the *ACFA Intellect* software package is completed.

Create objects of the Detectomat devices

The following elements of the *Detectomat* FSA system are available in the *ACFA Intellect* software package: input and output relay (**Detectomat Input** and **Detectomat Output** objects), hardware loops (**Detectomat Loop** object), armed zones (**Detectomat Zone** object) and detectors (**Detectomat Detector** object).

Detectomat Input, **Detectomat Output**, **Detectomat Loop** and **Detectomat Zone** objects are created on the basis of the **Detectomat Device** object, the **Detectomat Detector** object is created on the basis of the **Detectomat Zone** object



Physically detectors are connected and located on the hardware loop. But in the *ACFA Intellect* software package it is required to allocate the **Detectomat Detector** objects by armed zones as it is done in the vendor software.

Working with the Detectomat integration module

General information about working with the Detectomat integration module

The following interface objects are used for working with *Detectomat* integration module:

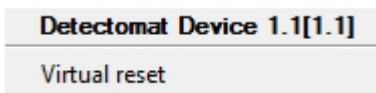
1. **Map;**
2. **Events protocol.**

Information about **Map** and **Events protocol** interface objects' configuration is given in the [Intellect Software Package: Administrator's Guide](#).

Working with these interface objects is given in details in [Intellect Software Package: Operator's Guide](#).

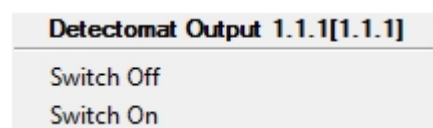
Virtual reset of alarm

In the *ACFA Intellect* software package it is possible to perform virtual reset of alarm from the **Detectomat** devices, at this, alarm can stay on devices in fact. To perform it, select the **Virtual reset** item in the feature menu of the **Detectomat Device** object in the **Map** interactive window.



Controlling the Detectomat output relay

Controlling *the Detectomat* output relay is carried out in **Map** interactive window using feature menu of **Detectomat Output** object.



Control the Detectomat output relay:

Menu command	Performed function
--------------	--------------------

Switch Off	Disable relay
Switch On	Enable relay