



Intellect

Gate Integration Module Setup and User
Guide

1. Gate Integration Module Setup and User Guide	3
1.1 List of Terms Used in Gate Integration Module Setup and User Guide	3
1.2 Introduction into Gate Integration Module Setup and User Guide	3
1.3 Supported hardware and licensing of the Gate integration module	3
1.4 Configuring the Gate Integration Module	4
1.4.1 Steps to Configure the Gate Integration Module	4
1.4.2 Configuring the Gate ACS's Connection	4
1.4.3 Automatically creating the Gate object tree	6
1.4.4 Forwarding the Gate ACS's configuration to the controllers	6
1.4.5 Configure the Gate controller	7
1.4.5.1 Managing the configuration of a Gate controller	8
1.4.5.2 Configure the connection of Gate controller	8
1.4.5.3 Configuring the Gate controller parameters	9
1.4.5.4 Configuring Gate access modes	11
1.4.5.5 Configuring Gate reactions	11
1.4.5.6 Specifics of users access levels settings	12
1.5 Working with the Gate Integration Module	13
1.5.1 General Information on Working with the Gate Integration Module	13
1.5.2 Managing Gate controller	13
1.6 Appendix 1. Automatic updating the Flash memory of Gate controller	14
1.6.1 General information on automatic updating the Flash memory of Gate controller	14
1.6.2 Example of program for automatic updating the Flash memory of Gate controller	14
1.7 Appendix 2. Resetting antipassback (APB) parameters for a given user	14

Gate Integration Module Setup and User Guide

List of Terms Used in Gate Integration Module Setup and User Guide

Access Control System (ACS): a hardware and software suite for access control and management.

Integrated system *ACS Gate*: a system, which integrates hardware and software. The system is used to manage access, to record and to keep track of vehicle movements, and to manage actuators at exit/entry points of stay. The system supports permanent and temporary passes and the access approval mode.

Intellect Server: a computer that has the **Server** installation version of the *Intellect* software package installed.

Controller: the main hardware device in the *Gate ACS*. This device enables receiving and processing the information signals that come from card readers, managing external actuators (for example, locks) by using built-in relays, and controlling security zones.

Time schedule - a set of any number of time intervals during a day (24 hours) defined for several days (1 to 366), and the time intervals during specific dates. Time schedule defines a schedule of access to the secured object.

Introduction into Gate Integration Module Setup and User Guide

On the page:

- [Purpose of the Document](#)
- [General Information on the Gate Integration Module](#)

Purpose of the Document

The *Setup and User Guide for the Gate Integration Module* is a reference guide for administrators and operators of the *Gate* module. This module is part of access control systems (ACS) implemented based on the *ACFA Intellect* software package.

This Guide contains:

1. general information on the *Gate* integration module;
2. guidance on how to configure the *Gate* integration module;
3. guidance on how to work with the *Gate* integration module.

General Information on the Gate Integration Module

The *Gate* integration module is part of ACS systems based on *ACFA Intellect*. The module is used for:

1. configuring the *Gate ACS* (manufactured by Ravelin-LTD);
2. enabling interaction between the *Gate ACS* and *ACFA Intellect* (monitoring and management).



Note:

Detailed information on the *Gate ACS* can be found in the vendor documentation.

Before configuring the *Gate* integration module:

1. Install the *Gate ACS* hardware at the secure facility (refer to the *ACS Gate* reference documentation).
2. Connect the *Gate ACS* to the Server.

Supported hardware and licensing of the Gate integration module

Manufacturer	Ravelin Ltd. 197022, St.-Petersburg, Professor Popov's str., bld. 4 Tel: +7 (812) 327-50-32 E-mail: ravelin@ravelinspb.ru
Integration type	Low-level protocol

Equipment connection	RS-232, USB, Ethernet
-----------------------------	-----------------------

Supported equipment

Equipment	Function	Features
Gate-4000 (all modifications)	Access controller	Connected readers: 2 Relay: 2 Max. capacity of key memory bank: 4072 Max. capacity of events memory bank: 4095 Max. number of controllers in network: 254 Max. time of key recognition 0,8s (for 4000 keys) RS-485/RS-422 interface
Gate-8000 (all modifications)	Access controller	Connected readers: 2 Relay: 2 Max. capacity of key memory bank: 8000 Max. capacity of events memory bank: 8000 Max. number of controllers in network: 254 Max. time of key recognition 0,8s (for 4000 keys) RS-485/RS-422 interface
Gate-4000 Parking	Access controller	Connected readers: 2 Relay: 2 Max. capacity of key memory bank: 4072 Max. capacity of events memory bank: 4095 Max. number of controllers in network: 254 Max. time of key recognition 0,8s (for 4000 keys) RS-485/RS-422 interface
Gate-8000-Ethernet	Access controller	Connected readers: 2 Relay: 2 Max. capacity of key memory bank: <ul style="list-style-type: none"> • two-door mode: 8167 • one-door, turnstile and gate mode: 16334 Max. capacity of events memory bank: 8192 Max. time of key recognition 0,6s (for 8000 keys) Interface of connected readers: Wiegand, 1-Wire (TM), ABA-2 Type of connection: Ethernet

Protection

For 1 controller.

Configuring the Gate Integration Module

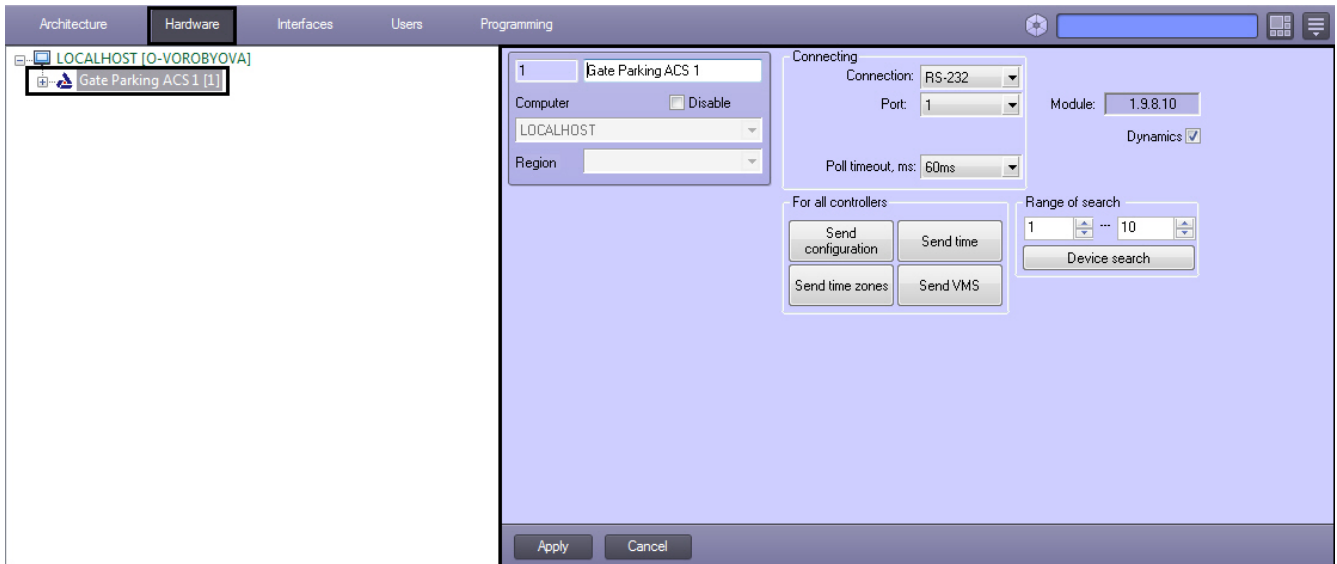
Steps to Configure the Gate Integration Module

To configure the *Gate* integration module:

1. configure the *Gate ACS's* connection to the *Intellect Server*;
2. automatically create the object tree;
3. forward the *Gate ACS's* configuration to the controllers;
4. configure the *Gate* controllers;
5. set the access modes;
6. configure the automatic reactions of *Gate* controllers.

Configuring the Gate ACS's Connection

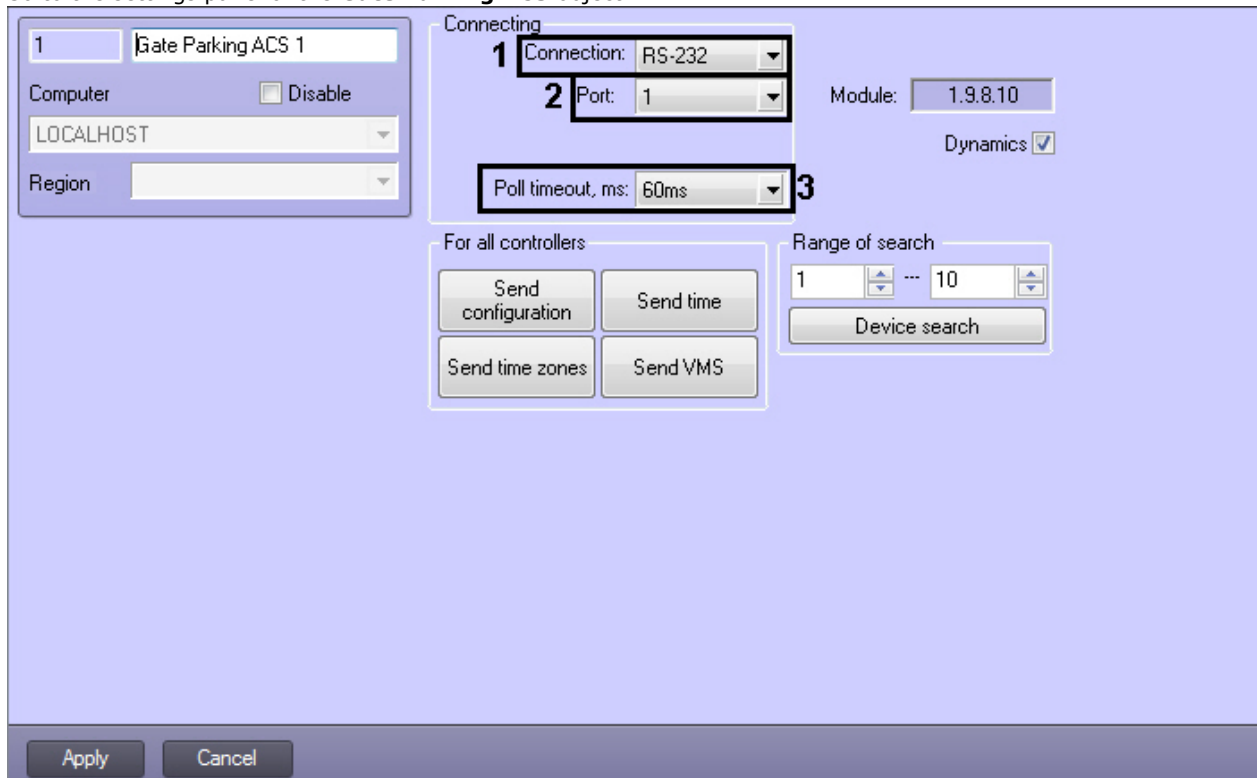
To configure the *Gate ACS's* connection, use the relevant **Gate Parking ACS** object. To create this object, go to the **Settings** dialog box, click the **Hardware** tab, and select the parent **Computer** object.



Note. The **Module:** field shows the current version of the *Gate* integration module.

To configure the *Gate* integration module's connection:

1. Go to the settings panel of the **Gate Parking ACS** object.



2. From the **Connection:** drop-down list select the connection type of the *Gate ACS* and *Intellect Server* (1).
3. From the **Port:** drop-down list select the number of the COM port to connect to *Gate ACS* (2).

Note. If the *Ethernet* connection type is selected it's required to specify the corresponding IP-address and number of port by which events will be received.



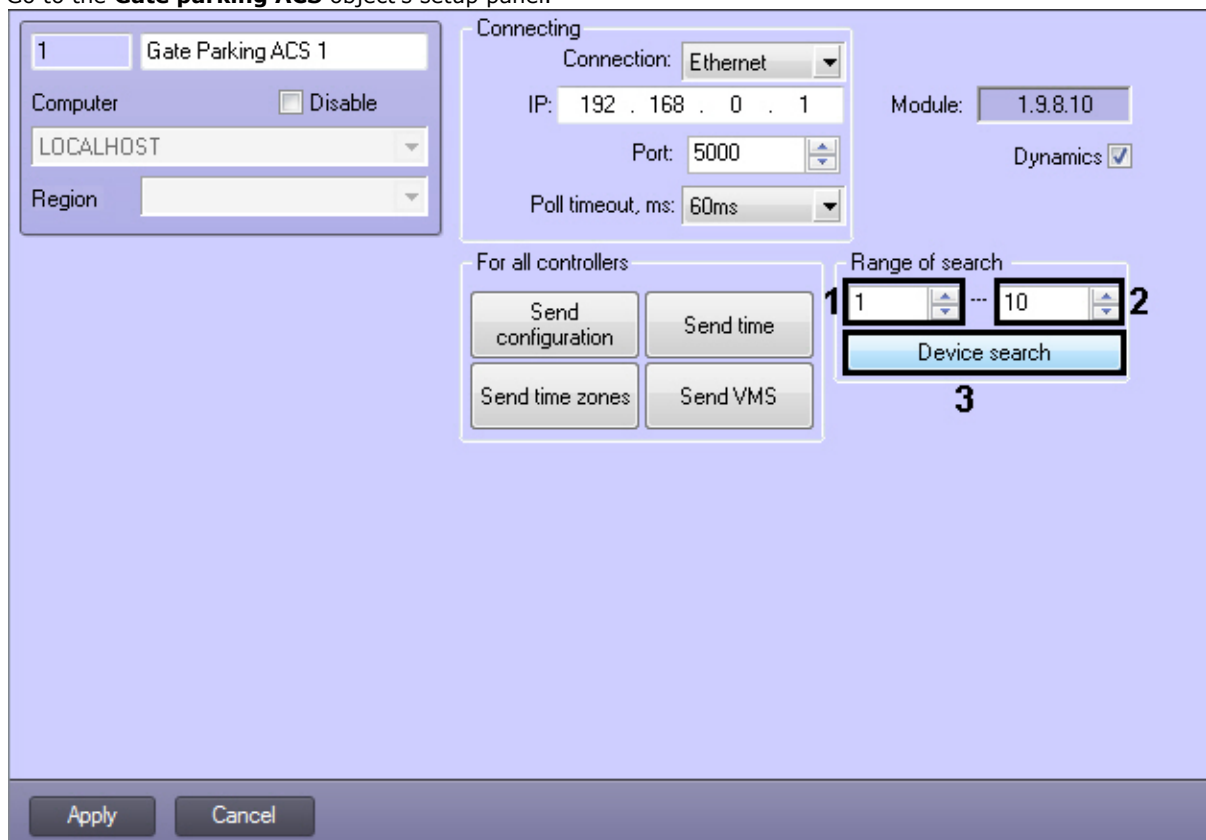
4. From the **Poll timeout, ms:** drop-down list select the time period in milliseconds between two consecutive polls of the device connection (3).
5. Click **Apply**.

The *Gate ACS*'s connection is now configured.

Automatically creating the Gate object tree

To automatically create the object tree, do the following::

1. Go to the **Gate parking ACS** object's setup panel.



2. Enter the controller's address range: in the **from** field, enter the first address in the range (1); in the **to** field, enter the last address (2).
3. Click **Device search** (3).

This launches an automatic search for hardware-configured and connected *Gate* controllers. Objects corresponding to found controllers are automatically created in the object tree under the relevant *Gate ACS* object.

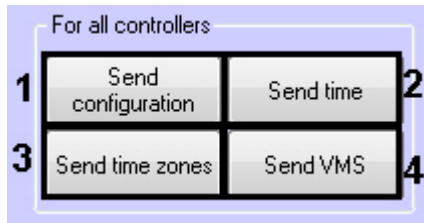
The *Gate ACS*'s object tree is now created.

Forwarding the Gate ACS's configuration to the controllers

Forwarding the configuration to all *Gate* controllers is described in this section. Also it is possible to forward the configuration to each controller separately (see the [Managing the configuration of a Gate controller](#) section).

To forward the *Gate ACS*'s configuration, do the following:

1. Go to the **For all controllers** group in the **Gate Parking ACS** object's setup panel.



2. To forward the *Gate ACS's* configuration to all the controllers, click **Send configuration** button (1).

Note:
This records the following in each controller's internal memory:

- a. the time zones;
- b. the data on the system's users;
- c. the user access levels.

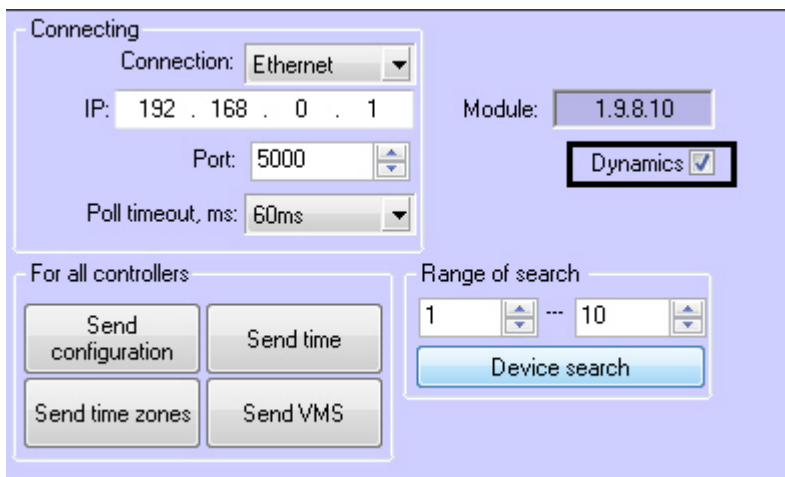
3. To synchronize the time of all the controllers with the Server time, click **Send time** button (2).

4. To forward time zones to all controllers click **Send time zones** button (3).

5. To forward data of the *Visitor Management System* module (users, access levels, time zones, etc.) click the **Send VMS** button (4).

Forwarding of the *Gate* configuration is completed.

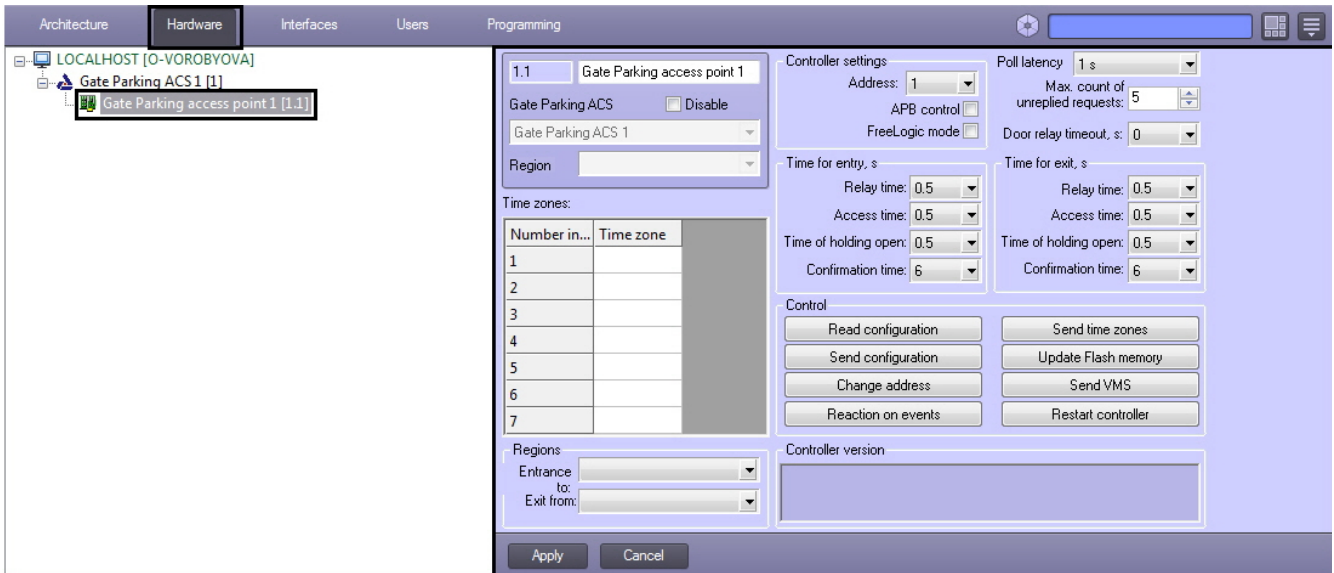
For automatically forwarding data of the *Visitor Management System* module to controller set the **Dynamics** checkbox and click the **Apply** button.



Attention!
Dynamic sending of time zones and users are only supported. Dynamic sending of user access levels is not supported due to device characteristics.

Configure the Gate controller

Settings of the *Gate* controllers is performed on the **Gate Parking access point object's** settings panel created on basis of the **Gate Parking** object on the **Hardware** tab of the **System Settings** dialog box.



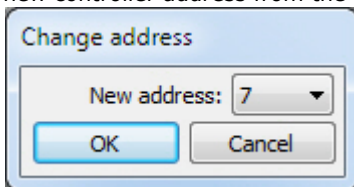
Managing the configuration of a Gate controller

For a *Gate* controller, configuration management includes the following actions:

1. Reading configuration of the *Gate* controller. To perform this action click the **Read configuration** button (1). To view the read configuration select the **Gate parking access point** object again



2. Forwarding configuration to the *Gate* controller. Click the **Send configuration** button to perform the forwarding (2).
3. Changing of the *Gate* controller address. Click the **Change address** button to perform the changing (3). Select the new controller address from the drop-down list in the opened window.



4. Forwarding time zones to the *Gate* controller. Click the **Send time zones** button to perform forwarding of time zones (4).
5. Updating the *Gate* controller's memory. To update the memory, click **Update Flash memory** (5).
6. Forwarding data of the Visitor management System (users, access level, time zones, etc.). Click the **Send VMS** button to perform this action (6).



Attention!

Update the controller memory once per day. Use the ACFA Intellect's program or script for automatic memory update (see [Appendix 1. Automatic updating the Flash memory of Gate controller](#) section).

7. Restarting the controller. To restart the controller, click **Restart controller** (7).

Configure the connection of Gate controller

To configure the connection of a *Gate* controller, do the following:

1. Go to the settings panel of the relevant **Gate parking access point** object.

2. From the **Address** drop-down list select the controller address (**1**).
3. Click **Apply**.



Note:

If the controller with specified address is connected to the Intellect Server, you will see the following controller parameters in the **Controller version** group (**2**):

- a. controller version;
- b. controller firmware version;
- c. controller operation mode.

If the controller parameters are not shown, check the controller's connection to the computer (refer to the Gate ACS vendor documentation).

The *Gate* controller is now configured.

Configuring the Gate controller parameters

To configure the Gate controller, do the following:

1. Go to the **Gate Parking access point** object's settings panel.

The screenshot shows a configuration window for a controller. The interface includes several sections:

- Gate Parking access point 1:** Contains fields for 'Gate Parking ACS' (with a 'Disable' checkbox), 'Gate Parking ACS 1' (dropdown), and 'Region' (dropdown).
- Controller settings:** Includes 'Address: 1' (dropdown), 'APB control' (checkbox, labeled 4), and 'FreeLogic mode' (checkbox, labeled 5).
- Time zones:** A table with columns 'Number in controller' and 'Time zone'.

Number in controller	Time zone
1	Time Zone 1
2	Time Zone 2
3	
4	
5	
6	
7	
- Regions:** A table with columns 'Entrance to:' and 'Exit from:'.

Entrance to:	Exit from:
1	Region 1.1
2	Region 1.2
- Lock parameters:** Two columns of settings for 'Time for entry, s' and 'Time for exit, s'. Each column has dropdowns for 'Relay time: 0.5', 'Access time: 0.5', 'Time of holding open: 0.5', and 'Confirmation time: 6'. The 'Confirmation time' dropdowns are labeled 8.
- Control:** A set of buttons: 'Read configuration', 'Send configuration', 'Change address', 'Reaction on events', 'Send time zones', 'Update Flash memory', 'Send VMS', and 'Restart controller'.
- Controller version:** A text field.
- Buttons:** 'Apply' and 'Cancel' at the bottom.

Numbered callouts in the image point to: 1 (Entrance to: dropdown), 2 (Exit from: dropdown), 3 (Poll latency dropdown), 4 (APB control checkbox), 5 (FreeLogic mode checkbox), 6 (Max. count of unreplied requests dropdown), 7 (Door relay timeout dropdown), and 8 (Relay time, Access time, Time of holding open, and Confirmation time dropdowns).

2. From the **Entrance to:** drop-down list select the **Region** object corresponding to the area located in the site of exit through the reader (1).
3. From the **Exit from:** drop-down list select the **Region** object corresponding to the area located on the site of entry through the reader (2).
4. From the **Poll latency:** drop-down list select the controller poll latency (3).
5. Set the **APB control** checkbox to activate the antipassback (4).

Note. Antipassback parameters can be reset for any user (see [Appendix 2. Resetting antipassback \(APB\) parameters for a given user](#)).

6. Set the **FreeLogic mode** checkbox to activate the reactions mode on which the controller can enable and disable exits when some specified events appear inside of controller (5).
7. Specify maximal number of unreplied requests (6). Connection with controller will be lost while exceeding this number.
8. From the **Door relay timeout** drop-down list select time interval in seconds between access card presenting and opening of door relay (7).
9. Configure the lock parameters for passes on entry and exit (8):
 - a. From the **Relay time:** drop-down list select the time period in seconds during which the lock will be opened.

Attention! If the relay time equal to 0 the lock is failed to open by available ways: using the key, button or corresponding command.

- b. From the **Access time:** drop-down list select the time period in seconds during which the user can open the door.

Note. Access time and relay time start to count off from the moment of relay triggering (i.e. lock opening), so the access time can't be less than relay time.

- c. From the **Time of holding open:** drop-down list select the time period in seconds after door opening during which the door is to be closed.

Note. If the door will not be closed after time of holding open expire then the Door not closed events is fixed. It is followed by signal and light indication till the door will be closed.

- d. From the **Confirmation time:** drop-down list select the time period in seconds during which access is to be confirmed by card (see [Configuring Gate access modes](#) section).

**Attention!**

If the confirmation time is 0 the confirmation timeout is not limited.

- Configure time zones in case of users have access level with time zone different from Always and Never. For each time zone of Gate controller select the time zone of the *ACFA Intellect* software from the corresponding drop-down list.

Time zones:	
1	Time Zone 1
2	Time Zone 2
3	Time Zone 3
4	
5	
6	
7	

- Click the **Apply** button.

Configuring parameters of the *Gate* controller is completed.

Configuring Gate access modes

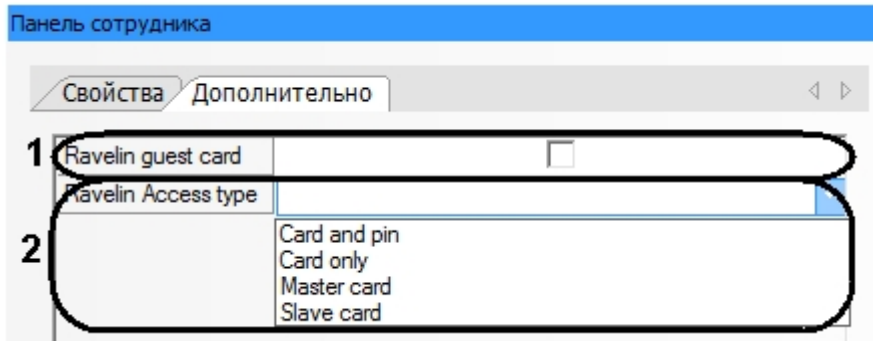
The *Gate ACS* supports four operation modes of user access card.

Card operation mode	Description
Card only	Only card is sufficient for access
Card and pin	Card is to be confirmed by PIN-code for access
Master	Only card is sufficient for access + it is confirmation card for access card of Slave type
Slave	Card is to be confirmed by confirmation card (Master type)

Set one or more of specified modes to users to configure the access modes.

To configure the access modes of users, do the following:

- Go to the user panel of the *Visitor Management System* module (see the *Visitor Management System Module Settings and Operation Guide*).



- From the **Ravelin Access type** drop-down list select the user access mode (2). If the mode is not selected the access will be granted according to the access level.
- Set the **Ravelin guest card** checkbox to define some user as guest (1).
- Click the **Save** button.
- To configure access modes for all users repeat steps 1-3 for each of them.
- If the dynamic forwarding the controller configuration is set the access modes will be enabled immediately. Otherwise forward the data of the *Visitor Management System* module to the *Gate* controller (see *Managing the configuration of a Gate controller* section).

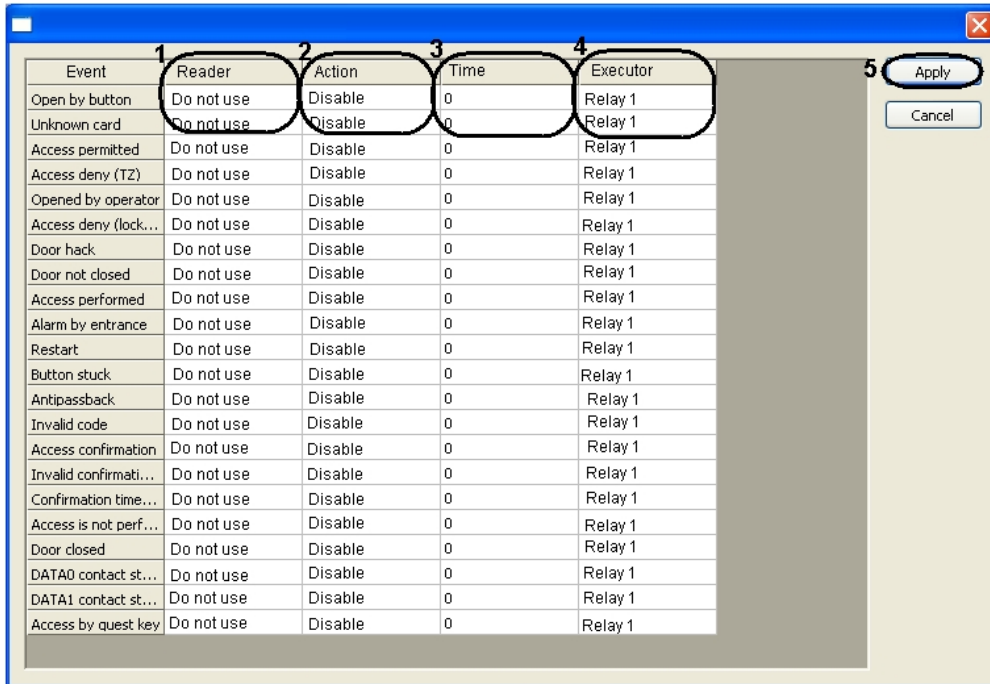
Configuring of access modes is completed.

Configuring Gate reactions

It is possible to enable or disable (permanently or on time from 1 to 255 seconds) one from eight controlled exits when some event is received if the reaction mode is activated in the system. Some executive or warning device can be connected to this exit.

To configure reactions, do the following:

- Go to the **Gate parking access point** object's settings panel and click the **Reaction on events** button.



- The list of events for which reactions can be configured is presented in the relevant column. To set reaction on the event, do the following:
- From the corresponding list select reader on which the event is to be performed (1).



Note.

Reader 1 – reader on entry, Reader 2 – reader on exit.

- Select the performed action (2).
- Set the action performing time in the range from 1 to 255 seconds in the **Time** column (3).
- Select the exit which is to be enabled or disabled in the **Executor** column (4).
- Click the **Apply** button (5).
- Click the **Apply** button on the **Gate Parking** access point object's settings panel.
- Forward configuration to the controller (see the *Managing the configuration of a Gate controller* section).

Configuring of reactions is completed.

Specifics of users access levels settings

It is possible to restrict access level of the *Gate* users for providing access only through one reader of controller.

Switch over controller to **Two-door pass** (it is set by connecting straps, see documentation for controller) and configure time zones in such a way as to the first interval referred to the first reader and the second interval referred to the second reader.

For example, to grant access only by the first reader to employee which have the **Access level for entry** and grant access only by the second reader to employee which have the **Access level for exit**, make the following settings in the Visitor Management System module (see *Creation of a time zone*, *Creation of an access level* sections):

Time schedule bar

Num... 4 Name Time zone for entry

	Start	Ending	Monday	Tuesday	Wednesday	Thursday	Friday	Saturday	Sunday	Holidays
▶	9:00:00	18:00:00	<input checked="" type="checkbox"/>	<input checked="" type="checkbox"/>	<input checked="" type="checkbox"/>	<input checked="" type="checkbox"/>	<input checked="" type="checkbox"/>	<input checked="" type="checkbox"/>	<input type="checkbox"/>	<input type="checkbox"/>
	0:00:00	0:00:00	<input type="checkbox"/>	<input type="checkbox"/>	<input type="checkbox"/>	<input type="checkbox"/>	<input type="checkbox"/>	<input type="checkbox"/>	<input type="checkbox"/>	<input type="checkbox"/>
*			<input type="checkbox"/>	<input type="checkbox"/>	<input type="checkbox"/>	<input type="checkbox"/>	<input type="checkbox"/>	<input type="checkbox"/>	<input type="checkbox"/>	<input type="checkbox"/>

Save New Delete

Access level bar

Num... 3 Name Access level for entry

Access point	Time schedule	Card transfer	Arm	Disarm
▶ Gate Parking access point 1 ▾	Time zone for entry	<input checked="" type="checkbox"/>	<input type="checkbox"/>	<input type="checkbox"/>
*		<input type="checkbox"/>	<input type="checkbox"/>	<input type="checkbox"/>

Save New Delete

Time schedule bar

Num... 5 Name Time zone for exit

Start	Ending	Monday	Tuesday	Wednesday	Thursday	Friday	Saturday	Sunday	Holidays
▶ 0:00:00	0:00:00	<input type="checkbox"/>	<input type="checkbox"/>	<input type="checkbox"/>	<input type="checkbox"/>	<input type="checkbox"/>	<input type="checkbox"/>	<input type="checkbox"/>	<input type="checkbox"/>
9:00:00	18:00:00	<input checked="" type="checkbox"/>	<input checked="" type="checkbox"/>	<input checked="" type="checkbox"/>	<input checked="" type="checkbox"/>	<input checked="" type="checkbox"/>	<input checked="" type="checkbox"/>	<input type="checkbox"/>	<input type="checkbox"/>
*		<input type="checkbox"/>	<input type="checkbox"/>	<input type="checkbox"/>	<input type="checkbox"/>	<input type="checkbox"/>	<input type="checkbox"/>	<input type="checkbox"/>	<input type="checkbox"/>

Save New Delete

Access level bar

Num... 4 Name Access level for exit

Access point	Time schedule	Card transfer	Arm	Disarm
▶ Gate Parking access point 1 ▾	Time zone for exit	<input checked="" type="checkbox"/>	<input type="checkbox"/>	<input type="checkbox"/>
*		<input type="checkbox"/>	<input type="checkbox"/>	<input type="checkbox"/>

Save New Delete

Working with the Gate Integration Module

General Information on Working with the Gate Integration Module

To work with the *Gate* integration module, use the following interface objects:

1. **Map**;
2. **Event log**.

The information on how to configure these interface objects can be found in [Intellect Software package: Administrator's Guide](#).

Information on how to work with these interface objects can be found in [Intellect Software package: Operator's Guide](#).

Managing Gate controller

To manage a *Gate* controller, go to the **Map** window and use the menu of the relevant **Gate Parking controller** object.

Gate Parking access point 1[1.1]
Emergency mode
Close entrance
Close exit
Open entrance
System mode
Open exit

Gate Parking controller menu functions are given in the table.

Menu item	Executed function
System mode	Switches the <i>Gate</i> controller to system (main) mode
Emergency mode	Switches the <i>Gate</i> controller to emergency mode
Close entrance	Close the opened entrance
Close exit	Close the opened exit
Open entrance	Open entrance for Relay time
Open exit	Open exit for Relay time

Appendix 1. Automatic updating the Flash memory of Gate controller

General information on automatic updating the Flash memory of Gate controller

Automatic updating the Flash memory of *Gate* controller can be performed using the programming functional of *ACFA Intellect* software:

1. programs in the embedded programming language of *ACFA Intellect* software;
2. script in the JavaScript language.

Detailed information on how to write programs and skripts in *ACFA Intellect* software is given in INTELLECT Software Package: Programming Guide (not available in English) and INTELLECT Software Package: Programming Guide (Jscript) documents.

Example of program for automatic updating the Flash memory of Gate controller

For automatic updating the Flash memory of *Gate* controller use the following program:

```
OnTime (W,D,X,Y,"00","00","10")
{
// program will function every day at 00 hours 00 minutes and 10 seconds
DoReact("RAVELIN_SINGLE","1.1","UPDATE_FLASH");
//The Flash memory update in the Gate controller with the «1.1» ID
}
```

Appendix 2. Resetting antipassback (APB) parameters for a given user

Resetting antipassback (APB) parameters for a given user is performed using a script sending simulated entrance/exit commands to the Gate controller:

1. emulation of entrance (i.e. user entering the "In" region): the **SIMULATE_ENTER** command of the **RAVELIN_SIN**

- GLE** access point object. The **person_id** parameter is to contain user **id** in the Intellect software.
- emulation of exit (i.e. user entering the "Out" region): the **SIMULATE_EXIT** command of the same object with the same parameter.
These commands can only be executed for a single-door controller or a turngate.

Example:

```
// generating entrance
if(Event.SourceType == "MACRO" && Event.SourceId == "1" && Event.Action == "RUN") {
DoReactStr("RAVELIN_SINGLE","1.1","SIMULATE_ENTER","person_id<1>");
}
// generating exit
if(Event.SourceType == "MACRO" && Event.SourceId == "2" && Event.Action == "RUN") {
DoReactStr("RAVELIN_SINGLE","1.1","SIMULATE_EXIT","person_id<1>");
}
```