



Intellect

Impro Integration Module Settings Guide

1. Introduction into Impro Integration Module Settings Guide	3
2. Configuration of the Impro integration module	3
2.1 Procedure for configuring of Impro integration module	3
2.2 Configuration of Impro ACS connection to ACFA Intellect software package	3
2.3 Configure the Impro controller	4
2.4 Configure the Impro zone	5
2.5 Configure the Impro access point	6
2.6 Configure the Impro terminal	7
2.7 Configure the Impro input and output	8
3. Working with the Impro integration module	9

Introduction into Impro Integration Module Settings Guide

On the page:

- Purpose of the document
- General information about the Impro integration module

Purpose of the document

This *Impro Module Settings Guide* is a reference manual designed for *Impro* Module configuration technicians. This module is part of an access control system (ACS) built on the *ACFA Intellect* Software System.

This Guide presents the following materials:

1. general information about the *Impro* integration module;
2. configuration of the *Impro* integration module;
3. working with the *Impro* integration module.

General information about the Impro integration module

The *Impro* module is a component of an ACS built on the *ACFA Intellect* Software System. It was designed to perform the following functions:

1. Configuration of the *Impro* ACS (manufactured by Impro Technologies);
2. Interaction between the *Impro* ACS and the *ACFA Intellect* Software System (monitoring).



Note:

Detailed information about the *Impro* ACS is presented in the official documentation for that system.

Before configuring the *Impro* Module, the following actions must be performed:

1. Install the *Impro* ACS hardware on the protected territory (see the *Impro* reference documentation).
2. Configure the *Impro* ACS in vendor's software (see the official reference documentation).
3. Connect the *Impro* ACS to the Server.

Configuration of the Impro integration module

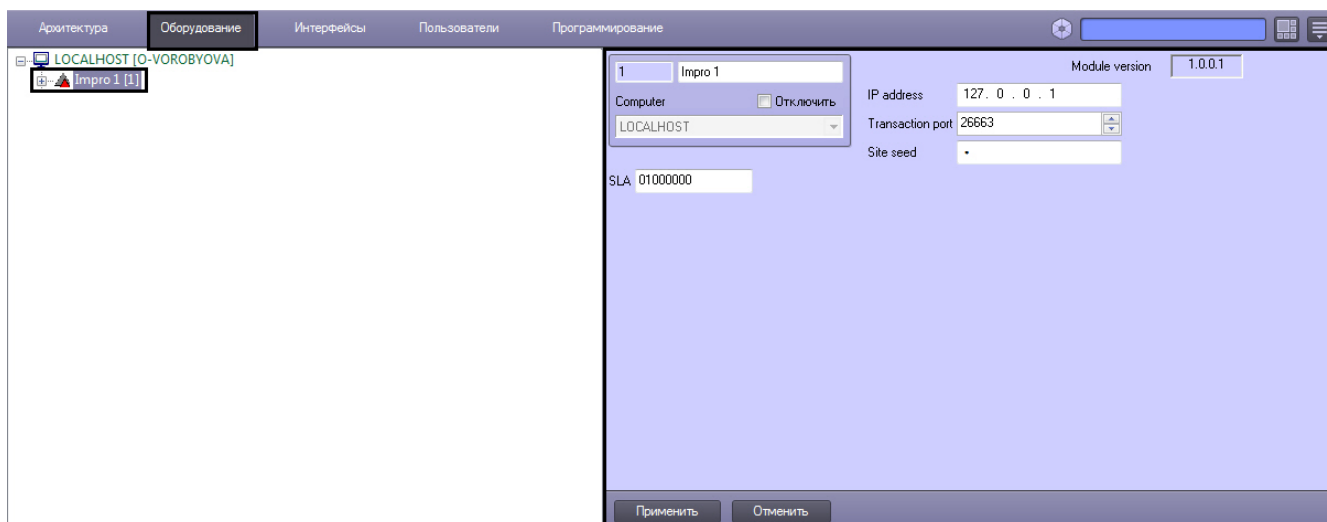
Procedure for configuring of Impro integration module

The *Impro* integration module is configured through the following steps:

1. Configuration of *Impro* ACS in vendor software.
2. Configuration of *Impro* ACS connection to *ACFA Intellect* software package.
3. Configure the *Impro* controller.
4. Configure the *Impro* security zone.
5. Configure the *Impro* access point.
6. Configure the *Impro* terminal.
7. Configure the *Impro* input and output.

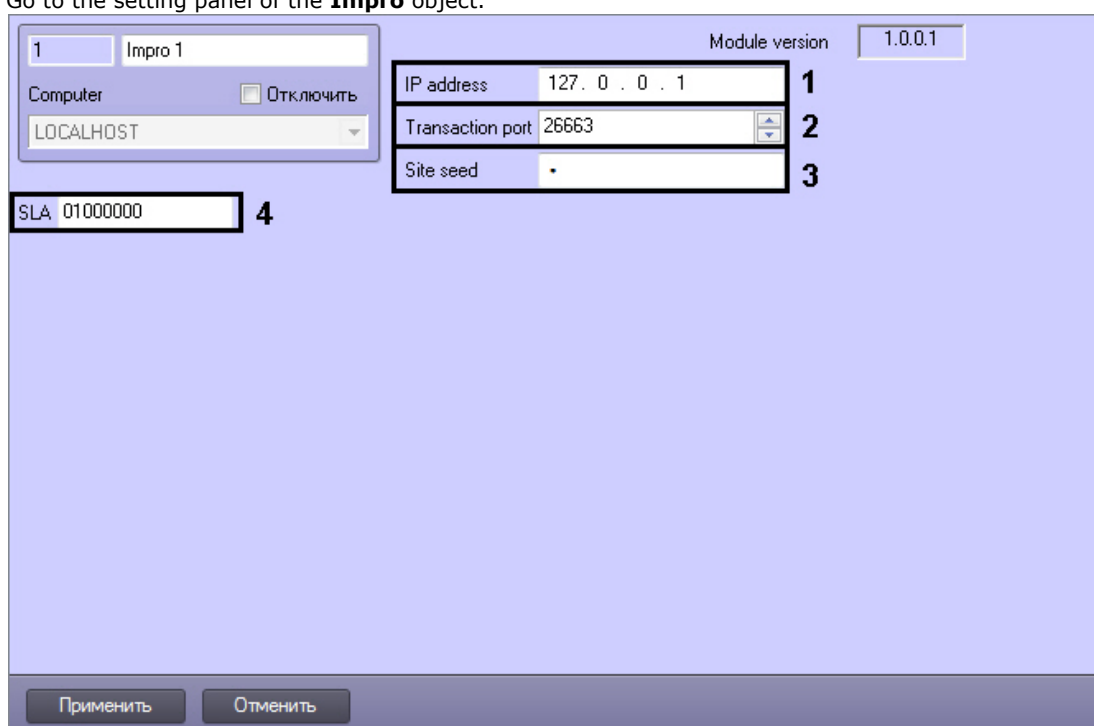
Configuration of Impro ACS connection to ACFA Intellect software package

Configuration of the *Impro* ACS connection to *ACFA Intellect* software package is performed on the setting panel of the **Impro** object. This object is created on the basis of the **Computer** object on the **Hardware** tab of the **System settings** dialog box.



To configure the connection of *Impro ACS* to *ACFA Intellect* software package do the following:

1. Go to the setting panel of the **Impro** object.



2. In the **IP address** field set the IP address of computer on which *Impro ACS* software is installed (**1**).
3. In the **Transaction port** field set the port of *Impro* integration module connection to *Impro ACS* software (**2**).
4. In the **Site seed** field set the password of *Impro* integration module connection to *Impro ACS* software (**3**).
5. In the **SLA** field enter the logical address of the secured site (**4**).



Note.

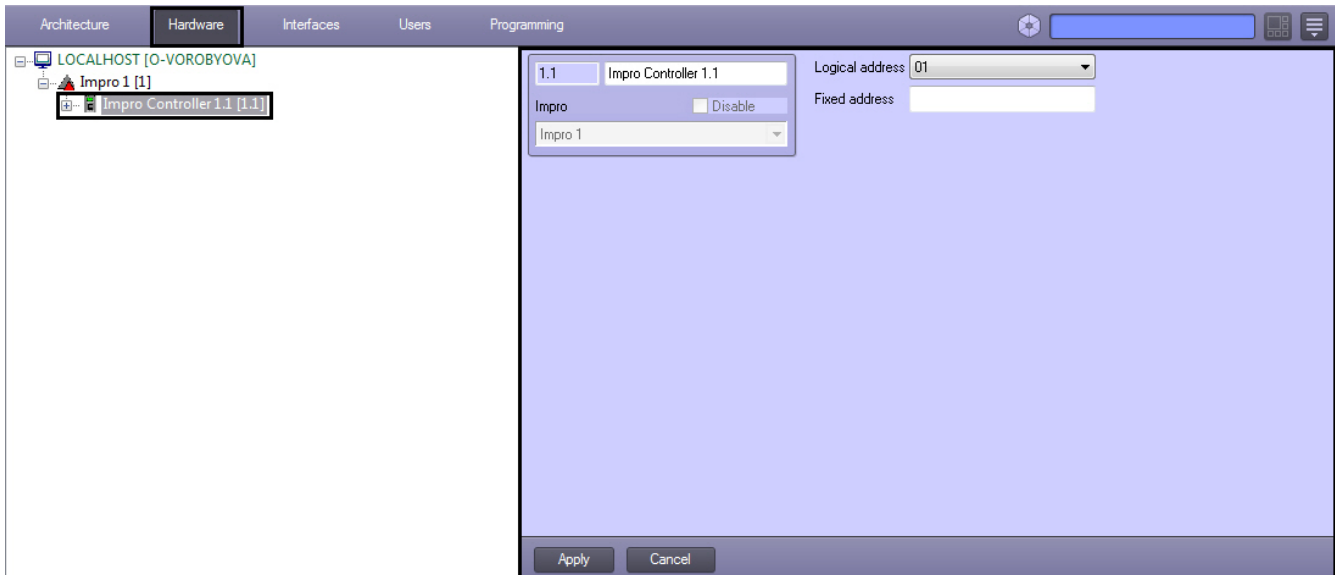
Site logical address and siteseed are specified in the *Impro ACS* software.

6. To save changes click **Apply**.

Configuration of *Impro ACS* connection to *ACFA Intellect* software package is completed.

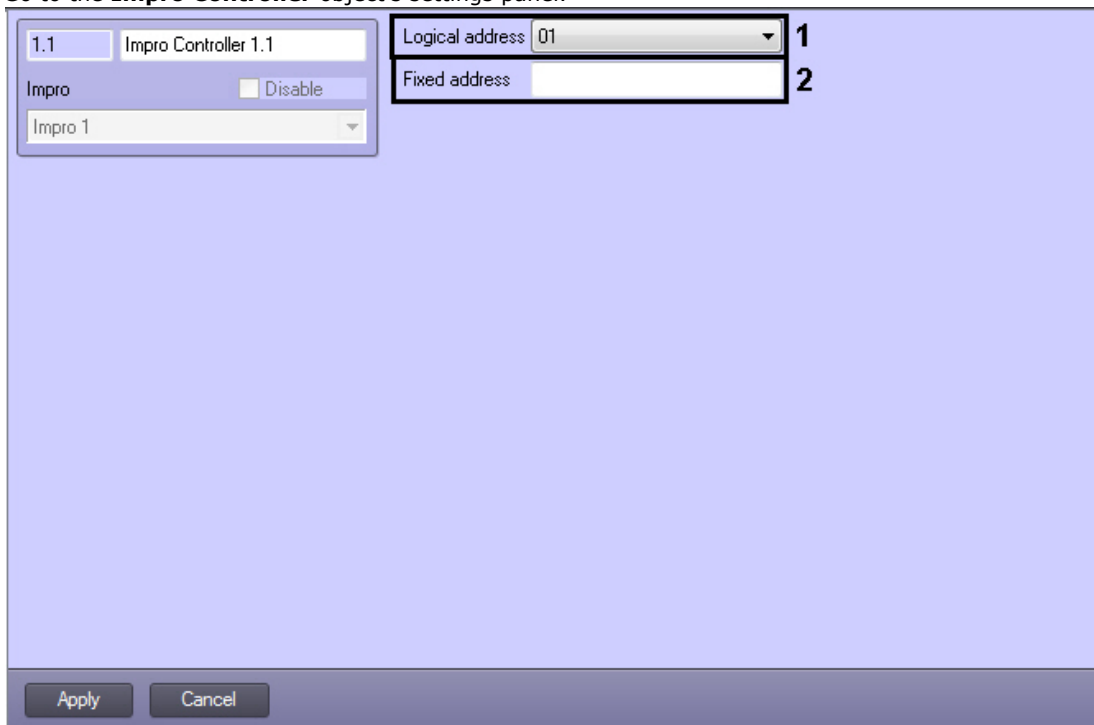
Configure the Impro controller

The controller is configured on the **Impro Controller** object's settings panel. This object is created based on a **Impro** object on the **Hardware** tab of the **System Settings** dialog window.



To configure the controller do the following:

1. Go to the **Impro Controller** object's settings panel.

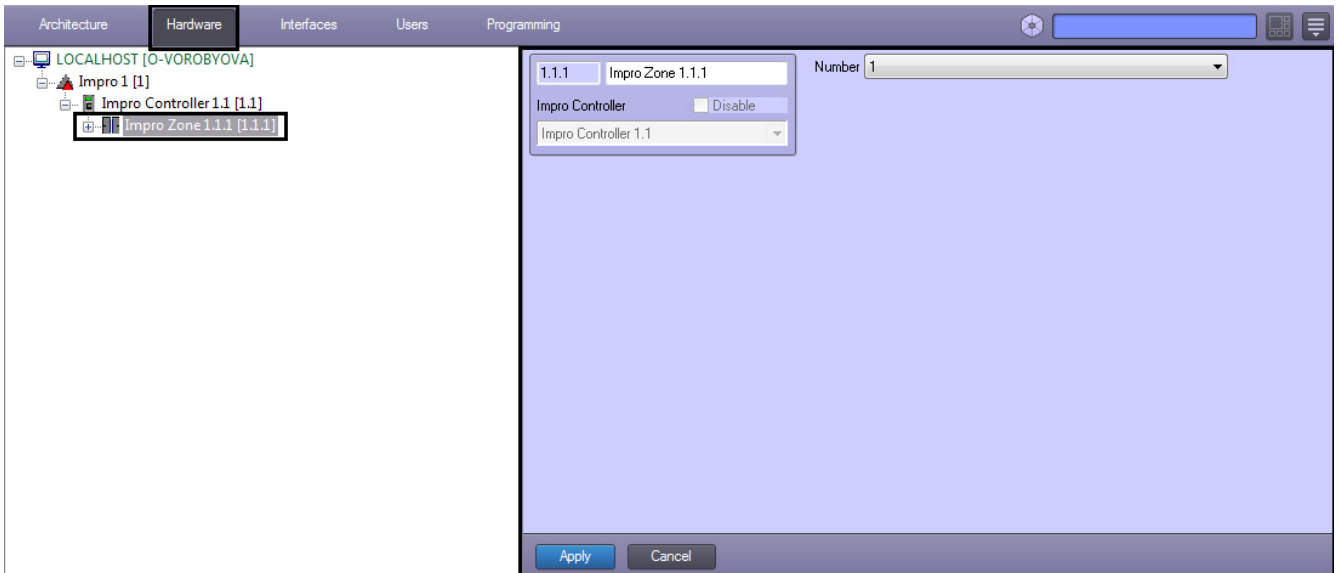


2. From the **Logical address** drop-down list select the controller logical address specified while hardware configuring in the vendor's software (**1**).
3. In the **Fixed address** enter the controller address for its identification (**2**).
4. To save changes click **Apply** (**3**).

Configuring of the *Impro* controller is completed.

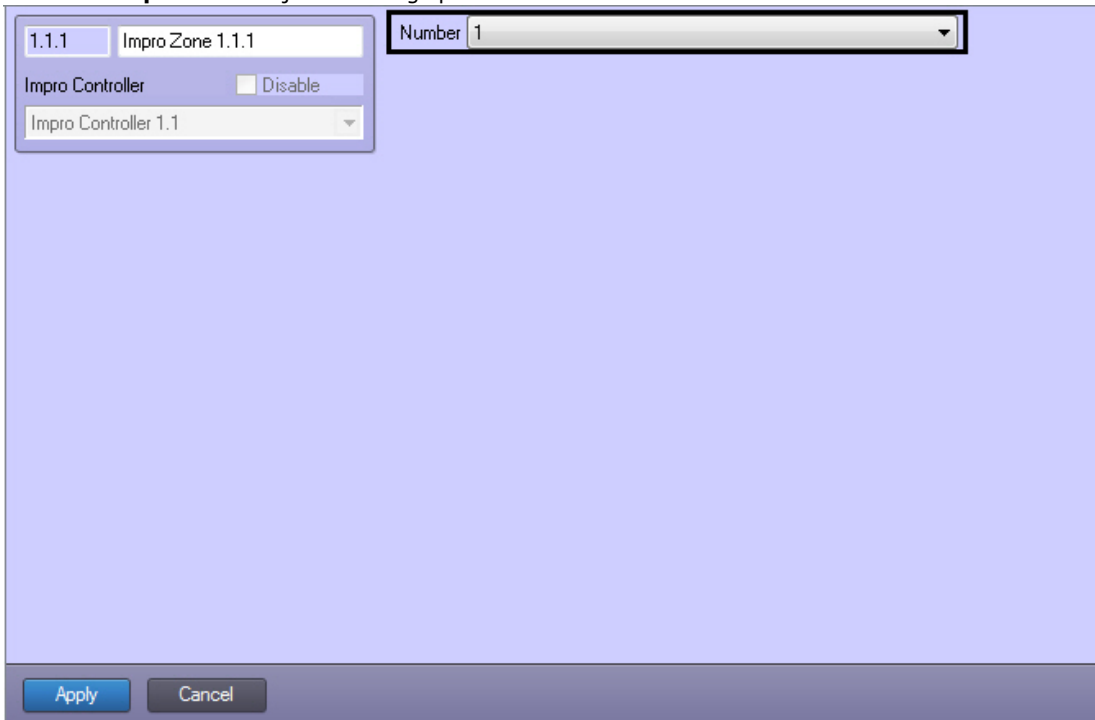
Configure the Impro zone

The security zone is configured on the **Impro Zone** object's settings panel. This object is created based on a **Impro Controller** object on the **Hardware** tab of the **System Settings** dialog window.



To configure the security zone do the following:

1. Go to the **Impro Zone** object's settings panel.

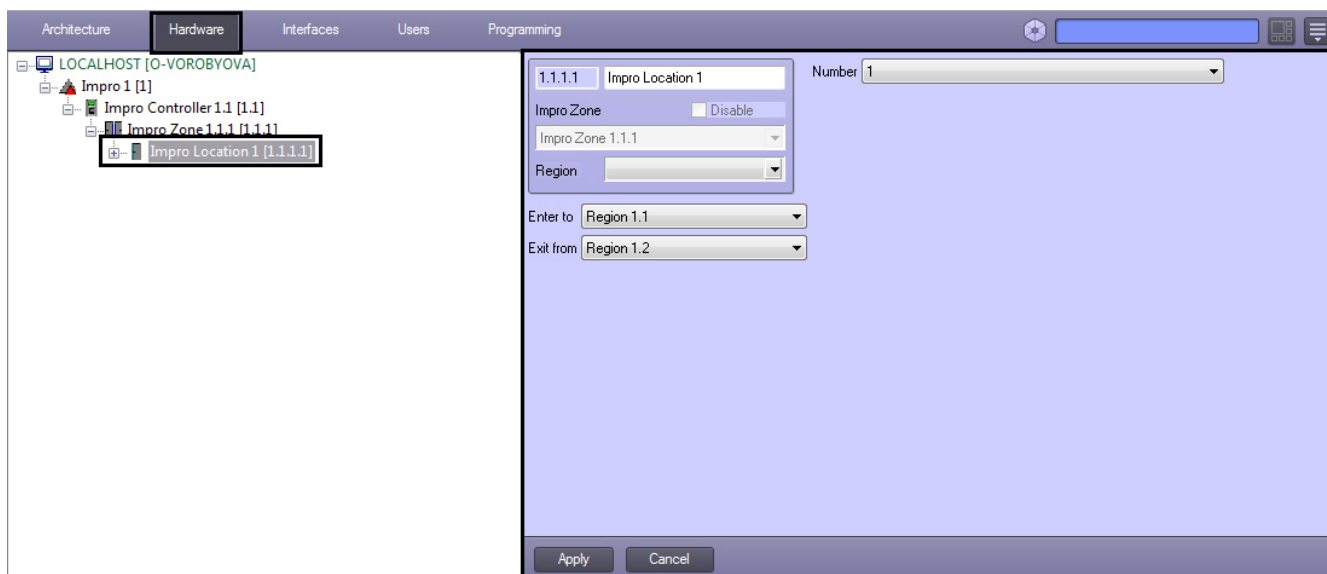


2. From the **Number** drop-down list select the identification number of the zone.
3. To save changes click **Apply**.

Configuring of the *Impro* zone is completed.

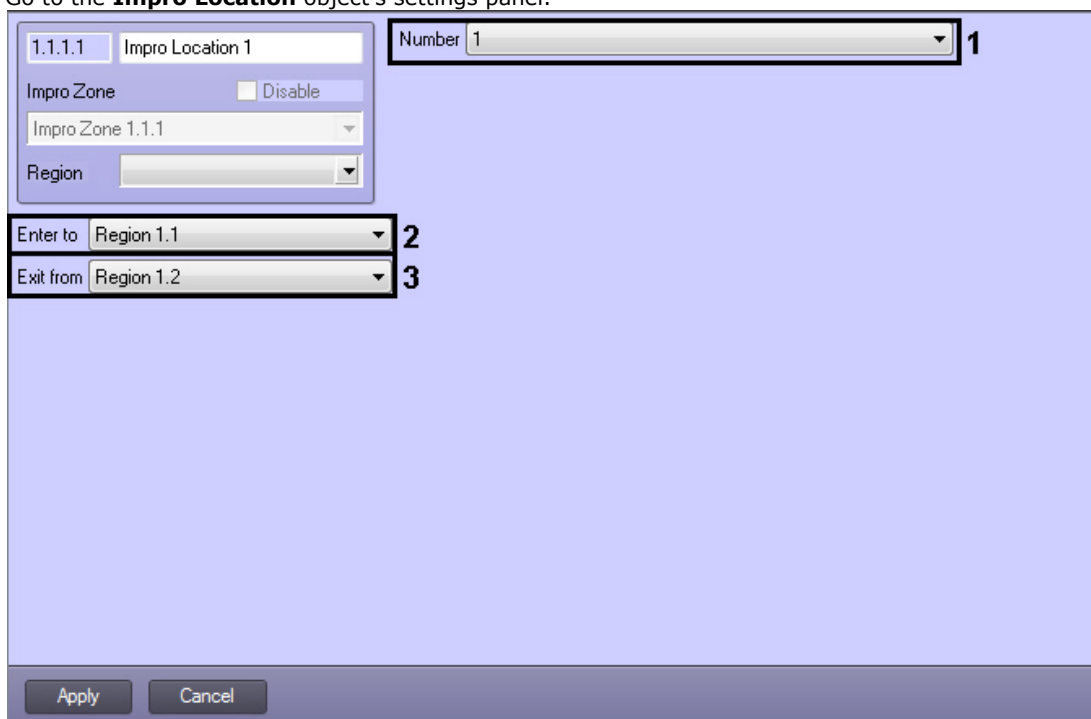
Configure the Impro access point

The access point is configured on the **Impro Location** object's settings panel. This object is created based on a **Impro Zone** object on the **Hardware** tab of the **System Settings** dialog window.



To configure the access point do the following:

1. Go to the **Impro Location** object's settings panel.



2. From the **Number** drop-down list select the identification number of the access point (**1**).
3. From the **Enter to** drop-down list select the **Region** object corresponding to the area to which entry is performed (**2**).
4. From the **Exit from:** drop-down list select the **Region** object corresponding to the area from which exit is performed (**3**).
5. To save changes click the **Apply** button.

Configuring the *Impro* access points is completed.

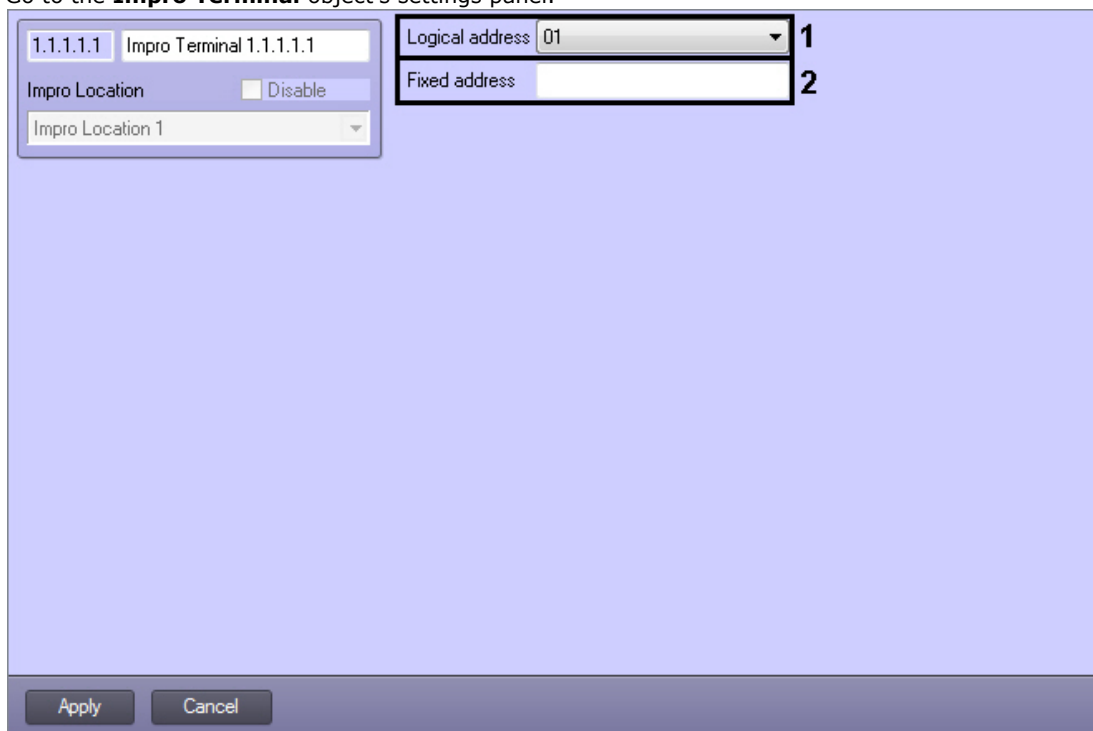
Configure the Impro terminal

The terminal is configured on the **Impro Terminal** object's settings panel. This object is created based on a **Impro Location** object on the **Hardware** tab of the **System Settings** dialog window.



To configure the terminal do the following:

1. Go to the **Impro Terminal** object's settings panel.

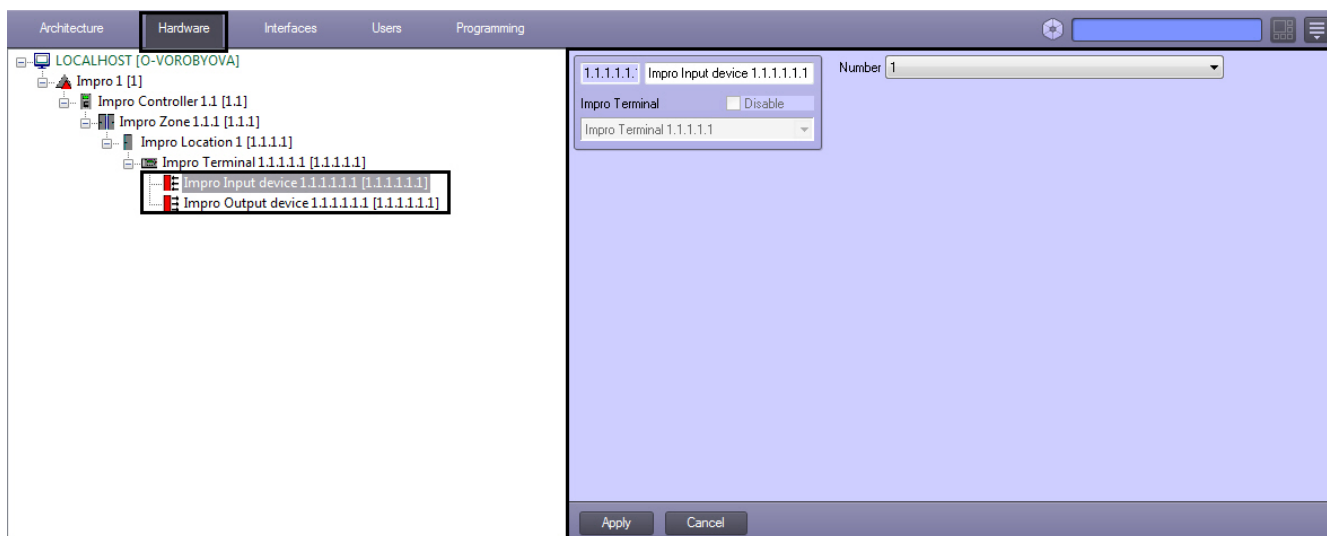


2. From the **Logical address** drop-down list select the terminal logical address specified while hardware configuring in the vendor's software (**1**).
3. In the **Fixed address** enter the terminal address for its identification (**2**).
4. To save changes click **Apply**.

Configuring of the *Impro* terminal is completed.

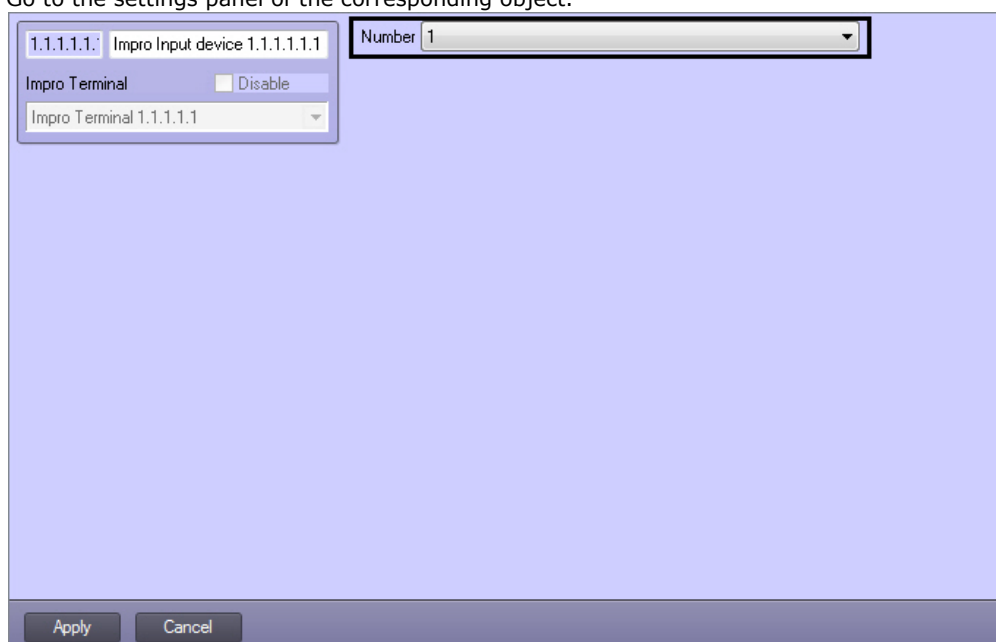
Configure the Impro input and output

The *Impro* input and output are configured on the **Impro Input device** and **Impro Output device** object's settings panel correspondingly. These objects are created based on a **Impro Terminal** object on the **Hardware** tab of the **System Settings** dialog window.



To configure the input or output do the following:

1. Go to the settings panel of the corresponding object.



2. From the **Number** drop-down list select the identification number of the zone.
3. To save changes click **Apply**.

Configuring of the *Impro* input and output is completed.

Working with the Impro integration module

The following interface objects are used for working with *Impro* integration module:

1. **Map**;
2. **Events protocol**.

Information about **Map** and **Events protocol** interface objects' configuration is given in the [Intellect Software Package: Administrator's Guide](#).

Working with these interface objects is given in details in [Intellect Software Package: Operator's Guide](#).



Note.

Interactive map allows to monitor states of the *Impro* objects. Control of the *Impro* objects is not performed.