



ACFA Intellect Installation Guide

1. ACFA Intellect Installation Guide. Introduction	3
2. General information about ACFA Intellect software package	3
2.1 Structure of the ACFA Intellect software package	3
2.2 Purpose of ACFA Intellect Fire and Security Alarm	3
2.3 Purpose of ACFA Intellect Access Control System	3
2.4 Purpose of ACFA Intellect perimetral security system	3
2.5 Purpose of ACFA Intellect FSA, ACS and PSS integration modules	3
3. Installing, removing and updating of ACFA Intellect software package	4
3.1 Installation of the ACFA Intellect software package	4
3.1.1 Completion the installation of the Work Time Accounting module	7
3.1.2 Installation of the ORC Wrapper integration module	7
3.1.3 Installation of the ApolloSDK integration module	7
3.2 Changing the ACFA Intellect software package	7
3.3 Repairing of the ACFA Intellect software package	10
3.4 Updating of the ACFA Intellect software package	13
3.5 Removing of the ACFA Intellect software package	13

ACFA Intellect Installation Guide.

Introduction

ACFA Intellect Installation Guide is a reference guide for installation and configuration specialists of the *ACFA Intellect* software package.

This Guide contains:

1. General information about *ACFA Intellect* software package.
2. Installing of *ACFA Intellect* software package.
3. Changing of *ACFA Intellect* software package.
4. Repairing of *ACFA Intellect* software package.
5. Updating of *ACFA Intellect* software package.
6. Removing of *ACFA Intellect* software package.

To get detailed information on how to configure and work with any *ACFA Intellect* integration module see the corresponding document of this integration module.

General information about ACFA Intellect software package

Structure of the ACFA Intellect software package

ACFA Intellect software package contains following subsystems:

1. Access Control Subsystem (ACS).
2. Fire and Security Alarm (FSA).
3. Perimetral Security System (PSS).

Each subsystem includes integration modules of corresponding devices.

Purpose of ACFA Intellect Fire and Security Alarm

ACFA Intellect Fire and Security Alarm (FSA) performs following functions:

1. processing information coming from security panels, alarm sensors, and other notifiers;
2. managing actuators – sound and light notifiers, and others.

FSA is a combination of software and hardware. Hardware portion consist of FSA system of other manufacturer integrated into *ACFA Intellect*. Software portion consist of integration modules that allow configuring interaction between *ACFA Intellect* and the hardware portion.

Purpose of ACFA Intellect Access Control System

ACFA Intellect Access Control System (ACS) has the following module structure:

1. integration modules of ACS device;
2. *PhotoIdentification* module;
3. *Visitor Management System* module;
4. *Work Time Accounting* module.

ACFA Intellect ACS performs following functions (depending on which functional modules are installed):

1. combining access control with other security subsystems in a single control centers of a distributed system;
2. programming ACS responses to events, including those occurring in other security subsystems;
3. highly automated access rights management;
4. combining user groups;
5. monitoring of system condition/performance.

Purpose of ACFA Intellect perimetral security system

ACFA Intellect Perimetral Security System performs following functions:

1. processing information coming from perimetral security sensors and from sensors mounted on the entry to the object secured by perimeter.
2. managing actuators - security lighting tools, tools of entry control (turnslite, turnpike).

ACFA Intellect Perimetral security system is a combination of software and hardware. Software portion consist of program modules which allow configuring interaction between *ACFA Intellect* software package and hardware. Hardware portion consist of PSS of third party manufacturer.

Purpose of ACFA Intellect FSA, ACS and PSS integration modules

FSA, ACS and PSS integration modules perform following functions:

1. configuring interaction between ACFA Intellect software package and FSA/ACS/PSS device;



Note.

The hardware is a third-party FSA/ACS/PSS.

2. processing information coming from security panels, alarm sensors and other notifiers (if FSA functions are integrated);
3. processing information coming from readers, electromechanical locks and other tools of access control (if ACS functions are integrated);
4. managing alarm actuators and firefighting-related actuators (if the FSA functions are integrated);
5. managing access-related actuators (devices for locking and unlocking gates) (if the FSA functions are integrated).

Installing, removing and updating of ACFA Intellect software package

Installation of the ACFA Intellect software package

The *ACFA Intellect* software is installed as a part of the *Intellect* software. Information about compatibility of the *Intellect* software versions and *ACFA Intellect* is presented by link: [General information about product releases and versions compatibility](#).

Before the *ACFA Intellect* installation perform the *Intellect* software package installation.



Note.

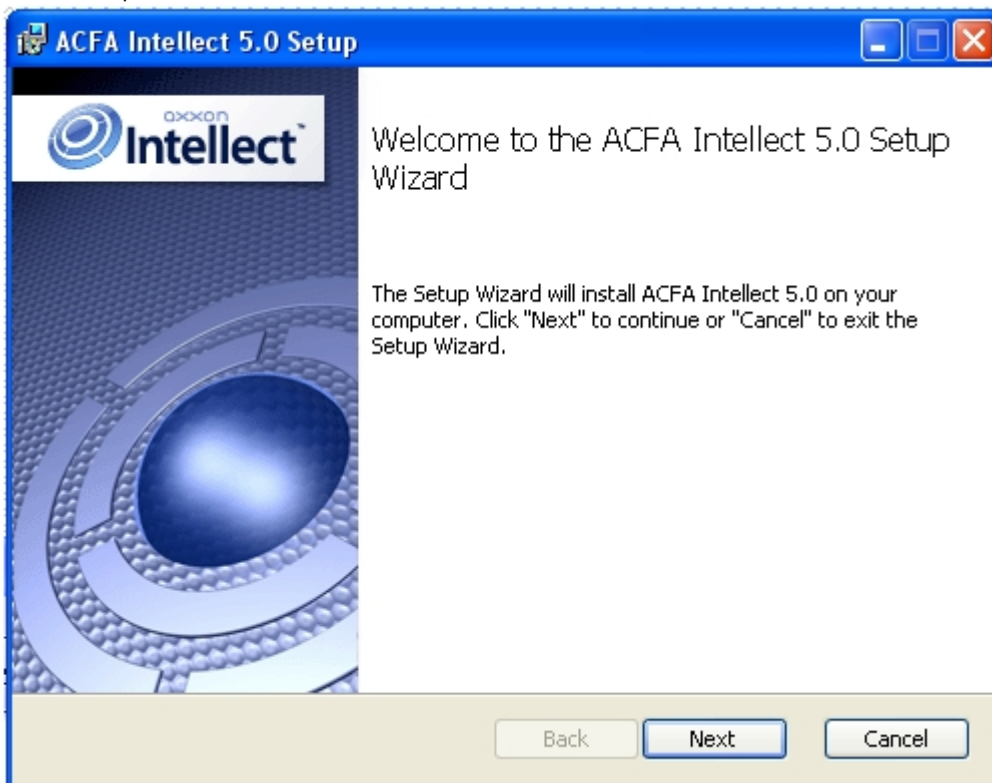
Language of installer and installation language are defined on the basis of language which was in use while base Intellect installation. Change of localization language with the help of language packs after base Intellect installation will not influence on language of ACFA Intellect installation.

Installation of the *ACFA Intellect* software package is performed as follows:

1. Start the *setup.exe* file from the archive of *ACFA Intellect* installer package.

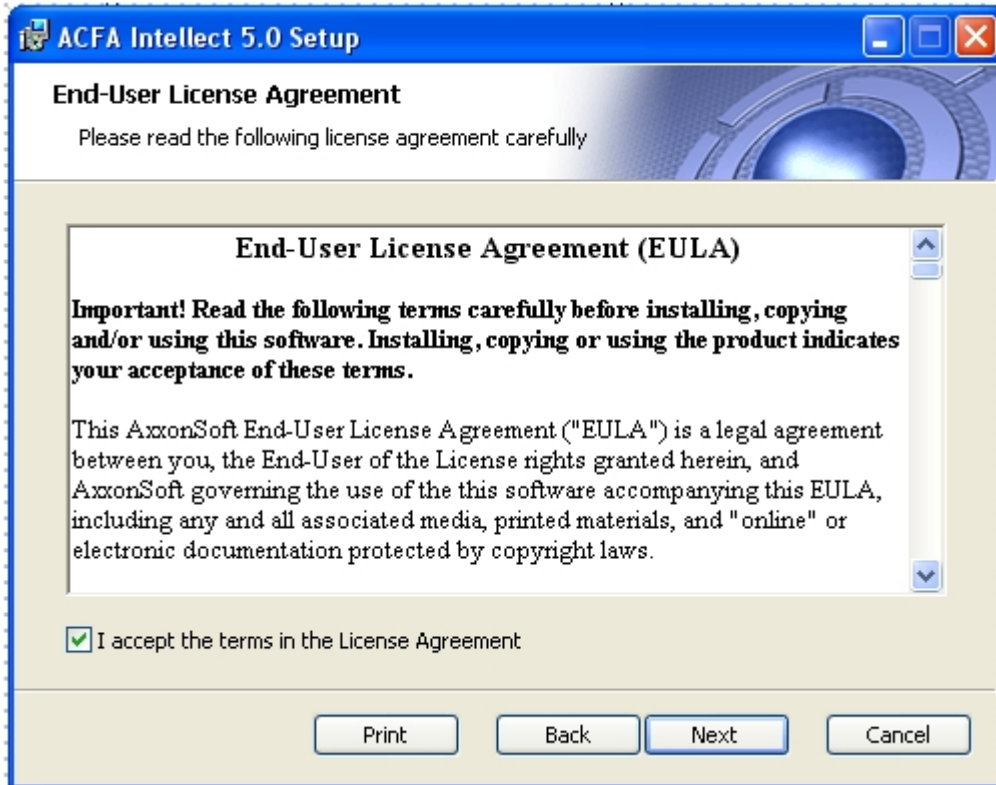


2. The dialog window with the **Welcome to the ACFA Intellect Setup Wizard** message is displayed. To continue the installation process click the **Next** button. To cancel installation click the **Cancel** button.



3. In the next dialog window accept or decline the terms of the License agreement about using of *ACFA Intellect* techn

ology. To print the agreement click the **Print** button.

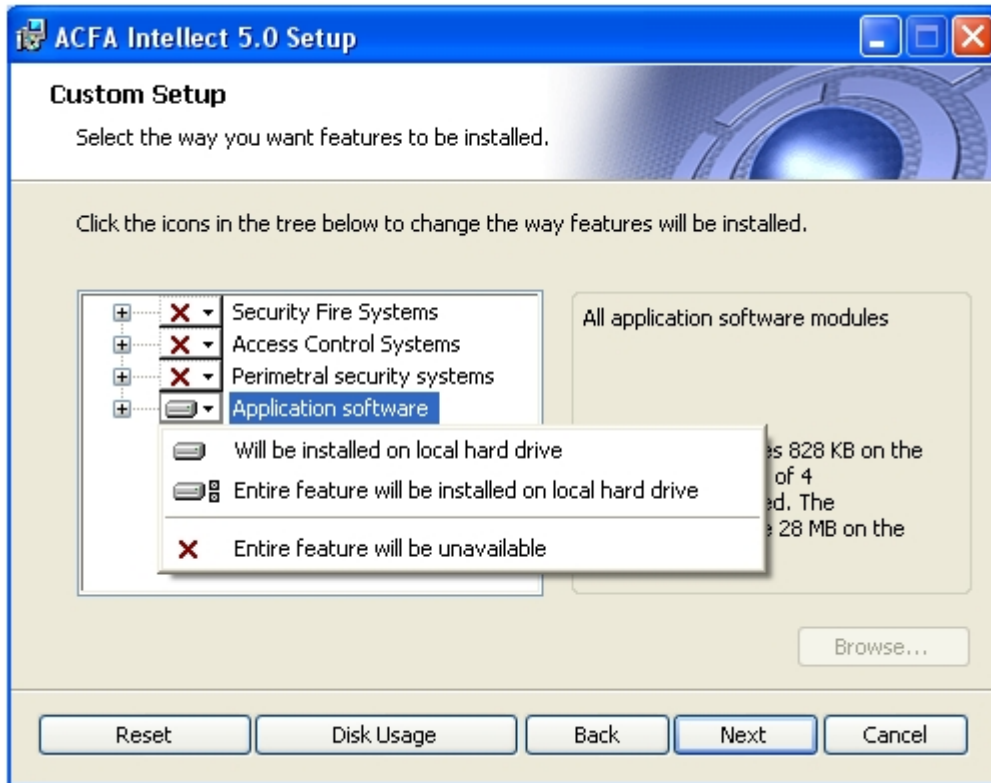


After the terms review confirm the acceptance of license agreement by setting the **I accept the terms of the License agreement** checkbox and clicking the **Next** button. Otherwise, cancel the installation.

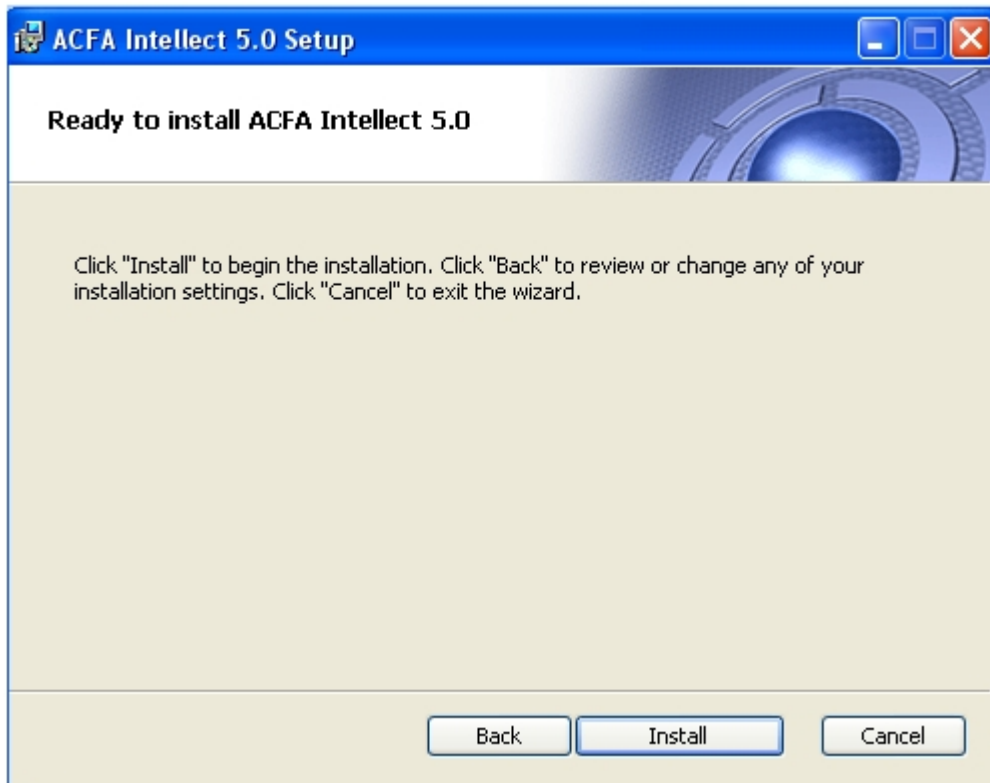
4. In the **Custom Setup** dialog window select modules which are to be installed. To install module or *ACFA Intellect* subsystem select the **Entire feature will be installed on local hard drive** item.

Information about component and about required disk space is displayed in the right when selecting some component.

To accept all changes and continue installation process click the **Next** button.

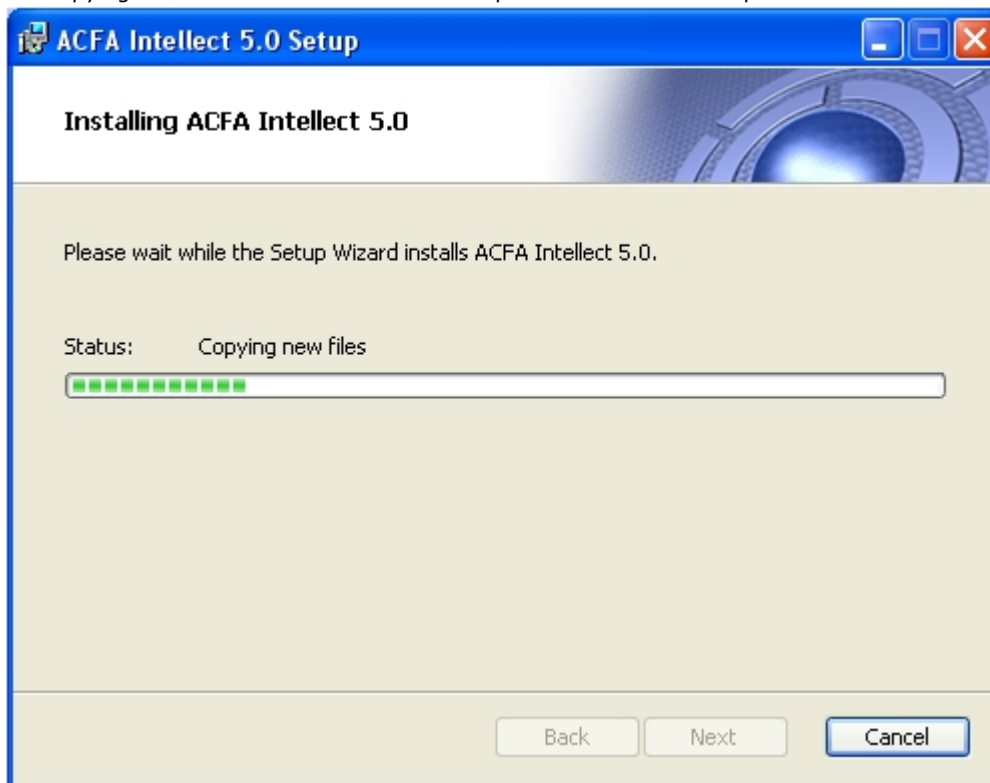


5. In the **Ready to install ACFA Intellect** dialog window run the process of *ACFA Intellect* installation. To run the installation process click the **Install** button.



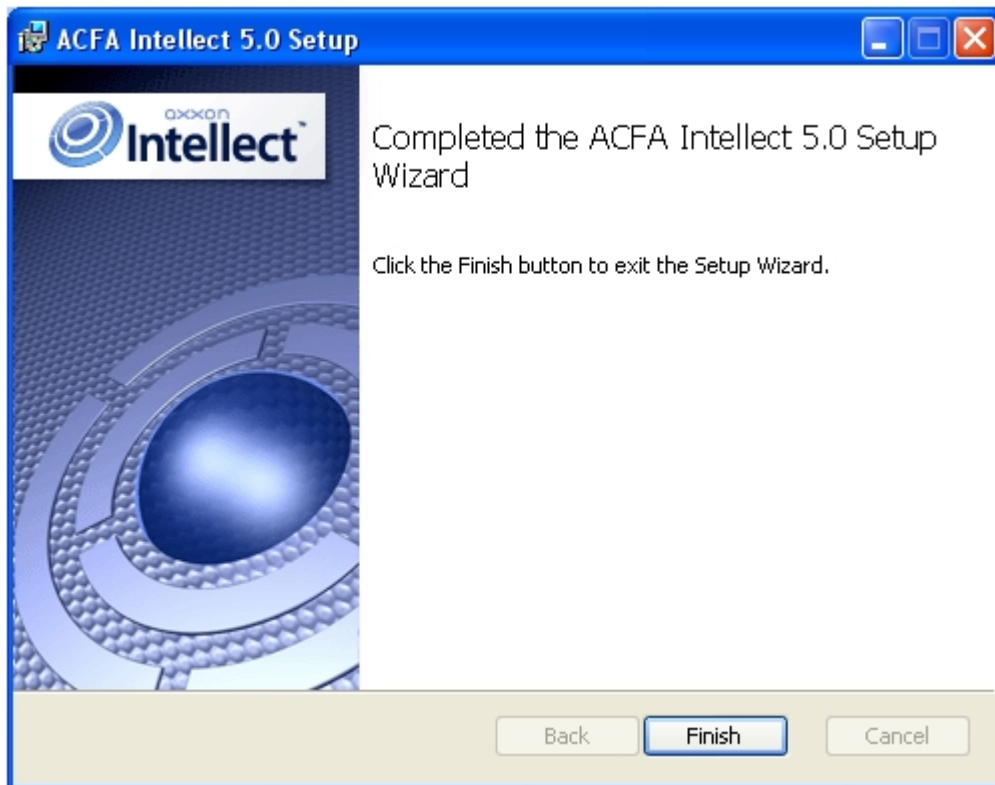
To change settings click the **Back** button.

6. The copying of *ACFA Intellect* files on the computer hardware will be performed.



Wait for the completion of copying files and next updating of installation box.

7. Message that *ACFA Intellect* installation on the hardware is finished is displayed in a new dialog box.



8. To complete the wizard working click the **Ready** button.

Note.

After the *ACFA Intellect* is installed it is recommended to update the DB structure using the `idb.exe` utility located in the Intellect software directory. Database updating is performed by clicking the **Update database** button in the utility window.

The *ACFA Intellect software package* installation is finished.

For some modules performing additional actions or installation of additional software can be required after installation of the *ACFA Intellect* software. Description of installation such modules is presented in following sections.

Completion the installation of the Work Time Accounting module

Update the database using the `updateDB.exe` utility (see the *Time and Attendance Module Settings and Operation Guide* document) if installation of the *Work Time Accounting* was performed.

Installation of the ORC Wrapper integration module

ORC Wrapper integration module is included in the *ACFA Intellect* software package. After installation the *ACFA Intellect* software package do the following for correct module working

1. Go to the *Intellect* software installation directory\Modules\ORCServer.
2. Start the `setup.exe` executive file and perform installation of required components.

Installation of the ApolloSDK integration module

Installation of the *ApolloSDK* integration module is performed after completion the installation of the *ACFA Intellect* software package. To install the *ApolloSDK* integration module, do the following:

1. Unpack the **ApolloSDKv6.2(2012.11.30)Installer** archive which is located in the *Intellect software installation directory*\Modules\ApolloSDK.
2. Run the **ApolloSDKv6.2(2012.11.30)Installer\ApolloSDKSetup.exe** executive file to install the *Apollo* server version 6.2.

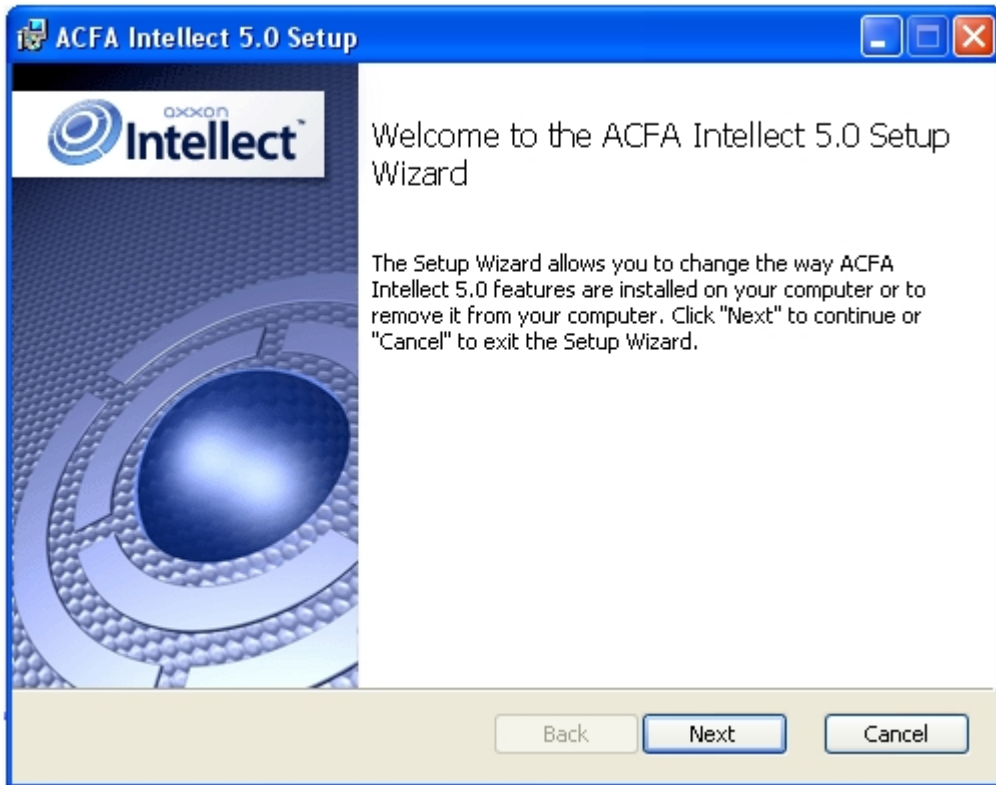
Attention!

Functioning the *ApolloSDK* with other servers is not guaranteed.

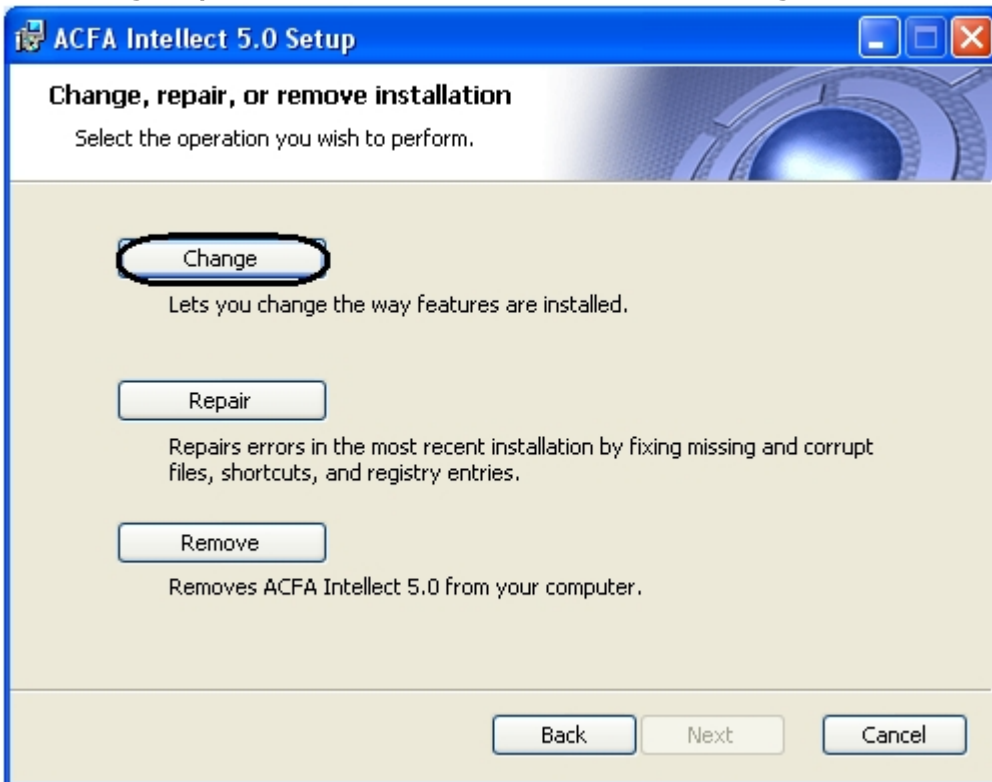
Changing the ACFA Intellect software package

To add or remove some *ACFA Intellect* components, do the following:

1. Run the **setup.exe** executive file installer of installed *ACFA Intellect* version or select **Remove ACFA Intellect** item in the **Start -> Programs -> Intellect** menu.
2. Window with **Welcome to the ACFA Intellect Setup Wizard** message is displayed. Click the **Next** button.



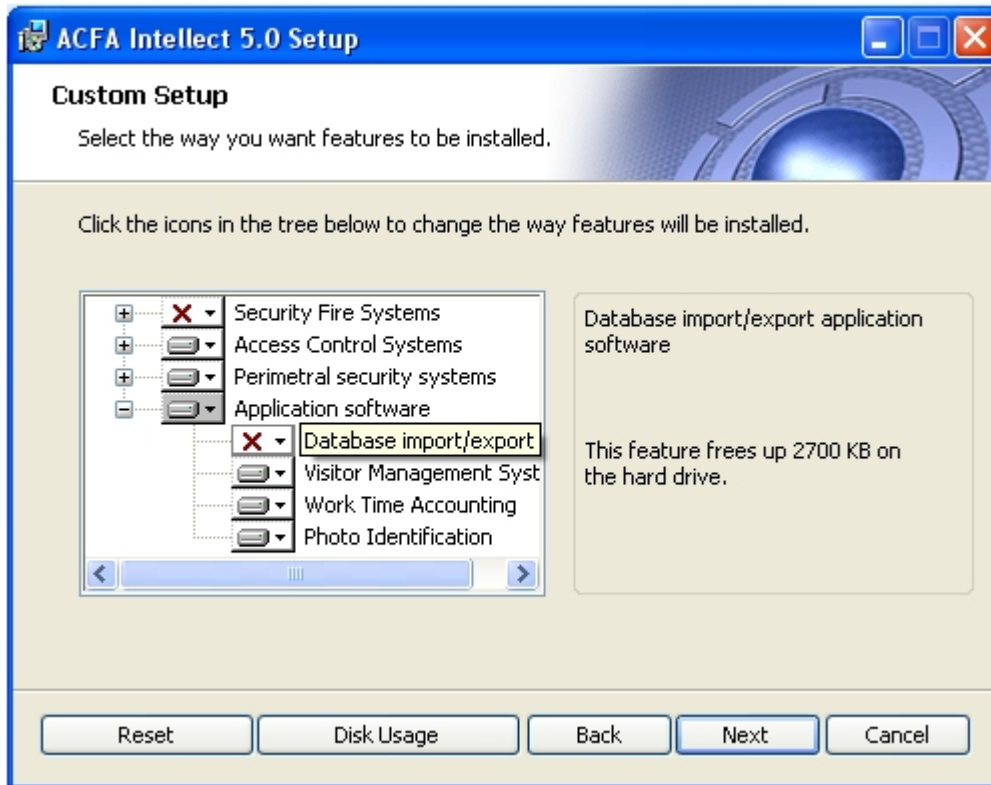
3. In the **Change, repair, or remove installation** window click the **Change** button.



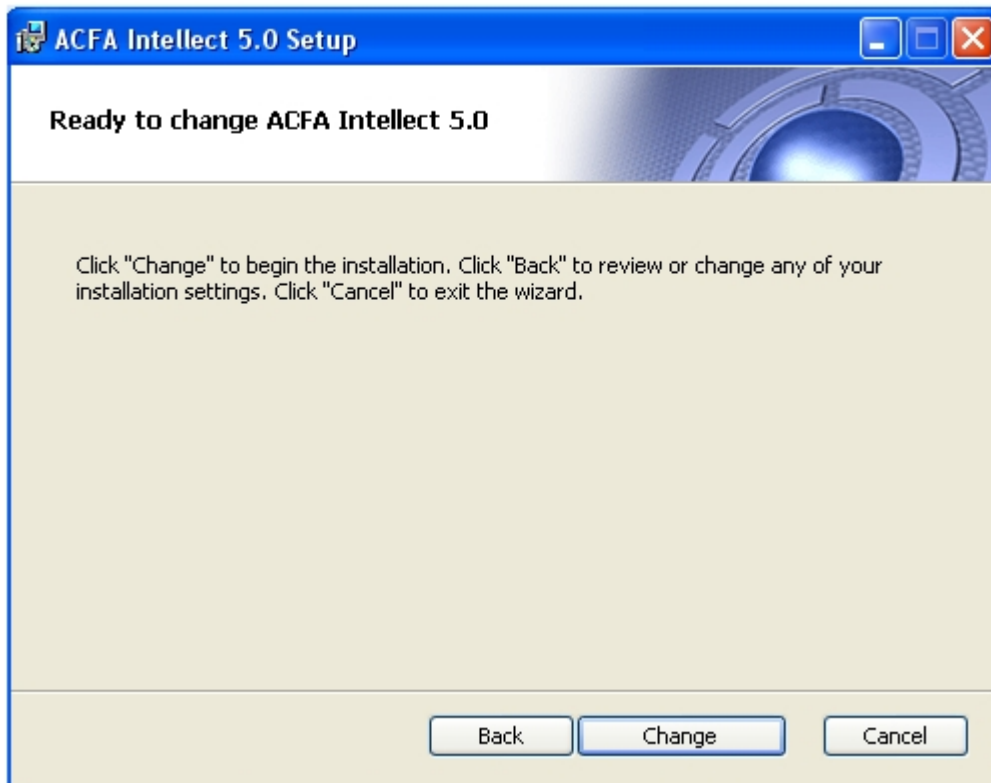
4. In the opened **Custom Setup** window select components which are to be installed or removed. To install module or ACFA Intellect subsystem select the **Entire feature will be installed on local hard drive** item. To remove component select the **Entire feature will be unavailable** item. Information about component and about required disk space is displayed in the right when selecting some

component.

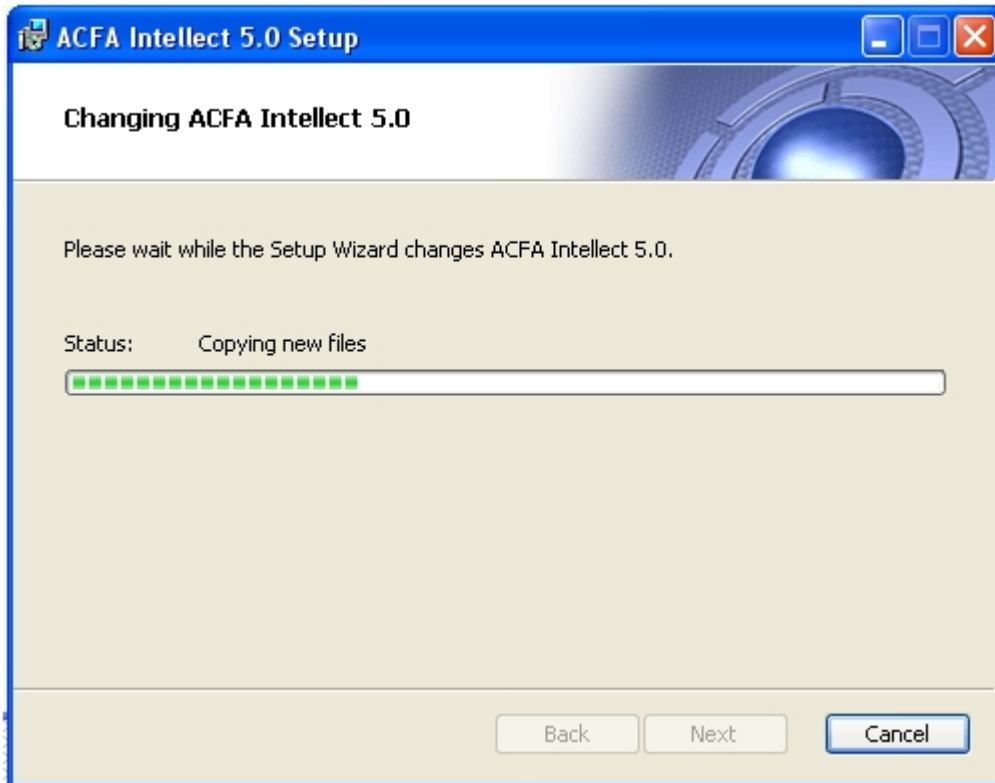
When all required components are selected click the **Next** button.



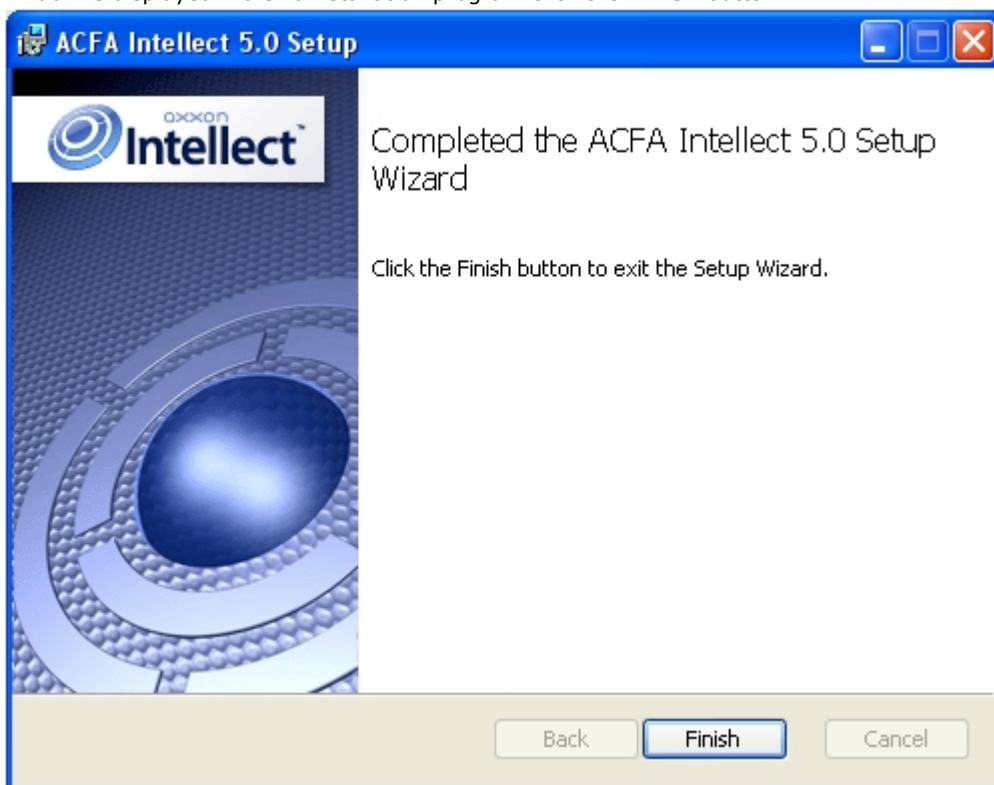
5. In the **Ready to change ACFA Intellect** dialog window start process of installing or removing selected components. To continue click the **Change** button.



6. Process of installing and/or removing required components of *ACFA Intellect* will be started.



7. When process of *ACFA Intellect* changing is completed the **Completed the ACFA Intellect Setup Wizard** dialog window is displayed. To exit installation program click the **Finish** button.

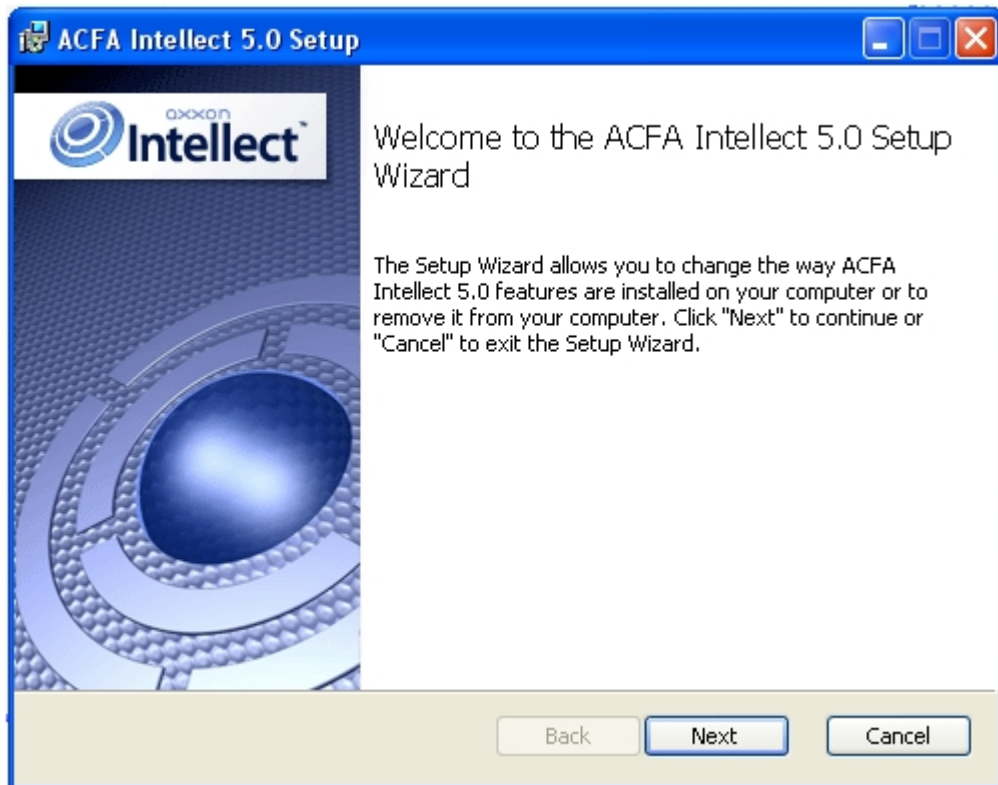


Change of *ACFA Intellect* software package is completed.

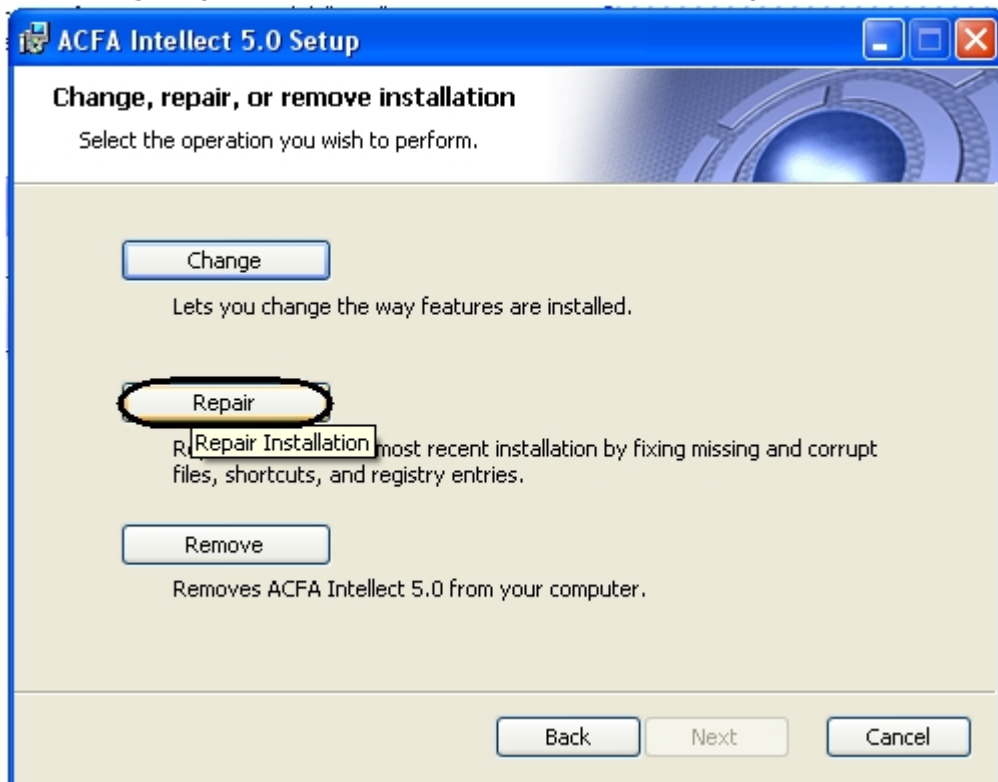
Repairing of the ACFA Intellect software package

To correct mistakes occurred after the *ACFA Intellect* installation by repair failing files, tags and registry entries, do the following:

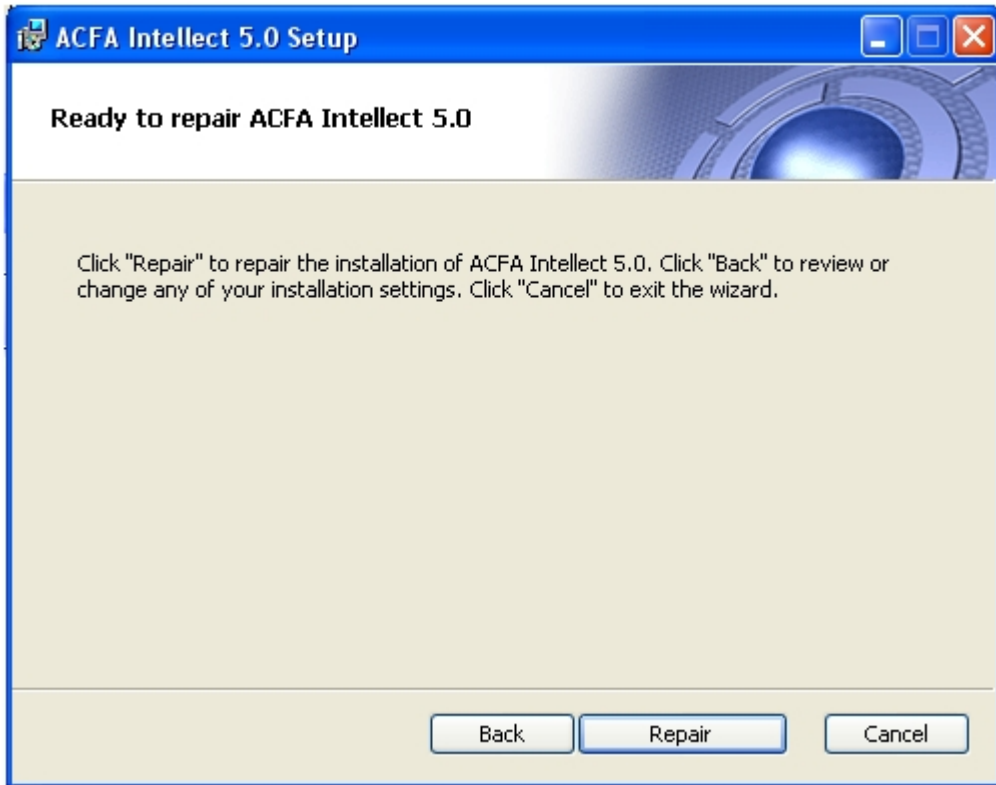
1. Start the setup.exe file from installer of installed *ACFA Intellect* version or select **Remove ACFA Intellect** item in the **Start -> Programs -> Intellect** menu.
2. Window with **Welcome to the ACFA Intellect Setup Wizard** message is displayed. Click the **Next** button.



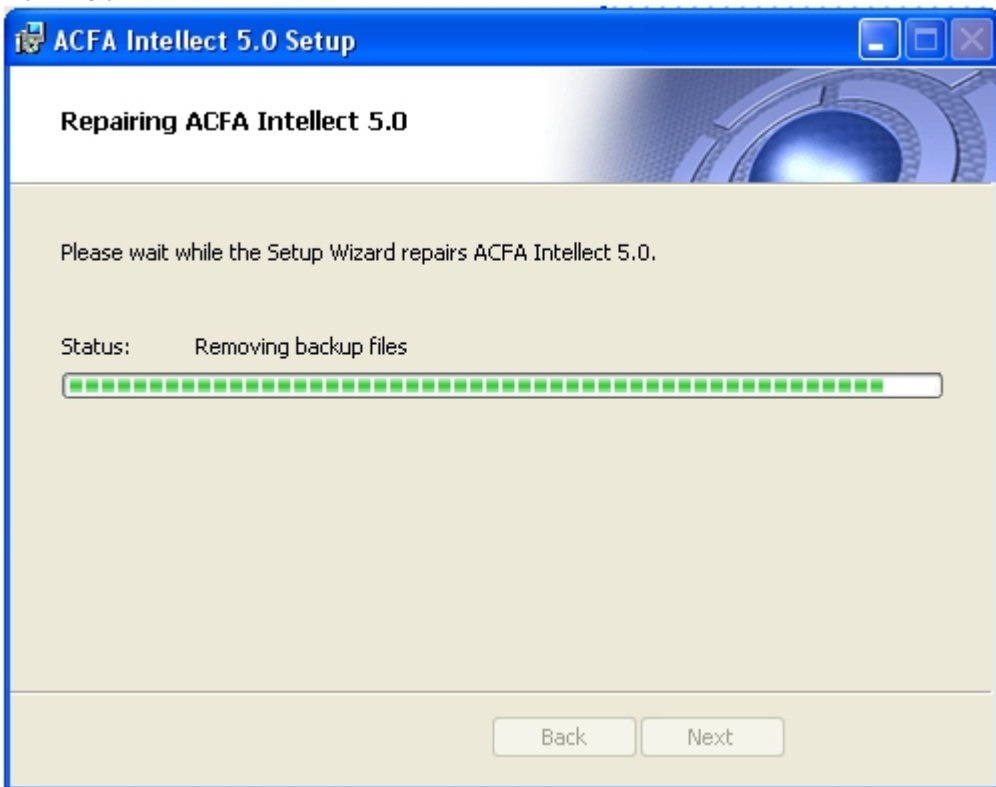
3. In the **Change, repair, or remove installation** window click the **Repair** button.



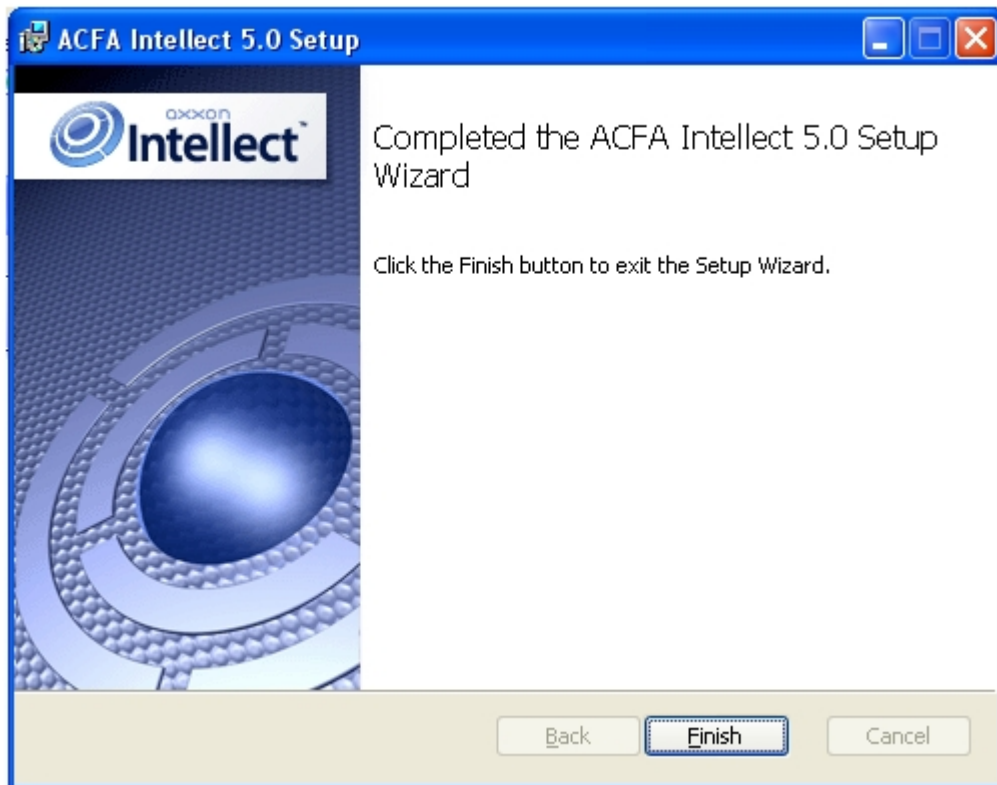
4. In the **Ready to repair ACFA Intellect** window start the repairing process. To do this click the **Repair** button.



5. Repairing process will be started.



6. When repairing process is completed the window with corresponding message is displayed.



Repairing of the *ACFA Intellect* software package is completed.

Updating of the ACFA Intellect software package

To update the *ACFA Intellect* software package from versions which are differed from new version in the first number (e.g from version 4.8.8.to version 5.0), remove manually the old version of the *ACFA Intellect* software package and then install new version of product (see [Removing of the ACFA Intellect software package](#) and [Installation of the ACFA Intellect software package](#) sections).

Updating of the *ACFA Intellect* from version 5.0 and above is performed in standard mode (see [Installation of the ACFA Intellect software package](#) section).To start updating run the setup.exe file from installer of new version. When the *ACFA Intellect* updating it is possible to change installation of *ACFA Intellect* old version, add or remove some modules.



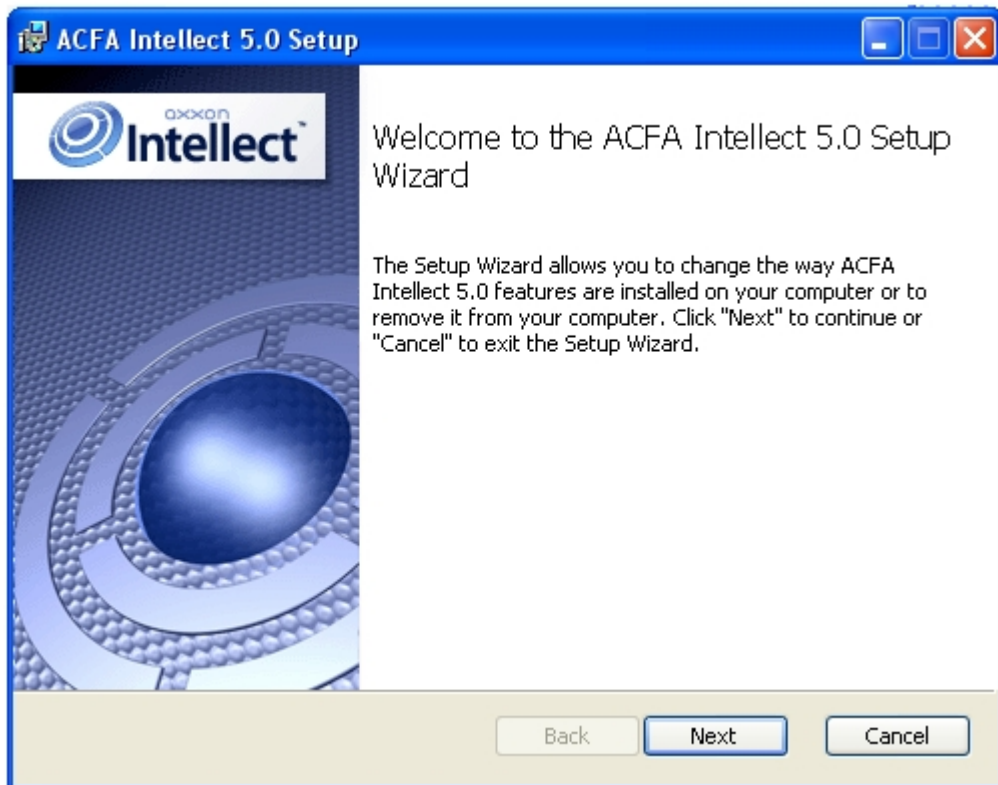
Note.

Change of installation is possible without updating the *ACFA Intellect* version (see [Changing the ACFA Intellect software package](#)).

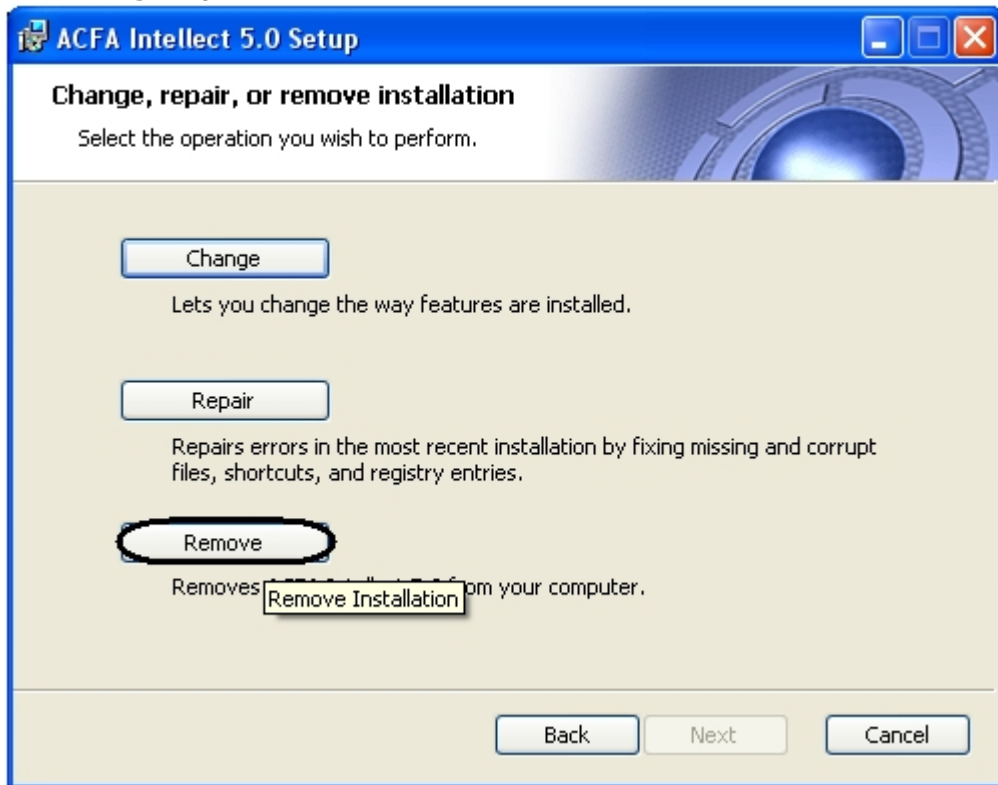
Removing of the ACFA Intellect software package

To remove *ACFA Intellect* software package, do the following:

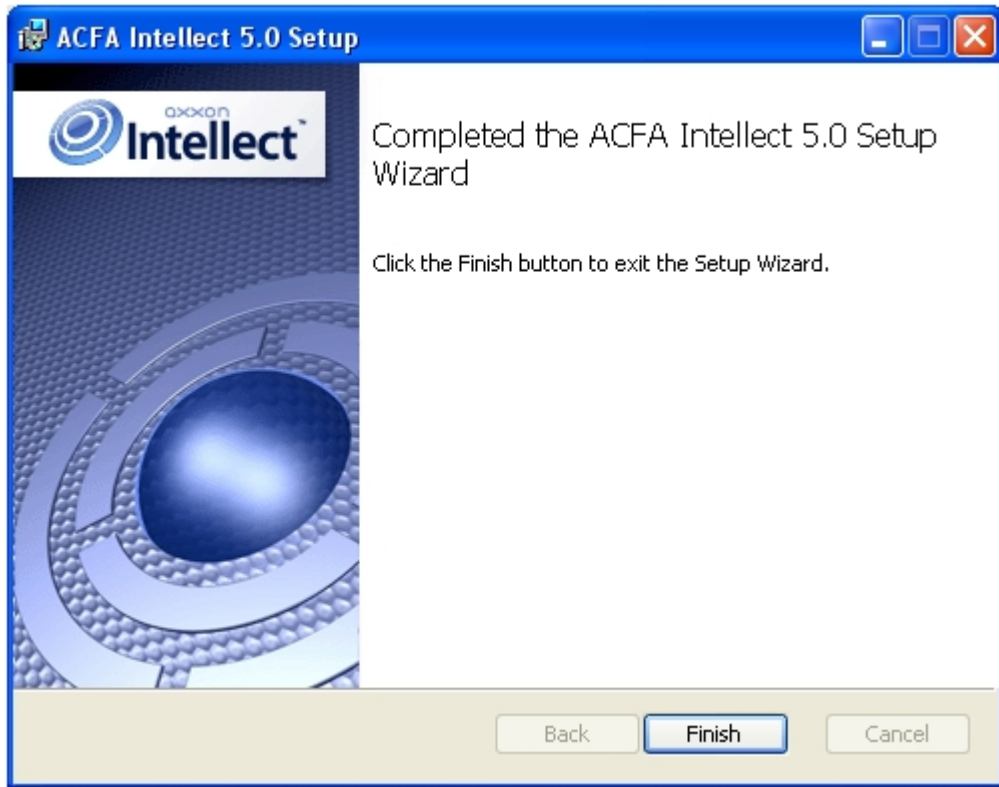
1. Run the setup.exe file from installer of installed *ACFA Intellect* version or select **Remove ACFA Intellect** item in the **Start -> Programs -> Intellect** menu.
2. Window with **Welcome to the ACFA Intellect Setup Wizard** message is displayed. Click the **Next** button.



3. In the **Change, repair, or remove installation** window click the **Remove** button.



4. In the ready to remove *ACFA Intellect* window start the removing process. Click the **Remove** button.



Removing of the *ACFA Intellect* is completed.