



NCG-9 Controller Integration Module
Settings Guide

1. List of terms used in NCG-9 Controller Integration Module Settings Guide	3
2. Introduction into NCG-9 Controller Integration Module Settings Guide	3
3. Supported hardware and licensing of the NCG-9 integration module	3
4. Configuration of the NCG-9 controller integration module	4
4.1 Configuration procedure for the NCG-9 controller integration module	4
4.2 Configuring the NCG-9 controller connection	4
4.3 Time synchronization of ACFA Intellect software package and NCG-9 controller	5
4.4 Configuring the NCG-9 input	6
4.5 Configuring the NCG-9 partition	6
4.6 Configuring the NCG-9 relay	7
5. Working with NCG-9 controller integration module	8
5.1 General information on the operation of the NCG-9 controller integration module	8
5.2 Controlling NCG-9 controller	9
5.3 Controlling NCG-9 relay	9

List of terms used in NCG-9 Controller Integration Module Settings Guide

Intellect server – a computer with the *Intellect* **server** configuration installed.

Controller – a device designed to control personnel entry/exit to limited-access areas, for reading and decoding the access card code, automatic badge registration in the ACS, and performance monitoring

Introduction into NCG-9 Controller Integration Module Settings Guide

On the page:

- [Purpose of the document](#)
- [General information about the NCG-9 controller integration module](#)

Purpose of the document

The *NCG-9 controller integration module settings guide* provides comprehensive setup and operational guidance for *NCG-9* module operators.

This module is part of a *Fire Security Alarm (FSA)* built on the *ACFA Intellect* Software System.

This Guide presents the following materials:

1. general information about the *NCG-9 controller* module;
2. *NCG-9 controller* module settings;
3. working with the *NCG-9 controller* module.

General information about the NCG-9 controller integration module

The *NCG-9* controller module is part of *ACS* subsystem built based on the *ACFA Intellect* Software System. It is designed to control *NCG-9* controller integration module.



Note:

Detailed information about the *NCG-9* controller can be found in the official documentation (manufacturer *ANDY*).

The *NCG-9* controller is designed for getting the output signal of the current state of system and transferring them to the monitoring center in the real time via local or global network.

Before configuring the *NCG-9* controller install the *NCG-9* controller on the site and connect it to the *Intellect* Server.

Supported hardware and licensing of the NCG-9 integration module

Manufacturer	Hi Tech Electronic LTD Main office - Plovdiv, Bulgaria bul."Osvobojdenie" 93, buil. 193, ent. V, fl.2, office 4Tel. +359 32 65 23 34Email: office@hitech-bg.com https://hitech-bg.com
Integration type	Low-level protocol
Equipment connection	IP

Supported equipment

Equipment	Function	Features
NCG-9	Controller	Inputs 8 Communication protocol TCP/IP

NCG-13	Controller	Inputs 13 Communication protocol TCP/IP
--------	------------	--

Protection
Parent object.

Configuration of the NCG-9 controller integration module

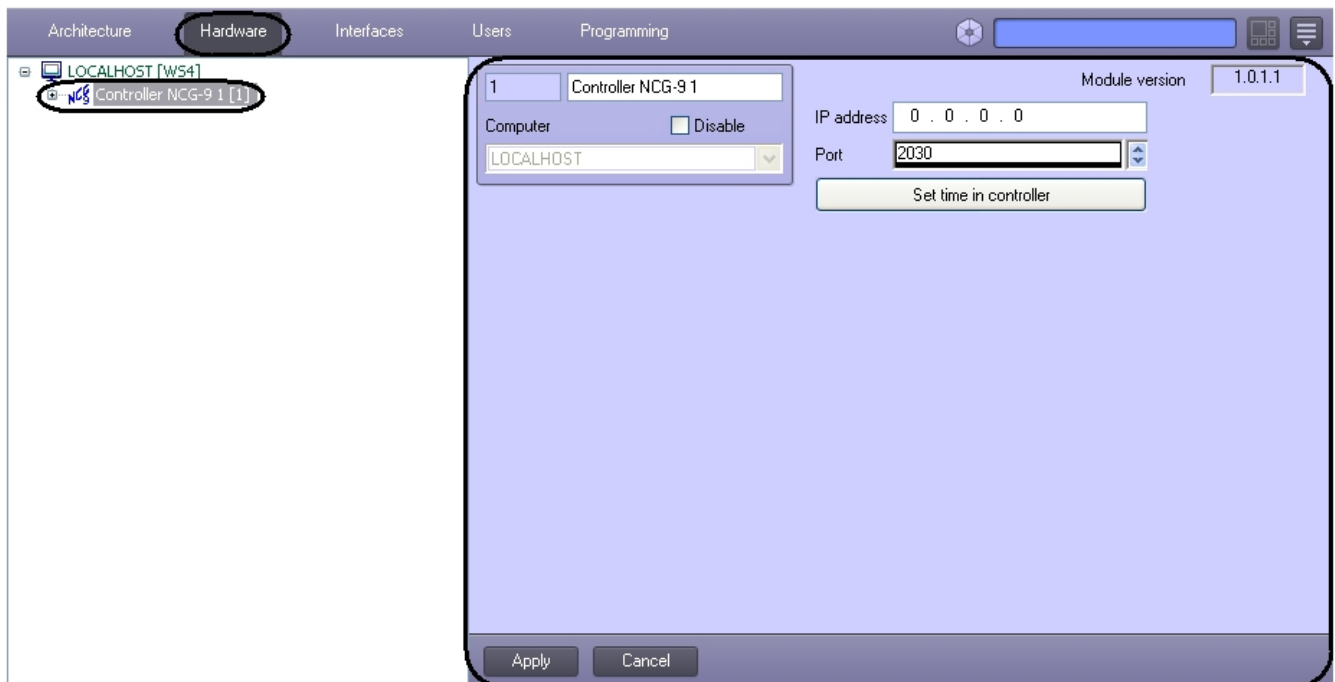
Configuration procedure for the NCG-9 controller integration module

The *NCG-9* controller integration module in the *ACFA Intellect* Software System is configured as follows:

1. Configure the *NCG-9* controller connection;
2. Synchronize time of the *ACFA Intellect* software package and *NCG-9* controller;
3. Configure *NCG-9* inputs;
4. Configure *NCG-9* partitions;
5. Configure *NCG-9* relay.

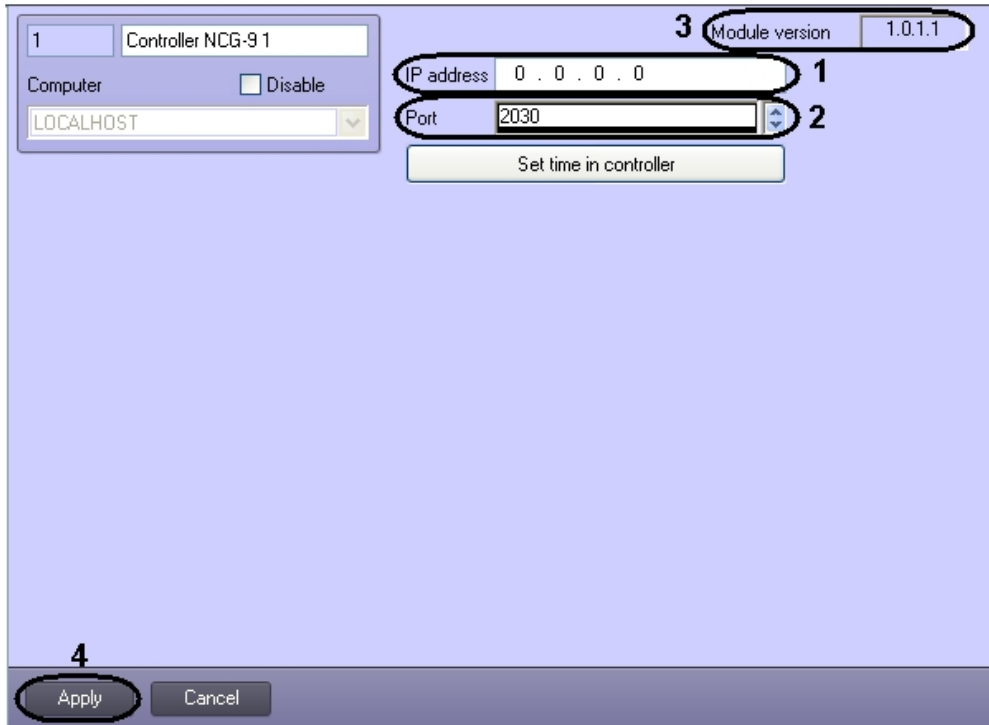
Configuring the NCG-9 controller connection

To configure the *NCG-9* controller connection go to the **Controller NCG-9** object's settings panel. To create this object, go to the **System settings** dialog box, click the **Hardware** tab and select a parent **Computer** object.



To configure the *NCG-9* controller connection, do the following;

1. Go to the **Controller NCG-9** object's settings panel.



Note. In the **Module version** field the version of the NCG-9 controller integration module is displayed (3).

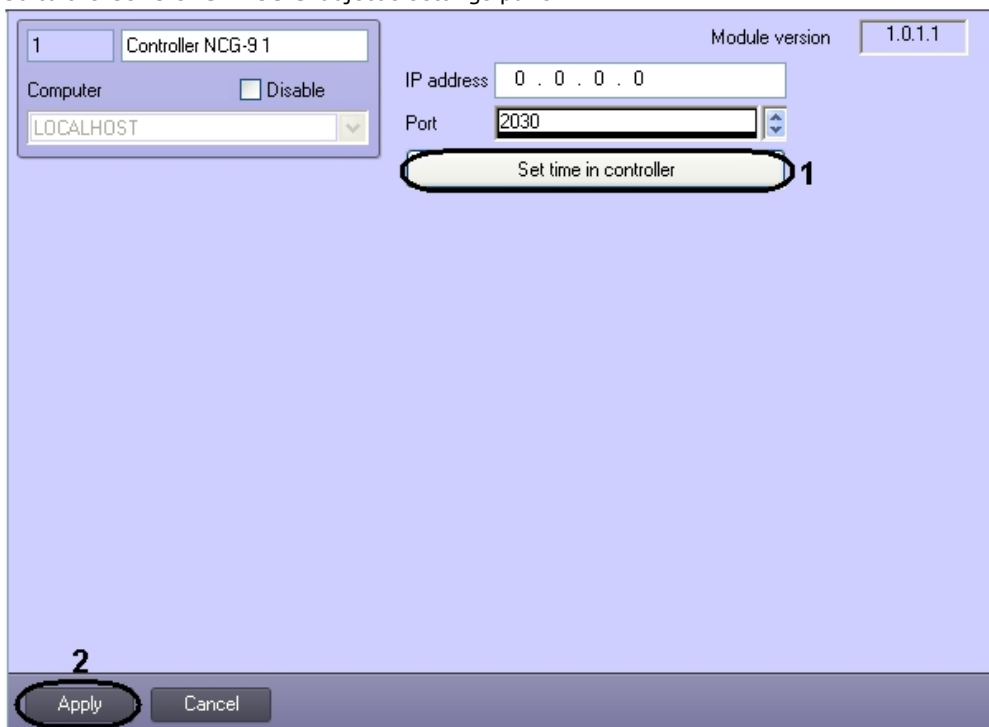
2. Enter the IP-address of the *NCG-9* controller in the **IP-address** field (1).
3. Using up-down buttons enter the number of port to which the controller is connected in the **Port** field (2).
4. Click **Apply** to save changes (4).

Configuring of the *NCG-9* controller connection is completed.

Time synchronization of ACFA Intellect software package and NCG-9 controller

To synchronize time between the *ACFA Intellect* software package and *NCG-9* controller, do the following:

1. Go to the **Controller NCG-9** object's settings panel.



2. To synchronize time between the *ACFA Intellect* software package and *NCG-9* controller click the **Set time in controller** button (1).
3. Click **Apply** (2).

Time synchronization of the *ACFA Intellect* software package and *NCG-9* controller is completed.

Configuring the NCG-9 input

To configure the *NCG-9* input go to the **Input NCG-9** object's settings panel. To create this object, go to the **System settings** dialog box, click the **Hardware** tab and select a parent **Controller NCG-9** object.



To configure the *NCG-9* input, do the following:

1. Go to the **Input NCG-9** area object's settings panel.



2. From the **Address** drop-down list select the number of corresponding input (**1**).
3. Click **Apply** to save changes (**2**).

Configuring of the *NCG-9* input is completed.

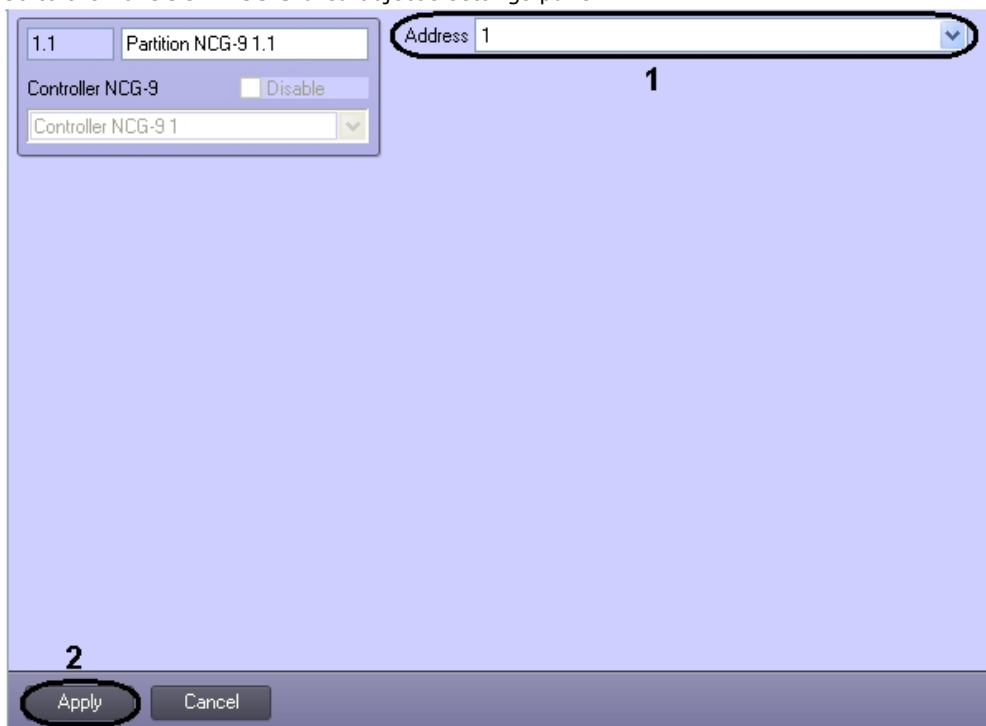
Configuring the NCG-9 partition

To configure the *NCG-9* partition go to the **Partition NCG-9** object's settings panel. To create this object, go to the **System settings** dialog box, click the **Hardware** tab and select a parent **Controller NCG-9** object.



To configure the *NCG-9* partition, do the following:

1. Go to the **Partition NCG-9** area object's settings panel.



2. From the **Address** drop-down list select the number of area from which events are to be received (**1**).
3. Click **Apply** to save changes (**2**).

Configuring of the *NCG-9* partition is completed.

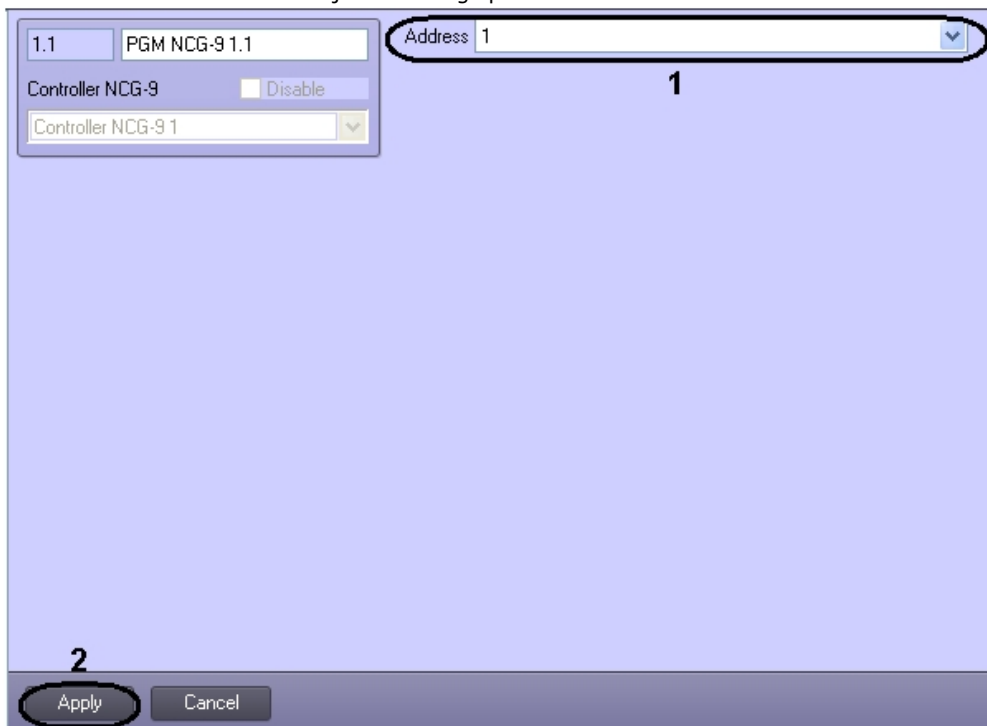
Configuring the *NCG-9* relay

To configure the *NCG-9* relay go to the **PGM NCG-9** object's settings panel. To create this object, go to the **System settings** dialog box, click the **Hardware** tab and select a parent **Controller NCG-9** object.



To configure the *NCG-9* relay, do the following:

1. Go to the **PGM NCG-9** area object's settings panel.



2. From the **Address** drop-down list select the number of area from which events are to be received (1).
3. Click **Apply** to save changes (2).

Configuring of the *NCG-9* relay is completed.

Working with NCG-9 controller integration module

General information on the operation of the NCG-9 controller integration module

The following interface objects are used for working with *NCG-9* controller integration module:

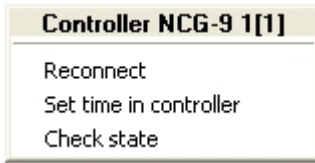
1. **Map;**
2. **Events protocol.**

Information about **Map** and **Events protocol** interface objects' configuration is given in the [Intellect Software Package: Administrator's Guide](#).

Working with these interface objects is given in details in [Intellect Software Package: Operator's Guide](#).

Controlling NCG-9 controller

Controlling *NCG-9* controller is carried out in **Map** interactive box using feature menu of **Controller NCG-9** object.



Note.

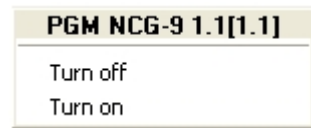
To open a functional menu of the object, click the right mouse button on this object.

Controlling *NCG-9* controller:

Menu command	Description
Reconnect	Break the connection and establish it again
Set time in controller	Synchronize time between the <i>ACFA Intellect</i> software and controller
Check state	Check state of the controller

Controlling NCG-9 relay

Controlling *NCG-9* relay is carried out in **Map** interactive box using feature menu of **PGM NCG-9** object.



Note.

To open a functional menu of the object, click the right mouse button on this object.

Controlling *PGM NCG-9*:

Menu command	Description
Turn off	Disable the <i>NCG-9</i> relay
Turn on	Enable the <i>NCG-9</i> relay