



Intellect

Polon Alfa Integration Module Configuration
and Operation Manual

1. Introduction into Polon Alfa Integration Module Configuration and Operation Manual	3
3	
2. Configuring Polon Alfa integration module	3
2.1 Configuration procedure for Polon Alfa integration module	3
2.2 Configuring connection of Polon Alfa FAS to ACFA Intellect	3
2.3 Creating objects for Polon Alfa FAS devices	4

Introduction into Polon Alfa Integration Module Configuration and Operation Manual

On the page:

- Purpose of the Document
- General information about Polon Alfa integration module

Purpose of the Document

Configuration and operation manual for Polon Alfa integration module is a reference and information guide meant for *Polon Alfa* configuration specialists and operators. This module is a part of *ACFA Intellect* software package.

The guide provides:

1. general information about *Polon Alfa* module;
2. information about how to configure *Polon Alfa* module;
3. information about how to use *Polon Alfa* module.

General information about Polon Alfa integration module

Polon Alfa integration module is the *ACFA Intellect* component. It controls and manages *Polon Alfa FAS* devices. *Polon Alfa FAS* devices cannot be configured in *ACFA Intellect*.

Before you start using *Polon Alfa* integration module, install *Polon Alfa FAS* hardware on the object under security surveillance and configure the system in the vendor's software.



Note.

For more information about *Polon Alfa ACS*, please refer to official documentation for this system (manufactured by Polon-Alfa Spółka z ograniczoną odpowiedzialnością Sp.k.).

Configuring Polon Alfa integration module

Configuration procedure for Polon Alfa integration module

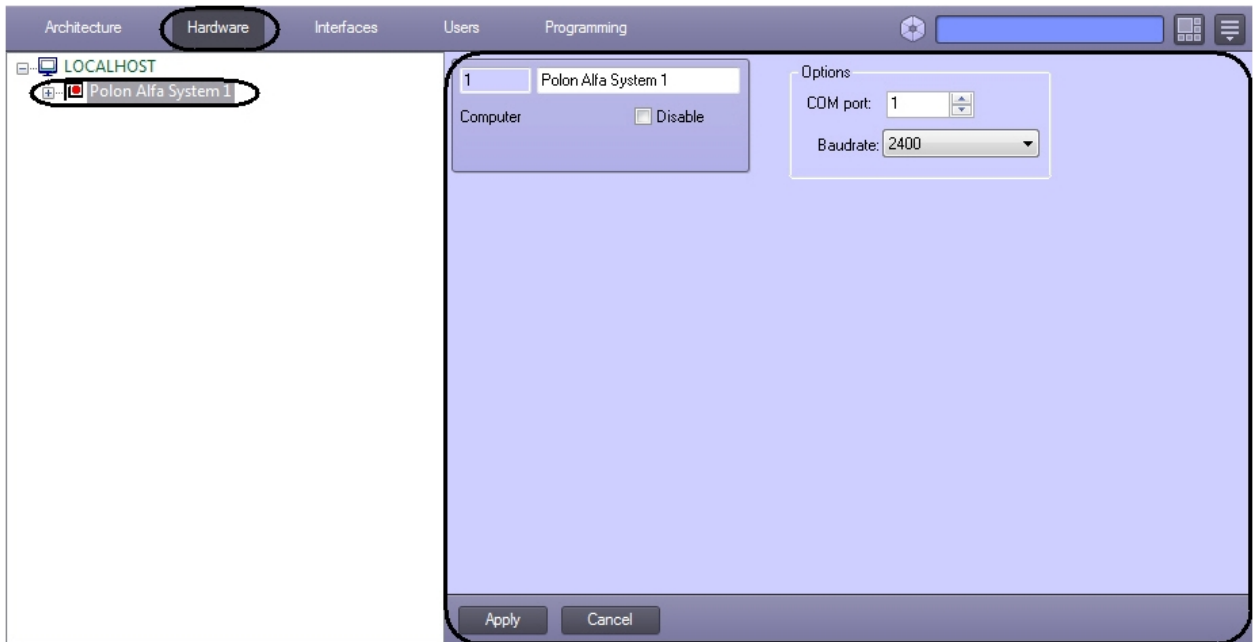
Here is the configuration procedure for *Polon Alfa* integration module:

1. [Configure connection of Polon Alfa FAS to ACFA Intellect.](#)
2. [Create objects for Polon Alfa FAS devices.](#)

Configuring connection of Polon Alfa FAS to ACFA Intellect

Connection of *Polon Alfa FAS* to *ACFA Intellect* is configured as follows:

1. Create the **Polon Alfa System** object under the **LOCALHOST** object in the **Hardware** tab of the **System settings** dialog box.



2. Set the following connection parameters on the settings panel of the **Polon Alfa System** object:
 - a. Specify the number of *ACFA Intellect* Server port in the **COM port:** field (1).



- b. Select the connection speed of controller in the **Baudrate:** dropdown list (2).
 - c. Click the **Apply** button.

Connection of *Polon Alfa FAS* to *ACFA Intellect* is now configured.

Creating objects for Polon Alfa FAS devices

The following elements of *Polon Alfa FAS* are available in *ACFA Intellect*: controllers (**Polon 4500** and **Polon 4900** objects), TSRs (**TSR 4500** and **TSR 4900** objects), security zones (**Zones** object), lines (**Line 4500** and **Line 4900** objects), input and output relays (**Controllable inputs**, **Potential Outputs** and **Relay Outputs** objects).

The **Polon 4500** and **Polon 4900** objects are created under the **Polon Alfa System** object. **TSR 4500**, **Zones**, **Line 4500**, **Controllable inputs**, **Potential Outputs**, **Relay Outputs** objects are created under the **Polon 4500** object. **Addressable detector 4500**, **Element EKS 4500**, **Element EWK 4500**, **Element EWS 4500**, **Element ROP 4500**, **Element SAL 4500**, **Element UCS 4500** objects are created under the **Line 4500** object. **EWK Input 4500** object is created under the **Element EWK 4500** object. **EWS Output 4500** object is created under the **Element EWS 4500** object. **UCS Output 4500** object is created under the **Element UCS 4500** object.



Note.

The same object tree is created under the **Polon 4900** object.

