



Satel Integration Module Settings Guide

Last update 07/10/2022

Table of contents

1	List of Terms Used in Satel Integration Module Settings Guide	3
2	Introduction into Satel Integration Module Settings Guide	4
2.1	Purpose of the document.....	4
2.2	General information about the Satel integration module.....	4
3	Supported hardware and licensing of the Satel integration module.....	5
4	Configuration of the Satel integration module	6
4.1	How to configure the Satel integration module.....	6
4.2	Configuration of the Satel FSA connection.....	6
4.3	Configuration of the Satel SFA devices.....	7
5	Working with the Satel integration module	8
5.1	General information about working with the Satel Module	8
5.2	Managing the Satel SFA	8
5.3	Managing the Satel Zone	8
5.4	Managing the Satel Relay	8
5.5	Managing the Satel Partition	9

1 List of Terms Used in Satel Integration Module Settings Guide

Server - a computer configured as an *Intellect* Software System **Server**.

LCD manipulator – manipulator with LCD text display (2x16 symbols).

Central cooling machine – device designed for controlling working of alarm systems which perform monitoring for complex security of medium and large objects.

2 Introduction into Satel Integration Module Settings Guide

On the page:

- [Purpose of the document](#)
- [General information about the Satel integration module](#)

2.1 Purpose of the document

This *Satel Module Settings Guide* is a reference manual designed for *Satel* Module configuration technicians and operators. This module functions as part of security- and fire alarm systems built on the basis of the *ACFA Intellect* Software System.

This Guide presents the following materials:

1. General information about the *Satel* integration module;
2. Configuration of the *Satel* integration module;
3. Working with the *Satel* integration module.

2.2 General information about the *Satel* integration module

The *Satel* integration module is part of *SFA* systems built based on the *ACFA Intellect* Software System. It is designed to control the *Satel SFA* system.

Note.

Detailed information about the *Satel SFA* system can be found in the official documentation (manufacturer Satel).

Before configuring the *Satel* integration module, the following actions must be performed:

1. Install the required hardware on the secured object.
2. Connect the *Satel SFA* to the Server.

Note.

RS232 interface is used to connect device to computer. Ensure the corresponding drivers are installed on the Server.

3 Supported hardware and licensing of the Satel integration module

Manufacturer	SATEL ul. Schuberta 79 80-172 Gdansk, Poland tel. +48 58 320-94-00 fax +48 58 320-94-01 e-mail: satel@satel.pl www.satel.pl
Integration type	Low-level protocol
Equipment connection	RS-232

Supported equipment

Equipment	Function	Features
INTEGRA 128	Advanced control panel	16 up to 128 zones 32 partitions 8 objects 16 up to 128 programmable outputs 64 timers 249 users Event log: 22,527 RS-232 port
INTEGRA 64	Advanced control panel	16 up to 64 zones 32 partitions 8 objects 16 up to 64 programmable outputs 64 timers 201users Event log: 5,887 RS-232 port
CA-64	Zone expansion module	8 zones
CA-640	Output expansion module	8 relays

Protection

Any one panel.

4 Configuration of the Satel integration module

4.1 How to configure the Satel integration module

The *Satel* integration module in the *ACFA Intellect* Software System is configured as follows:

1. Configuration of the *Satel SFA* connection.
2. Configuration of *Satel SFA* devices.

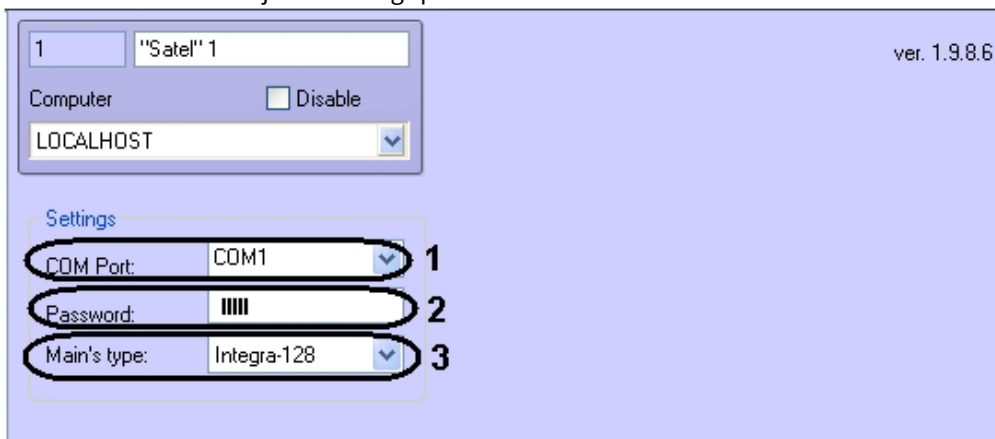
4.2 Configuration of the Satel FSA connection

Configuring the *Satel SFA* connection is performed on the settings panel of the **Satel SFA** object. The objects must be created based on the **Computer** object on the **Hardware** tab of the **System Settings** dialog.



To configure the *Satel SFA* devices connection, do the following:

1. Go to the **Satel SFA** object's settings panel.



2. From the **COM Port:** drop-down list select the COM port to which the *Satel* control panel (1).
3. In the **Password:** field enter the password to connect the *ACFA Intellect* software package with the LCD manipulator (2).
4. From the **Main's type:** drop-down list select the type of connected control panel (central cooling machine) (3).

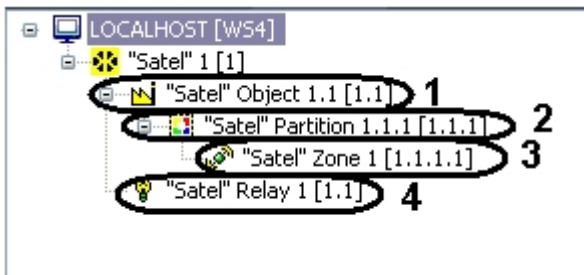
5. Create the **Satel Object** on the basis of the **Satel** object.
6. Click the **Apply** button.

Configuring connection of the *Satel* devices is completed.

4.3 Configuration of the Satel SFA devices

To configure the *Satel SFA* devices on the basis of **Satel** object create the following objects corresponding to the *Satel* configuration:

1. Create the **“Satel” Object** object (1).
2. On the basis of the **“Satel” Object** object create the **“Satel” Partition** object (2).
3. On the basis of the **“Satel” Partition** object create the **“Satel” Zone** object (3).
4. On the basis of the **Satel** object create the **“Satel” Relay** object (4).



After creating objects described below the *Satel* integration module provides receiving and registering messages from the **“Satel” Relay**, **“Satel” Partition** and **“Satel” Zone** objects.

Configuring the *Satel* devices is completed.

5 Working with the Satel integration module

5.1 General information about working with the Satel Module

The following interface objects are used to work with the *Satel* integration module:

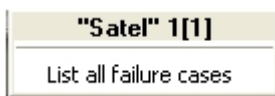
1. **Map.**
2. **Event Log.**

Information about configuring these interface objects is presented in the [Intellect Software Package: Administrator's Guide](#).

For detailed information on how to work with GUI objects, refer to the [Intellect Software Package: Operator's Guide](#).

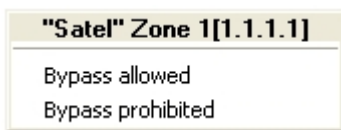
5.2 Managing the Satel SFA

The *Satel SFA* device is managed in the **Map** interactive window using the corresponding object's menu. To receive all failure cases in the *Satel SFA* select **List all failure cases** in the **Satel** object's menu.



5.3 Managing the Satel Zone

The *Satel* zone is managed in the **Map** interactive window using the **Satel Zone** object's menu.

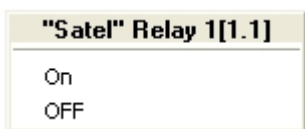


Description of the **Satel Zone** object's menu commands is given in the table.

Menu command	Function
Bypass allowed	Allow zone bypass
Bypass prohibited	Prohibit zone bypass

5.4 Managing the Satel Relay

The *Satel* relay is managed in the **Map** interactive window using the **Satel Relay** object's menu.

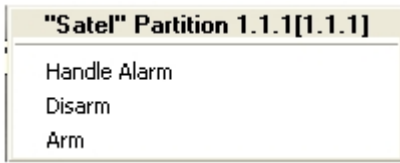


Description of the **Satel Relay** object's menu commands is given in the table.

Menu command	Function
On	Turn on relay
Off	Turn off relay

5.5 Managing the Satel Partition

The *Satel* partition is managed in the **Map** interactive window using the **Satel Partition** object's menu.



Description of the Satel Partition object's menu commands is given in the table.

Menu command	Function
Handle Alarm	Handle the alarm signal
Disarm	Disarm partition
Arm	Arm partition