



Intellect

Satel Integration Module Settings Guide

1. List of Terms Used in Satel Integration Module Settings Guide	3
2. Introduction into Satel Integration Module Settings Guide	3
3. Configuration of the Satel integration module	3
3.1 How to configure the Satel integration module	3
3.2 Configuration of the Satel FSA connection	3
3.3 Configuration of the Satel SFA devices	4
4. Working with the Satel integration module	5
4.1 General information about working with the Satel Module	5
4.2 Managing the Satel SFA	5
4.3 Managing the Satel Zone	5
4.4 Managing the Satel Relay	5
4.5 Managing the Satel Partition	5

List of Terms Used in Satel Integration Module Settings Guide

Server - a computer configured as an *Intellect* Software System **Server**.

LCD manipulator – manipulator with LCD text display (2x16 symbols).

Central cooling machine – device designed for controlling working of alarm systems which perform monitoring for complex security of medium and large objects.

Introduction into Satel Integration Module Settings Guide

On the page:

- [Purpose of the document](#)
- [General information about the Satel integration module](#)

Purpose of the document

This *Satel Module Settings Guide* is a reference manual designed for *Satel* Module configuration technicians and operators. This module functions as part of security- and fire alarm systems built on the basis of the *ACFA Intellect* Software System.

This Guide presents the following materials:

1. General information about the *Satel* integration module;
2. Configuration of the *Satel* integration module;
3. Working with the *Satel* integration module.

General information about the *Satel* integration module

The *Satel* integration module is part of *SFA* systems built based on the *ACFA Intellect* Software System. It is designed to control the *Satel SFA* system.



Note.

Detailed information about the *Satel SFA* system can be found in the official documentation (manufacturer Satel).

Before configuring the *Satel* integration module, the following actions must be performed:

1. Install the required hardware on the secured object.
2. Connect the *Satel SFA* to the Server.



Note.

RS232 interface is used to connect device to computer. Ensure the corresponding drivers are installed on the Server.

Configuration of the Satel integration module

How to configure the Satel integration module

The *Satel* integration module in the *ACFA Intellect* Software System is configured as follows:

1. [Configuration of the *Satel SFA* connection.](#)
2. [Configuration of *Satel SFA* devices.](#)

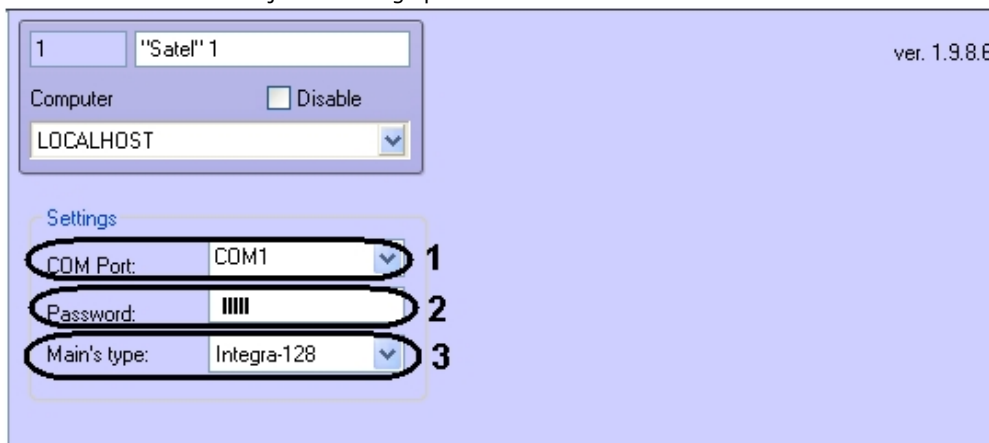
Configuration of the Satel SFA connection

Configuring the *Satel SFA* connection is performed on the settings panel of the **Satel SFA** object. The objects must be created based on the **Computer** object on the **Hardware** tab of the **System Settings** dialog.



To configure the *Satel* SFA devices connection, do the following:

1. Go to the **Satel SFA** object's settings panel.



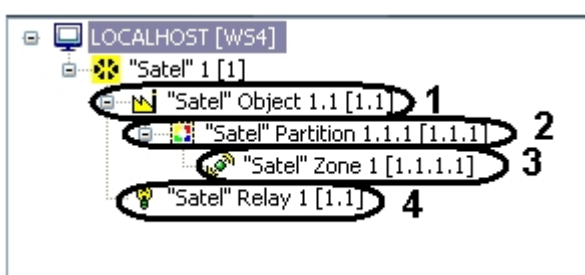
2. From the **COM Port:** drop-down list select the COM port to which the *Satel* control panel (1).
3. In the **Password:** field enter the password to connect the *ACFA Intellect* software package with the LCD manipulator (2).
4. From the **Main's type:** drop-down list select the type of connected control panel (central cooling machine) (3).
5. Create the **Satel Object** on the basis of the **Satel** object.
6. Click the **Apply** button.

Configuring connection of the *Satel* devices is completed.

Configuration of the Satel SFA devices

To configure the *Satel* SFA devices on the basis of **Satel** object create the following objects corresponding to the *Satel* configuration:

1. Create the **"Satel" Object** object (1).
2. On the basis of the **"Satel" Object** object create the **"Satel" Partition** object (2).
3. On the basis of the **"Satel" Partition** object create the **"Satel" Zone** object (3).
4. On the basis of the **Satel** object create the **"Satel" Relay** object (4).



After creating objects described below the *Satel* integration module provides receiving and registering messages from the “**Satel” Relay**, “**Satel” Partition** and “**Satel” Zone** objects.

Configuring the *Satel* devices is completed.

Working with the Satel integration module

General information about working with the Satel Module

The following interface objects are used to work with the *Satel* integration module:

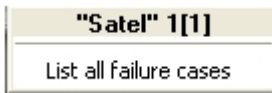
1. **Map**;
2. **Event Log**.

Information about configuring these interface objects is presented in the [Intellect Software Package: Administrator's Guide](#).

For detailed information on how to work with GUI objects, refer to the [Intellect Software Package: Operator's Guide](#).

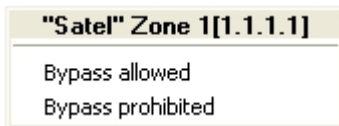
Managing the Satel SFA

The *Satel SFA* device is managed in the **Map** interactive window using the corresponding object's menu. To receive all failure cases in the *Satel SFA* select **List all failure cases** in the **Satel** object's menu.



Managing the Satel Zone

The *Satel* zone is managed in the **Map** interactive window using the **Satel Zone** object's menu.



Description of the **Satel Zone** object's menu commands is given in the table.

Menu command	Function
Bypass allowed	Allow zone bypass
Bypass prohibited	Prohibit zone bypass

Managing the Satel Relay

The *Satel* relay is managed in the **Map** interactive window using the **Satel Relay** object's menu.

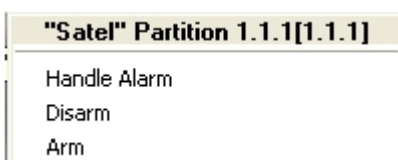


Description of the **Satel Relay** object's menu commands is given in the table.

Menu command	Function
On	Turn on relay
Off	Turn off relay

Managing the Satel Partition

The *Satel* partition is managed in the **Map** interactive window using the **Satel Partition** object's menu.



Description of the Satel Partition object's menu commands is given in the table.

Menu command	Function
Handle Alarm	Handle the alarm signal
Disarm	Disarm partition
Arm	Arm partition