



# Intellect

Soyal Integration Module Settings Guide

1. Introduction into Soyal Integration Module Settings Guide	3
2. Configuration of the Soyal integration module	3
2.1 Soyal integration module set up procedure	3
2.2 Activation of Soyal ACS integration module	3
2.3 Configuration of Soyal converter	4
2.4 Configuration of the AR-716 controller	5
2.4.1 Managing the configuration of a AR-716 controller	5
2.4.2 Configure the connection of AR-716 controller	6
2.4.3 Configuring the AR-716 controller parameters	6
2.4.4 Configuration of AR-716 Door object	7
2.4.5 Configuration of the AR-716 Group	8
2.4.6 Configuration of the AR-716 Relay	9
2.5 Configuration of the AR-721 controller	10
2.5.1 Managing the configuration of a AR-721 controller	10
2.5.2 Configure the connection of AR-721 controller	11
2.5.3 Configuring the AR-721 controller parameters	11
2.6 Configuration of the AR-725 controller	13
2.6.1 Managing the configuration of a AR-725 controller	13
2.6.2 Configure the connection of AR-725 controller	14
2.6.3 Configuring the AR-725 controller parameters	14
2.7 Configuration of the AR-727 controller	15
2.7.1 Managing the configuration of a AR-727 controller	16
2.7.2 Configure the connection of AR-727 controller	16
2.7.3 Configuring the AR-727 controller parameters	16
2.8 Configuration of the AR-716E network controller	17
2.8.1 Configure the connection of AR-716E network controller	18
2.8.2 Configuration of AR-716E Door object	18
2.8.3 Configuration of the AR-716E Group	19
2.8.4 Configuration of the AR-716E Relay	20
2.8.5 Configuration of the AR-716E Input	21
2.9 Configuration of the AR-725E network controller	22
2.9.1 Configure the connection of AR-725E network controller	22
2.10 Granting the access in the ACFA Intellect software	23
3. Working with the Soyal integration module	23
3.1 General information about working with the Soyal Module	23
3.2 Managing an AR-725 controller	24
3.3 Managing AR-727 and AR-721 controllers	24
3.4 Managing AR-716 and AR-716E relays	25

# Introduction into Soyal Integration Module Settings Guide

## On the page:

- Purpose of the document
- General information about the Soyal integration module

## Purpose of the document

This *Soyal Module Settings Guide* is a reference manual designed for *Soyal* Module configuration technicians and operators. This module functions as part of security- and fire alarm systems and access control systems built on the basis of the *ACFA Intellect* Software System.

This Guide presents the following materials:

1. General information about the *Soyal* integration module;
2. Configuration of the *Soyal* integration module;
3. Working with the *Soyal* integration module.

## General information about the *Soyal* integration module

The *Soyal* integration module is part of *ACS* systems built based on the *ACFA Intellect* Software System. It is designed for following functions:

1. *Soyal ACS* configuration (*Soyal Group LLC.* is a manufacturer).
2. Interaction of *Soyal ACS* with *ACFA Intellect* software package (monitoring, control).



### Note.

Detailed information about *Soyal ACS* is given in official reference documentation for this system.

The following hardware is integrated with the *ACFA Intellect* Software System:

1. AR-716 controller;
2. AR-721 controller;
3. AR-725 controller;
4. AR-727 controller;
5. AR-716E controller;
6. AR-725E controller.

Before setting up *Soyal* integration module do the following:

1. Install *Soyal ACS* hardware on secured object (see reference documentation for *Soyal ACS*).
2. Connect *Soyal ACS* to the *Intellect* Server (see reference documentation for *Soyal ACS*).

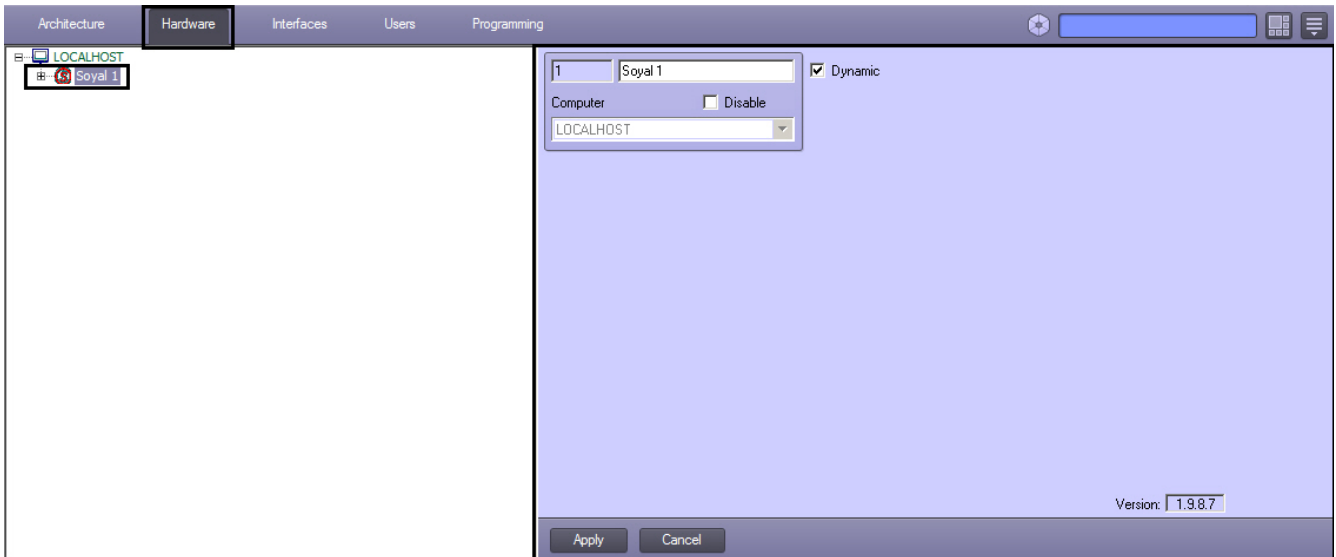
## Configuration of the *Soyal* integration module

### *Soyal* integration module set up procedure

1. Activate the *Soyal ACS* integration module.
2. Configure the *Soyal* converter.
3. Configure *Soyal* controllers.
4. Configure doors, groups and relay.

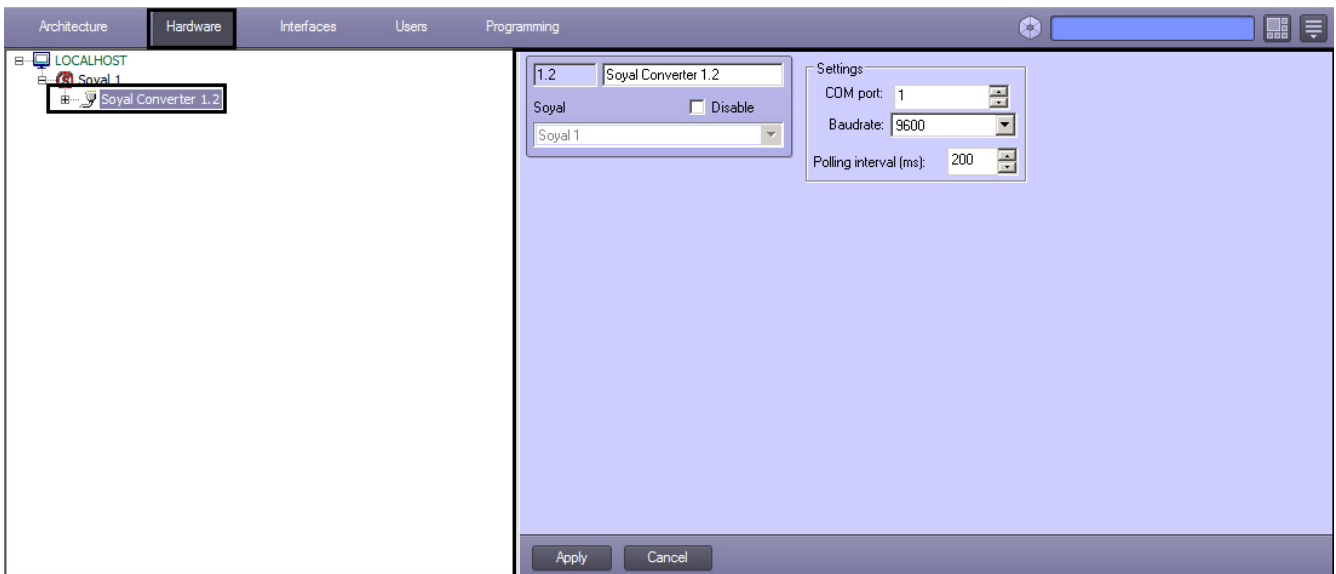
### Activation of *Soyal ACS* integration module

To activate the *Soyal ACS* integration module a **Soyal** object must be created based on the **Computer** object on the **Hardware tab** of the **System Settings** dialog.



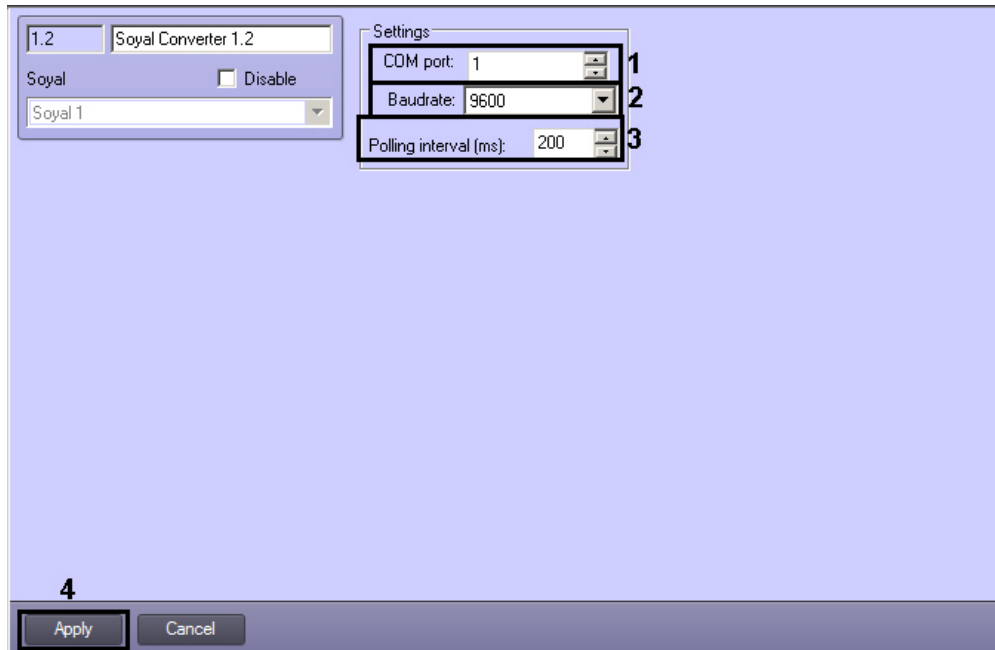
## Configuration of Soyal converter

The *Soyal* converter in the *ACFA Intellect* software is realized on the **Soyal Converter** object's settings panel. This object must be created based on the **Soyal** object on the **Hardware** tab of the **System Settings** dialog.



The *Soyal* converter is configured as follows:

1. Go to the **Soyal Converter** object's settings panel.

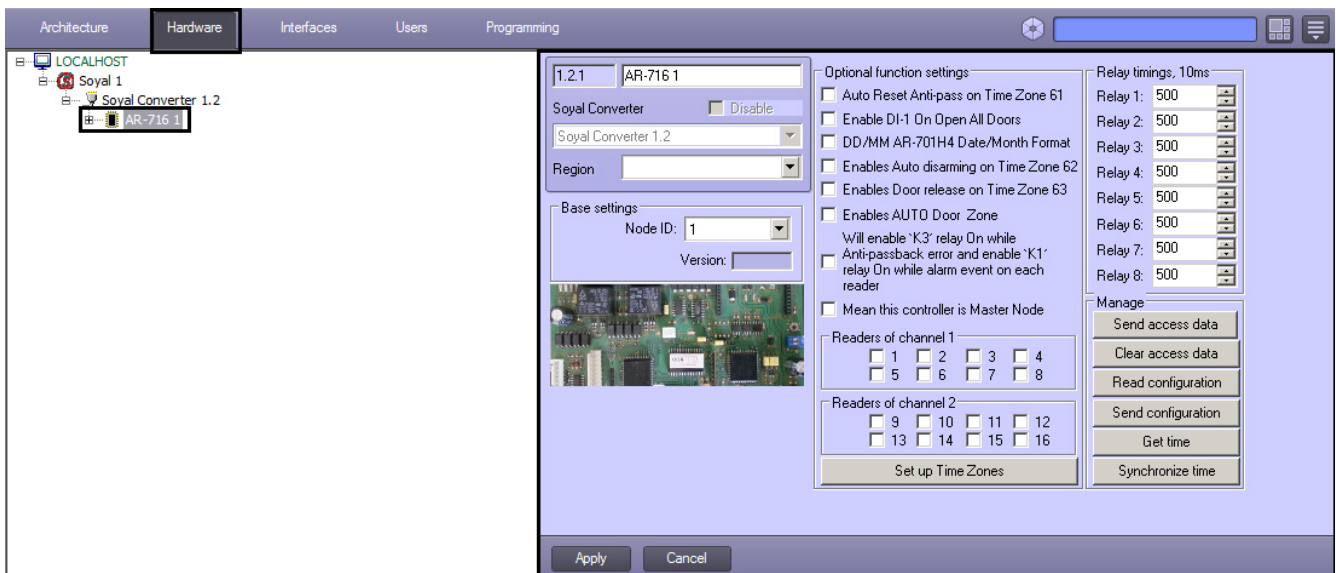


2. With the help of **up-down** buttons in the **COM port:** field set the number of the COM port used to connect controllers to the Server (**1**).
3. From the **Baudrate:** drop-down list select the speed of controller's COM-port connection (**2**).
4. With the help of **up-down** buttons in the **Polling interval (ms):** field set the interval of the COM-port polling in milliseconds (**3**).
5. To save changes click the **Apply** button (**4**).

This completes the configuration of the *Soyal* converter.

## Configuration of the AR-716 controller

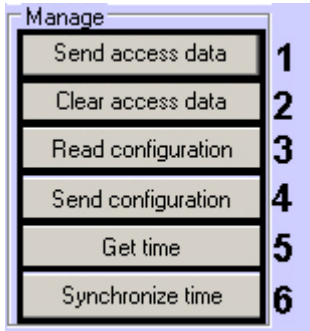
Configuration of *AR-716* controller is carried out on setting panel of **AR-716** object. This object is created on the basis of **Soyal Converter** object on **Hardware** tab of **System settings** dialog box.



## Managing the configuration of a AR-716 controller

For a *AR-716* controller, configuration management includes the following actions:

1. Forwarding data about user access cards from the Server *Intellect* to the controller. To perform this action click the **Send access data** button (**1**).

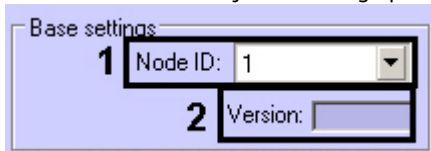


2. Clearing data about user access cards. To perform this action click the **Clear access data** button (2).
3. Reading configuration of the *AR-716* controller. To perform this action click the **Read configuration** button (3).
4. Forwarding configuration to the *AR-716* controller. Click the **Send configuration** button to perform the forwarding (4).
5. Getting time of the *AR-716* controller. To perform this action click the **Get time** button to perform the forwarding (5).
6. Forwarding time from the Server *Intellect* to the controller. To perform this action click the **Synchronize time** button to perform the forwarding (6).

## Configure the connection of AR-716 controller

To configure the connection of a *AR-716* controller, do the following:

1. Go to the **AR-716** object's settings panel.



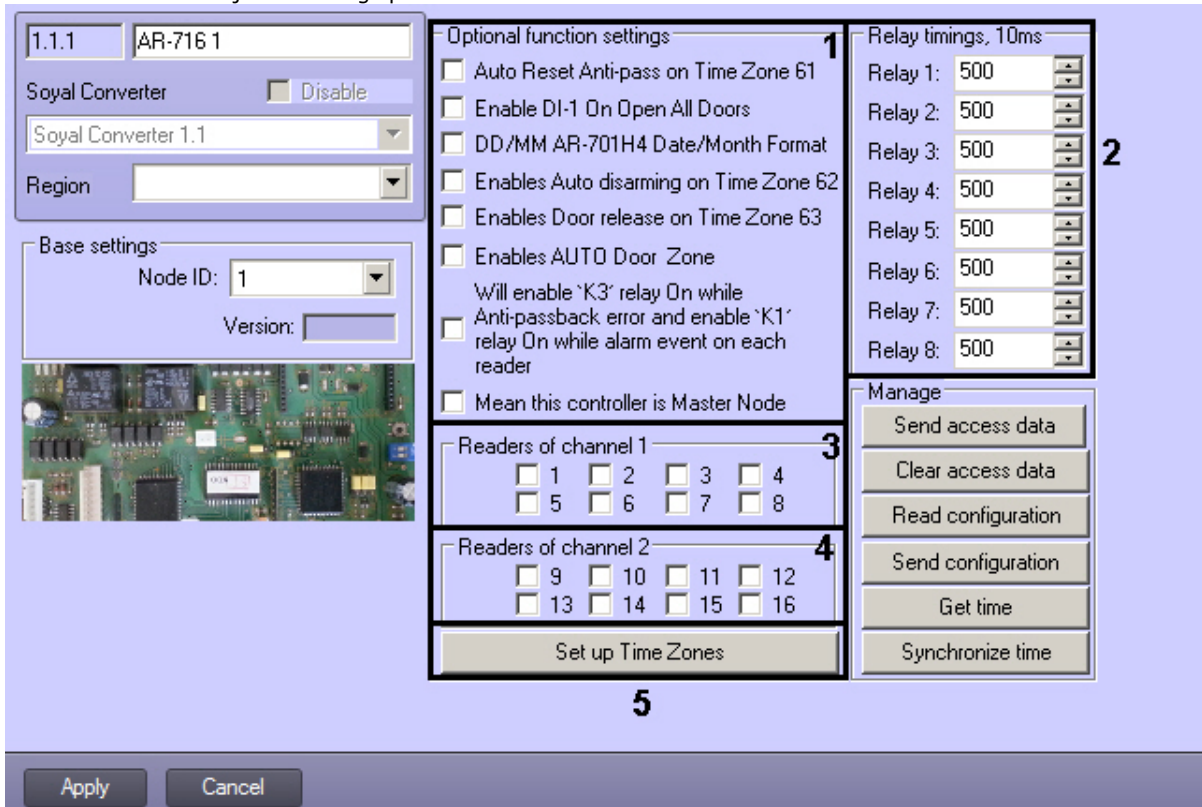
2. From the **Node ID** drop-down list select the ID of *Soyal AR-716* controller (1).
3. The version of connected device is displayed in the **Version** field (2).
4. Click **Apply**.

Connection of the *AR-716* controller is completed.

## Configuring the AR-716 controller parameters

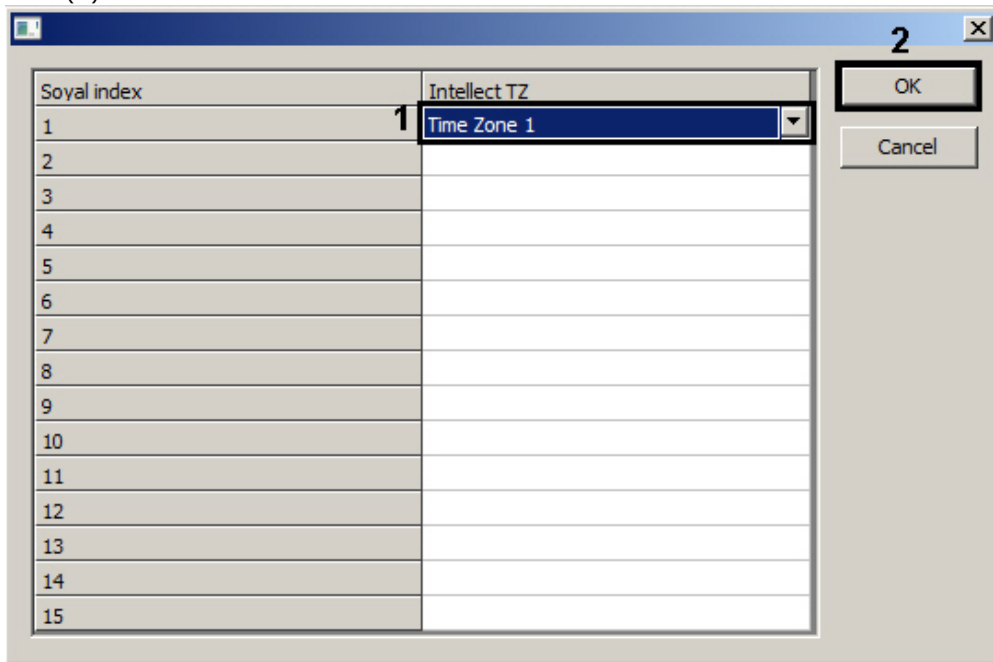
To configure the *AR-716* controller, do the following:

1. Go to the **AR-716** object's settings panel.



2. In the **Optional function settings** section select the needed function settings checkboxes (1). Descriptions of all function settings of the *AR-716* controller see in the vendor documentation.

3. In the **Relay timings, 10ms** section enter the time of relay activation (default time is 5 sec.) (2).
4. In the **Readers of channel 1** section select those door readers which are connected to the Channel 1 (3).
5. In the **Readers of channel 2** section select those door readers which are connected to the Channel 2 (4).
6. Click **Set up Time Zones** to configure the matching between time zones of device and time zones of Intellect Server (5).
  - a. In the **Intellect TZ** column select the time zone in *ACFA Intellect* corresponding to the time zone of *Soyal* device (1).



- b. Click **OK** to confirm changes (2).
7. Click the **Apply** button.

Configuring parameters of the *AR-716* controller is completed.

## Configuration of AR-716 Door object

Configuration of **AR-716 Door** object is carried out on setting panel of corresponding object. This object is created on the basis of **AR-716** object on **Hardware** tab of **System settings** dialog box.



To configure the *AR-716 door* do the following:

1. Go to the **AR-716 Door** object's settings panel.

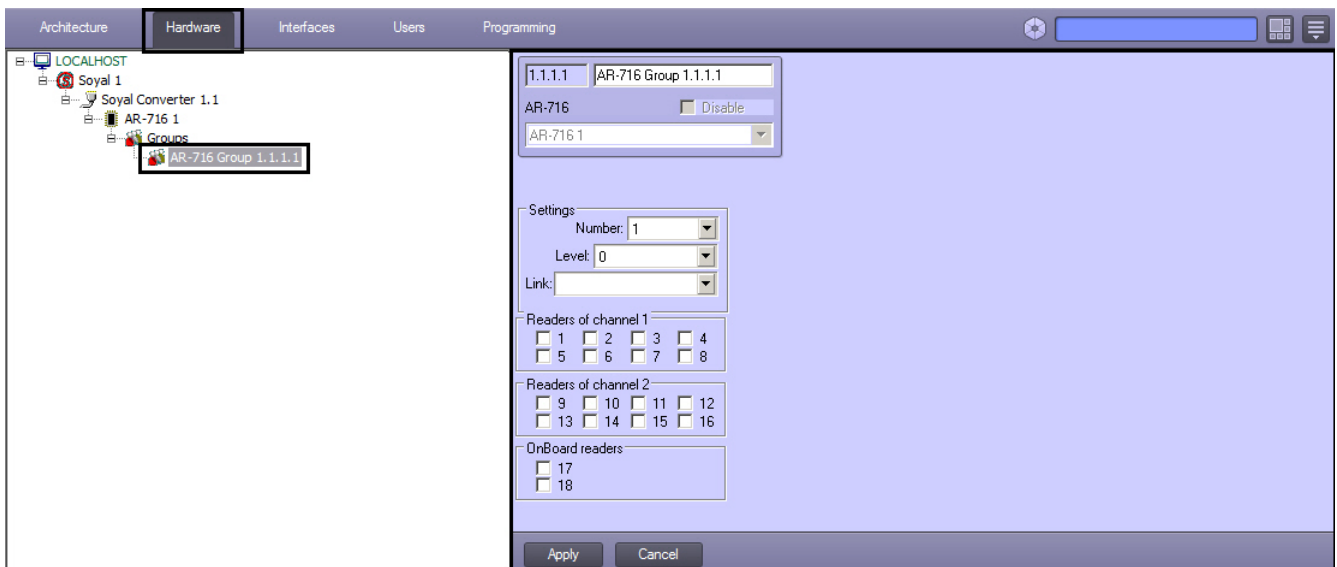


2. From the **Node ID** drop-down list select the ID of **AR-716 Door** object (1).
3. From the **Region In** drop-down list select the **Area** located in the site of exit through this reader (2).
4. From the **Region Out** drop-down list select the **Area** located in the site of entry through this reader (3).
5. To save changes, click the **Apply** button (4).

This completes the configuration of the **AR-716 Door** object.

## Configuration of the AR-716 Group

Configuration of **AR-716 Group** object is carried out on setting panel of corresponding object. This object is created on the basis of **AR-716** object on **Hardware** tab of **System settings** dialog box.



To configure the **AR-716 group** do the following:

1. Go to the **AR-716 Group** object's settings panel.

2. From the **Number** drop-down list select the number of *AR-716 Group* object (1).
3. From the **Level** drop-down list select the level of group priority (2).
4. From the **Link** drop-down list select the link on the related group (3).
5. In the **Readers of channel 1** section select those door readers which are connected to the Channel 1 (4).
6. In the **Readers of channel 2** section select those door readers which are connected to the Channel 2 (5).
7. In the **OnBoard readers** section select those WG readers which are connected to the controller (6).
8. To save changes, click the **Apply** button.

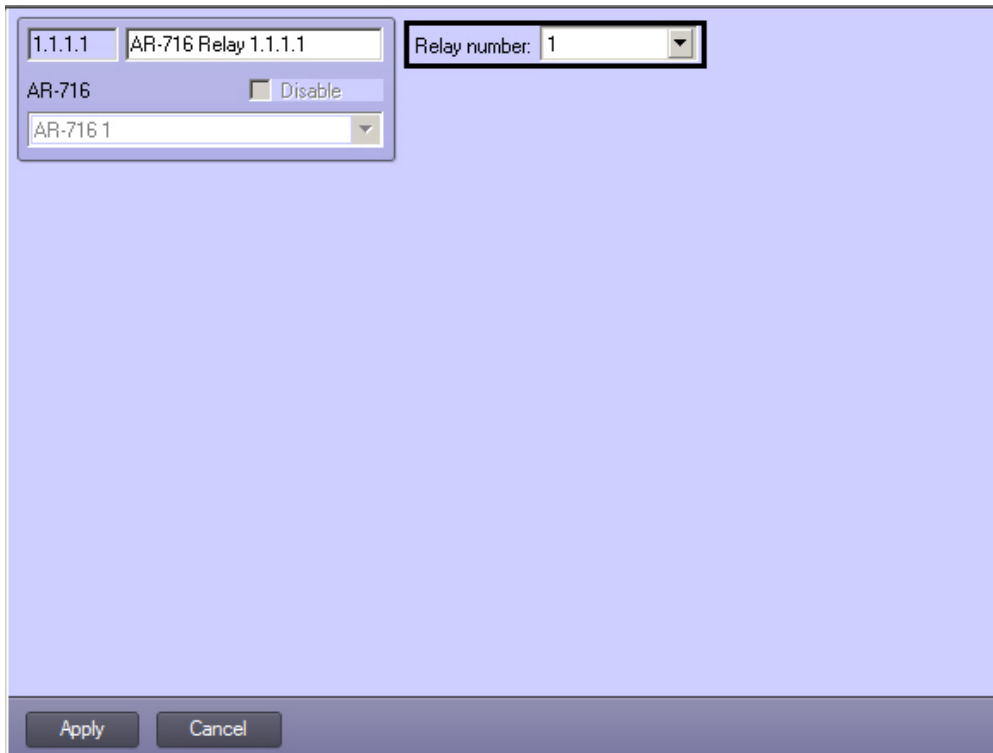
This completes the configuration of the *AR-716 Group* object.

## Configuration of the AR-716 Relay

Configuration of **AR-716 Relay** object is carried out on setting panel of corresponding object. This object is created on the basis of **AR-716** object on **Hardware** tab of **System settings** dialog box.

To configure the *AR-716 relay* do the following:

1. Go to the **AR-716 Relay** object's settings panel.

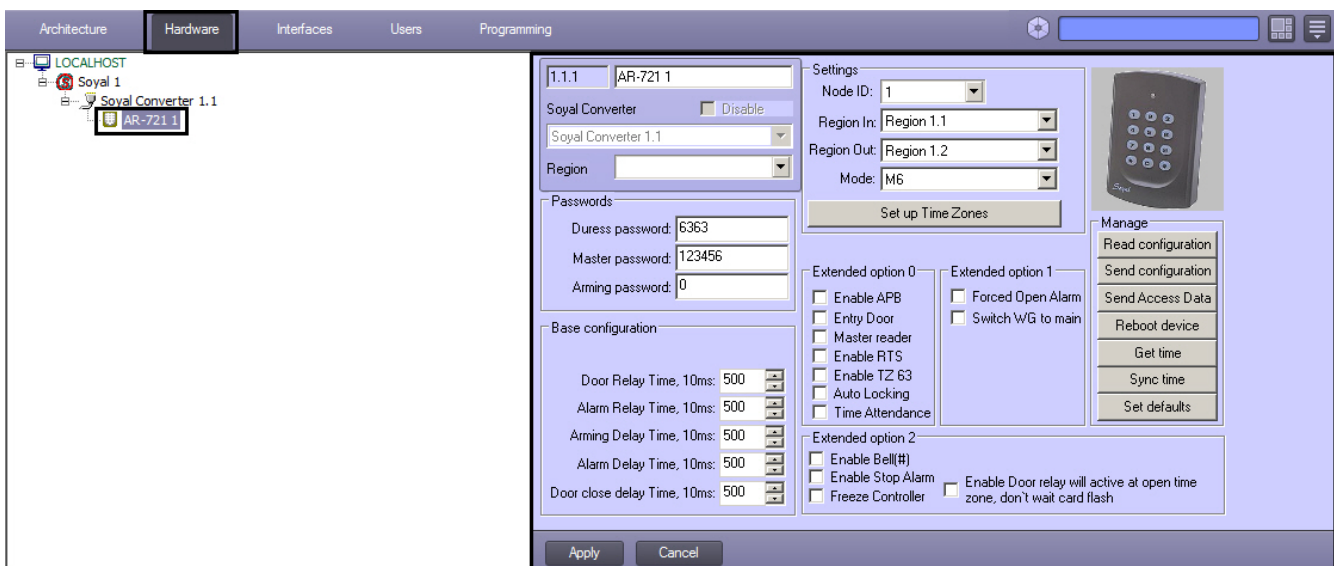


2. From the **Relay number** drop-down list select the number of *AR-716 Relay* object (1).
3. To save changes, click the **Apply** button.

This completes the configuration of the *AR-716 Relay* object.

## Configuration of the AR-721 controller

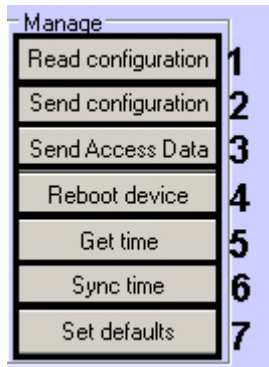
Configuration of *AR-721* controller is carried out on setting panel of corresponding object. This object is created on the basis of **Soyal Converter** object on **Hardware** tab of **System settings** dialog box.



## Managing the configuration of a AR-721 controller

For a *AR-721* controller, configuration management includes the following actions:

1. Reading configuration of the *AR-721* controller. To perform this action click the **Read configuration** button (1).

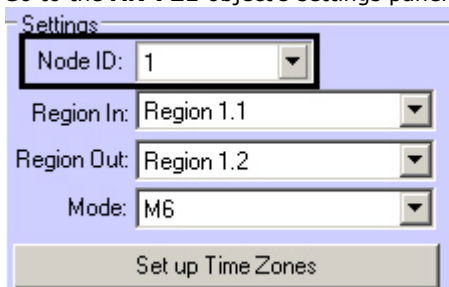


2. Forwarding configuration to the *AR-721* controller. To perform this action click the **Send configuration** button to perform the forwarding (2).
3. Forwarding data about user access cards from the *Server Intellect* to the controller. To perform this action click the **Send access data** button (3).
4. Restarting of the controller. To perform this action click the **Reboot device** button (4).
5. Getting time of the *AR-716* controller. To perform this action click the **Get time** button to perform the forwarding (5).
6. Forwarding time from the *Server Intellect* to the controller. To perform this action click the **Synchronize time** button to perform the forwarding (6).
7. Setting default controller parameters. To perform this action click the **Set defaults** button to perform the forwarding (7).

## Configure the connection of AR-721 controller

To configure the connection of a *AR-721* controller, do the following:

1. Go to the **AR-721** object's settings panel.



2. From the **Node ID** drop-down list select the ID of *Soyal AR-721* controller.
3. Click **Apply**.

Connection of the *AR-721* controller is completed.

## Configuring the AR-721 controller parameters

To configure the *AR-721* controller, do the following:

1. Go to the **AR-721** object's settings panel.

2. From the **Region In** drop-down list select the **Area** located in the site of entry through this reader (1).
3. From the **Region Out** drop-down list select the **Area** located in the site of exit through this reader (2).
4. From the **Mode** drop-down list select the required mode of the controller (3). The list of available modes is given in the table.

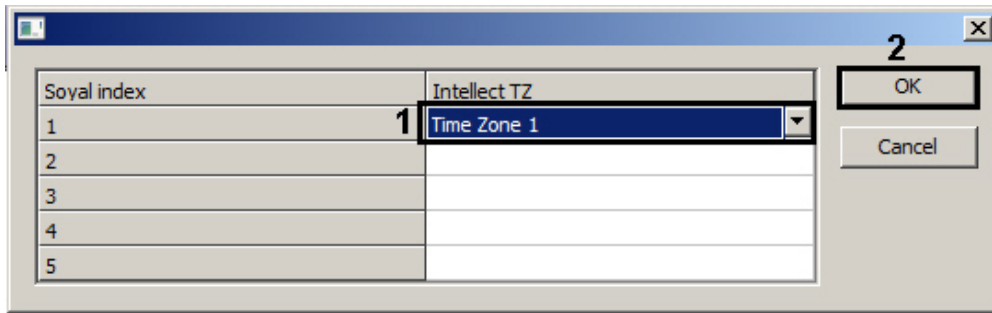
Mode	Networking/ Stand-Alone	User Capacity	Access Mode	Auto-show Duty time	Event log Capacity	120 Holidays	Anti force	Time Zone	Lift Control	Anti-pass-back
<b>M4</b>	Networking/ Stand-Alone	1,024/3,000 (725H)	1.Card only.  2.Card and PIN (4-digit PIN) + #.  3.Card or User address (5-digit) + Individual PIN (4-digit individual PIN) + #.	Yes	1200/1500 (725H)/3000 (757H)	Yes	Yes	11	32	Yes
<b>M6</b>	Stand-Alone	65,535	1. Card only.  2. Card and PIN (4-digit public PIN=Arming PWD) + #.  3. Card or PIN (4-digit public PIN=Duess code).	No	No	No	No	No	No	No
<b>M8</b>	Networking/ Stand-Alone	1,024/3,000 (725H)	1.Card only.  2.Card and PIN (4-digit individual PIN) + #.  3.Card or PIN (4-digit individual PIN).	Yes	1200/1500 (725H)/3000 (757H)	Yes	Yes	11	32	Yes



**Attention!**

The connection between the AR-721 controller and the *ACFA Intellect* software will not be established while the M6 mode selected.

5. Click **Set up Time Zones** to configure the matching between time zones of device and time zones of Intellect Server (4).
  - a. In the **Intellect TZ** column select the time zone in *ACFA Intellect* corresponding to the time zone of *Soyal* device (1).

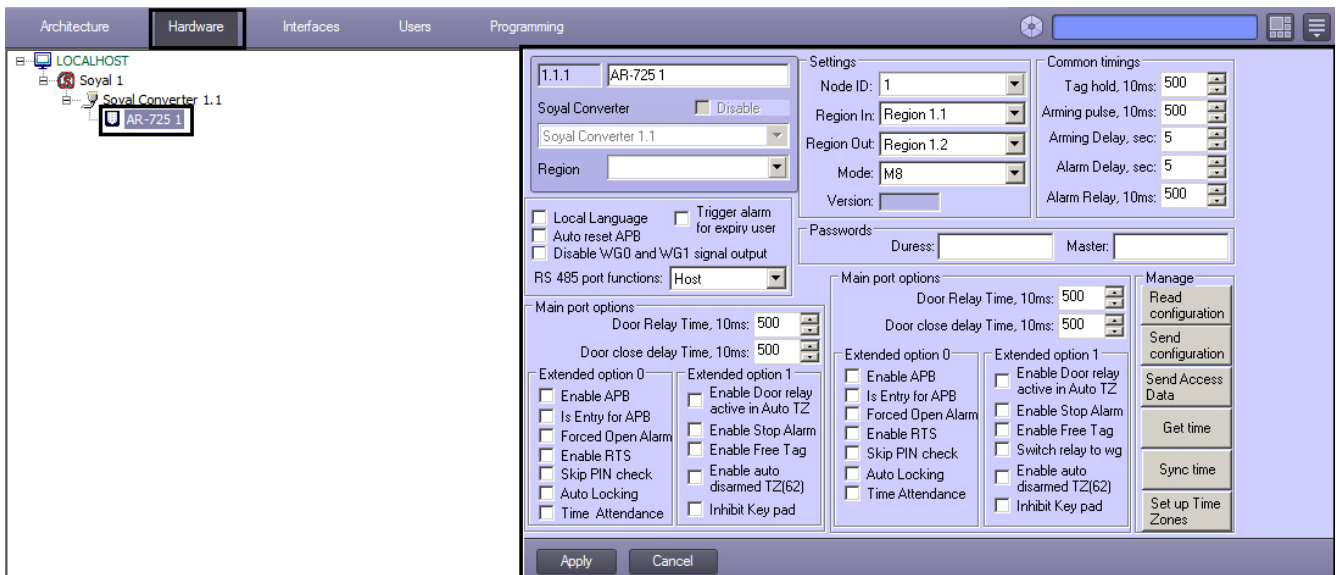


- b. Click **OK** to confirm changes (2).
6. In the **Duress password** field enter the code which is using when the computer opens door and at the same time sends a message for help (5).
7. In the **Master password** field enter the code which allows programming device (6).
8. In the **Arming password** field enter the code for arming (7).
9. In the **Base configuration** section enter the time of relay activation and delay time (4).
10. In the **Extended option** sections select the needed function settings checkboxes (5). Descriptions of all options see in the vendor documentation.
11. Click the **Apply** button.

Configuring parameters of the AR-721 controller is completed.

## Configuration of the AR-725 controller

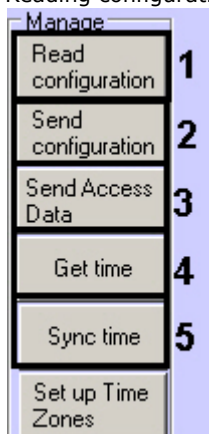
Configuration of AR-725 controller is carried out on setting panel of corresponding object. This object is created on the basis of **Soyal Converter** object on **Hardware** tab of **System settings** dialog box.



## Managing the configuration of a AR-725 controller

For a AR-725 controller, configuration management includes the following actions:

1. Reading configuration of the AR-725 controller. To perform this action click the **Read configuration** button (1).



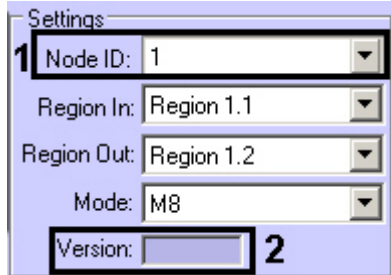
2. Forwarding configuration to the AR-725 controller. Click the **Send configuration** button to perform the forwarding (2).
3. Forwarding data about user access cards from the Server *Intellect* to the controller. To perform this action click the

- 3. **Send access data** button (3).
- 4. Getting time of the AR-725 controller. To perform this action click the **Get time** button to perform the forwarding (4).
- 5. Forwarding time from the Server *Intellect* to the controller. To perform this action click the **Synchronize time** button to perform the forwarding (5).

## Configure the connection of AR-725 controller

To configure the connection of a AR-725 controller, do the following:

1. Go to the **AR-725** object's settings panel.



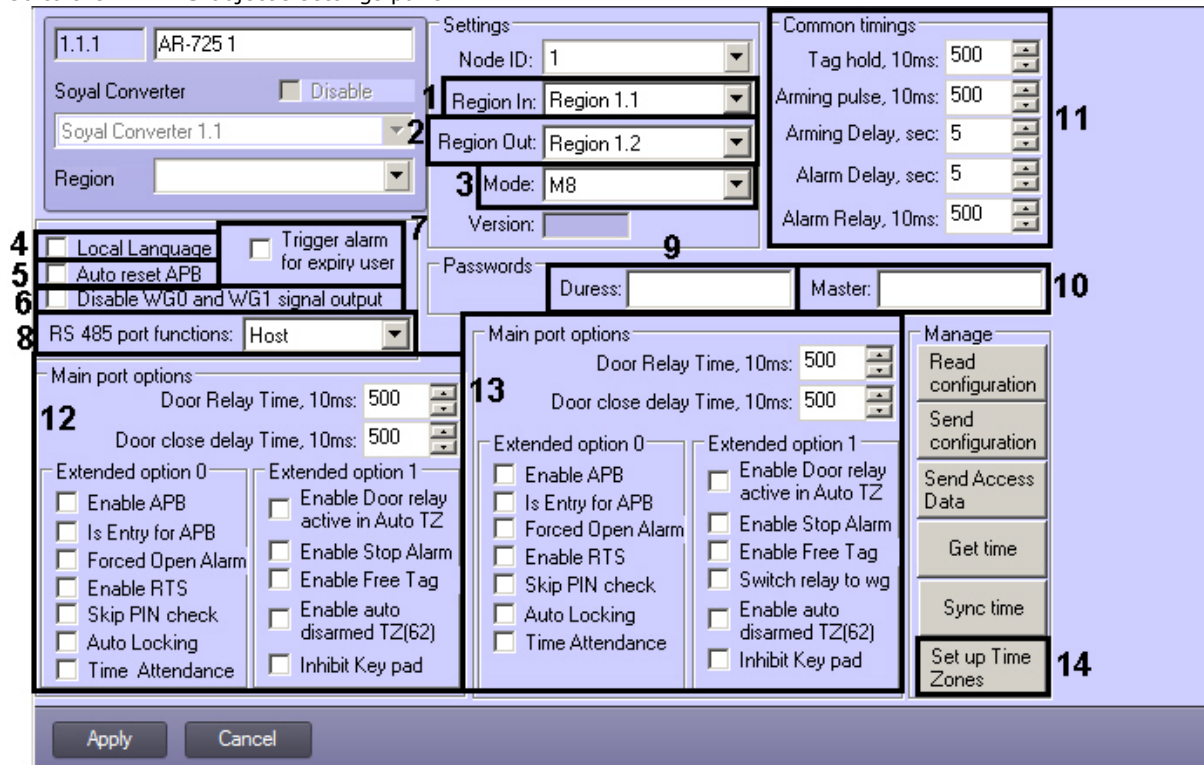
2. From the **Node ID** drop-down list select the ID of *Soyal AR-725* controller (1).
3. The version of connected device is displayed in the **Version** field (2).
4. Click **Apply**.

Connection of the AR-725 controller is completed.

## Configuring the AR-725 controller parameters

To configure the AR-725 controller, do the following:

1. Go to the **AR-725** object's settings panel.



2. From the **Region In** drop-down list select the **Area** located in the site of entry through this reader (1).
3. From the **Region Out** drop-down list select the **Area** located in the site of exit through this reader (2).
4. From the **Mode** drop-down list select the required mode of the controller (3). Possible modes are presented in the table.

Mode	Networking/ Stand-Alone	User Capacity	Access Mode	Auto-show Duty time	Event log Capacity	120 Holidays	Anti force	Time Zone	Lift Control	Anti-pass-back
M4	Networking/ Stand-Alone	1,024/3,000 (725H)	1.Card only. 2.Card and PIN (4-digit PIN)+#. 3.Card or User address (5-digit) + Individual PIN (4-digit individual PIN) + #.	Yes	1200/1500 (725H)/3000 (757H)	Yes	Yes	11	32	Yes

<b>M8</b>	Networking/ Stand-Alone	1,024/3,000 (725H)	1.Card only.  2.Card and PIN (4-digit individual PIN) + #.  3.Card or PIN (4-digit individual PIN).	Yes	1200/1500 (725H)/3000 (757H)	Yes	Yes	11	32	Yes
-----------	----------------------------	-----------------------	--	-----	------------------------------------	-----	-----	----	----	-----

5. Set the **Local language** checkbox to display information in the local language (4).
6. Set the **Auto reset APB** checkbox to enable the auto reset of anti-passback data (5).
7. Set the **Disable WG0 and WG1 signal output** checkbox to disable WG0 and WG1 outputs (6).
8. Set the **Trigger alarm for expiry user** checkbox to enable alarm for expiry user (7).
9. From the **RS 485 port functions** dropdown list select the type of communication through the RS 485 port (8).



**Attention!**

To connect the AR-725 controller with the *ACFA Intellect* software select «Host» value in the «RS 485 port functions» field (5).

10. In the **Duress:** field of **Passwords** section enter the code using which the computer opens door and at the same time sends a message for help (9).
11. In the **Master:** field of **Passwords** section enter the code which allows programming device (10).
12. In the **Common Timings** section enter the required value in the corresponding fields (11).
13. In the **Main port options** section specify the required settings of the main port of the controller (12).
14. In the **Main WG options** section specify the required settings of the WG reader (13).
15. Click **Set up Time Zones** to configure the matching between time zones of device and time zones of Intellect Server (14).
  - a. In the **Intellect TZ** column select the time zone in *ACFA Intellect* corresponding to the time zone of *Soyal d* evice (1).

Soyal index	Intellect TZ
1	Time Zone 1
2	
3	
4	
5	
6	
7	
8	
9	
10	
11	
12	
13	
14	
15	

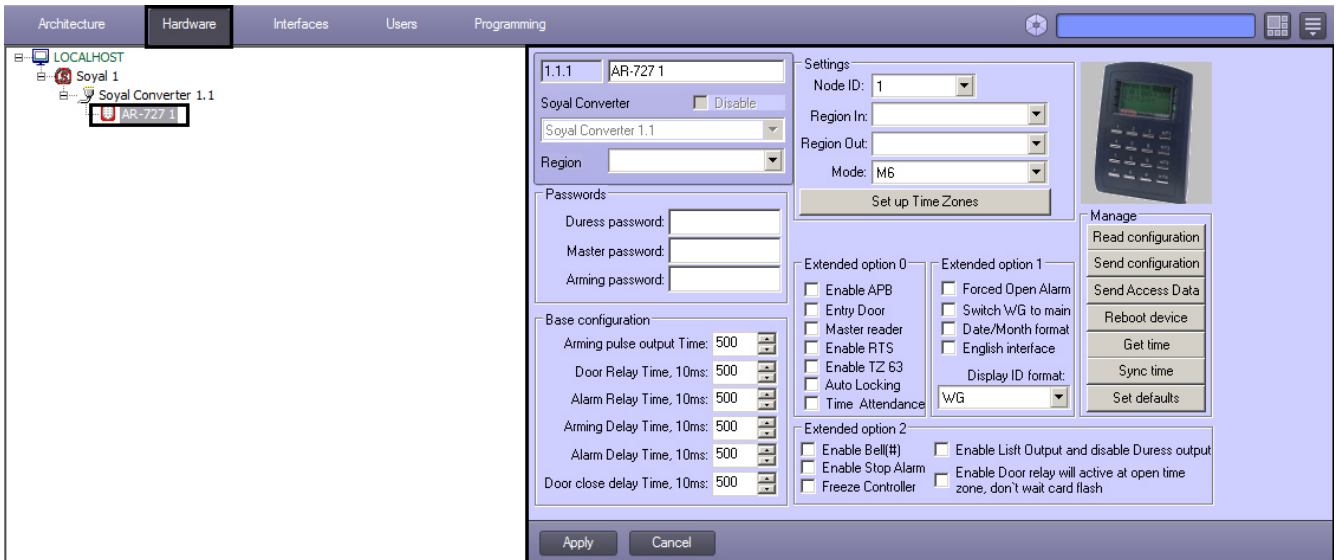
- b. Click **OK** to confirm changes (2).

16. Click the **Apply** button.

Configuring parameters of the AR-725 controller is completed.

## Configuration of the AR-727 controller

Configuration of AR-727 controller is carried out on setting panel of corresponding object. This object is created on the basis of **Soyal Converter** object on **Hardware** tab of **System settings** dialog box.



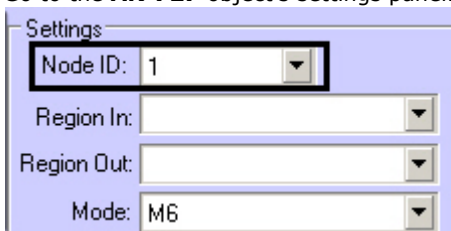
## Managing the configuration of a AR-727 controller

Managing the configuration of the AR-727 controller is the same as managing the configuration of the AR-721 controller (see the [Managing the configuration of a AR-721 controller](#) section).

### Configure the connection of AR-727 controller

To configure the connection of a AR-727 controller, do the following:

1. Go to the **AR-727** object's settings panel.



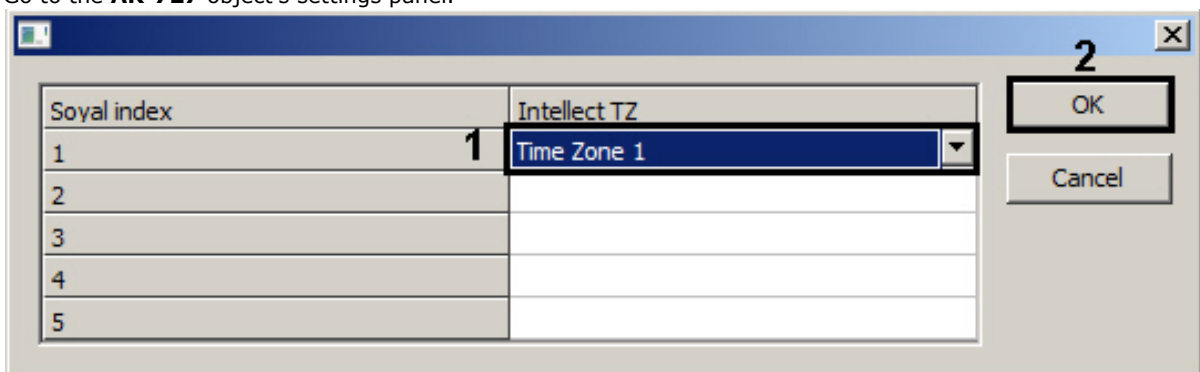
2. From the **Node ID** drop-down list select the ID of *Soyal AR-727* controller.
3. Click **Apply**.

Connection of the AR-727 controller is completed.

### Configuring the AR-727 controller parameters

To configure the AR-727 controller, do the following:

1. Go to the **AR-727** object's settings panel.



2. From the **Region In** drop-down list select the **Area** located in the site of exit through this reader (1).
3. From the **Region Out** drop-down list select the **Area** located in the site of entry through this reader (2).
4. From the **Mode** drop-down list select the required mode of the controller (3). Available modes are presented in the table.

Mode	Networking/ Stand-Alone	User Capacity	Access Mode	Auto-show Duty time	Event log Capacity	120 Holidays	Anti force	Time Zone	Lift Control	Anti-pass-back

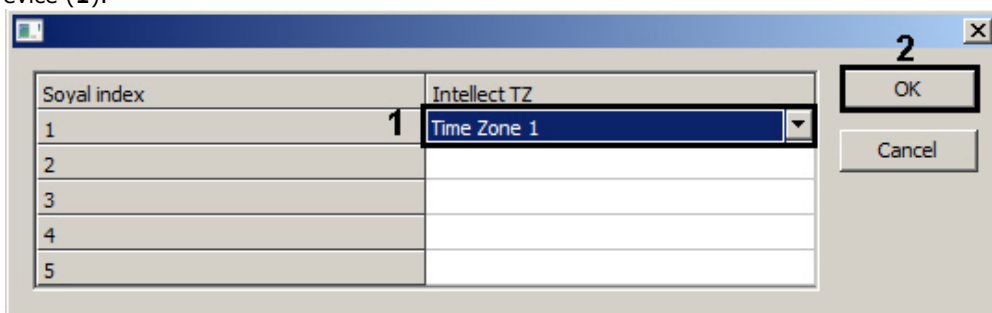
<b>M4</b>	Networking/ Stand-Alone	1,024/3,000 (725H)	1.Card only.  2.Card and PIN (4-digit PIN)+#.  3.Card or User address (5-digit) + Individual PIN (4-digit individual PIN)+#.	Yes	1200/1500 (725H)/3000 (757H)	Yes	Yes	11	32	Yes
<b>M6</b>	Stand-Alone	65,535	a. Card only. b. Card and PIN (4-digit public PIN=Arming PWD)+#. c. Card or PIN (4-digit public PIN=Duess code).	No	No	No	No	No	No	No
<b>M8</b>	Networking/ Stand-Alone	1,024/3,000 (725H)	1.Card only.  2.Card and PIN (4-digit individual PIN)+#.  3.Card or PIN (4-digit individual PIN).	Yes	1200/1500 (725H)/3000 (757H)	Yes	Yes	11	32	Yes



### Attention!

The connection between the AR-727 controller and the *ACFA Intellect* software will not be established while the M6 mode selected.

5. Click **Set up Time Zones** to configure the matching between time zones of device and time zones of Intellect Server (4) .
  - a. In the **Intellect TZ** column select the time zone in *ACFA Intellect* corresponding to the time zone of *Soyal* device (1).

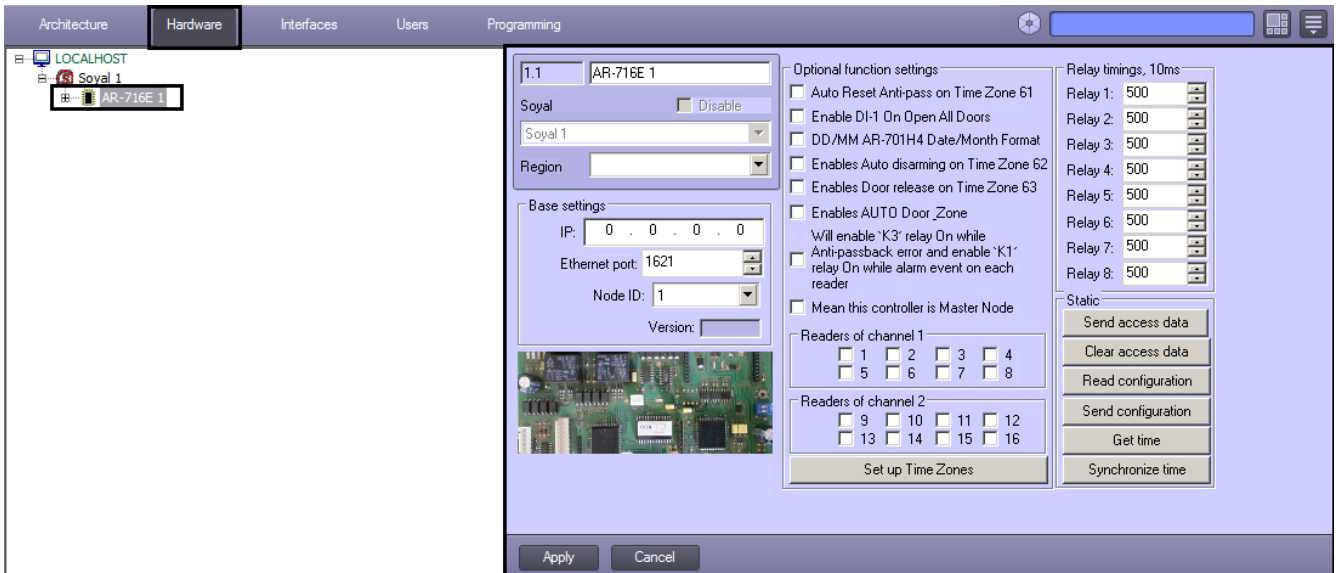


- b. Click **OK** to confirm changes (2).
6. In the **Duess password** field enter the code which is using when the computer opens door and at the same time sends a message for help (5).
7. In the **Master password** field enter the code which allows programming device (6).
8. In the **Arming password** field enter the code for arming (7).
9. In the **Base configuration** section enter the time of relay activation and delay time (8).
10. In the **Extended option** sections select the needed function settings checkboxes (9). Descriptions of all options see in the vendor documentation.
11. Click the **Apply** button.

Configuring parameters of the AR-727 controller is completed.

## Configuration of the AR-716E network controller

Configuration of AR-716E controller is carried out on setting panel of **AR-716E** object. This object is created on the basis of **Soyal** object on **Hardware** tab of **System settings** dialog box.

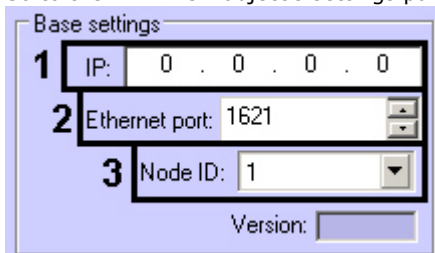


Managing configuration of the *AR-716* and *AR-716E* controllers is the same (see the [Managing the configuration of a AR-716 controller](#) section). Configuring the *AR-716* and *AR-716E* controllers parameters is also the same (see the [Configuring the AR-716 controller parameters](#) section).

## Configure the connection of AR-716E network controller

To configure the connection of a *AR-716E* controller, do the following:

1. Go to the **AR-716E** object's settings panel.



2. In the **IP:** field enter the IP-address of a controller (1).
3. In the **Ethernet:** field enter the port number of connection the *Intellect* Server to a controller (2).
4. From the **Node ID:** drop-down list select ID of *Soyal AR-716E* controller (3).
5. Click **Apply**.

Connection of the *AR-716E* controller is completed.

## Configuration of AR-716E Door object

Configuration of **AR-716E Door** object is carried out on setting panel of corresponding object. This object is created on the basis of **AR-716E** object on **Hardware** tab of **System settings** dialog box.



To configure the *AR-716E door* do the following:

1. Go to the **AR-716E Door** object's settings panel.

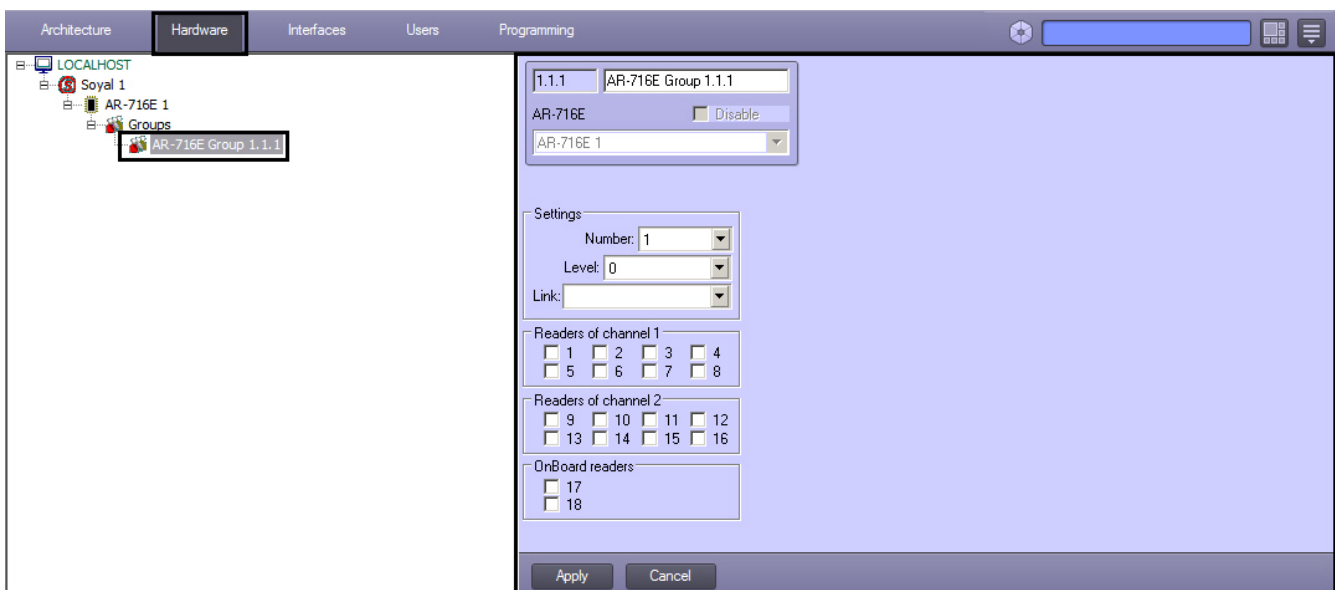


2. From the **Node ID** drop-down list select the ID of *AR-716E Door* object (1).
3. From the **Region In** drop-down list select the **Area** located in the site of exit through this reader (2).
4. From the **Region Out** drop-down list select the **Area** located in the site of entry through this reader (3).
5. To save changes, click the **Apply** button.

This completes the configuration of the *AR-716E Door* object.

## Configuration of the AR-716E Group

Configuration of **AR-716E Group** object is carried out on setting panel of corresponding object. This object is created on the basis of **AR-716E** object on **Hardware** tab of **System settings** dialog box.



To configure the *AR-716E group* do the following:

1. Go to the **AR-716E Group** object's settings panel.

2. From the **Number** drop-down list select the number of *AR-716E Group* object (1).
3. From the **Level** drop-down list select the level of group priority (2).
4. From the **Link** drop-down list select the link on the related group (3).
5. In the **Readers of channel 1** section select those door readers which are connected to the Channel 1 (4).
6. In the **Readers of channel 2** section select those door readers which are connected to the Channel 2 (5).
7. In the **OnBoard readers** section select those WG readers which are connected to the controller (6).
8. To save changes, click the **Apply** button.

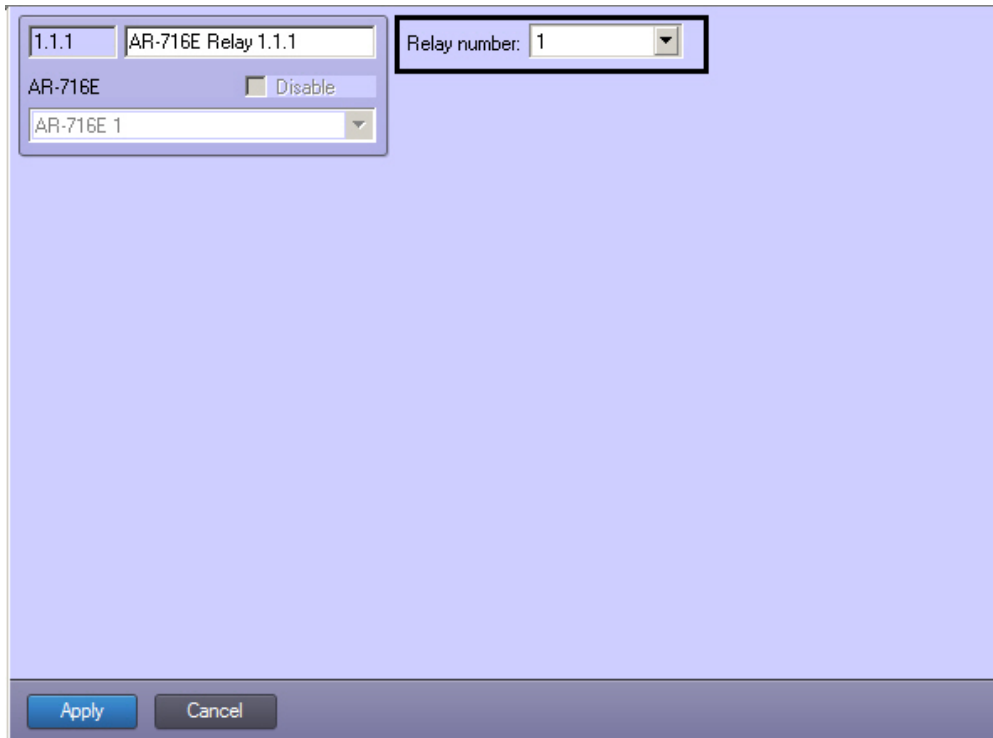
This completes the configuration of the *AR-716E Group* object.

## Configuration of the AR-716E Relay

Configuration of **AR-716E Relay** object is carried out on setting panel of corresponding object. This object is created on the basis of **AR-716E** object on **Hardware** tab of **System settings** dialog box.

To configure the *AR-716E relay* do the following:

1. Go to the **AR-716E Relay** object's settings panel.

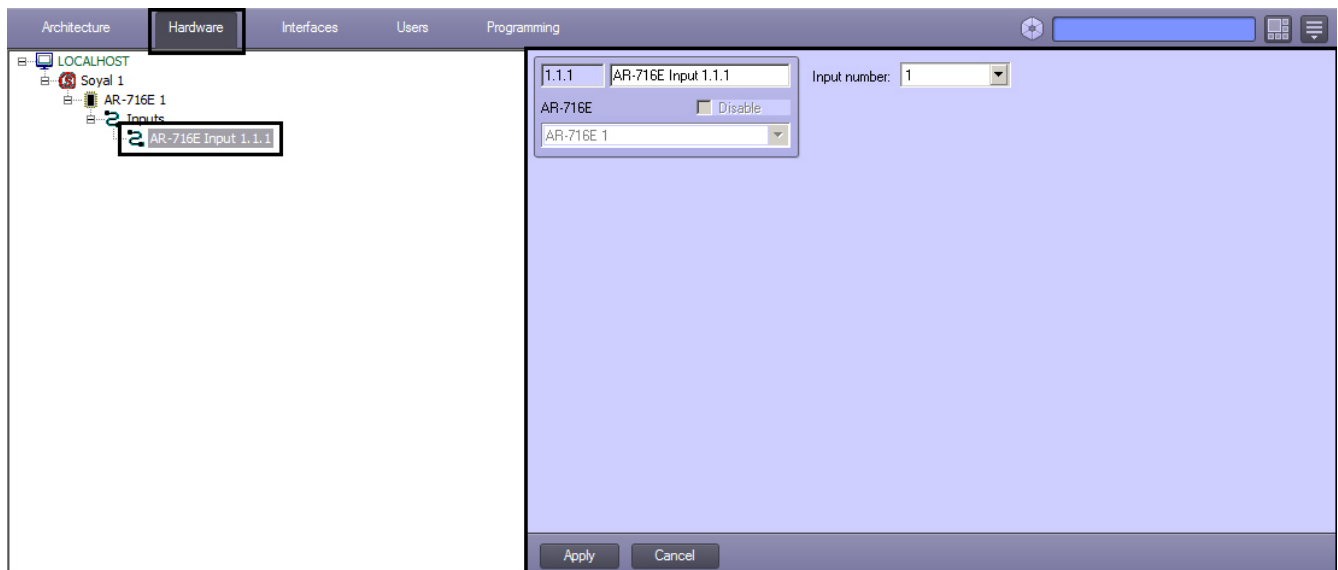


2. From the **Relay number** drop-down list select the number of *AR-716E Relay* object (**1**).
3. To save changes, click the **Apply** button.

This completes the configuration of the *AR-716E Relay* object.

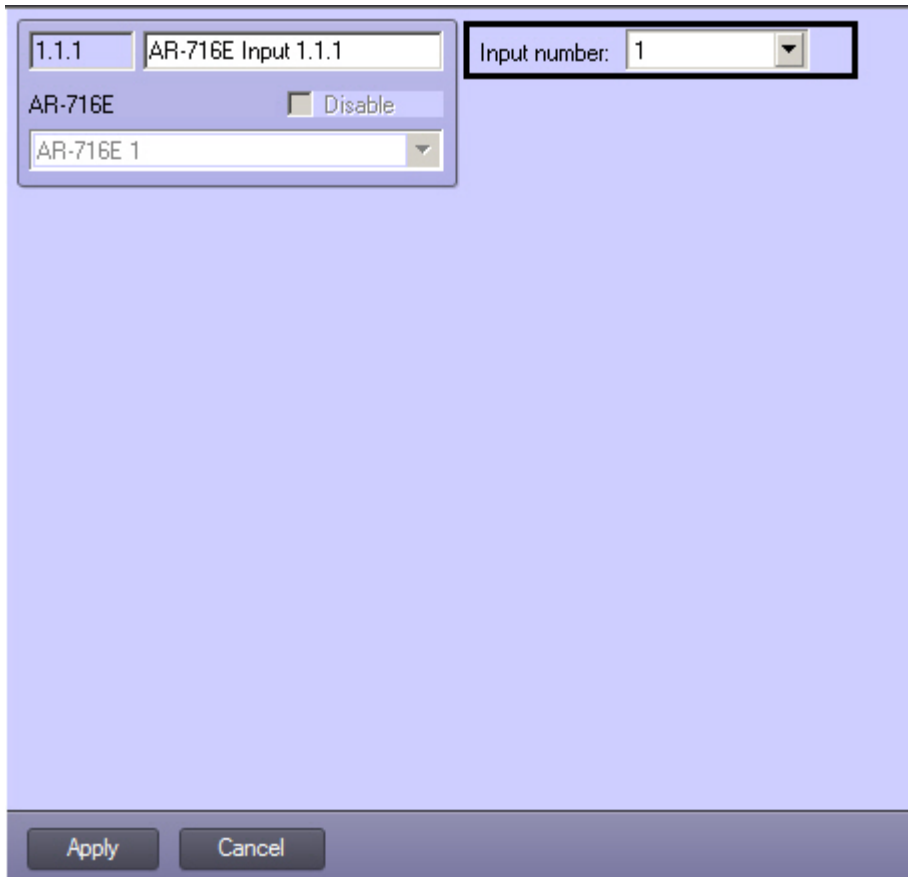
## Configuration of the AR-716E Input

Configuration of **AR-716E Input** object is carried out on setting panel of corresponding object. This object is created on the basis of **AR-716E** object on **Hardware** tab of **System settings** dialog box.



To configure the *AR-716E input* do the following:

1. Go to the **AR-716E Input** object's settings panel.

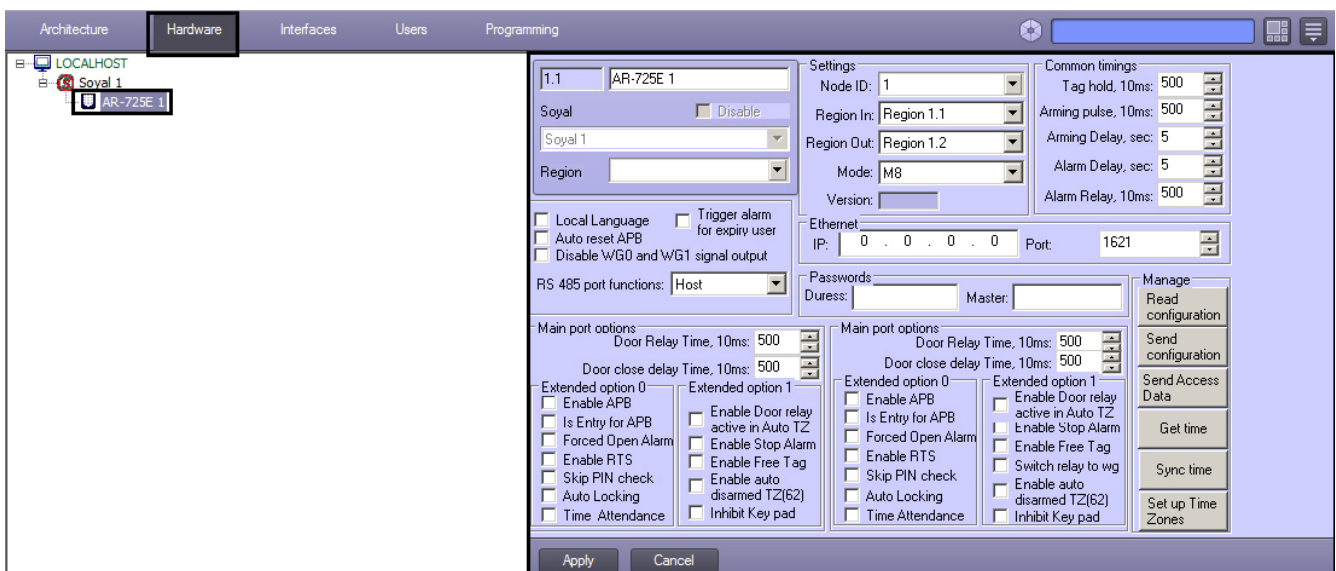


2. From the **Input number** drop-down list select the number of *AR-716E Input* object (**1**).
3. To save changes, click the **Apply** button.

This completes the configuration of the *AR-716E Input* object.

## Configuration of the AR-725E network controller

Configuration of *AR-725E* network controller is carried out on setting panel of corresponding object. This object is created on the basis of **Soyal** object on **Hardware** tab of **System settings** dialog box.

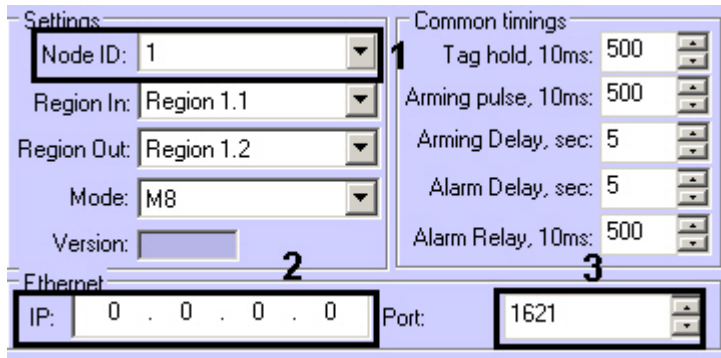


Managing configuration of the *AR-725* and *AR-725E* controllers is the same (see the [Managing the configuration of a AR-725 controller](#) section). Configuring the *AR-725* and *AR-725E* controllers parameters is also the same (see the [Configuring the AR-725 controller parameters](#) section).

## Configure the connection of AR-725E network controller

To configure the connection of a *AR-725E* controller, do the following:

1. Go to the **AR-725E** object's settings panel.



2. From the **Node ID:** drop-down list select ID of *Soyal AR-725E* controller (1).
3. In the **IP:** field enter the IP-address of a controller (2).
4. In the **Port:** field enter the port number of connection the *Intellect Server* to a controller (2).
5. Click **Apply**.

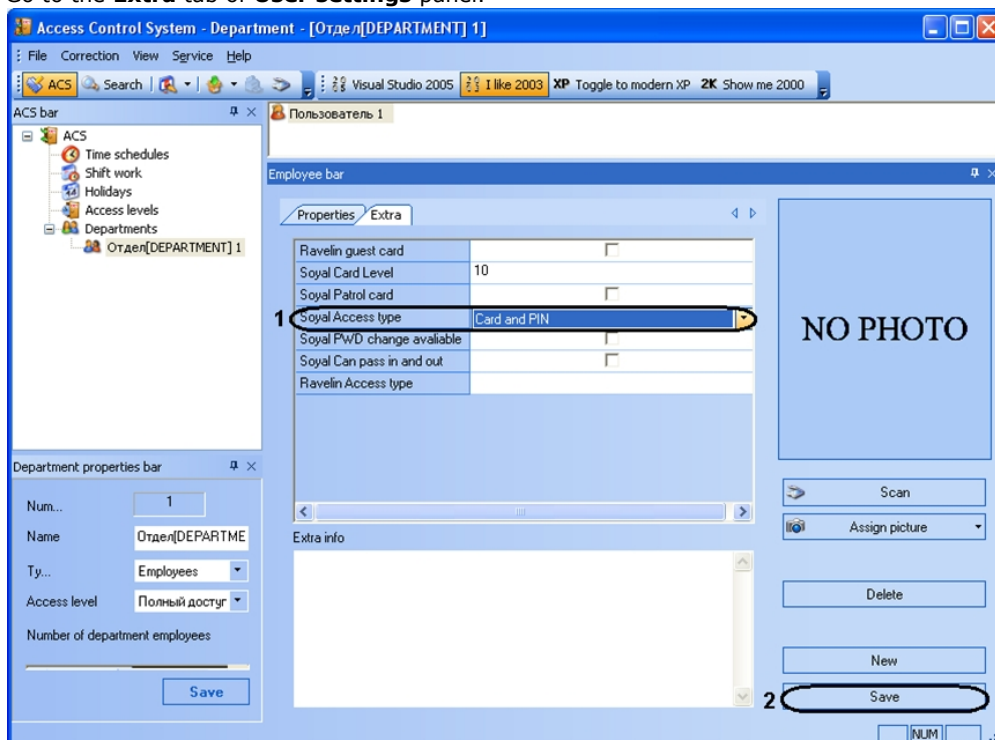
Connection of the *AR-725E* controller is completed.

## Granting the access in the ACFA Intellect software

For granting the access in the *ACFA Intellect* software with the *Soyal* integration module use the **Visitor Management System** interface module.

To configure the access granting do the following:

1. Go to the **Visitor Management System** interface module. The information about working with this module is presented in the *Visitor Management System Module Settings and Operation Guide*.
2. Go to the **User settings** panel. Detailed information about **User settings** panel see in the *Working with users* section of *Visitor Management System Module Settings and Operation Guide*.
3. Go to the **Extra** tab of **User settings** panel.



4. From the **Soyal Access type** drop-down list select the required value for the user (1). If none value is selected the access of the user will be denied.
5. Click **Save** to save changes (2).

## Working with the Soyal integration module

### General information about working with the Soyal Module

The following interface objects are used to work with the *Soyal* integration module:

1. **Map;**
2. **Event Log;**
3. **Visitor Management System.**

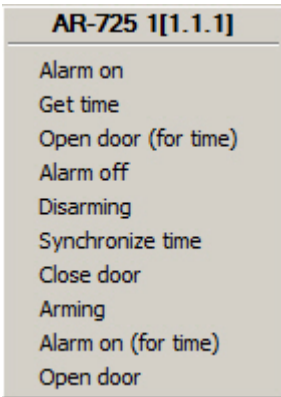
Information about configuring these interface objects is presented in the *Intellect™ Software Package Administrator's*

Guide and in the Visitor Management System Module Settings and Operation Guide.

Operation of interface objects is given in details in the Intellect™ Software Package Operator's Guide.

## Managing an AR-725 controller

AR-725 and AR-725E controllers are managed in the interactive **Map** window using the corresponding object's menu:

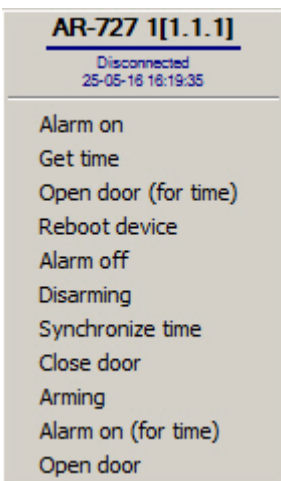


Description of feature menu commands of **AR-725 controller** object is given in the table.

Command of feature menu	Functionality
Open door	Door opening
Disarming	Disarm zone
Close door	Door closing
Alarm off	Disable alarm
Alarm on	Enable alarm
Open door (for time)	Door opening for specified time
Arming	Arm zone
Alarm on (for time)	Enable alarm for specified time
Synchronize time	Send the Server time to the controller
Get time	Require the controller time. Result of the require is displaying the Event Log

## Managing AR-727 and AR-721 controllers

AR-727 and AR-721 controllers are managed in the interactive **Map** window using the corresponding object's menu:



Description of feature menu commands of **AR-727 controller** object is given in the table.

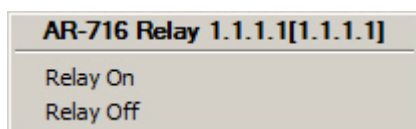
Command of feature menu	Functionality
-------------------------	---------------

Open door	Door opening
Disarming	Disarm zone
Close door	Door closing
Alarm off	Disable alarm
Alarm on	Enable alarm
Open door (for time)	Door opening for specified time
Arming	Arm zone
Reboot device	Controller restart
Alarm on (for time)	Enable alarm for specified time
Synchronize time	Send the Server time to the controller
Get time	Require the controller time. Result of the require is displaying the Event Log

**Note.** Managing of **AR-721** controller object is similar to the managing of AR-727 controller.

## Managing AR-716 and AR-716E relays

AR-716 and AR-716E relays are managed in the interactive **Map** window using the corresponding object's menu:



Description of feature menu commands of **AR-716 relay** object is given in the table.

Command of feature menu	Functionality
Relay Off	Disable relay
Relay On	Enable relay