



Intellect

Unicard Integration Module Settings Guide

1. Introduction into Unicard Module Settings Guide	3
2. Configuration of the Unicard integration module	3
2.1 Procedure for configuring of Unicard integration module	3
2.2 Configuration of the Unicard ACS connection to ACFA Intellect software package	3
2.3 Sending accounts to Unicard controller	4
2.4 Synchronize time of Unicard controller and Server time	5
2.5 Configuring the Unicard controller	5
2.6 Configuring the Unicard reader	6
3. Working with the Unicard integration module	7
3.1 General information about working with the Unicard Module	7
3.2 Control the Unicard access control point	8

Introduction into Unicard Module Settings Guide

On the page:

- Purpose of the document
- General information about the Unicard integration module

Purpose of the document

This *Unicard Module Settings Guide* is a reference manual designed for *Unicard* Module configuration technicians. This module is part of an access control system (ACS) built on the *ACFA Intellect* Software System.

This Guide presents the following materials:

1. general information about the *Unicard* integration module;
2. configuration of the *Unicard* integration module;
3. working with the *Unicard* integration module.

General information about the Unicard integration module

The *Unicard* module is a component of an ACS built on the *ACFA Intellect* Software System. It was designed to perform the following functions:

1. Configuration of the *Unicard* ACS (manufactured by UNICARD SA);
2. Interaction between the *Unicard* ACS and the *ACFA Intellect* Software System (monitoring, control).



Note.

Detailed information about the *Unicard* ACS is presented in the official documentation for this system.

Before configuration the *Unicard* ACS integration module, do the following:

1. Install the *Unicard* hardware on the protected territory.
2. Connect the *Unicard* ACS hardware to the Server.

Configuration of the Unicard integration module

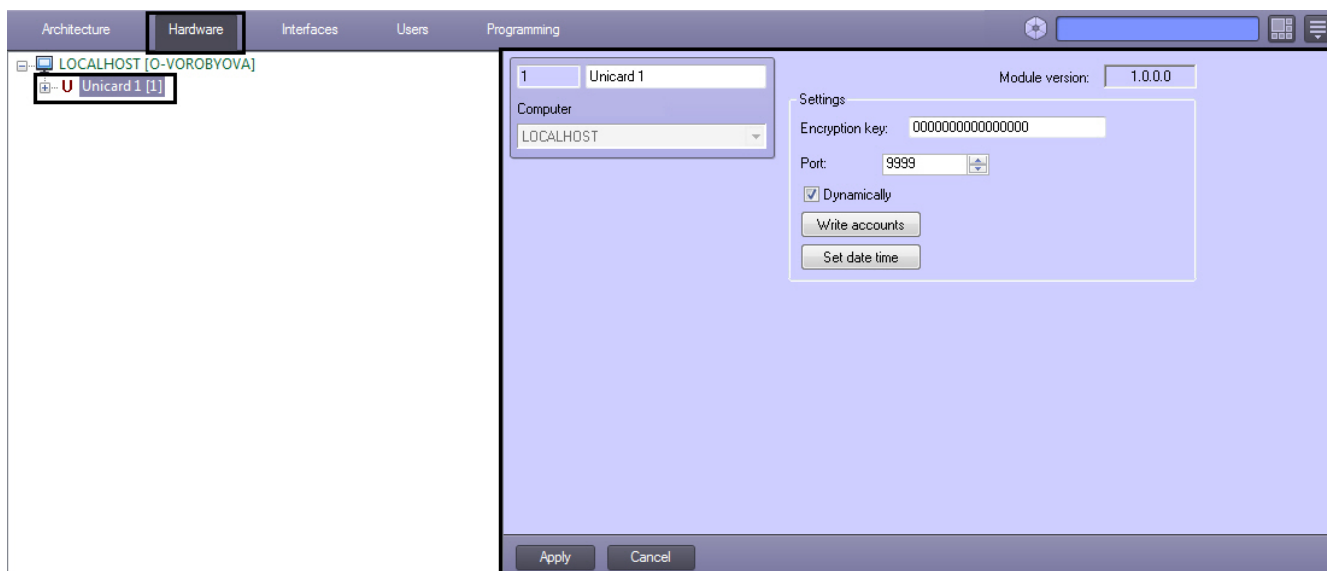
Procedure for configuring of Unicard integration module

The *Unicard* integration module is configured through the following steps:

1. Configuration of *Unicard* ACS connection to *ACFA Intellect* software package.
2. Configure the *Unicard* controller.
3. Configure the *Unicard* reader.

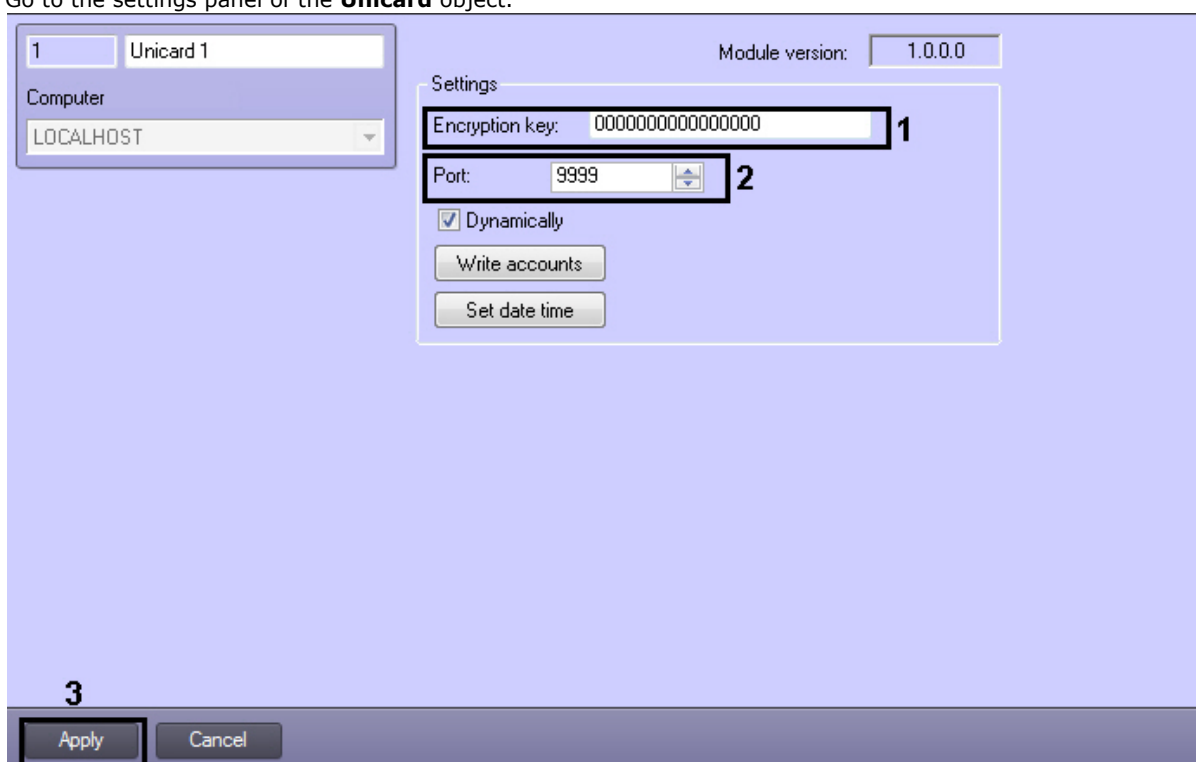
Configuration of the Unicard ACS connection to ACFA Intellect software package

Configuration of the *Unicard* ACS connection to *ACFA Intellect* software package is performed on the settings panel of the **Unicard** object. This object is created on the basis of the **Computer** object on the **Hardware** tab of the **System settings** dialog window.



To configure the connection of *Unicard ACS* to *ACFA Intellect* software package do the following:

1. Go to the settings panel of the **Unicard** object.

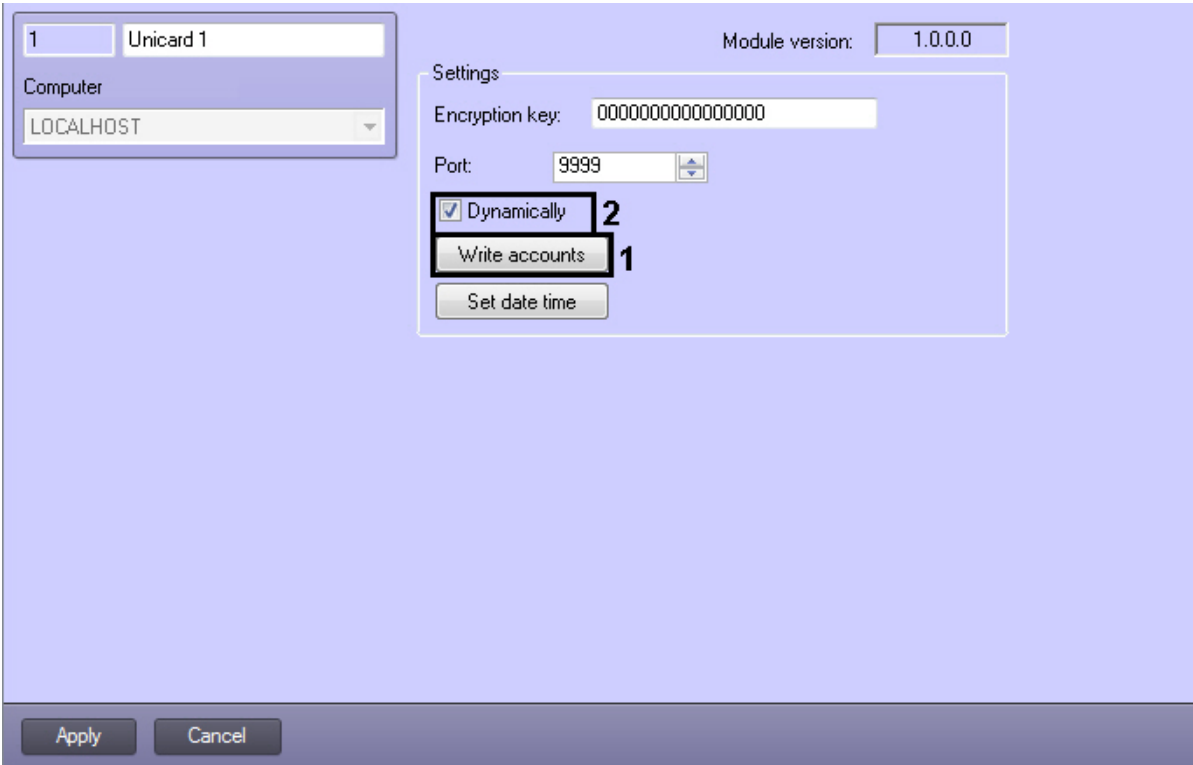


2. In the **Encryption key** field enter the encryption code of data exchange. To get the encryption code refer to the manufacturer of the Unicard hardware (**1**).
3. In the **Port** field specify the number of the COM port to connect to *Unicard ACS* (**2**).
4. Click the **Apply** button to save changes.

Configuration of the *Unicard ACS* connection to the *ACFA Intellect* software package is completed.

Sending accounts to Unicard controller

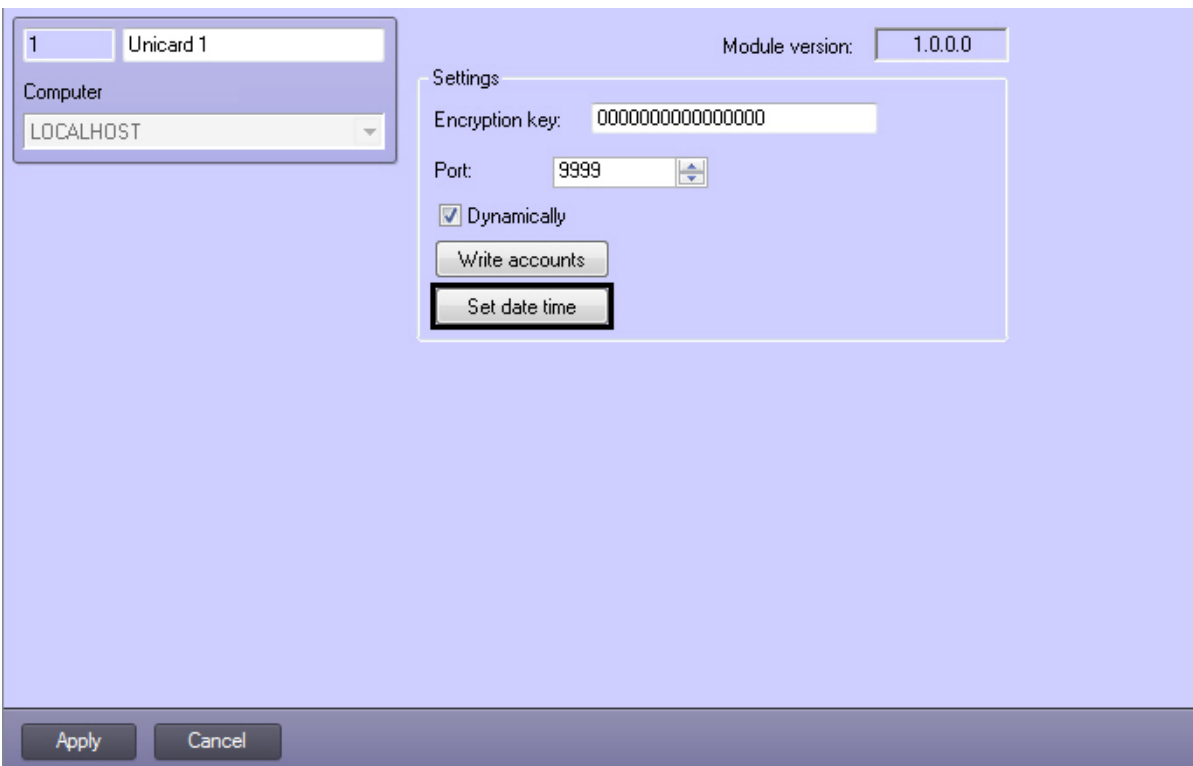
To send settings of time zones, users and holidays to the *Unicard* controller click the **Write accounts** button on the settings panel of the **Unicard** object (**1**).



If changes of user and time zone parameters are to be dynamically sent to the *Unicard* controller, set the **Dynamically** checkbox (2).

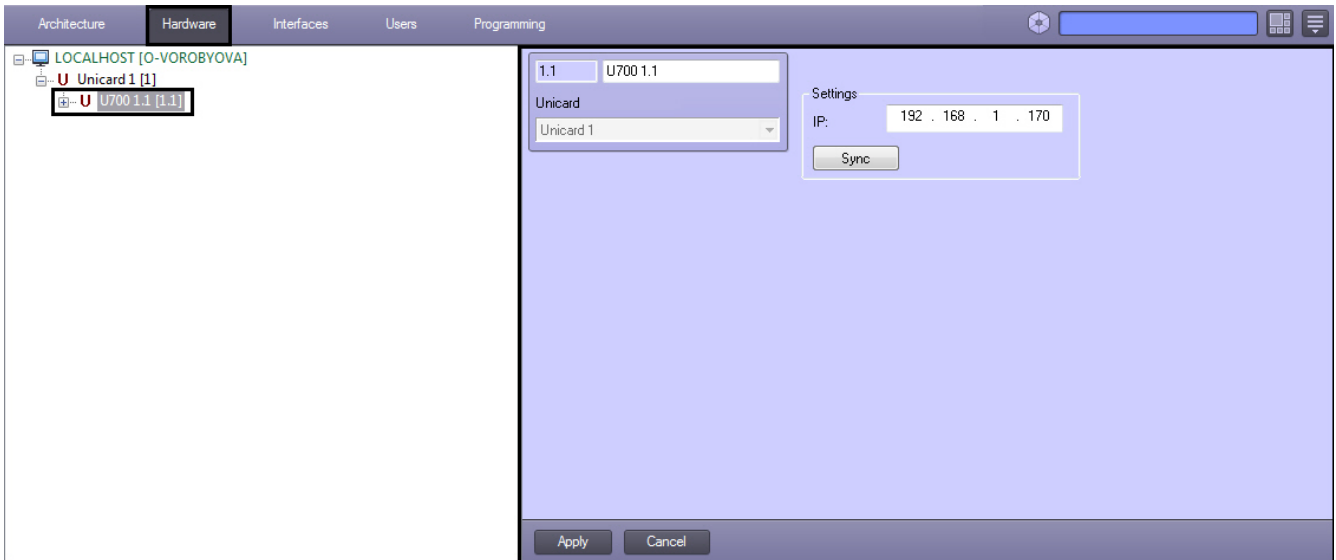
Synchronize time of Unicard controller and Server time

To synchronize date and time of the *Unicard* controller and Server time click the **Set date time** button on the settings panel of the **Unicard** object.



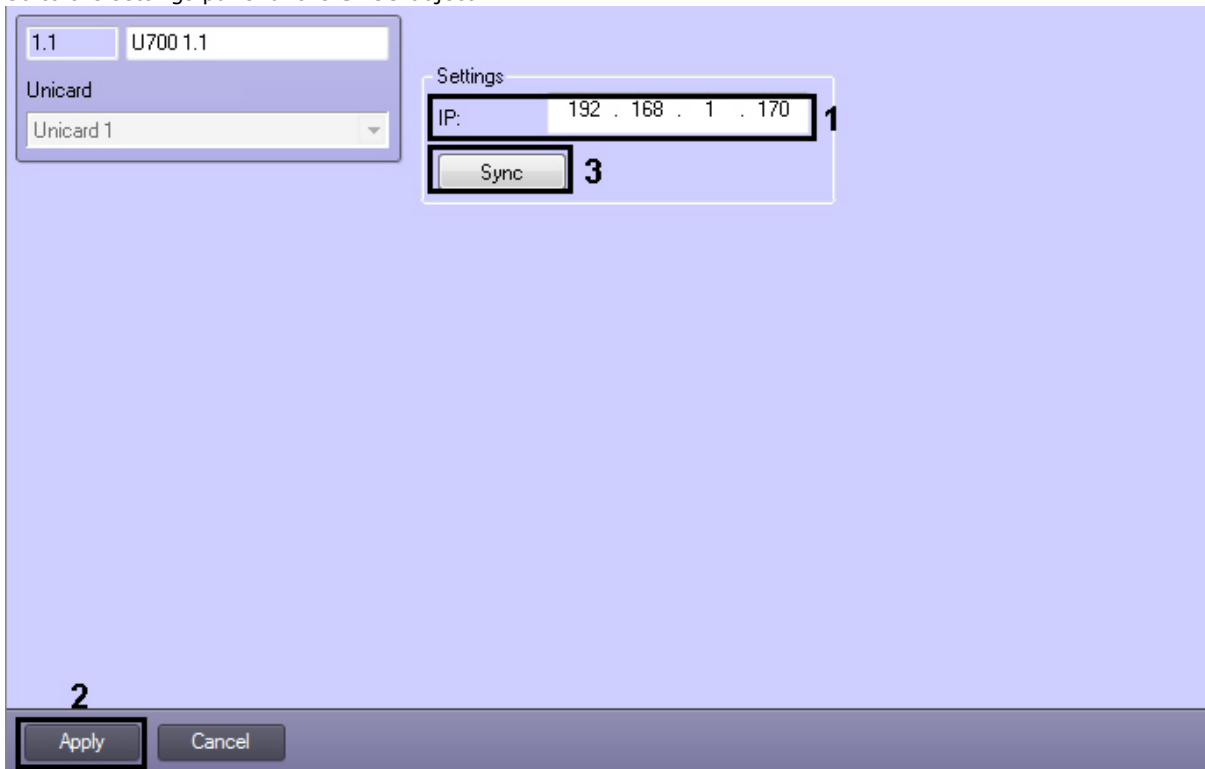
Configuring the Unicard controller

Configuring the *Unicard* controller is performed on the settings panel of the **U700** object created on the basis of the **Unicard** object on the **Hardware** tab of the **System settings** dialog window.



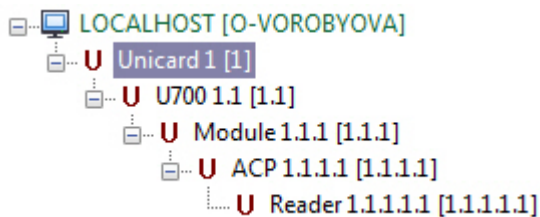
To configure the *Unicard* controller, do the following:

1. Go to the settings panel of the **U700** object.



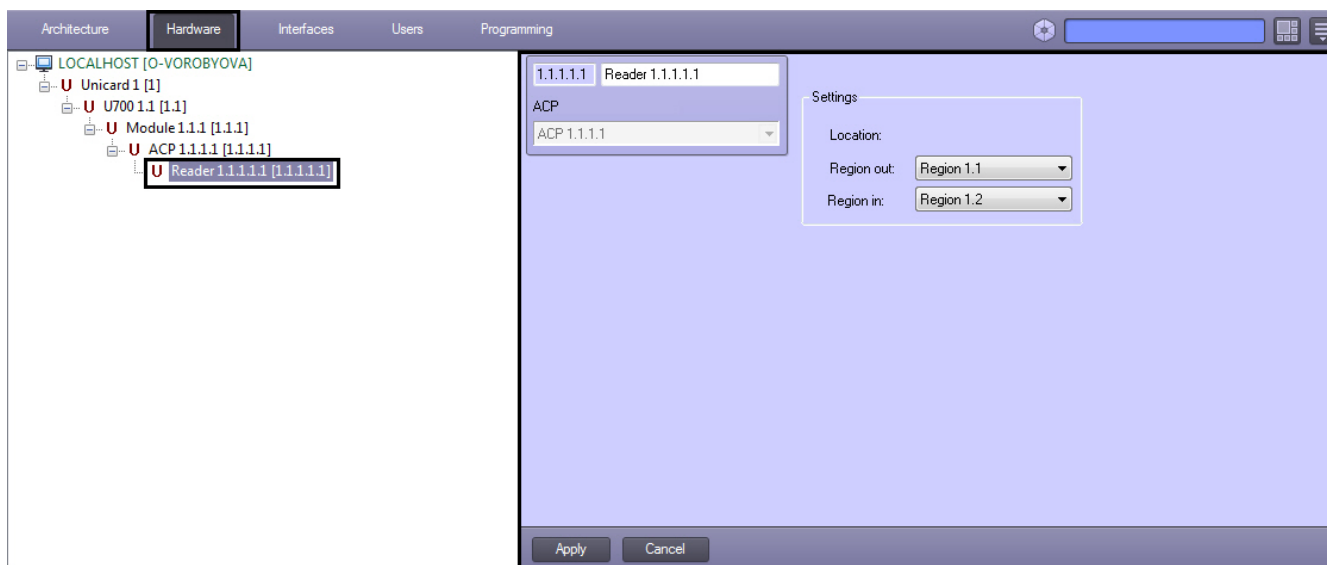
2. Enter the controller's IP address in the **IP** field (1).
3. Click the **Apply** button (2).
4. Click the **Sync** button to synchronize the objects tree (3).

As a result configuration of the *Unicard* system will be read and objects tree will be created in the *ACFA Intellect* software.



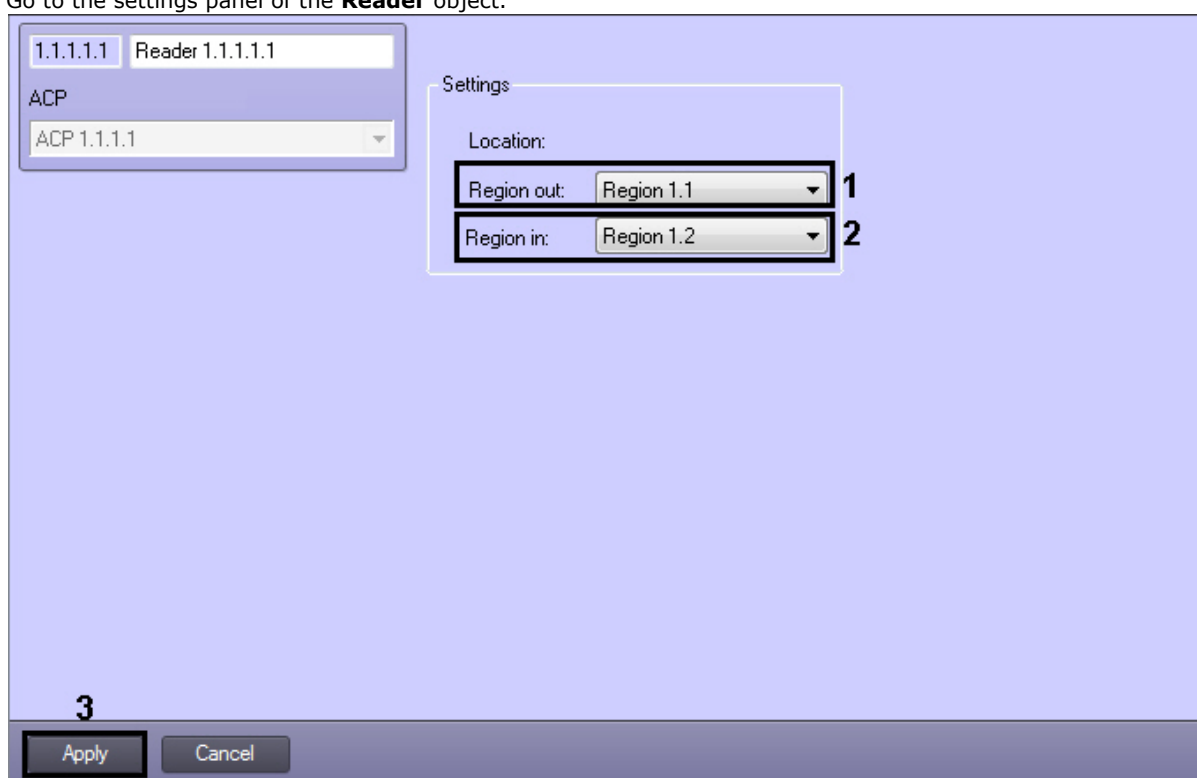
Configuring the Unicard reader

Configuring the *Unicard* reader is performed on the settings panel of the **Reader** object created on the basis of the **ACP** object on the **Hardware** tab of the **System settings** dialog window.



To configure the *Unicard* reader, do the following:

1. Go to the settings panel of the **Reader** object.



2. From the **Region out:** drop-down list select the **Region** object located in the site of entry through the reader (**1**).
3. From the **Region in:** drop-down list select the **Region** object located in the site of exit through the reader (**2**).
4. Click the **Apply** button to save changes.

Configuring the *Unicard* reader is completed.

Working with the Unicard integration module

General information about working with the Unicard Module

The following interface objects are used to work with the *Unicard* integration module:

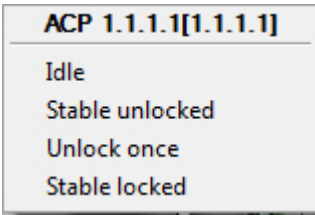
1. **Map;**
2. **Event Log.**

Information about configuring these interface objects is presented in the [Intellect Software Package. Administrator's Guide](#).

Operation of interface objects is given in details in the [Intellect Software Package. Operator's Guide.](#)

Control the Unicard access control point

Control the *Unicard* access control point is carried out in **Map** interactive box using feature menu of **ACP** object.



Available commands in the context menu are described in the table.

Command	Description
Idle	Normal operation mode
Stable unlocked	Switches access control point to permanent unlocking mode
Unlock once	Unlocks access control point
Stable locked	Switches access control point to permanent locking mode