



Unipos Integration Module Configuration
and Operation Manual

1. List of terms used in Unipos Integration Module Configuration and Operation Manual	3
2. Introduction into Unipos Integration Module Configuration and Operation Manual	3
3. Configuration of the UniPos integration module	4
3.1 Procedure for configuring of the UniPos integration module	4
3.2 Configure the connection of the UniPos FSA to the ACFA Intellect software package	4
3.3 Reading UniPos 7002 device configuration	5
3.4 Reading configuration of child objects of UniPos	5
4. Working with UniPos integration module	7
4.1 General information about working with UniPos integration module	7
4.2 Controlling UniPos 7002 FSA device	7
4.3 Controlling UniPos slave	8
4.4 Controlling UniPos zone	8

List of terms used in Unipos Integration Module Configuration and Operation Manual

Addressable device – a device that has its own address and is controlled by a Signaling Line Circuit/Loop (further on SLC or Loop). Addressable devices are usually automatic or manual fire (smoke) detectors, adapters or actuators.

Phase 1-2 transition time – time set for an action or procedure e.g. for a check-up on fire detection if First-Degree Fire is detected in a Fire Detection Zone.

Inspection time – time set for a check-up if FIRE CONDITION STAGE I is detected in a FIRE DETECTION ZONE.

Initialization – the process of assigning addresses to ADDRESSABLE DEVICES in a FIRE ALARM LINE/LOOP.

Controllable outputs – relay potential outputs, which allow for monitoring of the serviceability of the connecting wires between the control panel and the external devices.

Fire alarm line/loop – addressable devices such as adapters, actuators and fire detectors (manual and automatic), physically connected by the means of two-wire connection.

Fire detection zone, zone – a random group of addresses within the addressable fire alarm system, logically united. It is important to make a difference between the physical term ZONE, used in conventional fire alarm systems, where terms ZONE and LINE have equal meaning, and between the logical term ZONE used in addressable fire alarm systems. In the addressable fire alarm systems zone stands for addressable points, logically united. Their allocation within the protected site and the numbers of the fire alarm lines they have been integrated in are not of importance. For example, fire detectors from Line 1 and from Line 16 can be united in one zone.

Fire condition stage I – an automatic fire detector has been activated and the time for fire condition stage I (STAGE 1–2 TRANSITION TIME) has not expired yet. This stage will be ignored if the FCP is in NIGHT MODE.

Fire condition stage II – is triggered if:

1. STAGE 1–2 TRANSITION TIME expired;
2. manual fire detectors were actuated;
3. manual and/or automatic fire detectors were actuated while the FCP was in NIGHT MODE;

Day mode – the mode of IFS7002 FCP operation where FIRE CONDITION STAGE I and FIRE CONDITION STAGE II are triggered by fire detectors.

Night mode – the mode of IFS7002 FCP operation where FIRE CONDITION STAGE II is automatically triggered by fire detectors while FIRE CONDITION STAGE I is ignored.

Overlap mode – when a ZONE is set to this mode, 2 or more fire detectors in the ZONE should be actuated for the FCP to go into FIRE CONDITION STAGE I.

Relay outputs – relay non-potential switching outputs, provided for external devices control, which do not allow for monitoring of the serviceability of the connecting wires between the control panel and the external devices.

Power circuit – two-wire connection provided to power external devices which can not sufficiently powered by the parent SLCs/Loops.

FCP – Interactive Fire Control Panel IFS7002 designed to monitor and control addressable devices such as detectors, adapters and external devices/actuators.

Introduction into Unipos Integration Module Configuration and Operation Manual

On the page:

- [Purpose of the document](#)
- [General information about the UniPos integration module](#)

Purpose of the document

The *UniPos integration module settings guide* is a reference manual designed for *UniPos* Module configuration technicians and operators. This module functions as part of fire and security alarm system which have been built on the *ACFA Intellect* Software System.

This Guide presents the following materials:

1. general information about the *UniPos* module;
2. *UniPos* module settings;
3. working with the *UniPos* module.

General information about the UniPos integration module

The *UniPos* integration module is part of the *FSA* system built on the basis of the *ACFA Intellect* Software System. It is designed to control and manage devices of the *UniPos* FSA . Configuring devices of the *UniPos* FSA in the *ACFA Intellect* software package is impossible.

Before start the working of the *UniPos* integration module install hardware on the secured object and configure the system in the vendor software.



Note.

For more information on the Unipos FSA system, refer to the official documentation of the Unipos FSA.

Configuration of the UniPos integration module

Procedure for configuring of the UniPos integration module

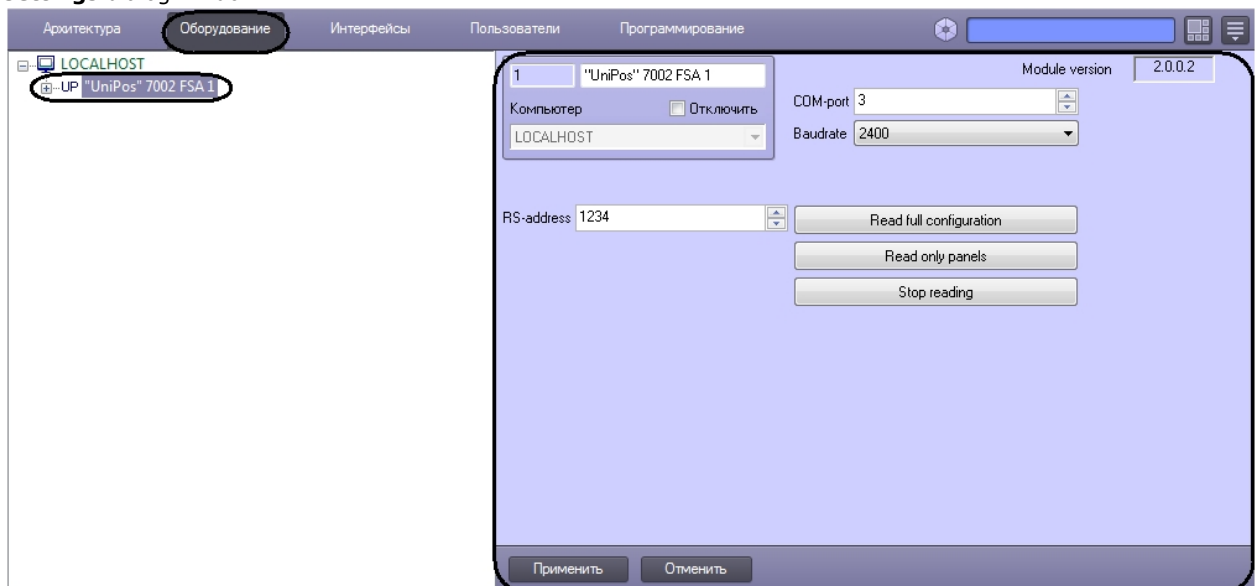
The *UniPos* integration module is configured as follows:

1. Configure the connection of the *UniPos* FSA to the *ACFA Intellect* software package.
2. Read configuration of *UniPos* devices.
3. Reading configuration of child objects of UniPos.

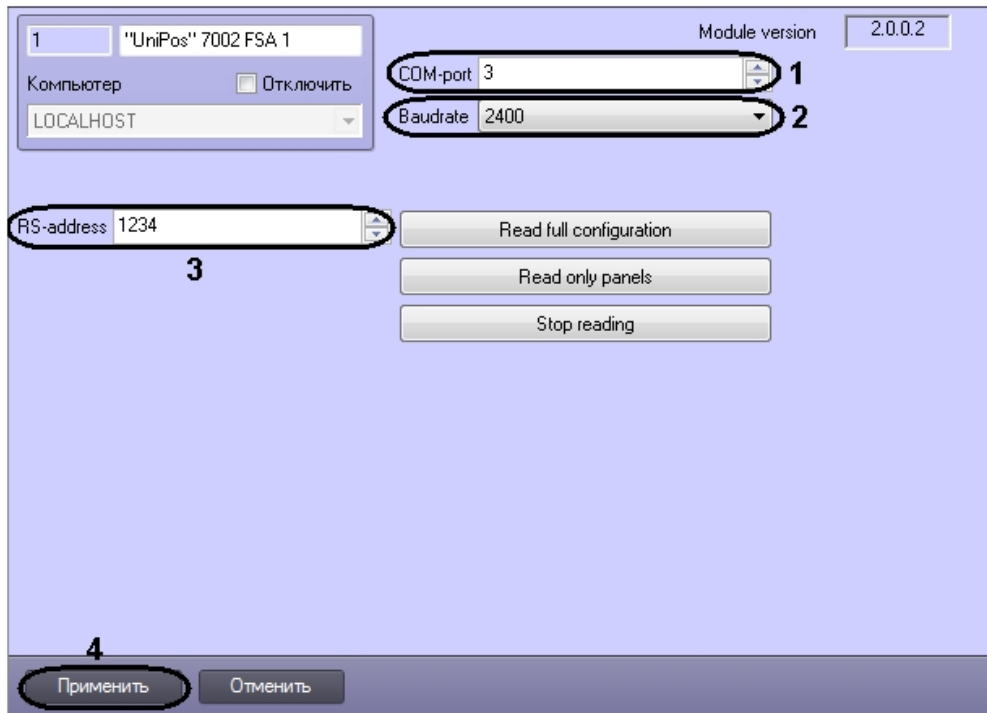
Configure the connection of the UniPos FSA to the ACFA Intellect software package

To configure the connection of the *UniPos* FSA to the *ACFA Intellect* software package, do the following:

1. Create the **UniPos 7002 FSA** object on the basis of the **Computer** object on the **Hardware** tap of the **System settings** dialog window.



2. Set the connection parameters on settings panel of the **UniPos 7002 FSA** object:
 - a. In the **COM-port**: field specify the port of connection the *UniPos* FSA to the *ACFA Intellect* Server (1).
 - b. From the **Baudrate** drop-down list select the data exchange rate between the *Intellect* Server and the *UniPos 7002* control panel. This parameter is expressed in bits per second (2).
 - c. In the **RS-address** field enter the hardware address of the device (3).
 - d. Click **Apply** to save changes (4).

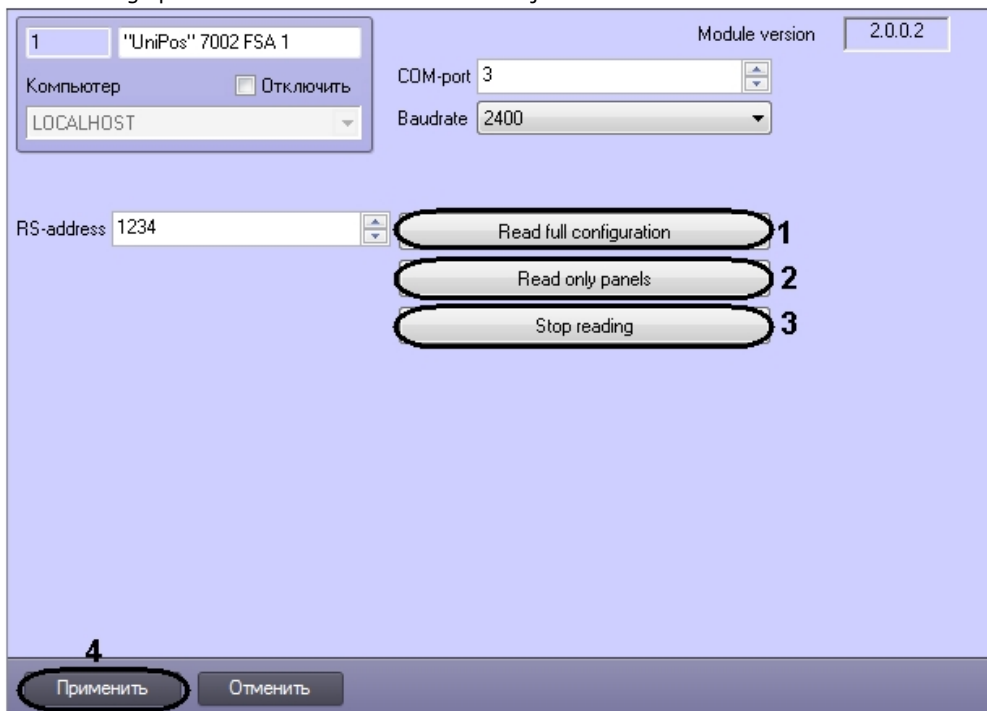


Configuring the connection of the *UniPos 7002 FSA* to the *ACFA Intellect* software package is completed.

Reading UniPos 7002 device configuration

To read the *UniPos 7002* device configuration, do the following:

1. Go to settings panel of the **UniPos 7002 FSA** object.



2. Click the **Read full configuration** button to read the full system configuration (1).



Attention!

Reading the full configuration can take a lot of time.

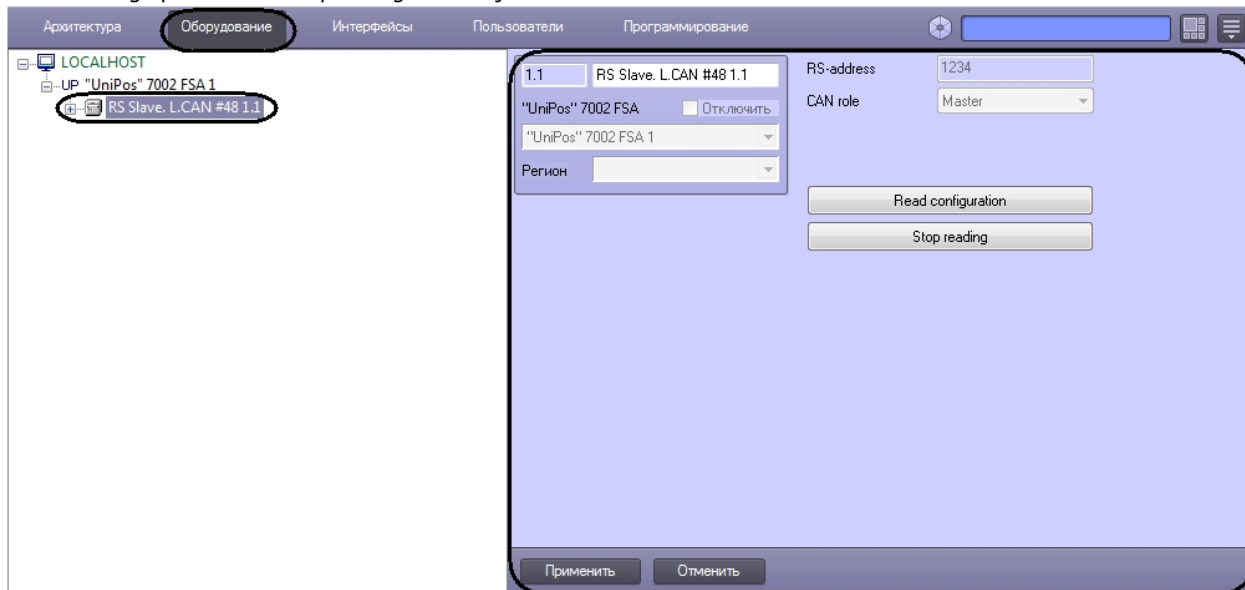
3. Click the **Read only panels** button to read only panels (2). Detailed structure of child objects is not created.
4. Click the **Stop reading** button to stop the configuration reading (3).
5. Click **Apply** to save changes (4).

This completes the reading of *UniPos 7002 FSA* device configuration.

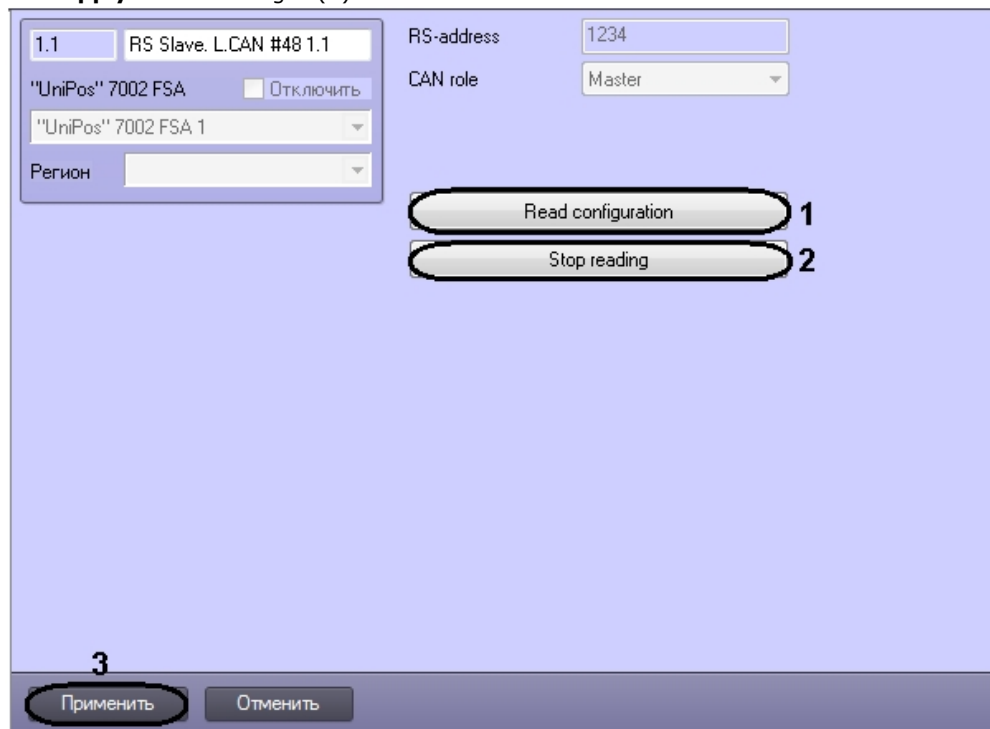
Reading configuration of child objects of UniPos

To read configuration of child objects, do the following:

1. Go to settings panel of corresponding child object.

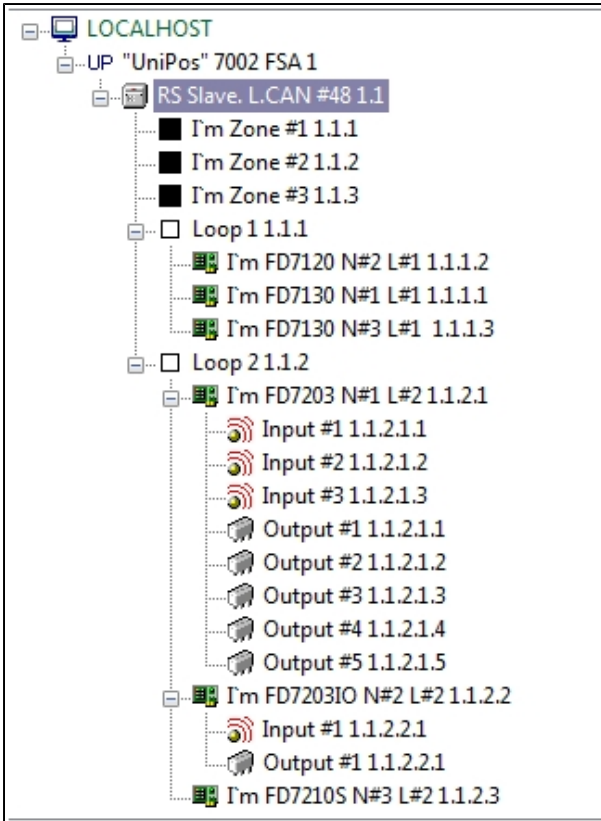


2. Click the **Read configuration** button to read the full configuration of corresponding object (1).
3. Click the **Stop reading** button to stop the reading of configuration (2).
4. Click **Apply** to save changes (3).



This completes the reading of child objects configuration.

Objects corresponding to executive devices within *UniPos FSA* will be automatically created after reading configuration.



Working with UniPos integration module

General information about working with UniPos integration module

The following interface objects are used for working with *UniPos* integration module:

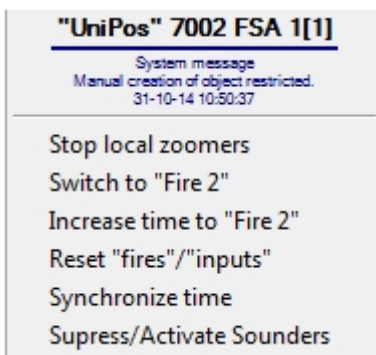
1. **Map;**
2. **Events protocol.**

Information about **Map** and **Events protocol** interface objects' configuration is given in the [Intellect Software Package: Administrator's Guide](#).

Working with these interface objects is given in details in [Intellect Software Package: Operator's Guide](#).

Controlling UniPos 7002 FSA device

Controlling the UniPos 7002 FSA device is carried out in **Map** interactive window using feature menu of **UniPos 7002 FSA** object.



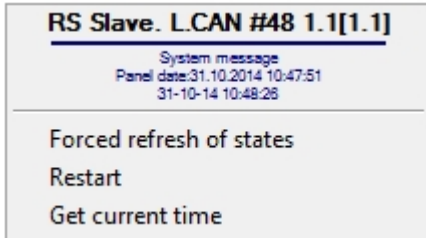
Control the UniPos 7002 FSA:

Menu command	Performed function
Stop local zoomers	Stops beepers at all stations
Switch to "Fire 2"	An FCP under Fire Condition 1 is switched to Fire Condition 2

Increase time to "Fire 2"	Extends the transition time for FCPs under Fire Condition 1 to go into Fire Condition 2
Reset "fires"/ "inputs"	Deletes information about registered fires at all stations
Synchronize time	The time is synchronized with the Intellect server time
Supress/Activate Sounders	Enables/disables the sounder

Controlling UniPos slave

Controlling the UniPos slave is carried out in **Map** interactive window using feature menu of **RS Slave. L.CAN** object.

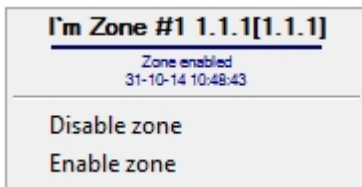


Control the UniPos slave:

Menu command	Performed function
Forced refresh of states	Updating of states
Restart	Restart the device
Get current time	Set the current time

Controlling UniPos zone

Controlling the UniPos zone is carried out in **Map** interactive window using feature menu of **I'm Zone** object.



Control the UniPos zone:

Menu command	Performed function
Disable zone	Turn Off zone
Enable zone	Turn On zone