



ACFA Intellect Installation Guide

1. ACFA Intellect Installation Guide	3
1.1 ACFA Intellect Installation Guide. Introduction	3
1.2 General information about ACFA Intellect software package	3
1.2.1 Structure of the ACFA Intellect software package	3
1.2.2 Purpose of ACFA Intellect Fire and Security Alarm	3
1.2.3 Purpose of ACFA Intellect Access Control System	3
1.2.4 Purpose of ACFA Intellect Perimeter Intrusion Detection Systems	3
1.2.5 Purpose of ACFA Intellect FSA, ACS and PSS integration modules	3
1.2.6 Purpose of ACFA-Intellect service modules	4
1.3 Installing, removing and updating of ACFA Intellect software package	4
1.3.1 Installation of the ACFA Intellect software package	4
1.3.1.1 Completion the installation of the Work Time Accounting module	7
1.3.1.2 Installation of the ORC Wrapper integration module	8
1.3.1.3 Installation of the ApolloSDK v.2 integration module	8
1.3.2 Changing the ACFA Intellect software package	8
1.3.3 Repairing of the ACFA Intellect software package	11
1.3.4 Updating of the ACFA Intellect software package	13
1.3.5 Removing of the ACFA Intellect software package	14
1.3.6 Installation of the ACFA Intellect software package in the silent mode	16
1.4 Change of the ACFA Intellect localization language	20

# ACFA Intellect Installation Guide

## ACFA Intellect Installation Guide. Introduction

*ACFA Intellect Installation Guide* is a reference guide for installation and configuration specialists of the *ACFA Intellect* software package.

This Guide contains:

1. General information about *ACFA Intellect* software package.
2. Installing of *ACFA Intellect* software package.
3. Changing of *ACFA Intellect* software package.
4. Repairing of *ACFA Intellect* software package.
5. Updating of *ACFA Intellect* software package.
6. Removing of *ACFA Intellect* software package.

To get detailed information on how to configure and work with any *ACFA Intellect* integration module see the corresponding document of this integration module.

## General information about ACFA Intellect software package

### Structure of the ACFA Intellect software package

*ACFA Intellect* software package contains following subsystems:

1. Access Control Subsystem (ACS).
2. Fire and Security Alarm (FSA).
3. Perimeter Intrusion Detection Systems (PIDS).
4. Service modules.

Each subsystem includes integration modules of corresponding devices. Service modules are modules designed to facilitate operation of integration modules.

### Purpose of ACFA Intellect Fire and Security Alarm

*ACFA Intellect* Fire and Security Alarm (FSA) performs following functions:

1. processing information coming from security panels, alarm sensors, and other notifiers;
2. managing actuators – sound and light notifiers, and others.

*FSA* is a combination of software and hardware. Hardware portion consist of *FSA* system of other manufacturer integrated into *ACFA Intellect*. Software portion consist of integration modules that allow configuring interaction between *ACFA Intellect* and the hardware portion.

### Purpose of ACFA Intellect Access Control System

*ACFA Intellect* Access Control System (ACS) has the following module structure:

1. integration modules of ACS device;
2. *PhotoIdentification* module;
3. *Visitor Management System* module;
4. *Time and Attendance* module;
5. *Access Manager* module;
6. *Event Manager* module.

*ACFA Intellect* ACS performs following functions (depending on which functional modules are installed):

1. combining access control with other security subsystems in a single control centers of a distributed system;
2. programming ACS responses to events, including those occurring in other security subsystems;
3. highly automated access rights management;
4. combining user groups;
5. monitoring of system condition/performance.

### Purpose of ACFA Intellect Perimeter Intrusion Detection Systems

*ACFA Intellect* Perimeter Intrusion Detection Systems performs following functions:

1. processing information coming from perimetral security sensors and from sensors mounted on the entry to the object secured by perimeter.
2. managing actuators - security lighting tools, tools of entry control (turnslite, turnpike).

*ACFA Intellect* Perimeter Intrusion Detection Systems is a combination of software and hardware. Software portion consist of program modules which allow configuring interaction between *ACFA Intellect* software package and hardware. Hardware portion consist of PIDS of third party manufacturer.

### Purpose of ACFA Intellect FSA, ACS and PSS integration modules

FSA, ACS and PSS integration modules perform following functions:

1. configuring interaction between ACFA Intellect software package and FSA/ACS/PSS device;



**Note.**

The hardware is a third-party FSA/ACS/PSS.

2. processing information coming from security panels, alarm sensors and other notifiers (if FSA functions are integrated);
3. processing information coming from readers, electromechanical locks and other tools of access control (if ACS functions are integrated);
4. managing alarm actuators and firefighting-related actuators (if the FSA functions are integrated);
5. managing access-related actuators (devices for locking and unlocking gates) (if the FSA functions are integrated).

## Purpose of ACFA-Intellect service modules

ACFA-Intellect service modules are designed to facilitate operation of integration modules. The following modules are included:

1. Access Manager.
2. Event Manager.
3. Time&Attendance.
4. Virtual Access Server.
5. Axxon Next Bridge.
6. User import.



**Note.**

Legacy modules such as *Photo Identification* (replaced by *Event Manager*), *Visitor Management System* (replaced by *Access Manager*) and *Data Import/Export* (replaced by *User Import*) are also included into ACFA-Intellect installation kit in order to ensure compatibility between software versions. It is strongly not recommended to use legacy modules.

## Installing, removing and updating of ACFA Intellect software package

### Installation of the ACFA Intellect software package

The ACFA Intellect software is installed as a part of the Intellect software. Information about compatibility of the Intellect software versions and ACFA Intellect is presented by link: [General information about product releases and versions compatibility](#).

Before the ACFA Intellect installation perform the Intellect software package installation.



**Note.**

Language of installer and installation language are defined on the basis of language which was in use while base Intellect installation. Change of localization language with the help of language packs after base Intellect installation will not influence on language of ACFA Intellect installation.

Language of the ACFA Intellect localization can be changed using language packs (see the [Change of the ACFA Intellect localization language](#) section).

In a distributed security system, install ACFA-Intellect integration or service modules on all computers where they are to be used (Server, RAW, RMW). When installed on Server or RAW, ACFA-Intellect provides functions for configuration, control and monitoring. On RMW the modules are required for control and monitoring.

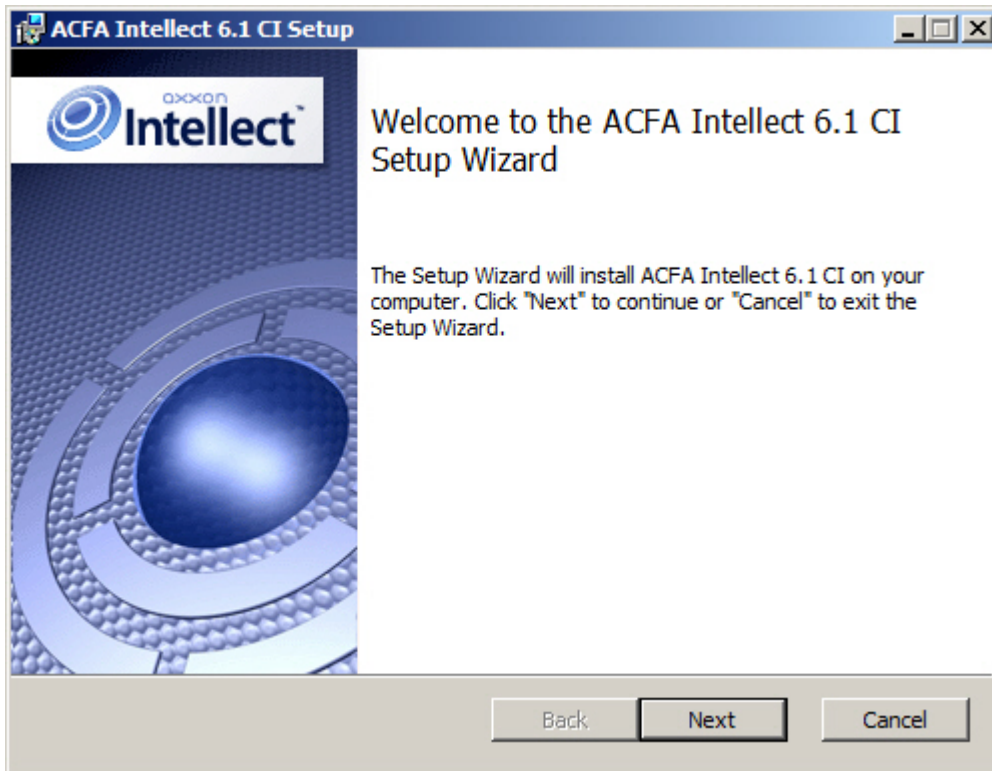
ACFA-Intellect versions must be the same on all computers in the distributed system. For more details on how to install and configure base Intellect software for distributed architecture, refer to Intellect software. *Administrator's Guide* (the most relevant version of this document is available in [AxxonSoft documentation repository](#)).

Installation of the ACFA Intellect software package is performed as follows:

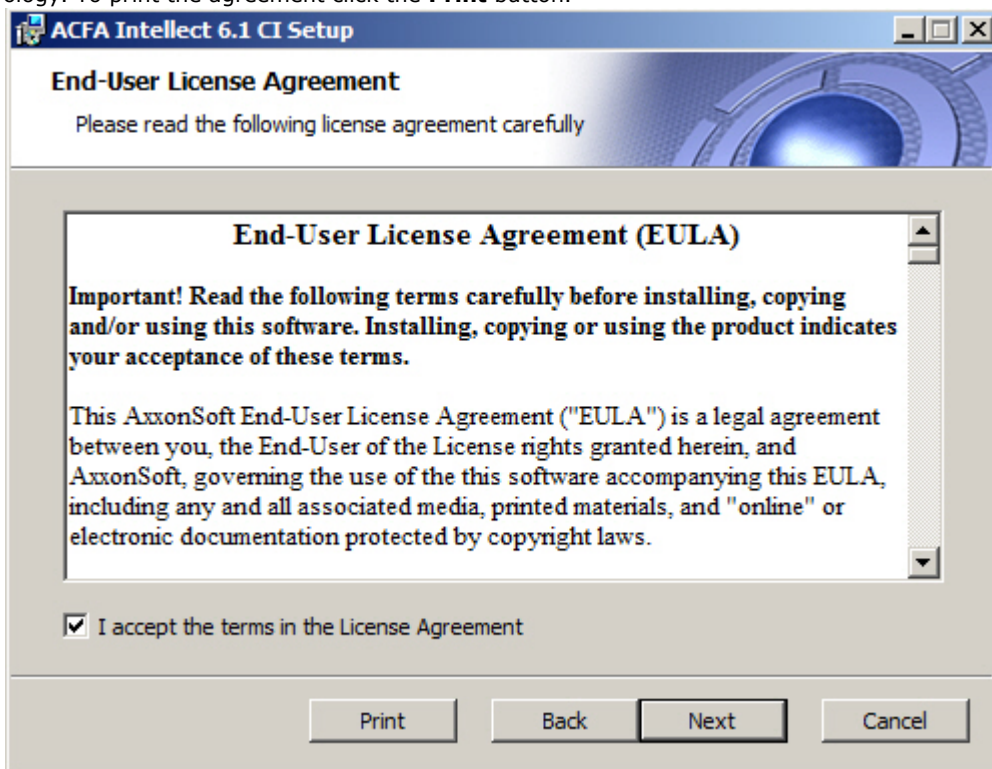
1. Start the *setup.exe* file from the archive of ACFA Intellect installer package.



2. The dialog window with the **Welcome to the ACFA Intellect Setup Wizard** message is displayed. To continue the installation process click the **Next** button. To cancel installation click the **Cancel** button.



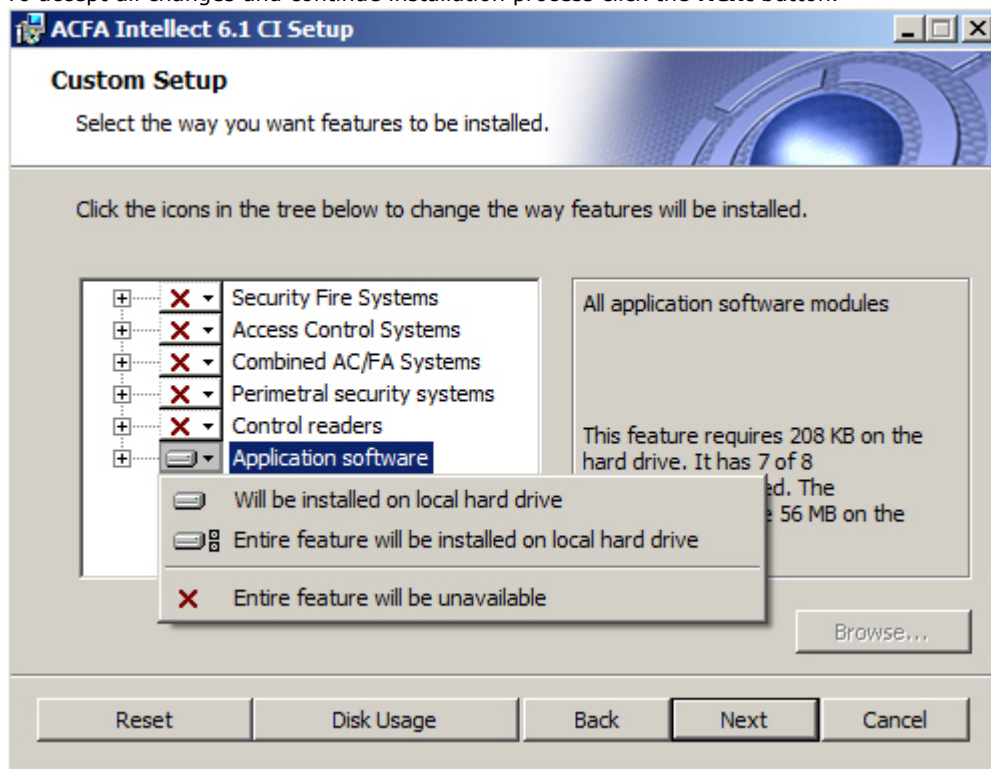
3. In the next dialog window accept or decline the terms of the License agreement about using of *ACFA Intellect* technology. To print the agreement click the **Print** button.



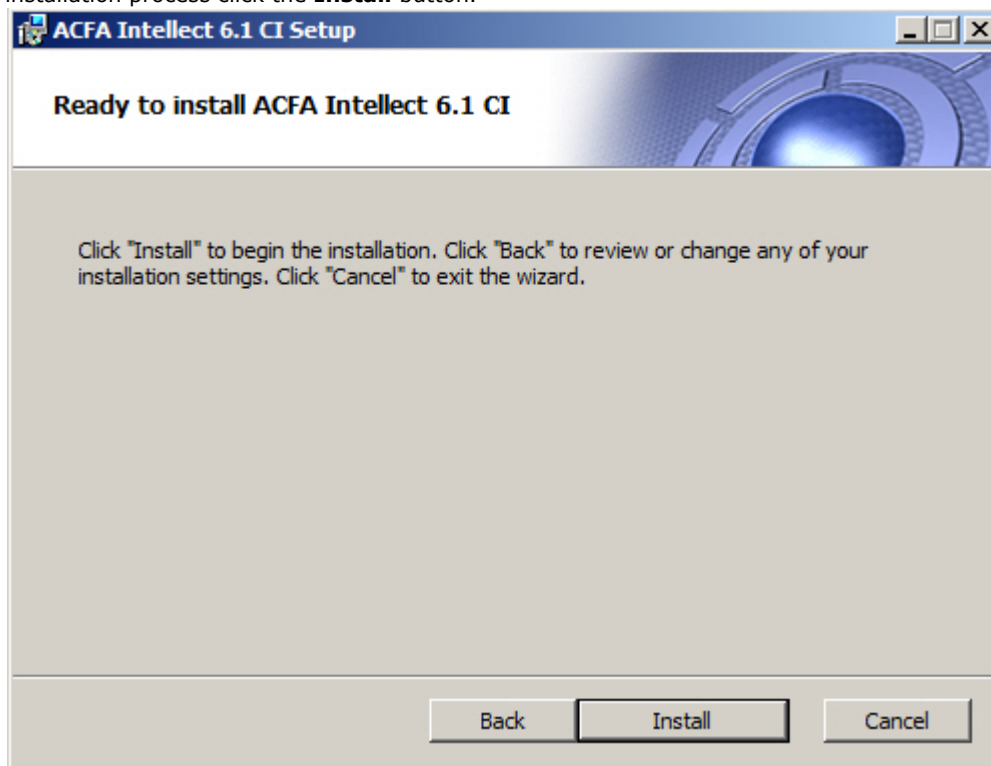
- After the terms review confirm the acceptance of license agreement by setting the **I accept the terms of the License agreement** checkbox and clicking the **Next** button. Otherwise, cancel the installation.
4. In the **Custom Setup** dialog window select modules which are to be installed. To install module or *ACFA Intellect* subsystem select the **Entire feature will be installed on local hard drive** item. Information about component and about required disk space is displayed in the right when selecting some

component.

To accept all changes and continue installation process click the **Next** button.

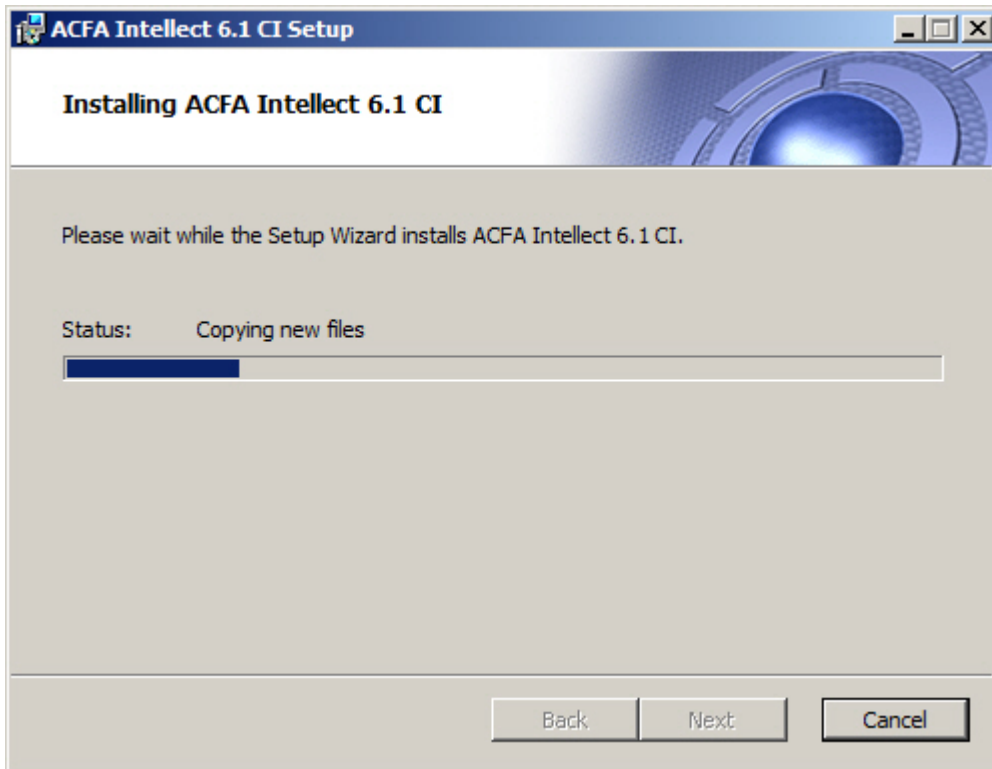


5. In the **Ready to install ACFA Intellect** dialog window run the process of *ACFA Intellect* installation. To run the installation process click the **Install** button.



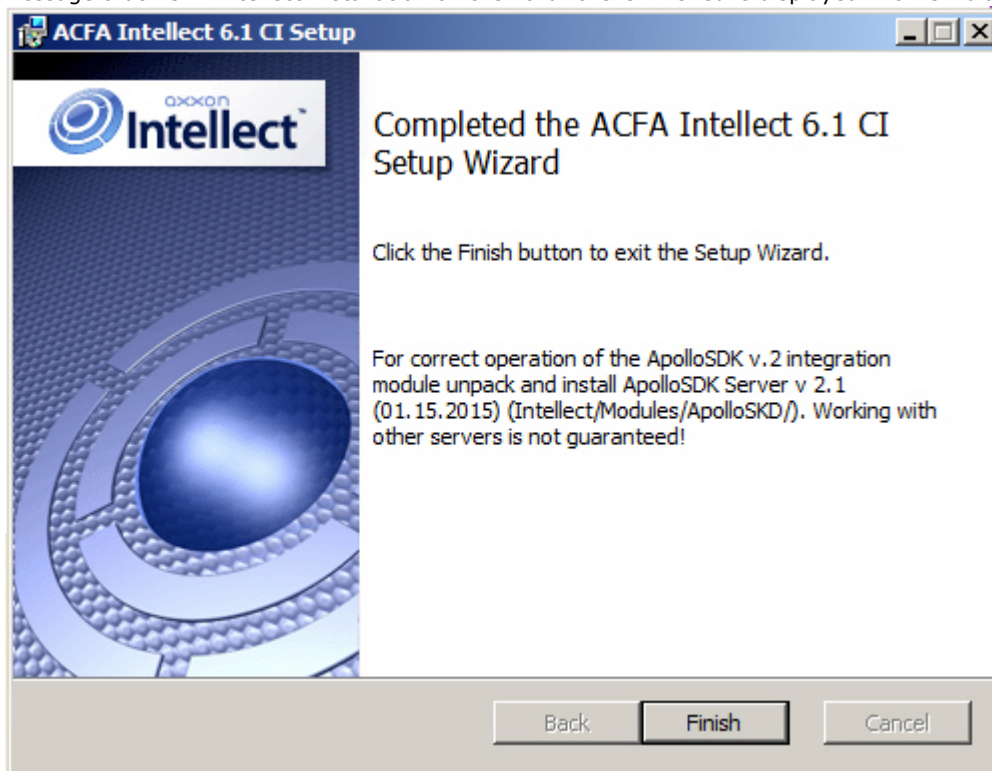
To change settings click the **Back** button.

6. The copying of *ACFA Intellect* files on the computer hardware will be performed.



Wait for the completion of copying files and next updating of installation box.

7. Message that *ACFA Intellect* installation on the hardware is finished is displayed in a new dialog box.



8. To complete the wizard working click the **Ready** button.



**Note.**

After the *ACFA Intellect* is installed it is recommended to update the DB structure using the *idb.exe* utility located in the Intellect software directory. Database updating is performed by clicking the **Update database** button in the utility window.

The *ACFA Intellect software package* installation is finished.

For some modules performing additional actions or installation of additional software can be required after installation of the *ACFA Intellect* software. Description of installation such modules is presented in following sections.

### **Completion the installation of the Work Time Accounting module**

Update the database using the updateDB.exe utility (see the *Time and Attendance Module Settings and Operation Guide document*) if installation of the *Work Time Accounting* was performed.

## Installation of the ORC Wrapper integration module

*ORC Wrapper* integration module is included in the *ACFA Intellect* software package. After installation the *ACFA Intellect* software package do the following for correct module working

1. Go to the *Intellect* software installation directory\Modules\ORCServer.
2. Start the setup.exe executive file and perform installation of required components.

## Installation of the ApolloSDK v.2 integration module

Installation of the *ApolloSDK v.2* integration module is performed after completion the installation of the *ACFA Intellect* software package. To install the *ApolloSDK v.2* integration module, do the following:

1. Unpack the **ApolloSDK v2.1(01.15.2015) Installer** archive which is located in the *Intellect software installation directory\Modules\ApolloSDK*.
2. Run the **ApolloSDK v.2.1 (01.15.2015) Installer\ApolloSDKSetup.exe** executive file to install the *Apollo* server version 2.1.



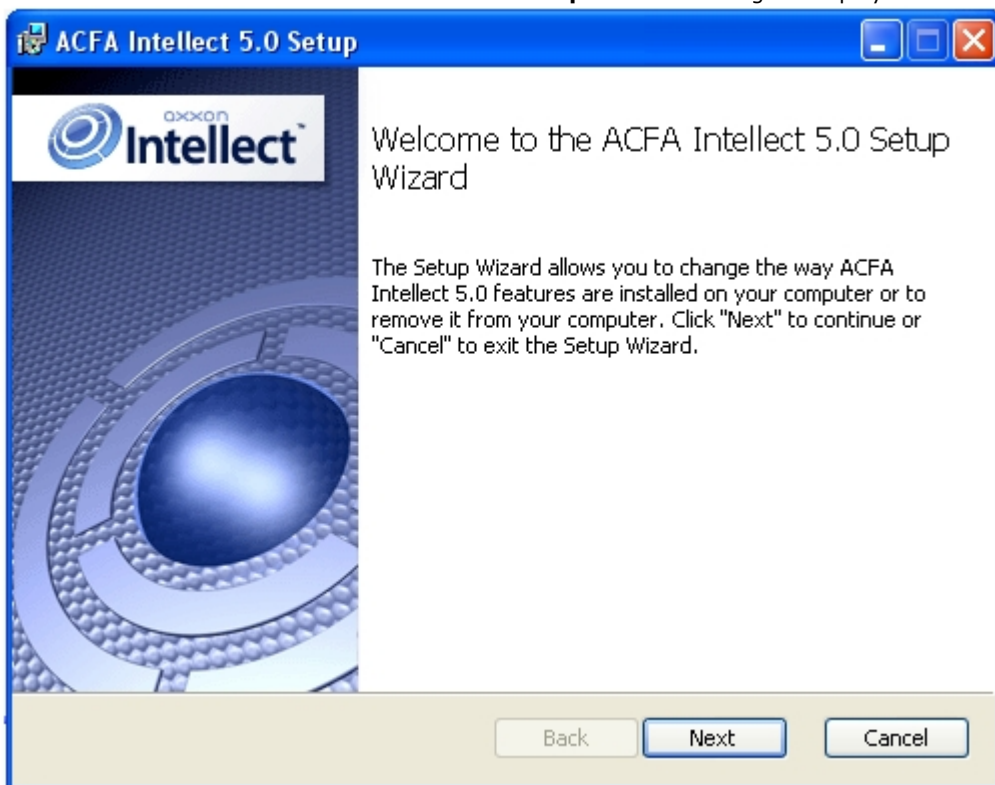
### Attention!

Functioning the *ApolloSDK v.2* with other servers is not guaranteed.

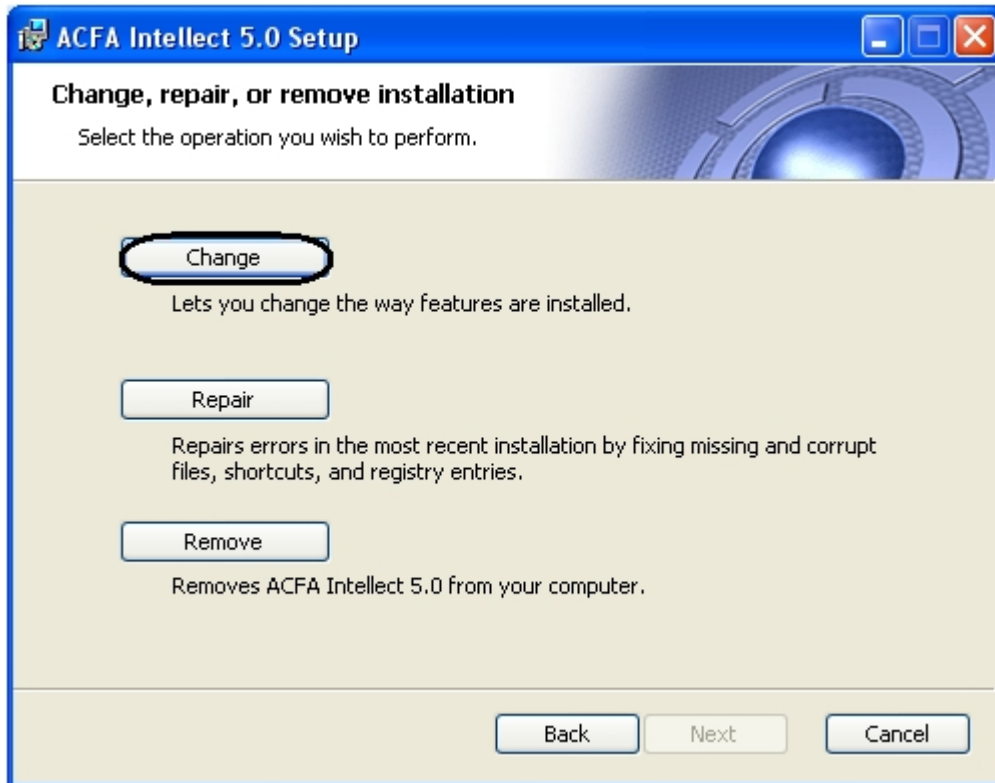
## Changing the ACFA Intellect software package

To add or remove some *ACFA Intellect* components, do the following:

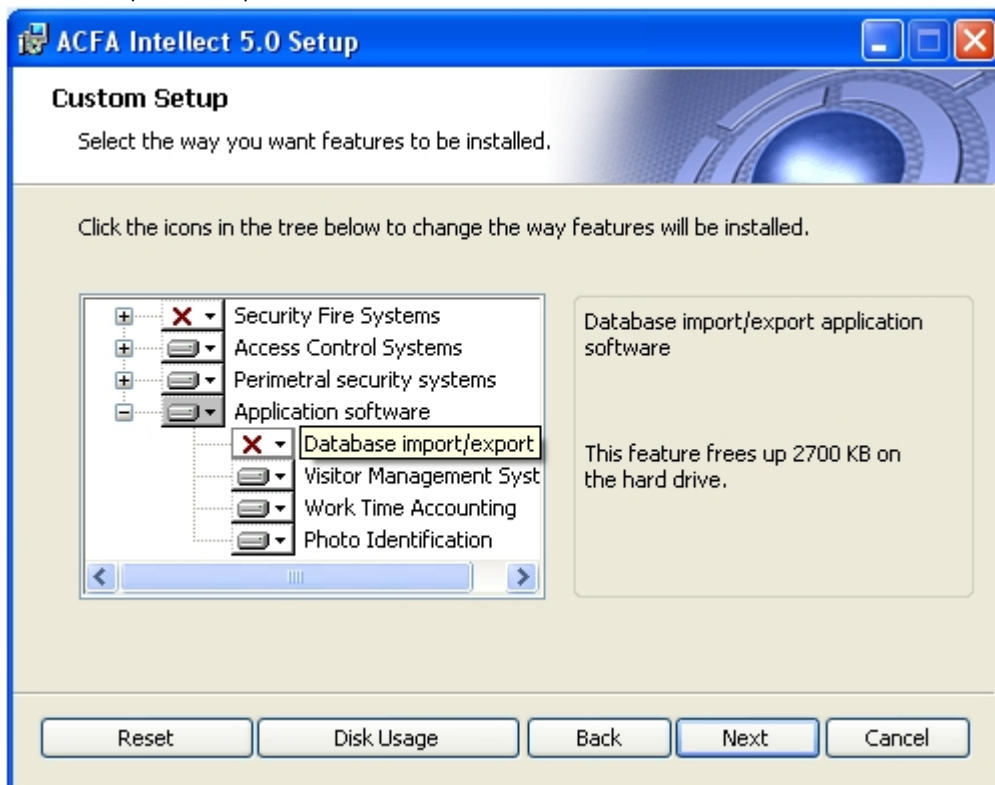
1. Run the **setup.exe** executive file installer of installed *ACFA Intellect* version or select **Remove ACFA Intellect** item in the **Start -> Programs -> Intellect** menu.
2. Window with **Welcome to the ACFA Intellect Setup Wizard** message is displayed. Click the **Next** button.



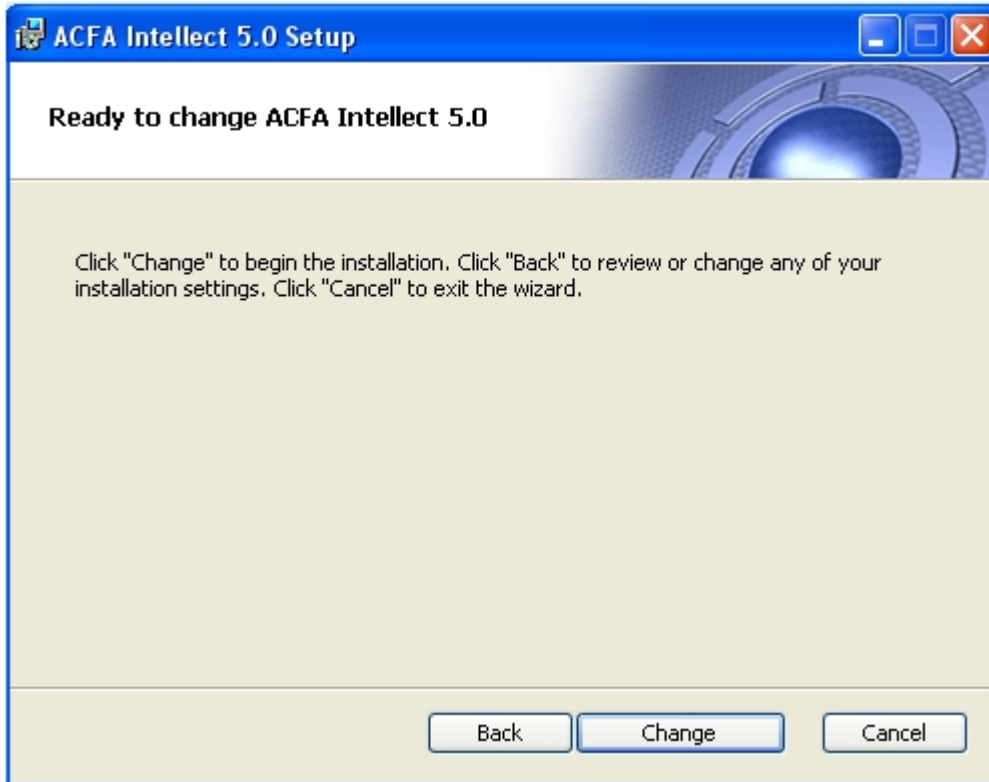
3. In the **Change, repair, or remove installation** window click the **Change** button.



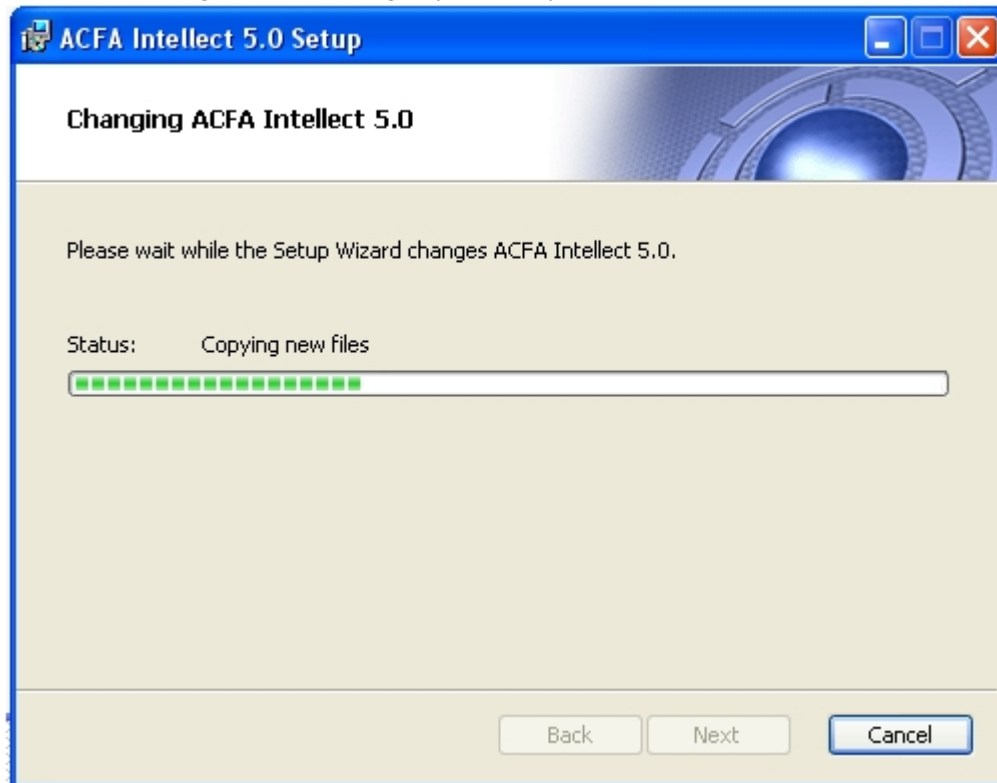
4. In the opened **Custom Setup** window select components which are to be installed or removed. To install module or ACFA Intellect subsystem select the **Entire feature will be installed on local hard drive** item. To remove component select the **Entire feature will be unavailable** item. Information about component and about required disk space is displayed in the right when selecting some component. When all required components are selected click the **Next** button.



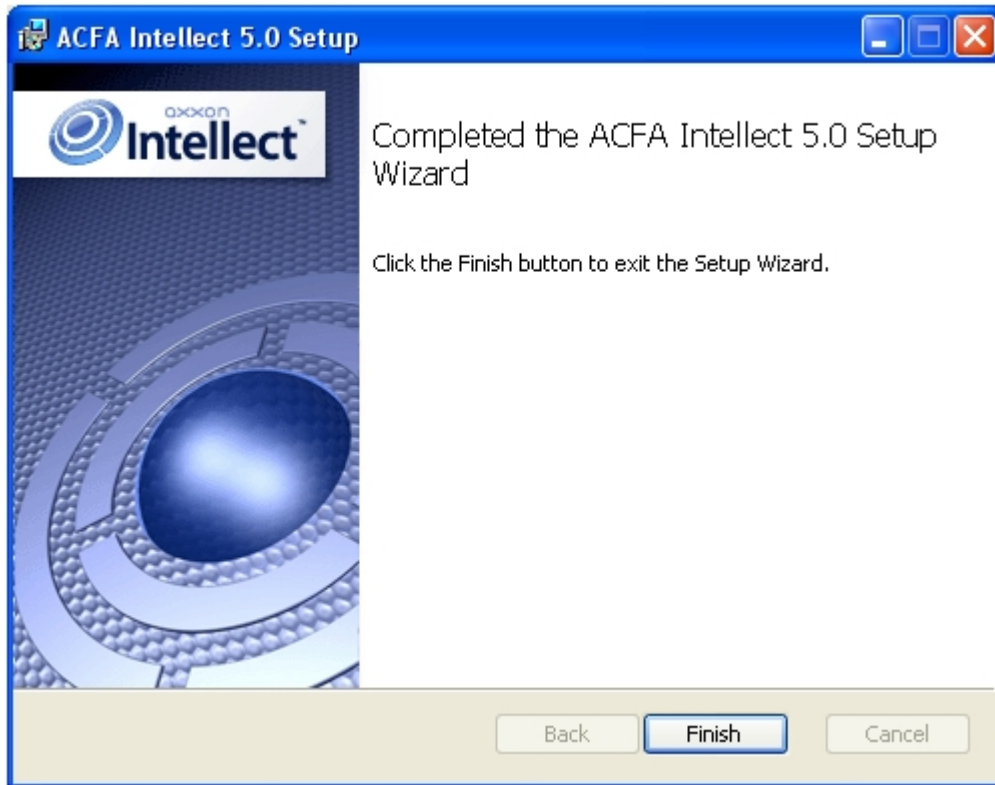
5. In the **Ready to change ACFA Intellect** dialog window start process of installing or removing selected components. To continue click the **Change** button.



6. Process of installing and/or removing required components of *ACFA Intellect* will be started.



7. When process of *ACFA Intellect* changing is completed the **Completed the ACFA Intellect Setup Wizard** dialog window is displayed. To exit installation program click the **Finish** button.

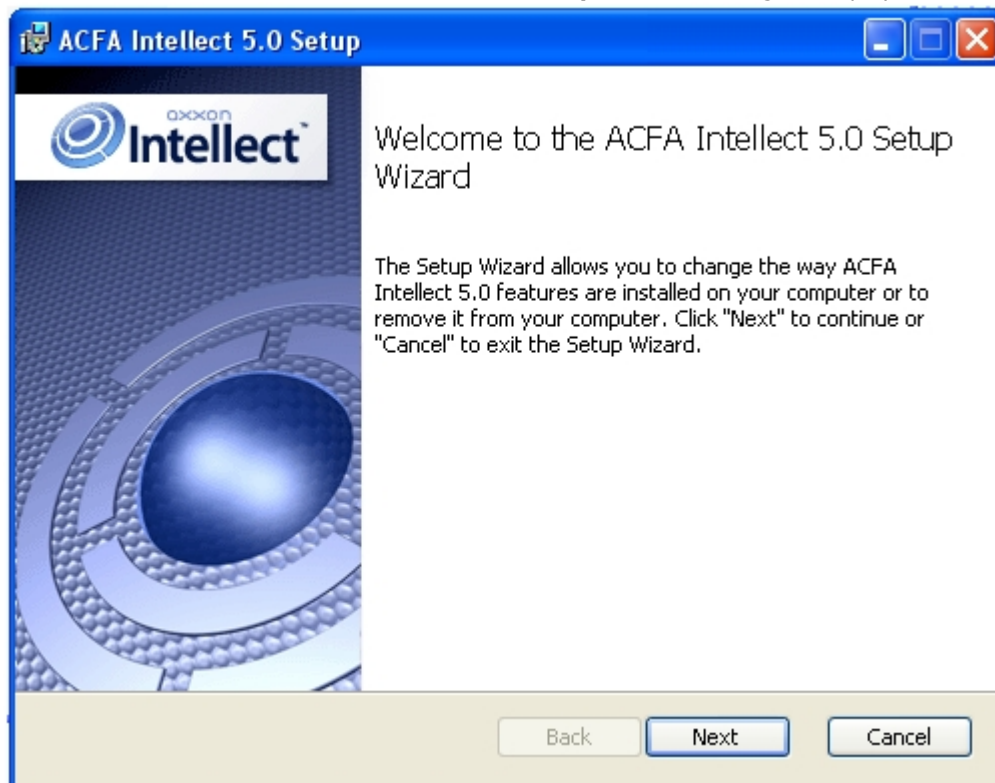


Change of *ACFA Intellect* software package is completed.

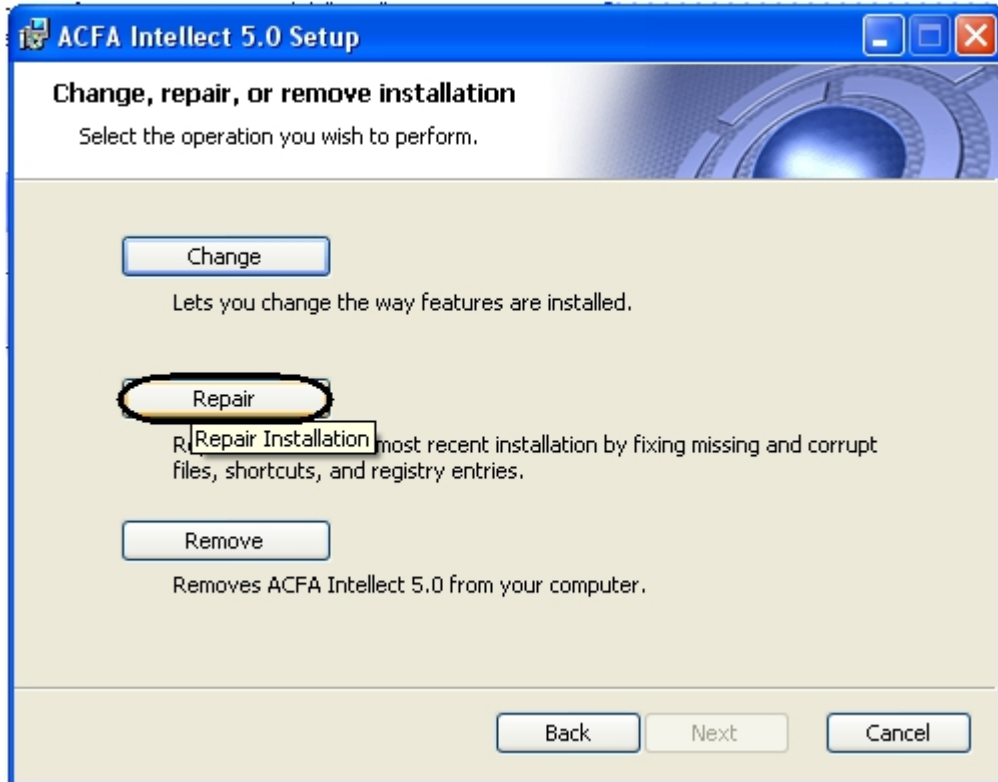
## Repairing of the ACFA Intellect software package

To correct mistakes occurred after the ACFA Intellect installation by repair failing files, tags and registry entries, do the following:

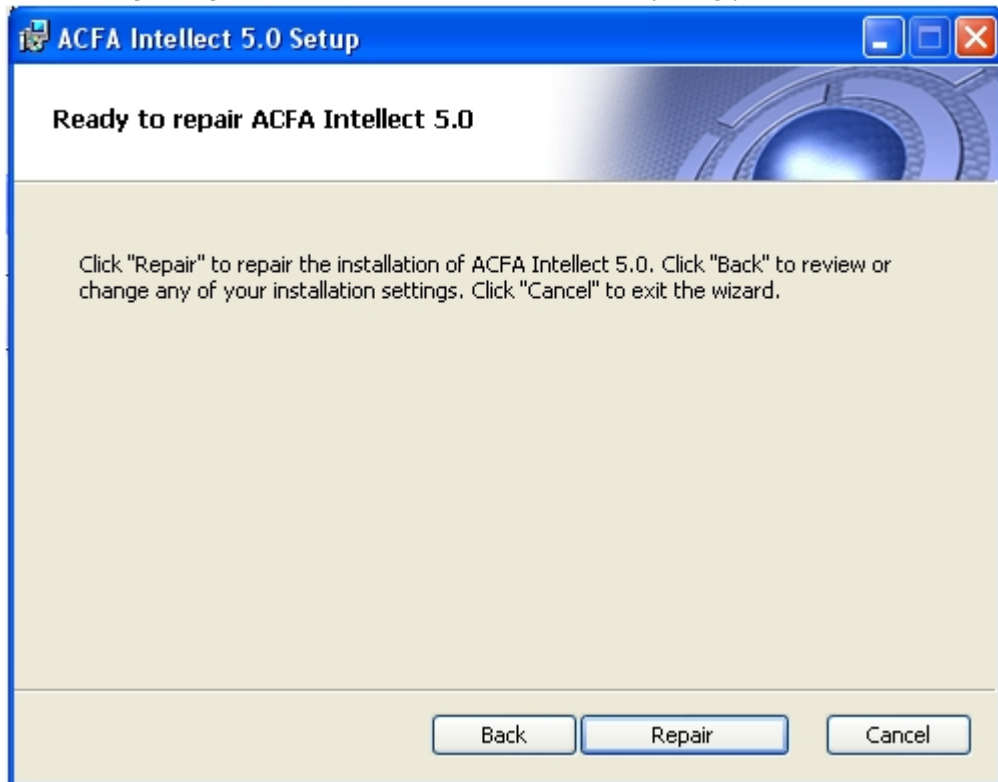
1. Start the setup.exe file from installer of installed *ACFA Intellect* version or select **Remove ACFA Intellect** item in the **Start -> Programs -> Intellect** menu.
2. Window with **Welcome to the ACFA Intellect Setup Wizard** message is displayed. Click the **Next** button.



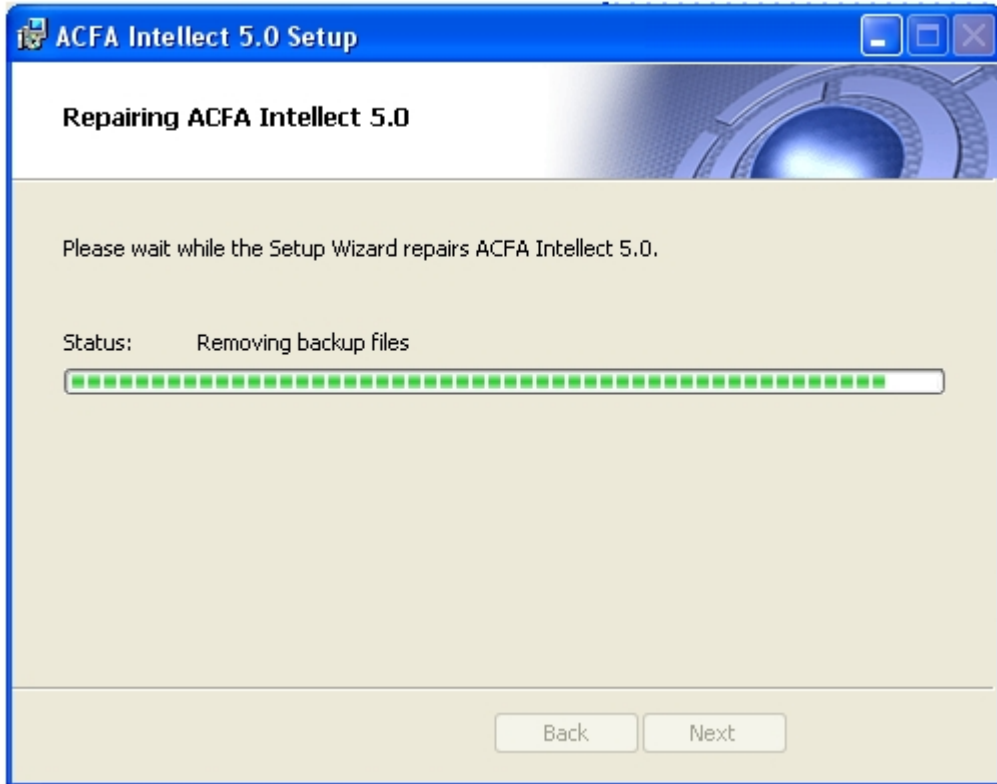
3. In the **Change, repair, or remove installation** window click the **Repair** button.



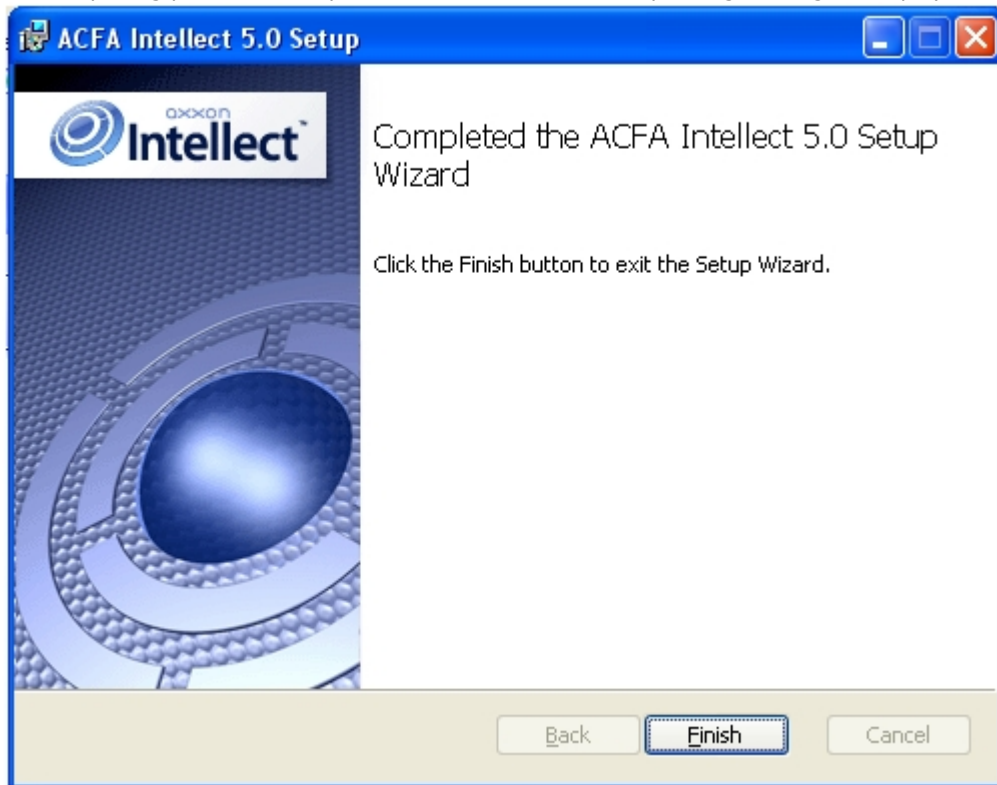
4. In the **Ready to repair ACFA Intellect** window start the repairing process. To do this click the **Repair** button.



5. Repairing process will be started.



6. When repairing process is completed the window with corresponding message is displayed.



Repairing of the *ACFA Intellect* software package is completed.

## Updating of the *ACFA Intellect* software package

To update the *ACFA Intellect* software package from versions which are differed from new version in the first number (e.g from version 4.8.8.to version 5.0), remove manually the old version of the *ACFA Intellect* software package and then install new version of product (see [Removing of the ACFA Intellect software package](#) and [Installation of the ACFA Intellect software package](#) sections).

Updating of the *ACFA Intellect* from version 5.0 and above is performed in standard mode (see [Installation of the ACFA Intellect software package](#) section).To start updating run the setup.exe file from installer of new version. When the *ACFA Intellect* updating it is possible to change installation of *ACFA Intellect* old version, add or remove some modules.



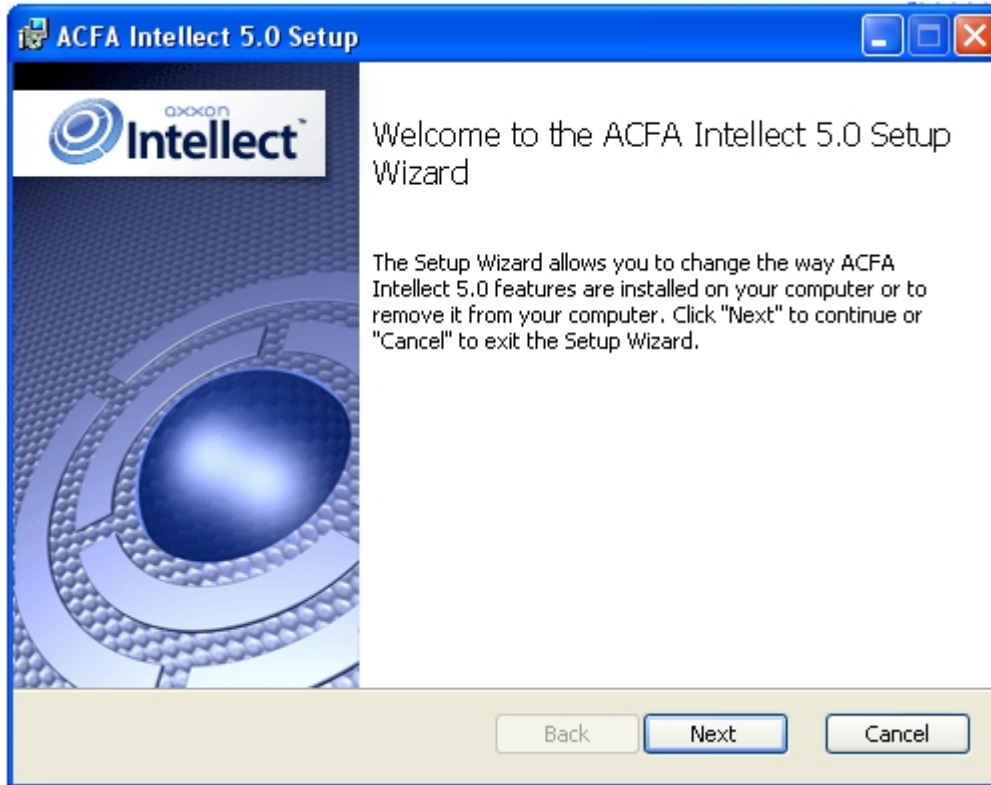
**Note.**

Change of installation is possible without updating the ACFA Intellect version (see Changing the ACFA Intellect software package).

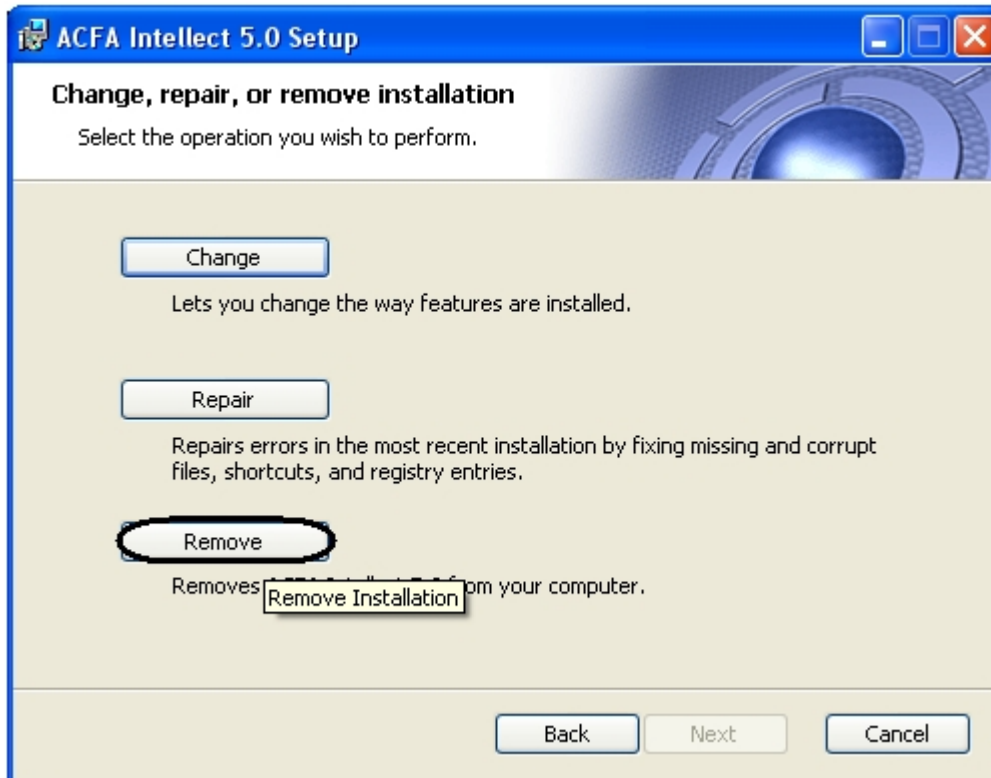
## Removing of the ACFA Intellect software package

To remove *ACFA Intellect* software package, do the following:

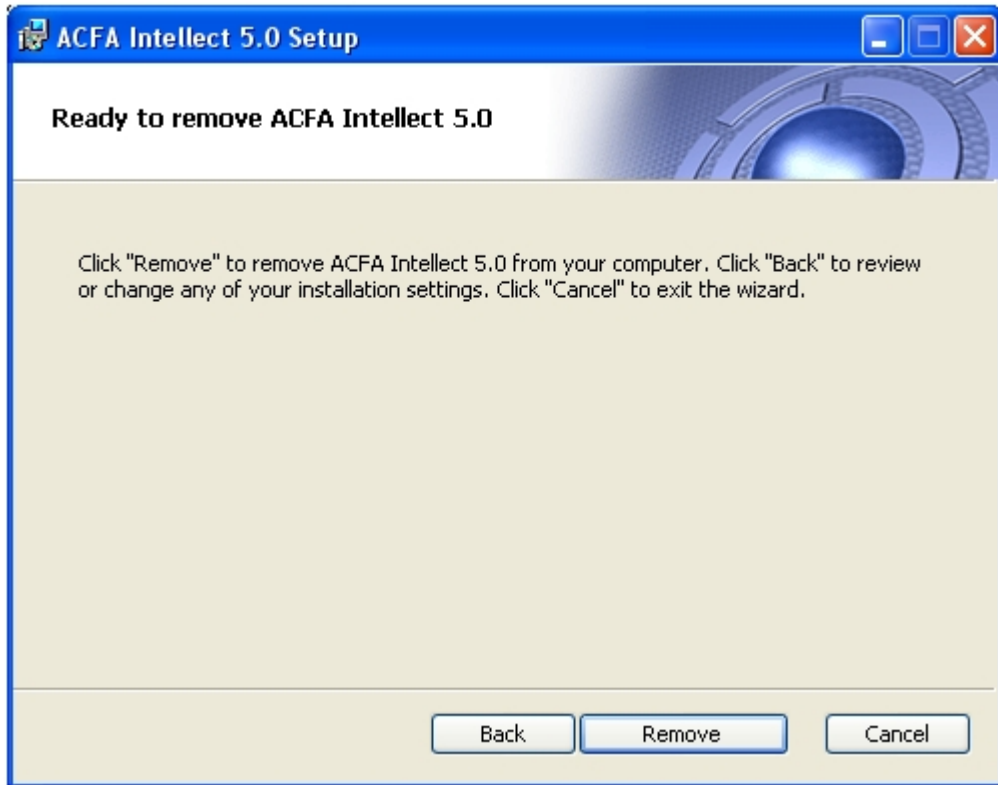
1. Run the setup.exe file from installer of installed ACFA Intellect version or select **Remove ACFA Intellect** item in the **Start -> Programs -> Intellect** menu.
2. Window with **Welcome to the ACFA Intellect Setup Wizard** message is displayed. Click the **Next** button.



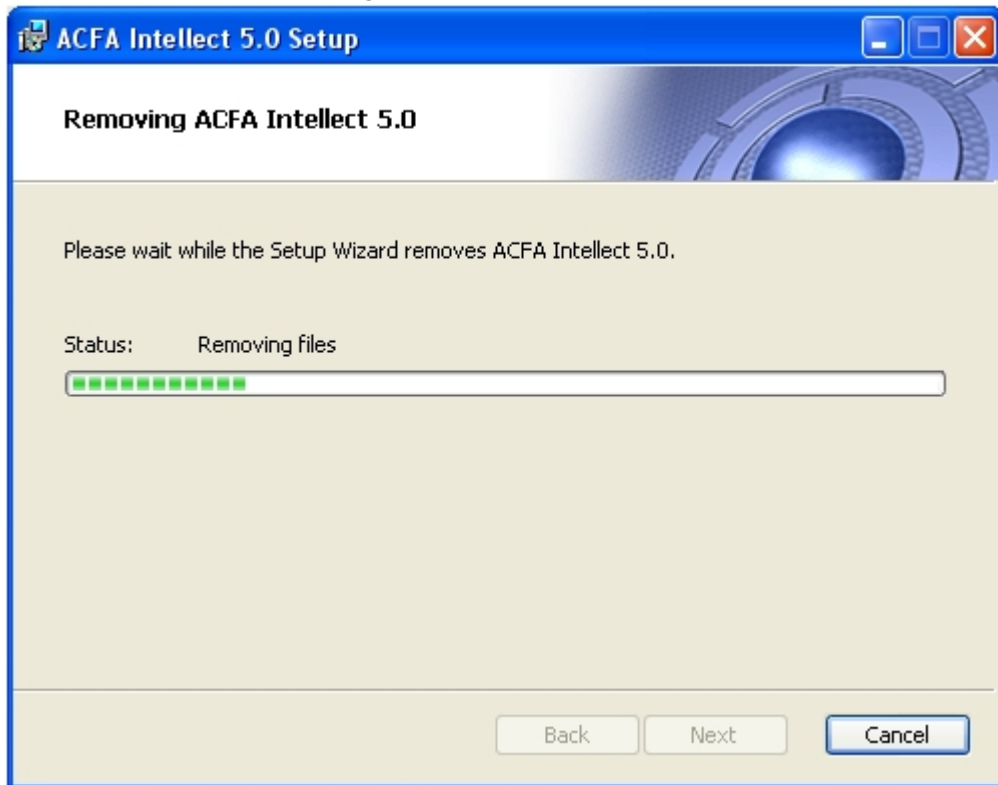
3. In the **Change, repair, or remove installation** window click the **Remove** button.



4. In the ready to remove *ACFA Intellect* window start the removing process. Click the **Remove** button.



5. Process of *ACFA Intellect* removing will be started.



6. When the removing process is completed the window with corresponding message is displayed. Click the **Ready** button.



Removing of the *ACFA Intellect* is completed.

## Installation of the ACFA Intellect software package in the silent mode

### On the page:

- [Install](#)
- [Update](#)
- [Remove](#)

It is possible to run *ACFA Intellect* in the silent mode (without user interface).

This type of installation is performed by setting the parameters of the Product.msi installation file in the Windows command line.



### Important!

This *ACFA Intellect* installation mode is available since version 6.4.3113.

### Install

The command to install all modules (if the previous version of *ACFA Intellect* was fully removed.):

```
msiexec /i Product.msi /quiet INSTALLLEVEL=2
```

or

```
msiexec /i Product.msi /qn INSTALLLEVEL=2
```



### Attention!

If *ACFA Intellect* was not removed, then these commands will update the components that are installed now.

By default menu icons and further *ACFA Intellect* installation are in English. To select Russian add the TRANSFORMS="Languages\Setup\ru\ru.mst" parameter in the command line, to select Spanish add the TRANSFORMS="Languages\Setup\es\es.mst" parameter. For instance:

```
msiexec /i Product.msi /quiet INSTALLLEVEL=2
TRANSFORMS="Languages\Setup\ru\ru.mst"
```

To install only the required *ACFA Intellect* components use the request that looks like this:

```
msiexec /i Product.msi /quiet
ADDLOCAL="base,Interop.IIDK_COMLib,ravelin_ru, sdk_orion_ru,account_manager_ru,event_m
anager_ru,agency_person_ru,photoidentification_ru,worktime_ru"
TRANSFORMS="Languages\Setup\ru\ru.mst"
```

where all required components are listed in the ADDLOCAL parameter. The full list of available components is given in the table.



**Note**

The module language is set with **ru**, **en** or **es** indication at the end of the component name.

Component	Module
base	<b>Required component, service modules</b>
Interop.IIDK_COMLib	<i>Component for ACFA Intellect server installation</i>
<b>Security Fire Systems</b>	
bacnetwrapper_ru, bacnetwrapper_en, bacnetwrapper_es	BACnet wrapper
dsc_ru, dsc_en	DSC
hunter_ru, hunter_en	HUNTER-PRO
nedap_retail_ru, nedap_retail_en	Nedap retail
opc_wrapper_ru, opc_wrapper_en	OPC Wrapper
optex_ru, optex_en	Optex
satel_ru, satel_en, satel_es	Satel
satel2_ru, satel2_en	Satel INTEGRA
cerberus_ru, cerberus_en	Siemens Cerberus ECO
snmpwrapper_ru, snmpwrapper_en	SNMP Wrapper
unipos5xxx_ru, unipos5xxx_en, unipos5xxx_es	UniPos 5100/5200
unipos_ru, unipos_en	UniPos 7002
zline_ru	Z-Line
vista_ru	Виста
vers_rs_ru	ВЭРС
detectomat_ru, detectomat_en	Detectomat
dozor_ru	Дозор 1А
dunai3_ru	Дунай
dunai2_ru	Дунай2
ncg9_ru,ncg9_en	Controller NCG-9
pl_ru, pl_en	Polon

chrysantemum_ru	ПРХК
raskat_ru	Раскат
rifstring_ru	Риф Стринг
rubezh_ru, rubezh_en	Rubezh FSA
rubezh_global_ru	Рубеж ГЛОБАЛ (Саратов)
rubicon_ru	Рубикон
start7_ru	СТАРТ-7
sintegral_ru	Стрелец-Интеграл
trombon_ru, trombon_en	Trombone SFA
umirs_ru	Юмирс
aritech_en	Aritech FP2000
fsg_en	FSG
telsap_en	Telsap 2100
<b>Access Control Systems</b>	
abc_ru, abc_en	AccessNet (ABC)
bsveins_ru	Biosmart UniPass
biosmart2_ru, biosmart2_en	BioSmart2
castle_ru, castle_en, castle_es	Castle
elsys_ru	Elsys
ravelin_ru, ravelin_en	Gate Parking
nc_ru, nc_en	Honeywell N-1000
impro_ru, impro_en	Impro
keywatcher_ru	KeyWatcher
nac_ru	NAC
octagram_ru	Octagram A1
pelco_ru, pelco_en, pelco_es	Pelco
perco_ru	Perco 12000
percos20_ru	PERCo-S-20
rusguard_ru	RusGuard
salto_ru, salto_en, salto_es	Salto
securiton_ru	Securiton
soyal_ru, soyal_en	Soyal
sphinx_ru, sphinx_en, sphinx_es	Sphinx
apda_ru	TempoReale
tss2_ru	TSS
kronverk_ru	Кронверк СМ-Т
nskat_ru	СКАТ
sintegral_web_ru	Стрелец-Интеграл. Web расширение
xabc_ru	Фортеця
evs_sk_ru	ЭВС

ansondb_en	AnsonDb
chomtech_en	Chomtech Access Control System
keyking_en	KeyKing
nitgen_en	Nitgen
paxton_net2_en, paxton_net2_es	Paxton NET2 ACS
suprema_en, suprema_es	Suprema
unicard_en	Unicard
velocity_en	Velocity
zk_en	ZK Teco
<b>AC/FA Systems</b>	
apl2_ru, apl2_en	Apollo SDK v.2
foxsec_ru, foxsec_en	FoxSec
hid_ru, hid_en, hid_es	HID Edge/VertX
galaxy_ru, galaxy_en, galaxy_es	Honeywell Galaxy Dimension
glx2_ru, glx2_en	Honeywell Galaxy Dimension v.2
paradox_ru, paradox_en	Paradox
pnet3_ru	ParsecNet 3
aiu3_ru	Rovalant 777 v.3
rovalant_a6_a16_ru	Rovalant A6-A16
orion_ru	Болид (SDK Орион v.1)
sdk_orion_ru	Болид (SDK Орион v.2)
rubeg8_isb_ru	Рубеж-08
rbg08_ru	Рубеж-08 v.2
winpak_en	WinPak
<b>Perimeter Intrusion Detection Systems</b>	
forteza_ru, forteza_en	Forteza
intrepid2_ru, intrepid2_en	Intrepid Grunt
intrepid3_ru, intrepid3_en	Intrepid II
arkan_ru	PREPONA-A
bagulnik2_ru	Багульник-М-УСО
ufdvolna_ru	Волна Альфа
pui32_ru	ПУИ-32
topol_ru	Тополь
xtralis2wayprotocol_en	ADPRO PRO
fft_en	FFT CAMS3
<b>Control readers</b>	
abc_cr_ru	ABC
castle_cr_ru	Castle
fs80cr_ru, fs80cr_en	FS-80
omnikey_ru, omnikey_en	HID Omnikey control reader

parsec_pr_x08_ru	Parsec
parsec_pr_p08_ru	Parsec PR-P08
perco_cr_ru	Perco
gate_cr_z2_ru	Z2
kodos_cr_ru	Кодос
ksu_cr_ru	КСУ
suprema_cr_en	Suprema BioMini control reader
<b>Application software</b>	
account_manager_ru, account_manager_en	Access Manager
virtual_acs_server_ru, virtual_acs_server_en	Virtual Access Server
event_manager_ru, event_manager_en, event_manager_es	Event Manager
dbimport2_ru, dbimport2_en	User Import
db_import_ru, db_import_en	Database Import/Export
an_ru, an_en	Security equipment
intellectnextbridge_ru, intellectnextbridge_en	Axxon Next data sender
support_temp_level_ru	Поддержка временных уровней доступа
agency_person_ru, agency_person_en, agency_person_es	Visitor Management System
worktime_ru, worktime_en, worktime_es	Time & Attendance
photoidentification_ru, photoidentification_en, photoidentification_es	Photo Identification
acfa_emulator_ru	Эмулятор ОПС/СКУД

## Update



### Important!

Only version 6.4.3113 (or later) can be updated.

Use this command in order to update all installed modules:

```
msiexec /quiet /i Product.msi
TRANSFORMS="Languages\Setup\ru\ru.mst"
```

## Remove

Use this command in order to remove all installed modules:

```
msiexec /x Product.msi
```

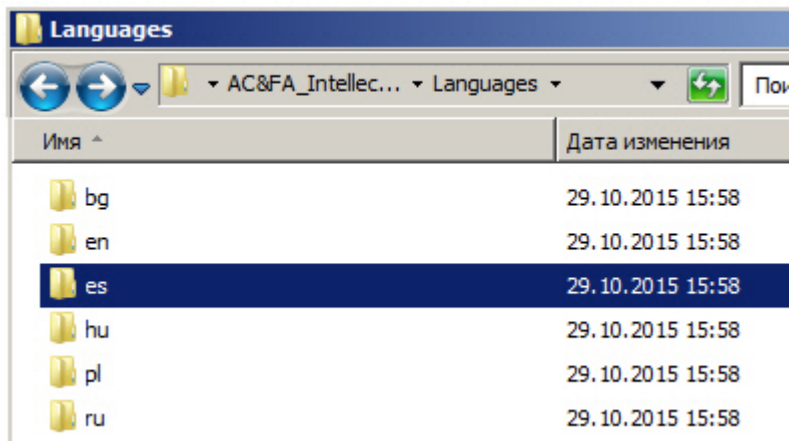
## Change of the ACFA Intellect localization language

On default the language of installer and installation language of the *ACFA Intellect* software package are defined on the basis of language which was in use while base *Intellect* installation.

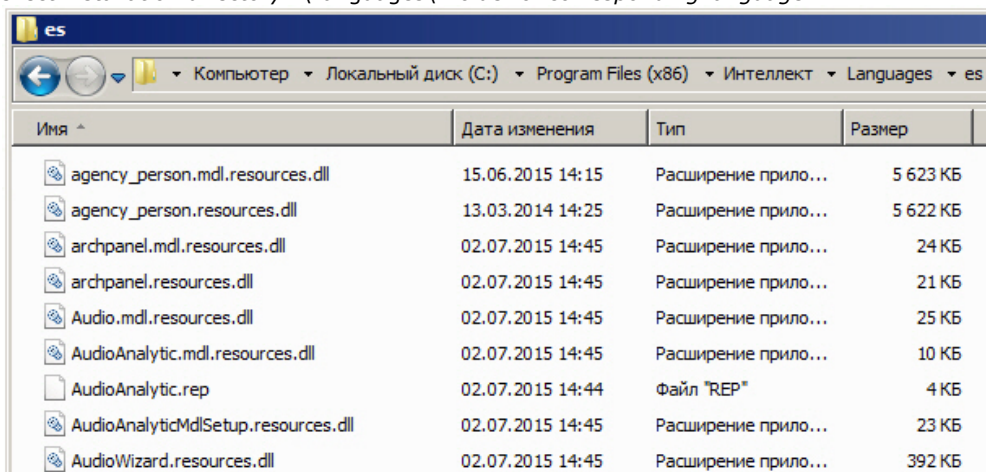
Procedure of changing the Intellect language is presented in the [Intellect Software System's interface language](#) section.

To change the *ACFA Intellect* language, do the following:

1. Download the [Language Pack for ACFA Module v.5.4](#) from the AxxonSoft web-site. The language pack contains localization files for the *ACFA Intellect* integration modules.
2. Extract files from the language pack. The **Language** folder contains subfolders corresponding to existed languages.



- From the folder corresponding to the required language copy localization files for all integration modules to the <Intellect installation directory>\Languages\<folder of corresponding language>.



- Update the database structure using the idb.exe utility (see the Interface elements of the idb.exe window section section).

Change of the ACFA Intellect localization language is completed.

Example of changing the ACFA Intellect language from english to spanish is follows.

The Intellect and ACFA Intellect software packages were installed in english. Using the language pack from the AxxonSoft web-site language of the Intellect software package was changed into spanish (see the Intellect Software System's interface language section). To change the ACFA Intellect localization language into spanish, copy localization files from the AC&FA\_Intellec.v.5.4\_lang\Languages\es folder to the <Intellect installation directory>\Languages\es and update the database structure.