



Quick Start Guide

Table of contents

1 Quick Start Guide. Introduction	3
1.1 Document purpose	3
1.2 Purpose of the Axxon Next software package	3
2 Installing the Software Package.....	4
3 Licensing the Software package	5
4 Starting and closing the Axxon Next software.....	6
5 Configuring the Axxon Next software package.....	7
5.1 Create Cameras.....	7
5.2 Creating Archive	8
5.3 Create and Configure Detection Tools.....	9
5.4 Configuring Users and Roles	10
5.5 Create and Configure Layouts.....	11
6 Operating the Axxon Next software package	13
6.1 Alarms Management	13
6.2 Search Video Footage	13
6.3 Export Snapshots and Video Recordings.....	16
6.4 Working with Map	16
6.5 ANPR and Search in Video Footage.....	17
6.6 Facial Recognition and Search in Video Footage	17
6.7 Receive Metadata from POS devices.....	18

1 Quick Start Guide. Introduction

1.1 Document purpose

This document, titled [Quick Start Guide](#)(see page 3), is intended to be used as a concise guide for installing and starting the *Axxon Next* software package as well as for configuring and using its main functions (video surveillance, audio surveillance, pan/tilt/zoom devices management).

More detailed information on the *Axxon Next* software package is presented in the document titled [User Guide](#)¹.

1.2 Purpose of the Axxon Next software package

Meet Axxon Next, a next-generation open-platform video management software (VMS). Thanks to exciting innovations from AxxonSoft, the Axxon Next platform has reached a whole new level of performance, reliability, efficiency, functionality and accessibility.

Video surveillance systems based on Axxon Next can scale infinitely: there are no restrictions on the number of video servers, workstations or video cameras. Axxon Next also plays well with other devices and systems.

Support for over 6000 models of IP devices including more than 1500 models of IP cameras integrated using proprietary protocol and 4500 ONVIF compliant devices is included, as well as remote access from mobile devices and a web interface.

Security needs of all sizes - from those of large-scale distributed facilities to the smallest sites - can be efficiently met with Axxon Next video management software. Every license includes full, unrestricted VMS functionality, even on systems of just one camera. Users on tight budgets will appreciate the free version of the program, which supports up to 4 camera channels.

¹ <https://docs.axxonsoft.com/confluence/display/next46en/User+Guide>

2 Installing the Software Package

To install the *Axxon Next* VMS, run the Setup.exe file with administrator rights.

The following three types of installations are available when installing *Axxon Next* to a personal computer:

1. **Client** – this type of installation is used for installing the software's user interfaces, which enable any user to connect to any Server within a single security system and to perform administration/management/monitoring of a guarded location based on the permissions granted by the administrator.
2. **Server and Client** – installs Client and Server services. *Axxon Next* Server:
 - a. Interacts with devices (cameras, microphones, sensors, relays, etc.) that constitute a security system.
 - b. Writes video footage to archives on system disks; interacts with archives on NAS.
 - c. Hosts VMDA database.
 - d. Employs detection tools to analyze live video.
 - e. Keeps configurations of the security system, user settings, custom layouts, macros, etc.
3. **Failover Server and Client** – installs Client and Server services enhanced with the FailOver capability. In emergency (power outage, network problems), the FailOver technology restores the Server configuration on another Server.

The following required software is installed, if necessary:

1. PostgreSQL database Server. A new log database is automatically created with the name – ngp, the username – ngp, and the password – ngp.
2. .NET Framework 2.0, .NET Framework 3.5 SP1 and .NET Framework 4.0.
3. Acrobat Reader, which is necessary for exporting in PDF format and printing freeze frames (see [Frame export²](#)).

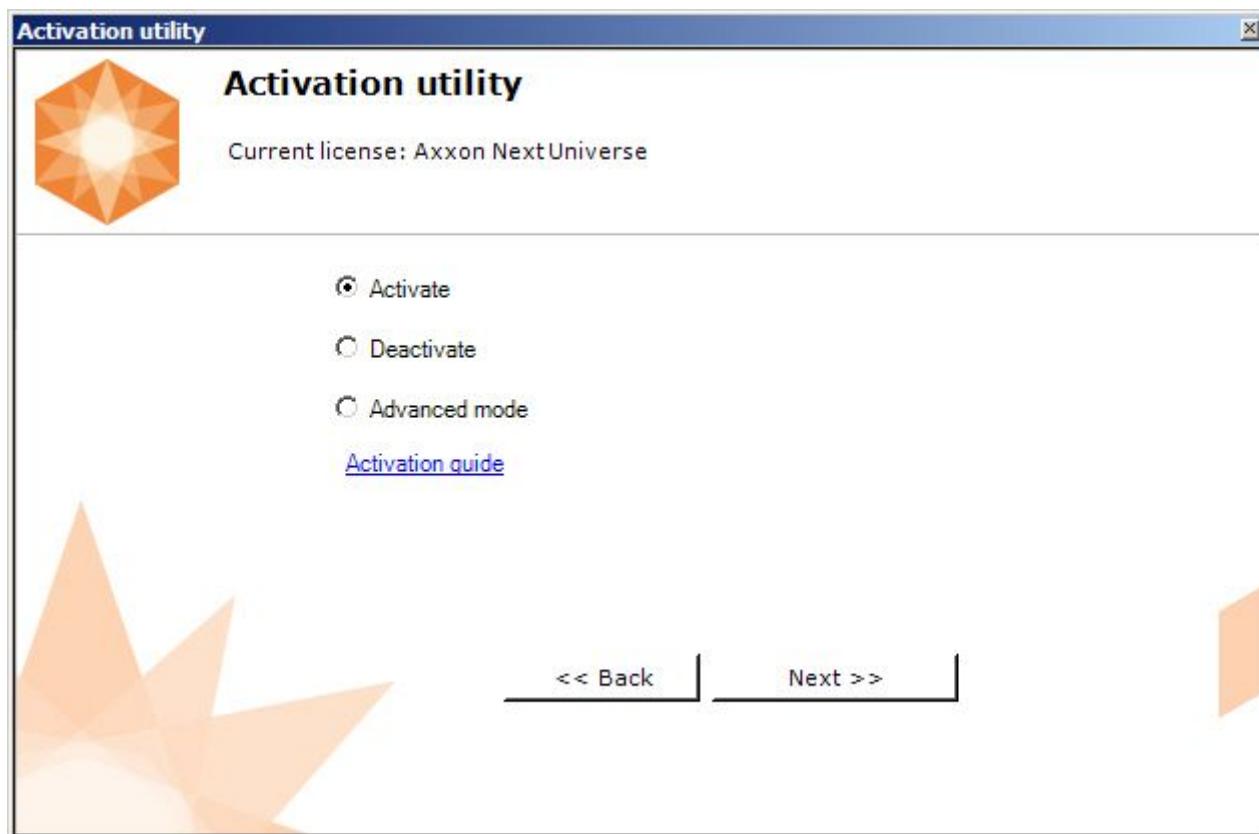
² <https://docs.axxonsoft.com/confluence/display/next46en/Frame+export>

3 Licensing the Software package

There are 5 types of *Axxon Next* license: **Demo**, **Free**, **Start**, **Professional**, and **Universe**. Upon installation, the software will be launched in demo mode. Worktime period is from 8 am to 6 pm.

You should activate Axxon Next VMS to utilize the full feature set of the security software package. You can activate the software by distributing an activation key on the system.

License activation for the *Axxon Next* software package is carried out through the corresponding utility. Launch the product activation utility using **Start** menu: **Start** → **All programs** → **Axxon Next** → **Utilities** → **Product activation**.



It is recommended that you read [Activation guide](#)³ providing step by step activation instructions.

³ <https://docs.axxonsoft.com/confluence/display/next46en/Activation+Guide>

4 Starting and closing the Axxon Next software

Check readiness for operation of the entire communication environment, cameras, microphones and other system components before starting the system.

To start working with the software, you must perform the following steps:

1. Go to **Start** → **All Programs** → **Axxon Next** → **Axxon Next**.

Axxon Next's Client will then launch and an authorization window will appear.

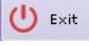
2. Enter your user name and password and click **Connect**.

Note

When logging into the system for the first time, use the user name **root**, which has administrator permissions. Enter "root" into the **User name** and **Password** fields. The administrator then needs to configure the system for multi-user access.

If authorization is successful, a video surveillance monitor will be displayed on the screen.

Before closing *Axxon Next*, you need to exit the user interfaces. To do this, you need to do one of the following:

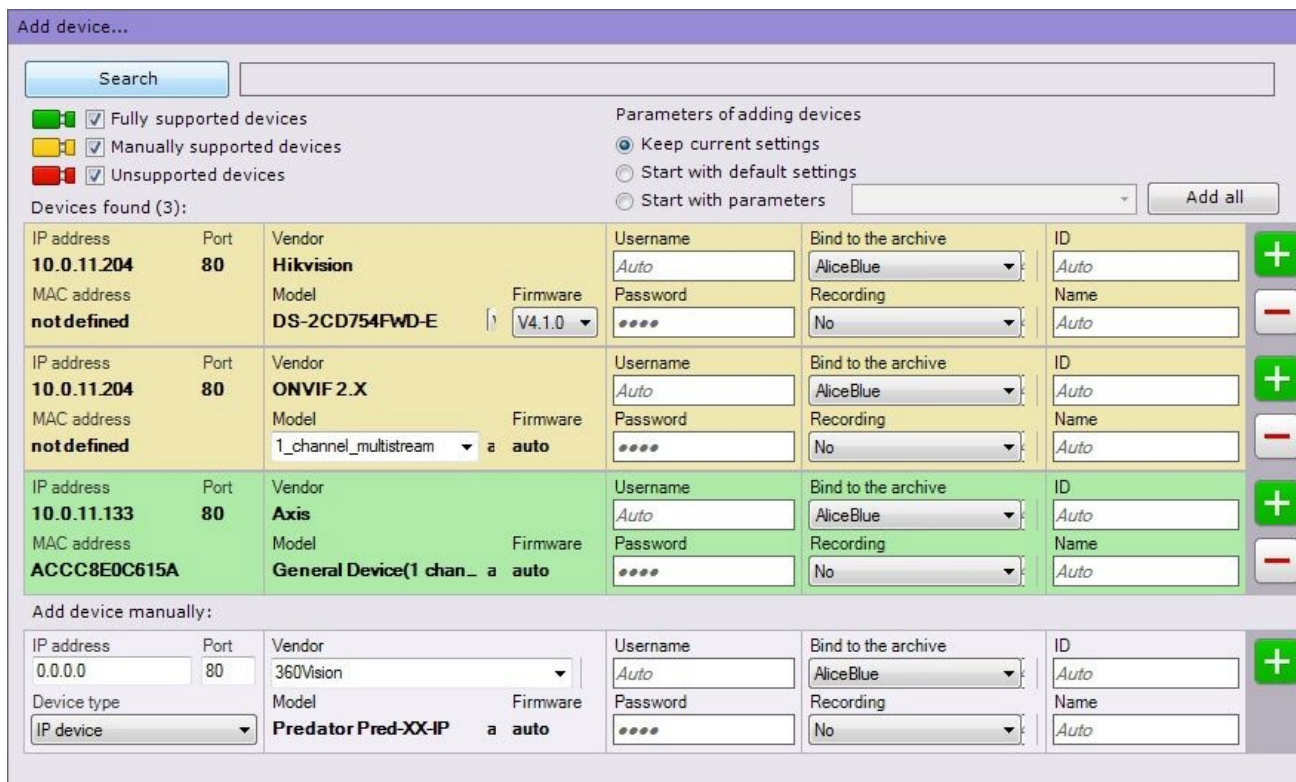
1. Click the  **Exit** button located under **Settings**.
2. In the Windows taskbar notification area, in the context menu of the Axxon Next icon, select **Close window**.

When you perform one of these actions, the authorization window will appear. To close *Axxon Next* (completely exit the client), click **Close**.




5 Configuring the Axxon Next software package

5.1 Create Cameras

You can add video cameras and IP servers to the system by using the IP Device Discovery Wizard.



The IP devices are color-coded based on the status of the device.

Color of video camera icon	Description
	Fully supported device
	Manual configuration required
	Axxon Next compatibility not guaranteed

When adding a device, you can immediately set several configuration options, such as:

- firmware version,
- username and password,
- object ID and name,
- archive and recording (non-stop or based on a time schedule).

In addition, three modes are available for adding a device to a configuration: with the default settings, with the current settings or custom settings.



To add one device, click the **Add all** button.

button. To add all devices, click

If an IP device is not shown in the search results (because it is located on another subnet or contact has been temporarily lost), you can add it manually. To do so, in the neutral-colored area above the search results, select the type of IP device that you are adding (with or without edge storage), specify an IP address and port, and select the manufacturer and model.

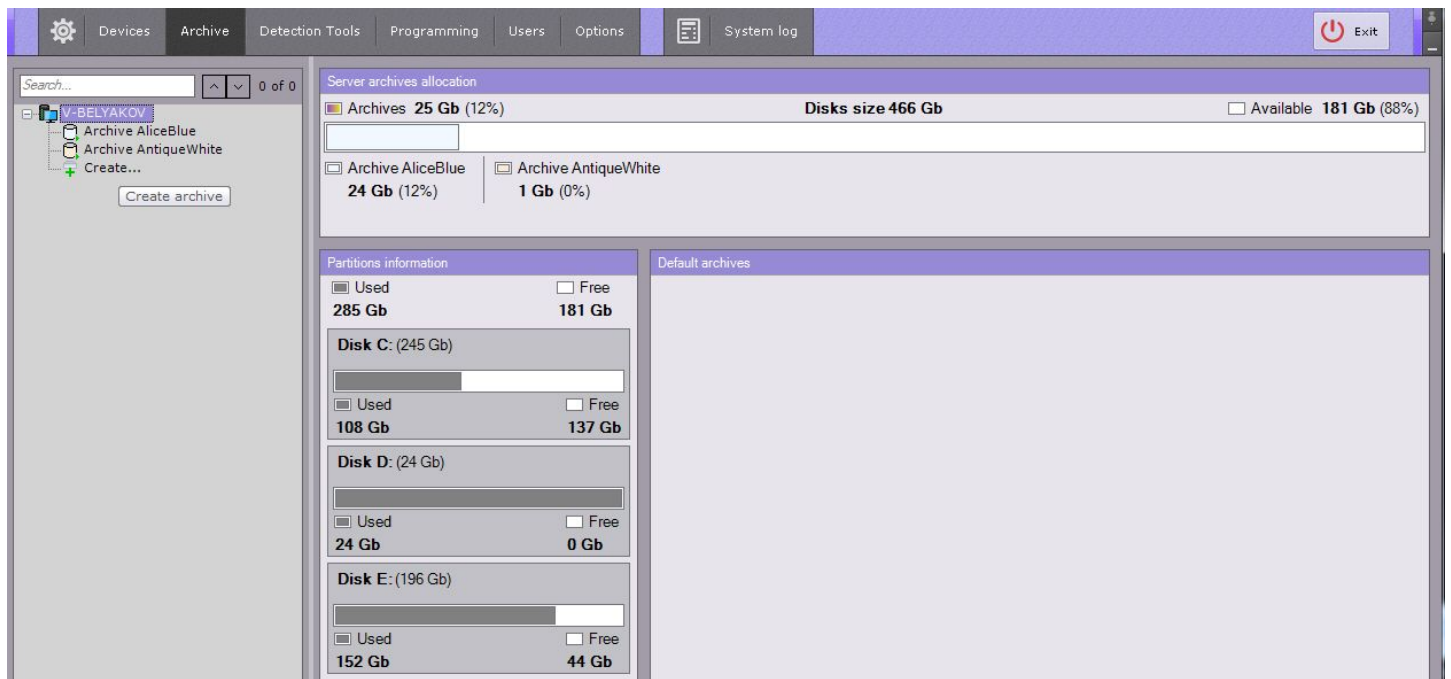
5.2 Creating Archive

On the base of one server you can create an unlimited number of archives. An archive can be placed on local disks or on network disks.

You can save a single archive volume of recorded video on each local drive. An archive volume is a file or an entire logical drive (with the proprietary SolidStore file system).

On network drives, you can save an archive volume only in the form of a file.

To create an archive, go to the **Archive** tab and click the **Create** link.



Configure the archive as follows: select the archive type, configure archive volumes, click the **Apply** button.

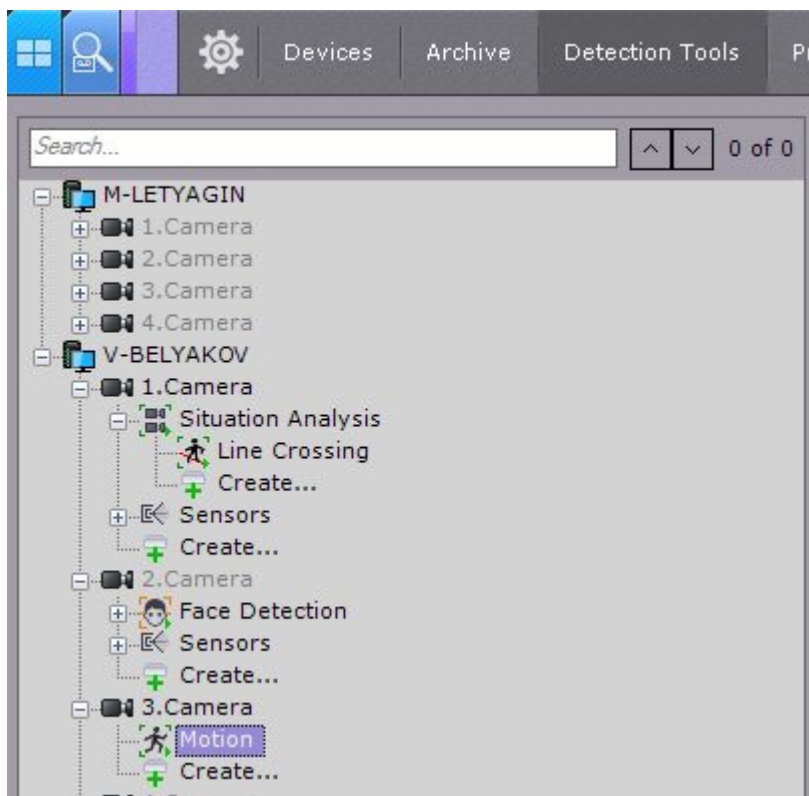
Configure the recording as follows: select the cameras, Configure recording settings

5.3 Create and Configure Detection Tools

In the Axxon Next software package, several types of detection tools process incoming data:

1. Scene Analytics detection tools;
2. facial recognition tools;
3. automatic number plate recognition tool;
4. basic detection tools:
 - a. Video analytics;
 - b. Audio analytics;
5. Detection tools embedded in a video camera.

You can configure detection in the **Detection Tools** tab.



To create a detection tool, click **Create** in the camera's object tree and choose a required tool.

To create **Scene Analytics** and the **Facial Recognition** detection tools, you need to create a respective object first. You create detection tools on the basis of these objects.

5.4 Configuring Users and Roles

In Axxon Next, every user has permissions based on their role.

By default, there is one role (**admin**) and one user (**root**). The **root** user belongs to the **admin** role and has rights to configure all components of the video surveillance system. To add a user with individual permissions, create a new role with the necessary permissions and then create a new user account.

Roles and users can be added and configured in **Settings**, on the **Users** tab.

The screenshot shows the 'Roles' configuration page in the Axon Next software. The left sidebar contains a tree view of roles, with 'Role' selected. The main panel displays the configuration for the selected role, organized into several sections:

- Basic**: Name (Role)
- Telemetry control**: Control priority (Minimum level)
- Map control**: Map management (View only)
- Access to Functions**:

Access to Search in archive mode	No
Adding camera to layout in monitor	No
Adding/editing presets	No
Alarms processing	No
Allow comments in archive	No
Export	No
Layouts editing	No
Minimize to taskbar	No
Operating Axon-domain	No
Permission to access via WebUI	No
System log	No
Unlock camera menu button	No
- Access to Settings**:

Archive settings	No
Detection settings	No
Device settings	No
Options settings	No
Programming setup	No
User Permission settings	No
- Access to Tabs**:

Layouts tab	No
-------------	----
- Video walls management**:

V-BELYAKOV	No
------------	----

There are two types of users: local (stored in the Server database) and [LDAP](#)⁴.

Roles configuration involves setting group and individual permissions for users' access to various system settings, features and hardware.

You can assign a role to a user and set permissions for the role.

5.5 Create and Configure Layouts

You can create and configure custom layouts for any user. Log into the Server under the appropriate user name and configure the layouts for that user.

New layouts are created based on standard layout types.



You can add video camera tiles and information boards (dashboards) to a layout. You can also attach a map, that will be automatically displayed when you switch to this layout.

⁴ https://en.wikipedia.org/wiki/Lightweight_Directory_Access_Protocol

The screenshot displays the Axxon Next software interface. On the left, three camera feeds are visible: '4.Camera' (top left), '5.Camera' (top right), and '6.Camera' (bottom left). The '6.Camera' feed includes a timestamp '20-05-2015 18:52:29'. On the right side, there are two panels: 'Event Board' and 'System Health Board'. The 'Event Board' shows a list of system events with timestamps and descriptions. The 'System Health Board' shows the status of three cameras: '4.Camera' (100% FPS), '5.Camera' (100% FPS), and '6.Camera' (78% FPS).

Time	Date	Event
14:16:55	15.06.2016	Finished recording to archive "Arc...
14:16:55	15.06.2016	Macro "2.Видеокамера. . Автома...
14:16:56	15.06.2016	Finished recording to archive "Arc...
14:16:56	15.06.2016	IP device "hosts/V-BELYAKOV/De...
14:16:56	15.06.2016	IP device "hosts/V-BELYAKOV/De...
14:16:56	15.06.2016	IP device "hosts/V-BELYAKOV/De...
14:16:56	15.06.2016	IP device "hosts/V-BELYAKOV/De...
14:16:56	15.06.2016	IP device "hosts/V-BELYAKOV/De...
14:16:56	15.06.2016	IP device "hosts/V-BELYAKOV/De...
14:46:33	15.06.2016	IP device "4.Camera" is connected
14:46:33	15.06.2016	IP device "4.Camera" is connected
14:46:45	15.06.2016	IP device "5.Camera" is connected
14:46:45	15.06.2016	IP device "5.Camera" is connected
14:46:55	15.06.2016	IP device "6.Camera" is connected
14:46:55	15.06.2016	IP device "6.Camera" is connected
14:47:15	15.06.2016	IP device "4.Camera", Signal res...
14:47:44	15.06.2016	IP device "5.Camera", Signal res...
14:47:50	15.06.2016	IP device "6.Camera", Signal res...



Camera	FPS	Depth	Average
4.Camera	100%	0 m	Average ...
5.Camera	100%	0 m	Average ...
6.Camera	78%	0 m	Average ...

6 Operating the Axxon Next software package

6.1 Alarms Management

All alert/alarm events are displayed on the **Alarms** panel.

The **Alarms** panel is at the top of the screen and you can see it only if there are active alarms. To open Alarms Panel, click the

 **Alert panel**  button.



When you classify an alarm (critical, non-critical, false, or missed), a flag is added to the alarm recording on the timeline. A flag is added to the point on the timeline when the alarm began.



6.2 Search Video Footage

You can search recorded video in two modes: the Archive mode and the Archive Search mode.

In the Archive mode (the **Playback** tab in the viewing tile), you can search video episodes using one of the two timelines.

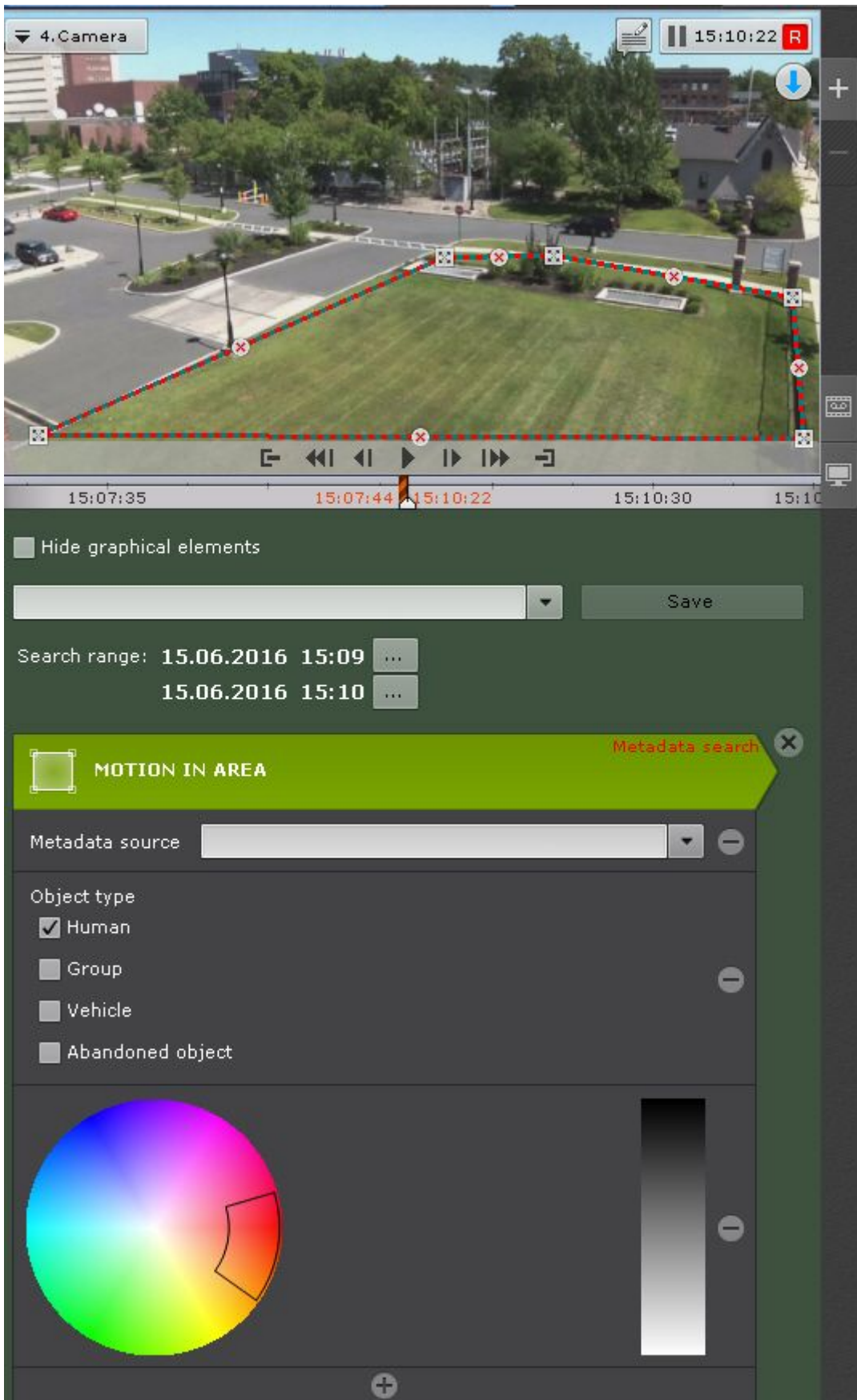
To navigate in the archive, left-click and drag the pointer to the point of interest.

In the Archive Search mode (the tab **Search**), you can set criteria (filters) to search video footage. You can choose from the following search filters:


1. Events search.
2. Time search.
3. Titles search.
4. Face search.
5. ANPR search
6. Forensic search.
7. Searching comments.


Forensic Search MomentQuest lets you search for video episodes using the following criteria:

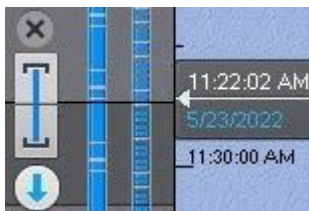
1. Motion in Area.
2. Loitering of an object in a specific area.
3. Simultaneous presence of a large number of objects in a specific area.
4. Crossing of a virtual line by an object's trajectory.
5. Motion from one area to another.



6.3 Export Snapshots and Video Recordings

You can export in one of the following two ways: set the export range in the archive or click  in the viewing tile.

You can select the export range on the timeline with the right-click or set it using the buttons .

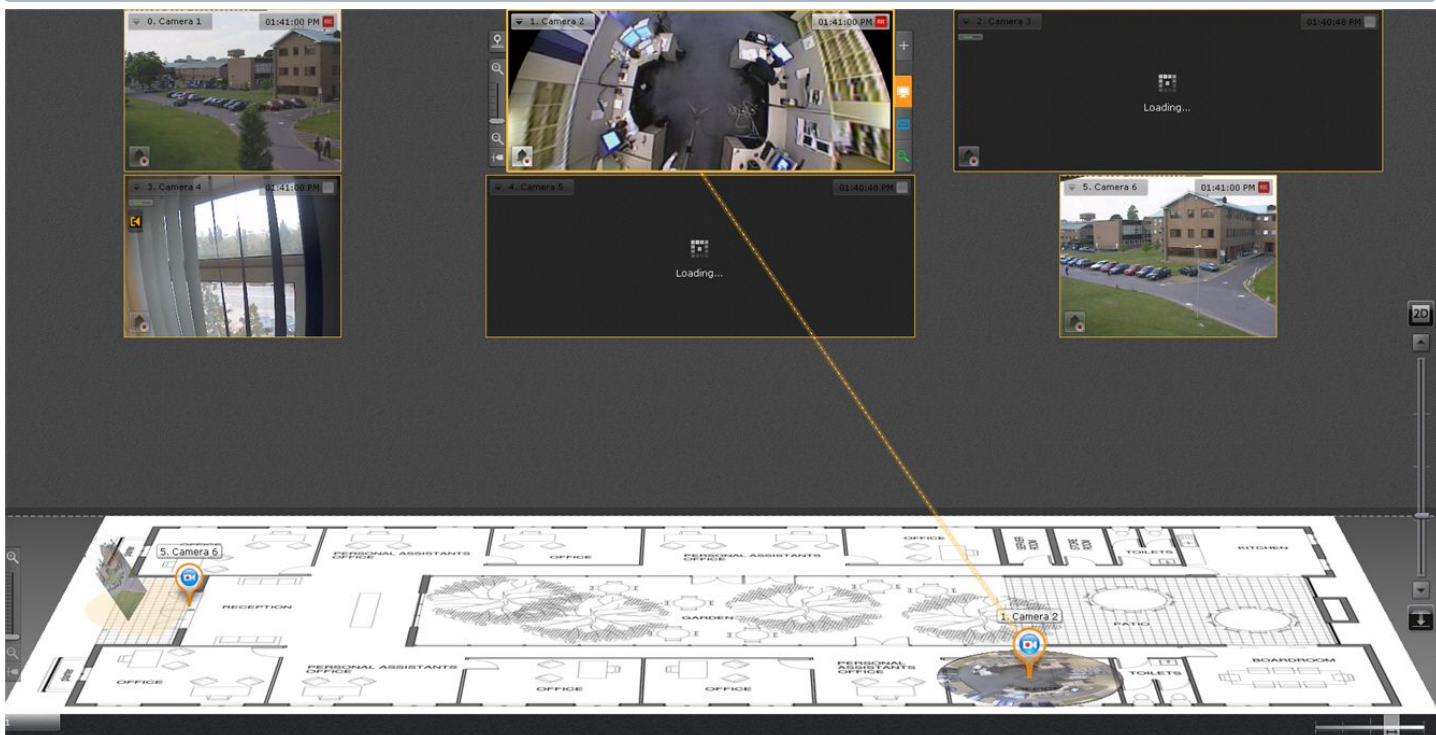


Snapshots can be exported to JPG and PDF, video can be exported to AVI, MKV and EXE formats. Exported video footage is digitally watermarked to prove the genuineness of the video recording.

6.4 Working with Map

The 3D interactive map is used to visualize the secured facility, control cameras and identify cameras' location. Interactive maps in Axxon Next can obtain image data from graphics of the site or geospatial data from OpenStreetMap.

Note
To work with OpenStreetMap maps in *Axxon Next*, you need to purchase an [OpenStreetMap](https://openstreetmap.org/)⁵ license.



The map can contain icons for cameras, relays, and sensors. The area in which live video is displayed and field of view are indicated for each camera.

The interactive map allows controlling the objects from the context menus of the graphical symbols on the map showing the states of the corresponding objects.

You can use the interactive map in three modes;

⁵ <http://www.openstreetmap.org/copyright>

1. 3D mode, in which both the map and layout are available
2. 2D mode, in which only the map is available
3. immersion mode, in which video is overlaid on the map

6.5 ANPR and Search in Video Footage

Automatic number plate / license plate recognition is performed by a special detection tool. ANPR / LPR event is a recognized number plate written to a database.

These events can be displayed in a layout on the Events Board or Message Board.

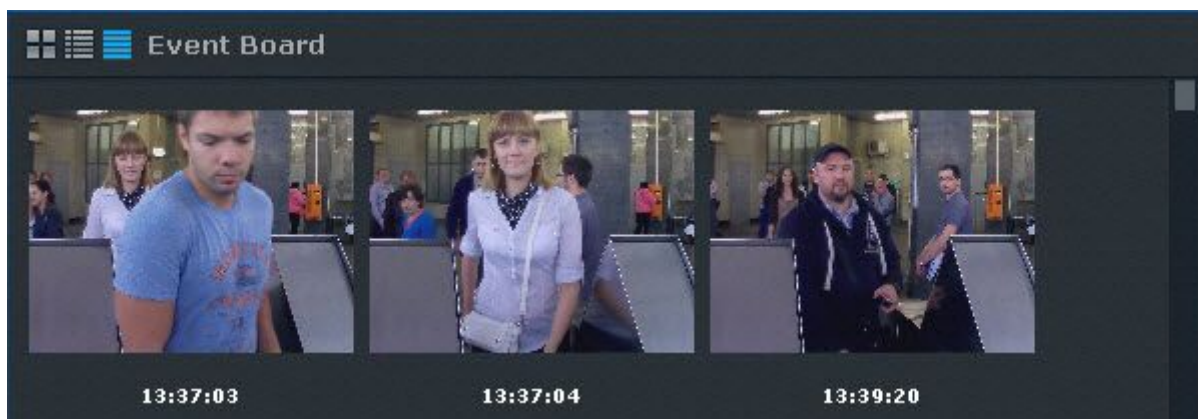


You can search ANPR events in recorded video from one or several cameras.

6.6 Facial Recognition and Search in Video Footage

Face recognition is performed by a special detection tool. A facial recognition (FR) event is a set of digitized face features written to a database.

These events can be displayed in a layout on the Events Board or Message Board.

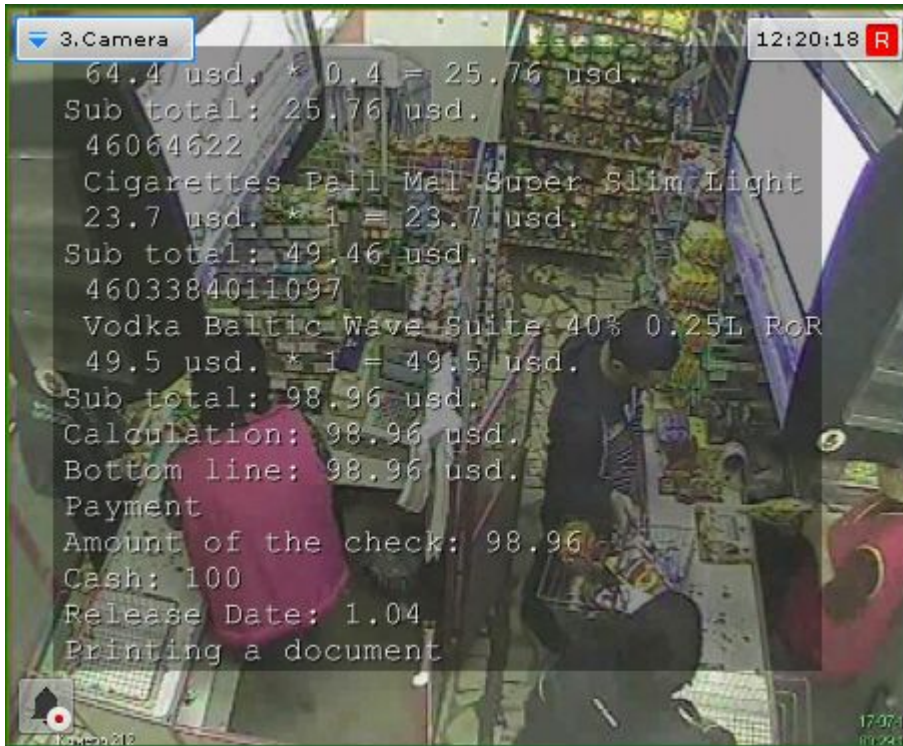


You can search FR events for similarity with an uploaded picture in recorded video from one or several cameras.

6.7 Receive Metadata from POS devices

You can configure *Axxon Next* to obtain data from POS devices.

If you have configured the titles overlay, the video tiles show titles superimposed on video. You can have titles from several POS terminals in the same camera window.



In the Archive Search mode, you can enter the keywords for titles and find relevant video recordings.