



DSC Integration Module Settings Guide

1. DSC Integration Module Settings Guide	3
1.1 Introduction into DSC Integration Module Settings Guide	3
1.2 Supported hardware and licensing of the DSC integration module	3
1.3 Configuration of the DSC integration module	4
1.3.1 Configuration procedure for the DSC integration module	4
1.3.2 Configure the connection of the DSC FSA to the ACFA Intellect software package	4
1.3.3 Create objects tree of the DSC FSA integration module	5
1.4 Working with DSC FSA integration module	5
1.4.1 Control the DSC controller	6
1.4.2 Control the DSC partition	6
1.4.3 Control the DSC zone	7

DSC Integration Module Settings Guide

Introduction into DSC Integration Module Settings Guide

On the page:

- Purpose of the document
- General information about the DSC FSA integration module

Purpose of the document

The *DSC FSA integration module settings guide* is a reference manual designed for *DSC* module users.

This module is a part of a *Fire Security Alarm (FSA)* built on the *ACFA Intellect* Software System.

This Guide presents the following materials:

1. general information about the *DSC FSA* module;
2. *DSC FSA* module settings;
3. working with the *DSC FSA* module.

General information about the *DSC FSA* integration module

The *DSC FSA integration* module is part of *FSA* subsystem built based on the *ACFA Intellect* Software System. It is designed to control *DSC* system.

Note.

Detailed information about the *DSC PC-1864* controller can be found in the official documentation.

Before start of working with the *DSC FSA* integration module, install the controller on the site and configure it using its keypad or in the *DLS 5* manufacturer software.

Supported hardware and licensing of the *DSC* integration module

Manufacturer	3301 Langstaff Road Concord, Ontario, Canada tel. (905) 760-3000 fax (905) 760-3004 http://www.dsc.com/
Integration type	Low-level protocol
Equipment connection	RS-232

Supported equipment

Equipment	Function	Features
DSC PC-1864	Control panel	8 on-board zones 8 partitions 95 user codes 500 events template programming

Module licensing

For 1 controller, 8 partitions and 512 zones.

Configuration of the DSC integration module

Configuration procedure for the DSC integration module

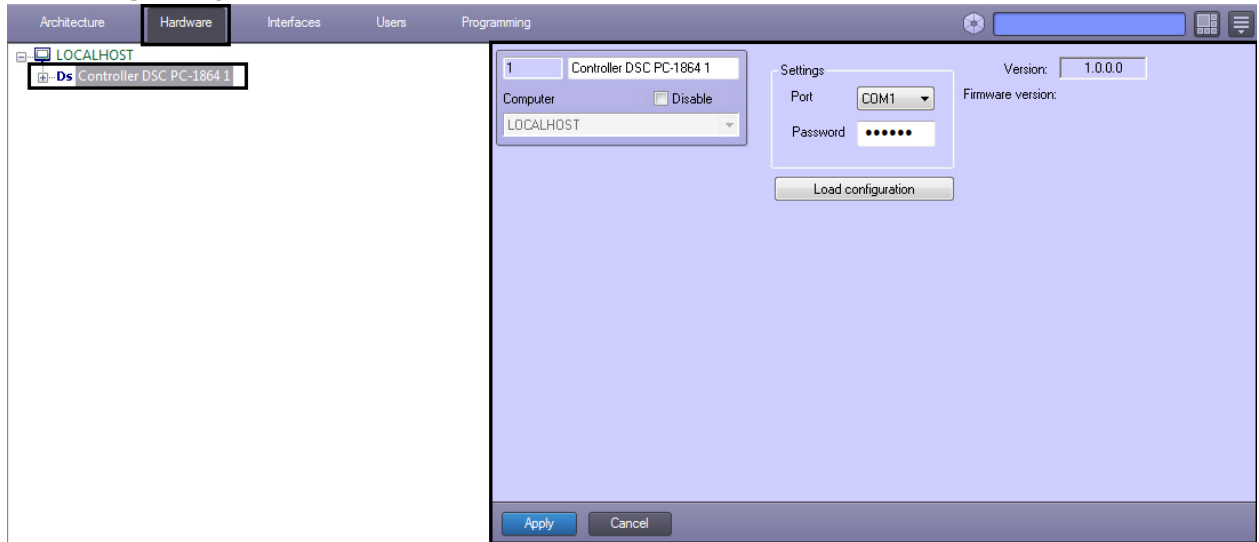
The *DSC FSA* integration module is configured as follows:

1. Configure the connection of the *DSC FSA* to the *ACFA Intellect* software package.
2. Create objects tree of the *DSC FSA* integration module.

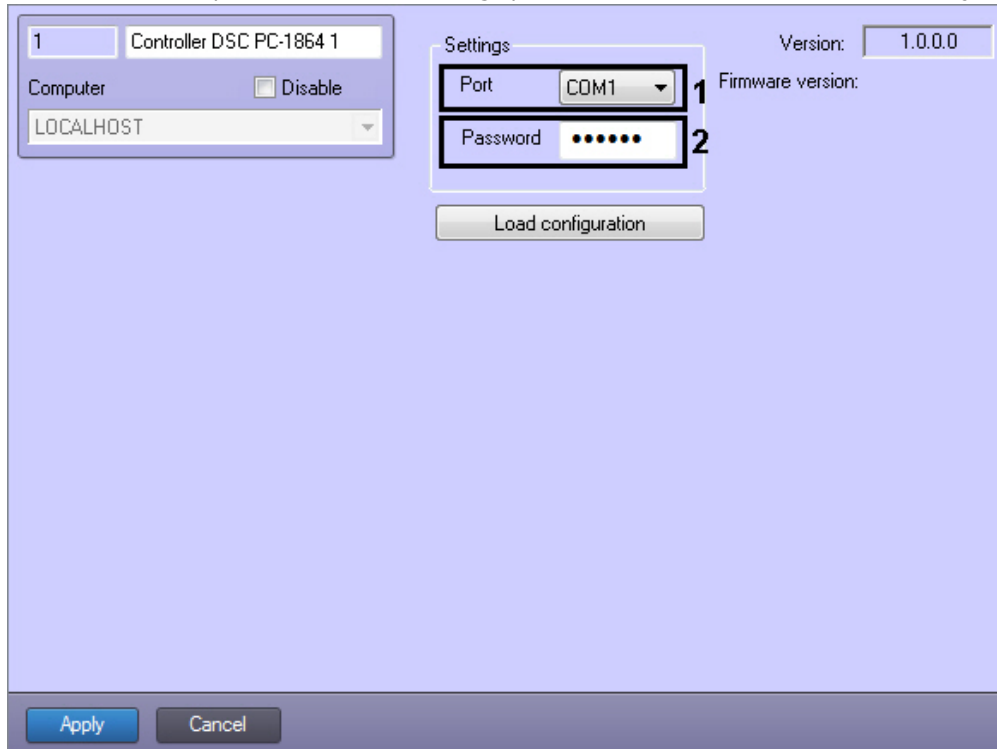
Configure the connection of the DSC FSA to the ACFA Intellect software package

To configure the connection of the *DSC FSA* to the *ACFA Intellect* software package, do the following:

1. Create the **Controller DSC PC-1864** object on the basis of the **Computer** object on the **Hardware** tab of the **System settings** dialog window.



2. Set the connection parameters on the settings panel of the **Controller DSC PC-1864** object:



1. From the **Port** drop-down list select the port number of connection the controller to the *ACFA Intellect* Server (**1**).

- In the **Password** field enter the password to connect controller and the *ACFA Intellect* software package (2). The password is specified when controller is configuring.
- Click the **Apply** button.

Configuring the connection of the *DSC FSA* to the *ACFA Intellect* software package is completed.

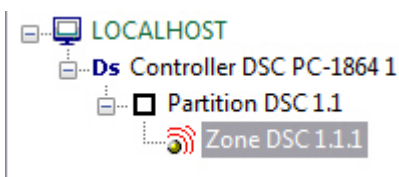
Create objects tree of the DSC FSA integration module

To create objects tree of the *DSC FSA* integration module, do the following:

- Go to the settings panel of the **Controller DSC PC-1864** object.

- Click the **Load configuration** button. In the opened window select the .xml file corresponding to the required configuration and click the **Open** button. Configuration file is created in the *DLS 5* vendor software on the **Zones** tab clicking the **Export** button (see vendor documentation)

As a result the objects tree of the *DSC FSA* integration module will be created.



For correct initializing of partition or zone, specify the valid address on settings panel of the corresponding object.

Note.

It is possible to create not more than 8 **Partition** objects and 64 **Zone** objects.

Working with DSC FSA integration module

The following interface objects are used for working with the *DSC FSA* integration module:

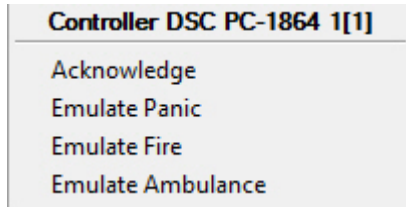
1. **Map;**
2. **Events protocol.**

Information about **Map** and **Events protocol** interface objects' configuration is given in the [Intellect Software Package: Administrator's Guide](#).

Working with these interface objects is given in details in [Intellect Software Package: Operator's Guide](#).

Control the DSC controller

Control the *DSC* controller is carried out in **Map** interactive box using feature menu of **Controller DSC PC-1864** object.

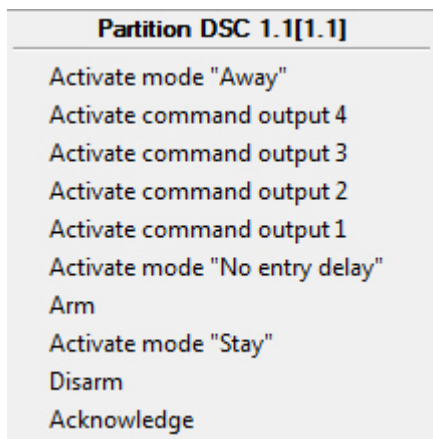


Available commands in the context menu are described in the table.

Command	Description
Acknowledge	Processes alarm
Emulate Panic	Sends the Panic command to the control panel
Emulate Fire	Sends the Fire command to the control panel
Emulate Ambulance	Sends the Ambulance command to the control panel

Control the DSC partition

Control the *DSC* partition is carried out in **Map** interactive box using feature menu of **Partition DSC** object.



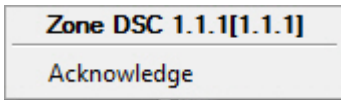
Available commands in the context menu are described in the table.

Command	Description
Activate mode "Away"	Arms partition when the exit delay through the access zone is enabled
Activate command output 4	Enables output programmed to control via command 4
Activate command output 3	Enables output programmed to control via command 3
Activate command output 2	Enables output programmed to control via command 2
Activate command output 1	Enables output programmed to control via command 1
Activate mode "No entry delay"	Disables delay for entry
Arm	Arms partition

Activate mode "Stay"	Arms partition
Disarm	Disarms partition apart from specified zones
Acknowledge	Processes alarm

Control the DSC zone

Control the *DSC* zone is carried out in **Map** interactive box using feature menu of **DSC Zone** object.



To process alarm select the **Acknowledge** command in the context menu.