



FoxSec Integration Module Setup and User Guide

Last update 18/01/2021

Table of contents

- 1 Introduction into FoxSec Integration Module Setup and User Guide3**
- 1.1 Purpose of the Document.....3
- 1.2 General information on the FoxSec integration module3
- 2 Supported hardware and licensing of the FoxSec integration module4**
- 3 Configuring the FoxSec integration module.....5**
- 3.1 Pre-configuring the FoxSec integration module5
- 3.2 Steps to Configure the FoxSec Integration Module5
- 3.3 Configuring the ACS FoxSec Connection5
- 3.4 Importing configuration and automatic creating the object tree.....6
- 3.5 FoxSec users import.....7
- 3.6 Configuring the FoxSec ACS's doors8
- 4 Working with the FoxSec Integration Module9**
- 4.1 General information on working with the FoxSec Integration Module.....9
- 4.2 Managing FoxSec door.....9

1 Introduction into FoxSec Integration Module Setup and User Guide

On the page:

- [Purpose of the Document](#)
- [General information on the FoxSec integration module](#)

1.1 Purpose of the Document

The *Setup and User Guide for the FoxSec Integration Module* is a reference guide for administrators and operators of the *FoxSec* module. This module is part of access control systems (*ACS*) implemented based on the *ACFA Intellect* software package.

This Guide contains:

1. general information on the *FoxSec* integration module;
2. guidance on how to configure the *FoxSec* integration module;
3. guidance on how to work with the *FoxSec* integration module.

1.2 General information on the FoxSec integration module

The *FoxSec* integration module is part of *FSA* and *ACS* systems based on *ACFA Intellect* software package. The module is used for establish interacting between the *FoxSec ACS* and the *ACFA Intellect* software package (monitoring, control).

Note.

Detailed information on the *FoxSec ACS* can be found in the vendor documentation.

Before configuring the *FoxSec* integration module, do the following:

1. Install the *FoxSec ACS* hardware at the secure facility (refer to the *ACS FoxSec* reference documentation).
2. Connect the *FoxSec ACS* to the *Intellect Server* (refer to the *ACS FoxSec* reference documentation).

2 Supported hardware and licensing of the FoxSec integration module

Manufacturer	FoxSec Tel: (372) 666-14-00 E-mail: info@foxsec.eu http://www.foxsec.eu/ru/
Integration type	Low-level protocol
Equipment connection	Ethernet

Supported equipment

Equipment	Function	Features
FS9000	Main panel	<ul style="list-style-type: none"> 16 zone inputs (expandable up to 240) Up to 240 security areas 8 programmable relay outputs (24V/5A/NO/NC) (expandable up to 240) 2880 users Access only 4- or 6- digit PIN number or PIN number and card Data communication 10 MB Ethernet 1 separate optically isolated data line for connection of up to 14 in / 8 out expansion modules 64 time and keyboard restriction groups 2500 event memory
FS7002PX (MK)	Door controller	<ul style="list-style-type: none"> 2 doors (up to 4 readers) 2 doors outputs (5A) 2 programmable additional relay output Up to 1850 card users and 500 last event memory Compatible card readers: 26-bit Wiegand format reader (PX), magnetic strip reader (MK)
FS7011PX (MK)	Door controller	<ul style="list-style-type: none"> Access with card and/or user code from R915 Arm using card and/or user code from R915 Access control of one door (it is possible to connect reader, output button, door contact and lock) Only 4 wires to connect R910 or R915 readers Firmware updating from PC through CV4USB using WinLoad Auto opening door by schedule Information about opened doors and tampers Timers of door opening and prolonged delay Manual opening of door by button or by event of RGM output activation Doors opening while fire alarm «Safety mode» option (module works with 4 specially programmed access cards while losing connection with panel) Imbedded impulse AC on 1,5A Button of power output control Works with 4-wires 26-bit Wiegand readers

Protection

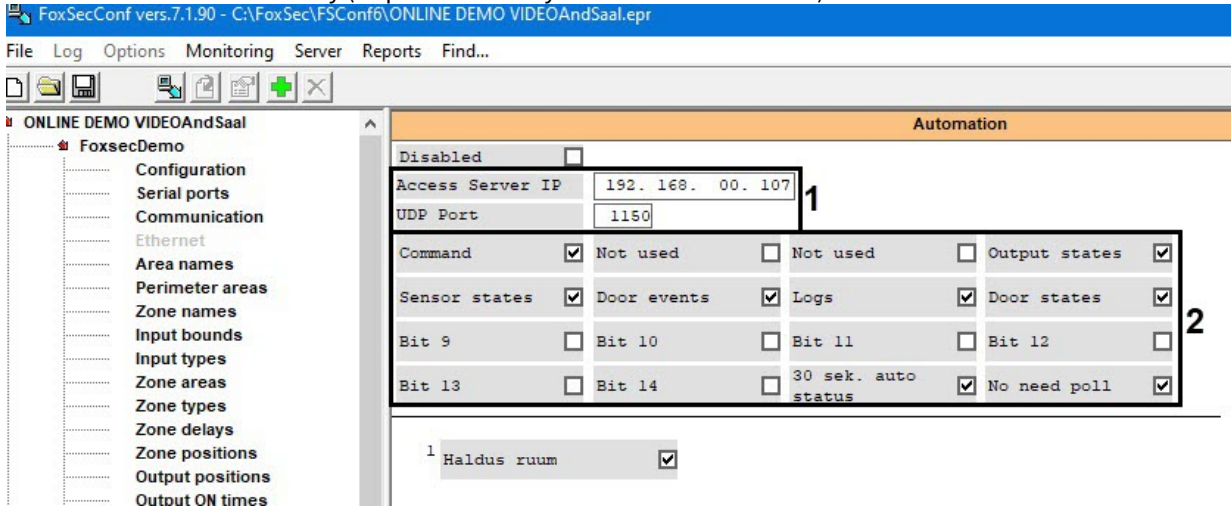
For parent object.

3 Configuring the FoxSec integration module

3.1 Pre-configuring the FoxSec integration module

Pre-configure the *FoxSec* integration module as follows:

1. Run the FoxSecConf.exe utility (request this utility from the manufacturer).



2. Set the IP address and port of the *ACFA Intellect* server (1).
3. Check the boxes as shown in the image to get the corresponding events and states (2).

Attention!

It is strictly forbidden to check the boxes in any other way.

The *FoxSec* integration module is pre-configured.

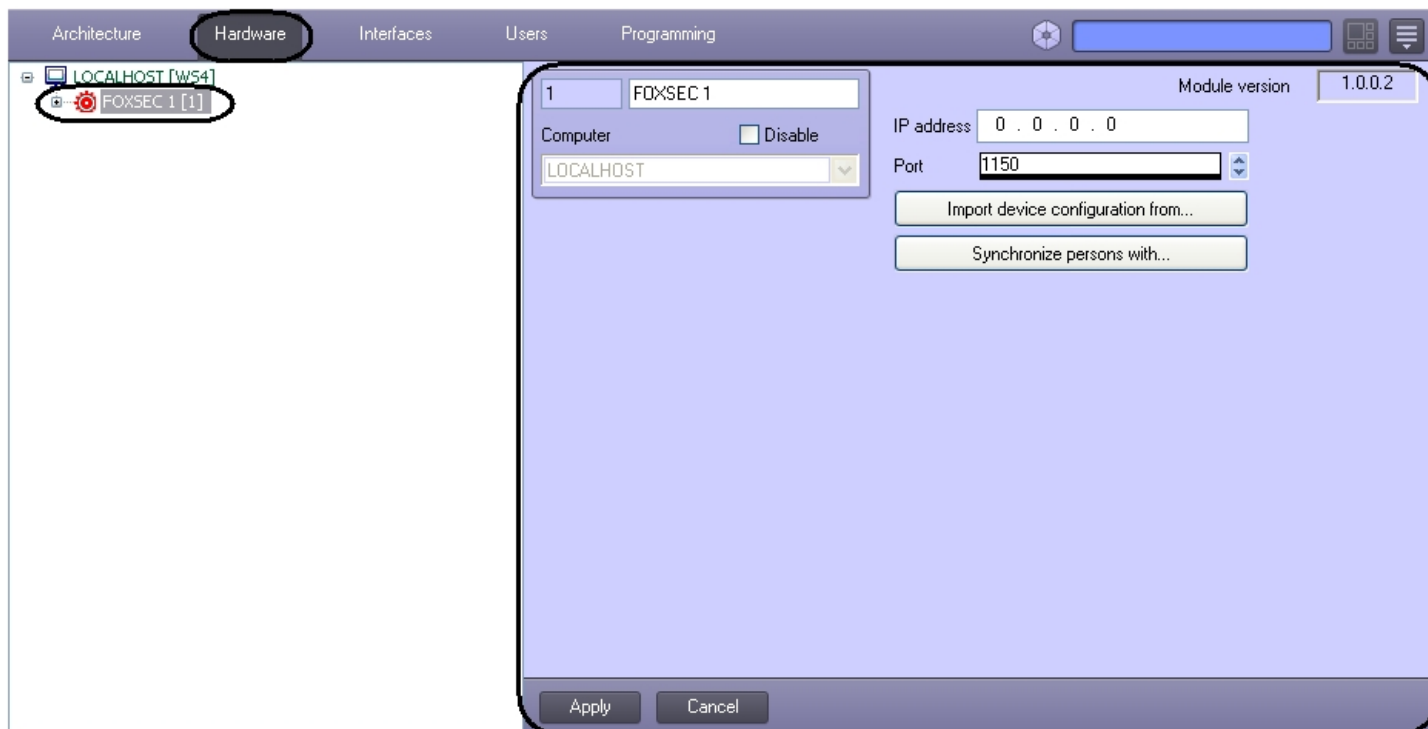
3.2 Steps to Configure the FoxSec Integration Module

To configure the *FoxSec* integration module:

1. [Configure the ACS FoxSec connection to the Intellect Server.](#)
2. [Importing configuration and automatic creating the object tree.](#)
3. [Users import.](#)
4. [Configure the ACS FoxSec doors.](#)

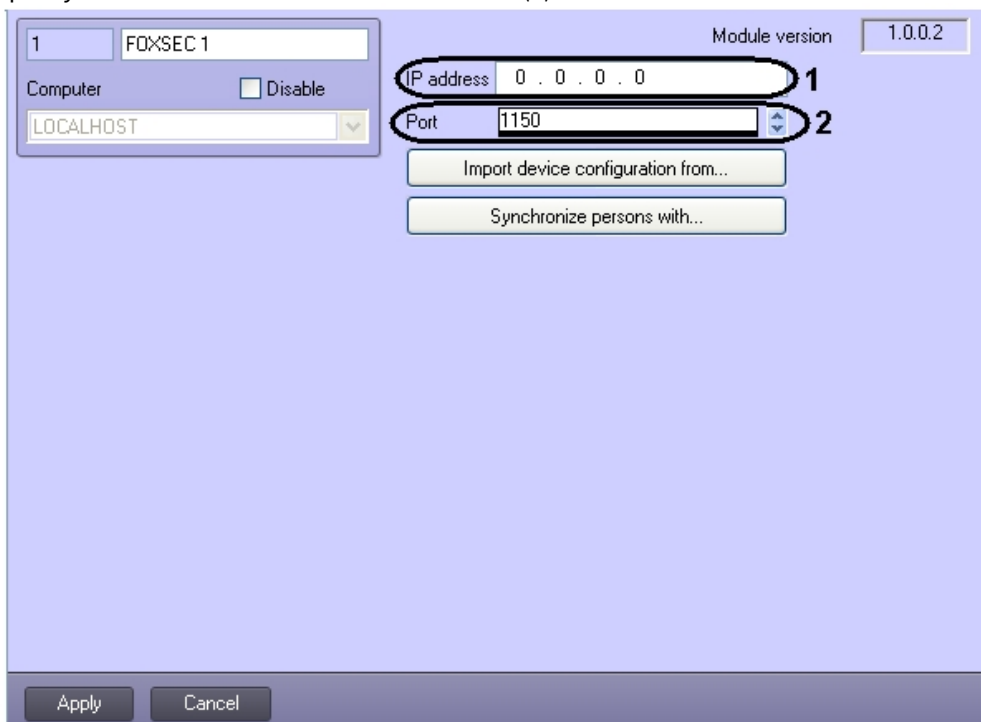
3.3 Configuring the ACS FoxSec Connection

To configure the *ACS FoxSec* connection, use the relevant **FOXSEC** object. To create this object, go to the **Settings** dialog box, click the **Hardware** tab, and select the parent **Computer** object.



To configure the *FoxSec* integration module's connection, do the following:

1. Specify IP-address of the *FoxSec* ACS hardware (1).



2. Specify the port of connection the *FoxSec* ACS to the *ACFA Intellect* software package (2).
3. Click the **Apply** button.

Configuring the *FoxSec* ACS connection is completed.

3.4 Importing configuration and automatic creating the object tree

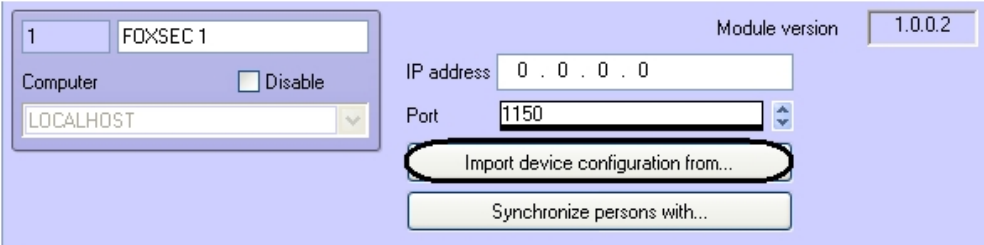
It is possible to import configuration from the *FoxSec* ACS vendor software. After configuration import the *FoxSec* objects tree will be automatically created.

Attention!

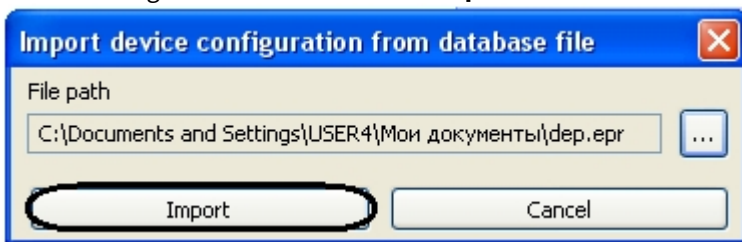
Objects created manually will be removed while reading configuration from the file.

To read configuration from the file, do the following:

1. Click the **Import device configuration from...** button on the **FOXSEC** settings panel.



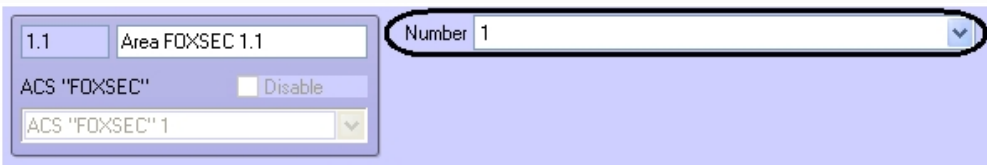
2. Select a configuration file and click the **Import** button.



As a result configuration will be imported and the *FoxSec* objects tree will be created.

Note.

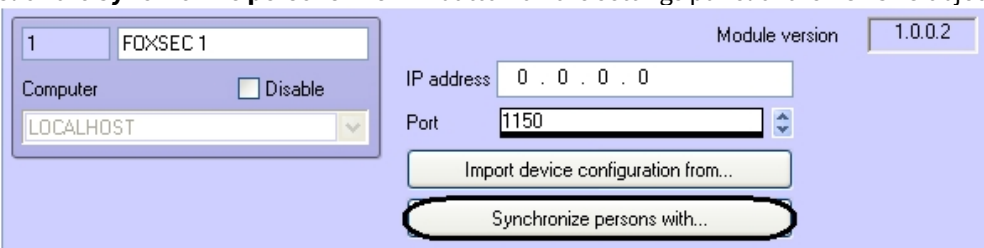
It is possible to create the object tree manually. To do this create objects on the basis of the **FOXSEC** object. It is required to specify the number of door, area or zone correctly.



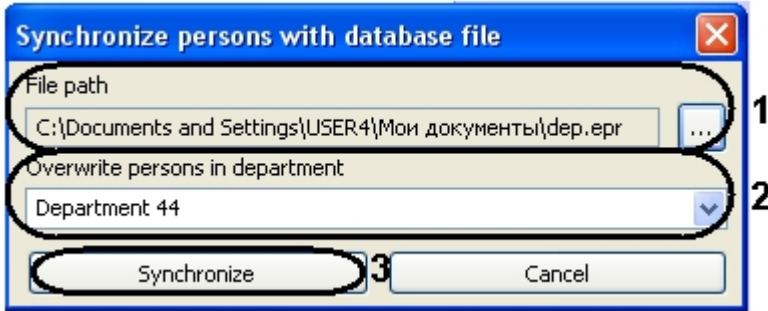
3.5 FoxSec users import

It is possible to import users from the *FoxSec* vendor software to the *ACFA Intellect* software package. Do the following:

1. Click the **Synchronize persons with ...** button on the settings panel of the **FOXSEC** object.



2. Select file with users (1).



3. Select department to which users are to be added (2).

Attention!

Other users which belong to the selected department will be removed while importing. If some users are to be saved it is recommended to replace users to another department or create new empty department for users from the FoxSec ACS software.

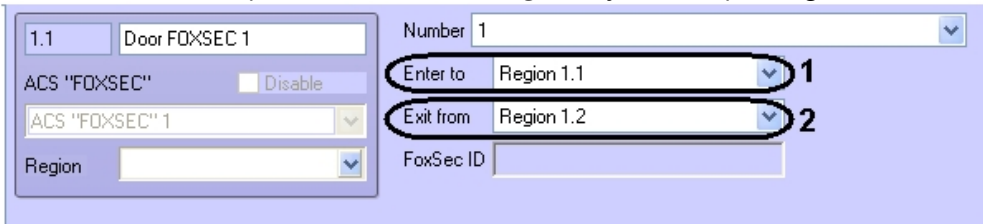
4. Click the **Synchronize** button (3).

Import of users is completed.

3.6 Configuring the FoxSec ACS's doors

For the *FoxSec ACS* doors it is required to specify the following parameters on settings panel of the **FOXSEC Door** object:

1. From the **Enter to:** drop-down list select the **Region** object corresponding to the area to which entry is performed (1).



2. From the **Exit from:** drop-down list select the **Region** object corresponding to the area from which exit is performed (2).
3. Click the **Apply** button.

Configuring the *FoxSec ACS* doors is completed.

4 Working with the FoxSec Integration Module

4.1 General information on working with the FoxSec Integration Module

To work with the *FoxSec* integration module, use the following interface objects:

1. **Map;**
2. **Event log;**
3. **Visitor management system.**

The information on how to configure these interface objects can be found in the [Intellect Software Package: Administrator's Guide](#) and the [Visitor Management System Module Settings and Operation Guide](#).

The detailed information on how to work with the GUI objects can be found in [Intellect Software Package: Operator's Guide](#).

4.2 Managing FoxSec door

To manage a *FoxSec* door, go to the **Map** window and use the menu of the relevant **Door FOXSEC** object. To open the door select the corresponding item of object context menu.

