



Honeywell (WIN-PAK CS) Integration
Module Setup and User Guide

1. Key Terms used in Honeywell (WIN-PAK CS) Integration Module Setup and User Guide	3
2. Introduction into Honeywell (WIN-PAK CS) Integration Module Setup and User Guide	3
3. Configuring the Honeywell (WIN-PAK CS) Integration Module	4
3.1 Procedure for configuring the Honeywell (WIN-PAK CS) integration module	4
3.2 Configuring a connection to a Honeywell (WIN-PAK CS) ACS/FSA	4
3.3 Creating the Honeywell (WIN-PAK CS) object tree	5
3.4 Synchronizing Honeywell (WIN-PAK CS) ACS/FSA devices	6
3.5 Configuring connected Honeywell (WIN-PAK CS) ACS/FSA devices	6
4. Operating the Honeywell (WIN-PAK CS) integration module	7
4.1 General aspects of use of the Honeywell (WIN-PAK CS) module	7
4.2 Managing a Honeywell access point	7

Key Terms used in Honeywell (WIN-PAK CS) Integration Module Setup and User Guide

Server: a computer that hosts the **Server** installation version of the Intellect software package.

Access Control System (ACS): a hardware and software suite for access control.

Fire and Security Alarm (FSA): a combination of hardware and software for fast detection of fires or unauthorized access to secure facilities.

Controller: an electronic device that monitors and manages access points.

Access point: a location where access control is performed.

Access card: a physical access identifier that is recorded by a reader.

Introduction into Honeywell (WIN-PAK CS) Integration Module Setup and User Guide

On the page:

- [Document purpose](#)
- [General aspects of the Honeywell \(WIN-PAK CS\) integration module](#)

Document purpose

The Setup and User Guide for the Honeywell (WIN-PAK CS) Integration Module is a reference guide for administrators and operators of the Honeywell (WIN-PAK CS) module. This module is part of access control systems as well as fire and security alarm systems that are based on the *ACFA Intellect* software package.

This Guide contains information about the following topics:

1. general aspects of the Honeywell (WIN-PAK CS) integration module
2. configuration of the Honeywell (WIN-PAK CS) integration module
3. operation of the Honeywell (WIN-PAK CS) integration module

General aspects of the Honeywell (WIN-PAK CS) integration module



Attention!

The *Honeywell (WIN-PAK CS)* integration is not supported starting from version of *Intellect 4.10.0* and *ACFA Intellect 6.0*.

The Honeywell (WIN-PAK CS) integration module functions as a part of ACS/FSA solutions based on *ACFA Intellect* software, and is designed to configure and manage Honeywell (WIN-PAK CS) devices.



Note.

For detailed information about *Honeywell (WIN-PAK CS)* systems, consult the manufacturer's documentation (from [Honeywell Security](#)).



Attention!

Software for the *Honeywell (WIN-PAK CS)* system is required for operation of the *Honeywell (WIN-PAK CS)* integration module.

To configure the Honeywell (WIN-PAK CS) integration module:

1. Install the required hardware at the secure facility.
2. Install the manufacturer's software for the Honeywell (WIN-PAK CS) system on a computer that has access to the Server over the network and is connected to the Honeywell (WIN-PAK CS) system hardware.



Note:

You are urged to not install the Honeywell (WIN-PAK CS) manufacturer's software and the Server on the same computer.

3. Configure the Honeywell (WIN-PAK CS) system by using the manufacturer's software.

Configuring the Honeywell (WIN-PAK CS) Integration Module

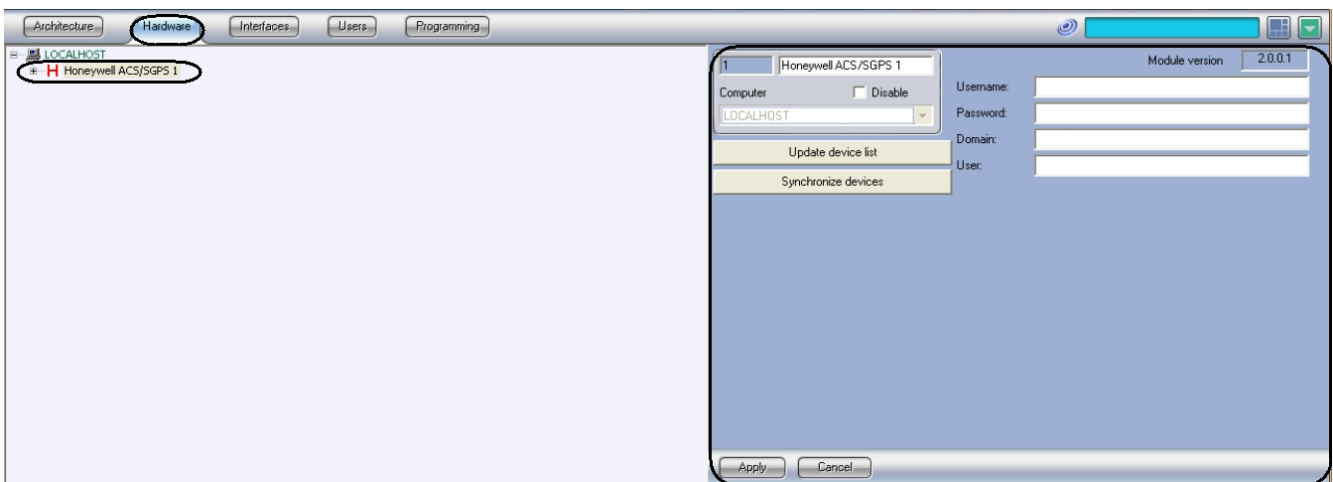
Procedure for configuring the Honeywell (WIN-PAK CS) integration module

To configure the Honeywell (WIN-PAK CS) integration module in *ACFA Intellect*, perform the steps below in the order in which they are given:

1. Configure a connection to the Honeywell (WIN-PAK CS) ACS/FSA.
2. Allow for the object tree to be created automatically.
3. Synchronize the Honeywell (WIN-PAK CS) ACS/FSA devices.
4. Configure the connected Honeywell (WIN-PAK CS) ACS/FSA devices.

Configuring a connection to a Honeywell (WIN-PAK CS) ACS/FSA

To connect a Honeywell (WIN-PAK CS) system to *ACFA Intellect*, go to the settings panel of a **Honeywell ACS/FSA** object . This object is created under a parent **Computer** object (go to the **Settings** dialog box and click the **Hardware** tab).

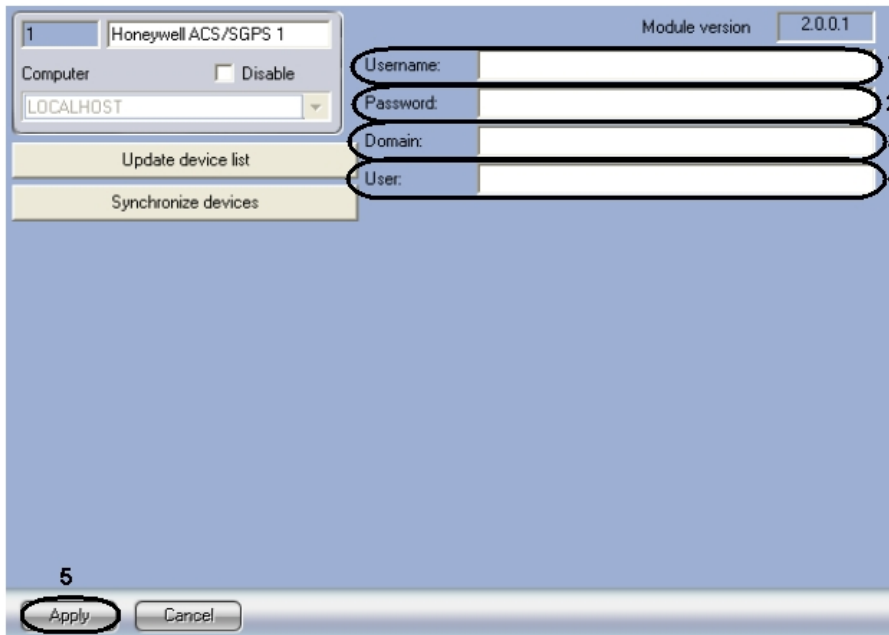


Note:

The **Module version** shows the version of the Honeywell (WIN-PAK CS) integration module.

To configure a connection to a Honeywell (WIN-PAK CS) ACS/FSAsystem:

1. Go to the **Honeywell ACS/FSA** object's settings panel.



2. In the **Username** field, type a username for accessing the computer that hosts the installation of the manufacturer's software for the Honeywell (WIN-PAK CS) ACS/FSA (1).
3. In the **Password** field, type the password for accessing the computer that hosts the installation of the manufacturer's software for the Honeywell (WIN-PAK CS) ACS/FSA (2).
4. In the **Domain** field, type the network address or network name of the computer that hosts the installation of the manufacturer's software for the Honeywell (WIN-PAK CS) ACS/FSA (3).
5. In the **User** field, type the name of a user who has an account in the manufacturer's software and rights to edit the object tree (4).

Note: When changing the user, be sure to synchronize devices (see the section [Synchronizing Honeywell \(WIN-PAK CS\) ACS/FSA devices](#)).

6. Click the **Apply** button (5).

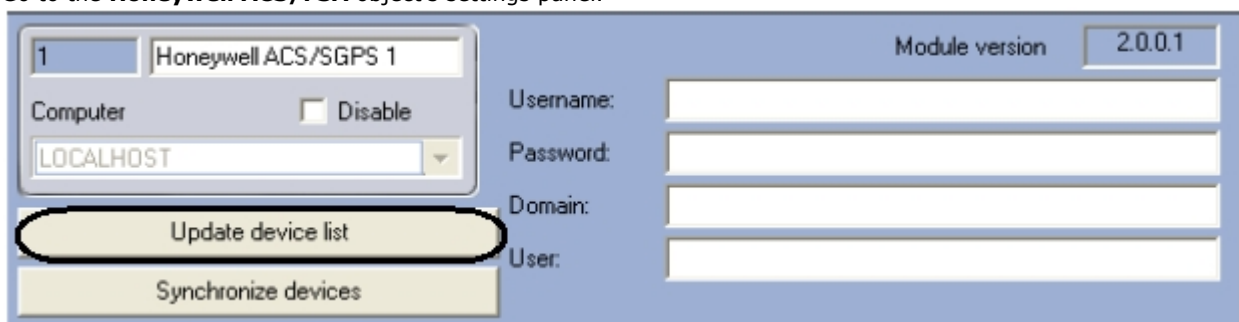
Configuration of a connection to the Honeywell (WIN-PAK CS) ACS/FSA is now complete.

Creating the Honeywell (WIN-PAK CS) object tree

When the tree of Honeywell (WIN-PAK CS) ACS/FSA objects is automatically built, the configuration created in the manufacturer's software is read and objects are added to the tree in *ACFA Intellect*.

To automatically create the object tree:

1. Go to the **Honeywell ACS/FSA** object's settings panel.



2. Click the **Update device list** button.

Honeywell (WIN-PAK CS) ACS/FSA objects will be created in the *ACFA Intellect* object tree, under the **Honeywell ACS/FSA** object.



Automatic creation of the Honeywell (WIN-PAK CS) object tree is now complete.

Synchronizing Honeywell (WIN-PAK CS) ACS/FSA devices

When Honeywell (WIN-PAK CS) ACS/FSA devices in *ACFA Intellect* are synchronized with the configuration created in the manufacturer's software, *ACFA Intellect* verifies the device addresses that are specified in *ACFA Intellect*. If any discrepancies are found, a message is displayed.

To synchronize the configuration:

1. Go to the **Honeywell ACS/FSA** object's settings panel.

2. Click the **Synchronize devices** button.

The configuration is now synchronized.

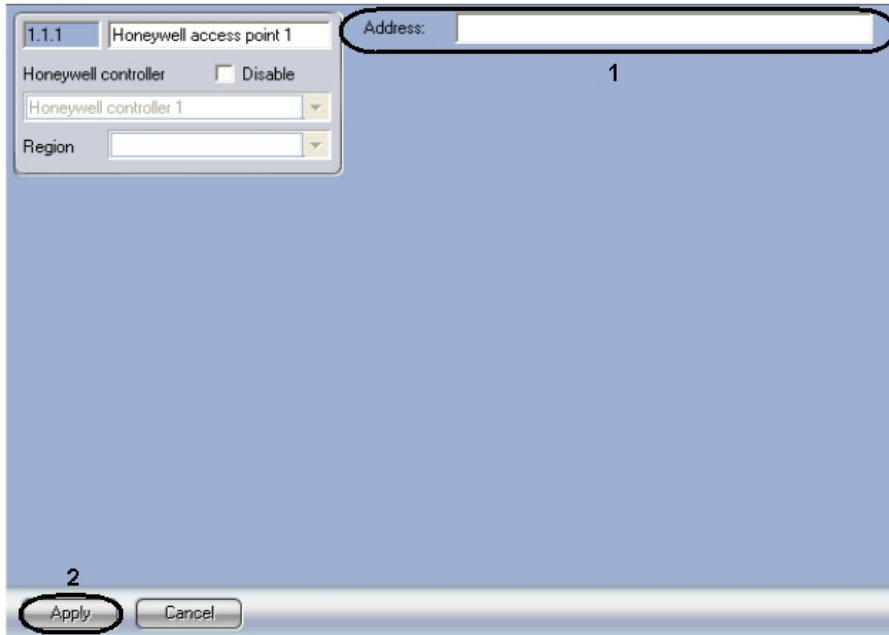
Configuring connected Honeywell (WIN-PAK CS) ACS/FSA devices

All devices (controllers, access points, and connection lines) of a Honeywell (WIN-PAK CS) system in *ACFA Intellect* have only one setting: their address. A device is assigned an address when the object tree is automatically built (see the section [Creating the Honeywell \(WIN-PAK CS\) object tree](#)). You are recommended to not change device addresses.

To change the address of a device, go to its settings panel.

To change a device address:

1. Go to the settings panel of the object whose address you want to change.



2. In the **Address** field, enter a new address for the device (1).
3. Click the **Apply** button (2).

The device address has now been changed.

Operating the Honeywell (WIN-PAK CS) integration module

General aspects of use of the Honeywell (WIN-PAK CS) module

You can use the following interface objects to operate the Honeywell (WIN-PAK CS) integration module:

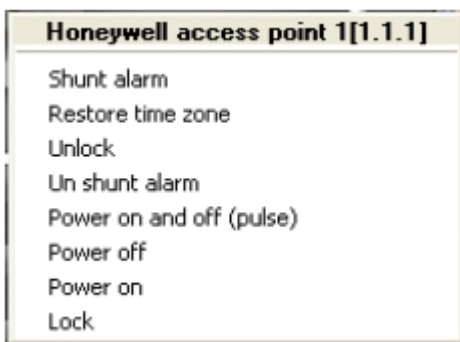
1. **Map**
2. **Event Log**

For information on how to configure these GUI objects, consult the [Intellect Software Package: Administrator's Guide](#).

For detailed information on how to work with GUI objects, refer to the [Intellect Software Package: Operator's Guide](#).

Managing a Honeywell access point

To manage a Honeywell access point, go to the **Map** window and open the menu of the relevant **Honeywell Access Point** object.



Description of the commands in the menu for a Honeywell Access Point object is given in the table.

Menu item	Function performed
Shunt alarm	Turn off logging of alarms in Event Viewer .
Restore time zone	Switches the access point to normal mode
Unblock	Unlock an access point

Unshunt alarm	Turn on logging of alarms in Event Viewer .
Power on and off (pulse)	Open the access point for the amount of time specified in the manufacturer's software
Power off	Close the access point
Power on	Open the access point
Lock	Lock the access point