



Intellect

Impro Integration Module Settings Guide

1. Introduction into Impro Integration Module Settings Guide	3
2. Supported hardware and licensing of the Impro integration module	3
3. Configuration of the Impro integration module	4
3.1 Procedure for configuring of Impro integration module	4
3.2 Configuration of Impro ACS connection to ACFA Intellect software package	4
3.3 Configure the Impro controller	5
3.4 Configure the Impro zone	6
3.5 Configure the Impro access point	7
3.6 Configure the Impro terminal	8
3.7 Configure the Impro input and output	9
4. Working with the Impro integration module	10

Introduction into Impro Integration Module Settings Guide

On the page:

- Purpose of the document
- General information about the Impro integration module

Purpose of the document

This *Impro Module Settings Guide* is a reference manual designed for *Impro* Module configuration technicians. This module is part of an access control system (ACS) built on the *ACFA Intellect* Software System.

This Guide presents the following materials:

1. general information about the *Impro* integration module;
2. configuration of the *Impro* integration module;
3. working with the *Impro* integration module.

General information about the Impro integration module

The *Impro* module is a component of an ACS built on the *ACFA Intellect* Software System. It was designed to perform the following functions:

1. Configuration of the *Impro* ACS (manufactured by Impro Technologies);
2. Interaction between the *Impro* ACS and the *ACFA Intellect* Software System (monitoring).



Note:

Detailed information about the *Impro* ACS is presented in the official documentation for that system.

Before configuring the *Impro* Module, the following actions must be performed:

1. Install the *Impro* ACS hardware on the protected territory (see the *Impro* reference documentation).
2. Configure the *Impro* ACS in vendor's software (see the official reference documentation).
3. Connect the *Impro* ACS to the Server.

Supported hardware and licensing of the Impro integration module

Manufacturer	Impro Technologies Suite N, Terrace Plaza 1810 S. Pinella Avenue Tarpon Springs Florida 34689 Tel.: +1 727 249 8006 Email: sales@impro.net
Integration type	Soft-Soft
Equipment connection	Ethernet, RS485

Supported equipment

Equipment	Function	Features
Impro (ECII) Ethernet Controller	Controller	Communication interface RS485 Protocol TCP/IP, UDP Baud rates 9600, 19200, 28800, 38400 и 57600

Impro (iTRT) Intelligent Twin Reader Terminal	Terminal	Communication interface Ethernet, RS485 Full Wiegand support Connection to up to two readers Relaxed or Full Anti-passback access 4 digital inputs including two DOS and two RTE inputs
Impro (iTT) Intelligent Twin Antenna Terminal	Terminal	Communication interface Ethernet, RS485 Storage up to 10000 transactions EOL and DOS inputs Connection to up to two antenna readers
Impro (MDTA) Multi-discipline Time Attendance Terminal	Terminal	Communication interface RS485 PIN-code entry using the 12-button keypad
Impro I16 16 Channel Input Terminal	Terminal	16 digital inputs Communication interface RS485 User interface consisting 20 LED status indicators
Impro O16 16 Channel Output Terminal	Terminal	16 relays Communication interface RS485 User interface consisting 20 LED status indicators

Protection

For 1 parent object and terminal.

Configuration of the Impro integration module

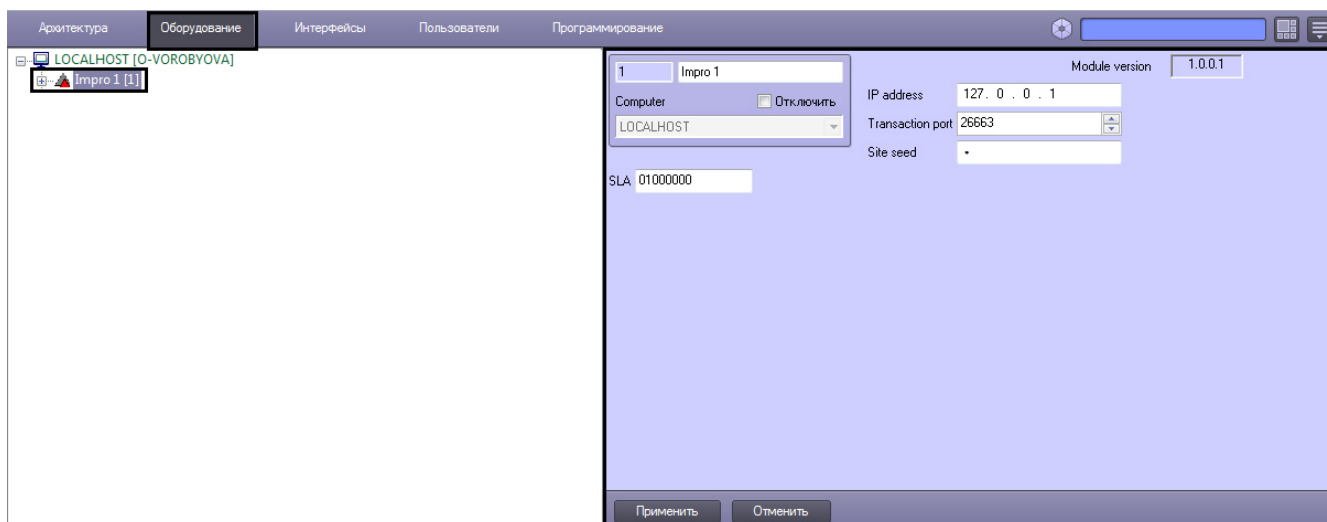
Procedure for configuring of Impro integration module

The *Impro* integration module is configured through the following steps:

1. Configuration of *Impro ACS* in vendor software.
2. Configuration of *Impro ACS* connection to *ACFA Intellect* software package.
3. Configure the *Impro* controller.
4. Configure the *Impro* security zone.
5. Configure the *Impro* access point.
6. Configure the *Impro* terminal.
7. Configure the *Impro* input and output.

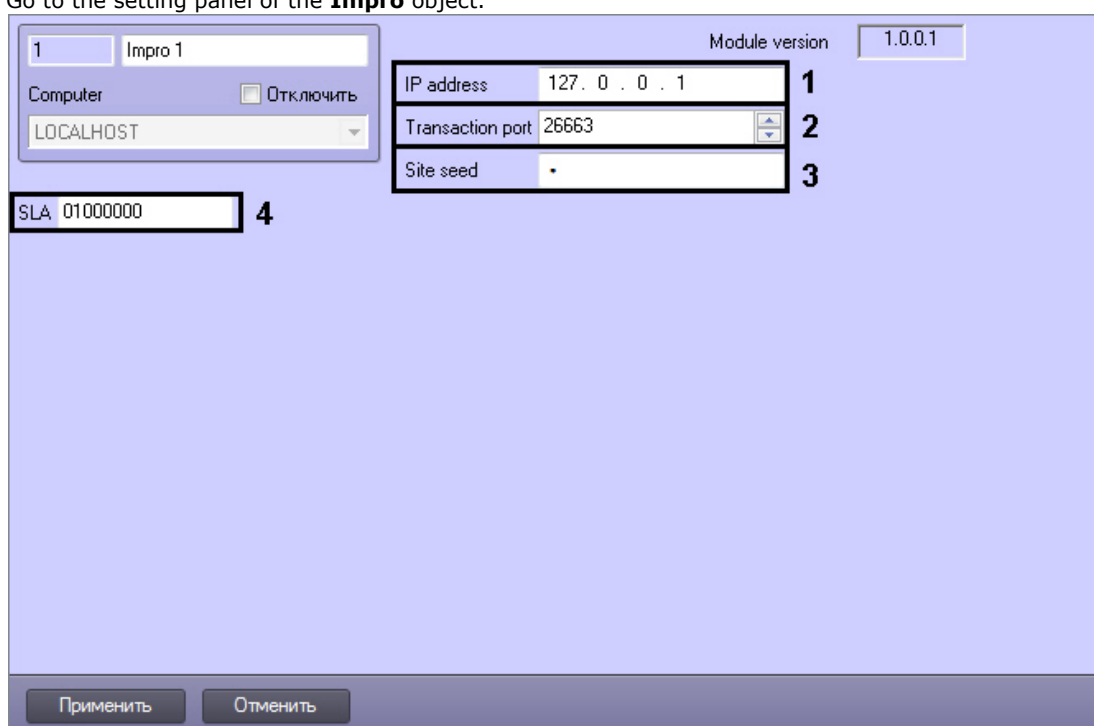
Configuration of Impro ACS connection to ACFA Intellect software package

Configuration of the *Impro ACS* connection to *ACFA Intellect* software package is performed on the setting panel of the **Impro** object. This object is created on the basis of the **Computer** object on the **Hardware** tab of the **System settings** dialog box.



To configure the connection of *Impro ACS* to *ACFA Intellect* software package do the following:

1. Go to the setting panel of the **Impro** object.



2. In the **IP address** field set the IP address of computer on which *Impro ACS* software is installed (**1**).
3. In the **Transaction port** field set the port of *Impro* integration module connection to *Impro ACS* software (**2**).
4. In the **Site seed** field set the password of *Impro* integration module connection to *Impro ACS* software (**3**).
5. In the **SLA** field enter the logical address of the secured site (**4**).



Note.

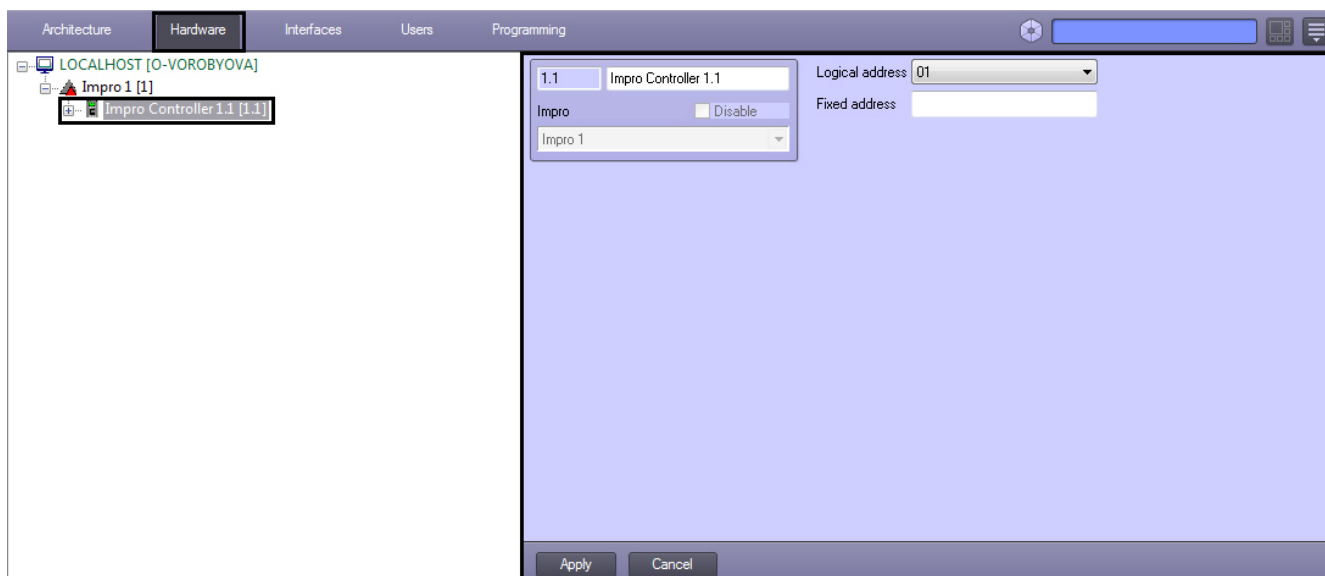
Site logical address and siteseed are specified in the *Impro ACS* software.

6. To save changes click **Apply**.

Configuration of *Impro ACS* connection to *ACFA Intellect* software package is completed.

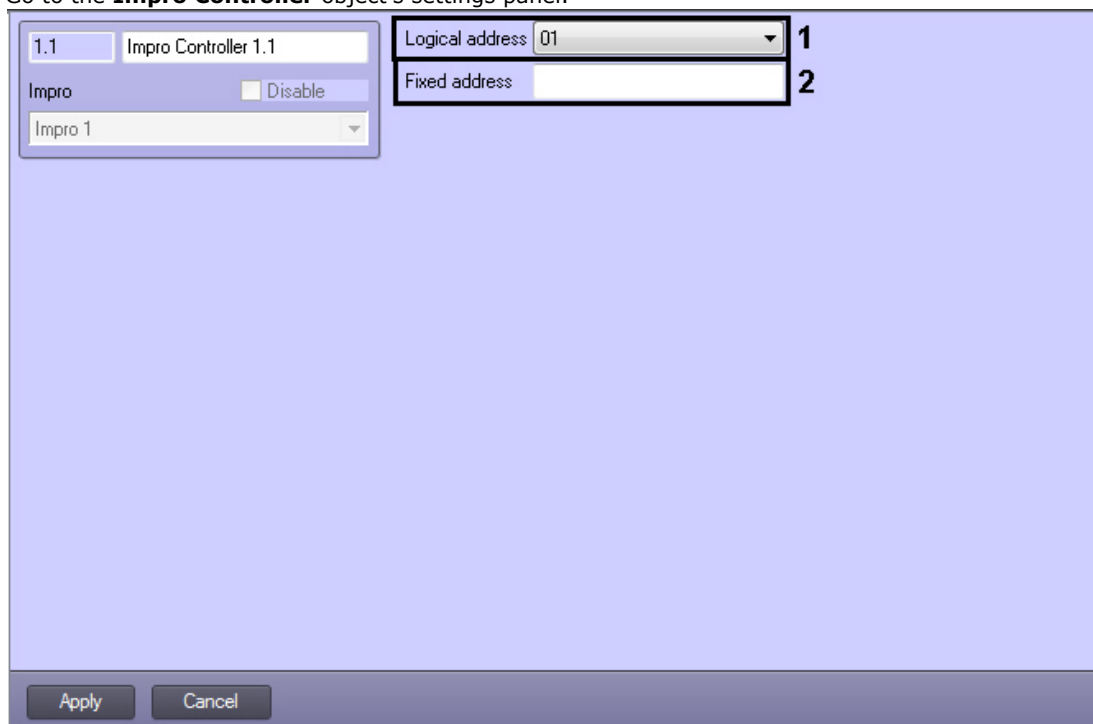
Configure the Impro controller

The controller is configured on the **Impro Controller** object's settings panel. This object is created based on a **Impro** object on the **Hardware** tab of the **System Settings** dialog window.



To configure the controller do the following:

1. Go to the **Impro Controller** object's settings panel.

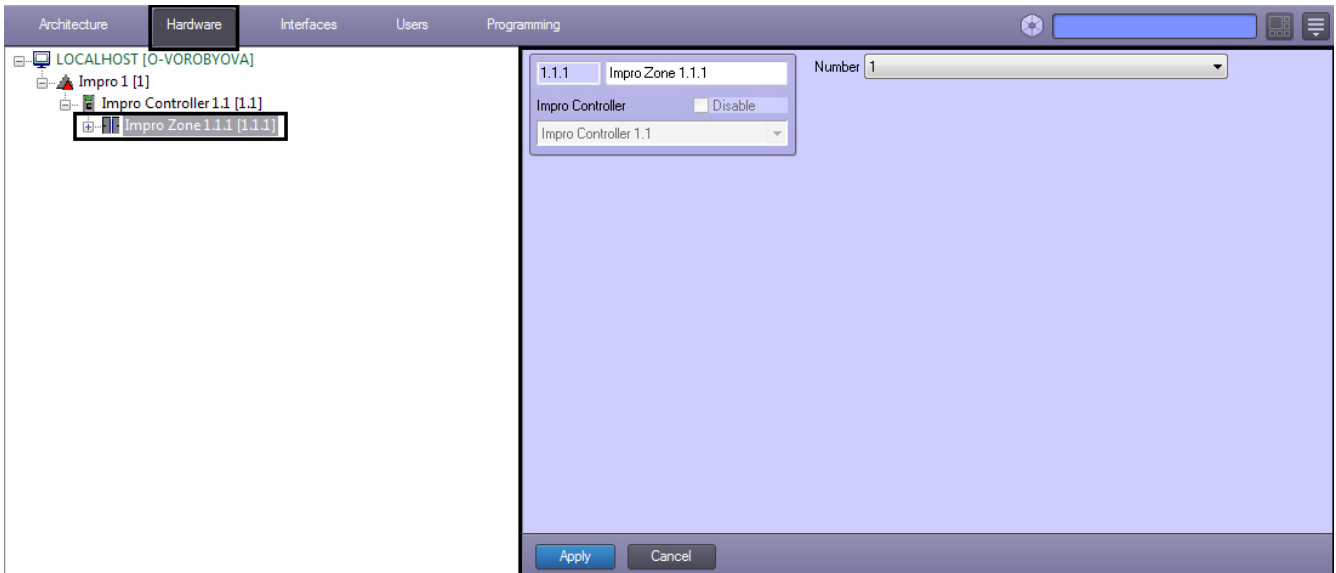


2. From the **Logical address** drop-down list select the controller logical address specified while hardware configuring in the vendor's software (**1**).
3. In the **Fixed address** enter the controller address for its identification (**2**).
4. To save changes click **Apply** (**3**).

Configuring of the *Impro* controller is completed.

Configure the Impro zone

The security zone is configured on the **Impro Zone** object's settings panel. This object is created based on a **Impro Controller** object on the **Hardware** tab of the **System Settings** dialog window.



To configure the security zone do the following:

1. Go to the **Impro Zone** object's settings panel.

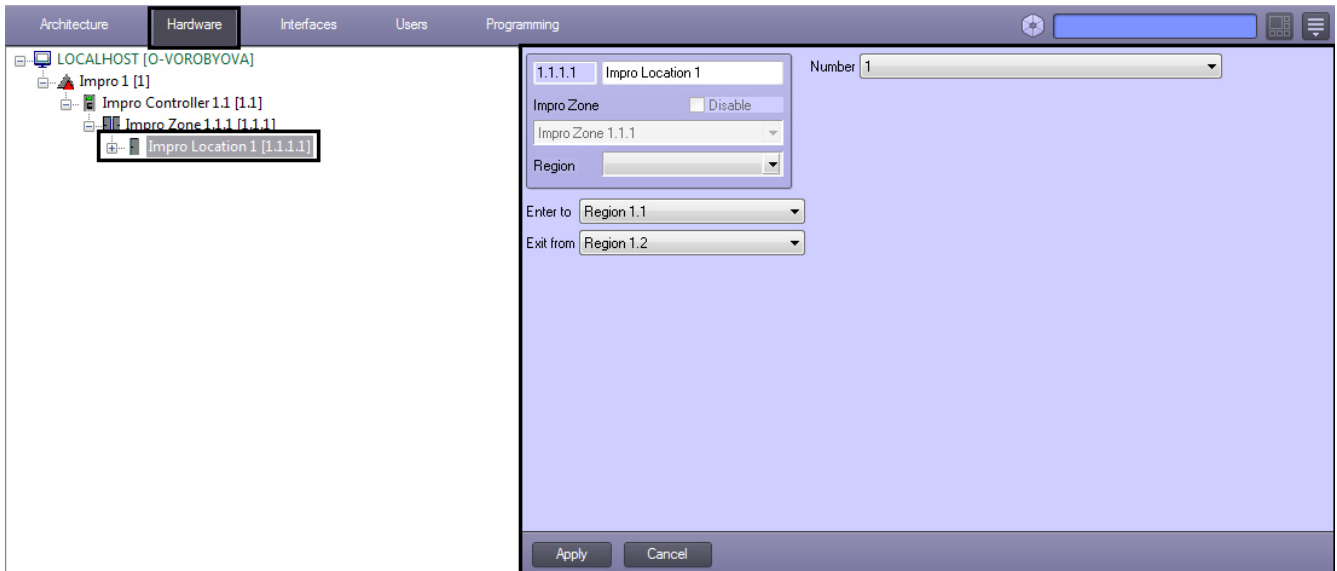


2. From the **Number** drop-down list select the identification number of the zone.
3. To save changes click **Apply**.

Configuring of the *Impro* zone is completed.

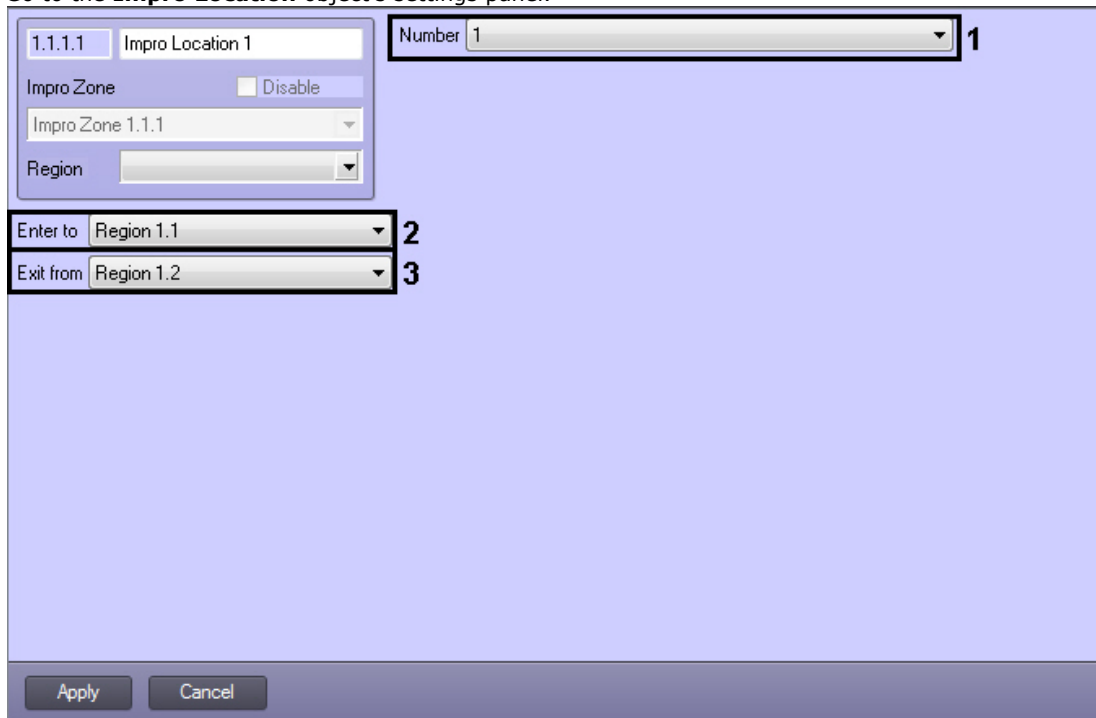
Configure the Impro access point

The access point is configured on the **Impro Location** object's settings panel. This object is created based on a **Impro Zone** object on the **Hardware** tab of the **System Settings** dialog window.



To configure the access point do the following:

1. Go to the **Impro Location** object's settings panel.



2. From the **Number** drop-down list select the identification number of the access point (**1**).
3. From the **Enter to** drop-down list select the **Region** object corresponding to the area to which entry is performed (**2**).
4. From the **Exit from:** drop-down list select the **Region** object corresponding to the area from which exit is performed (**3**).
5. To save changes click the **Apply** button.

Configuring the *Impro* access points is completed.

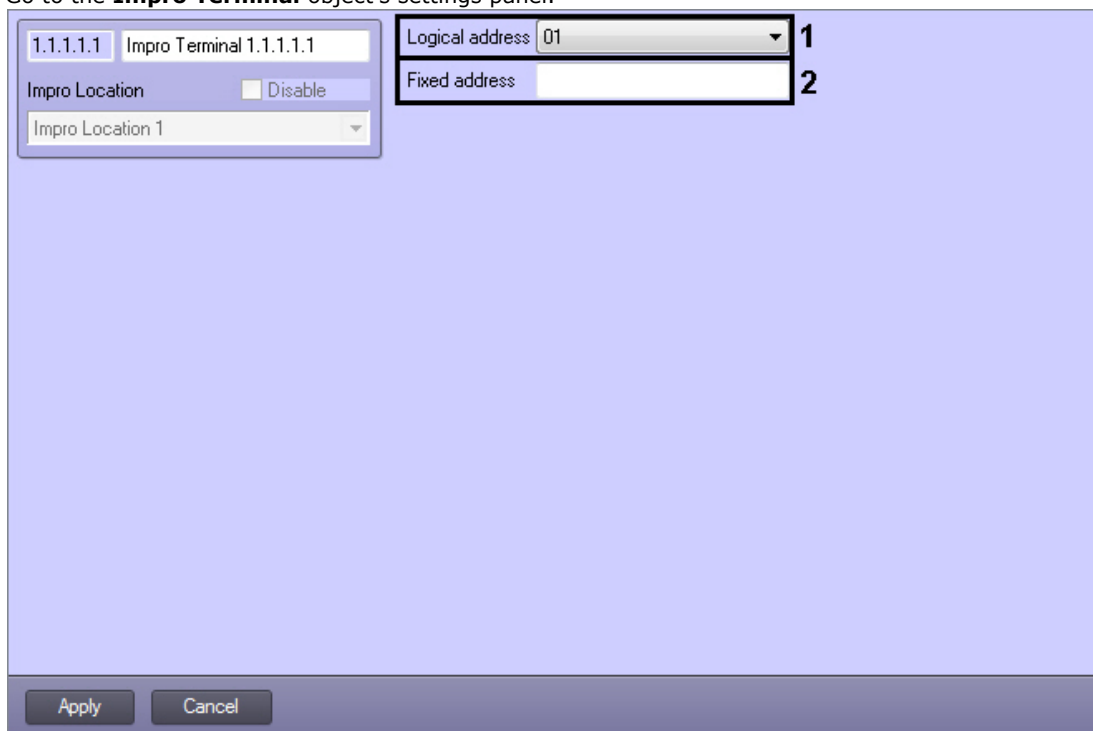
Configure the Impro terminal

The terminal is configured on the **Impro Terminal** object's settings panel. This object is created based on a **Impro Location** object on the **Hardware** tab of the **System Settings** dialog window.



To configure the terminal do the following:

1. Go to the **Impro Terminal** object's settings panel.

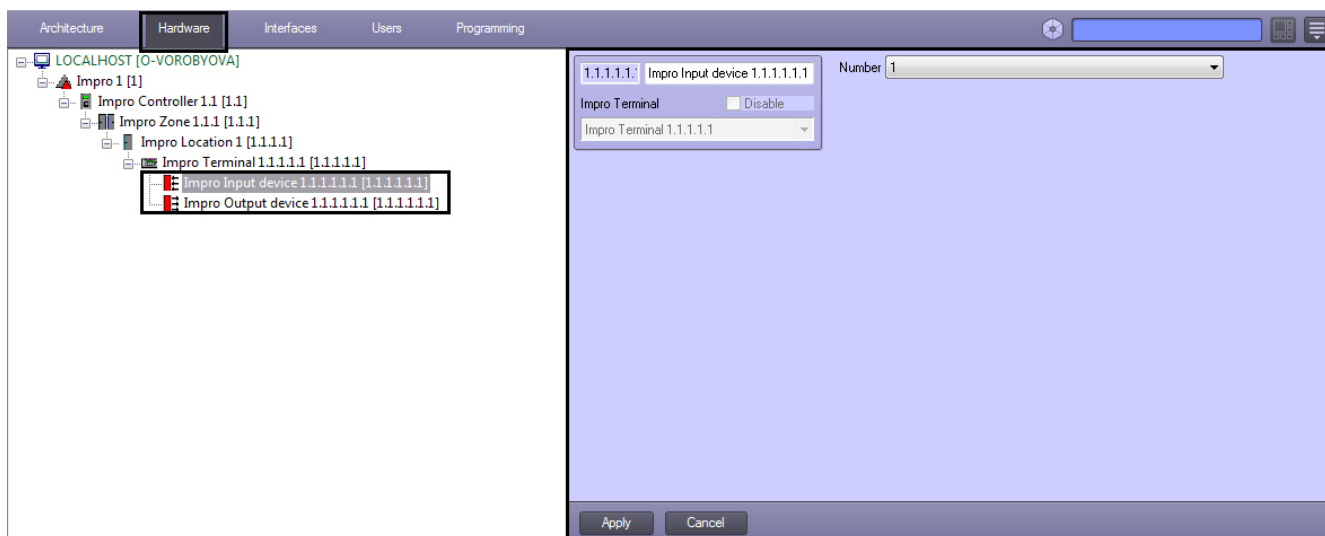


2. From the **Logical address** drop-down list select the terminal logical address specified while hardware configuring in the vendor's software (**1**).
3. In the **Fixed address** enter the terminal address for its identification (**2**).
4. To save changes click **Apply**.

Configuring of the *Impro* terminal is completed.

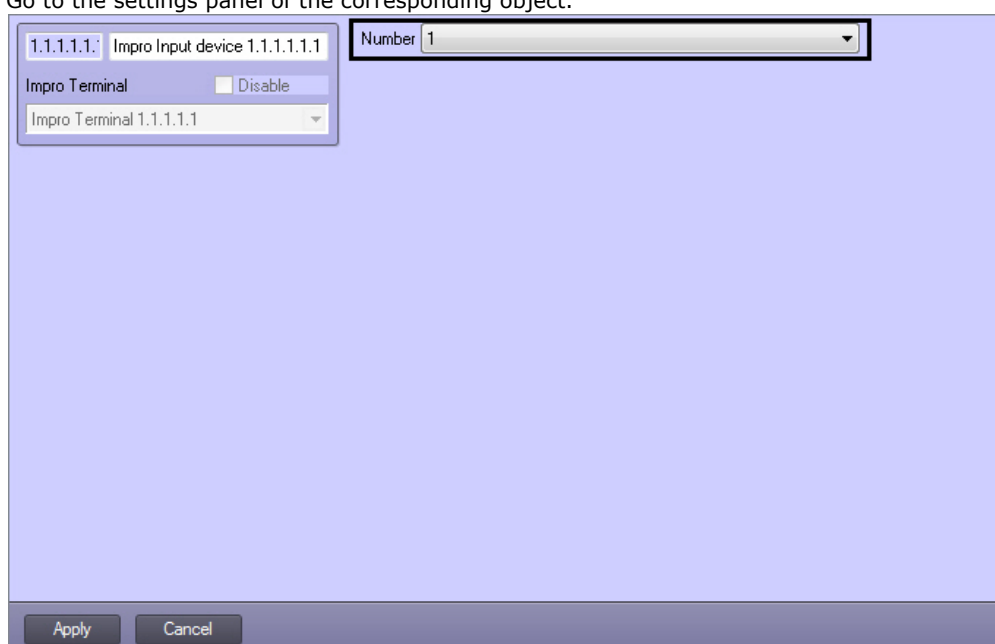
Configure the Impro input and output

The *Impro* input and output are configured on the **Impro Input device** and **Impro Output device** object's settings panel correspondingly. These objects are created based on a **Impro Terminal** object on the **Hardware** tab of the **System Settings** dialog window.



To configure the input or output do the following:

1. Go to the settings panel of the corresponding object.



2. From the **Number** drop-down list select the identification number of the zone.
3. To save changes click **Apply**.

Configuring of the *Impro* input and output is completed.

Working with the Impro integration module

The following interface objects are used for working with *Impro* integration module:

1. **Map**;
2. **Events protocol**.

Information about **Map** and **Events protocol** interface objects' configuration is given in the [Intellect Software Package: Administrator's Guide](#).

Working with these interface objects is given in details in [Intellect Software Package: Operator's Guide](#).



Note.

Interactive map allows to monitor states of the *Impro* objects. Control of the *Impro* objects is not performed.