



Teltonika Integration Module Settings Guide

Last update 07/04/2021

Table of contents

1	Introduction into Teltonika Module Settings Guide.....	3
1.1	Purpose of the document.....	3
1.2	General information about the Teltonika integration module	3
2	Supported hardware and licensing of the Teltonika integration module	4
3	Configuring Teltonika integration module	5
3.1	Pre-configuring the Teltonika tracking system.....	5
3.2	Configuring the Teltonika tracking system connection to ACFA Intellect	5
3.3	Configuring the rule for displaying Teltonika parameters and events	6
3.4	Configuring the Teltonika tracker	8
4	Working with Teltonika integration module	10
4.1	General information about working with Teltonika module.....	10
4.2	Managing the Teltonika tracker	10

1 Introduction into Teltonika Module Settings Guide

On this page:

- [Purpose of the document](#)
- [General information about the Teltonika integration module](#)

1.1 Purpose of the document

This *Teltonika Module Settings Guide* is a reference manual designed for *Teltonika* Module configuration technicians.

This Guide presents the following materials:

1. general information about the *Teltonika* integration module;
2. configuration of the *Teltonika* integration module;
3. working with the *Teltonika* integration module.

1.2 General information about the *Teltonika* integration module

The *Teltonika* module is a component of *ACFA Intellect* Software System. It is designed to track the location of vehicles on the map, determine the vehicle speed, fuel consumption, and to monitor the status of various vehicle sensors using the *Teltonika* tracker. Configuring the *Teltonika* trackers in *ACFA Intellect* is impossible.

Note

Detailed information about the *Teltonika* geotracking system is given in the official reference documentation (manufactured by Teltonika Telematics).

2 Supported hardware and licensing of the Teltonika integration module

Manufacturer	Teltonika Telematics Saltoniskiu st. 9B-1, LT-08105, Vilnius, Lithuania Phone: +370 5 212 7472 https://teltonika-gps.com/
Integration type	Low-level protocol
Equipment connection	GSM

Supported equipment

Equipment	Function	Features
All Teltonika trackers	Tracker	See the manufacturer's website

Licensing

Per 1 tracker.

3 Configuring Teltonika integration module

3.1 Pre-configuring the Teltonika tracking system

Before you configure the *Teltonika* module in *ACFA Intellect*, do the following:

1. Install a compatible [Teltonika Configurator](#) depending on the trackers used.
2. Connect to the tracker and check its status. The tracker will start transmitting data only after establishing its position using GPS/GLONASS satellites.
3. On the **GPRS** tab, explicitly specify the server IP address and the server port for receiving data. This IP address should be static (public). It is also necessary to indicate the type of protocol used.

The screenshot shows the Teltonika Configurator v1.4.14.23292 interface. The top navigation bar includes buttons for 'Load from device', 'Save to device', 'Update firmware', 'Reset configuration', 'Load from file', 'Save to file', 'Read records', and 'Reboot device'. The right side of the top bar displays the device information: 'IMEI 352093088081509', 'FW 03.25.15 Rev01', and 'Configuration 6.1.14.0'. The left sidebar contains a menu with categories like Status, Security, System, GPRS, Data Acquisition, SMS \ Call Settings, GSM Operators, Features, Accelerometer Features, Auto Geofence, Manual Geofence, Trip \ Odometer, Bluetooth, Bluetooth 4.0, Beacon List, 1-Wire, I/O, OBD II, CAN Adapter, and RS232 \ RS485. The main content area is divided into several settings panels:

- SIM1 GPRS Settings:** GPRS Context (Disable/Enable), APN (internet), APN Username (gdata), APN Password (gdata), Normal(PAP) / Secured(CHAP).
- Backup Server Settings:** Backup Server Mode (Disable/Backup), Duplicate, Backup Server Domain (88.200.175.195), Backup Server Port (21328), Backup Server Protocol (TCP/UDP).
- SIM2 GPRS Settings:** GPRS Context (Disable/Enable), APN (internet), APN Username, APN Password, Normal(PAP) / Secured(CHAP).
- Records Settings:** Open Link Timeout (s) (50), Response Timeout (s) (10), Network Ping Timeout(s) (0), Sort By (Newest/Oldest).
- Server Settings:** Domain (178.18.6.3), Port (6885), Protocol (TCP/UDP). The domain field is marked with a '1', the port with a '2', and the protocol with a '3'.
- FOTA WEB Settings:** Status (Disable/Enable), Domain (fm.teltonika.lt), Port (5000), Period (min) (360).

The bottom of the interface features social media icons and a gear icon for settings.

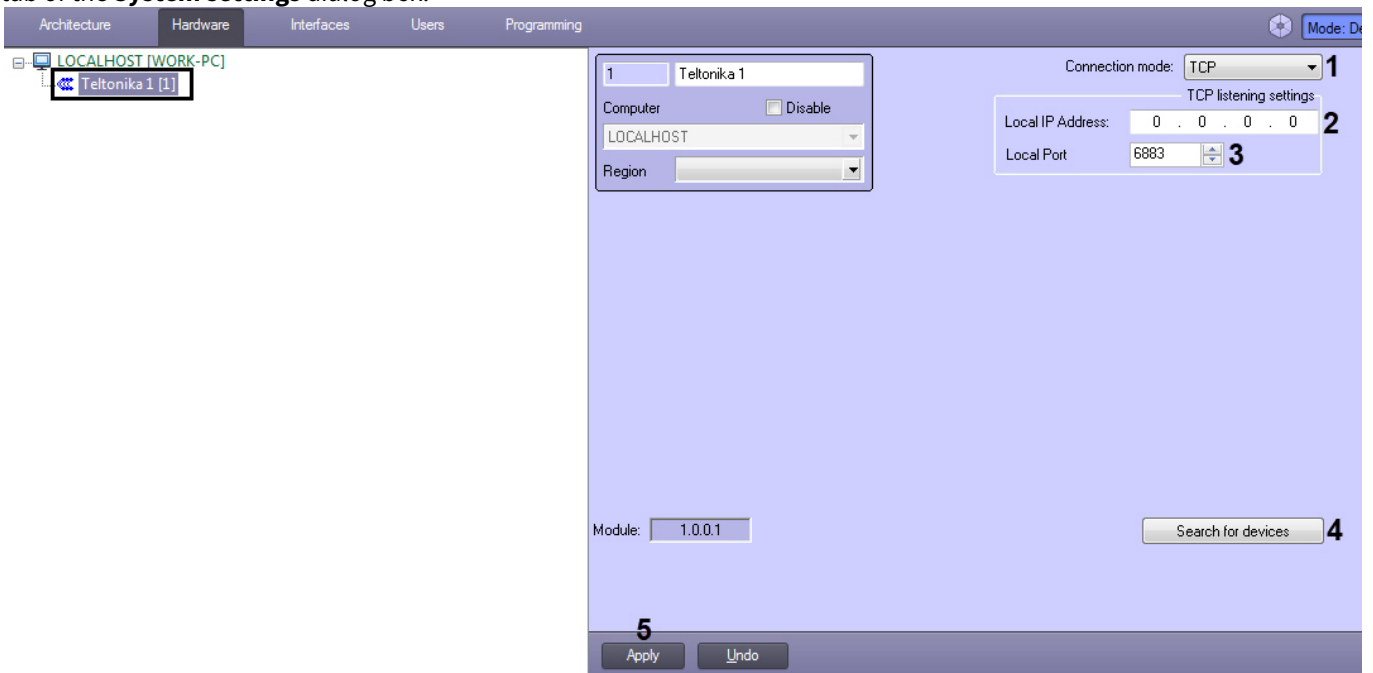
4. Configure other settings according to the official documentation for the tracker.

The preliminary configuration of the *Teltonika* geotracking system is complete.

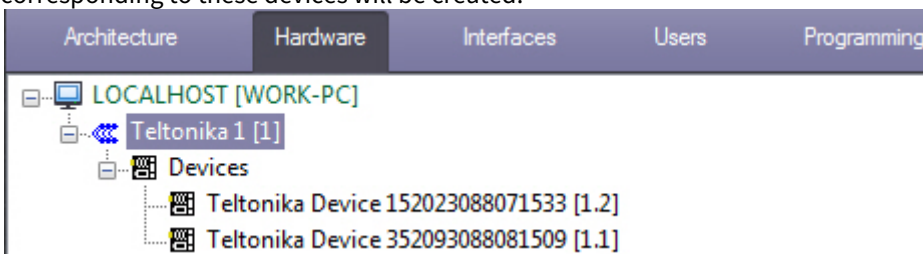
3.2 Configuring the Teltonika tracking system connection to ACFA Intellect

The *Teltonika* tracking system connection to *ACFA Intellect* is configured as follows:

1. Go to the settings panel of the **Teltonika** object, which is created on the basis of the **Computer** object on the **Hardware** tab of the **System settings** dialog box.



2. From the **Connection mode** drop-down list (1) select the protocol type: **TCP** or **UDP**.
3. In the **Local IP Address** field (2), explicitly specify the local or static (public) IP address of the server, which is specified in the *Teltonika* configurator (see [Pre-configuring the Teltonika tracking system](#)). If a local IP address is used, the traffic from the static (public) server address should be redirected to it.
4. In the **Local Port** field (3), specify the port for receiving the events from the trackers.
5. Click the **Search for devices** button (4) to search for the trackers. For the trackers found in the network, the child objects corresponding to these devices will be created.



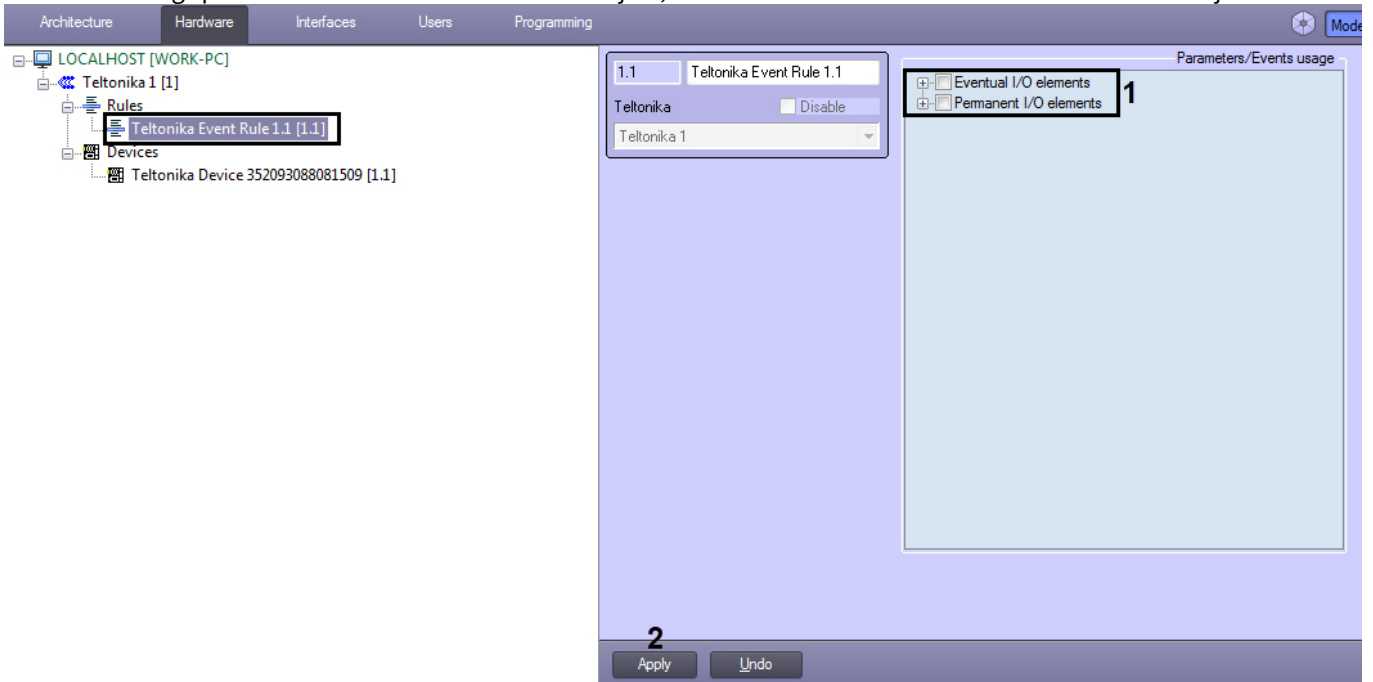
6. Click **Apply** (5) to save the changes.

The *Teltonika* tracking system connection to *ACFA Intellect* is now configured.

3.3 Configuring the rule for displaying Teltonika parameters and events

The *Teltonika* trackers can transmit not only the location information, but also many parameters and events with information about the state of various vehicle sensors. To display certain parameters and events on the *Intellect* map, configure it as follows:

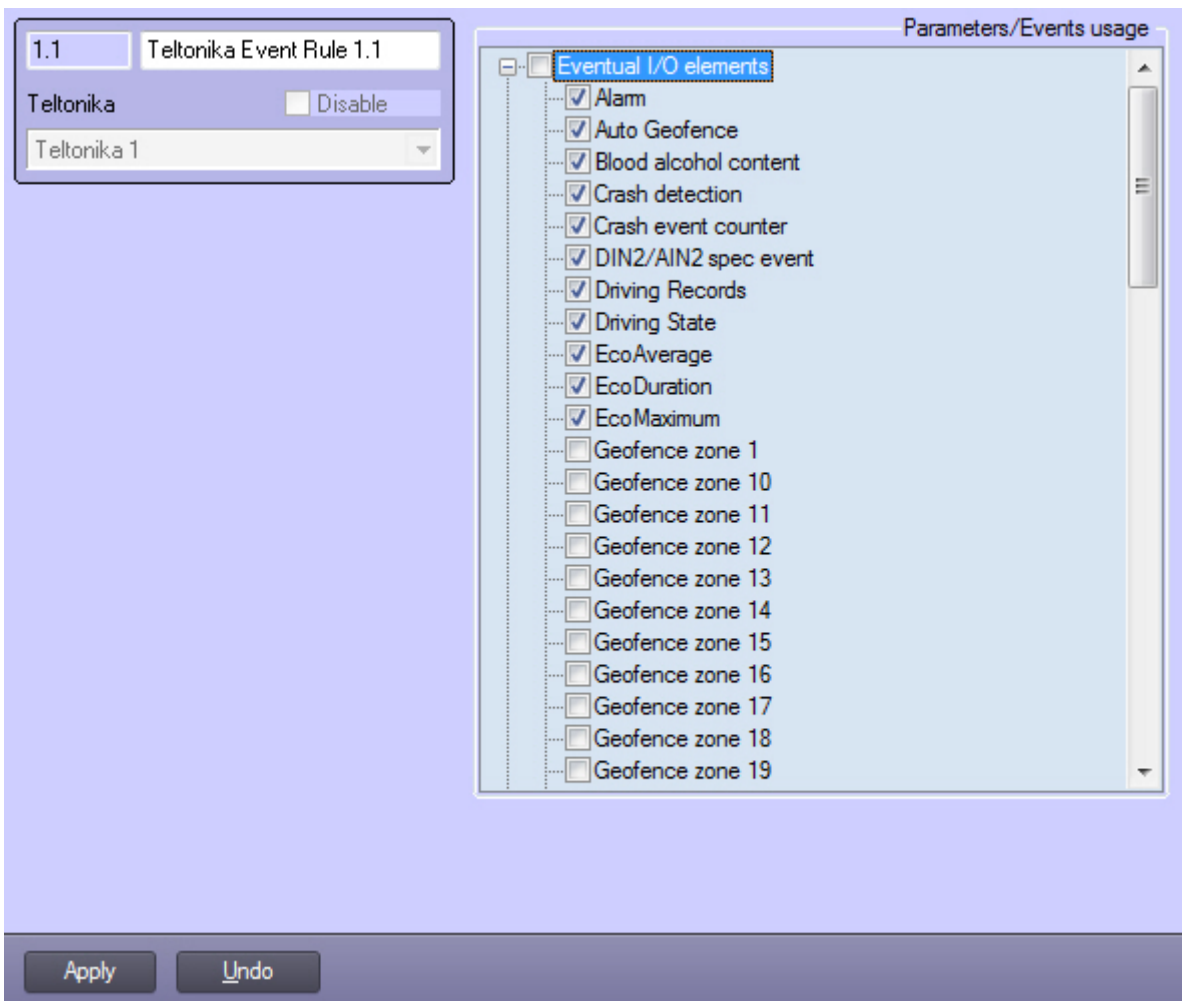
1. Go to the settings panel of the **Teltonika Event Rule** object, which is created on the basis of the **Teltonika** object.



2. In the **Parameters/Events usage** area, set the checkboxes for those parameters and events that should be displayed on the *ACFA Intellect* map.

Note

For the detailed information on parameters and events, see the official manual of the particular *Teltonika* tracker for which this rule is created.



3. Click **Apply (2)** to save the changes.

Configuring the rule for displaying the *Teltonika* parameters and events is now complete.

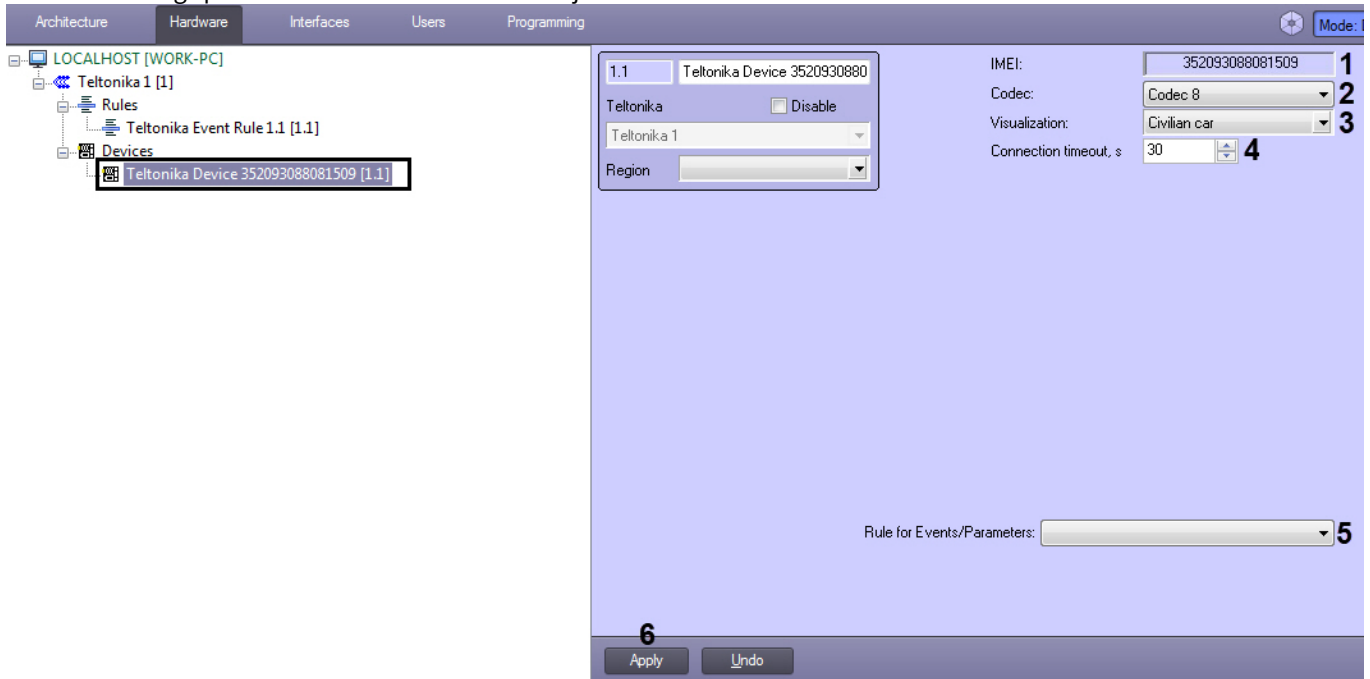
3.4 Configuring the Teltonika tracker

Note

The *Teltonika* tracker objects are created automatically after the *Teltonika* geotracking system is connected. You cannot create these objects manually.

The *Teltonika* tracker is configured as follows:

1. Go to the settings panel of the **Teltonika Device** object.



2. The **IMEI** field (1) displays the tracker identifier in the GSM network.
3. In the **Codec** drop-down list (2), the tracker data encoding is displayed. This encoding should match the encoding specified in the Teltonika Configurator (see [Pre-configuring the Teltonika tracking system](#)).
4. From the **Visualization** drop-down list (3) select the icon type that will be used to display the tracker on the *Intellect* map.
5. In the **Connection timeout** field (4), specify the tracker connection timeout in seconds.
6. From the **Rule for Events/Parameters** drop-down list (5) select the rule that will be used to display the parameters and events of this tracker on the *Intellect* map (see [Configuring the rule for displaying Teltonika parameters and events](#)).
7. Click **Apply** (6) to save the changes.

The *Teltonika* tracker is now configured.

4 Working with Teltonika integration module

4.1 General information about working with Teltonika module

The following interface objects are used for *Teltonika* integration module operation:

1. **Map;**
2. **Event viewer.**





For detailed description of configuring these interface objects, please refer to the [Intellect PSIM Administrator's Guide](#).

For detailed description of using these interface objects, please refer to the [Intellect PSIM Operator's Guide](#).

4.2 Managing the Teltonika tracker

The *Teltonika* tracker is not controlled in the **Map** interactive window.

The *Teltonika* tracker can have the following states:

	Communication lost
	Online
	Alarm
	Warning