



AnsonDB Integration Module Settings Guide

ACFA PSIM 1.1

Last update 05/06/2024

Table of Contents

1	Introduction into AnsonDB Integration Module Settings Guide.....	3
1.1	Purpose of the document	3
1.2	General information about the AnsonDB integration module	3
2	Configuration of the AnsonDB integration module.....	4
2.1	Configuration procedure for the AnsonDB integration module	4
2.2	Configure the connection of the AnsonDB ACS to the Oracle DB Server	4
2.3	Create objects of the AnsonDB devices	5

1 Introduction into AnsonDB Integration Module Settings Guide

On the page:

- [Purpose of the document](#)
- [General information about the AnsonDB integration module](#)

1.1 Purpose of the document

The *AnsonDB integration module settings guide* is a reference manual designed for *AnsonDB* Module configuration technicians and operators. This module functions as part of access control system which has been built on the *ACFA PSIM* Software System.

This Guide presents the following materials:

1. general information about the *AnsonDB* module;
2. *AnsonDB* module settings;

1.2 General information about the AnsonDB integration module

The *AnsonDB* integration module is part of the *ACS* system built on the basis of the *ACFA PSIM* Software System. It is designed to monitor devices of the *AnsonDB ACS*. Configuring devices of the *AnsonDB ACS* in the *ACFA PSIM* software package is impossible.

Before start the working of the *AnsonDB* integration module install hardware on the secured object and configure the system in the Oracle DB Server.

2 Configuration of the AnsonDB integration module

2.1 Configuration procedure for the AnsonDB integration module

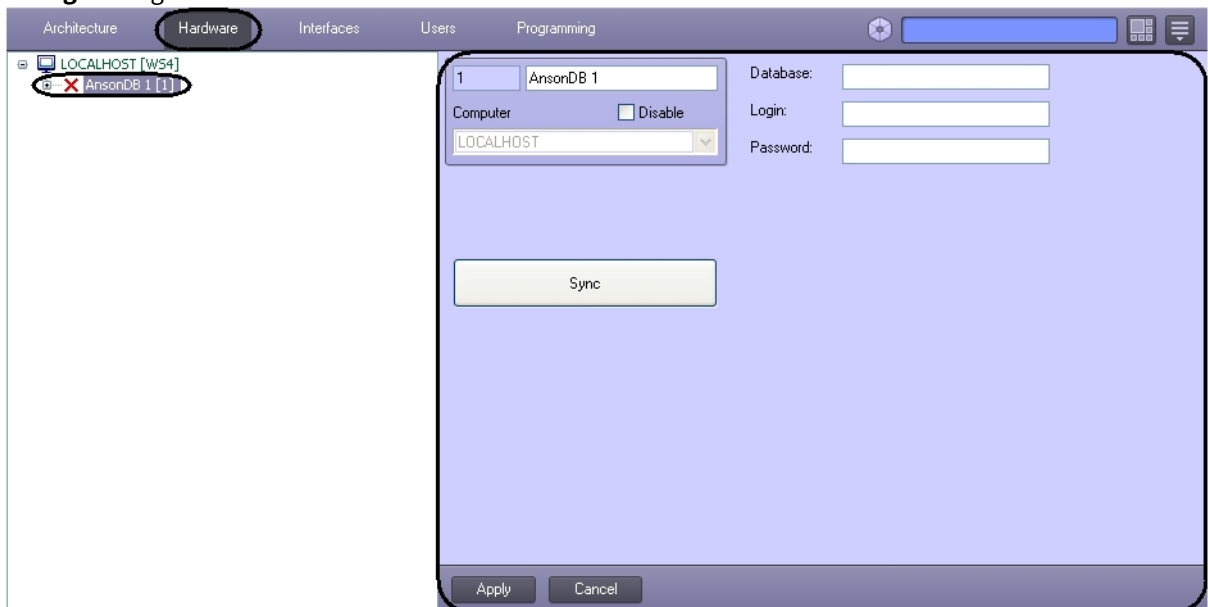
The *AnsonDB* integration module is configured as follows:

1. Configure the connection of the *AnsonDB* ACS to the *Oracle DB Server*.
2. Create objects of *AnsonDB* devices.

2.2 Configure the connection of the AnsonDB ACS to the Oracle DB Server

To configure the connection of the *AnsonDB* ACS to the *Oracle DB Server*, do the following:

1. Create the **AnsonDB** object on the basis of the **Computer** object on the **Hardware** tap of the **System settings** dialog window.



2. Set the connection parameters on settings panel of the **AnsonDB** object:

The screenshot shows a settings window for 'AnsonDB 1'. The 'Computer' dropdown is set to 'LOCALHOST'. On the right side, there are three input fields labeled 'Database:', 'Login:', and 'Password:', each with a circled number 1, 2, and 3 respectively. Below these fields is a 'Sync' button with a circled number 4. At the bottom of the window, there are 'Apply' and 'Cancel' buttons, with the 'Apply' button circled and labeled with a number 5.

- a. In the **Database:** field enter the connection string to the *Oracle DB Server* (1).
- b. In the **Login:** field enter the login of connection to the *Oracle DB Server* (2).
- c. In the **Password:** field enter the password of connection to the *Oracle DB Server* (3).
3. Click the **Sync** button to synchronize the *Axxon PSIM* software with the *Oracle DB Server* (4).
4. Click the **Apply** button (5).

Configuring the connection of the *Aritech FSA* to the *Oracle DB Server* is completed.

2.3 Create objects of the AnsonDB devices

The following elements of the *AnsonDB ACS* system are available in the *ACFA PSIM* software package: controllers (**AnsonDB controller** object), doors (**AnsonDB Door** object).

AnsonDB controller object is created on the basis of the **AnsonDB** object.

AnsonDB Door object is created on the basis of the **AnsonDB controller** object.

