



Aritech Integration Module Settings Guide

ACFA PSIM 1.1

Last update 05/03/2024

Table of Contents

1	Introduction into Aritech Integration Module Settings Guide	3
1.1	Purpose of the document	3
1.2	General information about the Aritech integration module	3
2	Supported hardware and licensing of the Aritech integration module	4
3	Configuration of the Aritech integration module	5
3.1	Configuration procedure for the Aritech integration module	5
3.2	Configure the connection of the Aritech FSA to the ACFA PSIM software package	5
3.3	Create objects of the Aritech devices	6
4	Working with the Aritech integration module	7
4.1	General information about working with the Aritech integration module	7
4.2	Controlling the Aritech controller	7

1 Introduction into Aritech Integration Module Settings Guide

On the page:

- [Purpose of the document](#)
- [General information about the Aritech integration module](#)

1.1 Purpose of the document

The *Aritech integration module settings guide* is a reference manual designed for *Aritech* Module configuration technicians and operators. This module functions as part of fire and security alarm system which has been built on the *ACFA PSIM* Software System.

This Guide presents the following materials:

1. general information about the *Aritech* module;
2. *Aritech* module settings;
3. working with the *Aritech* module.

1.2 General information about the Aritech integration module

The *Aritech* integration module is part of the *FSA* system built on the basis of the *ACFA PSIM* Software System. It is designed to control and manage devices of the *Aritech FSA*. Configuring devices of the *Aritech FSA* in the *ACFA PSIM* software package is impossible.

Before start the working of the *Aritech* integration module install hardware on the secured object and configure the system in the vendor software.

Note.

Detailed information about the Aritech can be found in the official documentation (manufacturer “UTC Fire & Security”).

2 Supported hardware and licensing of the Aritech integration module

Manufacturer	Aritech www.aritech.pro
Integration type	Protocol
Equipment connection	RS-232

Supported equipment

Equipment	Function	Features
FP2000	Address and analog control and indicating equipment	Number of alarm loops 8 Possibility to connect no-address devices Number of devices in loop 128 Number of devices in equipment 512 Standard outputs OUT1 - OUT4 Programmed outputs OUT5 - OUT8

Protection

Parent object.

3 Configuration of the Aritech integration module

3.1 Configuration procedure for the Aritech integration module

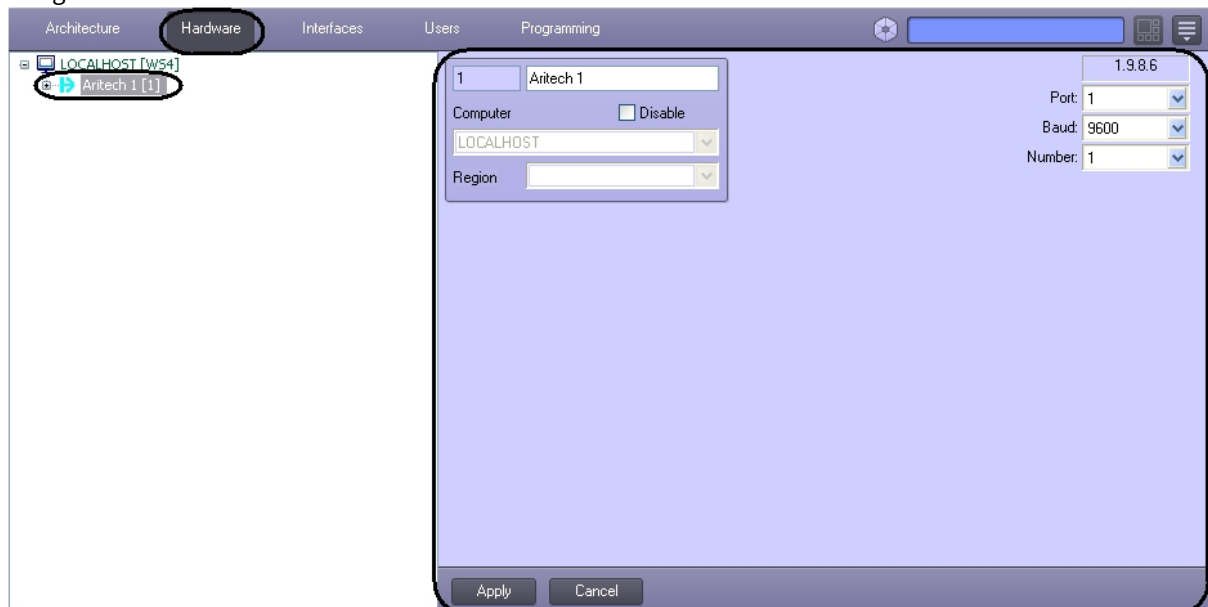
The *Aritech* integration module is configured as follows:

1. Configure the connection of the *Aritech FSA* to the *ACFA PSIM* software package.
2. Create objects of *Aritech* devices.

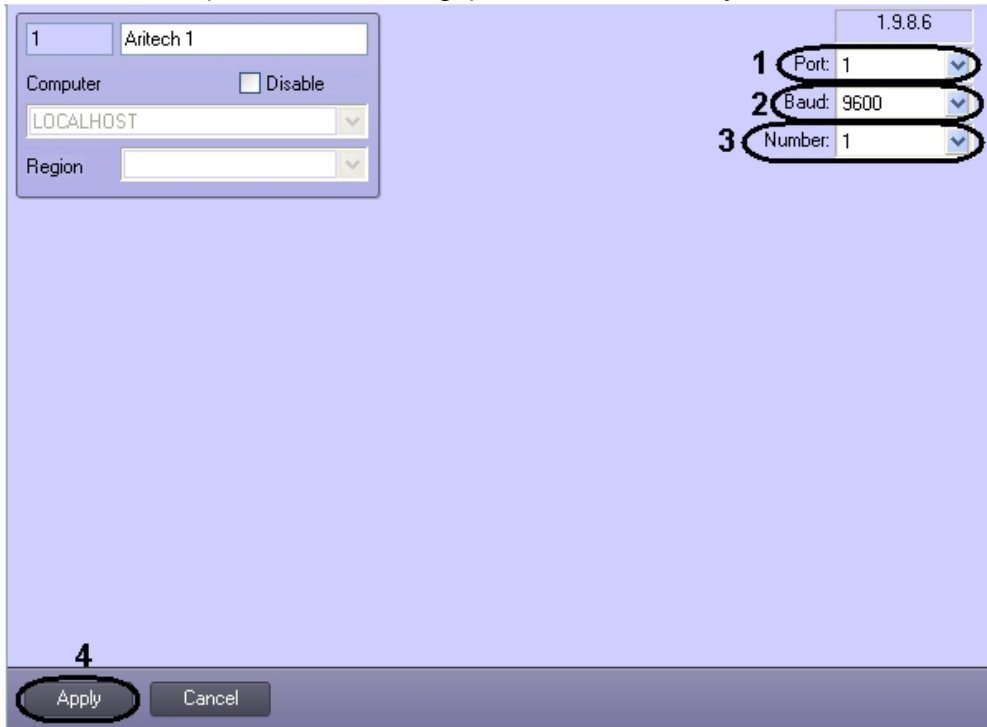
3.2 Configure the connection of the Aritech FSA to the ACFA PSIM software package

To configure the connection of the *Aritech FSA* to the *ACFA PSIM* software package, do the following:

1. Create the **Aritech** object on the basis of the **Computer** object on the **Hardware** tap of the **System settings** dialog window.



2. Set the connection parameters on settings panel of the **Aritech** object:



- a. From the **Port:** drop-down list select the port of connection the *Aritech* controller to the *ACFA PSIM* software package (1).
 - b. From the **Baud:** drop-down list select the speed of controller’s connection (2).
 - c. From the **Number:** drop-down list select the number of the connected *Aritech* controller (3).
3. Click the **Apply** button (4).

Configuring the connection of the *Aritech* FSA to the *ACFA PSIM* software package is completed.

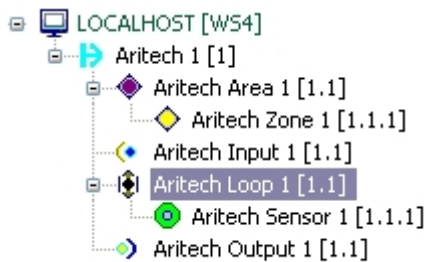
3.3 Create objects of the Aritech devices

The following elements of the *Aritech* FSA system are available in the *ACFA PSIM* software package: input relay (**Aritech Input** object), hardware loops (**Aritech Loop** object), armed zones (**Aritech Zone** object) and sensors (**Aritech Sensor** object).

Aritech Area, **Aritech Input**, **Aritech Loop** and **Aritech Output** objects are created on the basis of the **Aritech** object.

Aritech Zone object is created on the basis of the **Aritech Area** object.

Aritech Sensor object is created on the basis of the **Aritech Loop** object.



4 Working with the Aritech integration module

4.1 General information about working with the Aritech integration module

The following interface objects are used for working with *Aritech* integration module:

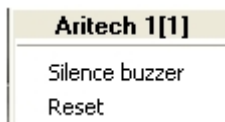
1. **Map.**
2. **Events protocol.**

Information about **Map** and **Events protocol** interface objects' configuration is given in the *Axxon PSIM* Software Package. [Administrator's Guide](#).

Working with these interface objects is given in details in *Axxon PSIM* Software Package. [Operator's Guide](#).

4.2 Controlling the Aritech controller

Controlling *the Aritech* controller is carried out in **Map** interactive window using feature menu of **Aritech** object.



Control the Aritech controller: