



Configuration of the Bosch BIS integration module

ACFA PSIM 1.1

Last update 11/22/2022

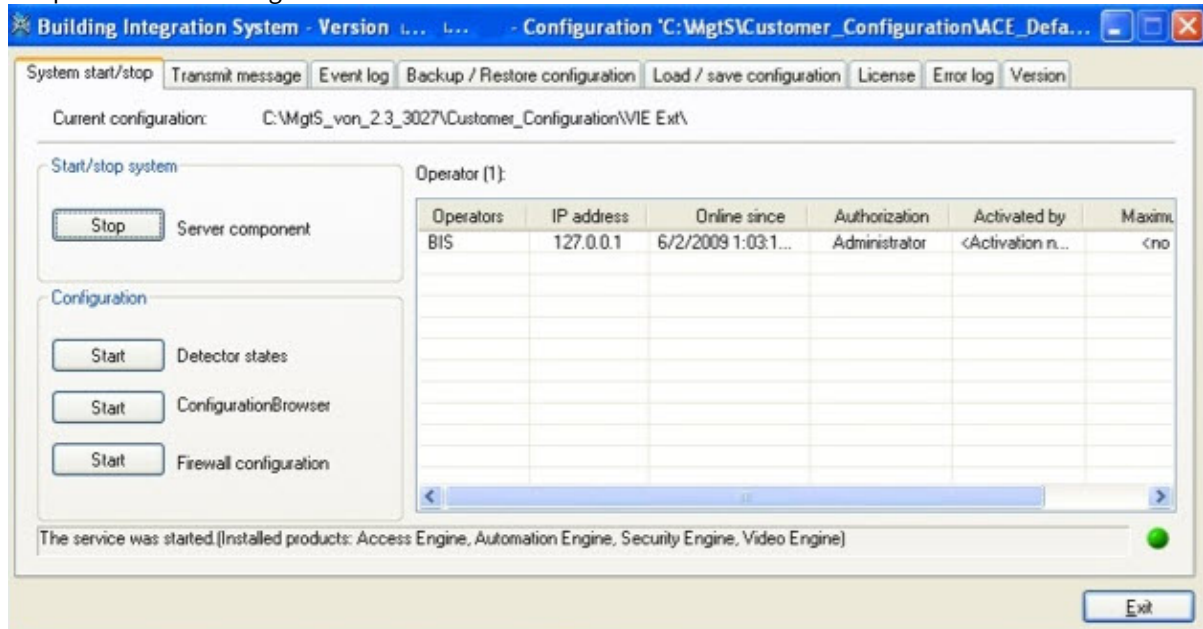
Table of Contents

1 Preconfiguration of the Bosch BIS software.....	3
2 Configuring the Bosch BIS connection to ACFA PSIM	4
3 Configuring the Bosch BIS reader	6
4 Configuring the Bosch BIS person classes.....	7

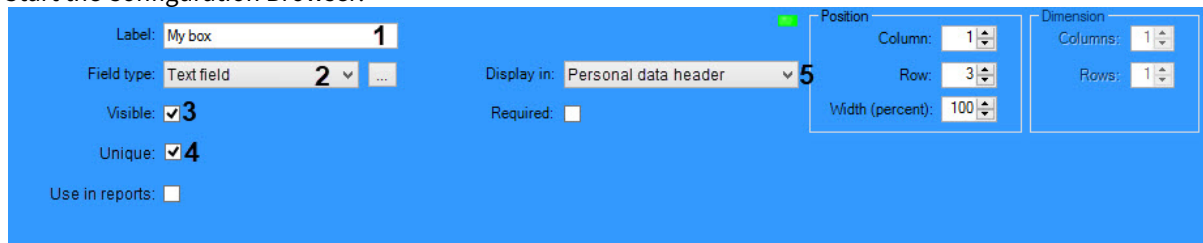
1 Preconfiguration of the Bosch BIS software

To preconfigure the **Bosch BIS** system, do the following:

1. Start the system server and make sure that the installed **Access Engine** and **Automation Engine** components are working.



2. Start the Configuration Browser.



3. In the **Infrastructure** section, go to the **ACE Custom fields** subsection, and then go to the **Create field** tab to create a new custom field.
This field is required for copying user data from *Axxon PSIM* to the **BIS** software. The *Axxon PSIM* can also receive (import) user data from the **BIS** system.
4. In the **Label** field (1), enter an arbitrary name that is unique in both *Axxon PSIM* and the **Bosch BIS** system.
5. From the **Field type** drop-down list (2) select **Text field**.
6. Set the **Visible** checkbox (3) to make the field visible.
7. Set the **Unique** checkbox (4) to enable the field check for uniqueness.
8. From the **Display in** drop-down list (5), select **Personal data header**.
9. Leave the rest of the fields as is.
10. Click the **Apply** button to save settings.

Note

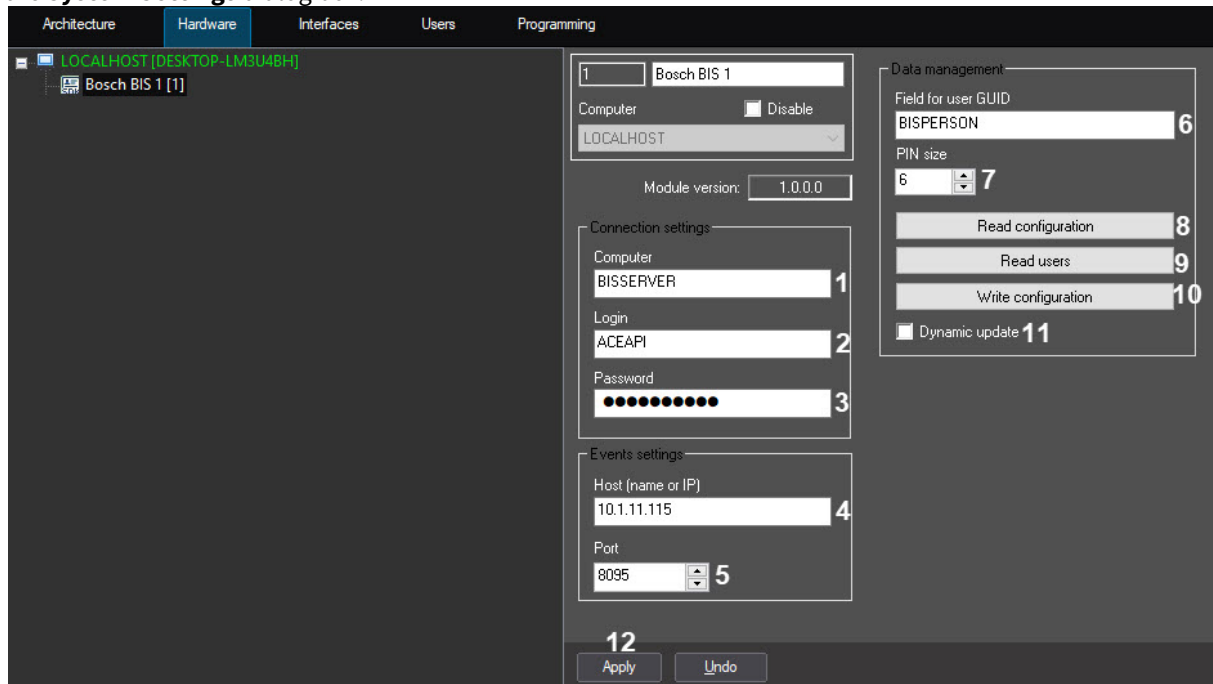
The operation of the **Bosch BIS** version 4.8 was tested.

The preconfiguration of the **Bosch BIS** system is now complete.

2 Configuring the Bosch BIS connection to ACFA PSIM

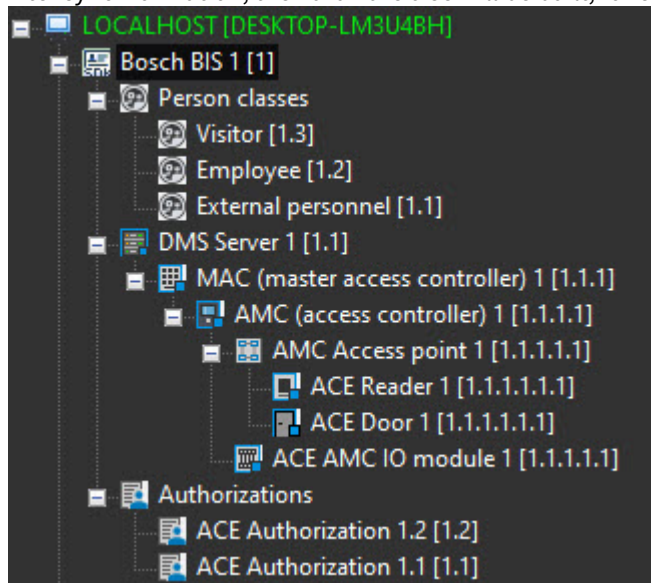
The *Bosch BIS* connection to *ACFA PSIM* is configured as follows:

1. Go to the **Bosch BIS** object which is created on the basis of the **Computer** object on the **Hardware** tab of the **System Settings** dialog box.



2. In the **Computer** field (1), specify the network name of the computer with the **BIS** server.
3. In the **Login** field (2), enter the login for authorization on the **BIS** server. It is set by the **BIS** system administrator.
4. In the **Password** field (3), enter the password for authorization on the **BIS** server. It is set by the **BIS** system administrator.
5. In the **Host (name or IP)** field (4), explicitly specify the IP address of the computer with *Axxon PSIM* to which the **BIS** server will send events.
6. In the **Port** field (5), specify a local free port to which the **BIS** server will send events.
7. In the **Field for user GUID** field (6), enter a unique field name preconfigured in the **BIS** software, see [Preconfiguration of the Bosch BIS software](#).
8. In the **PIN size** field (7), select the number of characters in the PIN code in the range from 3 to 6, the default value is 6.

9. Click the **Read configuration** button (8) to synchronize the hardware tree with the **BIS** software. After synchronization, the hardware tree will be built, for example:



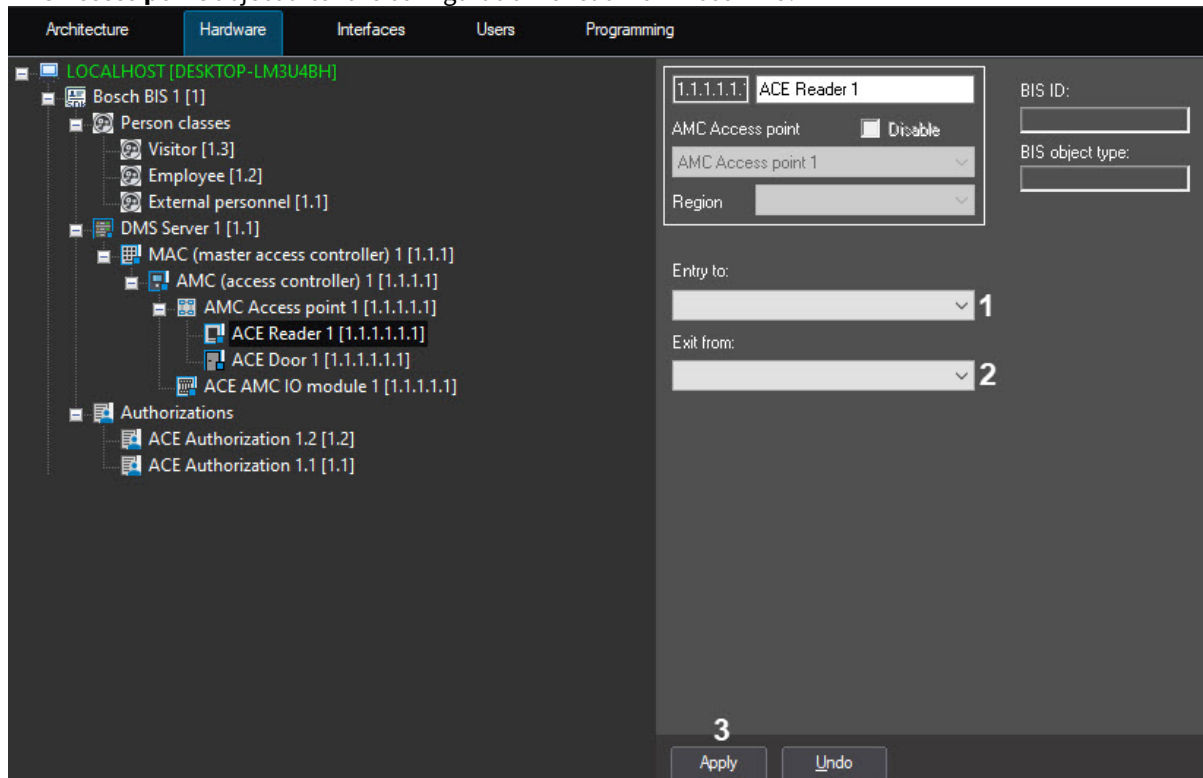
10. Click the **Read users** button (9) to import users from the **BIS** software, if any.
11. Click the **Write configuration** button (10) to copy users from *Axxon PSIM* to the **BIS** software.
12. Set the **Dynamic update** checkbox (11) to enable automatic update of user data in the **BIS** software when users are created, deleted and their parameters are changed.
13. Click the **Apply** button (12) to save settings.

The *Bosch BIS* connection to *ACFA PSIM* is now configured.

3 Configuring the Bosch BIS reader

The *Bosch BIS* reader is configured as follows:

1. Go to the configuration panel of the **ACE Reader** object, which is created automatically on the basis of the **AMC Access point** object after the configuration is read from *Bosch BIS*.



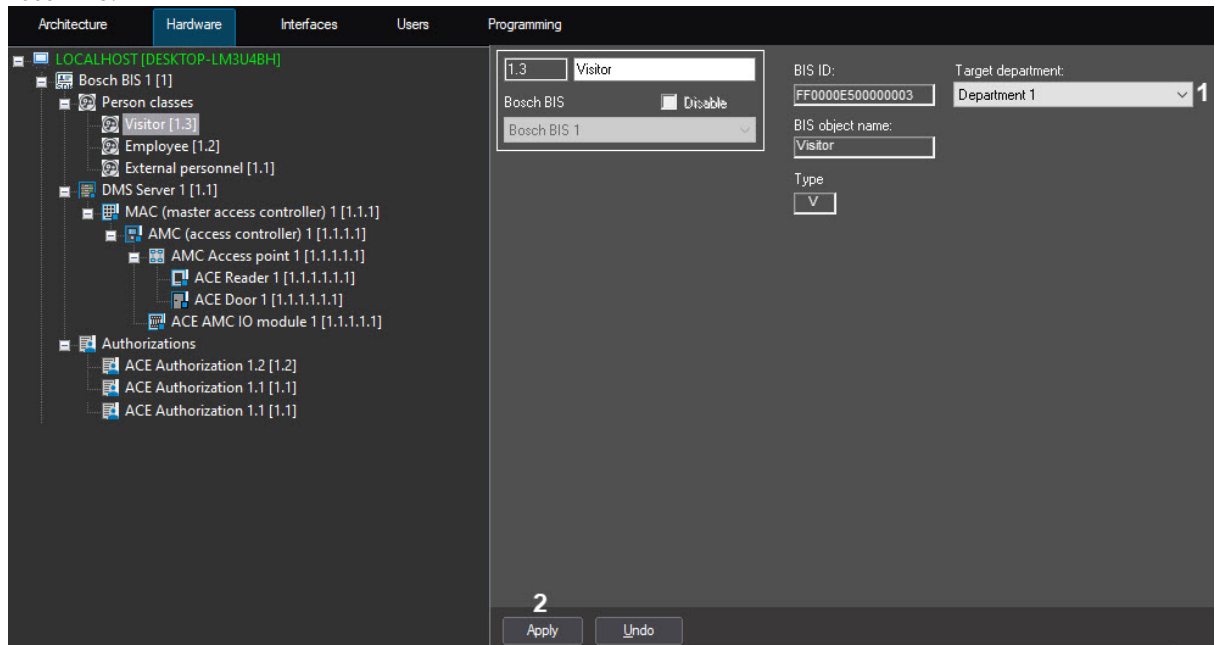
2. From the **Entry to** (1) and **Exit from** (2) drop-down lists, select the sections located on the the entrance and exit sides of this reader, respectively.
3. Click the **Apply** button (3) to save settings.

The *Bosch BIS* reader is now configured.

4 Configuring the Bosch BIS person classes

The *Bosch BIS* person class is configured as follows:

1. Go to the person class settings panel, which is created automatically after the configuration is read from *Bosch BIS*.



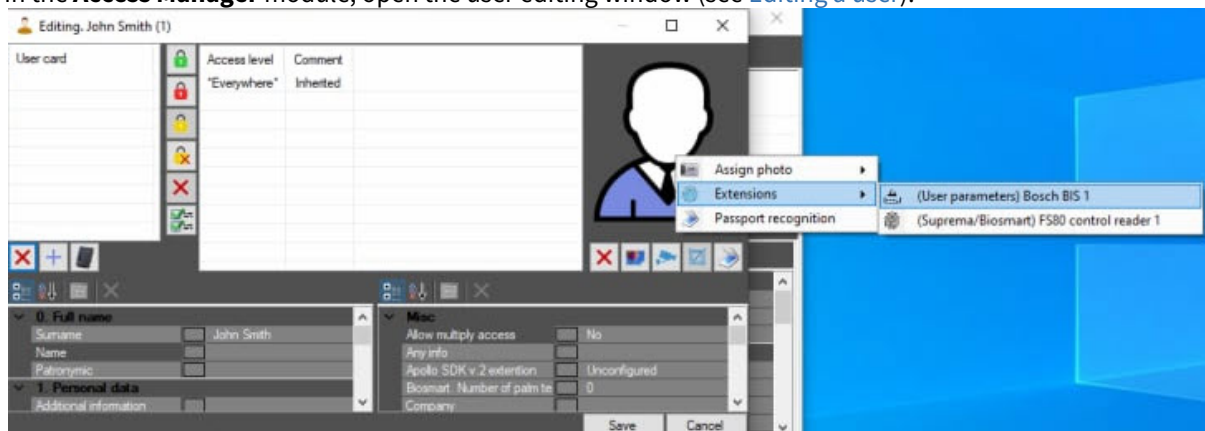
2. From the **Target department** drop-down list (1), select the required department for this class of persons.
3. Click the **Apply** button (2) to save settings.

The *Bosch BIS* person class is now configured.

To work with the *Bosch BIS* integration module, the **Access Manager** software module should be created and configured (see [Access Manager Module Settings and Operation Guide](#)).

Each user in the system should be assigned to a certain class of persons. To do this:

1. In the **Access Manager** interface object, assign *Bosch BIS* as a control reader (for details, see [Configuring control readers in the Access Manager](#)).
2. In the **Access Manager** module, open the user editing window (see [Editing a user](#)).



3. Right-click on the user's photo.

4. In the **Extensions** menu, select **(User parameters) Bosch BIS**.
This will open the **Bosch BIS: User parameters** window.
5. In the window that opens, select the class of persons to which the user belongs from the list **(1)**.

The screenshot shows a dialog box titled "Bosch BIS: User parameters". It contains a list box labeled "Person class:" with three entries: "Not set", "[FF0000E500000003] Visitor", and "[FF0000E500000001] Employee". The third entry is selected and highlighted in blue, with a large "1" below it. Below the list box are several controls: a text input field for "PIN:" (labeled "2"), a "Set" button (labeled "3"), a date picker for "Valid until" (labeled "4" with the date "11/ 7/2022"), a "Permanent" checkbox (labeled "5"), an "Unlock" button (labeled "6"), an "OK" button (labeled "7"), and a "Cancel" button.

6. In the **PIN** field (2), enter the user PIN code.
7. To save the PIN code, click the **Set** button (3).
8. In the **Valid until** field (4), specify the date until which the PIN code is valid, or set the **Permanent** checkbox (5) if the card isn't limited in time.
9. Click the **Unlock** button (6) to unlock the user.
10. Click the **OK** button (7) to save the changes and return to the user editing window.
11. In the user editing window, click the **Save** button to save the settings.

The user is now assigned to the person class.