



ACFA Intellect Installation Guide

Last update 28/02/2022

Table of contents

1	ACFA Intellect Installation Guide. Introduction.....	3
2	Hardware and software requirements.....	4
3	General information about ACFA Intellect software package	5
3.1	Structure of the ACFA Intellect software package.....	5
3.2	Purpose of ACFA Intellect FSA, ACS and PIDS integration modules.....	5
3.3	Purpose of ACFA-Intellect service modules.....	5
3.4	Operational architecture schemes available for some service modules	6
3.4.1	Server with a local client.....	6
3.4.2	Multi-server architecture	7
3.4.3	Server with a remote client	9
4	Installing, removing and updating of ACFA Intellect software package	11
4.1	General description of ACFA Intellect distribution kit.....	11
4.2	Installation of the ACFA Intellect software package	11
4.2.1	Installation of the Time and Attendance module	15
4.2.2	Installation of the ORC Wrapper integration module	15
4.2.3	Installation of the ApolloSDK v.3 integration module	15
4.3	Changing the ACFA Intellect software package.....	15
4.4	Repairing of the ACFA Intellect software package	19
4.5	Updating of the ACFA Intellect software package.....	21
4.6	Removing of the ACFA Intellect software package.....	22
4.7	Installation of the ACFA Intellect software package in the silent mode.....	25
4.7.1	Install	25
4.7.2	Update.....	30
4.7.3	Remove.....	30
5	Change of the ACFA Intellect localization language.....	31

1 ACFA Intellect Installation Guide. Introduction

ACFA Intellect Installation Guide is a reference guide for installation and configuration specialists of the *ACFA Intellect* software package.

This Guide contains:

1. General information about *ACFA Intellect* software package.
2. Installing of *ACFA Intellect* software package.
3. Changing of *ACFA Intellect* software package.
4. Repairing of *ACFA Intellect* software package.
5. Updating of *ACFA Intellect* software package.
6. Removing of *ACFA Intellect* software package.

To get detailed information on how to configure and work with any *ACFA Intellect* integration module see the corresponding document of this integration module.

2 Hardware and software requirements

The hardware and software requirements for *ACFA Intellect* correspond to the similar requirements for *Intellect (basic)* (see [Requirements for base PCs](#)).

3 General information about ACFA Intellect software package

3.1 Structure of the ACFA Intellect software package

ACFA Intellect software package contains following subsystems:

1. Access Control System (ACS).
2. Fire and Security Alarm (FSA).
3. Perimeter Intrusion Detection Systems (PIDS).
4. Service modules.

Each subsystem includes integration modules of corresponding devices. Service modules are modules designed to facilitate operation of integration modules.

3.2 Purpose of ACFA Intellect FSA, ACS and PIDS integration modules

Each FSA/ACS/PIDS system is a combination of software and hardware. The hardware is represented by a third-party manufacturer FSA/ACS/PIDS system integrated into the *ACFA Intellect* software package. The software consists of the integration modules which allow configuring the interaction between the *ACFA Intellect* software and the hardware.

The FSA, ACS and PIDS integration modules perform the following functions:

1. configuring the interaction between the *ACFA Intellect* software and the FSA/ACS/PIDS hardware;
2. processing the information incoming from the security panels, alarm sensors and other notifiers (if FSA functions are integrated);
3. processing the information incoming from the readers, electromechanical locks and other tools of access control (if ACS functions are integrated);
4. processing the information incoming from perimetral security sensors and sensors mounted on the object entry (if the PIDS functions are integrated);
5. managing the alarm actuators and firefighting-related actuators, i.e. sound and light notifiers (if the FSA functions are integrated);
6. managing the actuators – security lighting tools, tools of entry control, i.e. turnstiles, turnpikes, etc. (if the PIDS functions are integrated);
7. managing the access-related actuators – devices for locking and unlocking gates (if the FSA functions are integrated).

3.3 Purpose of ACFA-Intellect service modules

ACFA-Intellect service modules are designed to facilitate operation of integration modules. The following modules are included:

1. *Axxon Next data sender*.
2. *Access Manager*.
3. *Virtual Access Server*.
4. *Event Manager*.
5. *Database Import/Export*.
6. *User Import*.
7. *Temporary Access Levels*.
8. *Time & Attendance*.

The detailed information about each module is presented in the corresponding documentation sections.

 **Note.**

Legacy modules such as *Photo Identification* (replaced by *Event Manager*), *Visitor Management System* (replaced by *Access Manager*) and *Data Import/Export* (replaced by *User Import*) are also included into *ACFA-Intellect* installation kit in order to ensure compatibility between software versions. It is strongly not recommended to use legacy modules.

3.4 Operational architecture schemes available for some service modules

Note

The operational architecture schemes are available only for the following *ACFA Intellect* service modules:

- Time and Attendance;
- Event Manager;
- Access Manager.

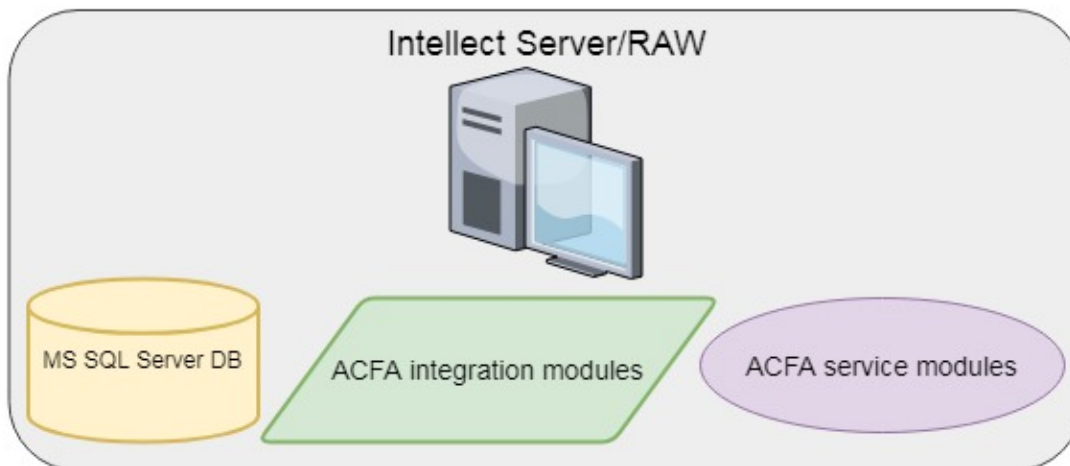
Three basic architectural schemes can be used:

1. Server with a local client – a single Server/RAW with the *ACFA Intellect* integration modules and service modules installed on it.
2. Multi-server architecture – several Servers/RAWs with the *ACFA Intellect* integration modules and service modules installed on each of them. In this case, service modules can be used on any of the Servers/RAWs.
3. Server with a remote client – one or more Servers/RAWs and Remote Clients. In this case, service modules are usually used on the Remote Client, and their primary configuration is performed on the Server/RAW.

3.4.1 Server with a local client

The ‘*Server with a local client*’ architectural scheme is a single Server/RAW with the *ACFA Intellect* integration modules and service modules installed on it. The data source is the MS SQL Server database. This architectural scheme is the easiest to set up, because service modules are created and configured only on one Server/RAW.

The model of the architectural scheme is presented below.

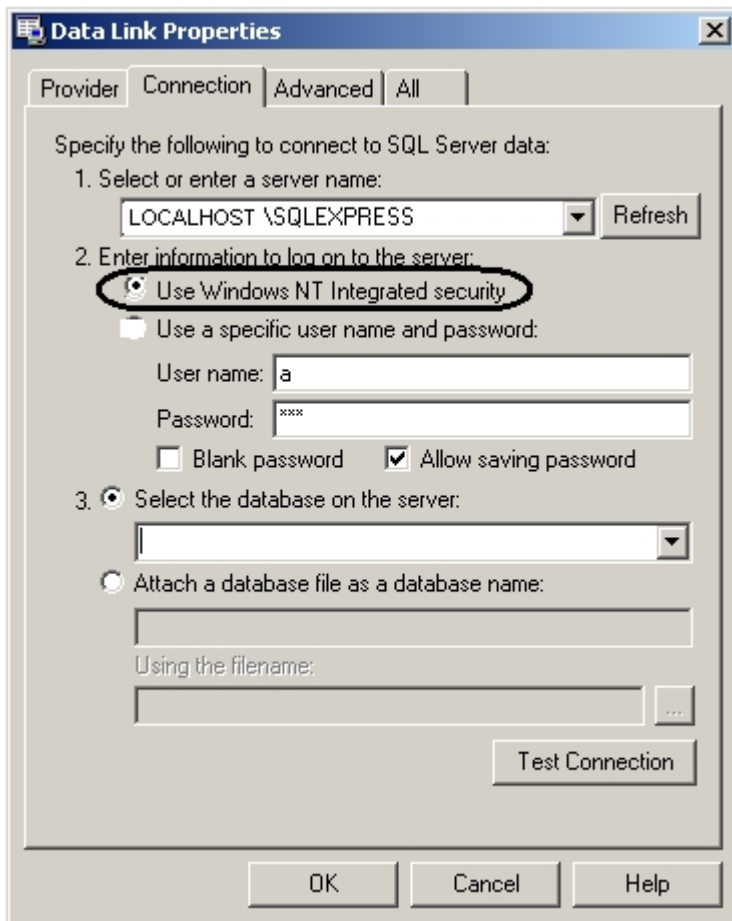


Note

This operational architecture scheme is available only for the following *ACFA Intellect* service modules:

- Time and Attendance;
- Event Manager;
- Access Manager.

If the ‘*Server with a local client*’ architectural scheme is used, then it is not necessary to specify a username and password when setting up a data source — the **Use Windows NT Integrated security** can be selected to log in to the Server.



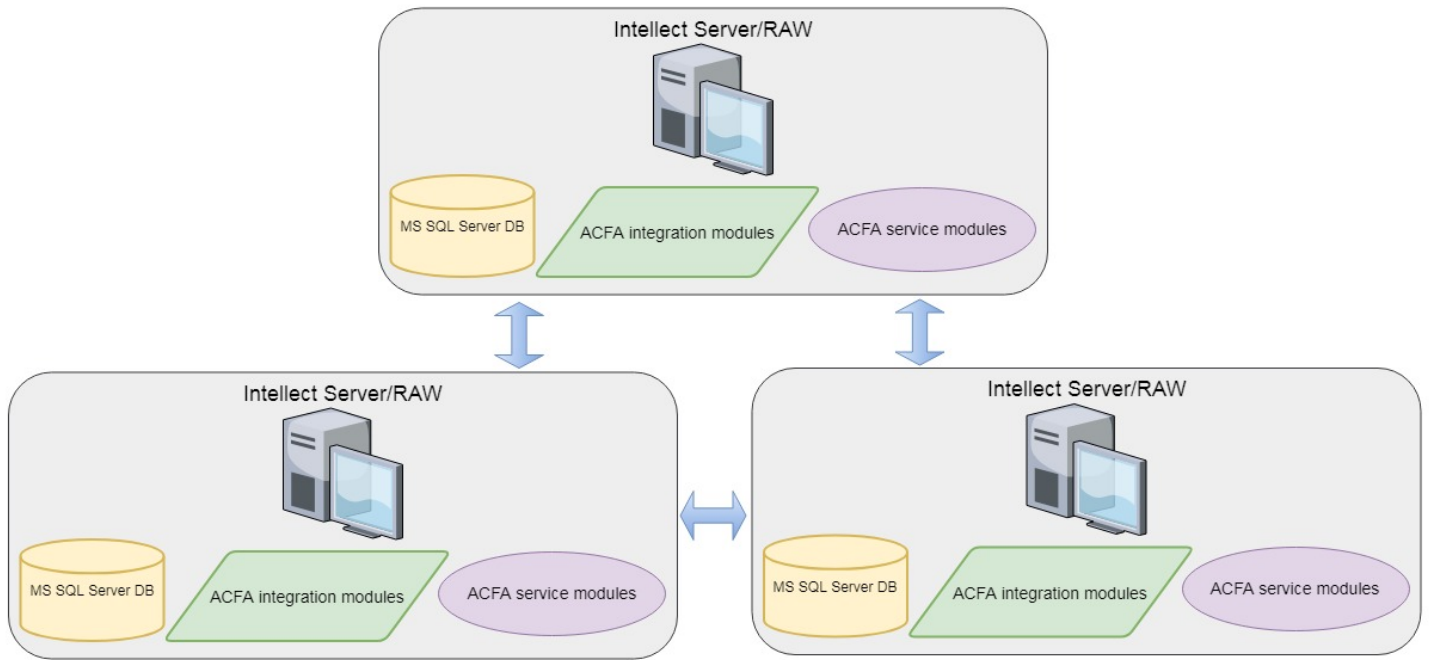
3.4.2 Multi-server architecture

The 'Multi-server architecture' scheme includes several Servers/RAWs with the *ACFA Intellect* integration modules and service modules installed on each of them. In this case, service modules can be used on any of the Servers/RAWs.

The scheme includes the following necessary components:

1. A Server with the *ACFA Intellect* integration modules and service modules installed on it.
2. RAWs with the *ACFA Intellect* integration modules and service modules installed on each of them.
3. The MS SQL Server database.

The model of the architectural scheme is presented below.

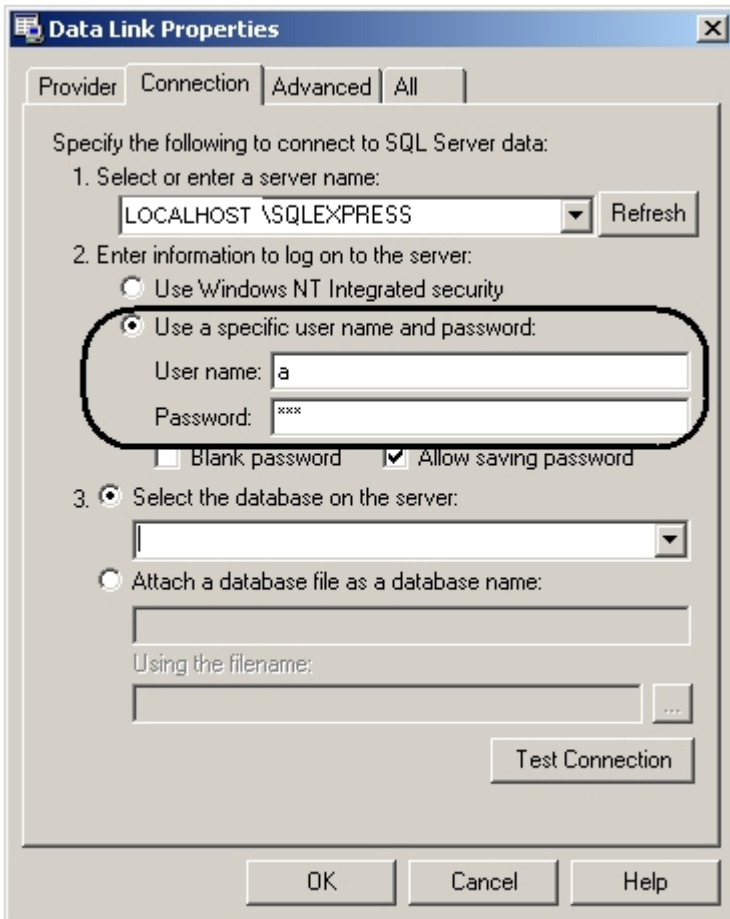


Note

This operational architecture scheme is available only for the following *ACFA Intellect* service modules:

- Time and Attendance;
- Event Manager;
- Access Manager.

When configuring the *Intellect* Server, it is necessary to specify a username and password to configure the database server login.



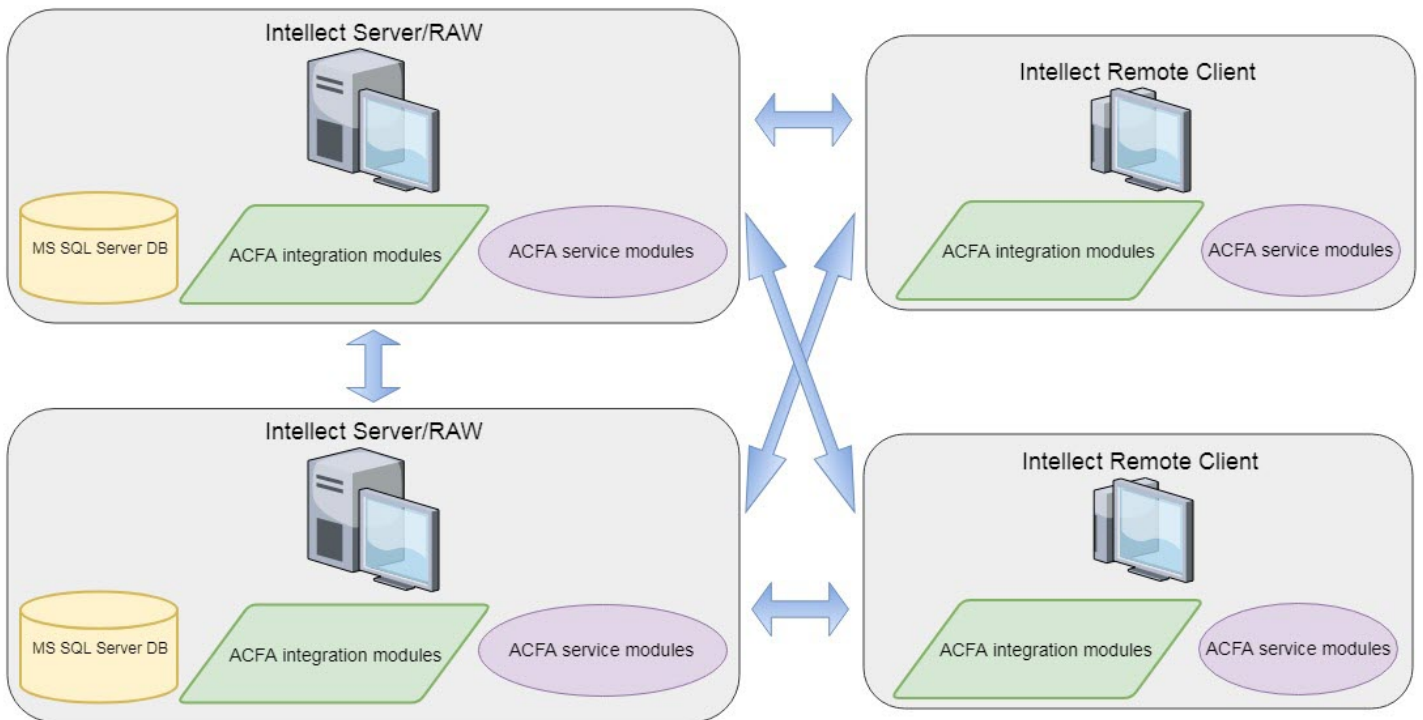
3.4.3 Server with a remote client

The 'Server with a remote client' architectural scheme includes one or more Servers/RAWs and Remote Clients. In this case, service modules are usually used on the Remote Client, and their primary configuration is performed on the Server/RAW.

The scheme includes the following necessary components:

1. A Server with the *ACFA Intellect* integration modules and service modules installed on it.
2. RAWs and Remote Clients with the *ACFA Intellect* integration modules and service modules installed on each of them.
3. The MS SQL Server database.

The model of the architectural scheme is presented below.



Note

This operational architecture schemes is available only for the following ACFA Intellect service modules:

- Time and Attendance;
- Event Manager;
- Access Manager.

When configuring the *Intellect Server*, it is necessary to specify a username and password to configure the database server login in the same way as for the 'Multi-server architecture' scheme (see [Multi-server architecture](#)).

4 Installing, removing and updating of ACFA Intellect software package

4.1 General description of ACFA Intellect distribution kit

ACFA Intellect is supplied as a software installation package (distribution kit). The current version of the distribution kit can be downloaded from the official [AxxonSoft](#) website.

The distribution kit contains all the necessary software components for installing the *ACFA Intellect* software package on a base computer.

The distribution kit allows you to install, restore and remove the *ACFA Intellect* software package.

Attention!

- Prior to installing, restoring or removing the *ACFA Intellect* software package, the *Intellect* operation should be shut down.
- Administrator rights are required for installing, restoring or removing *ACFA Intellect*.

4.2 Installation of the ACFA Intellect software package

The *ACFA Intellect* software is installed as a part of the *Intellect* software. Information about compatibility of the *Intellect* software versions and *ACFA Intellect* is presented by link: [General information about product releases and versions compatibility](#).

Important!

The *ACFA Intellect* software should be installed on both **Server/Remote administrator workplace (RAW)** and **Client** (for details, see [Intellect software. Administrator's Guide](#)).

In a distributed security system, both integration and service modules of *ACFA Intellect* should be installed on all computers where they will be used and configured (Server, RAW, Client). *ACFA Intellect* versions must be the same on all computers within the distributed system. For more details on how to install and configure base *Intellect* software for distributed architecture, refer to [Intellect software. Administrator's Guide](#).

Note

When installed on Server or RAW, *ACFA Intellect* provides functions for configuration, control and monitoring. On Client the modules are required for control and monitoring.

Note.

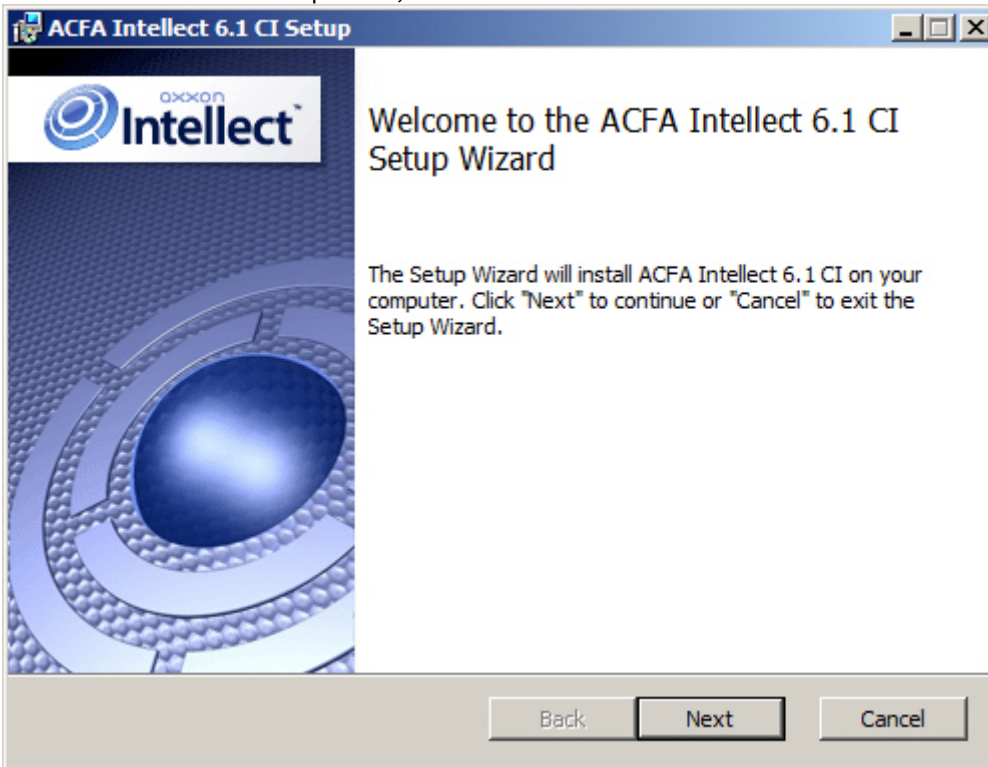
Installer language and *ACFA Intellect* installation language are defined by the language selected for the base *Intellect* installation. Change of localization language with the help of language packs after base *Intellect* installation will not influence the language of *ACFA Intellect* installation.

Language of the *ACFA Intellect* localization can be changed using the language packs (see [Change of the ACFA Intellect localization language](#)).

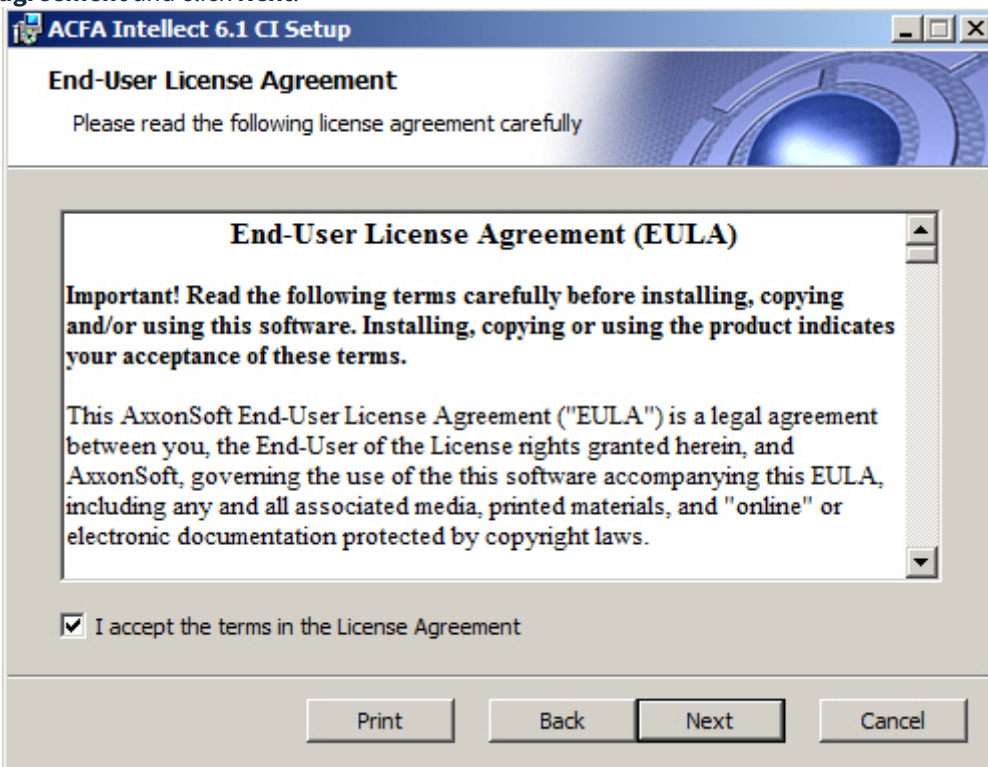
To install *ACFA Intellect*, do the following:

1. In the root directory of the distribution package, run the setup.exe executable file.

2. To continue the installation process, click **Next**.



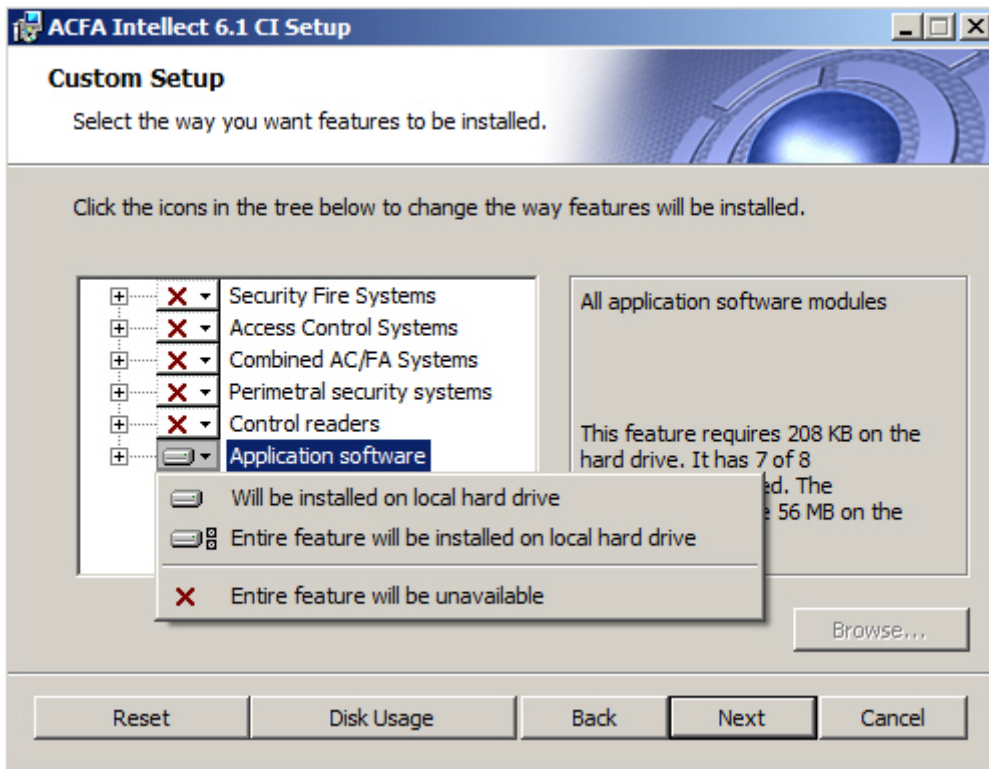
3. Read the terms of the license agreement carefully. Then set the radio button to **I accept the terms of the License agreement** and click **Next**.



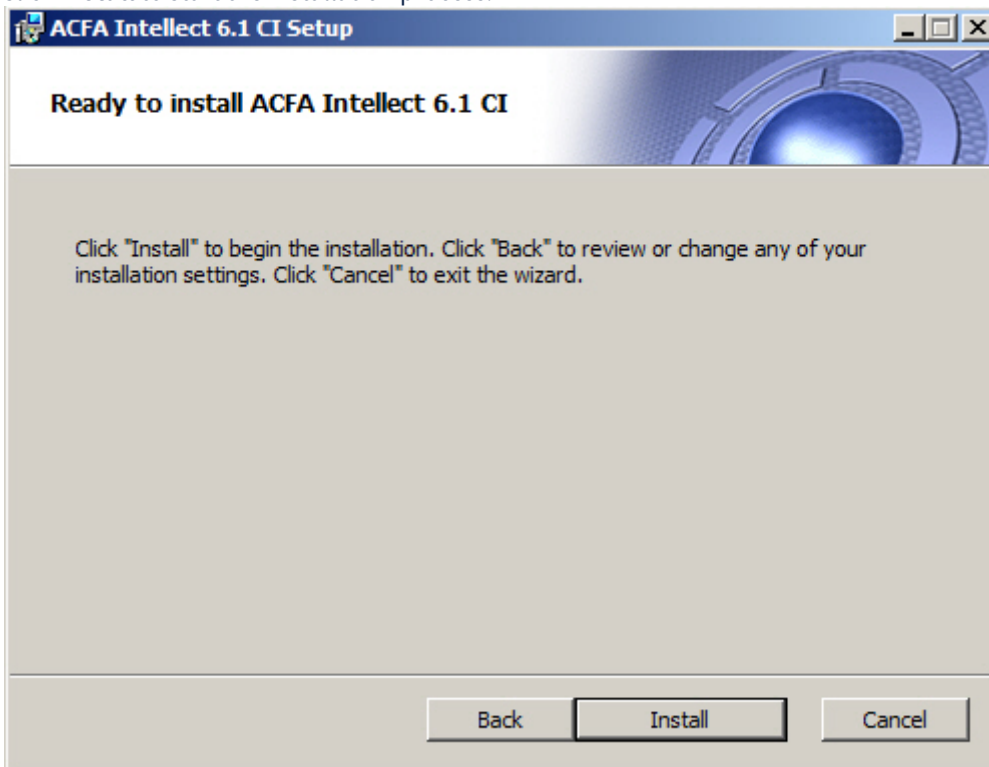
4. In the **Custom Setup** dialog window, select modules which are to be installed. To install module or *ACFA Intellect* subsystem select the **Entire feature will be installed on local hard drive** item. To accept all changes and continue installation process, click the **Next** button.

 **Note**

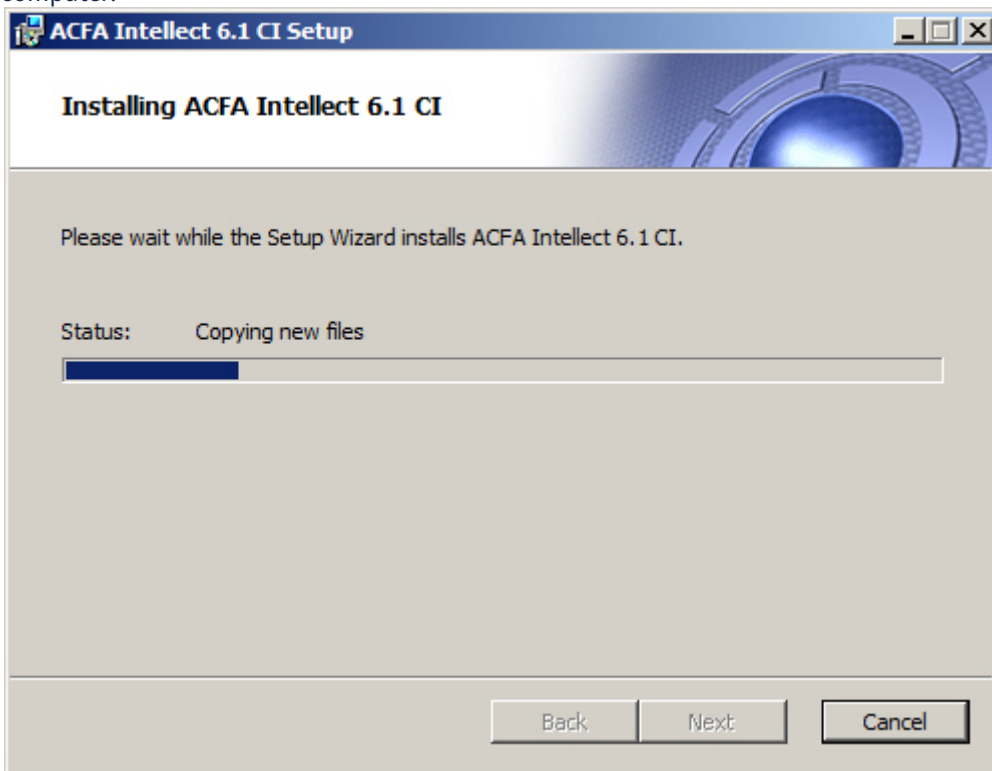
When you select a component in the list, the area on the right displays information about this component and the amount of disk space required to install it.



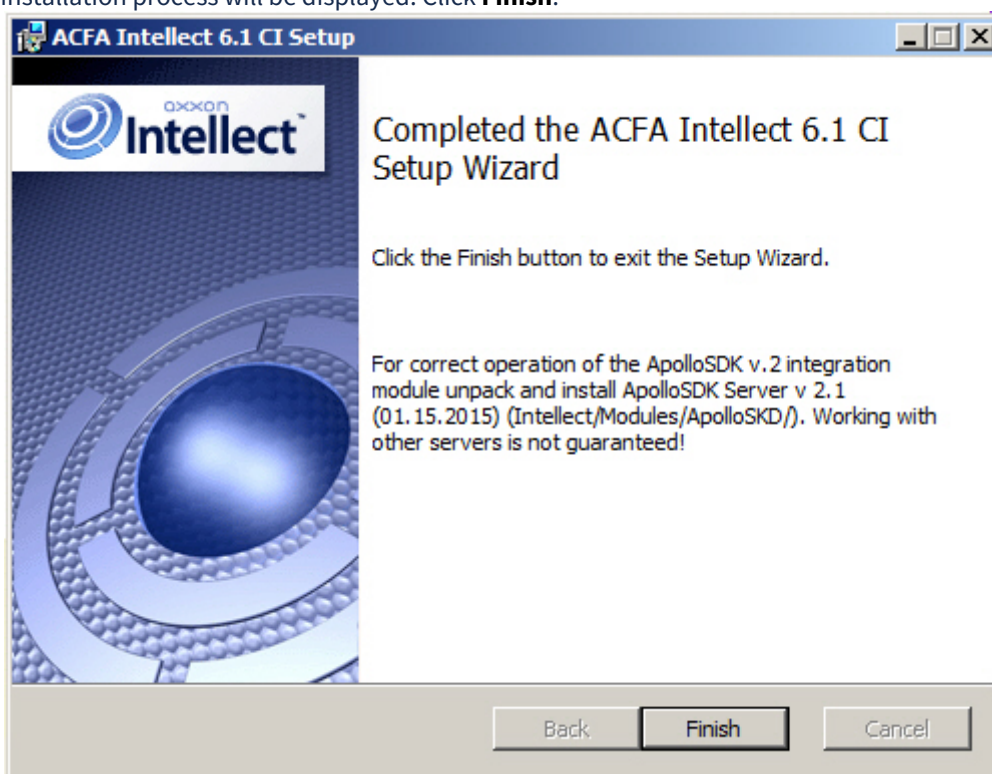
5. Click **Install** to start the installation process.



- As a result, the necessary components of the *ACFA Intellect* software package will be copied to hard drive of your computer.



- After all software components are successfully copied on your hard drive, the message about the completion of the installation process will be displayed. Click **Finish**.



The *ACFA Intellect* software package installation is finished.

Note.

After the *ACFA Intellect* is installed it is recommended to update the DB structure using the `idb.exe` utility located in the Intellect software directory. Database updating is performed by clicking the **Update database** button in the utility window.

After *ACFA Intellect* software package is installed, some modules may require additional actions or installation of additional software. A description of the installation features for such modules is given in the subsections below.

Attention!

To use the integration modules that are included in the **Security Equipment** component, it is necessary to install the following software:

- The *Drivers Pack* driver package (download the distribution package here: [Drivers Pack](#));
- The Internet Explorer browser version 11 or higher.

4.2.1 Installation of the Time and Attendance module

The *Time and Attendance* module is a part of the *ACFA Intellect* software. For the correct module operation, after the *ACFA Intellect* installation, it is necessary to update the database using the `updateDB.exe` utility (for details, see [Time and Attendance Module Settings and Operation Guide](#)).

4.2.2 Installation of the ORC Wrapper integration module

The *ORC Wrapper* integration module is a part of the *ACFA Intellect* software. For the correct module operation, after the *ACFA Intellect* installation, do the following:

1. Go to the *Intellect* software installation directory\Modules\ORCServer.
2. Start the `setup.exe` executive file and install the required components.

The *ORC Wrapper* integration module is installed.

4.2.3 Installation of the ApolloSDK v.3 integration module

Installation of the *ApolloSDK v.3* integration module is performed after completion the installation of the *ACFA Intellect* software package. To install the *ApolloSDK v.3* integration module, do the following:

1. Unpack the **ApolloSDK v2.1(01.15.2015) Installer** archive which is located in the *Intellect software installation directory*\Modules\ApolloSDK.
2. Run the **ApolloSDK v.2.1 (01.15.2015) Installer\ApolloSDKSetup.exe** executive file to install the *Apollo* server version 2.1.

Attention!

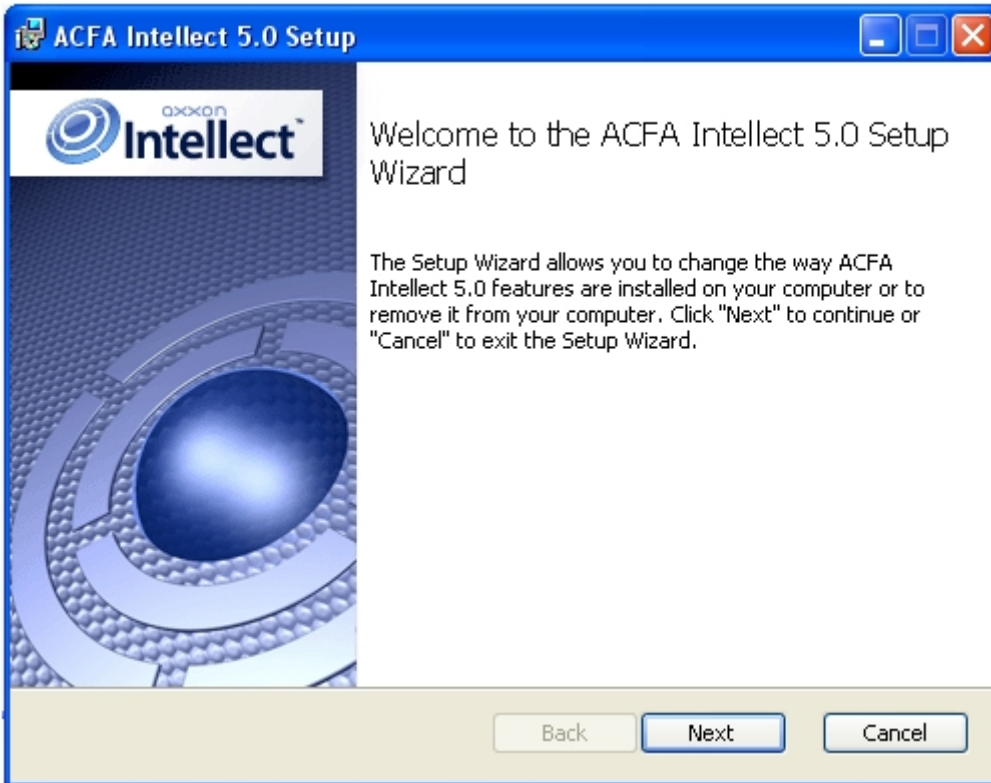
Functioning of the *ApolloSDK v.3* with other servers is not guaranteed.

4.3 Changing the ACFA Intellect software package

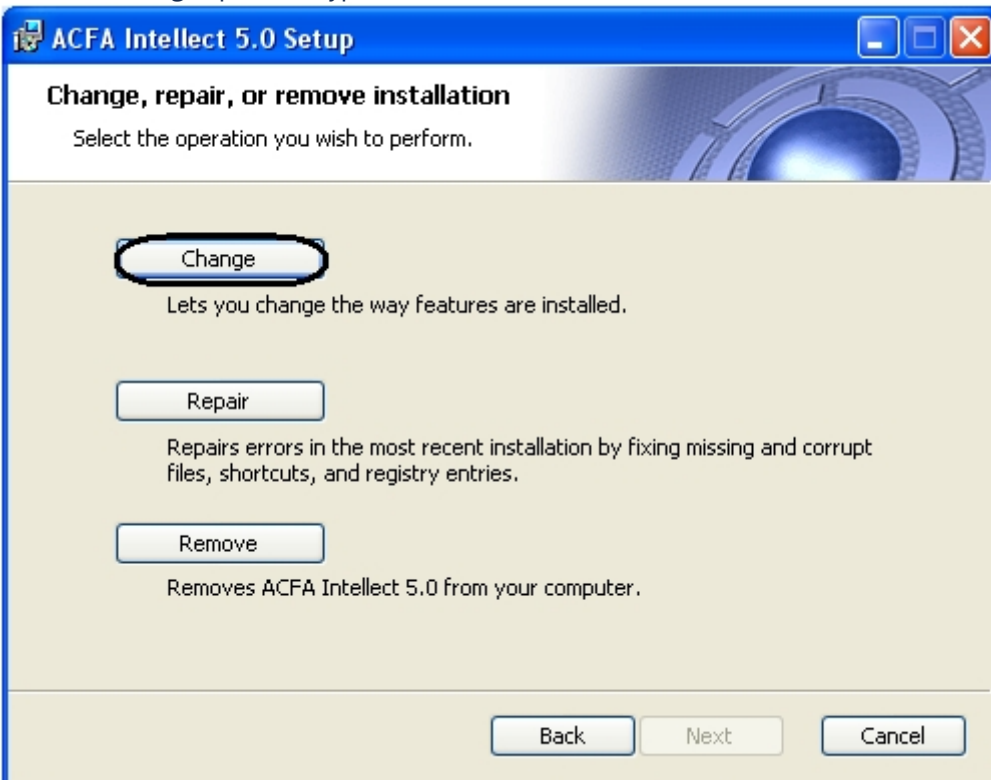
To add or remove some *ACFA Intellect* components, do the following:

1. In the root directory of the distribution package, run the `setup.exe` executable file

2. To continue the change process, click **Next**.



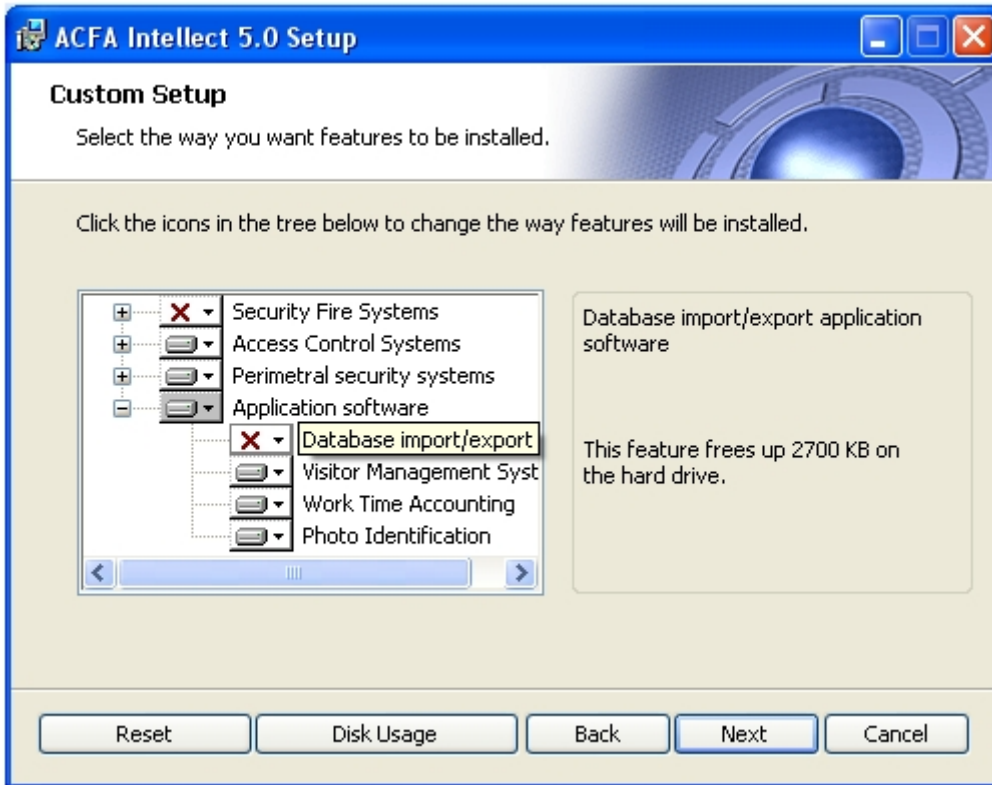
3. Select the **Change** operation type and click **Next**.



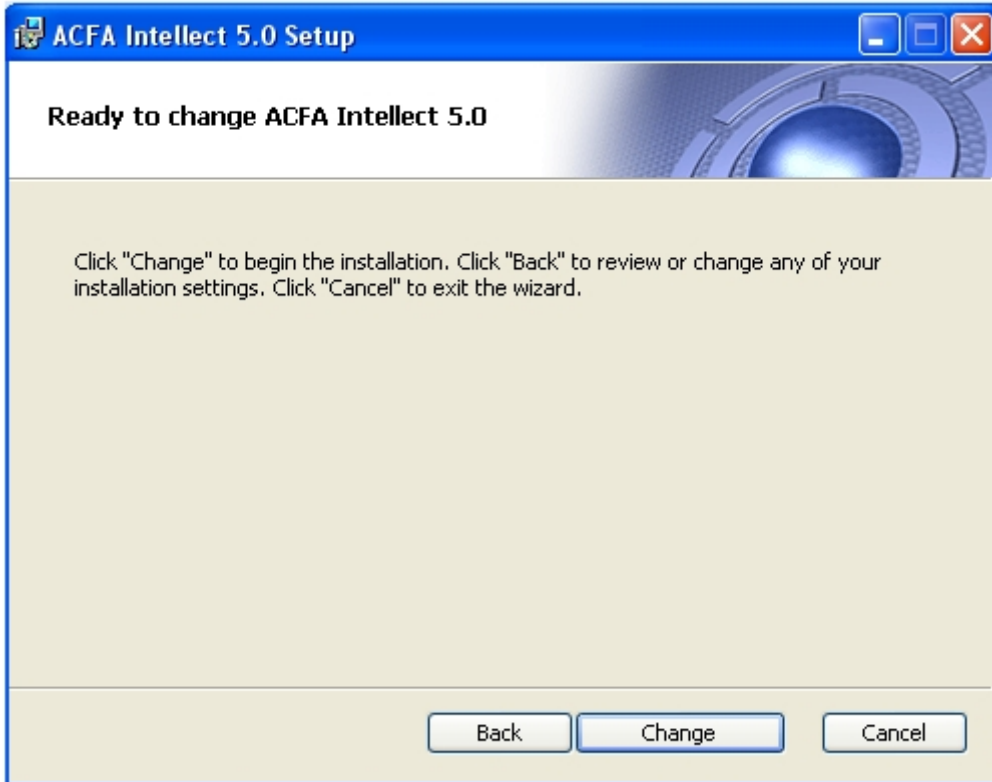
4. In the opened **Custom Setup** window, select components which are to be installed or removed. To install module or *ACFA Intellect* subsystem, select the **Entire feature will be installed on local hard drive** item. To remove component, select the **Entire feature will be unavailable** item. When all required components are selected, click the **Next** button.

Note

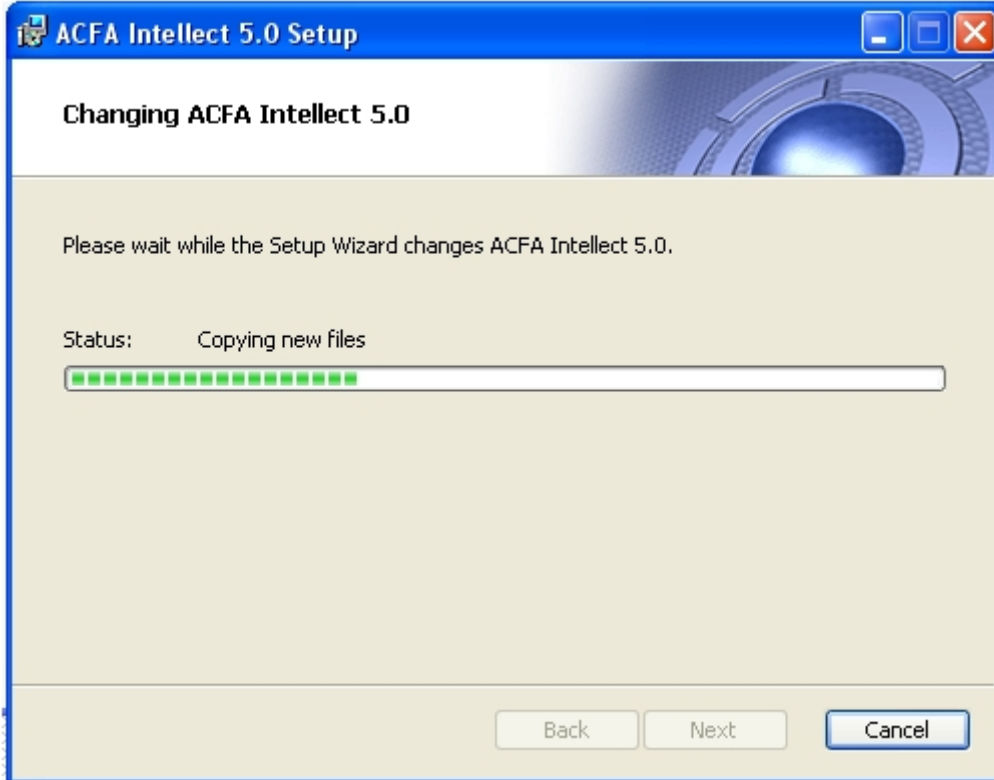
When you select a component in the list, the area on the right displays information about this component and the amount of disk space required to install it.



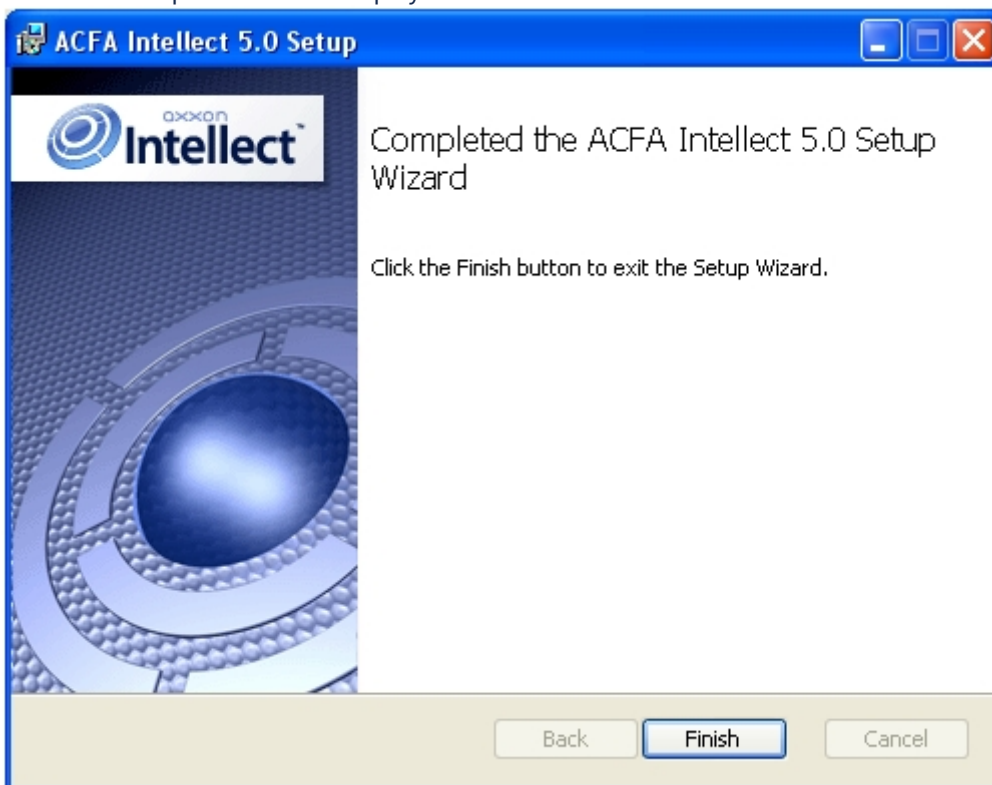
5. Click **Change** to start the change process.



6. As a result, the process of installing and/or removing required components of *ACFA Intellect* will start.



7. After all software components are successfully copied/removed on your hard drive, the message about the completion of the installation process will be displayed. Click **Finish**.

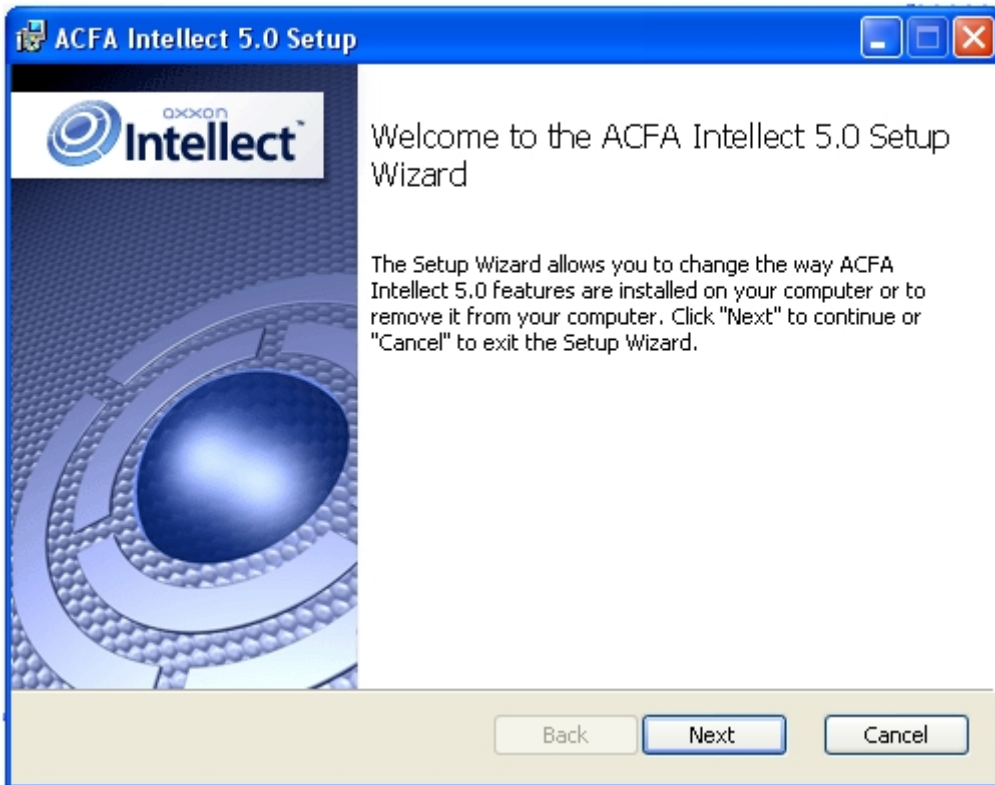


Change of *ACFA Intellect* software package is completed.

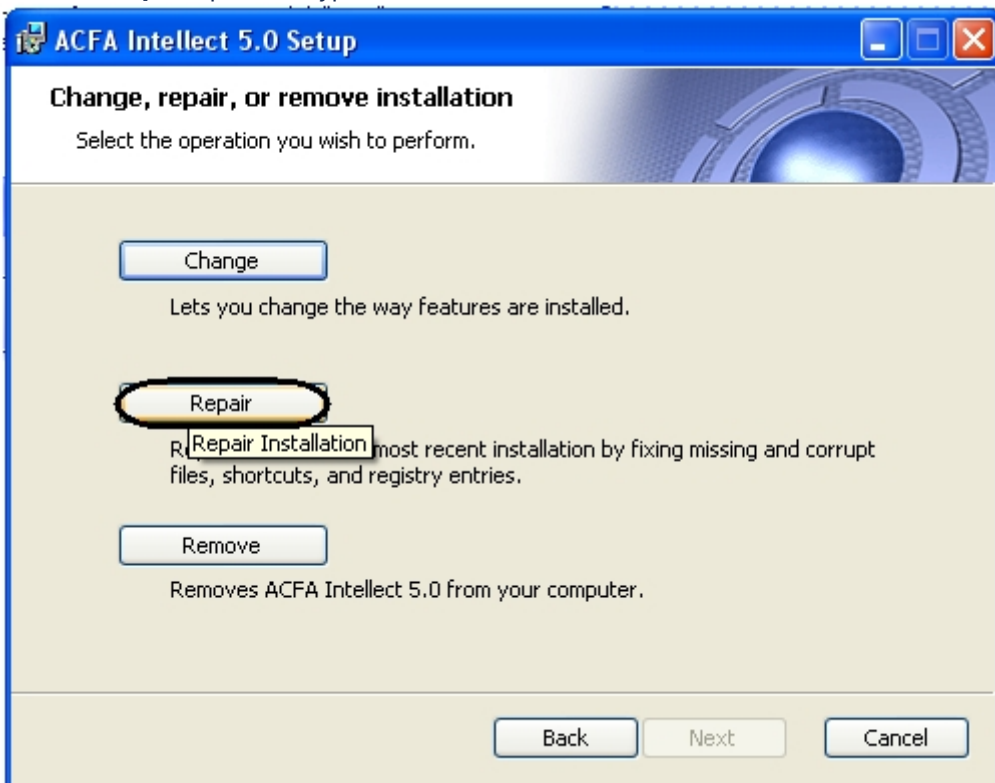
4.4 Repairing of the ACFA Intellect software package

To correct mistakes occurred after the *ACFA Intellect* installation by repair failing files, tags and registry entries, do the following:

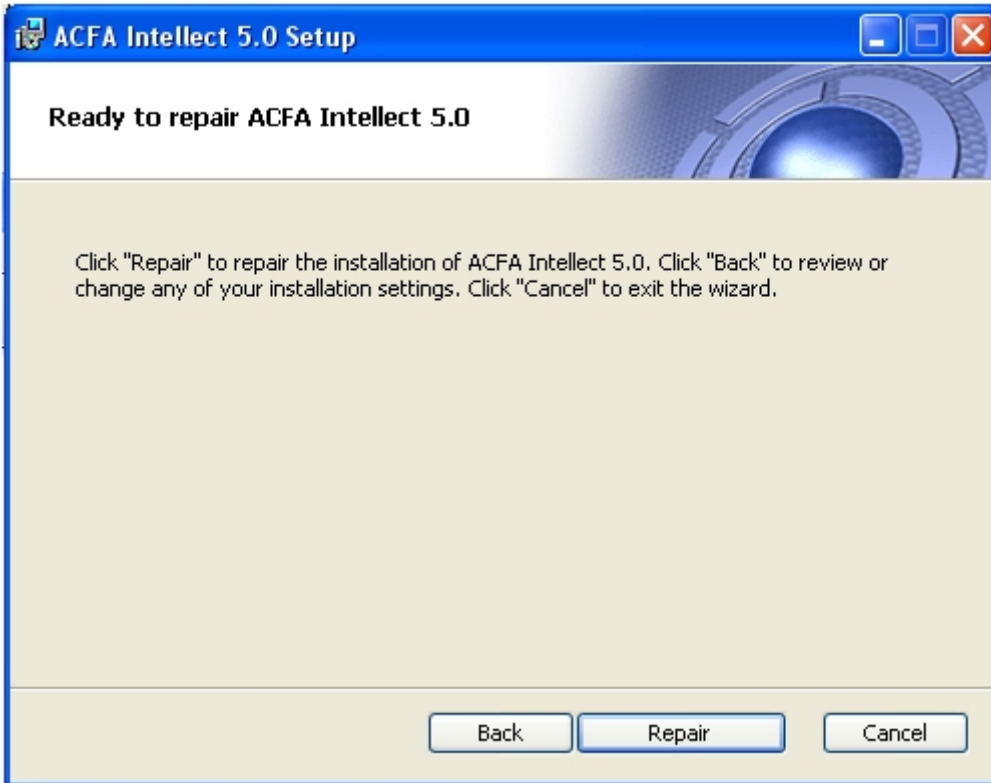
1. In the root directory of the distribution kit, run the setup.exe file.
2. To continue the repair process, click **Next**.



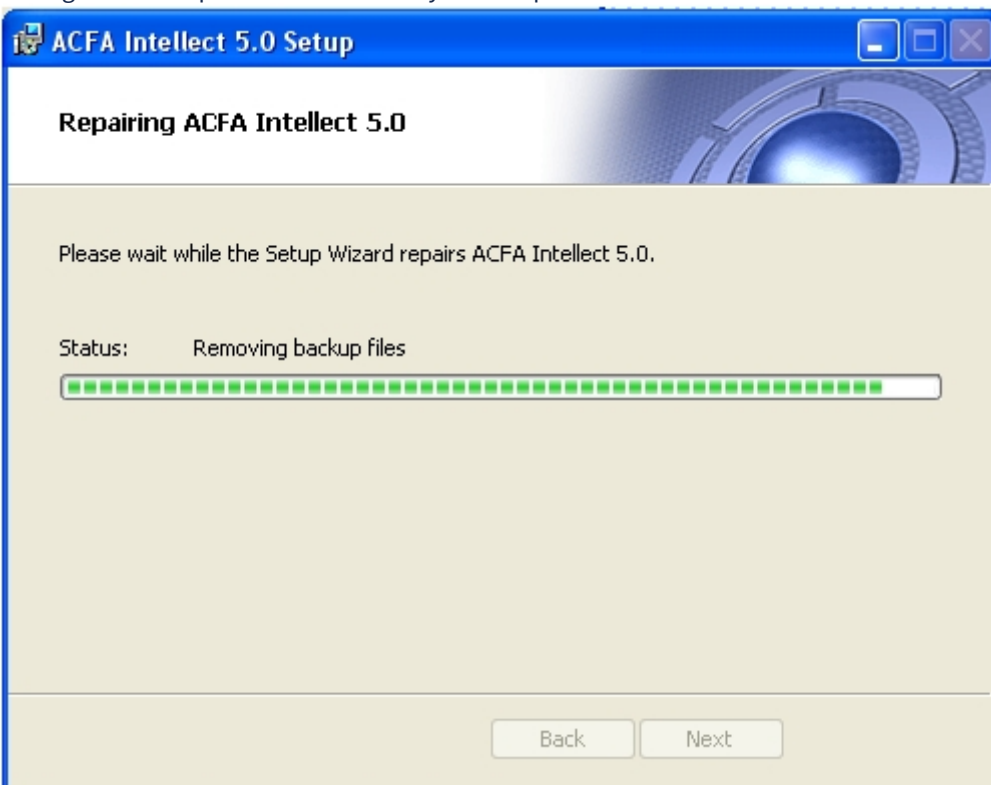
3. Select the **Repair** operation type and click **Next**.



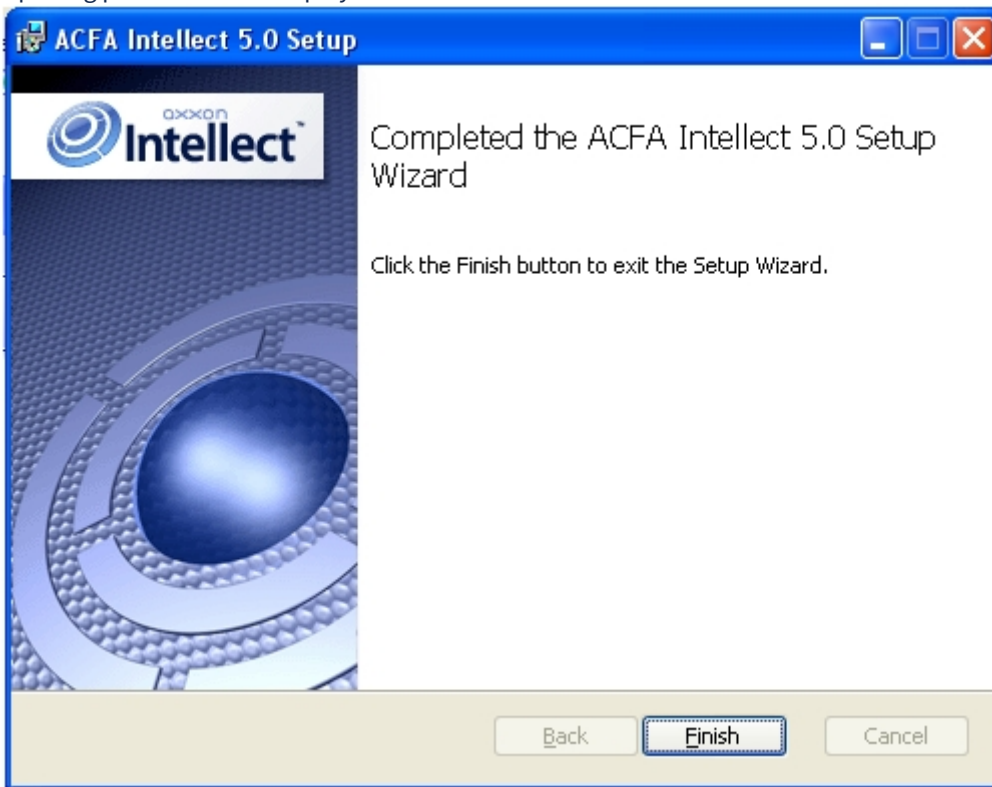
4. Click **Repair** to start the repair process.



5. As a result, the installed components will be checked and the necessary components of the *ACFA Intellect* software package will be copied to hard drive of your computer.



6. After all software components are successfully copied on your hard drive, the message about the completion of the repairing process will be displayed. Click **Finish**.



Repairing of the *ACFA Intellect* software package is completed.

4.5 Updating of the ACFA Intellect software package

To update the *ACFA Intellect* software package from versions which are differed from new version in the first number (e.g from version 4.8.8.to version 5.0), remove manually the old version of the *ACFA Intellect* software package and then install new version of product (see [Removing of the ACFA Intellect software package](#) and [Installation of the ACFA Intellect software package](#) sections).

Updating of the *ACFA Intellect* from version 5.0 and above is performed in standard mode (see [Installation of the ACFA Intellect software package](#) section). To start updating run the setup.exe file from installer of new version. When the *ACFA Intellect* updating it is possible to change installation of *ACFA Intellect* old version, add or remove some modules.

Attention!

In case you update *ACFA Intellect* to a version which includes a discontinued integration module from a version, where this module was still supported, then the discontinued integration module will be deleted without the possibility of further use. Only log files and database tables will remain from the deleted integration module.

Attention!

Before you upgrade the *Intellect* base software to version 4.11.1, it is necessary to create a backup copy of the main database, and after the upgrade, restore this copy of the database (see [The idb.exe utility for converting databases, selecting database templates and making backup copies of databases](#)). Otherwise, after updating the *Intellect*, all additional fields of the *ACFA Intellect* software package will be deleted from the database and the functionality of the integrations will be impaired.

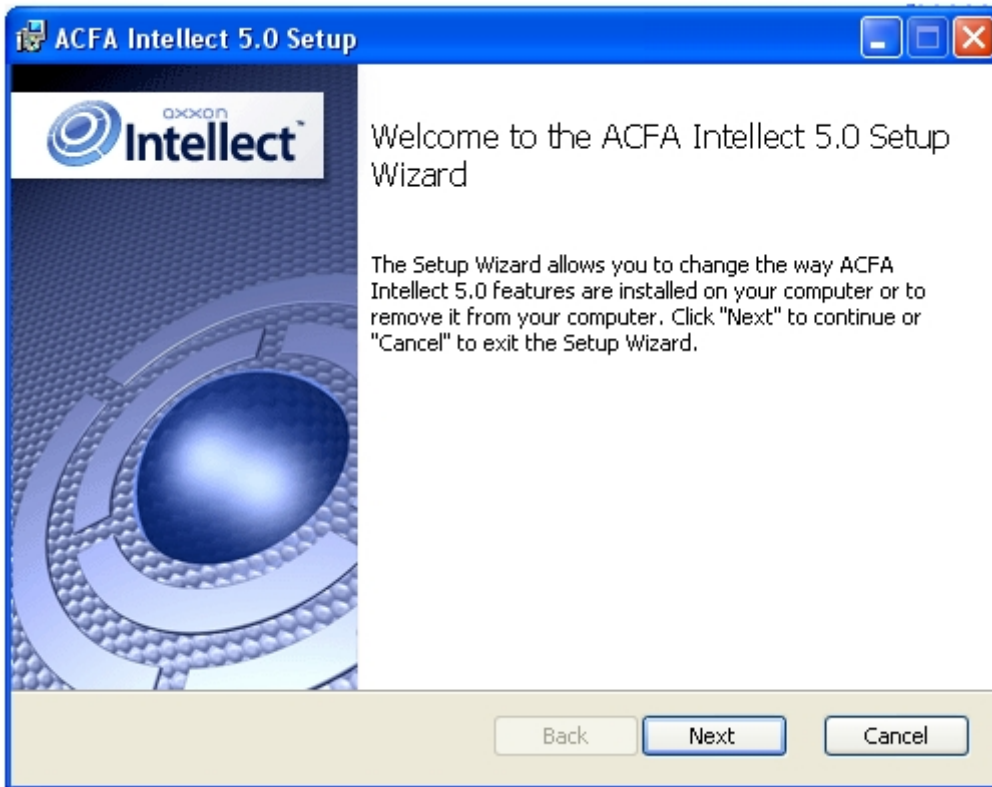
Note

Change of installation is possible without updating the ACFA Intellect version (see [Changing the ACFA Intellect software package](#)).

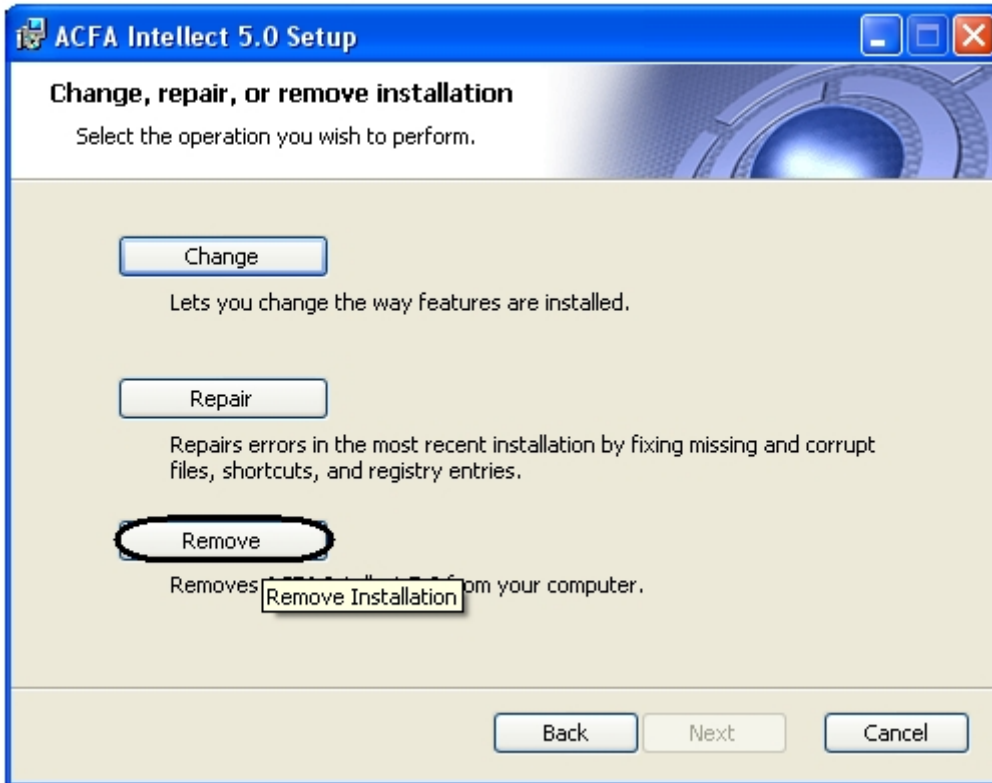
4.6 Removing of the ACFA Intellect software package

To remove *ACFA Intellect* software package, do the following:

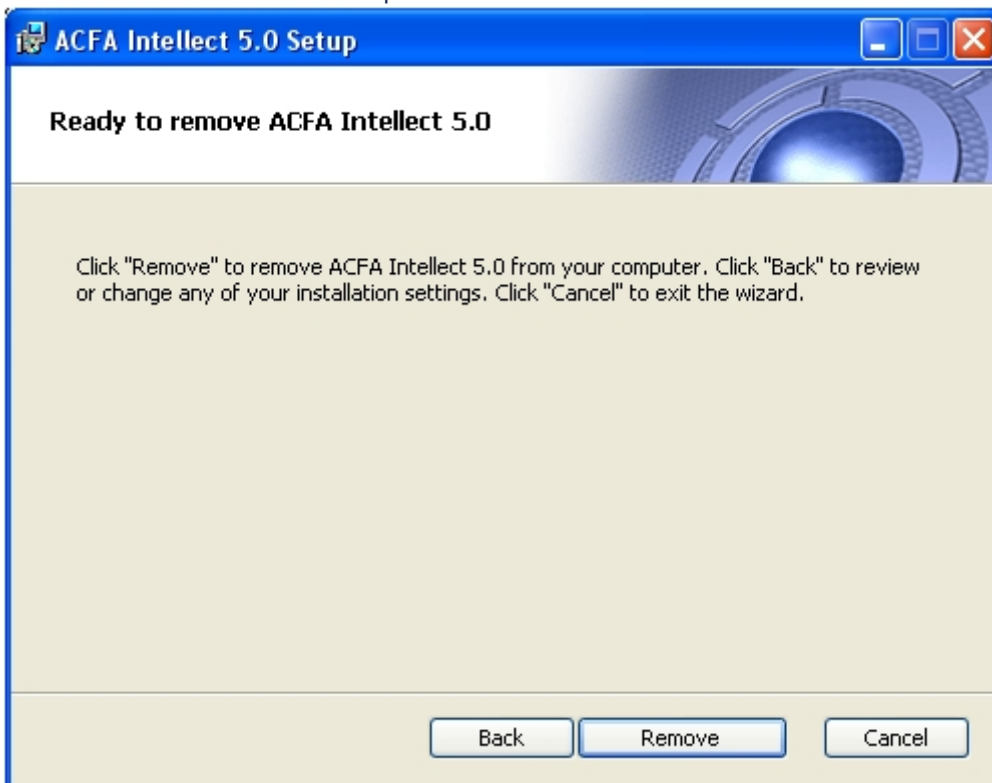
1. In the root directory of the distribution package, run the setup.exe executable file
2. To continue the removal process, click **Next**.



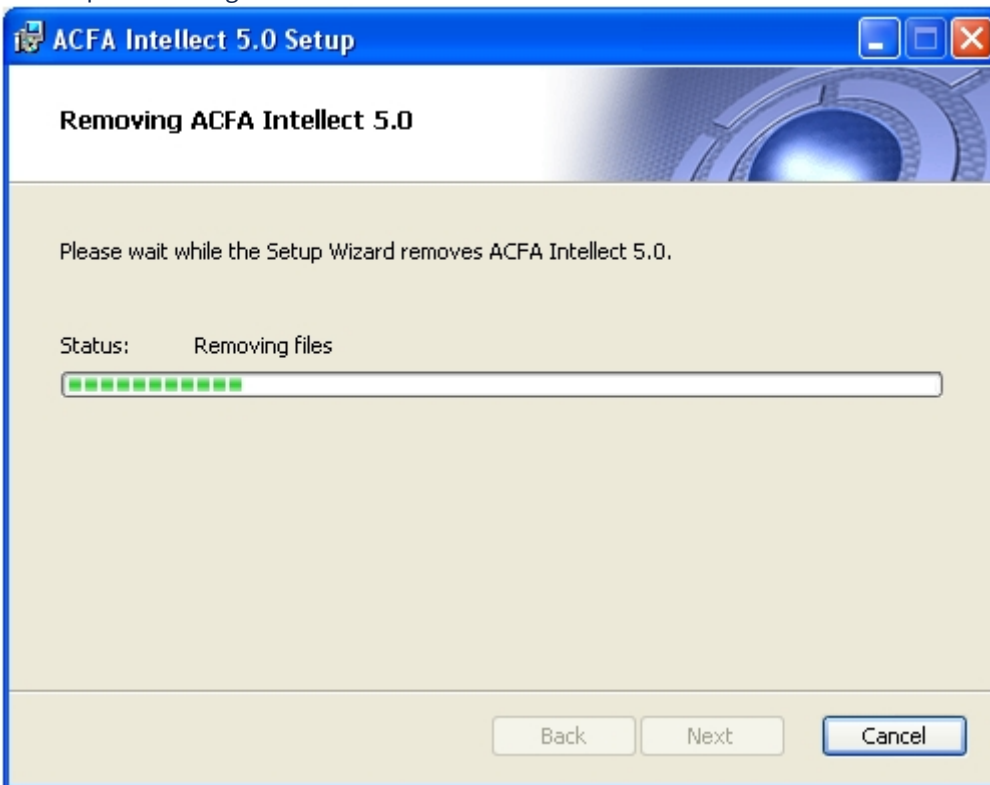
3. Select the **Remove** operation type and click **Next**.



4. Click **Remove** to start the removal process.



- As a result, the process of removing the installed components of the *ACFA Intellect* software package from the hard drive of the computer will begin..



- After all software components are successfully removed from hard drive, the message about the completion of the removing process will be displayed. Click **Finish**.



Removing of the *ACFA Intellect* is completed.

4.7 Installation of the ACFA Intellect software package in the silent mode

On the page:

- [Install](#)
- [Update](#)
- [Remove](#)

It is possible to run *ACFA Intellect* in the silent mode (without user interface).

This type of installation is performed by setting the parameters of the Product.msi installation file in the Windows command line.

⚠ Important!

This *ACFA Intellect* installation mode is available since version 6.4.3113.

4.7.1 Install

The command to install all modules (if the previous version of *ACFA Intellect* was fully removed.):

```
msiexec /i Product.msi /quiet INSTALLLEVEL=2
```

or

```
msiexec /i Product.msi /qn INSTALLLEVEL=2
```

⚠ Attention!

If *ACFA Intellect* was not removed, then these commands will update the components that are installed now.

By default menu icons and further *ACFA Intellect* installation are in English. To select Russian add the TRANSFORMS="Languages\Setup\ru\ru.mst" parameter in the command line, to select Spanish add the TRANSFORMS="Languages\Setup\es\es.mst" parameter. For instance:

```
msiexec /i Product.msi /quiet INSTALLLEVEL=2  
TRANSFORMS="Languages\Setup\ru\ru.mst"
```

To install only the required *ACFA Intellect* components use the request that looks like this:

```
msiexec /i Product.msi /quiet  
ADDLOCAL=  
"base,Interop.IIDK_COMLib,ravelin_ru,sdk_orion_ru,account_manager_ru,event_manager_ru,agency_pe  
rson_ru,photoidentification_ru,worktime_ru"  
TRANSFORMS="Languages\Setup\ru\ru.mst"
```

where all required components are listed in the ADDLOCAL parameter. The full list of available components is given in the table.

📘 Note

The module language is set with **ru**, **en** or **es** indication at the end of the component name.

Component	Module
base	Required component, service modules
Interop.IIDK_COMLib	<i>Component for ACFA Intellect server installation</i>
Security Fire Systems	
bacnetwrapper_ru, bacnetwrapper_en, bacnetwrapper_es	BACnet wrapper
dsc_ru, dsc_en	DSC
hunter_ru, hunter_en	HUNTER-PRO
nedap_retail_ru, nedap_retail_en	Nedap retail
opc_wrapper_ru, opc_wrapper_en	OPC Wrapper
optex_ru, optex_en	Optex
satel_ru, satel_en, satel_es	Satel
satel2_ru, satel2_en	Satel INTEGRA
cerberus_ru, cerberus_en	Siemens Cerberus ECO
snmpwrapper_ru, snmpwrapper_en	SNMP Wrapper
unipos5xxx_ru, unipos5xxx_en, unipos5xxx_es	UniPos 5100/5200
unipos_ru, unipos_en	UniPos 7002
zline_ru	Z-Line
vista_ru	Виста
vers_rs_ru	ВЭРС
detectomat_ru, detectomat_en	Detectomat
dozor_ru	Дозор 1А
dunai3_ru	Дунай
dunai2_ru	Дунай2
ncg9_ru, ncg9_en	Controller NCG-9
pl_ru, pl_en	Polon
chrysantemum_ru	ПРХК
raskat_ru	Раскат
rifstring_ru	Риф Стринг
rubezh_ru, rubezh_en	Rubezh FSA
rubezh_global_ru	Рубеж ГЛОБАЛ (Саратов)
rubicon_ru	Рубикон

start7_ru	СТАРТ-7
sintegral_ru	Стрелец-Интеграл
trombon_ru, trombon_en	Trombone SFA
umirs_ru	Юмирс
aritech_en	Aritech FP2000
fsg_en	FSG
telsap_en	Telsap 2100
Access Control Systems	
abc_ru, abc_en	AccessNet (ABC)
bsveins_ru	Biosmart UniPass
biosmart2_ru, biosmart2_en	BioSmart2
castle_ru, castle_en, castle_es	Castle
elsys_ru	Elsys
ravelin_ru, ravelin_en	Gate Parking
nc_ru, nc_en	Honeywell N-1000
impro_ru, impro_en	Impro
keywatcher_ru	KeyWatcher
nac_ru	NAC
octagram_ru	Octagram A1
pelco_ru, pelco_en, pelco_es	Pelco
perco_ru	Perco 12000
percos20_ru	PERCo-S-20
rusguard_ru	RusGuard
salto_ru, salto_en, salto_es	Salto
securiton_ru	Securiton
soyal_ru, soyal_en	Soyal
sphinx_ru, sphinx_en, sphinx_es	Sphinx
apda_ru	TempoReale
tss2_ru	TSS
kronverk_ru	Кронверк СМ-Т
nskat_ru	СКАТ
sintegral_web_ru	Стрелец-Интеграл. Web расширение

xabc_ru	Фортеця
evs_sk_ru	ЭВС
ansondb_en	AnsonDb
chomtech_en	Chomtech Access Control System
keyking_en	KeyKing
nitgen_en	Nitgen
paxton_net2_en, paxton_net2_es	Paxton NET2 ACS
suprema_en, suprema_es	Suprema
unicard_en	Unicard
velocity_en	Velocity
zk_en	ZK Teco
AC/FA Systems	
apl2_ru, apl2_en	Apollo SDK v.3
foxsec_ru, foxsec_en	FoxSec
hid_ru, hid_en, hid_es	HID Edge/VertX
galaxy_ru, galaxy_en, galaxy_es	Honeywell Galaxy Dimension
glx2_ru, glx2_en	Honeywell Galaxy Dimension v.2
paradox_ru, paradox_en	Paradox
pnet3_ru	ParsecNet 3
aiu3_ru	Rovalant 777 v.3
rovalant_a6_a16_ru	Rovalant A6-A16
orion_ru	Болид (SDK Орион v.1)
sdk_orion_ru	Болид (SDK Орион v.2)
rubeg8_isb_ru	Рубеж-08
rbg08_ru	Рубеж-08 v.2
winpak_en	WinPak
Perimeter Intrusion Detection Systems	
forteza_ru, forteza_en	Forteza
intrepid2_ru, intrepid2_en	Intrepid Grunt
intrepid3_ru, intrepid3_en	Intrepid II
arkan_ru	PREPONA-A
bagulnik2_ru	Багульник-М-УСО

ufdvolna_ru	Волна Альфа
pui32_ru	ПУИ-32
topol_ru	Тополь
xtralis2wayprotocol_en	ADPRO PRO
fft_en	FFT CAMS3
Control readers	
abc_cr_ru	ABC
castle_cr_ru	Castle
fs80cr_ru, fs80cr_en	FS-80
omnikey_ru, omnikey_en	HID Omnikey control reader
parsec_pr_x08_ru	Parsec
parsec_pr_p08_ru	Parsec PR-P08
perco_cr_ru	Perco
gate_cr_z2_ru	Z2
kodos_cr_ru	Кодос
ksu_cr_ru	КСУ
suprema_cr_en	Suprema BioMini control reader
Application software	
account_manager_ru, account_manager_en	Access Manager
virtual_acs_server_ru, virtual_acs_server_en	Virtual Access Server
event_manager_ru, event_manager_en, event_manager_es	Event Manager
dbimport2_ru, dbimport2_en	User Import
db_import_ru, db_import_en	Database Import/Export
an_ru, an_en	Security equipment
intellectnextbridge_ru, intellectnextbridge_en	Axxon Next data sender
support_temp_level_ru	Поддержка временных уровней доступа
agency_person_ru, agency_person_en, agency_person_es	Visitor Management System
worktime_ru, worktime_en, worktime_es	Time & Attendance
photoidentification_ru, photoidentification_en, photoidentification_es	Photo Identification
acfa_emulator_ru	Эмулятор ОПС/СКУД

4.7.2 Update

Important!

Only version 6.4.3113 (or later) can be updated.

Use this command in order to update all installed modules:

```
msiexec /quiet /i Product.msi  
TRANSFORMS="Languages\Setup\ru\ru.mst"
```

4.7.3 Remove

Use this command in order to remove all installed modules:

```
msiexec /x Product.msi
```

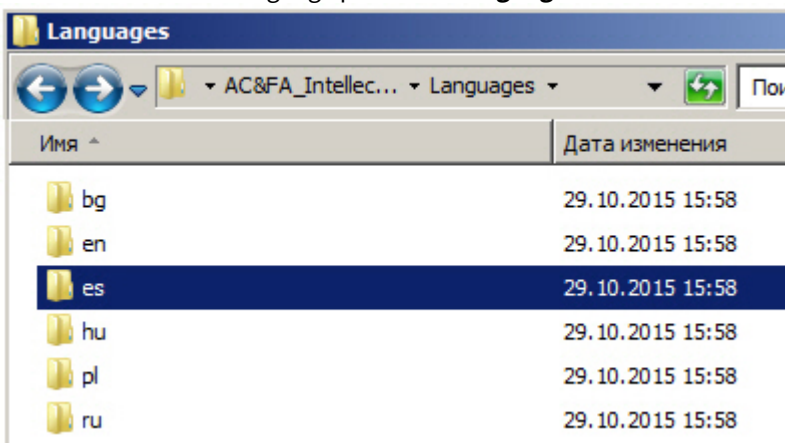
5 Change of the ACFA Intellect localization language

On default the language of installer and installation language of the *ACFA Intellect* software package are defined on the basis of language which was in use while base *Intellect* installation.

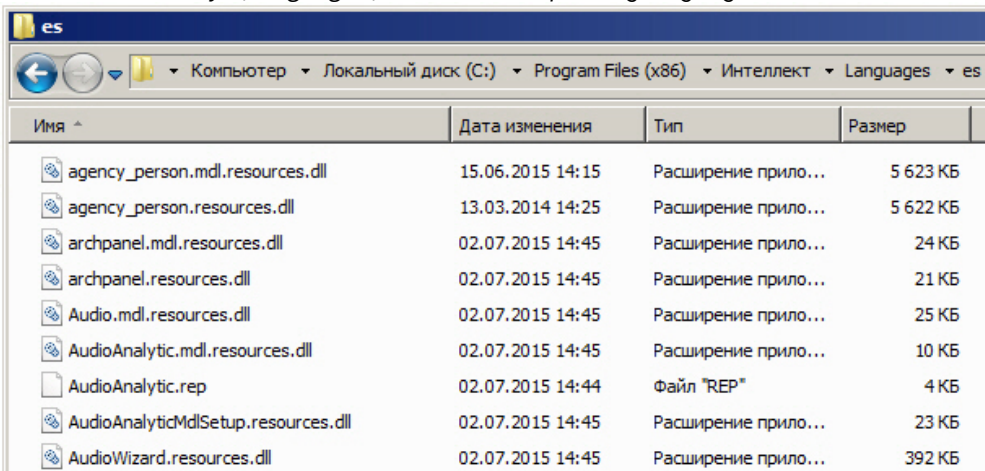
Procedure of changing the Intellect language is presented in the [Intellect Software System's interface language](#) section.

To change the *ACFA Intellect* language, do the following:

1. Download the [Language Pack for ACFA Module v.5.4](#) from the AxxonSoft web-site. The language pack contains localization files for the *ACFA Intellect* integration modules.
2. Extract files from the language pack. The **Language** folder contains subfolders corresponding to existed languages.



3. From the folder corresponding to the required language copy localization files for all integration modules to the *<Intellect installation directory>\Languages\<folder of corresponding language>*.



4. Update the database structure using the idb.exe utility (see the [Interface elements of the idb.exe window](#) section).

Change of the *ACFA Intellect* localization language is completed.

Example of changing the *ACFA Intellect* language from english to spanish is follows.

The *Intellect* and *ACFA Intellect* software packages were installed in english. Using the language pack from the AxxonSoft [web-site](#) language of the *Intellect* software package was changed into spanish (see the [Intellect Software System's interface language](#) section). To change the *ACFA Intellect* localization language into spanish, copy localization files from the *AC&FA_Intellect.v.5.4_lang\Languages\es* folder to the *<Intellect installation directory>\Languages\es* and update the database structure.