



ACFA PSIM Installation Guide

ACFA PSIM 1.0

Last update 08/10/2022

Table of Contents

1	ACFA PSIM Installation Guide. Introduction	3
2	Hardware and software requirements.....	4
3	General information about ACFA PSIM software package.....	5
3.1	Structure of the ACFA PSIM software package	5
3.2	Purpose of ACFA PSIM FSA, ACS and PIDS integration modules	5
3.3	Purpose of ACFA PSIM service modules.....	5
3.4	Operational architecture schemes available for some service modules	6
3.4.1	Server with a local client.....	6
3.4.2	Multi-server architecture	7
3.4.3	Server with a remote client	9
4	Installing, removing and updating of ACFA PSIM software package.....	11
4.1	General description of ACFA PSIM distribution kit	11
4.2	Installation of the ACFA PSIM software package.....	11
4.2.1	Installation of the Time and Attendance module	15
4.2.2	Installation of the ORC Wrapper integration module	16
4.2.3	Installation of the ApolloSDK v.4 integration module	16
4.3	Changing the ACFA PSIM software package	16
4.4	Repairing of the ACFA PSIM software package.....	20
4.5	Removing of the ACFA PSIM software package	23
4.6	Installation of the ACFA PSIM software package in the silent mode.....	26
4.6.1	Install	26
4.6.2	Remove.....	30
5	Change of the ACFA PSIM localization language	31

1 ACFA PSIM Installation Guide. Introduction

ACFA PSIM Installation Guide is a reference guide for installation and configuration specialists of the *ACFA PSIM* software package.

This Guide contains:

1. General information about *ACFA PSIM* software package.
2. Installing of *ACFA PSIM* software package.
3. Changing of *ACFA PSIM* software package.
4. Repairing of *ACFA PSIM* software package.
5. Updating of *ACFA PSIM* software package.
6. Removing of *ACFA PSIM* software package.

To get detailed information on how to configure and work with any *ACFA PSIM* integration module see the corresponding document of this integration module.

2 Hardware and software requirements

The hardware and software requirements for *ACFA PSIM* correspond to the similar requirements for *Axxon PSIM* (basic) (see [Requirements for base PCs](#)).

3 General information about ACFA PSIM software package

3.1 Structure of the ACFA PSIM software package

ACFA PSIM software package contains following subsystems:

1. Access Control System (ACS).
2. Fire and Security Alarm (FSA).
3. Perimeter Intrusion Detection Systems (PIDS).
4. Service modules.

Each subsystem includes integration modules of corresponding devices. Service modules are modules designed to facilitate operation of integration modules.

3.2 Purpose of ACFA PSIM FSA, ACS and PIDS integration modules

Each FSA/ACS/PIDS system is a combination of software and hardware. The hardware is represented by a third-party manufacturer FSA/ACS/PIDS system integrated into the *ACFA PSIM* software package. The software consists of the integration modules which allow configuring the interaction between the *ACFA PSIM* software and the hardware.

The FSA, ACS and PIDS integration modules perform the following functions:

1. configuring the interaction between the *ACFA PSIM* software and the FSA/ACS/PIDS hardware;
2. processing the information incoming from the security panels, alarm sensors and other notifiers (if FSA functions are integrated);
3. processing the information incoming from the readers, electromechanical locks and other tools of access control (if ACS functions are integrated);
4. processing the information incoming from perimetral security sensors and sensors mounted on the object entry (if the PIDS functions are integrated);
5. managing the alarm actuators and firefighting-related actuators, i.e. sound and light notifiers (if the FSA functions are integrated);
6. managing the actuators – security lighting tools, tools of entry control, i.e. turnstiles, turnpikes, etc. (if the PIDS functions are integrated);
7. managing the access-related actuators – devices for locking and unlocking gates (if the FSA functions are integrated).

3.3 Purpose of ACFA PSIM service modules

ACFA PSIM service modules are designed to facilitate operation of integration modules. The following modules are included:

1. *Axxon One data sender.*
2. *Access Manager.*
3. *Virtual Access Server.*
4. *Event Manager.*
5. *Database Import/Export.*
6. *User Import.*
7. *Temporary Access Levels.*
8. *Time & Attendance.*

The detailed information about each module is presented in the corresponding documentation sections.

Note.

Legacy modules such as *Photo Identification* (replaced by *Event Manager*), *Visitor Management System* (replaced by *Access Manager*) and *Data Import/Export* (replaced by *User Import*) are also included into *ACFA PSIM* installation kit in order to ensure compatibility between software versions. It is strongly not recommended to use legacy modules.

3.4 Operational architecture schemes available for some service modules

Note

The operational architecture schemes are available only for the following *ACFA PSIM* service modules:

- Time and Attendance;
- Event Manager;
- Access Manager.

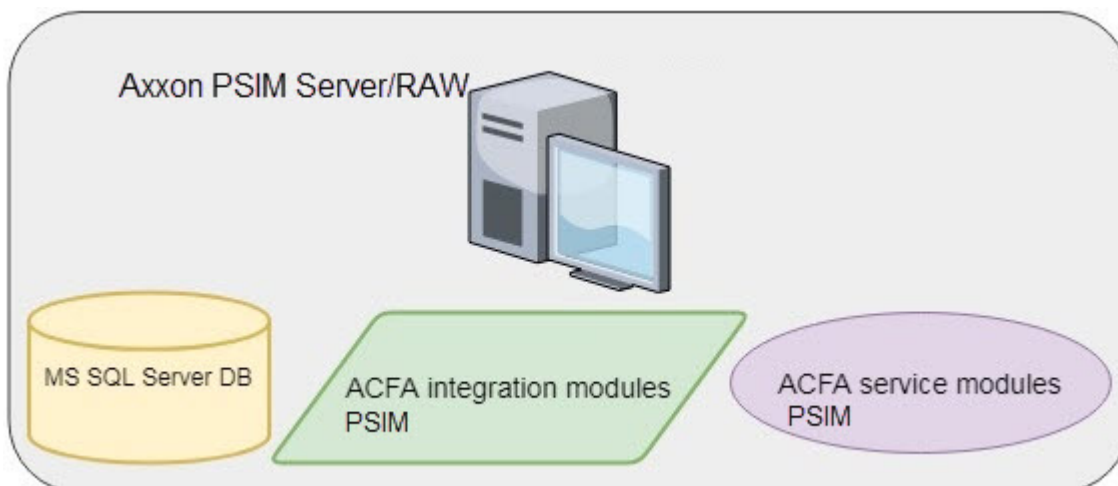
Three basic architectural schemes can be used:

1. Server with a local client – a single Server/RAW with the *ACFA PSIM* integration modules and service modules installed on it.
2. Multi-server architecture – several Servers/RAWs with the *ACFA PSIM* integration modules and service modules installed on each of them. In this case, service modules can be used on any of the Servers/RAWs.
3. Server with a remote client – one or more Servers/RAWs and Remote Clients. In this case, service modules are usually used on the Remote Client, and their primary configuration is performed on the Server/RAW.

3.4.1 Server with a local client

The ‘Server with a local client’ architectural scheme is a single Server/RAW with the *ACFA PSIM* integration modules and service modules installed on it. The data source is the MS SQL Server database. This architectural scheme is the easiest to set up, because service modules are created and configured only on one Server/RAW.

The model of the architectural scheme is presented below.

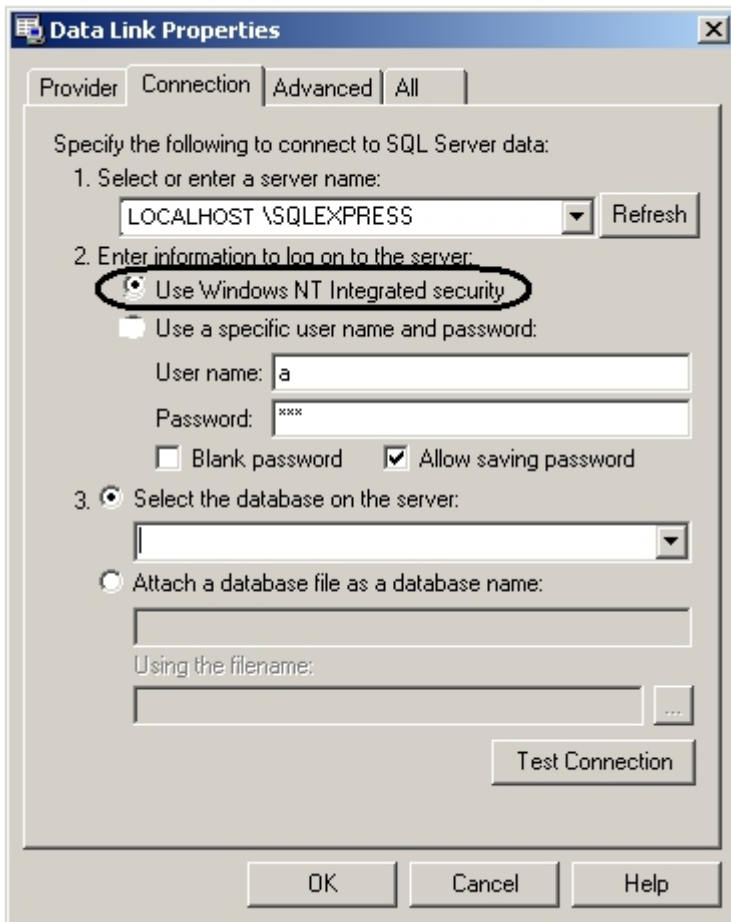


Note

This operational architecture scheme is available only for the following *ACFA PSIM* service modules:

- Time and Attendance;
- Event Manager;
- Access Manager.

If the ‘Server with a local client’ architectural scheme is used, then it is not necessary to specify a username and password when setting up a data source — the **Use Windows NT Integrated security** can be selected to log in to the Server.



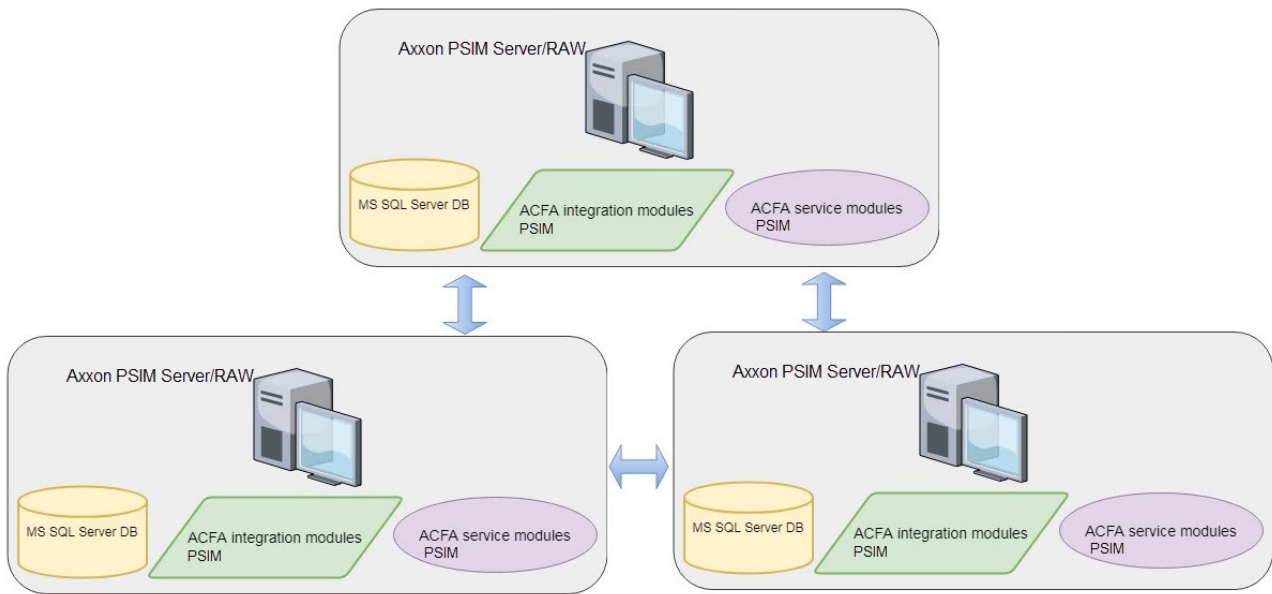
3.4.2 Multi-server architecture

The ‘*Multi-server architecture*’ scheme includes several Servers/RAWs with the *ACFA PSIM* integration modules and service modules installed on each of them. In this case, service modules can be used on any of the Servers/RAWs.

The scheme includes the following necessary components:

1. A Server with the *ACFA PSIM* integration modules and service modules installed on it.
2. RAWs with the *ACFA PSIM* integration modules and service modules installed on each of them.
3. The MS SQL Server database.

The model of the architectural scheme is presented below.

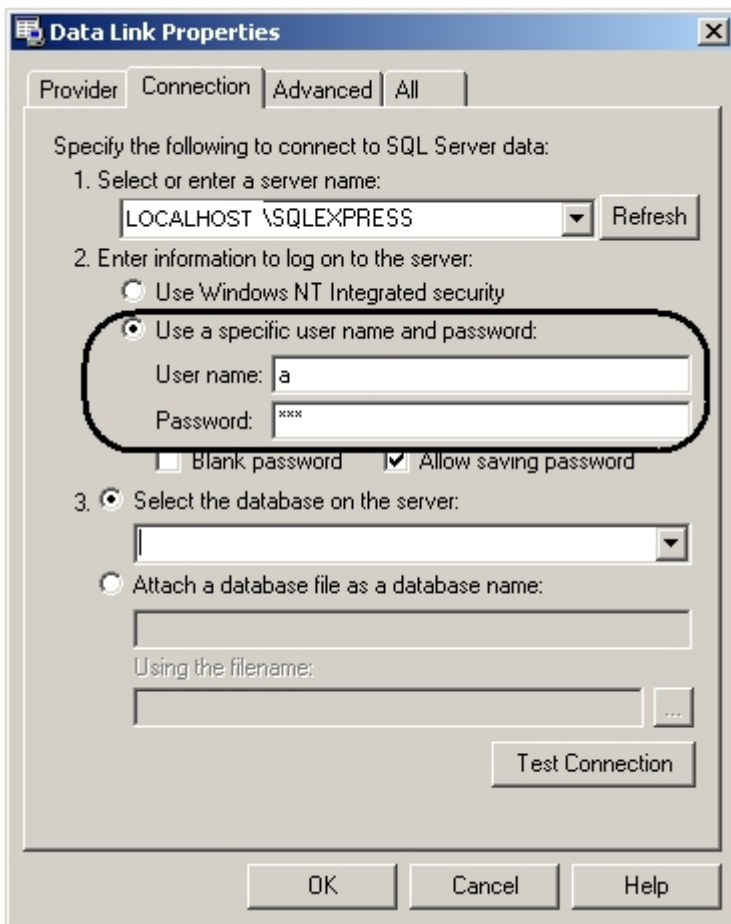


Note

This operational architecture scheme is available only for the following *ACFA PSIM* service modules:

- Time and Attendance;
- Event Manager;
- Access Manager.

When configuring the *Axxon PSIM* Server, it is necessary to specify a username and password to configure the database server login.



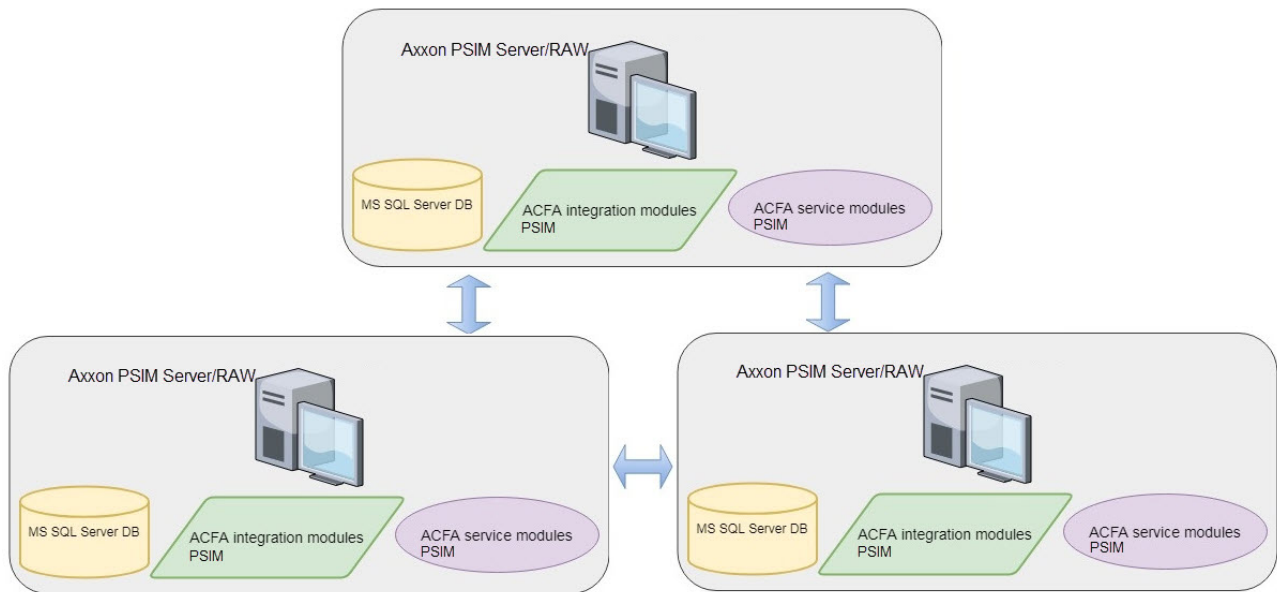
3.4.3 Server with a remote client

The ‘*Server with a remote client*’ architectural scheme includes one or more Servers/RAWs and Remote Clients. In this case, service modules are usually used on the Remote Client, and their primary configuration is performed on the Server/RAW.

The scheme includes the following necessary components:

1. A Server with the *ACFA PSIM* integration modules and service modules installed on it.
2. RAWs and Remote Clients with the *ACFA PSIM* integration modules and service modules installed on each of them.
3. The MS SQL Server database.

The model of the architectural scheme is presented below.



Note

This operational architecture schemes is available only for the following ACFA PSIM service modules:

- Time and Attendance;
- Event Manager;
- Access Manager.

When configuring the *Axxon PSIM* Server, it is necessary to specify a username and password to configure the database server login in the same way as for the 'Multi-server architecture' scheme (see [Multi-server architecture](#)).

4 Installing, removing and updating of ACFA PSIM software package

4.1 General description of ACFA PSIM distribution kit

ACFA PSIM is supplied as a software installation package (distribution kit). The current version of the distribution kit can be downloaded from the official [AxxonSoft](#) website.

The distribution kit contains all the necessary software components for installing the *ACFA PSIM* software package on a base computer.

The distribution kit allows you to install, restore and remove the *ACFA PSIM* software package.

Attention!

- Prior to installing, restoring or removing the *ACFA PSIM* software package, the *Axxon PSIM* operation should be shut down.
- Administrator rights are required for installing, restoring or removing *ACFA PSIM*.

4.2 Installation of the ACFA PSIM software package

The *ACFA PSIM* software is installed as a part of the *Axxon PSIM* software.

Important!

The *ACFA PSIM* software should be installed on both **Server/Remote administrator workplace (RAW)** and **Client** (for details, see [Axxon PSIM software. Administrator's Guide](#)).

In a distributed security system, both integration and service modules of *ACFA PSIM* should be installed on all computers where they will be used and configured (Server, RAW, Client). *ACFA PSIM* versions must be the same on all computers within the distributed system. For more details on how to install and configure base *Axxon PSIM* software for distributed architecture, refer to [Axxon PSIM software. Administrator's Guide](#).

Note

When installed on Server or RAW, *ACFA PSIM* provides functions for configuration, control and monitoring. On Client the modules are required for control and monitoring.

Note.

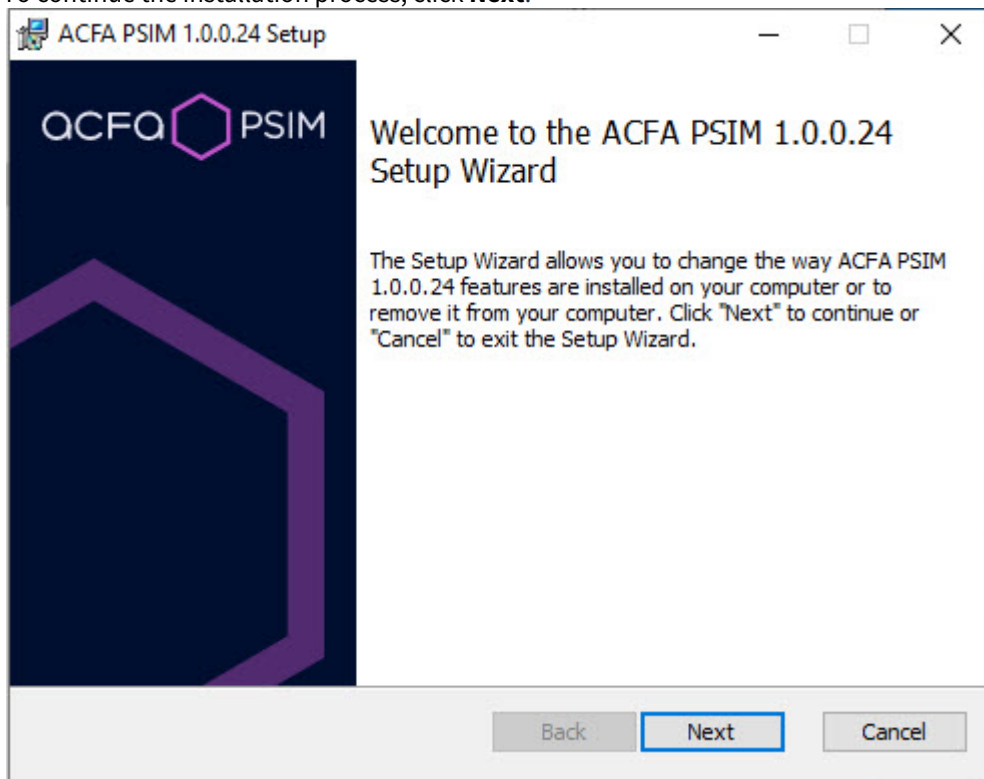
Installer language and *ACFA PSIM* installation language are defined by the language selected for the base *Axxon PSIM* installation. Change of localization language with the help of language packs after base *Axxon PSIM* installation will not influence the language of *ACFA PSIM* installation.

Language of the *ACFA PSIM* localization can be changed using the language packs (see [Change of the ACFA PSIM localization language](#)).

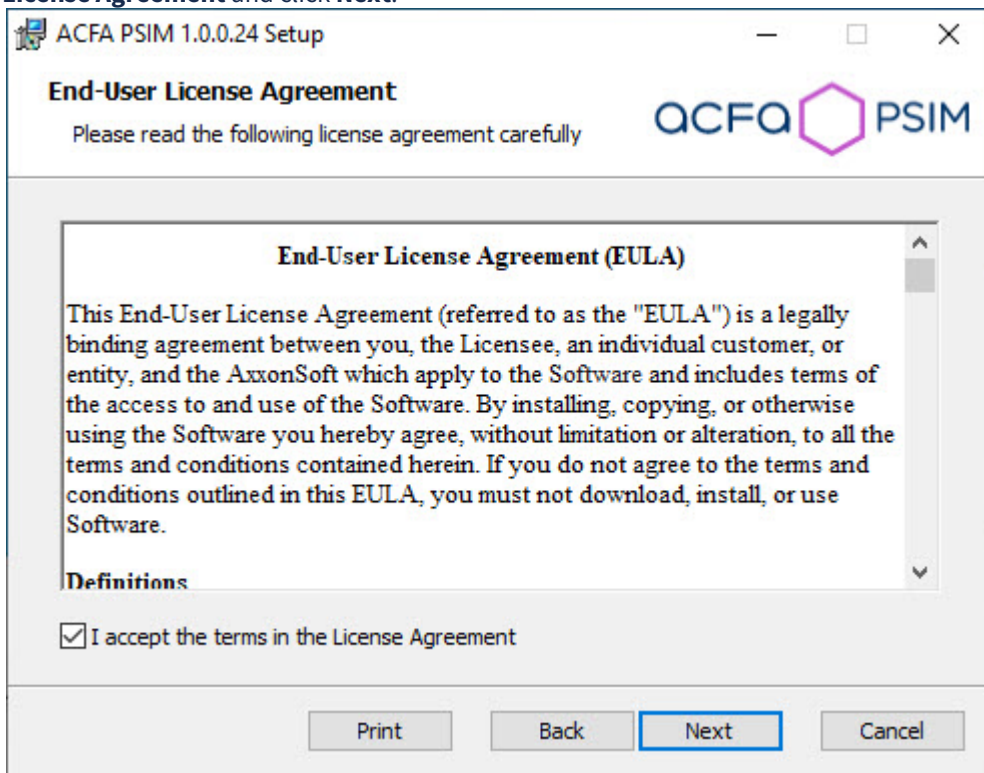
To install *ACFA PSIM*, do the following:

1. In the root directory of the distribution package, run the setup.exe executable file.

- To continue the installation process, click **Next**.



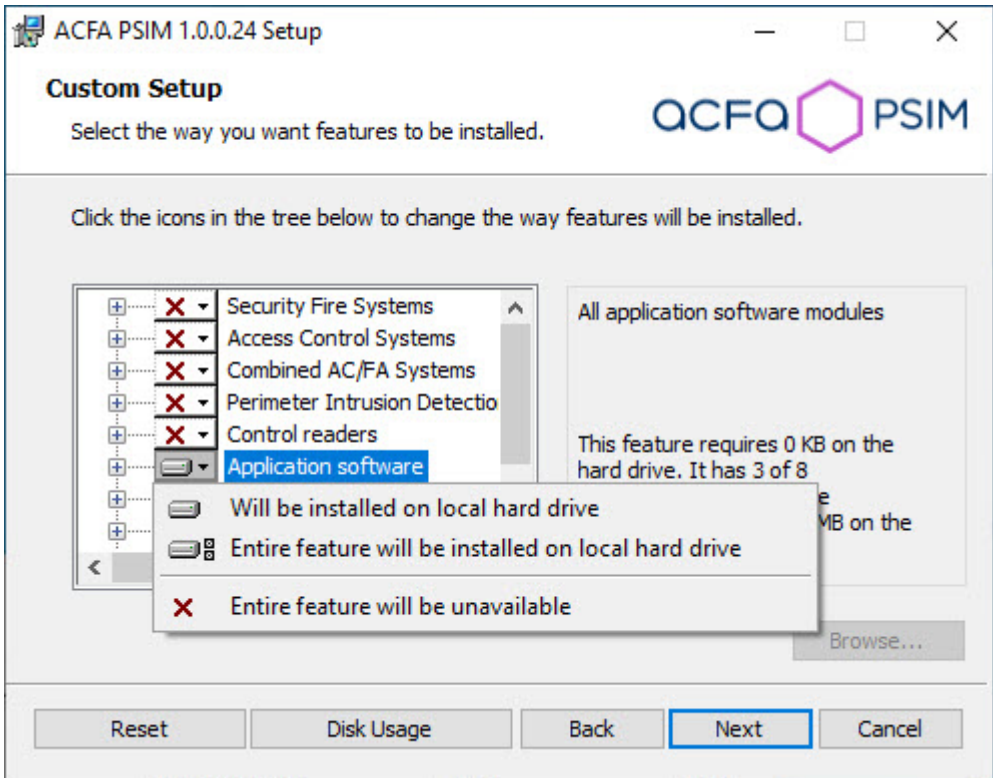
- Read the terms of the license agreement carefully. Then set the radio button to **I accept the terms of the License Agreement** and click **Next**.



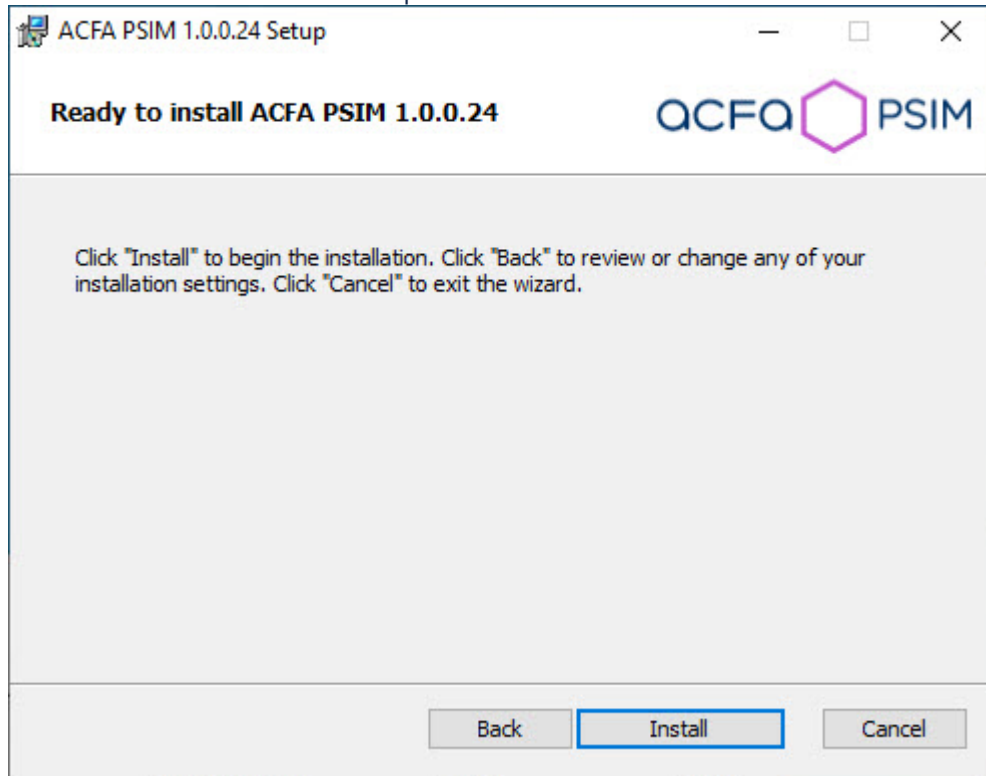
- In the **Custom Setup** dialog window, select modules which are to be installed. To install module or *ACFA PSIM* subsystem select the **Entire feature will be installed on local hard drive** item. To accept all changes and continue installation process, click the **Next** button.

Note

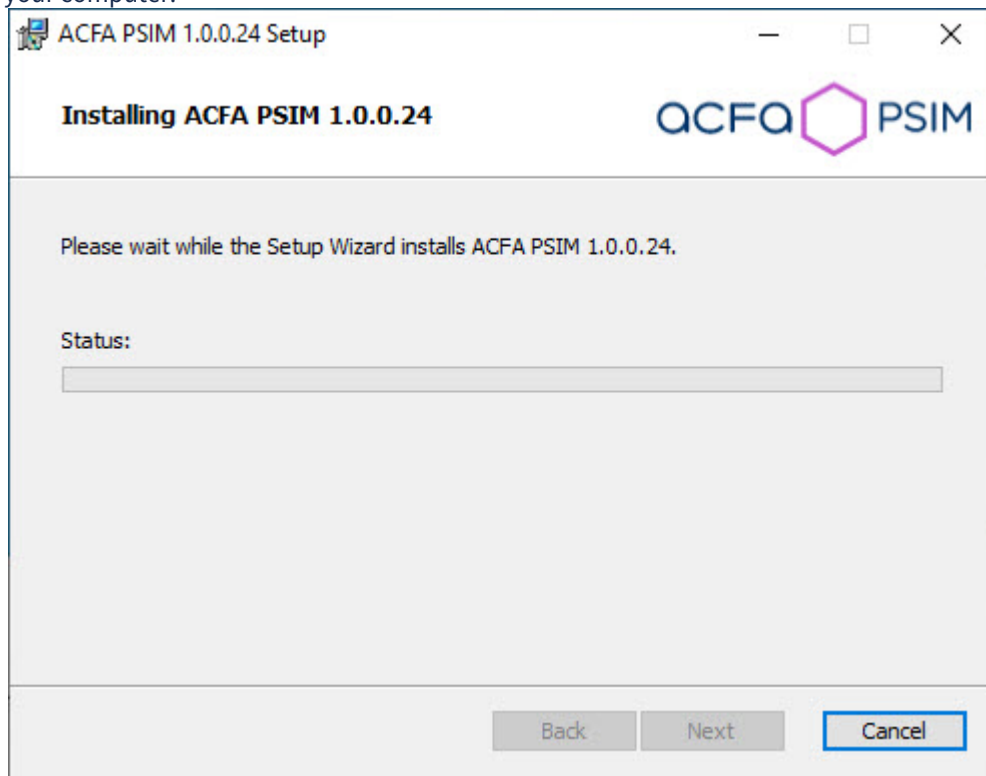
When you select a component in the list, the area on the right displays information about this component and the amount of disk space required to install it.



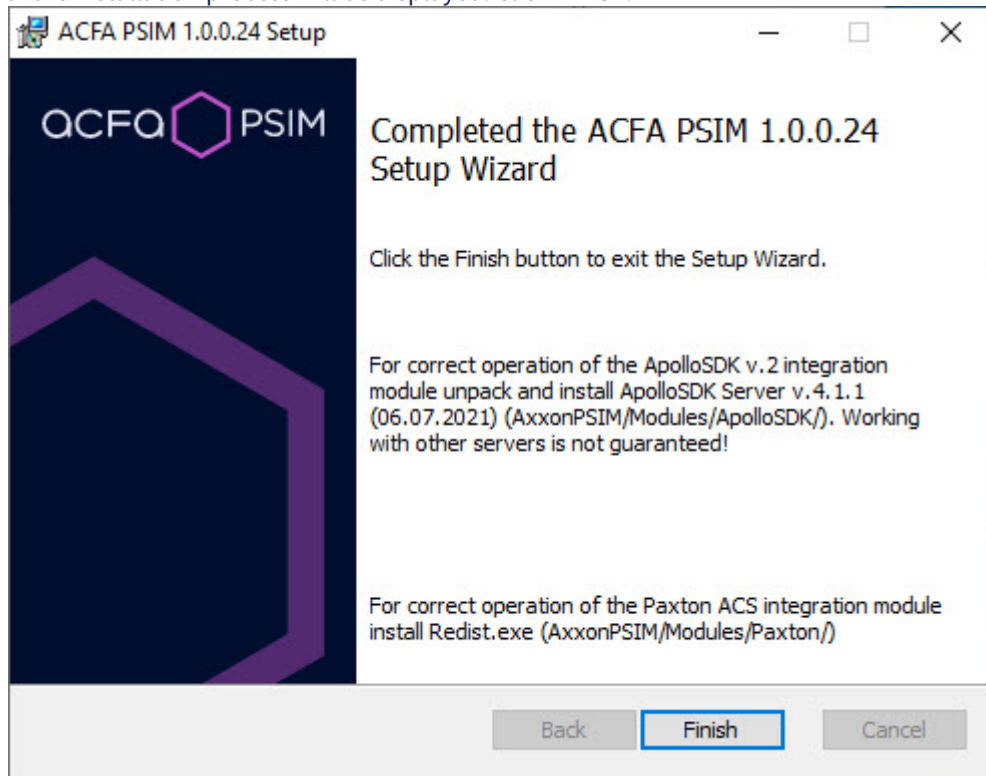
5. Click **Install** to start the installation process.



6. As a result, the necessary components of the *ACFA PSIM* software package will be copied to hard drive of your computer.



7. After all software components are successfully copied on your hard drive, the message about the completion of the installation process will be displayed. Click **Finish**.



The *ACFA PSIM* software package installation is finished.

Note.

After the *ACFA PSIM* is installed it is recommended to update the DB structure using the `idb.exe` utility located in the *Axxon PSIM* software directory. Database updating is performed by clicking the **Update database** button in the utility window.

After *ACFA PSIM* software package is installed, some modules may require additional actions or installation of additional software. A description of the installation features for such modules is given in the subsections below.

Attention!

To use the integration modules that are included in the **Security Equipment** component, it is necessary to install the following software:

- the *Drivers Pack* driver package (download the distribution package here: [Drivers Pack](#));
- the Internet Explorer browser version 11 or higher.

4.2.1 Installation of the Time and Attendance module

The *Time and Attendance* module is a part of the *ACFA PSIM* software. For the correct module operation, after the *ACFA PSIM* installation, it is necessary to update the database using the `updateDB.exe` utility (for details, see [Time and Attendance Module Settings and Operation Guide](#)).

4.2.2 Installation of the ORC Wrapper integration module

The *ORC Wrapper* integration module is a part of the *ACFA PSIM* software. For the correct module operation, after the *ACFA PSIM* installation, do the following:

1. Go to the *Axxon PSIM* software installation directory\Modules\ORCServer.
2. Start the setup.exe executive file and install the required components.

The *ORC Wrapper* integration module is installed.

4.2.3 Installation of the ApolloSDK v.4 integration module

Installation of the *ApolloSDK v.4* integration module is performed after completion the installation of the *ACFA PSIM* software package. To install the *ApolloSDK v.4* integration module, do the following:

1. Unpack the **ApolloSDK v.4.1.1 (06.07.2021) Installer** archive which is located in the *Axxon PSIM* software installation directory\Modules\ApolloSDK.
2. Run the **ApolloSDK v.4.1.1 (06.07.2021) Installer\ApolloSDKSetup.exe** executive file to install the *Apollo* server version 4.1.

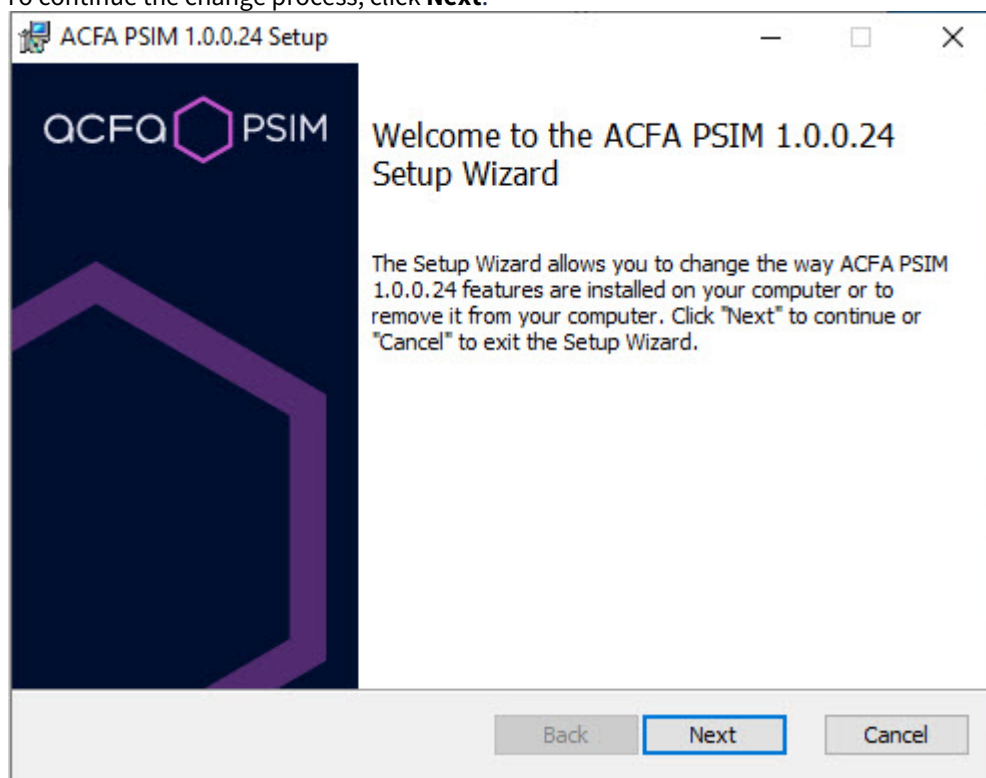
Attention!

Functioning of the *ApolloSDK v.4* with other servers is not guaranteed.

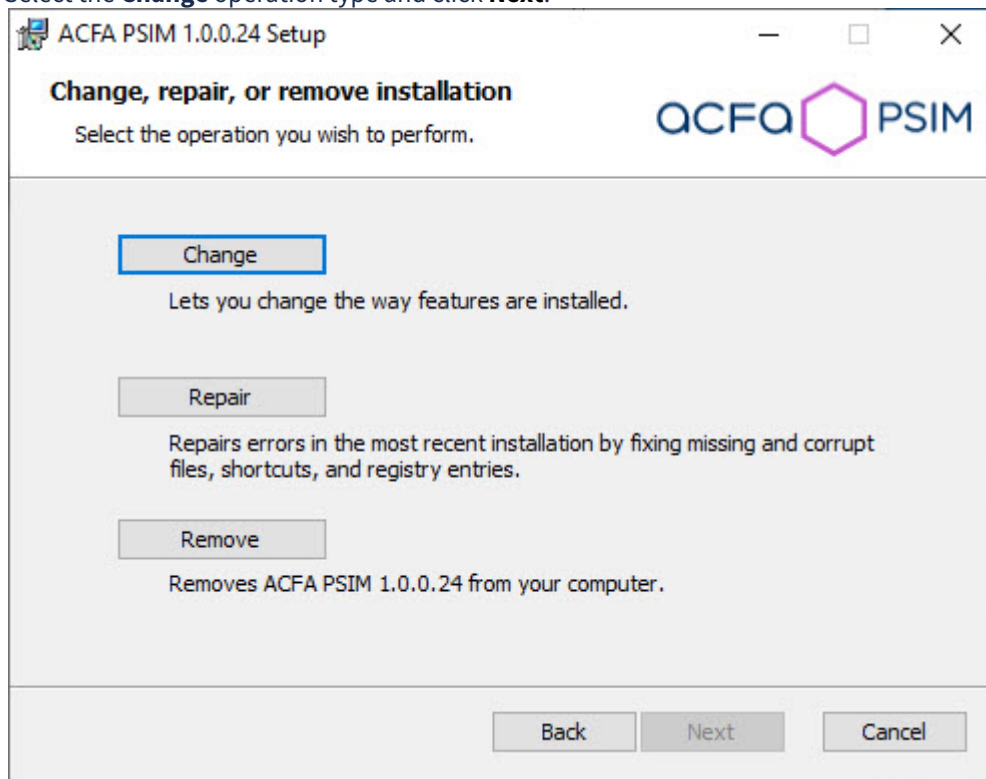
4.3 Changing the ACFA PSIM software package

To add or remove some *ACFA PSIM* components, do the following:

1. In the root directory of the distribution package, run the setup.exe executable file
2. To continue the change process, click **Next**.



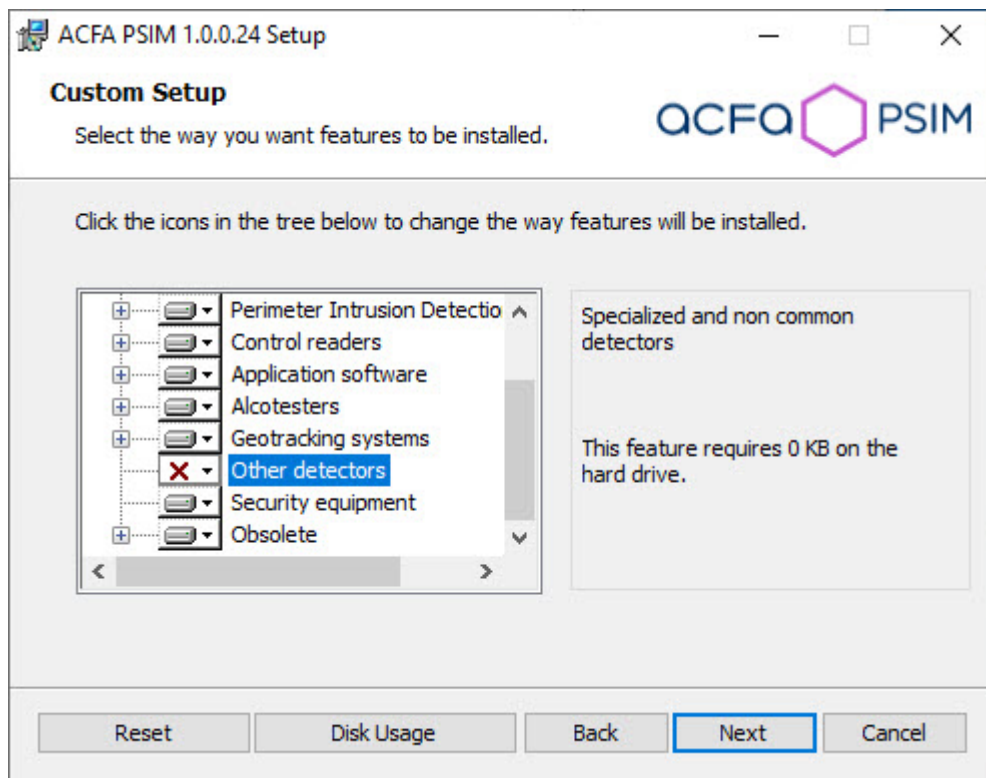
3. Select the **Change** operation type and click **Next**.



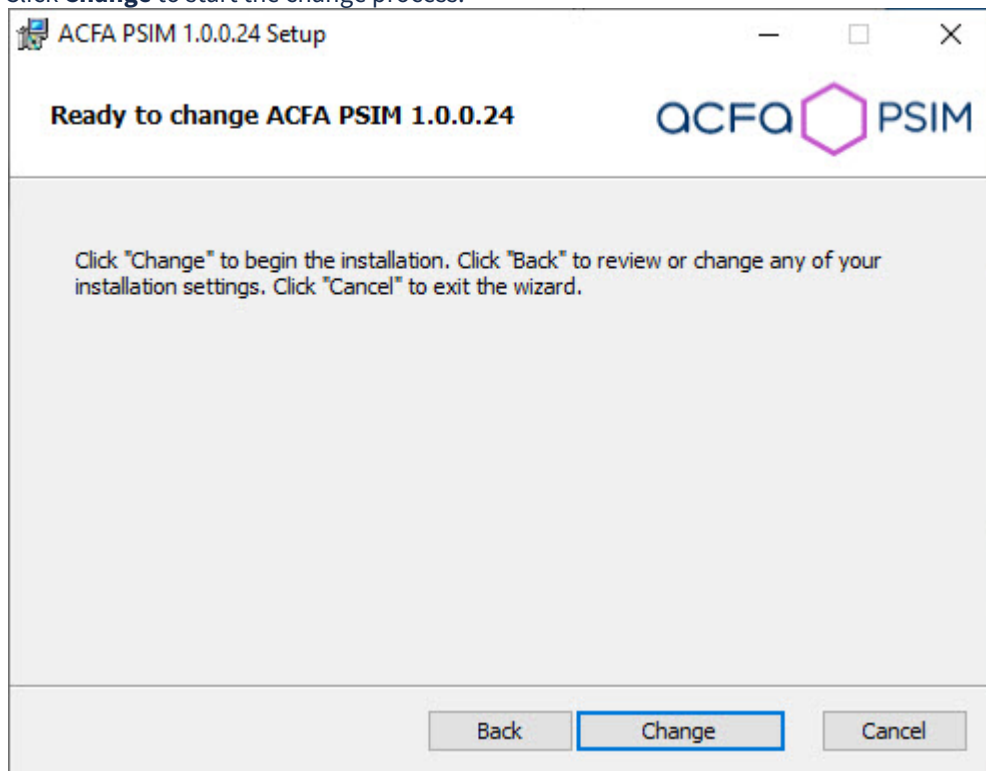
4. In the opened **Custom Setup** window, select components which are to be installed or removed. To install module or *ACFA PSIM* subsystem, select the **Entire feature will be installed on local hard drive** item. To remove component, select the **Entire feature will be unavailable** item. When all required components are selected, click the **Next** button.

Note

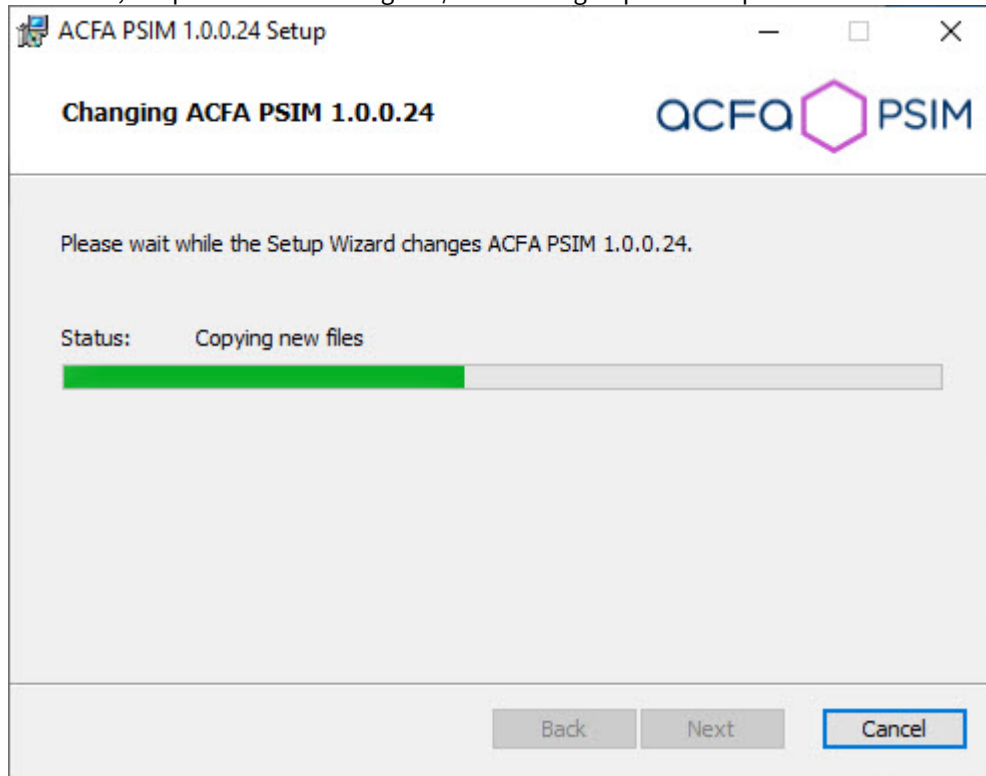
When you select a component in the list, the area on the right displays information about this component and the amount of disk space required to install it.



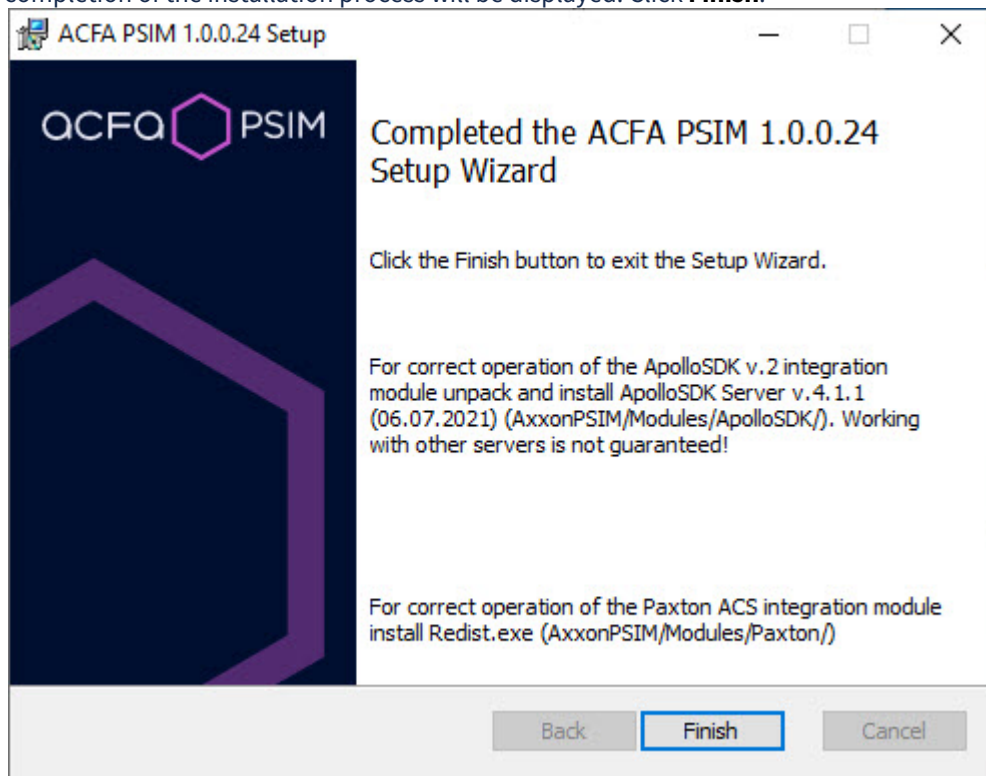
5. Click **Change** to start the change process.



6. As a result, the process of installing and/or removing required components of *ACFA PSIM* will start.



7. After all software components are successfully copied/removed on your hard drive, the message about the completion of the installation process will be displayed. Click **Finish**.

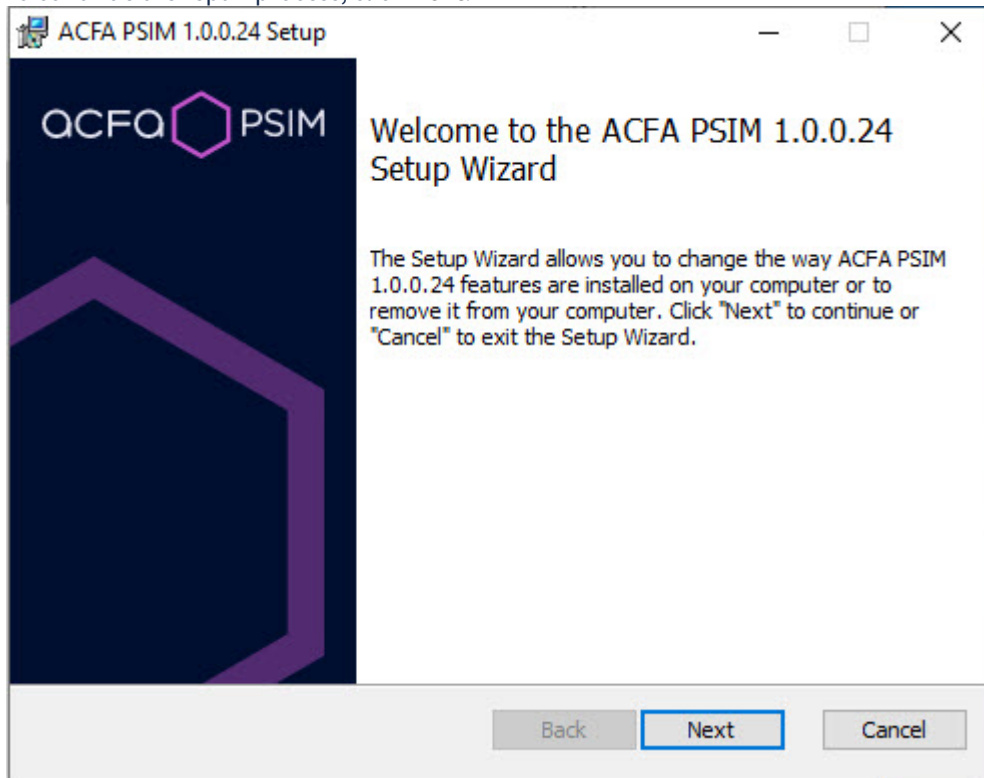


Change of *ACFA PSIM* software package is completed.

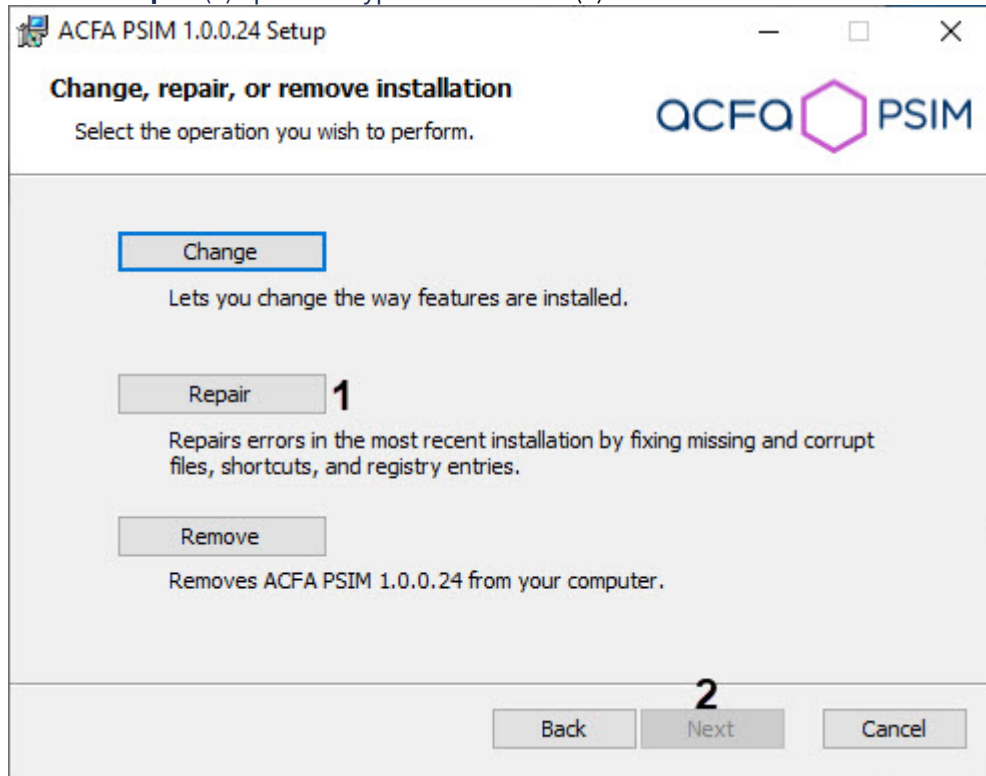
4.4 Repairing of the ACFA PSIM software package

To correct mistakes occurred after the *ACFA PSIM* installation by repair failing files, tags and registry entries, do the following:

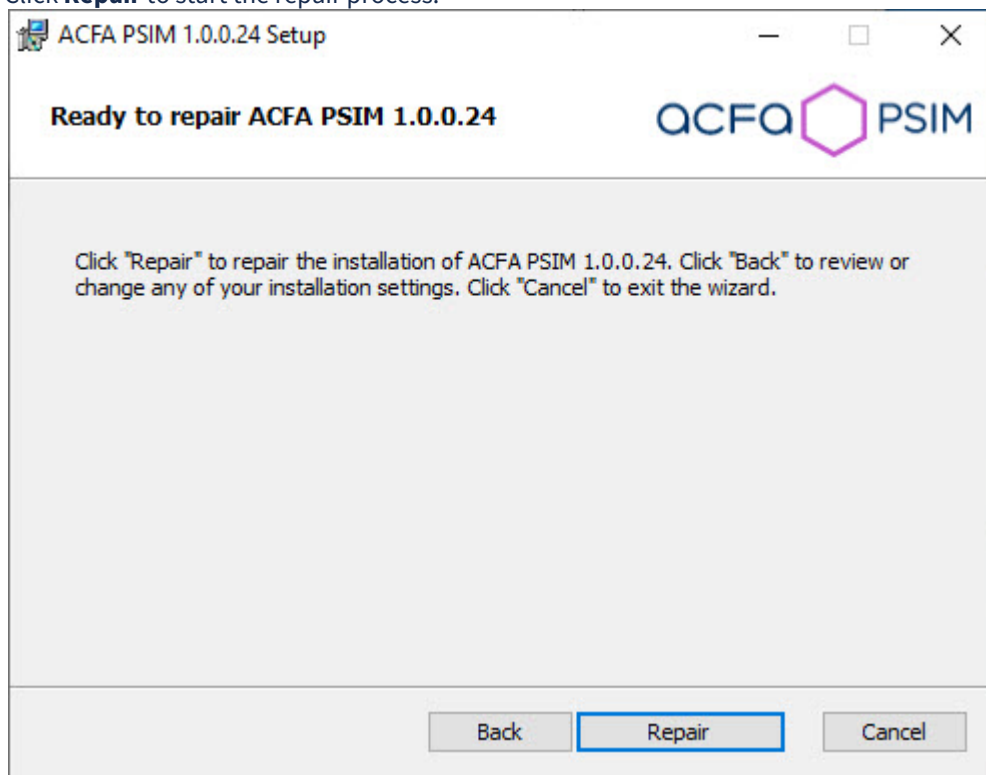
1. In the root directory of the distribution kit, run the setup.exe file.
2. To continue the repair process, click **Next**.



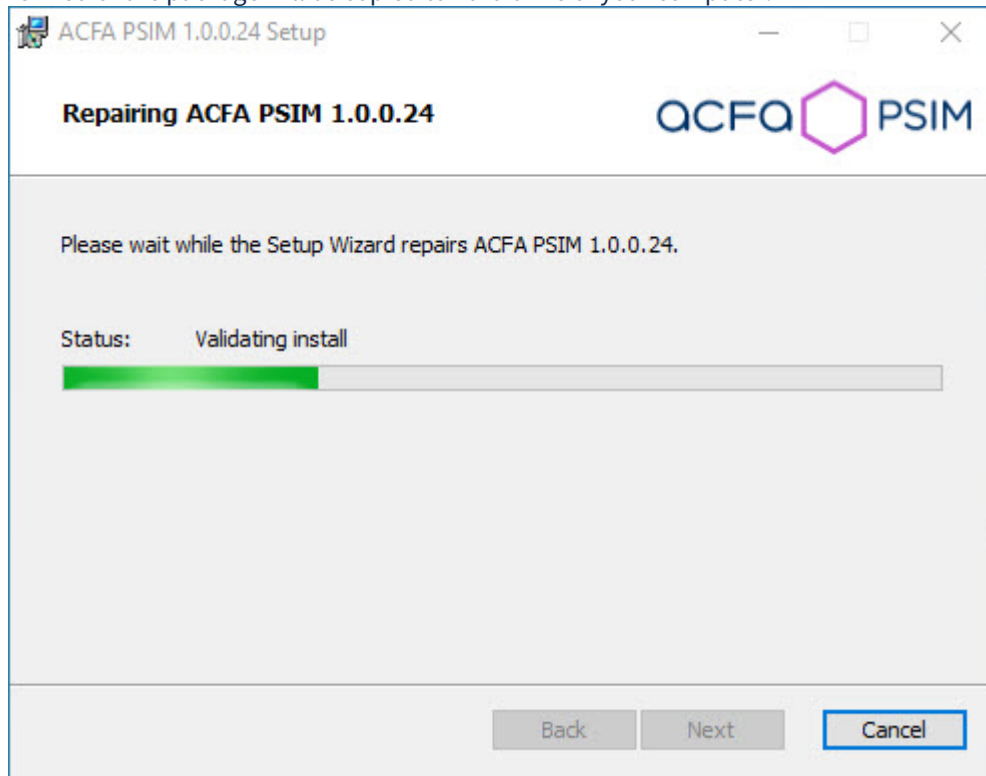
3. Select the **Repair (1)** operation type and click **Next (2)**.



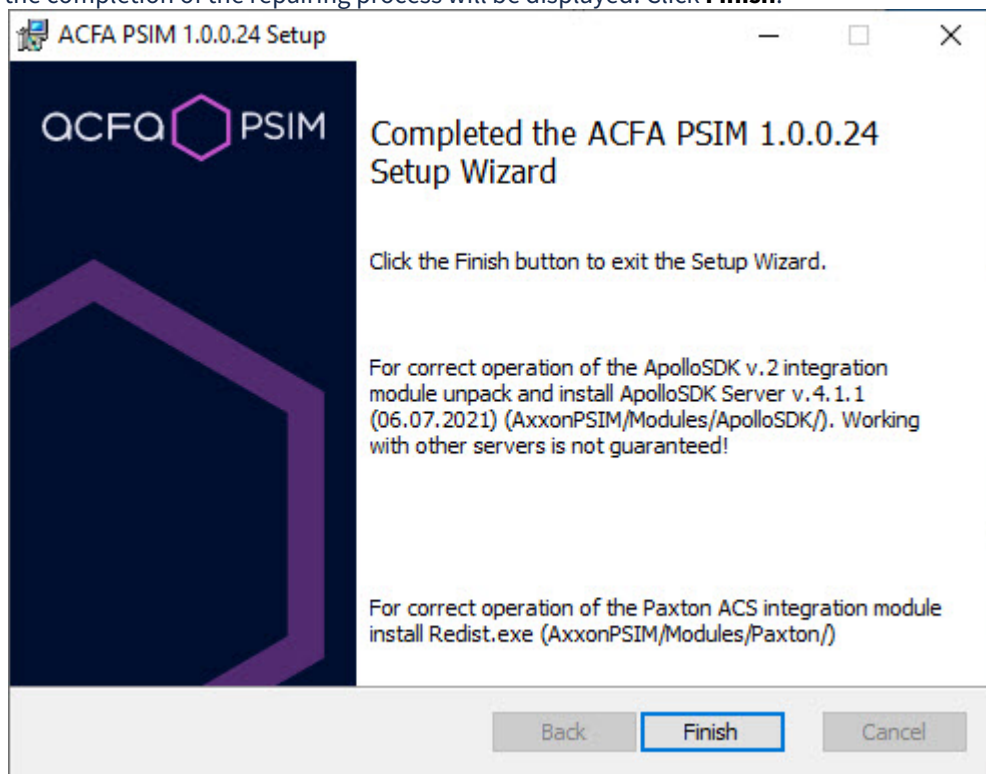
4. Click **Repair** to start the repair process.



- As a result, the installed components will be checked and the necessary components of the ACFA PSIM software package will be copied to hard drive of your computer.



- After all software components are successfully copied on your hard drive, the message about the completion of the repairing process will be displayed. Click **Finish**.

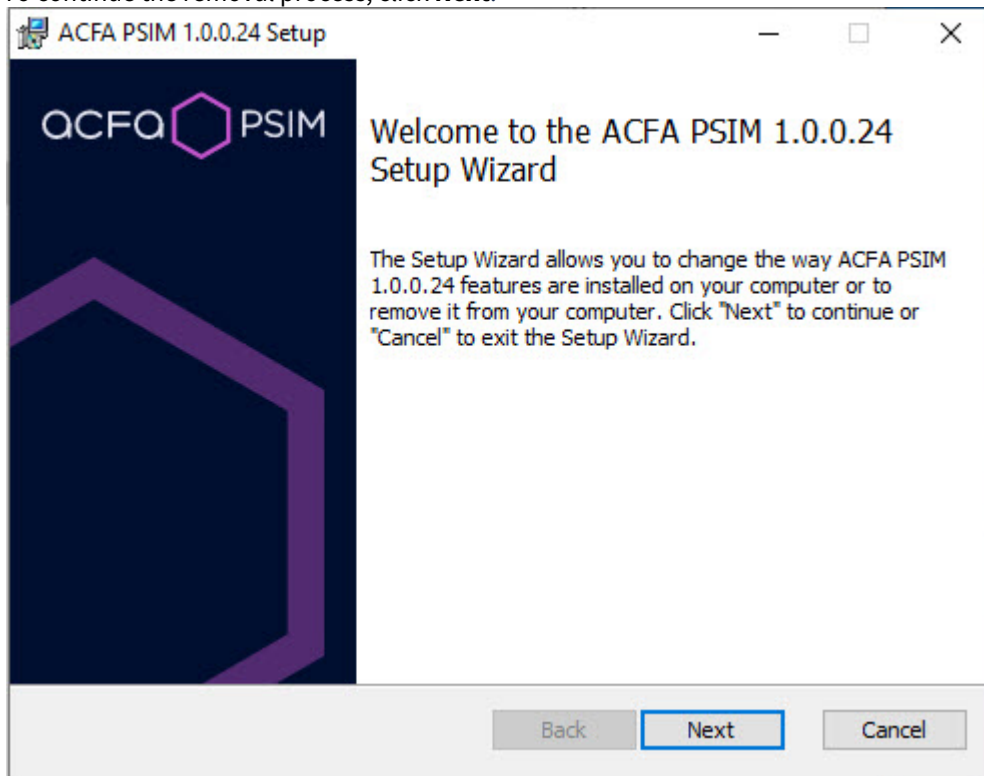


Repairing of the *ACFA PSIM* software package is completed.

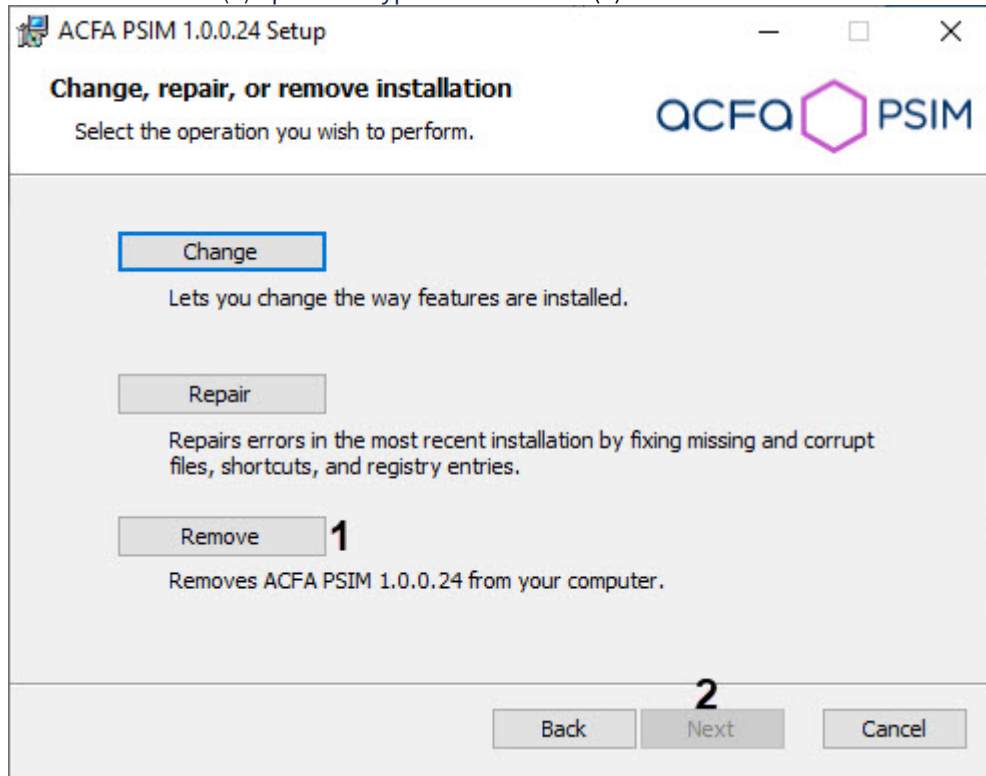
4.5 Removing of the ACFA PSIM software package

To remove *ACFA PSIM* software package, do the following:

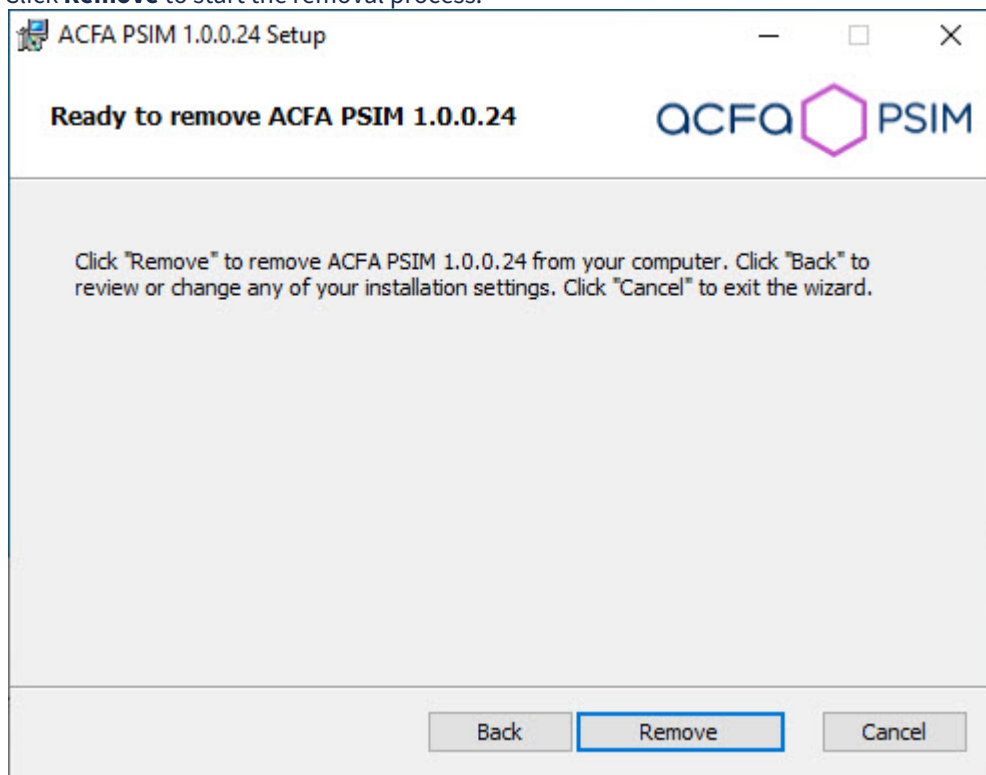
1. In the root directory of the distribution package, run the setup.exe executable file
2. To continue the removal process, click **Next**.



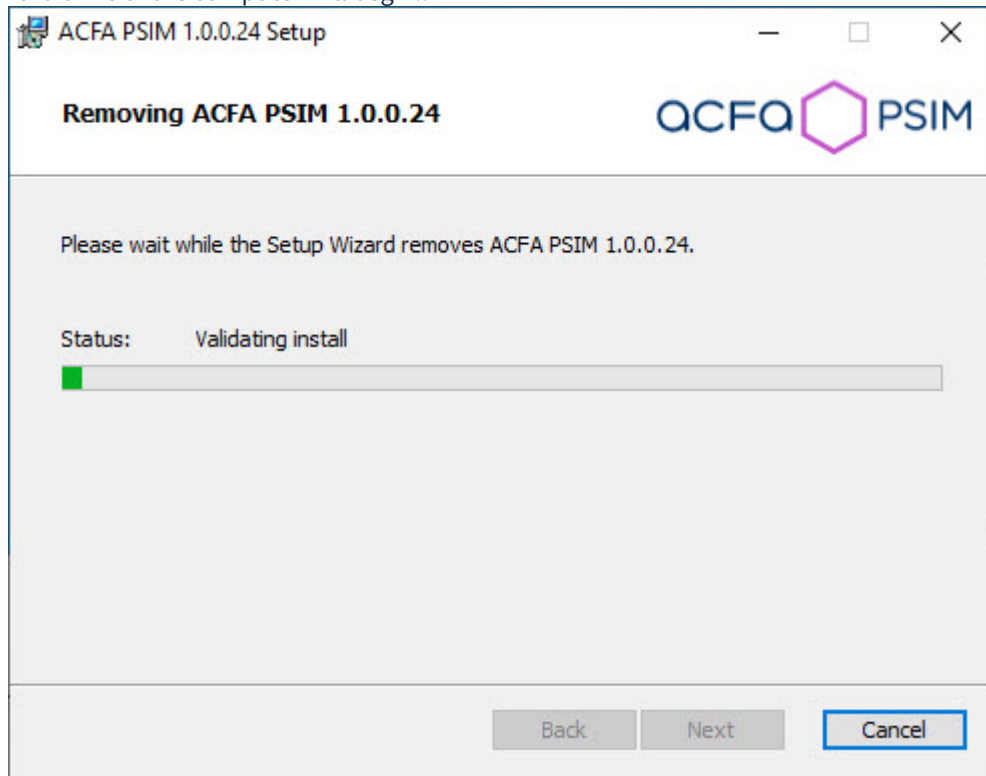
3. Select the **Remove (1)** operation type and click **Next (2)**.



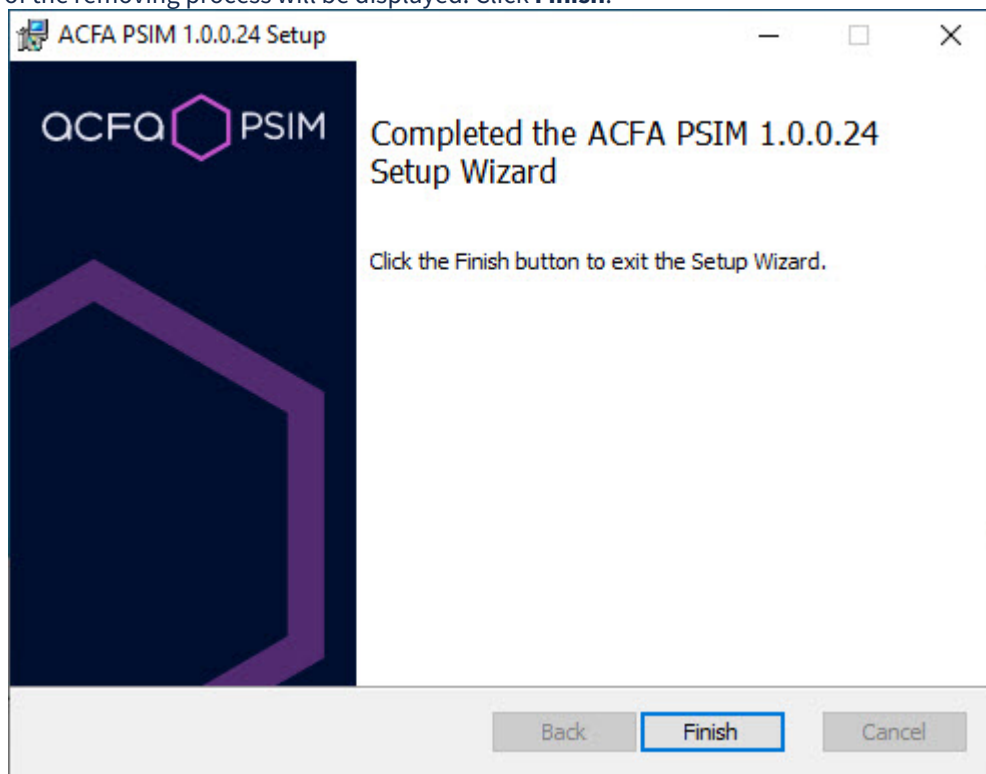
4. Click **Remove** to start the removal process.



5. As a result, the process of removing the installed components of the *ACFA PSIM* software package from the hard drive of the computer will begin..



6. After all software components are successfully removed from hard drive, the message about the completion of the removing process will be displayed. Click **Finish**.



Removing of the *ACFA PSIM* is completed.

4.6 Installation of the ACFA PSIM software package in the silent mode

On the page:

- [Install](#)
- [Remove](#)

It is possible to run *ACFA PSIM* in the silent mode (without user interface).

This type of installation is performed by setting the parameters of the Product.msi installation file in the Windows command line.

4.6.1 Install

The command to install all modules:

```
msiexec /i Product.msi /quiet INSTALLLEVEL=2
```

or

```
msiexec /i Product.msi /qn INSTALLLEVEL=2
```

By default menu icons and further *ACFA PSIM* installation are in English. To select Spanish add the TRANSFORMS="Languages\Setup\es\es.mst" parameter. For instance:

```
msiexec /i Product.msi /quiet INSTALLLEVEL=2
TRANSFORMS="Languages\Setup\es\es.mst"
```

To install only the required *ACFA PSIM* components use the request that looks like this:

```
msiexec /i Product.msi /quiet
ADDLOCAL=
"base,Interop.IIDK_COMLib,ravelin_en,account_manager_en,event_manager_en,agency_person_en,photoidentification_en,worktime_en"
TRANSFORMS="Languages\Setup\en\en.mst"
```

where all required components are listed in the ADDLOCAL parameter. The full list of available components is given in the table.

Note

The module language is set with **en** or **es** indication at the end of the component name.

Component	Module
-----------	--------

base	Required component, service modules
Interop.IIDK_COMLib	Component for <i>ACFA PSIM server installation</i>
Security Fire Systems	
bacnetwrapper_en, bacnetwrapper_es	BACnet wrapper
dsc_en	DSC
hunter_en	HUNTER-PRO
nedap_retail_en	Nedap retail
opc_wrapper_en	OPC Wrapper
optex_en	Optex
satel_en, satel_es	Satel
satel2_en	Satel INTEGRA
cerberus_en	Siemens Cerberus ECO
snmpwrapper_en	SNMP Wrapper
unipos5xxx_en, unipos5xxx_es	UniPos 5100/5200
unipos_en	UniPos 7002
detectomat_en	Detectomat
ncg9_en	Controller NCG-9
pl_en	Polon
rubezh_en	Rubezh FSA
trombon_en	Trombone SFA
aritech_en	Aritech FP2000
fsg_en	FSG
telsap_en	Telsap 2100
Access Control Systems	
abc_en	AccessNet (ABC)

biosmart2_en	BioSmart2
castle_en, castle_es	Castle
ravelin_en	Gate Parking
nc_en	Honeywell N-1000
impro_en	Impro
pelco_en, pelco_es	Pelco
salto_en, salto_es	Salto
soyal_en	Soyal
sphinx_en, sphinx_es	Sphinx
ansondb_en	AnsonDb
chomtech_en	Chomtech Access Control System
keyking_en	KeyKing
nitgen_en	Nitgen
paxton_net2_en, paxton_net2_es	Paxton NET2 ACS
suprema_en, suprema_es	Suprema
unicard_en	Unicard
velocity_en	Velocity
zk_en	ZK Teco
AC/FA Systems	
apl2_en	Apollo SDK v.3
foxsec_en	FoxSec
hid_en, hid_es	HID Edge/VertX
galaxy_en, galaxy_es	Honeywell Galaxy Dimension
glx2_en	Honeywell Galaxy Dimension v.2
paradox_en	Paradox

winpak_en	WinPak
Perimeter Intrusion Detection Systems	
forteza_en	Forteza
intrepid2_en	Intrepid Grunt
intrepid3_en	Intrepid II
xtralis2wayprotocol_en	ADPRO PRO
fft_en	FFT CAMS3
Control readers	
fs80cr_en	FS-80
omnikey_en	HID Omnikey control reader
suprema_cr_en	Suprema BioMini control reader
Application software	
account_manager_en	Access Manager
virtual_acs_server_en	Virtual Access Server
event_manager_en, event_manager_es	Event Manager
dbimport2_en	User Import
db_import_en	Database Import/Export
an_en	Security equipment
psimtoonnetbridge_en	Axxon One data sender
support_temp_level_ru	Поддержка временных уровней доступа
agency_person_en, agency_person_es	Visitor Management System
worktime_en, worktime_es	Time & Attendance
photoidentification_en, photoidentification_es	Photo Identification
acfa_emulator_ru	Эмулятор ОПС/СКУД

4.6.2 Remove

Use this command in order to remove all installed modules:

```
msiexec /x Product.msi
```

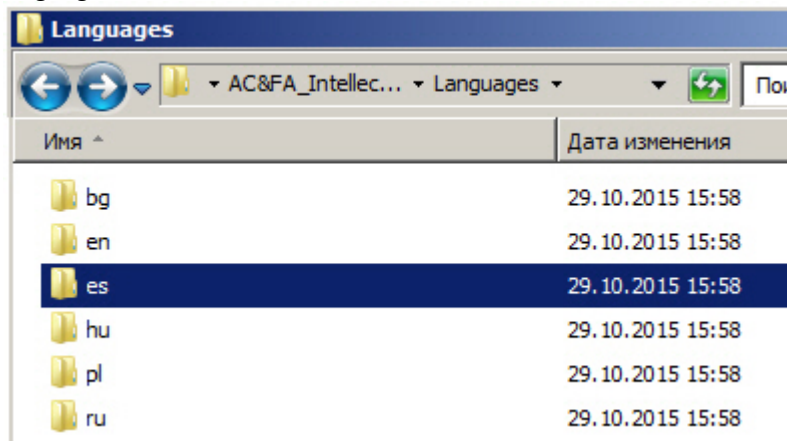
5 Change of the ACFA PSIM localization language

On default the language of installer and installation language of the *ACFA PSIM* software package are defined on the basis of language which was in use while base *Axxon PSIM* installation.

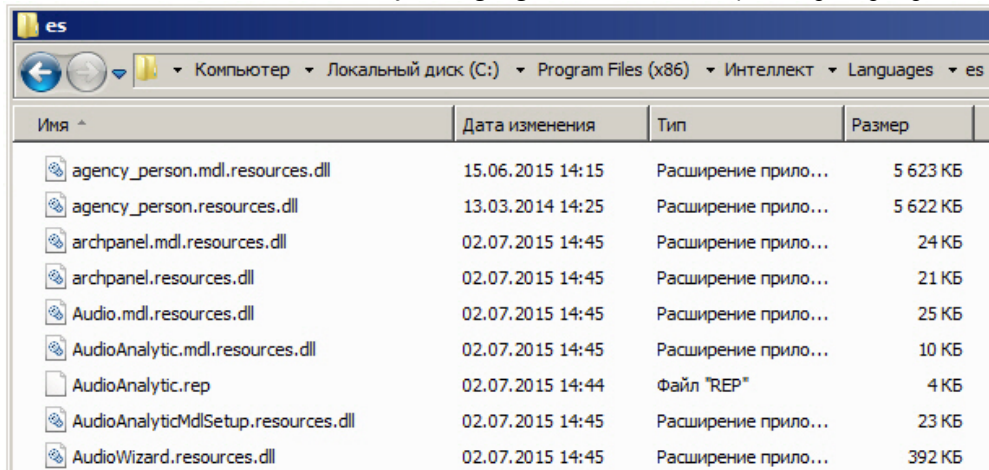
Procedure of changing the *Axxon PSIM* language is presented in the [Intellect Software System's interface language](#) section.

To change the *ACFA PSIM* language, do the following:

1. Download the [Language Pack for ACFA Module v.5.4](#) from the AxxonSoft web-site. The language pack contains localization files for the *ACFA PSIM* integration modules.
2. Extract files from the language pack. The **Language** folder contains subfolders corresponding to existed languages.



3. From the folder corresponding to the required language copy localization files for all integration modules to the *<Axxon PSIM installation directory>\Languages\<folder of corresponding language>*.



4. Update the database structure using the *idb.exe* utility (see the [Interface elements of the idb.exe window section](#) section).

Change of the *ACFA PSIM* localization language is completed.

Example of changing the *ACFA PSIM* language from english to spanish is follows.

The *Axxon PSIM* and *ACFA PSIM* software packages were installed in english. Using the language pack from the AxxonSoft [web-site](#) language of the *Axxon PSIM* software package was changed into spanish (see the [Intellect Software System's interface language](#) section). To change the *ACFA PSIM* localization language into spanish, copy

localization files from the AC&FA_Axxon PSIM.v.5.4_lang\Languages\es folder to the <Axxon PSIM installation directory>\Languages\es and update the database structure.