



Guide for configuring and working with the Mavili integration module

ACFA PSIM 1.5

Last update 25/07/2025

Table of Contents

| | |
|---|----------|
| 1 Introduction into the Guide for configuring and working with the Mavili integration module | 3 |
| 1.1 Purpose of the document | 3 |
| 1.2 General information about the Mavili integration module..... | 3 |
| 2 Supported hardware, software and licensing of the Mavili integration module.. | 4 |
| 3 Configuring the Mavili integration module..... | 5 |
| 3.1 Configuring the parent object of the Mavili integration module..... | 5 |
| 4 Working with the Mavili integration module | 7 |
| 4.1 General information about working with the Mavili integration module | 7 |
| 4.2 Managing the parent object of the Mavili integration module | 7 |
| 4.3 Managing the network of the Mavili integration module..... | 7 |
| 4.4 Managing the panel of the Mavili integration module | 7 |
| 4.5 Managing the layer of the Mavili integration module | 8 |
| 4.6 Managing the device of the Mavili integration module..... | 8 |
| 4.7 Example of a configured macro of the Mavili integration module | 9 |

1 Introduction into the Guide for configuring and working with the Mavili integration module

On the page:

- [Purpose of the document](#)
- [General information about the Mavili integration module](#)

1.1 Purpose of the document

The *Guide for configuring and working with the Mavili integration module* is a reference and information manual and is intended for configuration specialists and operators of the *Mavili* integration module. This module is a part of the fire and security alarm (FSA) subsystem implemented on the basis of *ACFA PSIM*.

The Guide has the following information:

1. General information about the *Mavili* integration module.
2. Configuring the *Mavili* integration module.
3. Working with the *Mavili* integration module.

1.2 General information about the *Mavili* integration module

The *Mavili* integration module is a part of the FSA implemented on the basis of *ACFA PSIM* that is used to perform the following functions:

1. Configuring the *Mavili* FSA (manufactured by *Mavili Elektronik A.Ş.*).
2. Providing interaction of the *Mavili* FSA with *ACFA PSIM* (monitoring, control).

Before configuring the *Mavili* integration module, install the necessary hardware on the protected facility.

2 Supported hardware, software and licensing of the Mavili integration module

| | |
|--------------------------------------|---|
| Information on manufacturer | Mavili Elektronik A.Ş Şerifali Mahallesi Kutup Sokak No:27/1-2-4 Ümraniye TR-34775 İSTANBUL Tel: +90 216 466 45 05 (pbx) Fax: +90 216 466 45 10 Email: mavali@mavali.com.tr Website: www.mavili.com.tr |
| Type of integration | SOFT-SOFT |
| Hardware connection interface | Ethernet |

Supported hardware

| Hardware | Function |
|-------------|-------------------------------|
| ML-1110.SCI | Analog fire detector |
| ML-1362.SCI | Monitoring and control module |
| ML-1372.SCI | Monitoring and control module |

Supported software

| Software | Function |
|-------------------------|--|
| Sprvsr+ Web Plug-in Web | Graphical monitoring and management software |

Module licensing

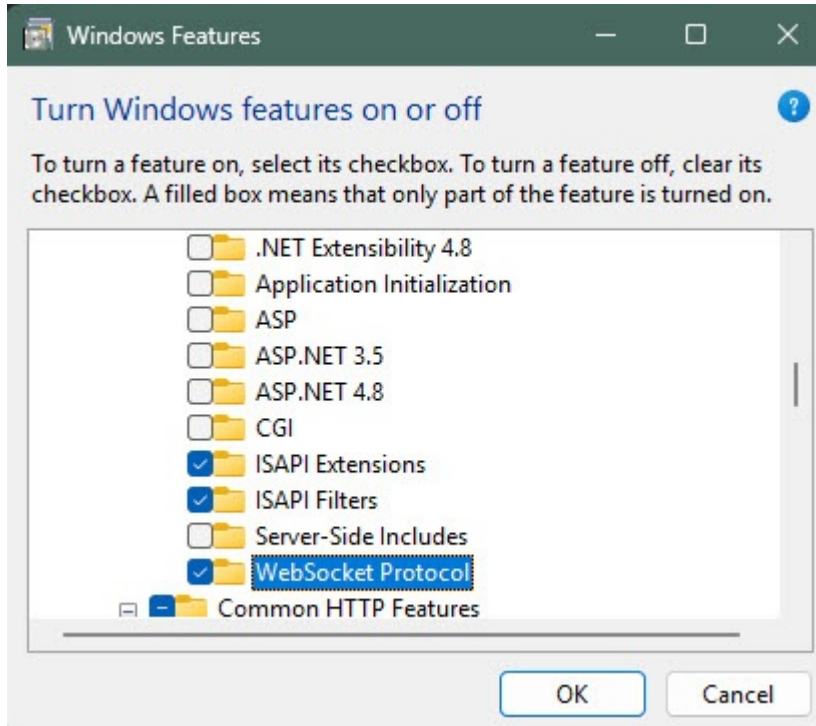
Per each device (**ACFASensor**).

3 Configuring the Mavili integration module

For the correct operation with the Sprvsr+ Web Plug-in Web manufacturer's software, you must first enable WebSocket in IIS (Internet Information Services).

To enable the WebSocket component, do the following:

1. Open **Server Manager**.
2. Select **Add roles and features**.
3. Go to **Features** → **Web Server (IIS)** → **Web Server** → **Application Development**.
4. Set the **WebSocket Protocol** checkbox.



5. Click the **OK** button to save the changes.

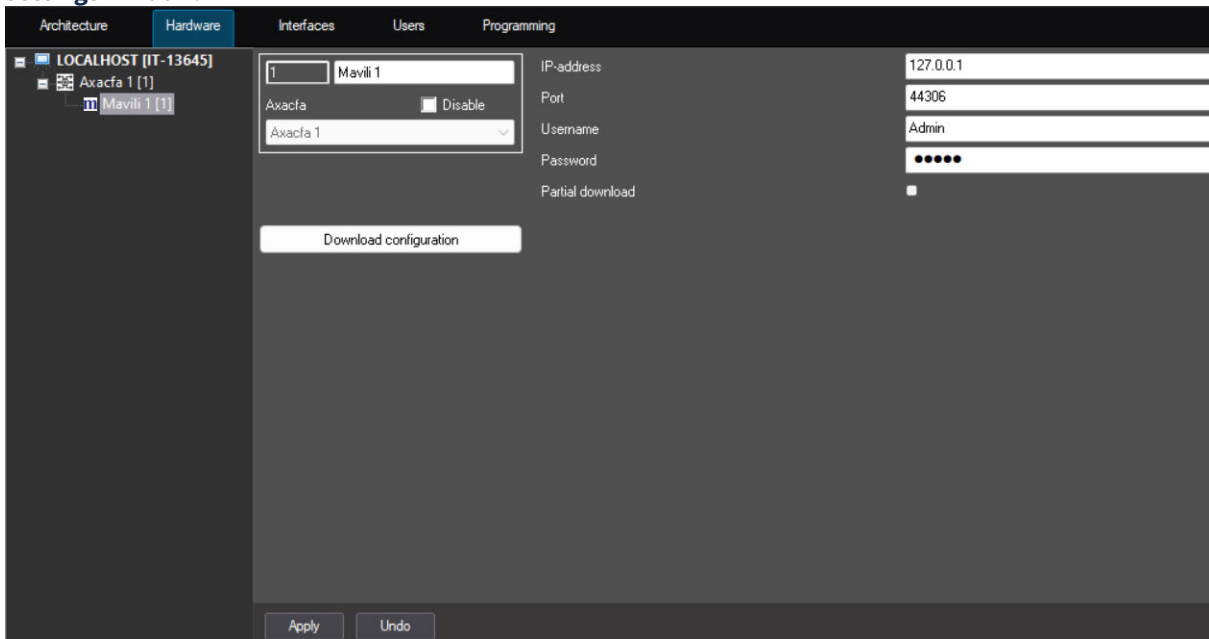
The WebSocket component is enabled.

3.1 Configuring the parent object of the Mavili integration module

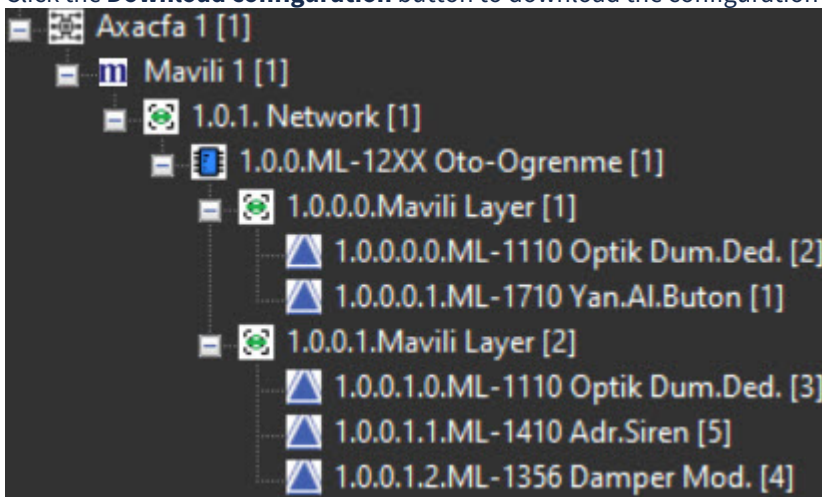
To work with the *Mavili* integration module, you must install and configure the *AxACFA* feature. For more details, see [Connecting and configuring the AxACFA feature](#).

To configure the *Mavili* parent object, do the following:

1. Create the **Mavili** parent object on the basis of the **Axacfa** object on the **Hardware** tab of the **System settings** window.



2. In the **IP-address** field, specify the IP address to connect to the Sprvsr+ Web Plug-in Web manufacturer's software.
3. In the **Port** field, specify the number of the port to connect to the Sprvsr+ Web Plug-in Web manufacturer's software.
4. In the **Username** field, specify the name of the user to authorize in the Sprvsr+ Web Plug-in Web manufacturer's software.
5. In the **Password** field, specify the name of the user to authorize in the Sprvsr+ Web Plug-in Web manufacturer's software.
6. Set the **Partial download** checkbox to enable layer-by-layer configuration downloading. The checkbox is clear by default.
7. Click the **Apply** button to save the settings.
8. Click the **Download configuration** button to download the configuration and build the hardware tree.



Configuration of the *Mavili* parent object is complete.

4 Working with the Mavili integration module

4.1 General information about working with the Mavili integration module

To work with the *Mavili* integration module, use the following interface objects:

1. **Map.**
2. **Event Viewer.**


For the information on configuring these interface objects, see the Axxon PSIM [Administrator's Guide](#).

For the information on working with these interface objects, see the Axxon PSIM [Operator's Guide](#).

4.2 Managing the parent object of the Mavili integration module

You cannot manage the parent object of the *Mavili* integration module in the **Map** window.


The parent object of the *Mavili* integration module can have the following states:

| | |
|---|--------------|
|  | Connected |
|  | Disconnected |
|  | Unknown |

4.3 Managing the network of the Mavili integration module

You cannot manage the network of the *Mavili* integration module in the **Map** window.

The *Mavili* network can have the following state:

| | |
|---|----------|
|  | Obtained |
|---|----------|

4.4 Managing the panel of the Mavili integration module


You can manage the panel of the *Mavili* integration module in the **Map** window using the menu of the corresponding object.

Commands to manage the panel of the *Mavili* integration module are described in the table:

| Menu command | Function |
|--------------|----------|
|--------------|----------|

| | |
|----------------|---|
| Reset | Reset |
| Silence buzzer | Set the acoustic alarm/buzzer/audio signal to silent mode |
| Raise alarm | Raise alarm |
| Silence alarm | Silence alarm |
| Evacuation | Evacuation mode |


The *Mavili* panel can have the following states:

| | |
|---|----------|
|  | Obtained |
|---|----------|

4.5 Managing the layer of the Mavili integration module

You cannot manage the layer of the *Mavili* integration module in the **Map** window.

The *Mavili* layer can have the following states:

| | |
|---|----------|
|  | Obtained |
|---|----------|

4.6 Managing the device of the Mavili integration module

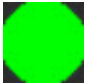





You can manage the device of the *Mavili* integration module in the **Map** window using the menu of the corresponding object.

Commands to manage the *Mavili* integration module are described in the table:

| Menu command | Function |
|--------------------|---|
| Output activation | Activate the output device and open a damper |
| Output passivation | Back the output device to normal condition and close a damper |

The *Mavili* device can have the following states:

| | |
|---|---------|
|  | Unknown |
|---|---------|

| | |
|--|------------------------|
|  | Normal |
|  | Alarm |
|  | Damper opened |
|  | Damper closed |
|  | Changing damper status |
|  | Damper fault |

4.7 Example of a configured macro of the Mavili integration module

- ✓ [Creating and using macros](#)
- [Examples of macros](#)

When working with the *Mavili* integration module, you can configure a macro that triggers when an event is received from *Mavili* devices.

Example of a configured macro:

Response sending delay (s):

Disable

Fast call

Icon type:

Settings
 State

Local Hidden

Events

| Type | Nu... | Name | Event |
|---------------|-------|---------------------------|-------|
| Mavili Device | 1 | 1.0.0.0.1.ML-1710 Yan.Al. | Alarm |

Parameters

| Name | Value |
|------|-------|
| | |

Actions

| Type | Nu... | Name | Action |
|--------------|-------|------------------------|------------|
| Mavili Panel | 1 | 1.0.0.ML-1200 Dto-Ogr. | Evacuation |

Parameters

| Name | Value |
|------|-------|
| | |

Apply

Undo