



Guide for configuring and working with the MicroEngine integration module

ACFA PSIM 1.1

Last update 08/28/2024

Table of Contents

| | | |
|----------|--|----------|
| 1 | Introduction into the Guide for configuring and working with the MicroEngine integration module | 3 |
| 1.1 | Purpose of the document | 3 |
| 1.2 | General information about the MicroEngine integration module..... | 3 |
| 2 | Supported software and licensing of the MicroEngine integration module..... | 4 |
| 3 | Configuring the MicroEngine integration module..... | 5 |
| 3.1 | Configuring the MicroEngine parent object..... | 5 |
| 4 | Working with the MicroEngine integration module | 6 |
| 4.1 | General information about working with the MicroEngine integration module | 6 |
| 4.2 | Managing the MicroEngine parent object..... | 6 |
| 4.3 | Managing the MicroEngine controller..... | 6 |
| 4.4 | Managing the MicroEngine output..... | 7 |
| 4.5 | Managing the MicroEngine door | 7 |

1 Introduction into the Guide for configuring and working with the MicroEngine integration module

On the page:

- Purpose of the document
- General information about the MicroEngine integration module

1.1 Purpose of the document

The *Guide for configuring and working with the MicroEngine integration module* is a reference and information manual and is intended for configuration specialists of the *MicroEngine* integration module.

The Guide has the following information:

1. General information about the *MicroEngine* integration module.
2. Configuration of the *MicroEngine* integration module.
3. Operation of the *MicroEngine* integration module.

1.2 General information about the MicroEngine integration module

The *MicroEngine* integration module is the *ACFA PSIM*-based *ACS* component. The module is used for the *MicroEngine ACS* interaction with *ACFA PSIM* (monitoring, configuration (of users only), control).

Note

For more information about the *MicroEngine ACS*, refer to the official documentation for this system (manufacturer MicroEngine Technology Sdn Bhd).

Before configuring the *MicroEngine* integration module do the following:

1. Install the *MicroEngine* hardware on the protected facility (see *MicroEngine* reference documentation).
2. Connect the *MicroEngine* hardware to the *Axxon PSIM Server* (see *MicroEngine* reference documentation).

2 Supported software and licensing of the MicroEngine integration module

| | |
|-------------------------|--|
| Manufacturer | MicroEngine Technology Sdn Bhd Unit 11-06, Block A, Phileo Damansara 2, Section 16, Jalan 16/11, Off Jalan Damansara, 46350 Petaling Jaya, Selangor Darul Ehsan, Malaysia Phone: (+603) 7954 0820 Website: https://www.microengine.net/ Email: enquiry@microengine.net |
| Integration type | SOFT-SOFT |

Supported software

| Software | Function |
|-----------------|-------------------------|
| xPortalNet v1.5 | Access control software |

Module licensing

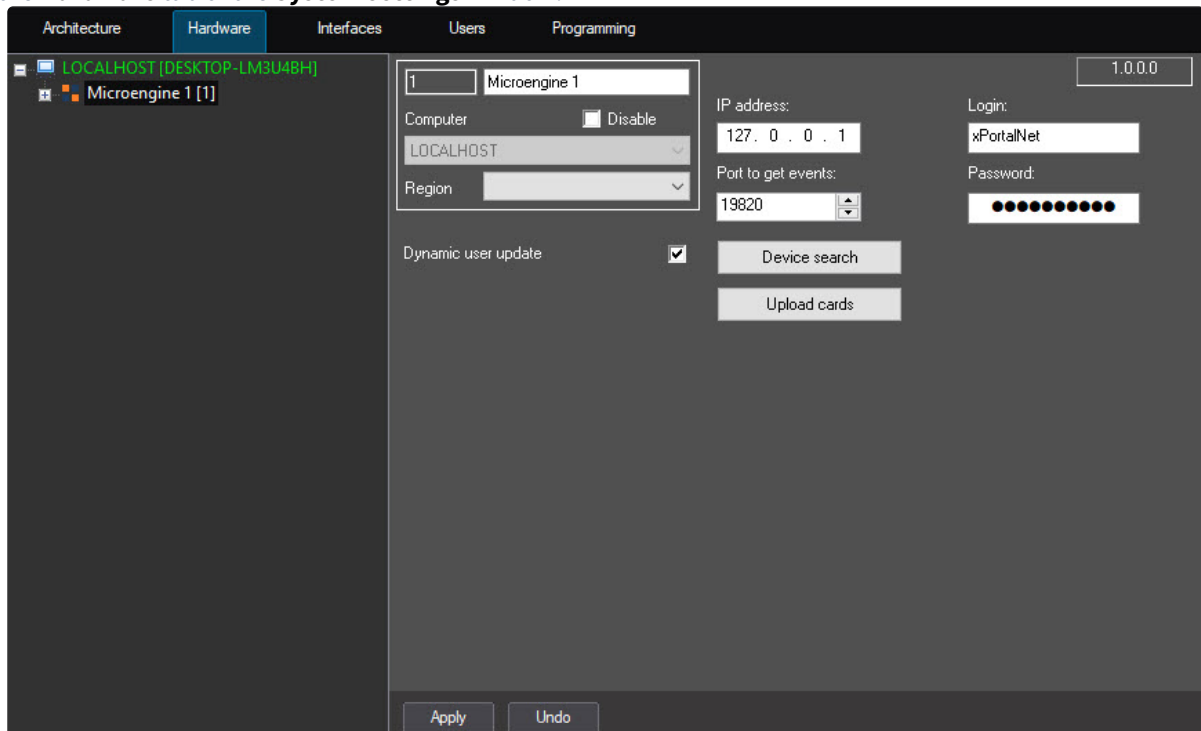
Per one door.

3 Configuring the MicroEngine integration module

3.1 Configuring the MicroEngine parent object

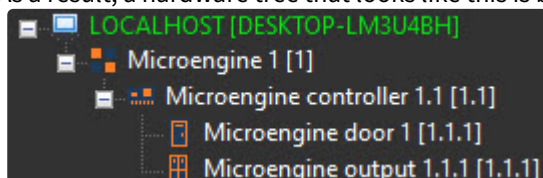
To configure the *MicroEngine* parent object, do the following:

1. Go to the settings panel of the **Microengine** object that is created on the basis of the **Computer** object on the **Hardware** tab of the **System settings** window.



2. In the **IP address** field, specify the IP address of the Server with the installed *MicroEngine* "xPortalNet" ACS.
3. In the **Port to get events** field, specify the number of the computer port to get events.
4. In the **Login** and **Password** fields, specify the login and password to connect to the *MicroEngine* "xPortalNet" ACS.
5. Click the **Device search** button to find all *MicroEngine* devices connected to the Server and automatically build a hardware tree.

As a result, a hardware tree that looks like this is built:



6. Click the **Upload cards** button to write all users to the *MicroEngine* controller.
7. Set the **Dynamic user update** checkbox to have all changes to user access parameters automatically written to the *MicroEngine* controller.
8. Click the **Apply** button to save the changes.

Configuration of the *MicroEngine* parent object is complete.

4 Working with the MicroEngine integration module

4.1 General information about working with the MicroEngine integration module

The following interface objects are used to work with the *MicroEngine* integration module:

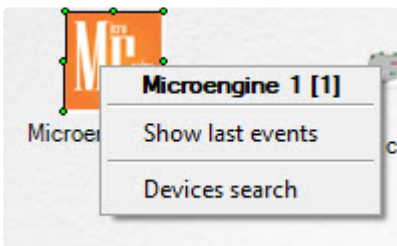
1. **Map.**
2. **Event Viewer.**
3. **Access Manager.**

For the information on configuring these interface objects, see the *Axxon PSIM Administrator’s Guide* and *Guide for configuring and working with the Access Manager integration module*.

For the information on working with these interface objects, see the *Axxon PSIM Operator’s Guide* and *Guide for configuring and working with the Access Manager integration module*.

4.2 Managing the MicroEngine parent object



You can manage the *MicroEngine* parent object in the **Map** window using the menu of the **Microengine** object.



Command to manage the *MicroEngine* parent object:

- Devices search—search for all *MicroEngine* devices connected to the Server.

The *MicroEngine* parent object can have the following states:

| | |
|---|---------|
|  | Online |
|  | Offline |

4.3 Managing the MicroEngine controller

You cannot manage the *MicroEngine* controller in the **Map** window.

The *MicroEngine* controller can have the following states:

| | |
|---|---------|
|  | Online |
|  | Offline |
|  | Unknown |

4.4 Managing the MicroEngine output

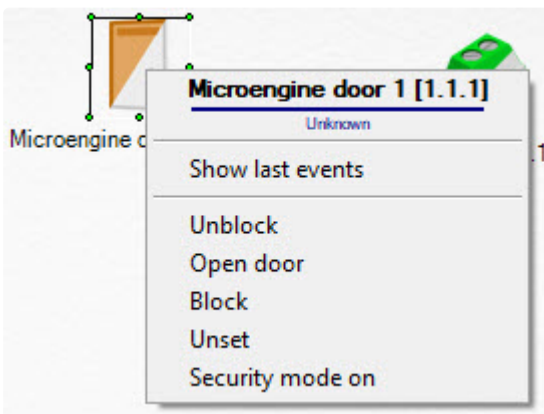
You cannot manage the *MicroEngine* output in the **Map** window.

The *MicroEngine* output can have the following states:

| | |
|---|---------|
|  | Online |
|  | Offline |
|  | Unknown |

4.5 Managing the MicroEngine door








You can manage the *MicroEngine* door in the **Map** window using the menu of the **Microengine door** object.






Commands for managing the *MicroEngine* door are described in the table:

| Function menu command | Function |
|-----------------------|----------------|
| Unblock | Unblock a door |
| Open door | Open a door |
| Block | Block a door |
| Unset | Disarm a door |
| Security mode on | Arm a door |

The *MicroEngine* door can have the following states:

| | |
|---|----------------|
|  | Disconnected |
|  | Connected |
|  | Door closed |
|  | Door forced |
|  | Door blocked |
|  | Door left open |
|  | Door opened |

| | |
|---|----------------|
|  | Armed |
|  | Door unblocked |
|  | Disarmed |
|  | Unknown |