



# PERIDECT+ (Drivers pack) Integration Module Setup and User Guide

ACFA PSIM 1.1

Last update 05/03/2024

## Table of Contents

<b>1</b>	<b>Introduction into PERIDECT+ Integration Module Setup and User Guide .....</b>	<b>3</b>
1.1	Purpose and Structure of the Guide.....	3
1.2	General information about the PERIDECT+ integration module.....	3
<b>2</b>	<b>Hardware compatibility and licensing of the PERIDECT+ module .....</b>	<b>4</b>
<b>3</b>	<b>Configuring the PERIDECT+ Integration Module .....</b>	<b>5</b>
3.1	Pre-configuring the PERIDECT+ PIDs .....	5
3.2	Connecting the PERIDECT+ PIDs to ACFA PSIM .....	5
3.3	Configuring the PERIDECT+ line controller.....	6
3.4	Configuring the PERIDECT+ detection sensors .....	7
3.4.1	Configuring the PERIDECT+ detection sensors outside the group .....	7
3.4.2	Configuring the PERIDECT+ detection sensors group.....	8
3.5	Configuring the PERIDECT+ extension module .....	8
<b>4</b>	<b>Working with the PERIDECT+ integration module .....</b>	<b>10</b>
4.1	General information about working with the PERIDECT+ integration module .....	10
4.2	Managing the PERIDECT+ central processor .....	10
4.3	Managing the PERIDECT+ line controller .....	10
4.4	Managing the PERIDECT+ detection sensor .....	11
4.5	Managing the PERIDECT+ detection sensor group.....	12
4.6	Managing the PERIDECT+ detector module .....	13

# 1 Introduction into PERIDECTION+ Integration Module Setup and User Guide

## On the page:

- [Purpose and Structure of the Guide](#)
- [General information about the PERIDECTION+ integration module](#)

## 1.1 Purpose and Structure of the Guide

The *PERIDECTION+ Module Settings Guide* is a reference manual designed for *PERIDECTION+* Module users. This module functions as a part of perimeter intrusion detection system based on the *ACFA PSIM* software package.

This Guide presents the following materials:

1. General information about the *PERIDECTION+* integration module;
2. Configuration of the *PERIDECTION+* integration module;
3. Working with the *PERIDECTION+* integration module.

## 1.2 General information about the PERIDECTION+ integration module

The *PERIDECTION+* integration module works as a part of the **Security equipment** which is included as a compound of *ACFA PSIM*. It is designed to monitor and control detectors of the *PERIDECTION+* PIDs. Configuring the *PERIDECTION+* PIDs hardware in *ACFA PSIM* is not possible.

### **Attention!**

The following software is required for the *PERIDECTION+* integration module operation:

- *Drivers pack* (you can download it in here: [Drivers pack](#));
- Internet Explorer 11 or higher.

Before configuring the *PERIDECTION+* PIDs integration module, it is necessary to install the hardware onsite and perform the initial setup of the *PERIDECTION+* PIDs devices.

### **Note**

Detailed information about the *PERIDECTION+* PIDs is presented in the official documentation for this system (manufacturer: SIEZA).

## 2 Hardware compatibility and licensing of the PERIDECT+ module

<b>Manufacturer</b>	SIEZA Czech Republic, 108 00 Praha 10, Sazečská 645/12 Site: <a href="https://www.sieza.com/">https://www.sieza.com/</a> E-mail: <a href="mailto:sieza@sieza.com">sieza@sieza.com</a>
<b>Integration type</b>	Drivers Pack (OPC UA)
<b>Hardware connections</b>	Ethernet

### Supported equipment

Equipment	Function
Control Unit PERIDECT+ (CUP+)	Central processor of the "PERIDECT+" system.
Line Controller PERIDECT+ (LCP+)	Line controller of the "PERIDECT+" system.
Detection Sensor PERIDECT+ (DSP+)	Addressable detection sensor of the "PERIDECT+" system.
PERIDECT-IOP+/EXP (IOP+/EXP)	Extension module of the "PERIDECT+" system.

### Protection

For 1 detection sensor

## 3 Configuring the PERIDECT+ Integration Module

### 3.1 Pre-configuring the PERIDECT+ PIDs

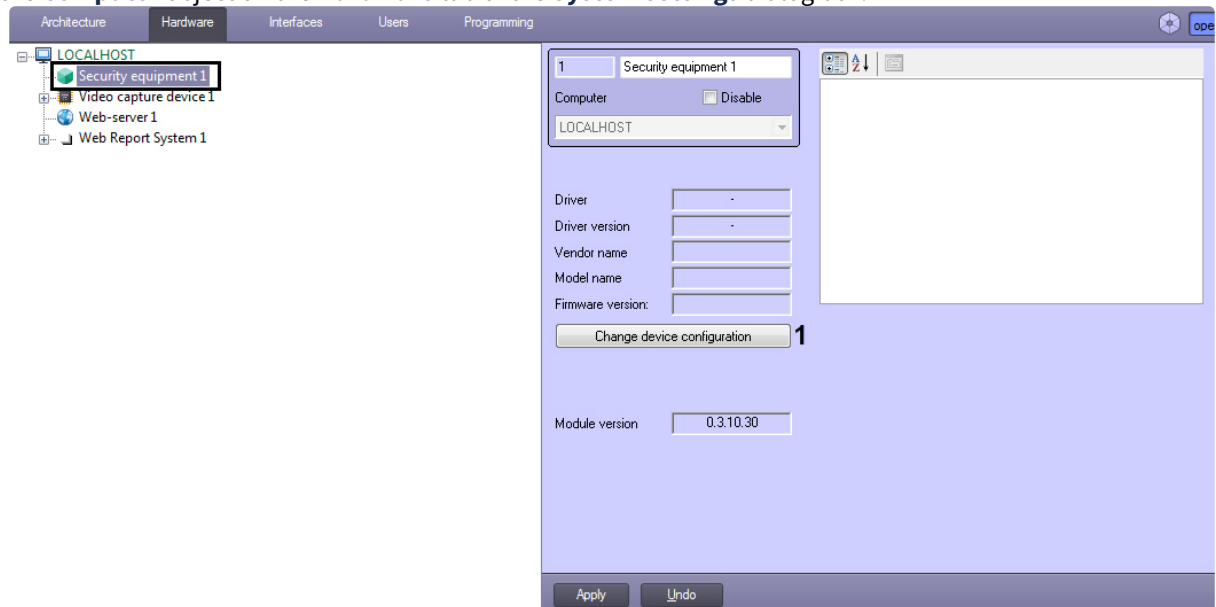
Before you configure the *PERIDECT+* module in *ACFA PSIM*, do the following:

1. Request the *PERIDECT+* PIDs utility from the manufacturer and install it.
2. Establish a connection to the *CUP+* device and make the necessary settings according to the manufacturer's instructions.

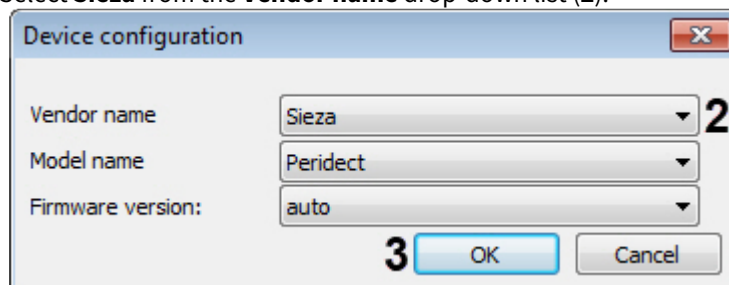
### 3.2 Connecting the PERIDECT+ PIDs to ACFA PSIM

The *PERIDECT+* PIDs connection to *ACFA PSIM* is configured as follows:

1. Go to the settings panel of the **Security equipment** object, which is created on the basis of the **Computer** object on the **Hardware** tab of the **System settings** dialog box.



2. On the settings panel of the **Security equipment** object, click the **Change device configuration** button (1).
3. Select **Sieza** from the **Vendor name** drop-down list (2).



**Note**

All other parameters will be filled in automatically.

4. Click **OK** button (3).

- In the **Address** field (4), enter the IP address of the *CUP+* device.

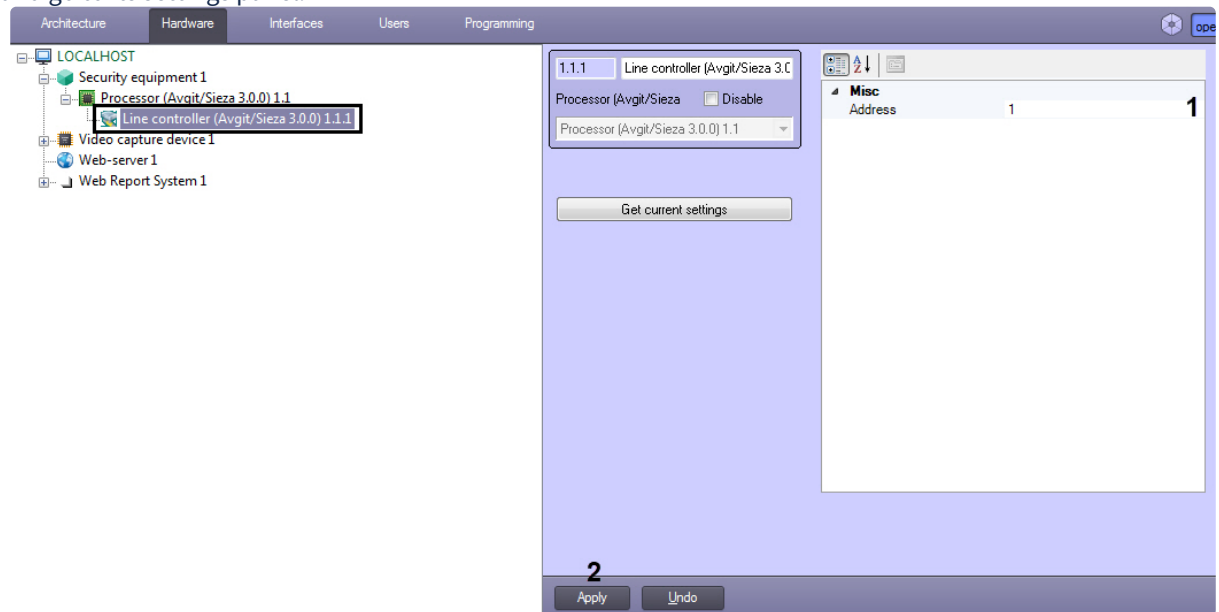
- Set the **Record configuration dynamically** parameter (5) to **True** if you want any changes made in *ACFA PSIM* to be automatically written to the device, otherwise **False**, i.e. changes will not be written to the device.
- In the **Login** (6) and **Password** (7) fields, enter the login and password, respectively, to connect to the *CUP+* device, if they have been installed.
- In the **Port** field (8) specify port **80**.
- Click the **Apply** button (9).

### 3.3 Configuring the PERIDECT+ line controller

After connecting the *PERIDECT+* software to *ACFA PSIM*, the **Processor** object will be automatically created under the **Security equipment** object, which corresponds to the *CUP+* device.

To configure the *PERIDECT+* line controller, do the following:

1. On the basis of the **Processor** object, create a **Line controller** object that corresponds to the *LCP+* device, and go to its settings panel.



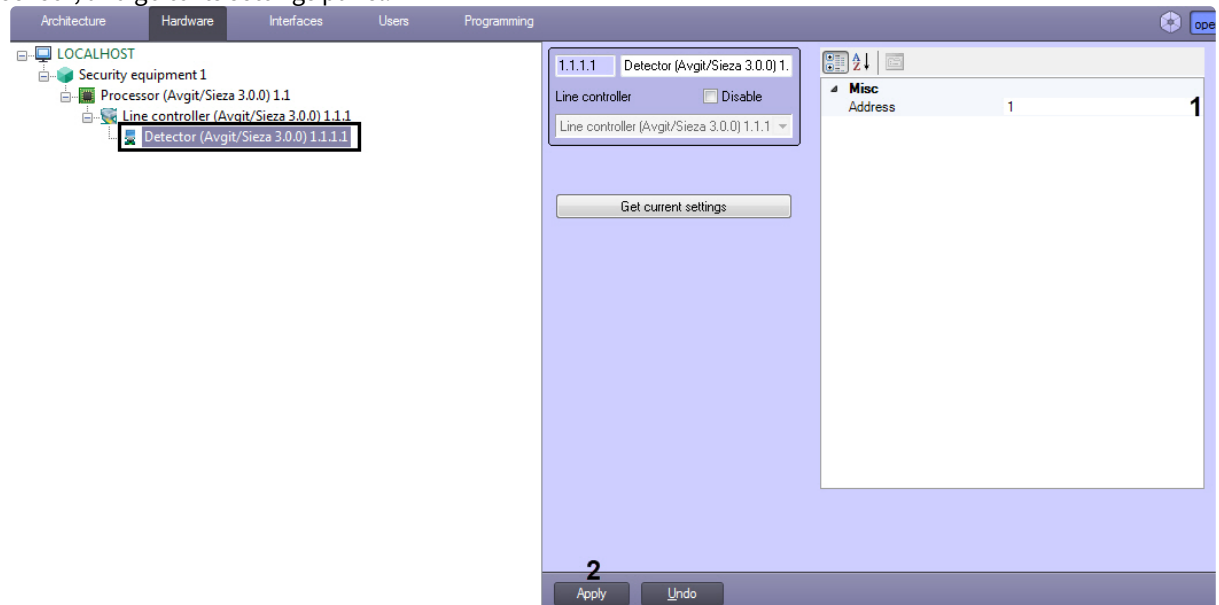
2. In the **Address** field (1), enter the device address in the system configuration.
3. Click the **Apply** button (2) to save the changes.

### 3.4 Configuring the PERIDECT+ detection sensors

#### 3.4.1 Configuring the PERIDECT+ detection sensors outside the group

To configure the *PERIDECT+* detection sensors outside the group, do the following:

1. On the basis of the **Line controller** object, create a **Detector** object that corresponds to the *DSP+* detection sensor, and go to its settings panel.



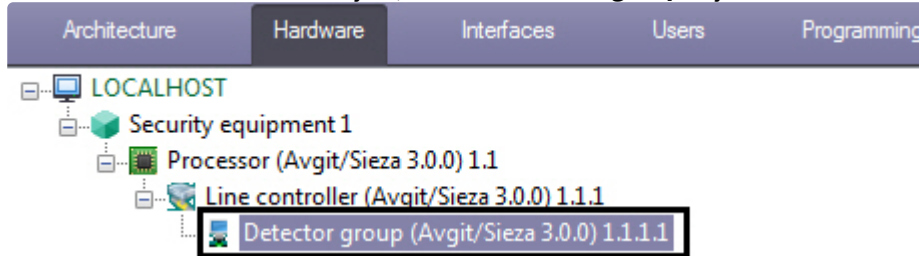
2. In the **Address** field (1) enter the address of the detection sensor in the system configuration.

3. Click the **Apply** button (2) to save the changes.

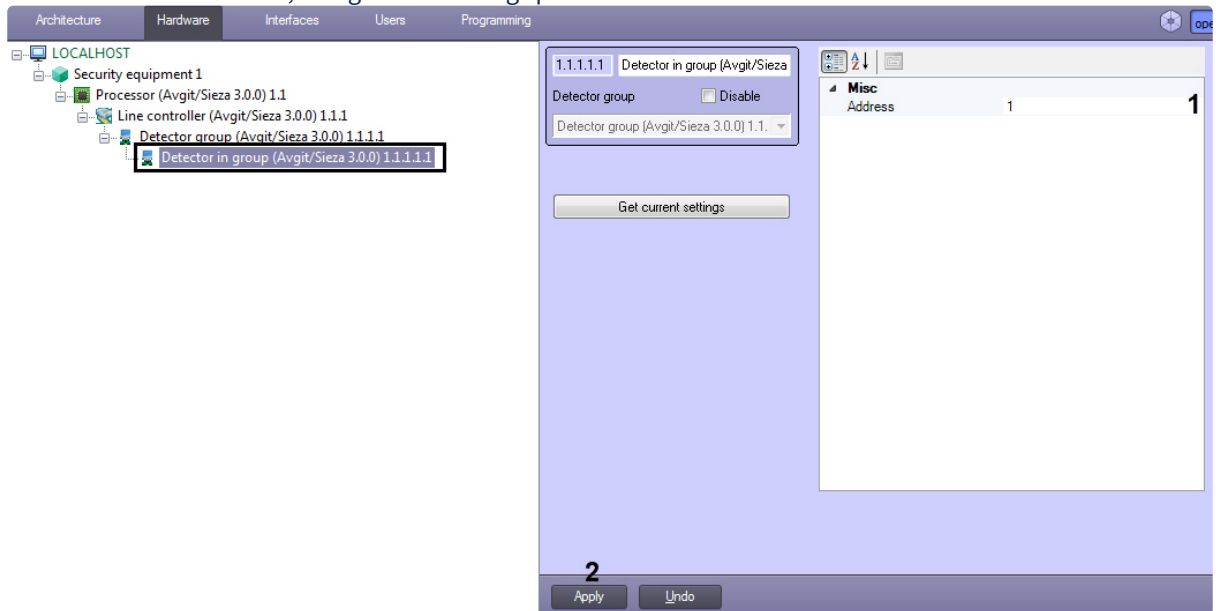
### 3.4.2 Configuring the PERIDECT+ detection sensors group

To configure the *PERIDECT+* detection sensors group, do the following:

1. Based on the **Line controller** object, create a **Detector group** object.



2. On the basis of the **Detector group** object, create a **Detector in group** object that corresponds to the *DSP+* detection sensor, and go to its settings panel.

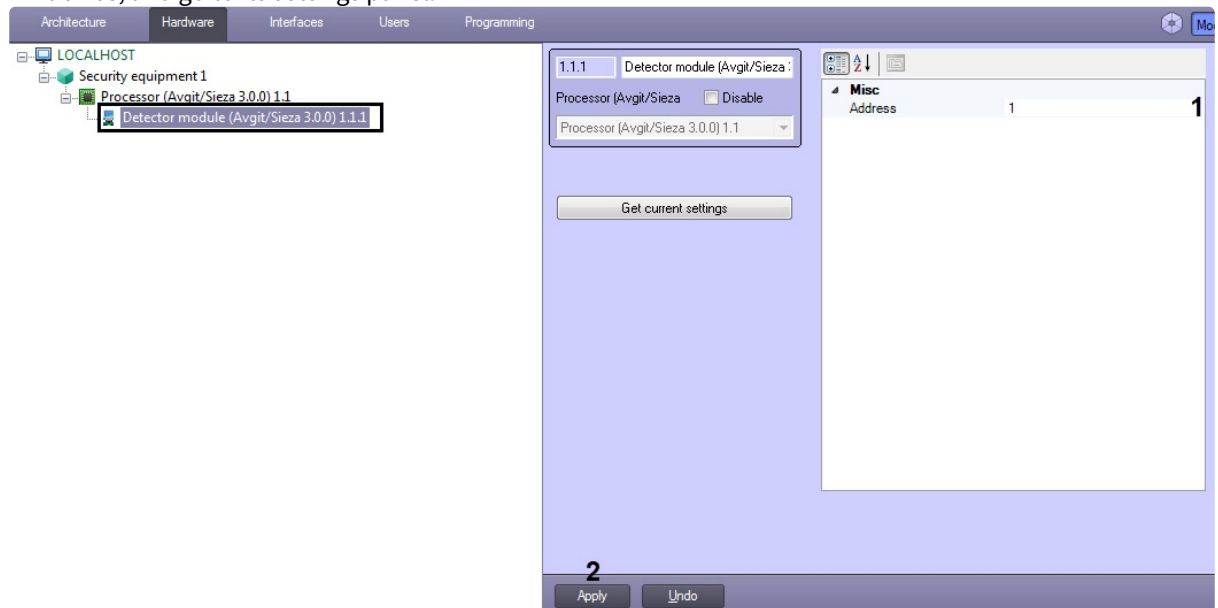


3. In the **Address** field (1) enter the address of the detection sensor in the system configuration.
4. Click the **Apply** button (2) to save the changes.

### 3.5 Configuring the PERIDECT+ extension module

To configure the *PERIDECT+* extension module, do the following:

1. On the basis of the **Processor** object, create a **Detector module** object that corresponds to the *IOP+/EXP* device, and go to its settings panel.



2. In the **Address** field (1) enter the address of device in the system configuration.
3. Click the **Apply** button (2) to save the changes.

## 4 Working with the PERIDECT+ integration module

### 4.1 General information about working with the PERIDECT+ integration module

The following interface objects are used for working with *PERIDECT+* integration module:

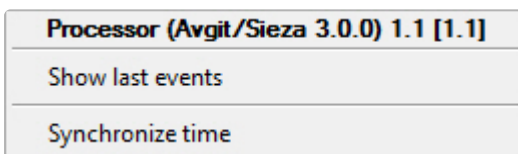
1. **Map.**
2. **Events protocol.**

Information about **Map** and **Events protocol** interface objects' configuration is given in the [Axxon PSIM Software Package: Administrator's Guide](#).

Working with these interface objects is given in details in [Axxon PSIM Software Package: Operator's Guide](#).

### 4.2 Managing the PERIDECT+ central processor



The *PERIDECT+* central processor is managed in the **Map** interactive window using the **Processor** object functional menu:



The **Processor** object functional menu commands description is given in the table.

Menu command	Function performed
Synchronize time	Synchronize time



The following states are possible:

	Normal
	Failure

### 4.3 Managing the PERIDECT+ line controller

The *PERIDECT+* line controller is not controlled in the **Map** interactive window.

The following states are possible:

	Normal
	Failure

#### 4.4 Managing the PERIDECT+ detection sensor

The *PERIDECT+* detection sensor is managed in the **Map** interactive window using the **Detector** object functional menu:

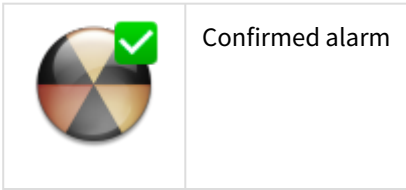
<b>Detector (Avgit/Sieza 3.0.0) 1.1.1.1 [1.1.1.1]</b>
Show last events
Confirm alarm status

The **Detector** object functional menu commands description is given in the table.

Menu command	Function performed
Confirm alarm status	Operator acknowledgment of alarm

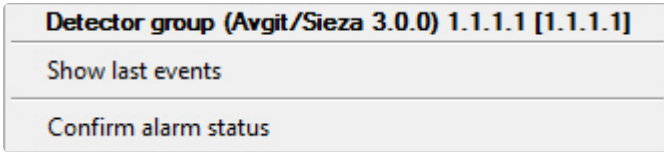
The following states are possible:

	Normal
	Intrusion
	Inactive alarm



## 4.5 Managing the PERIDECT+ detection sensor group

The *PERIDECT+* detection sensor group is managed in the **Map** interactive window using the **Detector group** object functional menu:



The **Detector group** object functional menu commands description is given in the table.

Menu command	Function performed
Confirm alarm status	Operator acknowledgment of alarm

The following states are possible:

	Normal
	Intrusion
	Inactive alarm
	Confirmed alarm

## 4.6 Managing the PERIDECT+ detector module



The *PERIDECT+* detector module is managed in the **Map** interactive window using the **Detector module** object functional menu:


<b>Detector module (Avgit/Sieza 3.0.0) 1.1.1 [1.1.1]</b>
Show last events
Arm detector
Confirm alarm status
Disarm detector

The **Detector module** object functional menu commands description is given in the table.

<b>Menu command</b>	<b>Function performed</b>
Arm detector	Arm the detection sensor
Confirm alarm status	Operator acknowledgment of alarm
Disarm detector	Disarm the detection sensor

The following states are possible:

	Normal
	Intrusion
	Inactive alarm
	Confirmed alarm

	Tamper
	Detection is disarmed