



Intellect

Pelco Integration Module Setup and User
Guide

1. List of terms used in Pelco Integration Module Setup and User Guide	3
2. Introduction into Pelco Integration Module Setup and User Guide	3
3. Supported hardware and licensing of the Pelco integration module	3
4. Configuring the Pelco ACS module	4
4.1 Configuration procedure for the Pelco ACS module	4
4.2 Configuration of the Pelco ACS module	4
4.3 Configuring the Pelco controller connection	5
4.4 Configuring the Pelco reader	6
4.5 Transferring the configuration to the Pelco controller	7
4.6 Configuring dynamic card forwarding for Pelco ACS	8
5. Operating the Pelco ACS Module	8

List of terms used in Pelco Integration Module Setup and User Guide

The access control system (ACS) – the hardware and software system performing the access control functions.

Intellect server – a computer with the *Intellect* **server** configuration installed.

Controller – a device designed to control personnel entry/exit to limited-access areas, for reading and decoding the access card code, automatic badge registration in the ACS, and performance monitoring.

Time schedule - a set of any number of time intervals during a day (24 hours) defined for several days (1 to 366), and the time intervals during specific dates. Time schedule defines a schedule of access to the secured object.

Introduction into Pelco Integration Module Setup and User Guide

On the page:

- [Purpose of the document](#)
- [General information about the Pelco ACS module](#)

Purpose of the document

This *Manual for installing and operating the Pelco module* is a reference and information tool, designed for specialists, for the installation and operation of the *Pelco* module. This module is included in the access control system (ACS) on the *ACFA Intellect* basis.

This manual includes the following topics:

1. general information about the *Pelco ACS* module;
2. installing the *Pelco ACS* module;
3. operating the *Pelco ACS* module.

General information about the *Pelco ACS* module

The *Pelco* module is an *ACFA Intellect* system ACS component, and is designed to perform the following functions:

1. configure the *Pelco ACS* (made by Infinias)
2. ensure interactivity between the *Pelco ACS* and the *ACFA Intellect* system (monitoring, control).



Note:

Detailed information on the *Pelco ACS* is available in the official system reference documentation.

Before installing the *Pelco ACS* the following steps should be carried out:

1. Install the *Pelco ACS* hardware onto the protected territory (see the *Pelco ACS* reference documentation).
2. Connect the *Pelco ACS* hardware to the Server.

Supported hardware and licensing of the Pelco integration module

Manufacturer	Infinias 9340 Priority Way West DriveIndianapolisIN 46240 USA sales@infinias.com support@infinias.com Main Number: 317.348.1086
Integration type	Low-level protocol
Equipment connection	Ethernet

Supported equipment

Equipment	Function	Features
eIDC Intelli-M	Access controller	1 door 2 readers Number of cardholders: 64,000 (8,000 in offline mode) Event log: 16,000 254 time zones Communication port: Ethernet

Protection

1 IP address, in fact - 1 controller.

Configuring the Pelco ACS module

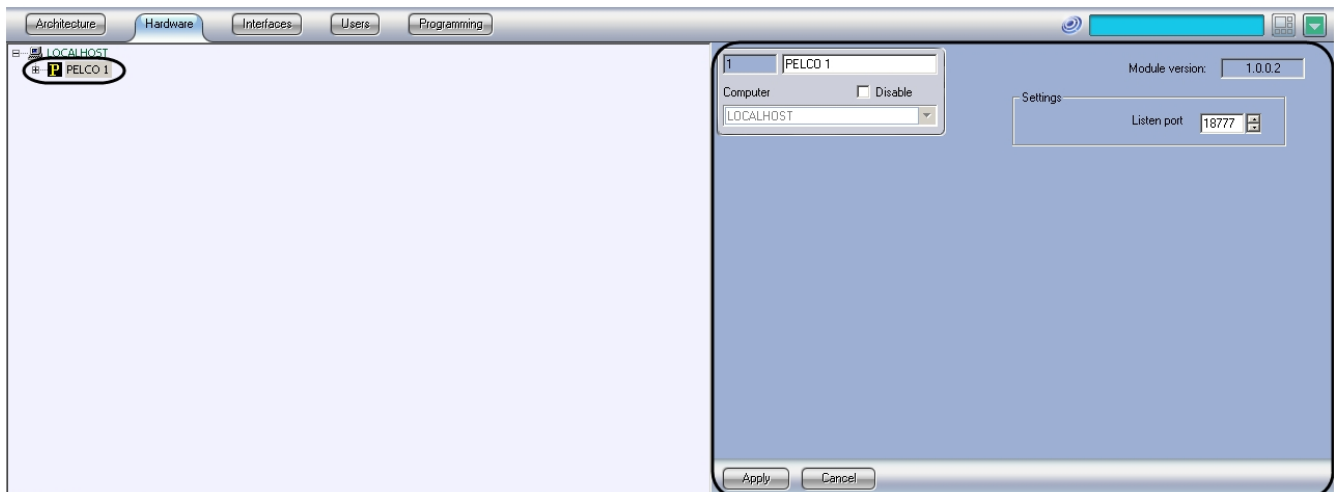
Configuration procedure for the Pelco ACS module

Install the *Pelco ACS* in the following sequence:

1. Activate the *Pelco ACS* module;
2. Configure the *Pelco* controller connection;
3. Configure the *Pelco* readers;
4. Transfer the configuration to the *Pelco* controller;
5. Configure dynamic access card transfer.

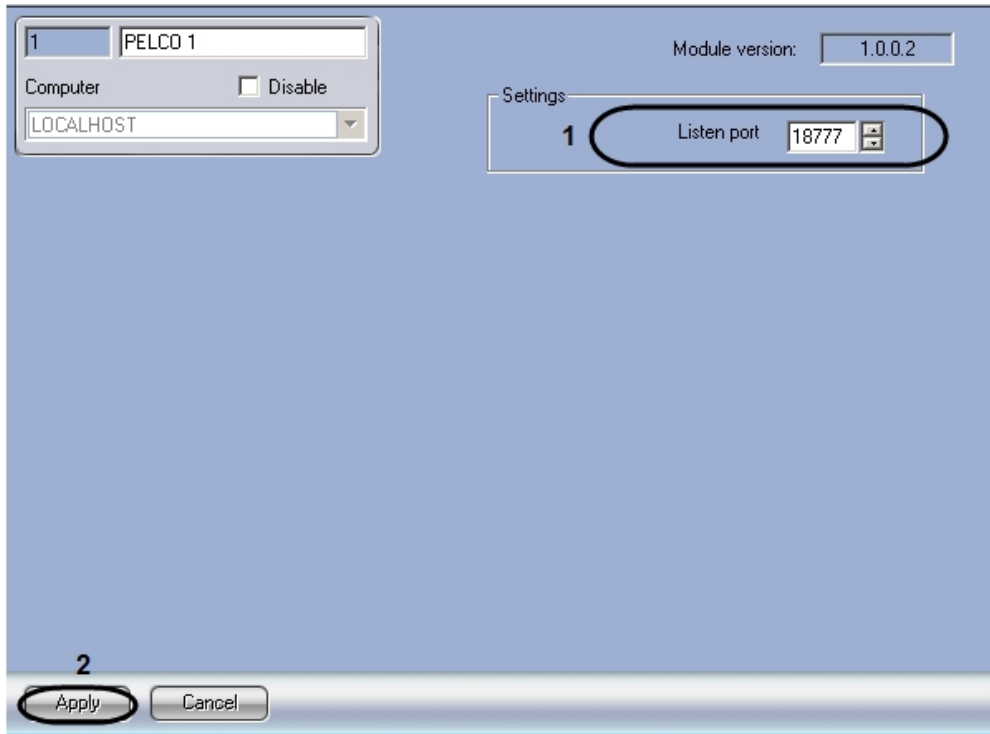
Configuration of the Pelco ACS module

To configure the *Pelco* module go to the *Pelco* object's settings panel. To create this object, go to the **System settings** dialog box, click the **Hardware** tab and select a parent **Computer (LOCALHOST)** object.



To configure the *Pelco ACS* module do the following:

1. Go to the **Pelco** object's settings panel.

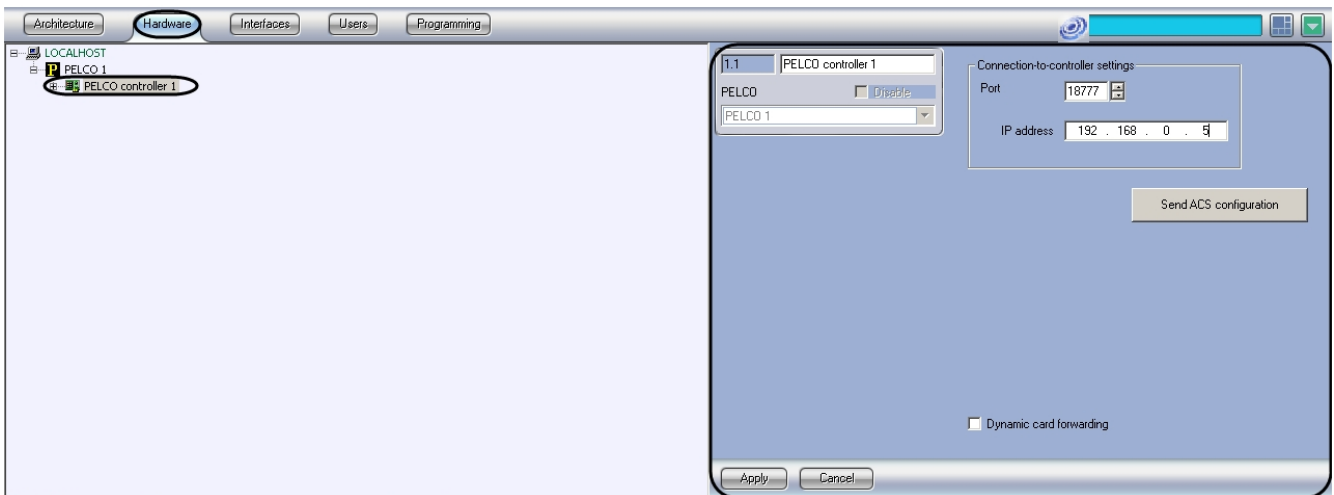


2. Enter the port number for message receiving from Pelco ACS in the **Listen port** (1).
3. Click the **Apply** button (2).

Configuration of *Pelco ACS* connection is completed.

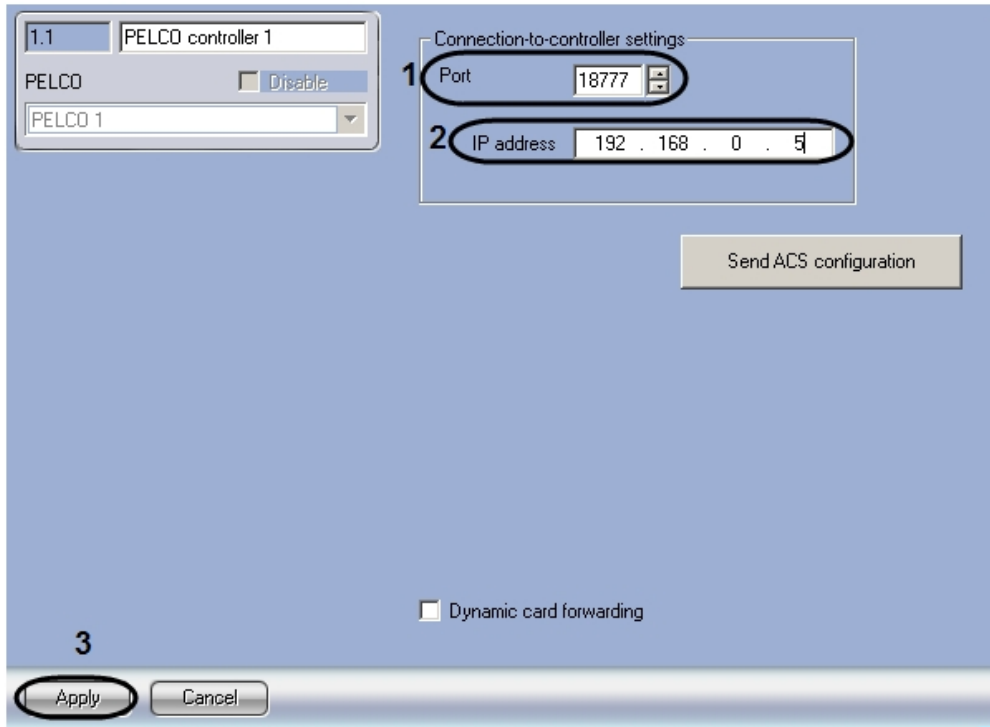
Configuring the Pelco controller connection

In the *ACFA Intellect* system, configure the **Pelco controller** connection on the **Pelco controller** settings panel which is on the **Hardware** tab of the **System settings** dialog box.



To configure the *Pelco* controller connection, follow these steps:

1. Go to the settings panel of the **Pelco Controller** object.



- In the **Port** field, use the **up and down** buttons to set the connection port for the *Pelco* controller (**1**).

Note.
By default, the controller connection port is set to 18777. The connection port may be changed using the web-interface controller. For details, see the manufacturer's reference documentation.

- In the **IP address** field, assign a mask for the *Pelco* controller IP address (**2**).

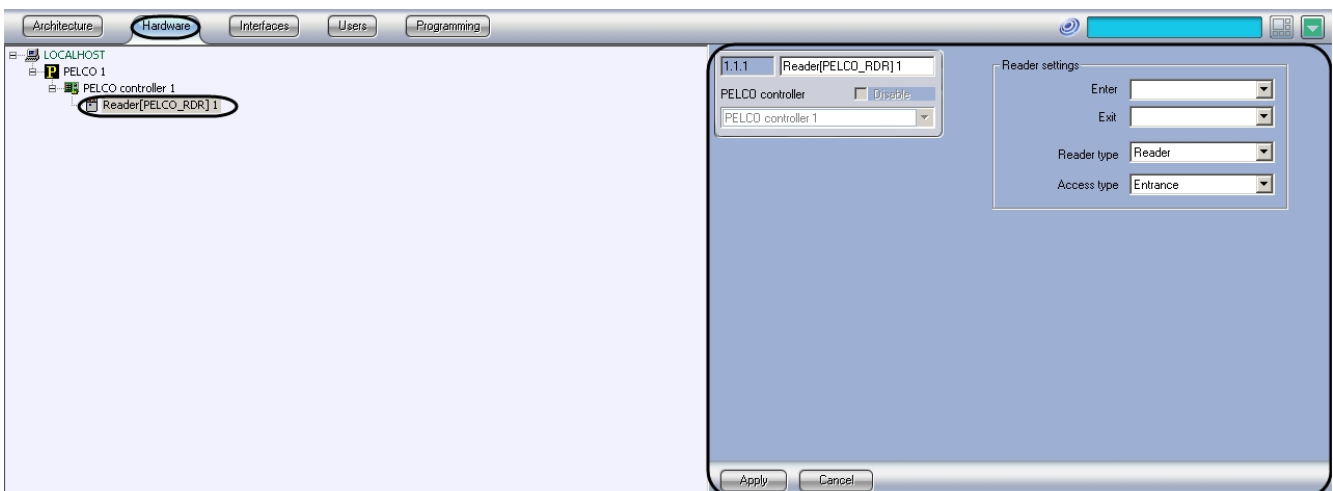
Note.
You may view the controller IP address on the display when you activate the controller (each display corresponds to a number, while the operation of the display is identified with a point in the IP-address). The IP address may be changed using the web-interface controller, for details, see the manufacturer's reference documentation.

- Click the **Apply** button (**3**).

Configuration of the Pelco controller is complete.

Configuring the Pelco reader

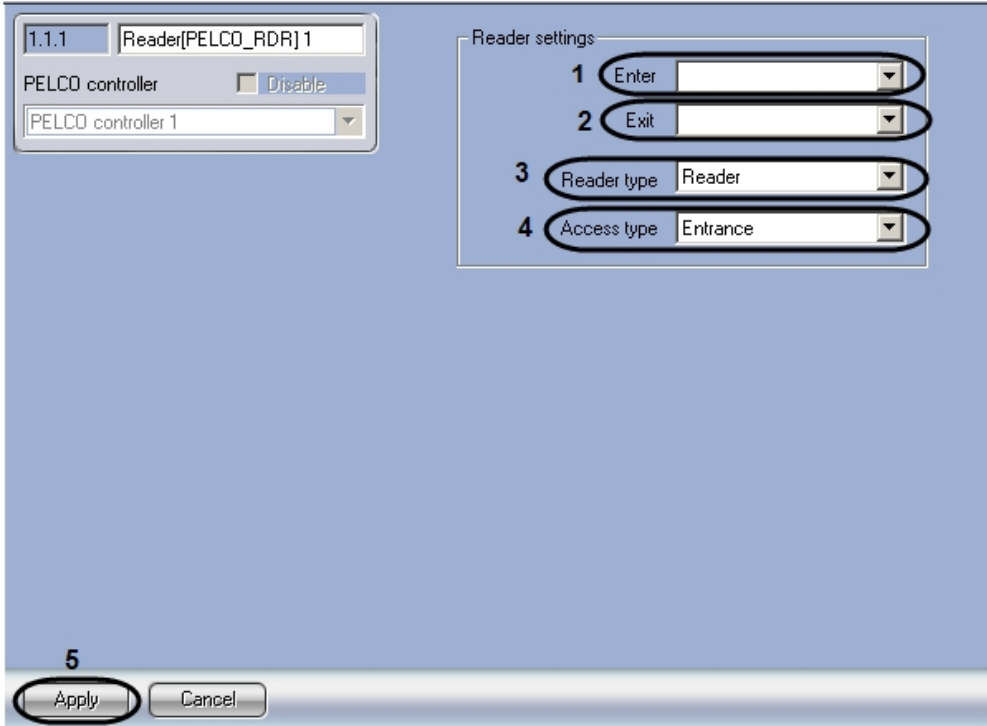
In the *ACFA Intellect* system, configure the *Pelco* reader on the **Pelco Reader** settings panel on the **Hardware** tab of the **System settings** dialog box.



Note.
Pelco controller maintains only two readers. It is impossible to create more than two readers.

To configure the *Pelco* reader, follow these steps:

1. Go to the **Pelco Reader** settings panel.



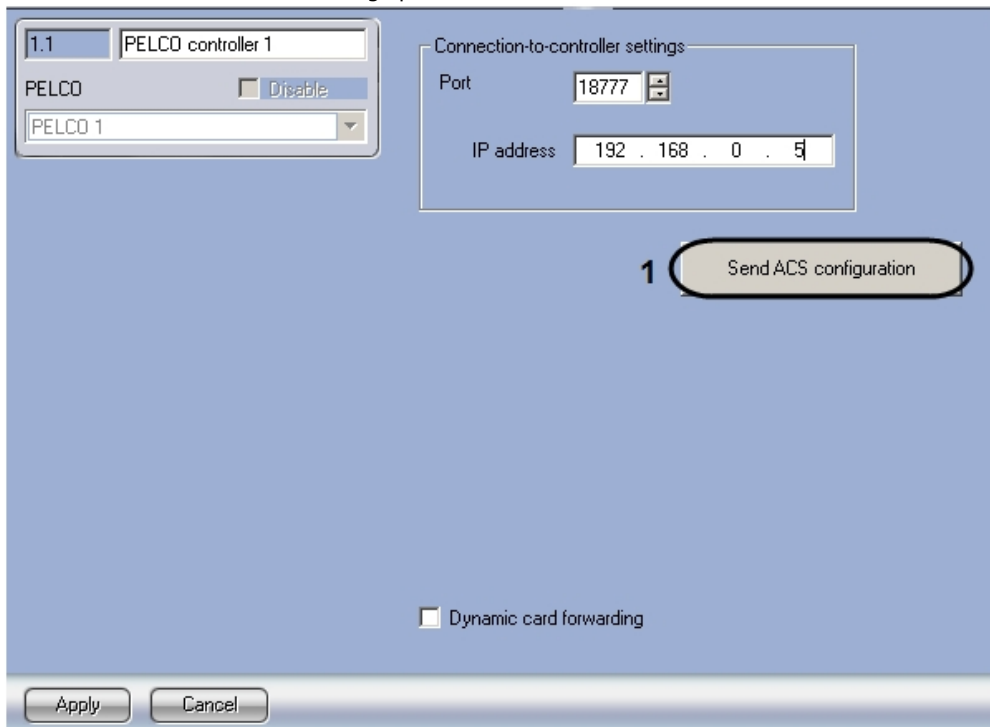
2. From the **Enter** drop-down list select **Region** object corresponding to the area on the reader output side (1).
3. From the **Exit** drop-down list select **Region** object corresponding to the area on the reader input side (2).
4. From the **Reader type** drop-down list, select the reader corresponding to the type being connected (3).
5. From the **Access type** drop-down list, select the type of access performed through the reader: **Enter** or **Exit** (4).
6. Click the **Apply** button (5).

Configuration of the Pelco reader is complete.

Transferring the configuration to the Pelco controller

For transferring the user information entered via the *ACFA Intellect* system or using the *ACS* module, as well as time zones, access levels, and access cards assigned to users, from the system to the *Pelco* controller, the following steps must be carried out:

1. Go to the **Pelco Controller** settings panel.



2. Click on **Send ACS configuration** (1).



Note.

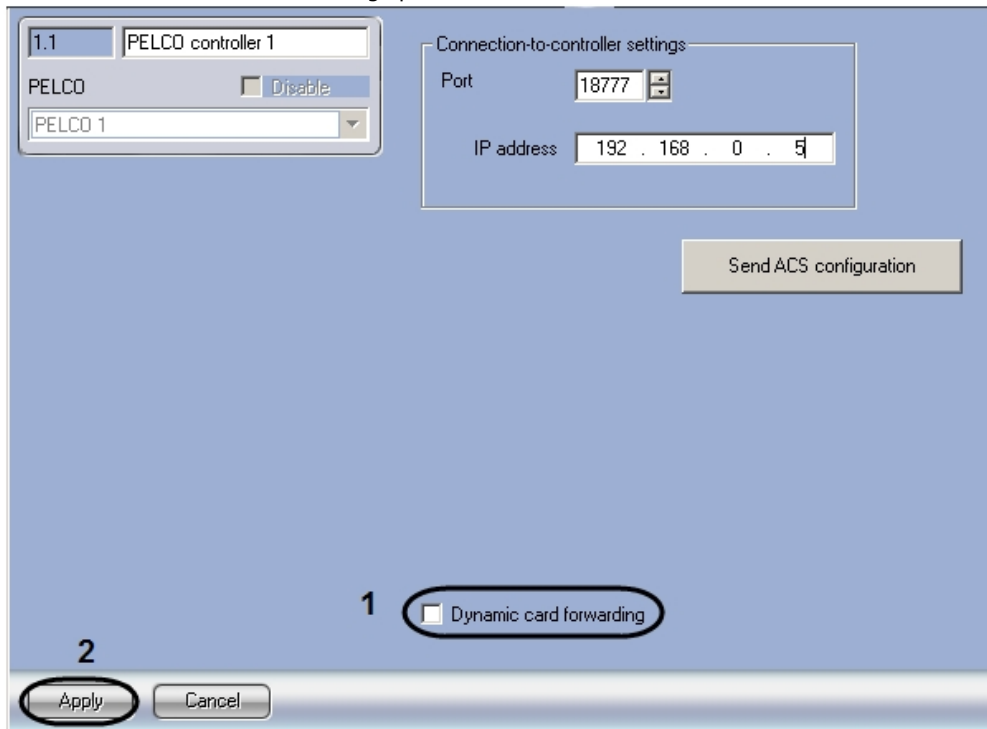
Only those users who are assigned the **Full access** level, or the access level in which the *Pelco* controller reader is selected are sent to the controller. Users with empty fields for **Object code** and **Card** are not transferred to the controller. Details on setting the user access levels can be found in the [Visitor Management System Module Settings and Operation Guide](#).

Transfer of the configuration to the Pelco controller is complete.

Configuring dynamic card forwarding for Pelco ACS

If you would like to dynamically send changes of the user access card information to the controller after they are saved in the *ACFA Intellect* system, follow these steps:

1. Go to the **Pelco Controller** settings panel.



2. **Dynamic card forwarding** (1).
3. Click the **Apply** button (2).

Configuration of dynamic card forwarding is complete.

Operating the Pelco ACS Module

The **Event log** interface object is used to work with the *Pelco ACS* module.

More information on configuring this interface object is provided in the [Intellect™ Software Package Administrator's Guide](#).

Working with the **Event log** interface object is described in detail in the [Intellect™ Software Package Operator's Guide](#).