



# Pelco Integration Module Setup and User Guide

ACFA PSIM 1.1

Last update 01/16/2023

## Table of Contents

<b>1</b>	<b>List of terms used in Pelco Integration Module Setup and User Guide</b> .....	<b>3</b>
<b>2</b>	<b>Introduction into Pelco Integration Module Setup and User Guide</b> .....	<b>4</b>
2.1	Purpose of the document.....	4
2.2	General information about the Pelco ACS module .....	4
<b>3</b>	<b>Supported hardware and licensing of the Pelco integration module</b> .....	<b>5</b>
<b>4</b>	<b>Configuring the Pelco ACS module</b> .....	<b>6</b>
4.1	Configuration procedure for the Pelco ACS module .....	6
4.2	Configuration of the Pelco ACS module.....	6
4.3	Configuring the Pelco controller connection .....	7
4.4	Configuring the Pelco reader.....	8
4.5	Transferring the configuration to the Pelco controller .....	10
4.6	Configuring dynamic card forwarding for Pelco ACS.....	10
<b>5</b>	<b>Operating the Pelco ACS Module</b> .....	<b>12</b>

# 1 List of terms used in Pelco Integration Module Setup and User Guide

The access control system (*ACS*) – the hardware and software system performing the access control functions.

*Axxon PSIM* server – a computer with the *Axxon PSIM* **server** configuration installed.

Controller – a device designed to control personnel entry/exit to limited-access areas, for reading and decoding the access card code, automatic badge registration in the ACS, and performance monitoring.

Time schedule - a set of any number of time intervals during a day (24 hours) defined for several days (1 to 366), and the time intervals during specific dates. Time schedule defines a schedule of access to the secured object.

## 2 Introduction into Pelco Integration Module Setup and User Guide

### On the page:

- Purpose of the document
- General information about the Pelco ACS module

### 2.1 Purpose of the document

This *Manual for installing and operating the Pelco module* is a reference and information tool, designed for specialists, for the installation and operation of the *Pelco* module. This module is included in the access control system (ACS) on the *ACFA PSIM* basis.

This manual includes the following topics:

1. general information about the *Pelco ACS* module;
2. installing the *Pelco ACS* module;
3. operating the *Pelco ACS* module.

### 2.2 General information about the *Pelco ACS* module

The *Pelco* module is an *ACFA PSIM* system ACS component, and is designed to perform the following functions:

1. configure the *Pelco ACS* (made by Infinias)
2. ensure interactivity between the *Pelco ACS* and the *ACFA PSIM* system (monitoring, control).

#### **Note:**

Detailed information on the *Pelco ACS* is available in the official system reference documentation.

Before installing the *Pelco ACS* the following steps should be carried out:

1. Install the *Pelco ACS* hardware onto the protected territory (see the *Pelco ACS* reference documentation).
2. Connect the *Pelco ACS* hardware to the Server.

### 3 Supported hardware and licensing of the Pelco integration module

<b>Manufacturer</b>	Infinias 9340 Priority Way West Drive Indianapolis IN 46240 USA <a href="mailto:sales@infinias.com">sales@infinias.com</a> <a href="mailto:support@infinias.com">support@infinias.com</a> Main Number: 317.348.1086
<b>Integration type</b>	Low-level protocol
<b>Equipment connection</b>	Ethernet

#### Supported equipment

Equipment	Function	Features
eIDC Intelli-M	Access controller	1 door 2 readers Number of cardholders: 64,000 (8,000 in offline mode) Event log: 16,000 254 time zones Communication port: Ethernet

#### Protection

1 IP address, in fact - 1 controller.

## 4 Configuring the Pelco ACS module

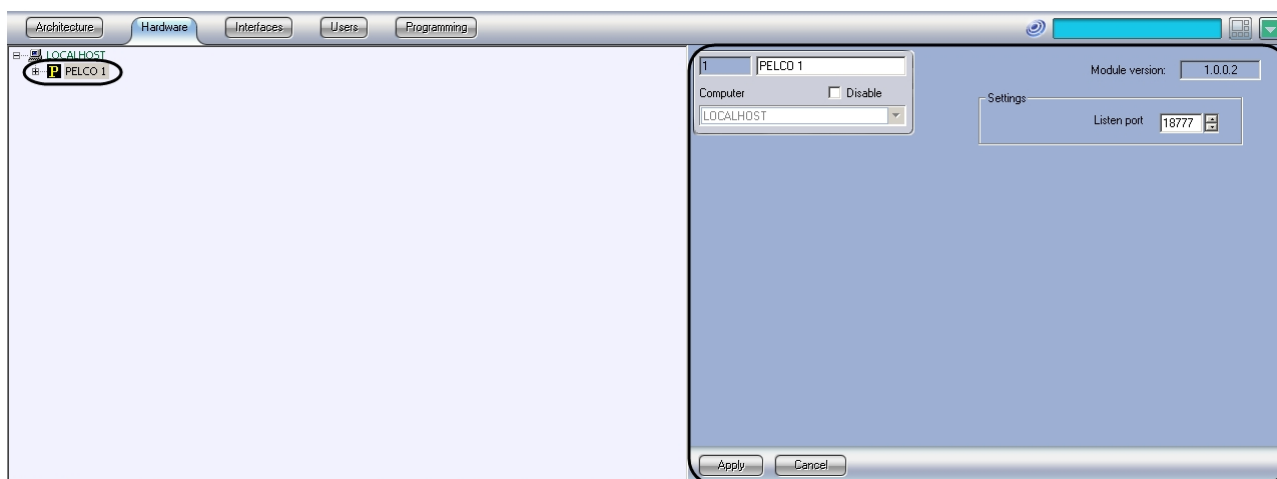
### 4.1 Configuration procedure for the Pelco ACS module

Install the *Pelco ACS* in the following sequence:

1. Activate the *Pelco ACS* module;
2. Configure the *Pelco* controller connection;
3. Configure the *Pelco* readers;
4. Transfer the configuration to the *Pelco* controller;
5. Configure dynamic access card transfer.

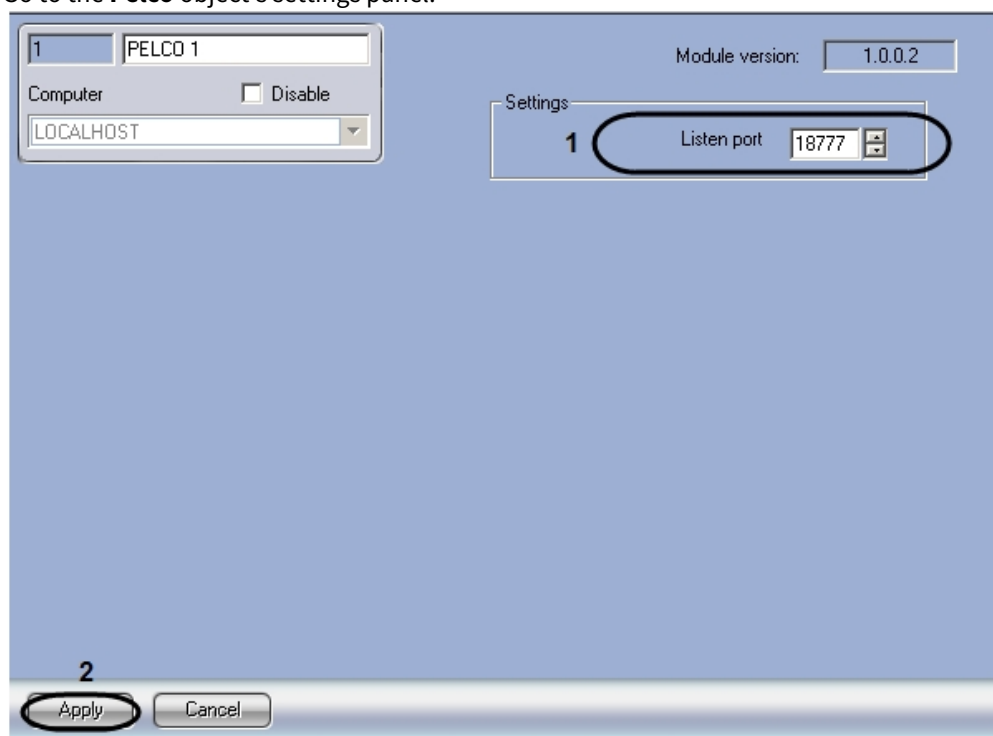
### 4.2 Configuration of the Pelco ACS module

To configure the *Pelco* module go to the *Pelco* object's settings panel. To create this object, go to the **System settings** dialog box, click the **Hardware** tab and select a parent **Computer (LOCALHOST)** object.



To configure the *Pelco ACS* module do the following:

1. Go to the **Pelco** object's settings panel.

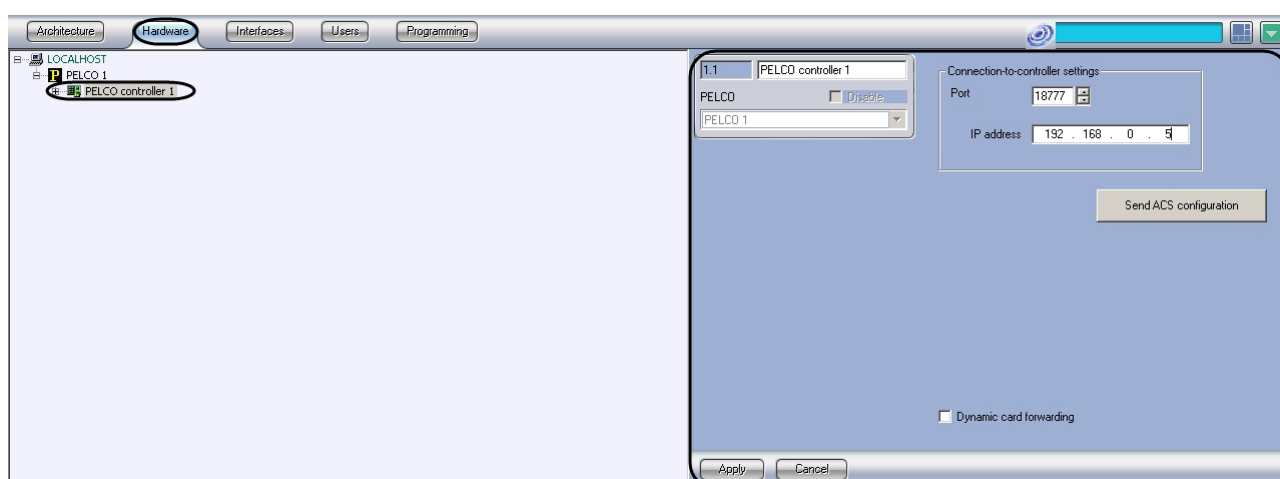


2. Enter the port number for message receiving from Pelco ACS in the **Listen port (1)**.
3. Click the **Apply** button (2).

Configuration of *Pelco* ACS connection is completed.

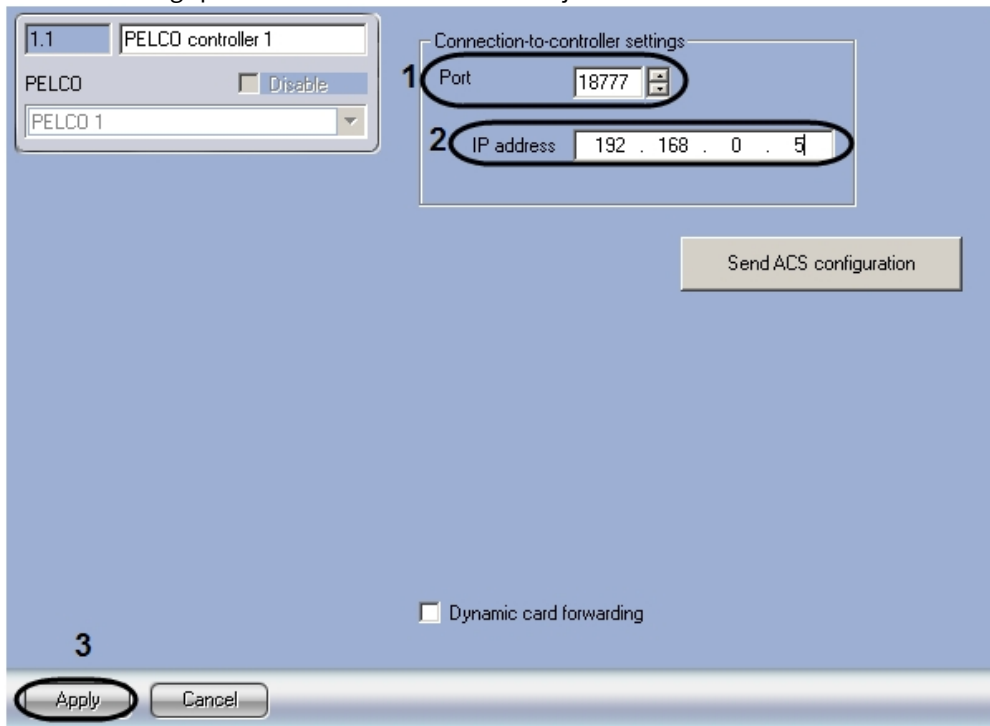
### 4.3 Configuring the Pelco controller connection

In the *ACFA PSIM* system, configure the **Pelco controller** connection on the **Pelco controller** settings panel which is on the **Hardware** tab of the **System settings** dialog box.



To configure the *Pelco* controller connection, follow these steps:

1. Go to the settings panel of the **Pelco Controller** object.



2. In the **Port** field, use the **up and down** buttons to set the connection port for the *Pelco* controller (**1**).

**Note.**

By default, the controller connection port is set to 18777. The connection port may be changed using the web-interface controller. For details, see the manufacturer's reference documentation.

3. In the **IP address** field, assign a mask for the *Pelco* controller IP address (**2**).

**Note.**

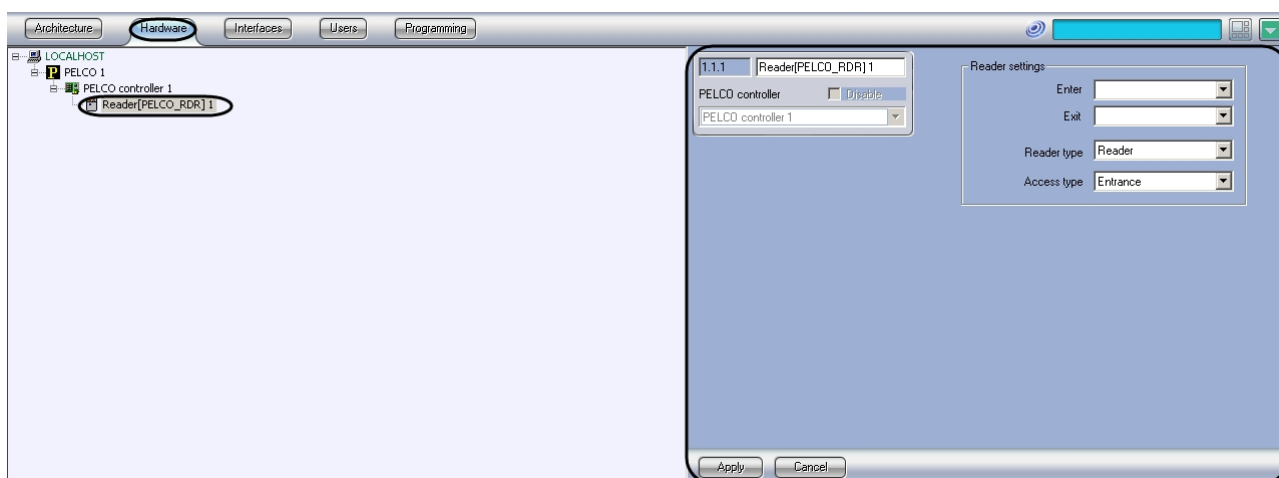
You may view the controller IP address on the display when you activate the controller (each display corresponds to a number, while the operation of the display is identified with a point in the IP-address). The IP address may be changed using the web-interface controller, for details, see the manufacturer's reference documentation.

4. Click the **Apply** button (**3**).

Configuration of the Pelco controller is complete.

## 4.4 Configuring the Pelco reader

In the *ACFA PSIM* system, configure the *Pelco* reader on the **Pelco Reader** settings panel on the **Hardware** tab of the **System settings** dialog box.

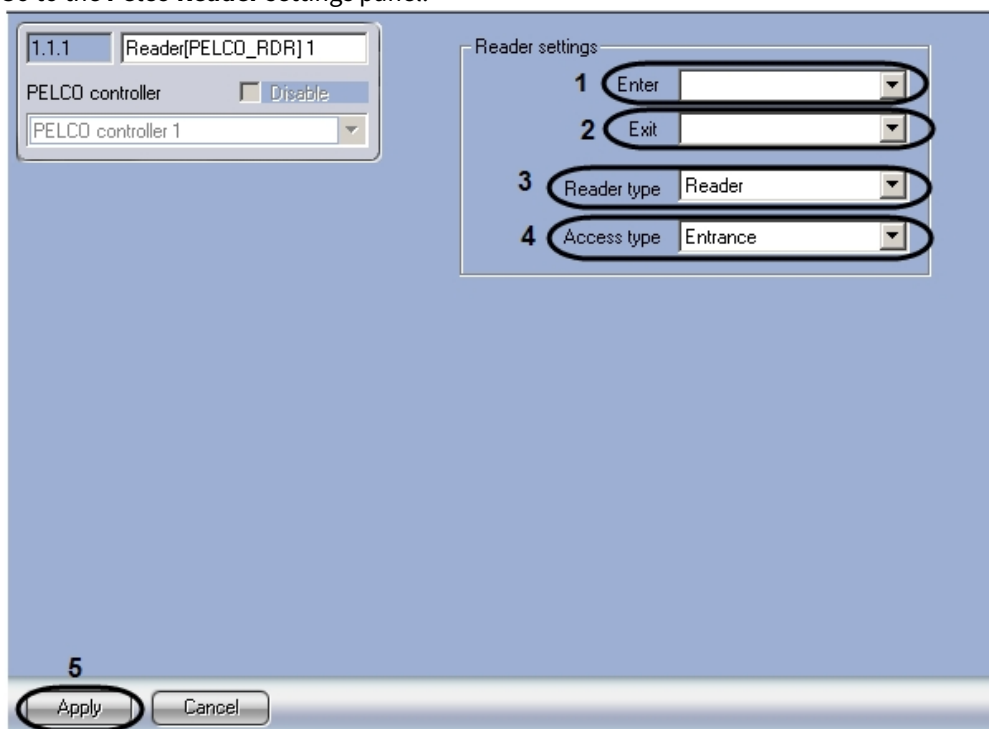


**Note.**

Pelco controller maintains only two readers. It is impossible to create more than two readers.

To configure the *Pelco* reader, follow these steps:

1. Go to the **Pelco Reader** settings panel.



2. From the **Enter** drop-down list select **Region** object corresponding to the area on the reader output side (1).
3. From the **Exit** drop-down list select **Region** object corresponding to the area on the reader input side (2).
4. From the **Reader type** drop-down list, select the reader corresponding to the type being connected (3).
5. From the **Access type** drop-down list, select the type of access performed through the reader: **Enter** or **Exit** (4).
6. Click the **Apply** button (5).

Configuration of the Pelco reader is complete.

## 4.5 Transferring the configuration to the Pelco controller

For transferring the user information entered via the *ACFA PSIM* system or using the *ACS* module, as well as time zones, access levels, and access cards assigned to users, from the system to the *Pelco* controller, the following steps must be carried out:

1. Go to the **Pelco Controller** settings panel.

2. Click on **Send ACS configuration (1)**.

### **Note.**

Only those users who are assigned the **Full access** level, or the access level in which the *Pelco* controller reader is selected are sent to the controller. Users with empty fields for **Object code** and **Card** are not transferred to the controller. Details on setting the user access levels can be found in the [Visitor Management System Module Settings and Operation Guide](#).

Transfer of the configuration to the Pelco controller is complete.

## 4.6 Configuring dynamic card forwarding for Pelco ACS

If you would like to dynamically send changes of the user access card information to the controller after they are saved in the *ACFA PSIM* system, follow these steps:

1. Go to the **Pelco Controller** settings panel.

1.1 PELCO controller 1

PELCO  Disable

PELCO 1

Connection-to-controller settings

Port 18777

IP address 192 . 168 . 0 . 5

Send ACS configuration

1  Dynamic card forwarding

2

2. **Dynamic card forwarding (1).**
3. Click the **Apply** button (2).

Configuration of dynamic card forwarding is complete.

## 5 Operating the Pelco ACS Module

The **Event Viewer** interface object is used to work with the *Pelco ACS* module.

More information on configuring this interface object is provided in the [Axxon PSIM Software Package: Administrator's Guide](#).

Working with the **Event Viewer** interface object is described in detail in the [Axxon PSIM Software Package: Operator's Guide](#).