



Rosslare Integration Module Configuration and Operation Manual

ACFA PSIM 1.1

Last update 05/06/2024

Table of Contents

1	List of terms used in Rosslare Integration Module Configuration and Operation Manual	3
2	Introduction into Rosslare Integration Module Configuration and Operation Manual	4
2.1	Purpose of document	4
2.2	General information about Rosslare ACS integration module	4
3	Configuration of Rosslare integration module	5
3.1	Procedure for configuring of Rosslare integration module	5
3.2	Activation of Rosslare integration module	5
3.3	Configuration of Rosslare connection with Axxon PSIM Server	5
3.3.1	Configuration of Rosslare connection through COM-port	6
3.3.2	Configuration of Rosslare connection through TCP/IP	7
3.4	Configuration of Rosslare controller	7
3.5	Configuration of Rosslare access points	9
3.5.1	Configuration of Rosslare entrances	9
3.5.2	Configuration of Rosslare exits	10
3.5.3	Configuration of Rosslare doors	11
3.5.4	Configuration of Rosslare readers	13
3.5.5	Configuration of Rosslare events connection	15
3.6	Configuration of Rosslare siren	16
3.7	Configuration of Rosslare user settings	17
3.8	Data recording to Rosslare devices	19
4	Operation of the Rosslare integration module	20
4.1	General information on operation of the Rosslare module	20
4.2	Control over Rosslare door	20
4.3	Control over Rosslare entrances	20
4.4	Control over Rosslare exits	21
4.5	Control over Rosslare siren	21

1 List of terms used in Rosslare Integration Module Configuration and Operation Manual

Access control system (ACS) is a hardware-software complex for carrying out access control functions.

Rosslare ACS integrated system is a system that is a software-hardware union. The system aims at solving security problems on all sorts of objects.

Configuration is a set of configurations for equipment connected to AC-215 controller. It is also a set of configurations for user lists, time zones and access levels.

Axxon PSIM server is a computer with installed **Server** configuration of *Axxon PSIM* software package.

Controller is an electronic device for control over access points.

Readers are electronic devices for keyboard inputting the stored code or for reading code information from system keys (identifiers).

Access point is a place where there is access control. Access point can be performed by the door, turnstile, gates, barrier that are equipped by reader, electromechanical lock and other means of access control.

Access time is time that is for passing through the access point in a normal mode of operation. After a lapse of this time the access point is automatically blocked.

Anti-passback is a control over access order (protection from repeated use of identifier to pass in one direction).

PIN-code is an additional user identifier that is keyboard input.

Keyboard is a device used for remote control over controller zones.

Time schedule - a set of any number of time intervals during a day (24 hours) defined for several days (1 to 366), and the time intervals during specific dates. Time schedule defines a schedule of access to the secured object.

2 Introduction into Rosslare Integration Module Configuration and Operation Manual

On the page:

- Purpose of document
- General information about Rosslare ACS integration module

2.1 Purpose of document

Configuration and operation manual for the Rosslare integration module is an informational reference manual intended for use by configuration specialists and operators of the *Rosslare* module. This module is a part of the access control system (ACS) implemented with the *ACFA PSIM software package*.

This Guide contains the following materials:

1. general information on the *Rosslare ACS* integration module;
2. configuration of the *Rosslare ACS* integration module;
3. operation of the *Rosslare ACS* integration module.

2.2 General information about Rosslare ACS integration module

Rosslare integration module is a component of ACS that is carried out on the basis of *ACFA PSIM* software package. It is for realization of the following functions:

1. *Rosslare ACS* configuration (Rosslare LLC is a vendor);
2. providing interaction between *Rosslare ACS* and *ACFA PSIM* (monitoring, control).

Note.

For more information on *Rosslare ACS* refer to the official documentation on this system.

Before configuration of *Rosslare ACS* integration module do the following:

1. Install *Rosslare ACS* hardware on the guarded object (see the reference documentation on *Rosslare ACS*).
2. Connect *Rosslare ACS* to the Server.
3. Install the drivers on the Server in order to connect to *Rosslare ACS* (are available on the vendor's website).

3 Configuration of Rosslare integration module

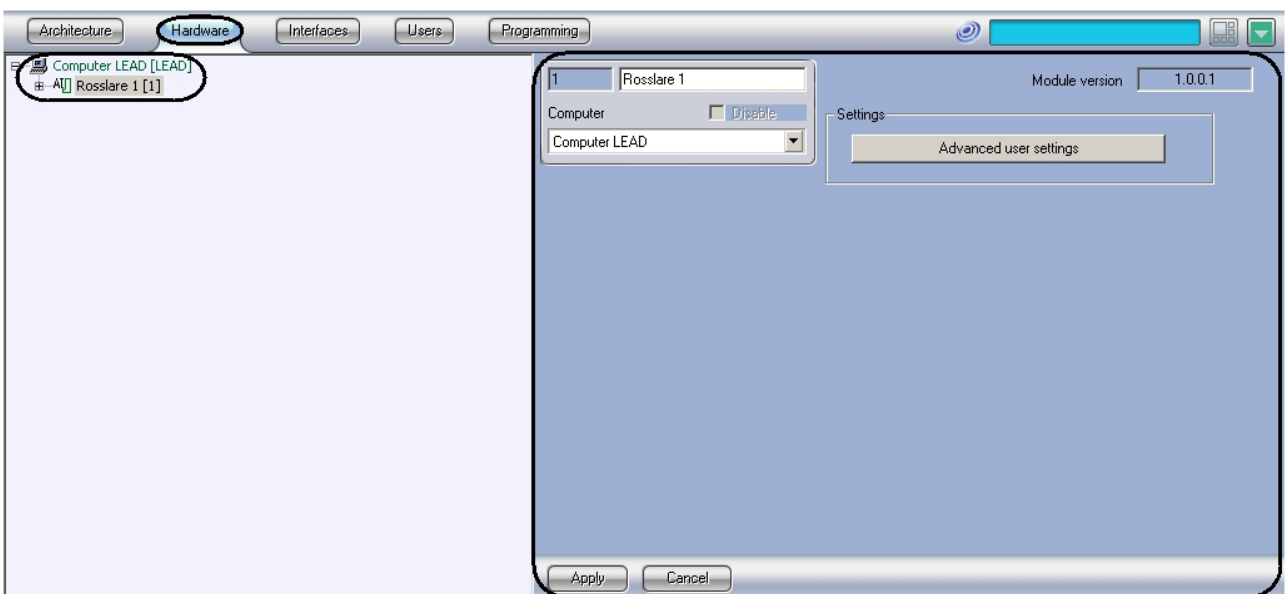
3.1 Procedure for configuring of Rosslare integration module

Rosslare ACS integration module is configured through the following steps:

1. Activation of *Rosslare* integration module;
2. Configuration of *Rosslare* connection to the Server of *ACFA PSIM* software package;
3. Configuration of *Rosslare* controller;
4. Configuration of *Rosslare* access point;
5. Configuration of *Rosslare* siren;
6. Configuration of *Rosslare* user settings;
7. Data recording to *Rosslare* devices.

3.2 Activation of Rosslare integration module

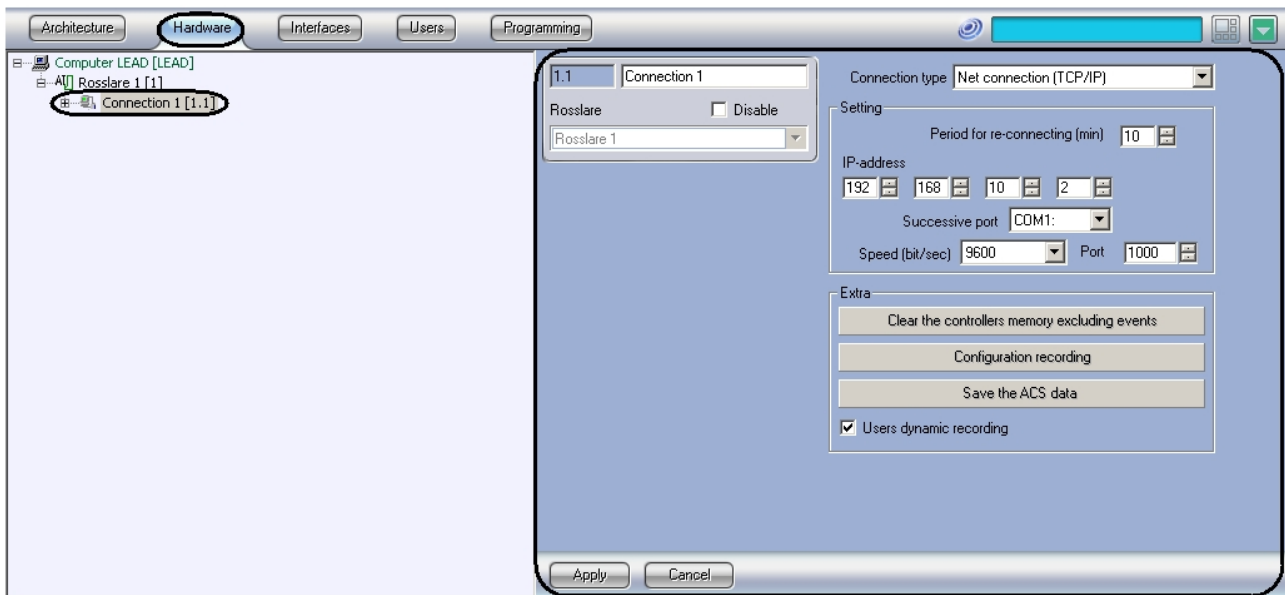
In order to activate Rosslare integration module it's necessary to create the **Rosslare** object on the basis of the **Computer** object on the **Hardware** tab of the **System settings** dialog box.



Activation of *Rosslare* integration module is complete.

3.3 Configuration of Rosslare connection with Axxon PSIM Server

Configuration of Rosslare connection to *ACFA PSIM* software package is performed through the **Connection** object that is created on the **Hardware** tab of the **System settings** dialog box.



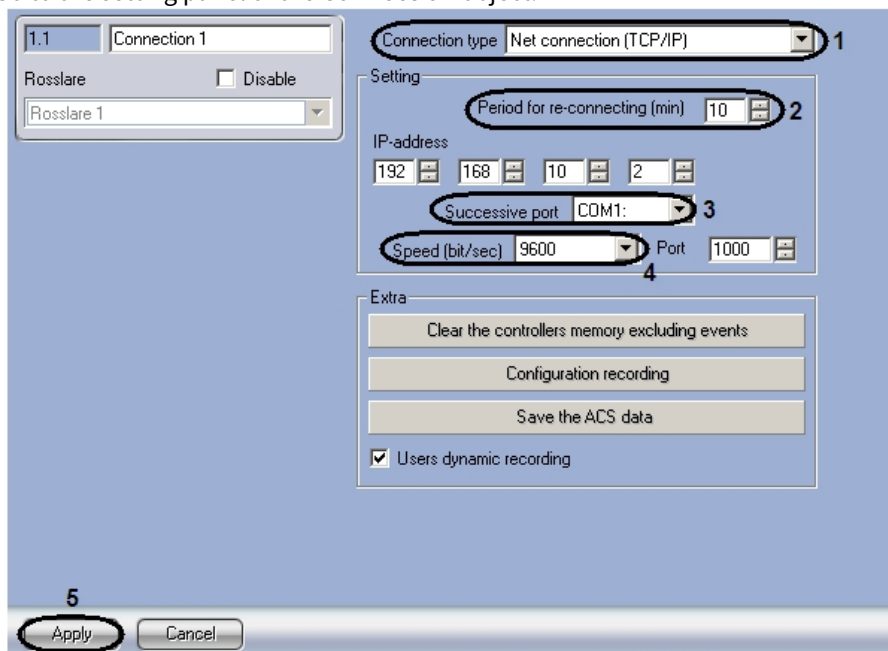
There are two ways of *Rosslare* connection with *Axxon PSIM* Server:

1. Through COM–port;
2. Through TCP/IP.

3.3.1 Configuration of Rosslare connection through COM-port

To configure Rosslare connection through COM–port do the following:

1. Go to the setting panel of the **Connection** object.



2. From the **Connection type** dropdown list select the connection through COM–port (1).
3. In the **Period for re-connecting (min)** field using **up-down** keys set the time (in minutes) during which the attempts to re-connect with *Axxon PSIM* Server will be made (2).

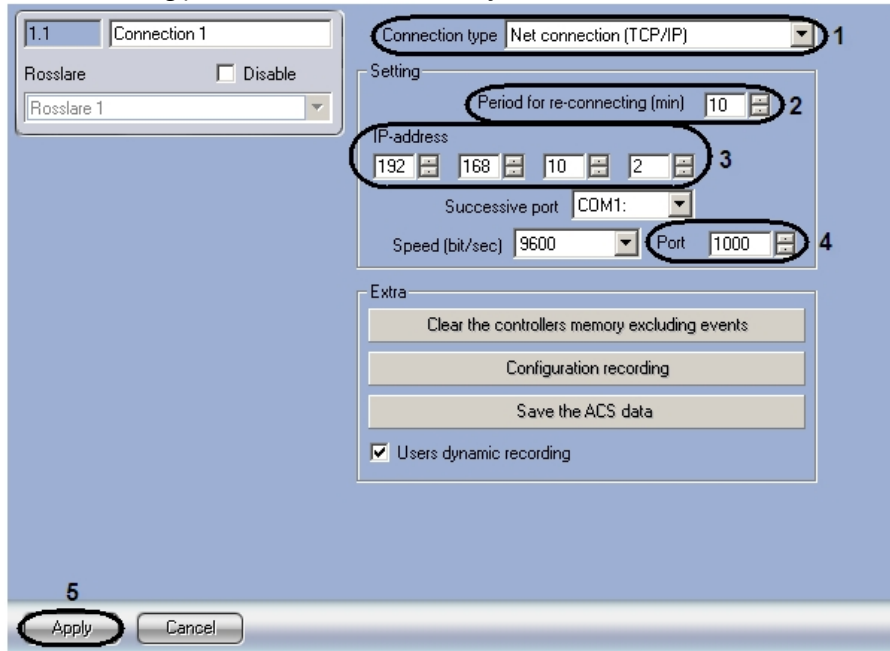
4. From the **Sucessive port** dropdown list select COM–port through which there will be the connection with *Axxon PSIM* Server (3).
5. From the **Speed** dropdown list select the speed of data exchange through COM–port (4).
6. To save changes click **Apply** (5).

Configuration of Rosslare connection through COM–port is completed.

3.3.2 Configuration of Rosslare connection through TCP/IP

To configure Rosslare connection through TCP/IP do the following:

1. Go to the setting panel of the **Connection** object.

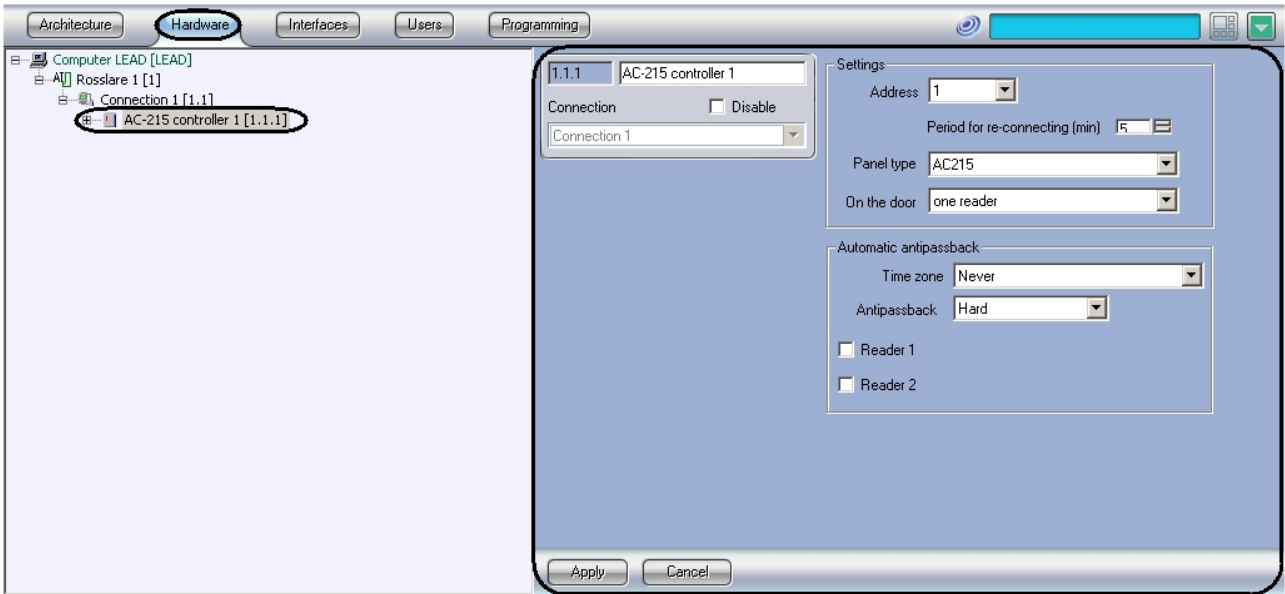


2. From the **Connection type** dropdown list select the connection through TCI/IP (1).
3. In the **Period for re-connecting (min)** field using **up-down** keys set the time (in minutes) during which the attempts to re-connect with *Axxon PSIM* Server will be made (2).
4. In the **IP-address** field using **up-down** keys set the IP-address of *Rosslare* connection (3).
5. In the **Port** field using **up-down** keys set the number of *Rosslare* connection port (4).
6. To save changes click **Apply** (5).

Configuration of Rosslare connection through TCP/IP is completed.

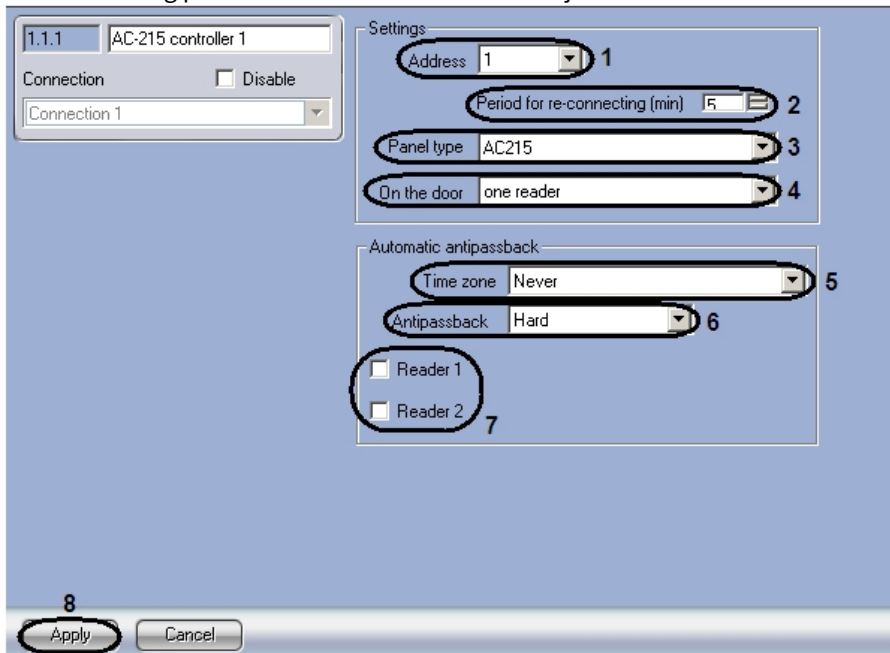
3.4 Configuration of Rosslare controller

In *ACFA PSIM* software package the **AC–215 controller** object corresponds to *Rosslare* controller. This object is created on the basis of the **Connection** object on the **Hardware** tab of the **System settings** dialog box.



To configure AC–215 controller do the following:

1. Go to the setting panel of the **AC–215 controller** object.



2. From the **Address** dropdown list select the vacant controller address in the range from 1 to 32 (1).
3. In the **Period for re-connecting (min)** field using **up-down** keys set the time (in minutes) during which the attempts to re-connect with AC–215 controller will be made (2).
4. From the **Panel type** dropdown list select type of the panel in use (3).
5. From the **On the door** dropdown list select the number of readers on one door (4).
6. From the **Time zone** dropdown list select time zone in order to control the double pass (5).
7. From the **Antipassback** dropdown list select the control mode of double pass through the readers (6).

Pass mode	Description

Hard	If pass procedure is violated when the double pass is controlled then user access is forbidden and alarm is transmitted to the computer.
Soft	If pass procedure is violated when the double pass is controlled then user access is allowed and alarm is transmitted to the computer.

8. In order to control the double pass set the checkboxes opposite corresponding readers (7).
9. To save changes click **Apply** (8).

Configuration of *Rosslare* controller is completed.

3.5 Configuration of Rosslare access points

Program models of the following devices are supported in *Rosslare* ACS:

1. Door with one-sided access control.
2. Door with double-sided access control.

For correct operation of ACS equipment it's necessary to configure access points (door) and devices belonging to them – readers, entrances, exits.

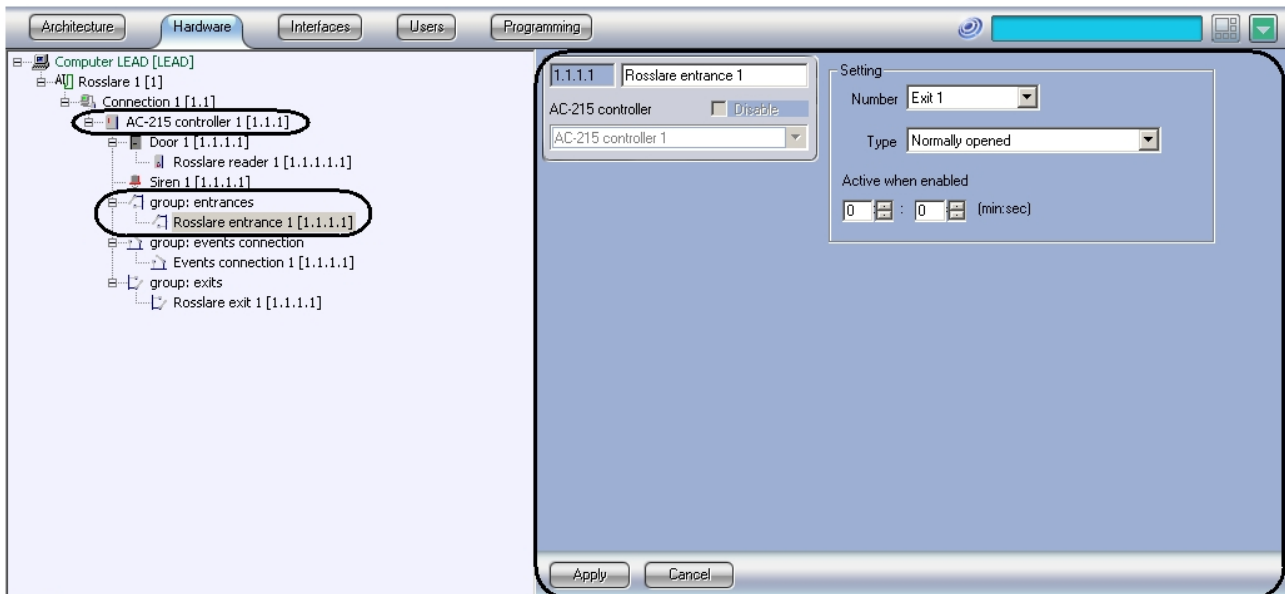
AC-215 controller can serve either one double-sided door or two doors with one-sided access control.

Note.

One can create unlimited quantity of the **Door** objects, but only those that have an address will function (**Number** parameter).

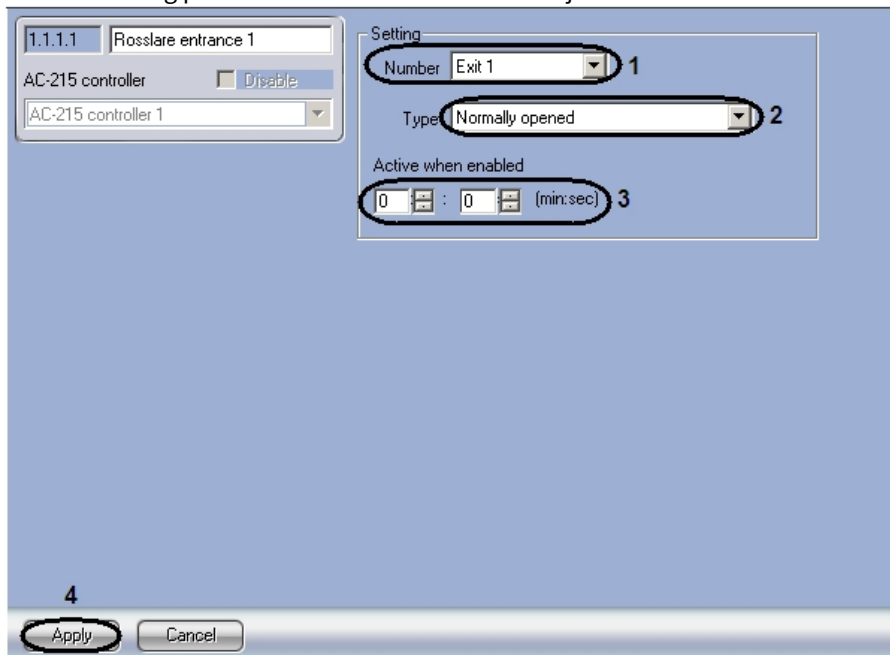
3.5.1 Configuration of Rosslare entrances

Configuration of AC-215 controller entrances is performed on the setting panel of the **Rosslare entrance** object. This object is created on the basis of the **AC-215 controller** object on the **Hardware** tab of the **System settings** dialog box.



To configure AC-215 controller entrances do the following:

1. Go to the setting panel of the **Rosslare entrance** object.

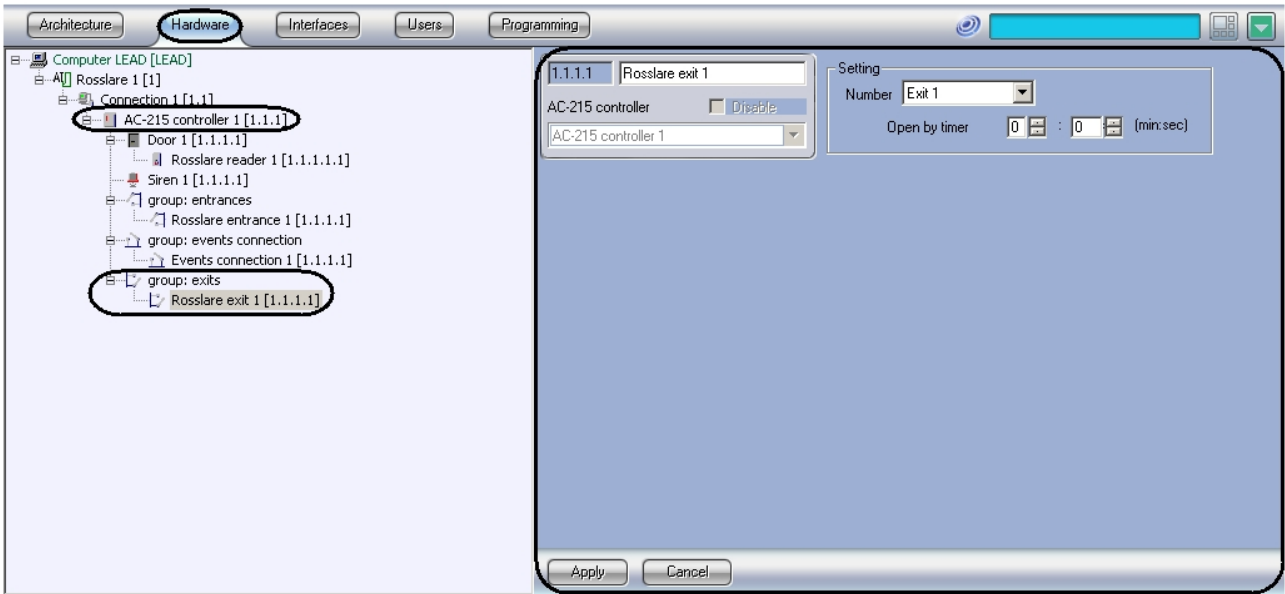


2. From the **Number** dropdown list select the number of exit (**1**).
3. From the **Type** dropdown list select the corresponding type of the exit that is used (**2**).
4. In the **Active when enabled** field using **up-down** keys set the time (in minutes and seconds) during which the entrance is possible (**3**).
5. To save changes click **Apply** (**4**).

Configuration of entrances is completed.

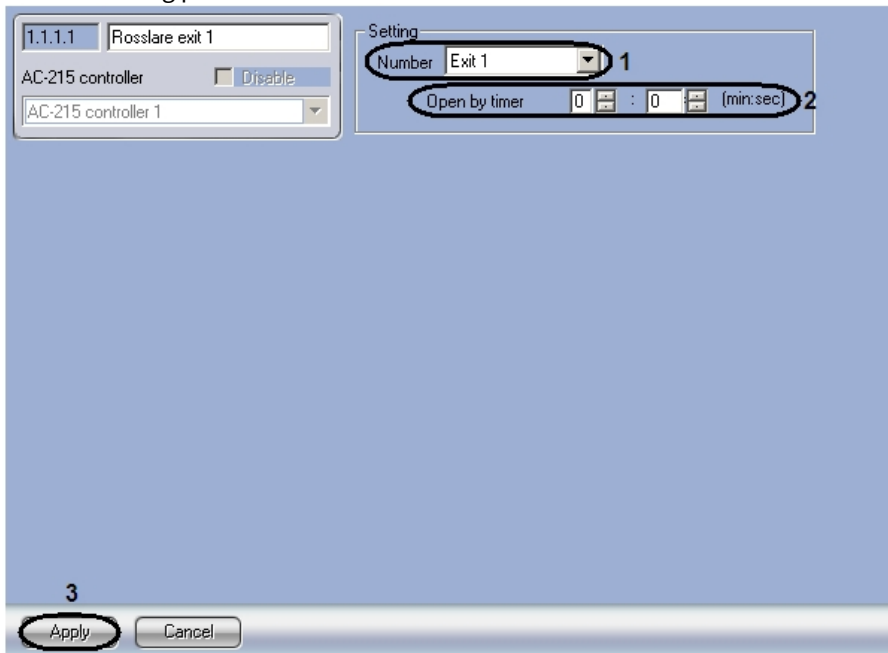
3.5.2 Configuration of Rosslare exits

Configuration of AC-215 controller exits is performed on the setting panel of the **Rosslare exit** object. This object is created on the basis of the **AC-215 controller** object on the **Hardware** tab of the **System settings** dialog box.



To configure AC-215 controller exits do the following:

1. Go to the setting panel of the **Rosslare exit**.

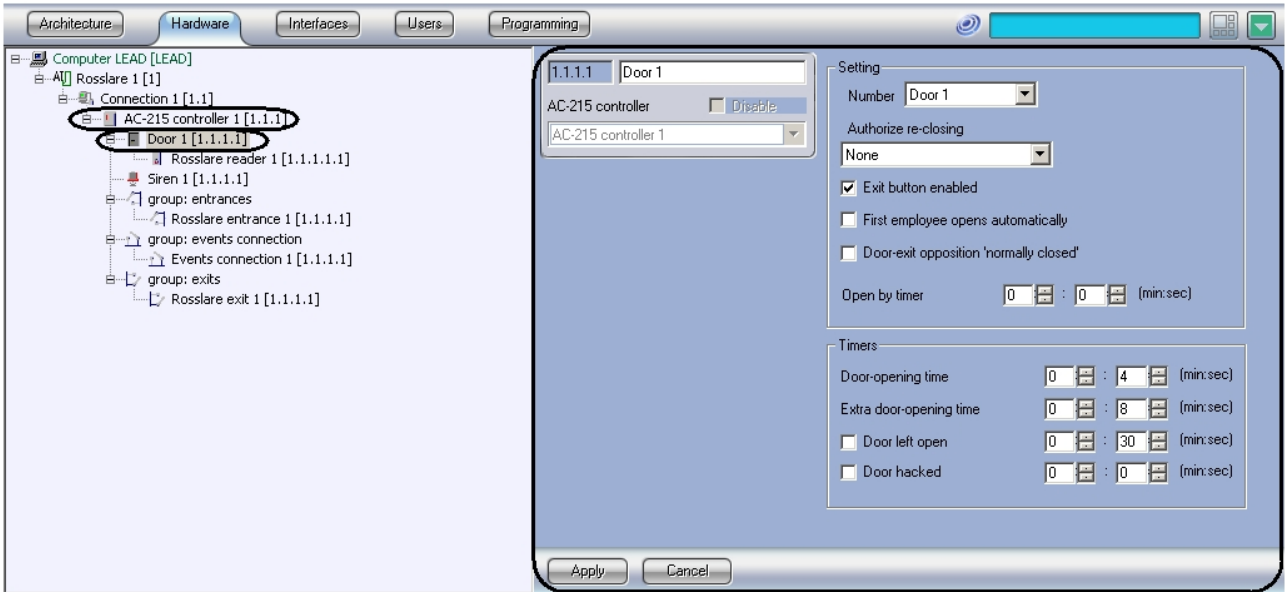


2. From the **Number** dropdown list select the number of exit (**1**).
3. In the **Open by timer** field using **up-down** keys set the time (in minutes and seconds) during which the door is open (**2**).
4. To save changes click **Apply** (**3**).

Configuration of exits is completed.

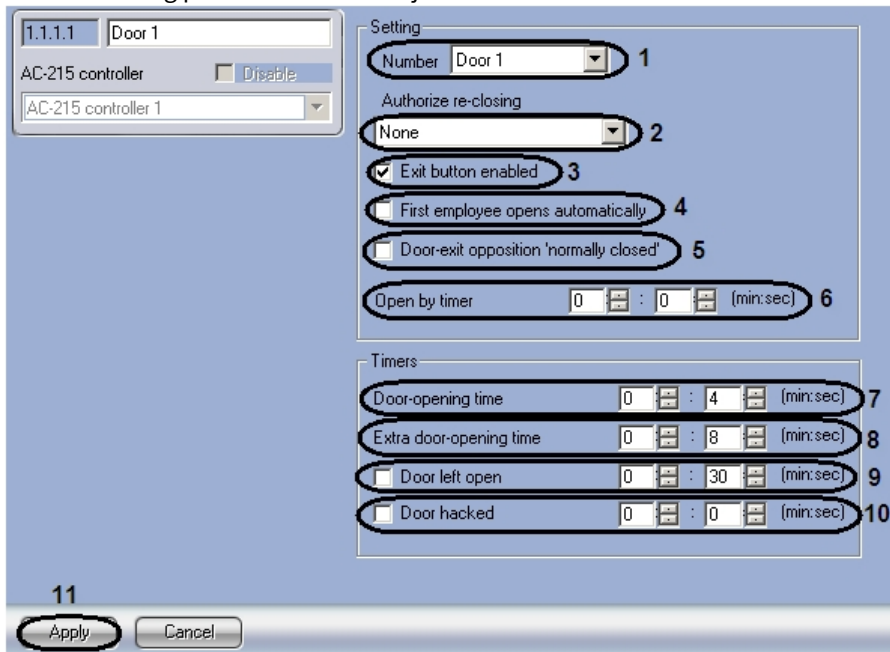
3.5.3 Configuration of Rosslare doors

Configuration of AC-215 controller doors is performed on the setting panel of the **Door** object. This object is created on the basis of the **AC-215 controller** object on the **Hardware** tab of the **System settings** dialog box.



To configure AC-215 controller doors do the following:

1. Go to the setting panel of the **Door** object.



2. From the **Number** dropdown list select the door address (1).
3. From the **Authorize re-closing** dropdown list select the door-closing mode (2).

Operation mode	Description of operation mode
No	Lock opens for programmed period
Door monitoring is closed	Lock timer stops after door-closing

Door monitoring is open

Lock timer stops after door-opening

4. To enable the exit button set the **Exit button enabled** checkbox. (3).
5. To enable the automatic door opening after the first incoming user set the **First employee opens automatically** checkbox (4).
6. To activate the exit mode set the **Door-exit opposition 'normally closed'** checkbox (5).
7. In the **Open by timer** field using **up-down** keys set the time (in minutes and seconds) at the expiration of which the door opens (6).
8. In the **Door-opening time** field using **up-down** keys set the time (in minutes and seconds) during which the lock is open (7).
9. In the **Extra door-opening time** field using **up-down** keys set the extra time period (in minutes and seconds) during which the door may be open (8).
10. Set the **Door left open** checkbox and using **up-down** keys set the time (in minutes and seconds) during which the door may be open (9).
11. Set the **Door hacked** checkbox and using **up-down** keys set the time (in minutes and seconds) at the expiration of which the door is considered to be hacked (10).
12. To save changes click **Apply** (11).

Configuration of doors is completed.

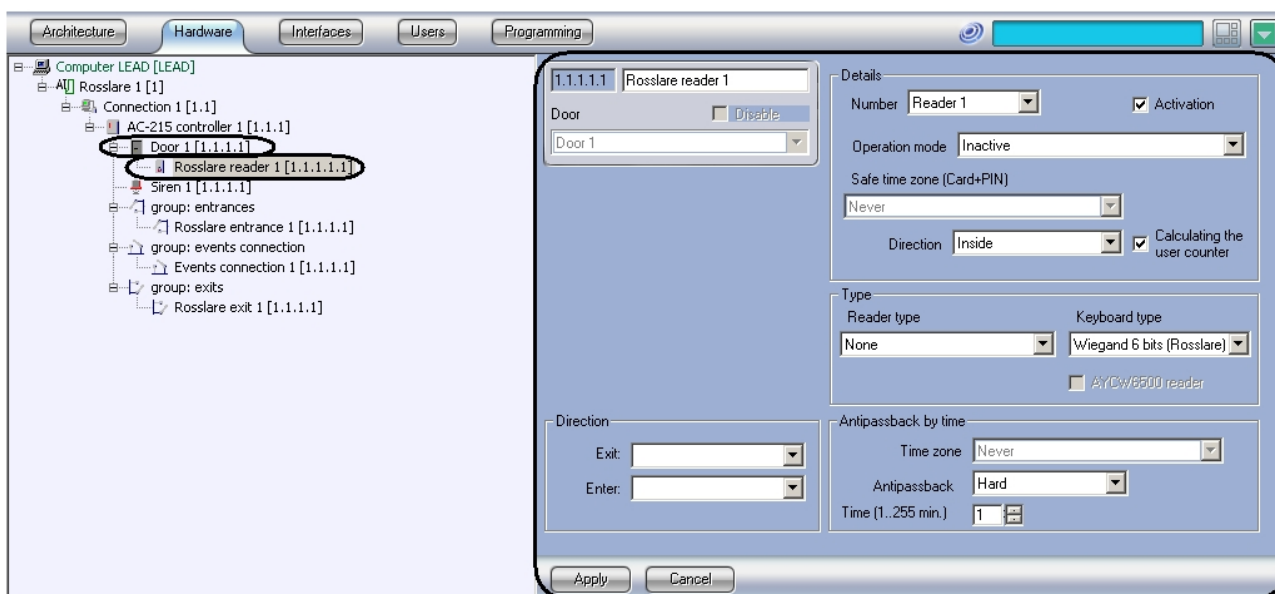
3.5.4 Configuration of Rosslare readers

AC-215 controller can service no more than two readers.

Note.

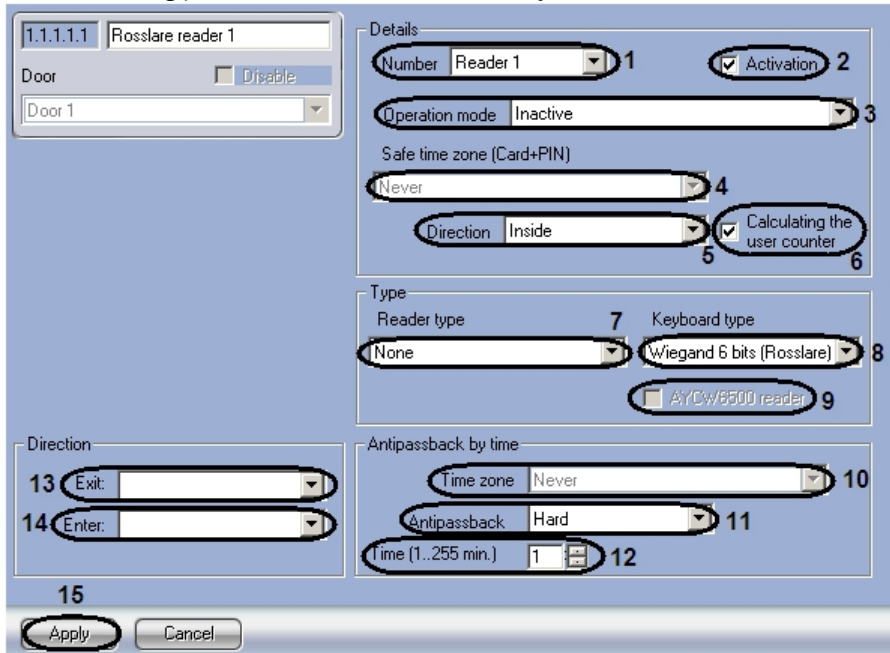
One can create the unlimited number of the **Reader** objects, but only those that has the address will function (the **Number** parameter).

Configuration of AC-215 controller readers is performed on the setting panel of the **Rosslare reader** object. This object is created on the basis of the **Door** object on the **Hardware** tab of the **System settings** dialog box.



To configure readers do the following:

1. Go to the setting panel of the **Rosslare reader** object.



2. From the **Number** dropdown list select the corresponding reader (1).
3. For reader activation set the **Activation** checkbox (2).
4. From the **Operation mode** dropdown list select the mode of reader operation (3).

Operation mode	Description
Inactive	Reader is inactive
Card only	Access is given only by access card
PIN only	Access is given only by PIN code
Card or PIN	Access is given by access card or by PIN code
Forbidden access mode	Access is forbidden for everyone

5. From the **Safe time zone (Card+PIN)** dropdown list select the time zone for reader operation (4).
6. From the **Direction** dropdown list select the direction of reading the pass point (5).

Note.
It's necessary to select **Inside** direction if the reader is the exit for the pass point which it belongs to.

7. To calculate the user counter set the **Calculating the user counter** checkbox (6).
8. From the **Reader type** dropdown list select the access card format (7).

Note.

For Rosslare readers set **Wiegand26** format.

9. From the **Keyboard type** dropdown list select the type of reader keyboard (8).

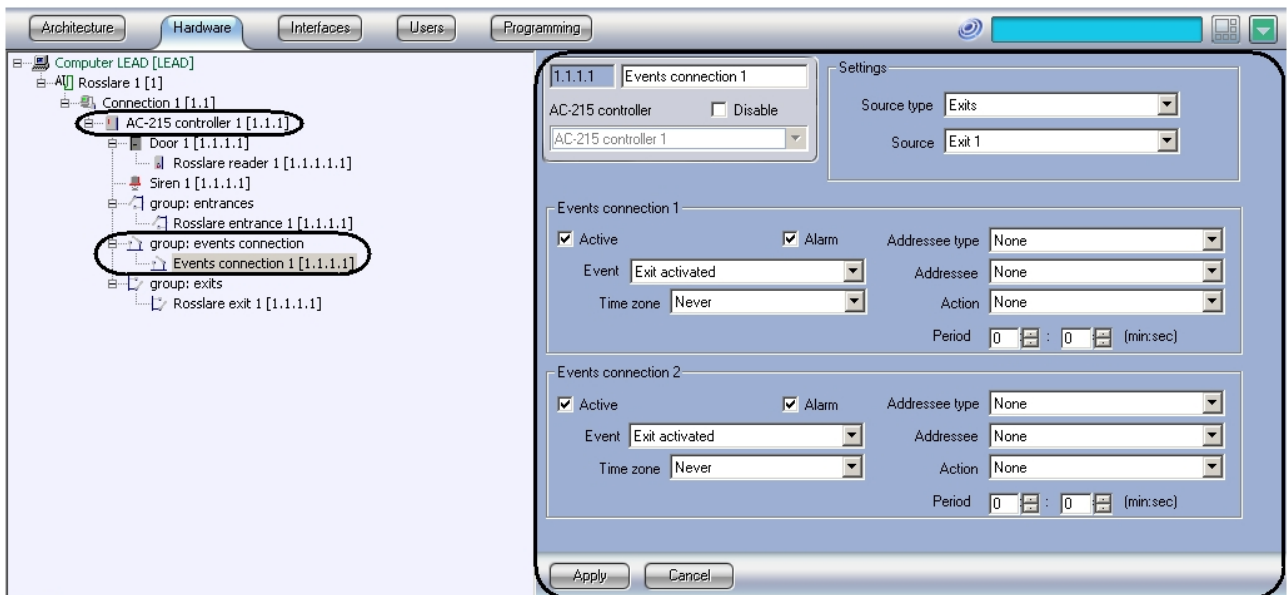
Note.
For Rosslare readers set **Wiegand 6 bit Rosslare** format.

10. To activate AYCW6500 reader set the **AYCW6500** checkbox (9).
11. From the **Time zone** dropdown list select the time zone for double pass control (10).
12. From the **Antipassback** dropdown list select the mode for double pass control (11).
13. In the **Time (1..255 min.)** field using **up-down** keys set the time of double pass control without selecting the time zone in minutes (12).
14. From the **Exit** dropdown list select the **Division** object that corresponds to the territory and is on the entrance side to the reader (13).
15. From the **Enter** dropdown list select the **Division** object that corresponds to the territory and is on the exit side to the reader (14).
16. To save changes click **Apply** (15).

Configuration of readers is completed.

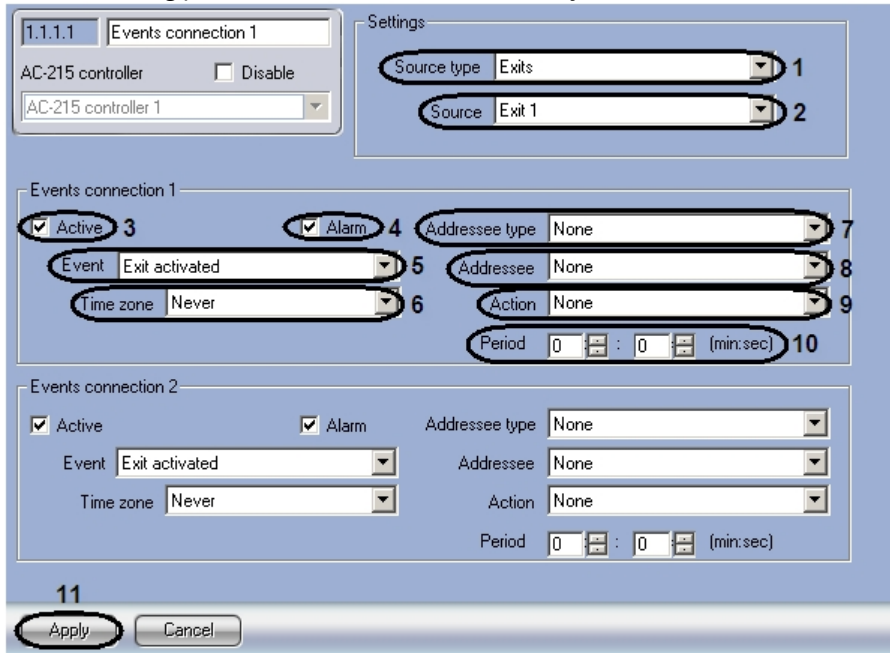
3.5.5 Configuration of Rosslare events connection

Configuration of AC-215 controller events connection is performed on the setting panel of the Events connection object. This object is created on the basis of the AC-215 controller object on the Hardware tab of the System settings dialog box.



To configure AC-215 controller events connection do the following:

1. Go to the setting panel of the **Events connection** object.

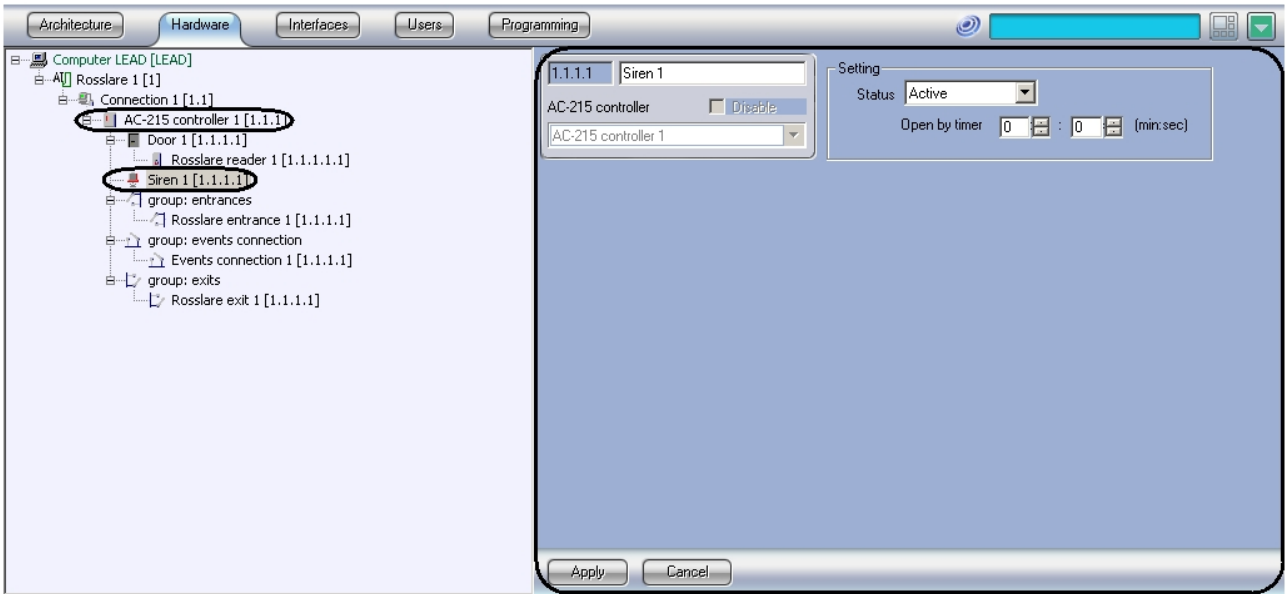


2. From the **Source type** dropdown list select the type of events source-object (1).
3. From the **Source** dropdown list select the event source-object (2).
4. To activate events connection set the **Active** checkbox (3).
5. To trigger the alarm on the event set the **Alarm** checkbox (4).
6. From the **Event** dropdown list select the event to which the executor object reacts (5).
7. From the **Time zone** dropdown list select the time zone for the action on event (6).
8. From the **Addressee type** dropdown list select the type of executor object (7).
9. From the **Addressee** dropdown list select the executor object (8).
10. From the **Action** dropdown list select the action of the executor object (9).
11. In the **Period** field using **up-down** keys set the time period during which the action of executor object is carried out (10).
12. To save changes click **Apply** (11).

Configuration of events connection is completed.

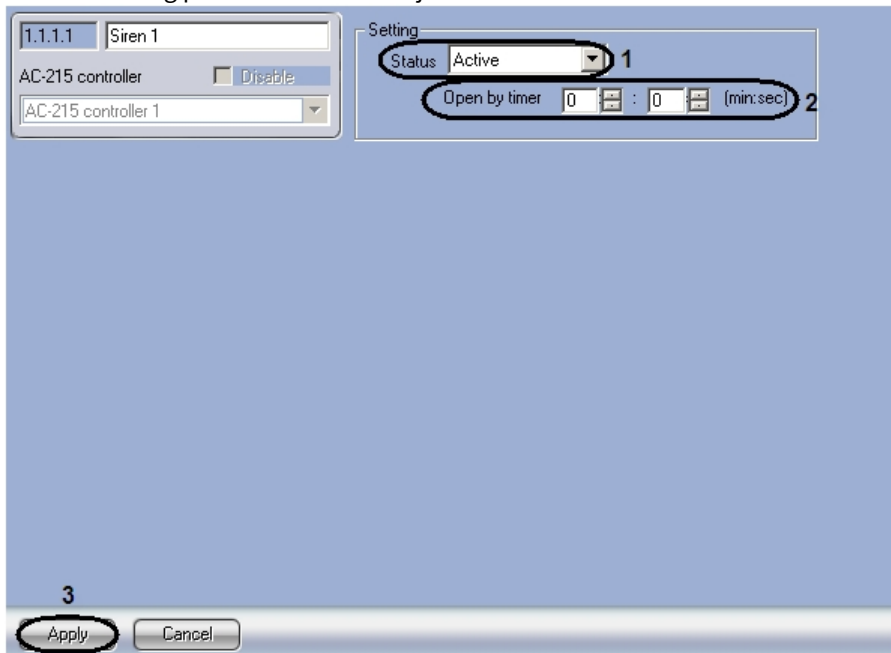
3.6 Configuration of Rosslare siren

Configuration of AC-215 controller siren is performed on the setting panel of the **Siren** object. This object is created on the basis of the **AC-215 controller** object on the **Hardware** tab of the **System settings** dialog box.



To configure AC-215 controller siren do the following:

1. Go to the setting panel of the **Siren** object.



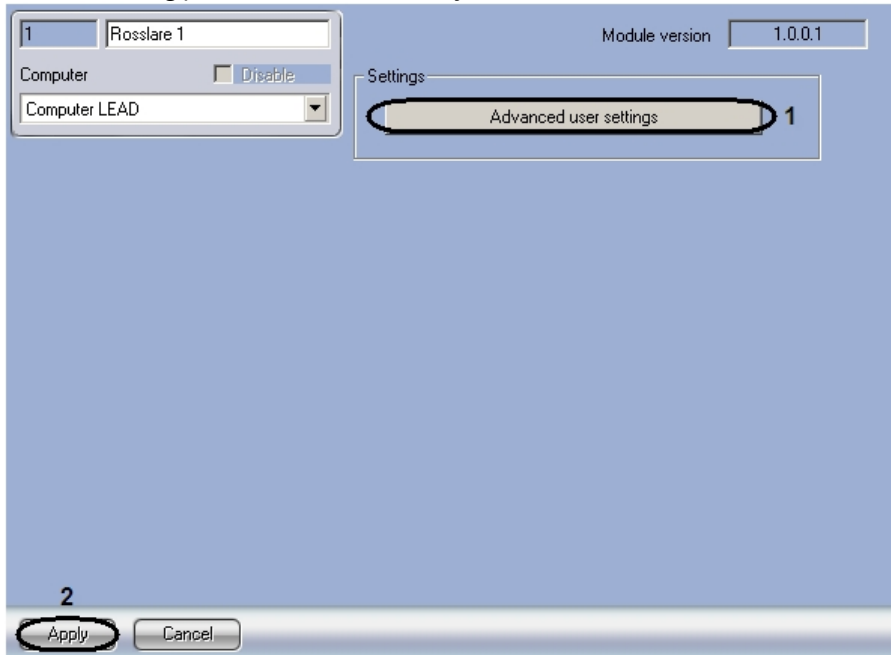
2. From the **Status** dropdown list select the siren status (1).
3. In the **Open by timer** field using **up-down** keys set the time (in minutes) at the expiration of which the siren switches (2).
4. To save changes click **Apply** (3).

Configuration of siren is completed.

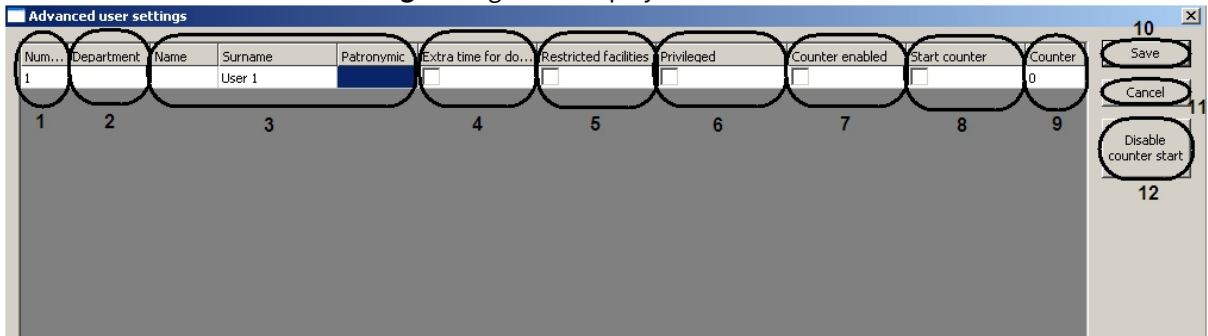
3.7 Configuration of Rosslare user settings

To configure user settings do the following:

1. Go to the setting panel of the **Rosslare** object.



2. To configure advanced user parameters click **Advanced user settings (1)**. As a result the **Advanced user settings** dialog box is displayed.



- Note.**
In the **Number** column the serial numbers list of users registered in Axxon PSIM Server is displayed (1).
- Note.**
In the **Department** column the list of departments registered in Axxon PSIM Server is displayed (2).
- Note.**
In the **Name, Surname, Patronymic** columns the list of user names, surnames, patronymics registered in Axxon PSIM Server is displayed (3).

3. To set extra time period during which the door can be open set the corresponding checkbox in the **Extra time for door-opening** column (4).
4. To restrict user facilities set the corresponding checkbox in the **Restricted facilities** column (5).

5. To give user the privileged rights set the corresponding checkbox in the **Privileged** column (6).
6. To enable counter set the corresponding checkbox in the **Counter enabled** column (7).
7. To start counter set the corresponding checkbox in the **Start counter** column (8).
8. In the **Counter column** the current counter value is displayed (9).
9. To disable counter start click **Disable counter start** (12).
10. To save changes and close the **Advanced user settings** dialog box click **Save** (10).

Note.

To close this box without saving changes click (11).

11. To save changes click **Apply** (2).

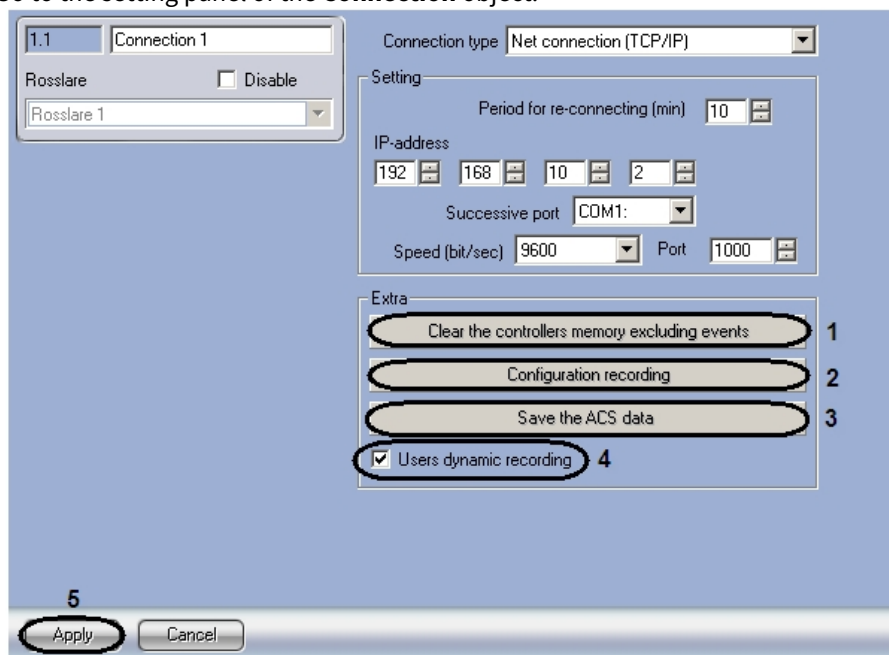
Configuration of user settings is completed.

3.8 Data recording to Rosslare devices

The data recording (users, equipment configuration) to *Rosslare* devices is provided by the software package.

To record data to *Rosslare* devices do the following:

1. Go to the setting panel of the **Connection** object.



2. To clear the controllers memory excluding events click **Clear the controllers memory excluding events** (1).
3. To record the *Rosslare* equipment configuration in *ACFA PSIM* software package to *Rosslare* devices click **Configuration recording** (2).
4. To record users, time zones and access levels to *Rosslare* devices click **Save the ACS data** (3).
5. To send changes of users, time zones and access levels to *Rosslare* devices set the **Users dynamic recording** checkbox (4).
6. To save changes click **Apply** (5).

Data recording to *Rosslare* devices is completed.

4 Operation of the Rosslare integration module

4.1 General information on operation of the Rosslare module

The following interface objects are used in order to operate the *Rosslare* integration module:

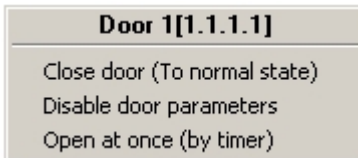
1. **Map.**
2. **Event log.**

Information about these interface objects setting is given in [Axxon PSIM Administrator's Guide](#).

Operation of the specified interface objects is described in detail in [Axxon PSIM Operator's Guide](#).

4.2 Control over Rosslare door

Control over door is performed in the **Card** interactive box using feature menu of the **Door** object.



Note.

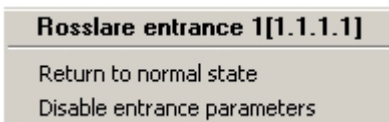
To open the object feature menu click right mouse button on the object icon.

Description of feature menu of the **Door** object is given in the table.

Command	Feature
Close door (to normal state)	Closes door
Disable door parameters	Disables door parameters
Open at once (by timer)	Opens door at once (by timer)

4.3 Control over Rosslare entrances

Control over Rosslare entrances is performed in the **Card** interactive box using feature menu of the **Entrance** object.



Description of feature menu of the **Rosslare entrance** object is given in the table.

Command	Feature
Return to normal state	Returns to normal state
Disable entrance parameters	Disables entrance parameters

4.4 Control over Rosslare exits

Control over Rosslare exits is performed in the **Card** interactive box using feature menu of the **Exit** object.

Rosslare exit 1[1.1.1.1]
Close exit (To normal state)
Disable exit parameters
Open at once (by timer)

Description of feature menu of the **Exit** object is given in the table.

Command	Feature
Close exit	Closes exit
Disable exit parameters	Disables exit parameters
Open at once (by timer)	Opens exit at once (by timer)

4.5 Control over Rosslare siren

Control over Rosslare siren is performed in the **Card** interactive box using feature menu of the **Siren** object.

Siren 1[1.1.1.1]
Enable at once (by timer)
Stop (default mode)

Description of feature menu of the **Siren** object is given in the table

Command	Feature
Enable at once (by timer)	At once enables the siren (by timer)
Stop (default mode)	Stops the siren