



# Guide for configuring and working with the Teltonika integration module

ACFA PSIM 1.1

Last update 14/11/2024

## Table of Contents

<b>1 Introduction into the Guide for configuring and working with the Teltonika integration module .....</b>	<b>3</b>
1.1 Purpose of the document.....	3
1.2 General information about the Teltonika integration module.....	3
<b>2 Supported hardware and licensing of the Teltonika integration module .....</b>	<b>4</b>
<b>3 Configuring Teltonika integration module .....</b>	<b>5</b>
3.1 Pre-configuring the Teltonika tracking system .....	5
3.2 Configuring the Teltonika tracking system connection to ACFA PSIM.....	5
3.3 Configuring the rule for displaying Teltonika parameters and events .....	6
3.4 Configuring the Teltonika tracker .....	8
<b>4 Working with Teltonika integration module .....</b>	<b>10</b>
4.1 General information about working with Teltonika module.....	10
4.2 Managing the Teltonika tracker .....	10

# 1 Introduction into the Guide for configuring and working with the Teltonika integration module

## On this page:

- [Purpose of the document](#)
- [General information about the Teltonika integration module](#)

## 1.1 Purpose of the document

This *Guide for configuring and working with the Teltonika integration module* is a reference manual designed for *Teltonika* Module configuration technicians.

This Guide presents the following materials:

1. General information about the *Teltonika* integration module.
2. Configuration of the *Teltonika* integration module.
3. Working with the *Teltonika* integration module.

## 1.2 General information about the *Teltonika* integration module

The *Teltonika* module is a component of *ACFA PSIM* Software System. It is designed to track the location of vehicles on the map, determine the vehicle speed, fuel consumption, and to monitor the status of various vehicle sensors using the *Teltonika* tracker. Configuring the *Teltonika* trackers in *ACFA PSIM* is impossible.

### **Note**

Detailed information about the *Teltonika* geotracking system is given in the official reference documentation (manufactured by Teltonika Telematics).

## 2 Supported hardware and licensing of the Teltonika integration module

<b>Manufacturer</b>	Teltonika Telematics Saltoniskiu st. 9B-1, LT-08105, Vilnius, Lithuania Phone: +370 5 212 7472 <a href="https://teltonika-gps.com/">https://teltonika-gps.com/</a>
<b>Integration type</b>	Low-level protocol
<b>Equipment connection</b>	GSM

### Supported equipment

Equipment	Function	Features
All Teltonika trackers	Tracker	See the manufacturer's website

### Licensing

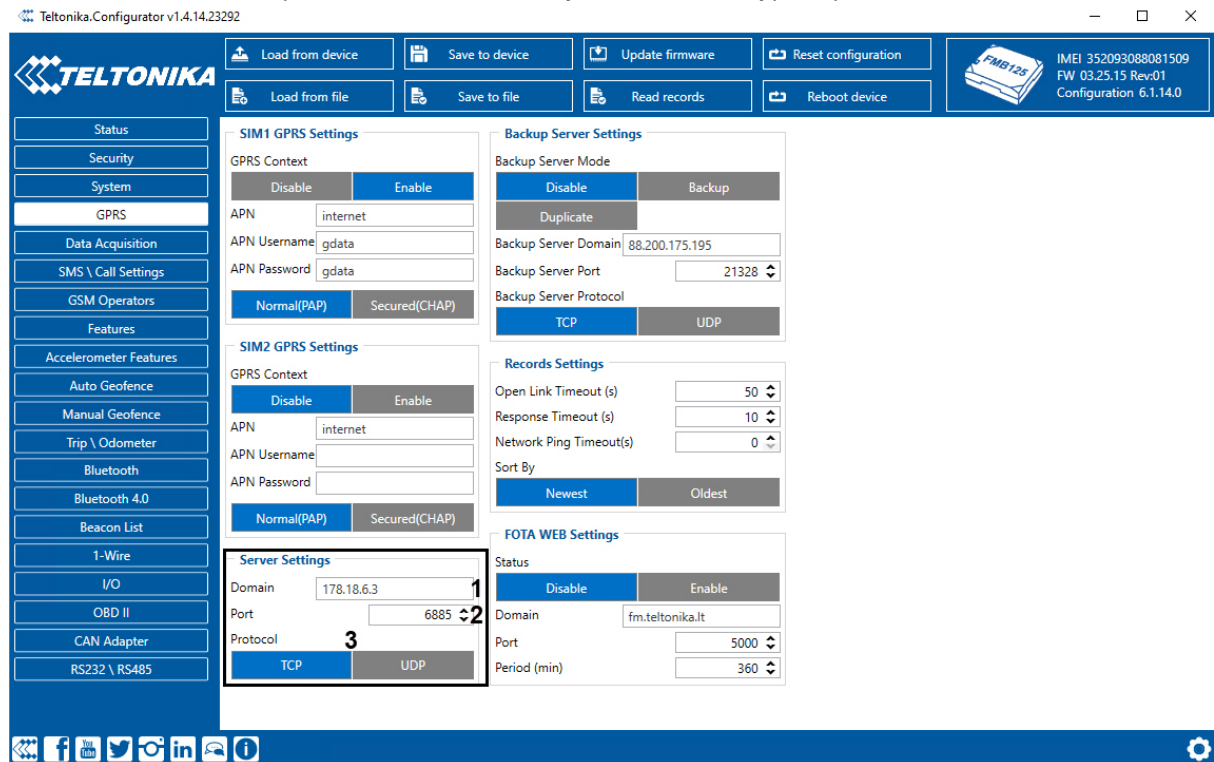
Per 1 tracker.

## 3 Configuring Teltonika integration module

### 3.1 Pre-configuring the Teltonika tracking system

Before you configure the *Teltonika* module in *ACFA PSIM*, do the following:

1. Install a compatible [Teltonika Configurator](#) depending on the trackers used.
2. Connect to the tracker and check its status. The tracker will start transmitting data only after establishing its position using GPS/GLONASS satellites.
3. On the **GPRS** tab, explicitly specify the server IP address and the server port for receiving data. This IP address should be static (public). It is also necessary to indicate the type of protocol used.



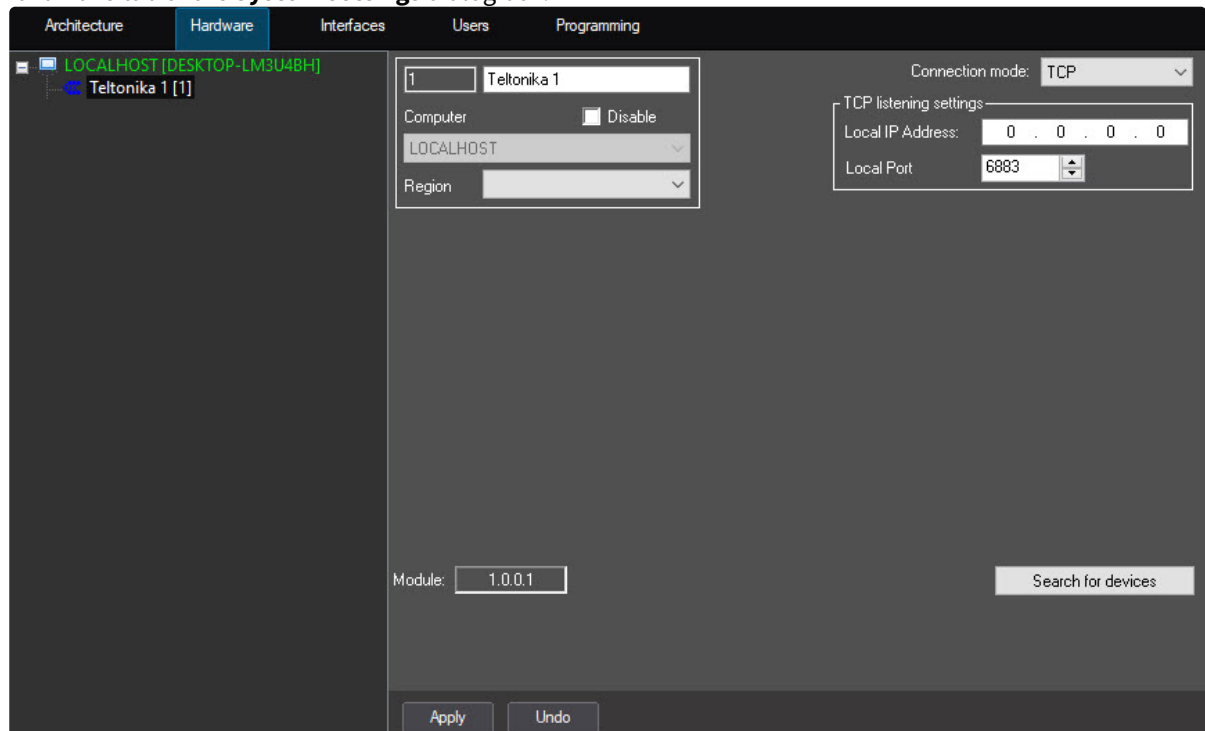
4. Configure other settings according to the official documentation for the tracker.

The preliminary configuration of the *Teltonika* geotracking system is complete.

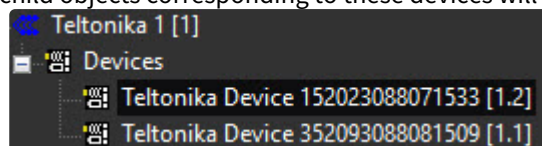
### 3.2 Configuring the Teltonika tracking system connection to ACFA PSIM

The *Teltonika* tracking system connection to *ACFA PSIM* is configured as follows:

1. Go to the settings panel of the **Teltonika** object, which is created on the basis of the **Computer** object on the **Hardware** tab of the **System settings** dialog box.



2. From the **Connection mode** drop-down list select the protocol type: **TCP** or **UDP**.
3. In the **Local IP Address** field, explicitly specify the local or static (public) IP address of the server, which is specified in the *Teltonika* configurator (see [Pre-configuring the Teltonika tracking system](#)). If a local IP address is used, the traffic from the static (public) server address should be redirected to it.
4. In the **Local Port** field, specify the port for receiving the events from the trackers.
5. Click the **Search for devices** button to search for the trackers. For the trackers found in the network, the child objects corresponding to these devices will be created.



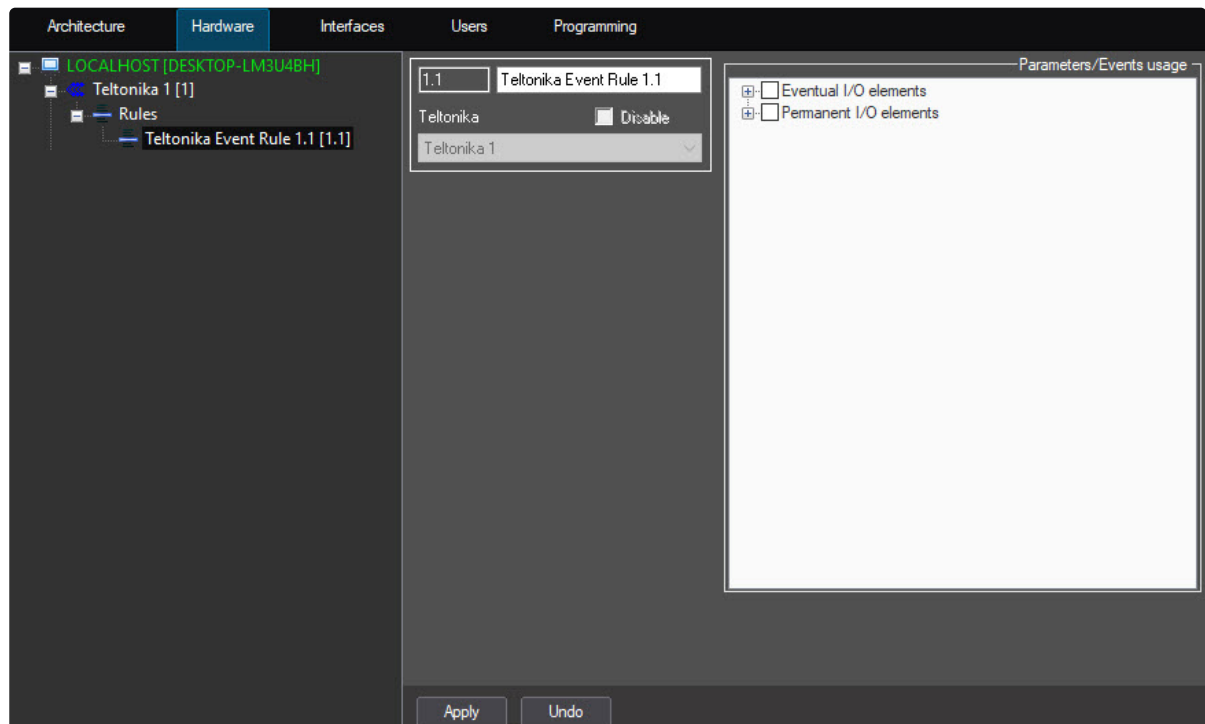
6. Click **Apply** to save the changes.

The *Teltonika* tracking system connection to *ACFA PSIM* is now configured.

### 3.3 Configuring the rule for displaying Teltonika parameters and events

The *Teltonika* trackers can transmit not only the location information, but also many parameters and events with information about the state of various vehicle sensors. To display certain parameters and events on the *Axxon PSIM* map, configure it as follows:

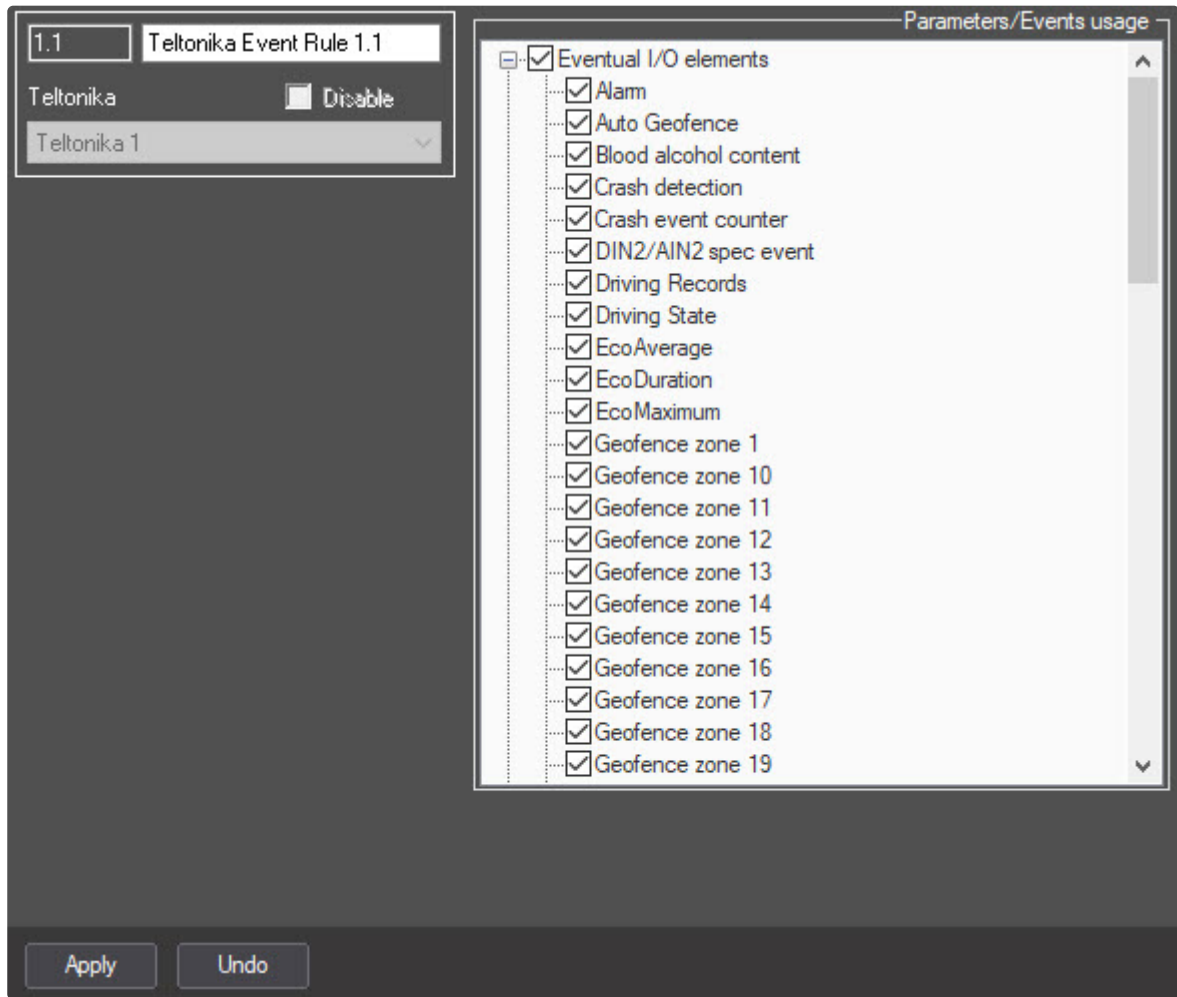
1. Go to the settings panel of the **Teltonika Event Rule** object, which is created on the basis of the **Teltonika** object.



2. In the **Parameters/Events usage** area, set the checkboxes for those parameters and events that should be displayed on the *ACFA PSIM* map.

**Note**

For the detailed information on parameters and events, see the official manual of the particular *Teltonika* tracker for which this rule is created.



3. Click **Apply** to save the changes.

Configuring the rule for displaying the *Teltonika* parameters and events is now complete.

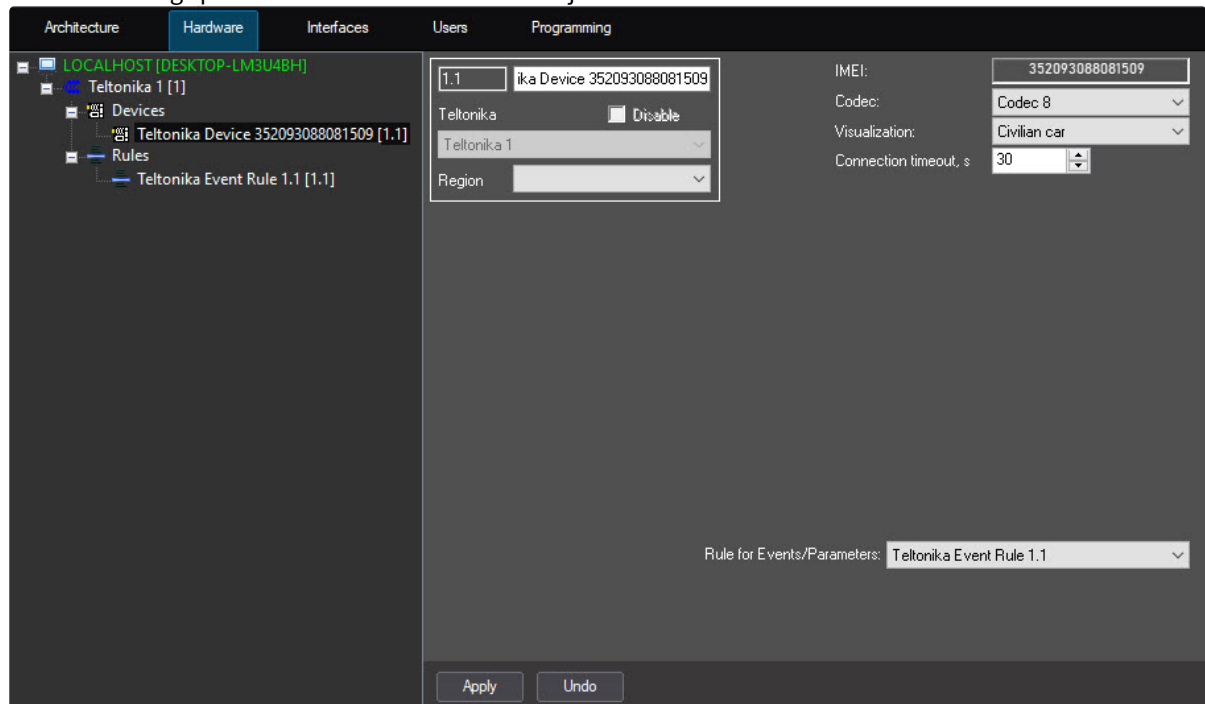
### 3.4 Configuring the Teltonika tracker

**Note**

The *Teltonika* tracker objects are created automatically after the *Teltonika* geotracking system is connected. You cannot create these objects manually.

The *Teltonika* tracker is configured as follows:

1. Go to the settings panel of the **Teltonika Device** object.



2. The **IMEI** field displays the tracker identifier in the GSM network.
3. In the **Codec** drop-down list, the tracker data encoding is displayed. This encoding should match the encoding specified in the Teltonika Configurator (see [Pre-configuring the Teltonika tracking system](#)).
4. From the **Visualization** drop-down list select the icon type that will be used to display the tracker on the *Axxon PSIM* map.
5. In the **Connection timeout, s** field, specify the tracker connection timeout in seconds.
6. From the **Rule for Events/Parameters** drop-down list select the rule that will be used to display the parameters and events of this tracker on the *Axxon PSIM* map (see [Configuring the rule for displaying Teltonika parameters and events](#)).
7. Click **Apply** to save the changes.

The *Teltonika* tracker is now configured.

## 4 Working with Teltonika integration module

### 4.1 General information about working with Teltonika module

The following interface objects are used for *Teltonika* integration module operation:

1. **Map.**
2. **Event viewer.**





For a detailed description of configuring these interface objects, refer to the *Axxon PSIM* software package [Administrator's Guide](#).

For a detailed description of using these interface objects, refer to the *Axxon PSIM* software package [Operator's Guide](#).

### 4.2 Managing the Teltonika tracker

The *Teltonika* tracker is not controlled in the **Map** interactive window.

The *Teltonika* tracker can have the following states:

	Communication lost
	Online
	Alarm
	Warning