



Quick Start Guide

Table of contents

| | | |
|----------|---|-----------|
| 1 | Configuring the Axxon One software package..... | 4 |
| 2 | Operating the Axxon One software package | 4 |
| 3 | Quick Start Guide. Introduction | 5 |
| 3.1 | Document purpose | 5 |
| 3.2 | Purpose of the Axxon One software package | 5 |
| 4 | Installing the Software Package..... | 6 |
| 5 | Licensing the Software package | 7 |
| 6 | Starting and closing the Axxon One software..... | 8 |
| 7 | Configuring the Axxon One software package..... | 9 |
| 7.1 | Create Cameras..... | 9 |
| 7.2 | Creating Archive | 9 |
| 7.3 | Create and Configure Detection Tools..... | 10 |
| 7.4 | Configuring Users and Roles | 11 |
| 7.5 | Create and Configure Layouts | 12 |
| 8 | Operating the Axxon One software package | 14 |
| 8.1 | Alarms Management | 14 |
| 8.2 | Search Video Footage | 15 |
| 8.3 | Export Snapshots and Video Recordings..... | 16 |
| 8.4 | Working with Map | 16 |
| 8.5 | ANPR and Search in Video Footage..... | 18 |
| 8.6 | Facial Recognition and Search in Video Footage | 18 |
| 8.7 | Receive Metadata from POS devices..... | 19 |

[Quick Start Guide. Introduction](#)(see page 5)

[Installing the Software Package](#)(see page 6)

[Licensing the Software package](#)(see page 7)

[Starting and closing the Axxon One software](#)(see page 8)

1 Configuring the Axxon One software package

Create Cameras¹

Creating Archive²

Create and Configure Detection Tools³

Configuring Users and Roles⁴

Create and Configure Layouts⁵

2 Operating the Axxon One software package

Alarms Management(see page 14)

Search Video Footage(see page 15)

Export Snapshots and Video Recordings(see page 16)

Working with Map(see page 16)

ANPR and Search in Video Footage(see page 18)

Facial Recognition and Search in Video Footage(see page 18)

Receive Metadata from POS devices(see page 19)

¹ <https://docs.axxonsoft.com/confluence/display/one1en/Create+Cameras>

² <https://docs.axxonsoft.com/confluence/display/one1en/Creating+Archive>

³ <https://docs.axxonsoft.com/confluence/display/one1en/Create+and+Configure+Detection+Tools>

⁴ <https://docs.axxonsoft.com/confluence/display/one1en/Configuring+Users+and+Roles>

⁵ <https://docs.axxonsoft.com/confluence/display/one1en/Create+and+Configure+Layouts>

3 Quick Start Guide. Introduction

3.1 Document purpose

This document, titled [Quick Start Guide](#)(see page 3), is intended to be used as a concise guide for installing and starting the *Axxon One* software package as well as for configuring and using its main functions (video surveillance, audio surveillance, pan/tilt/zoom devices management).

More detailed information on the *Axxon One* software package is presented in the document titled [User Guide](#)⁶.

3.2 Purpose of the Axxon One software package

Meet *Axxon One*, a next-generation open-platform video management software (VMS). Thanks to exciting innovations from AxxonSoft, the *Axxon One* platform has reached a whole new level of performance, reliability, efficiency, functionality and accessibility.

Video surveillance systems based on *Axxon One* can scale infinitely: there are no restrictions on the number of video servers, workstations or video cameras. *Axxon One* also plays well with other devices and systems.

Support for over 6000 models of IP devices including more than 1500 models of IP cameras integrated using proprietary protocol and 4500 ONVIF compliant devices is included, as well as remote access from mobile devices and a web interface.

Security needs of all sizes – from those of large-scale distributed facilities to the smallest sites – can be efficiently met with *Axxon One* video management software. Every license includes full, unrestricted VMS functionality, even on systems of just one camera. Users on tight budgets will appreciate the free version of the program, which supports up to 4 camera channels.

⁶ <https://docs.axxonsoft.com/confluence/display/one20en/User+Guide>

4 Installing the Software Package

To install the *Axxon One* VMS, run the Setup.exe file with administrator rights.

The following three types of installations are available when installing *Axxon One* to a personal computer:

1. **Client** – this type of installation is used for installing the software's user interfaces, which enable any user to connect to any Server within a single security system and to perform administration/management/monitoring of a guarded location based on the permissions granted by the administrator.
2. **Server and Client** – installs Client and Server services. *Axxon One* Server:
 - a. Interacts with devices (cameras, microphones, sensors, relays, etc.) that constitute a security system.
 - b. Writes video footage to archives on system disks; interacts with archives on NAS.
 - c. Hosts VMDA database.
 - d. Employs detection tools to analyze live video.
 - e. Keeps configurations of the security system, user settings, custom layouts, macros, etc.
3. **Failover Server and Client** – installs Client and Server services enhanced with the FailOver capability. In emergency (power outage, network problems), the FailOver technology restores the Server configuration on another Server.

The following required software is installed, if necessary:

1. PostgreSQL database Server. A new log database is automatically created with the name – ngp, the username – ngp, and the password – ngp.
2. .NET Framework 2.0, .NET Framework 3.5 SP1 and .NET Framework 4.0.
3. Acrobat Reader, which is necessary for exporting in PDF format and printing freeze frames (see [Frame export](https://docs.axxonsoft.com/confluence/display/one20en/Frame+export)⁷).

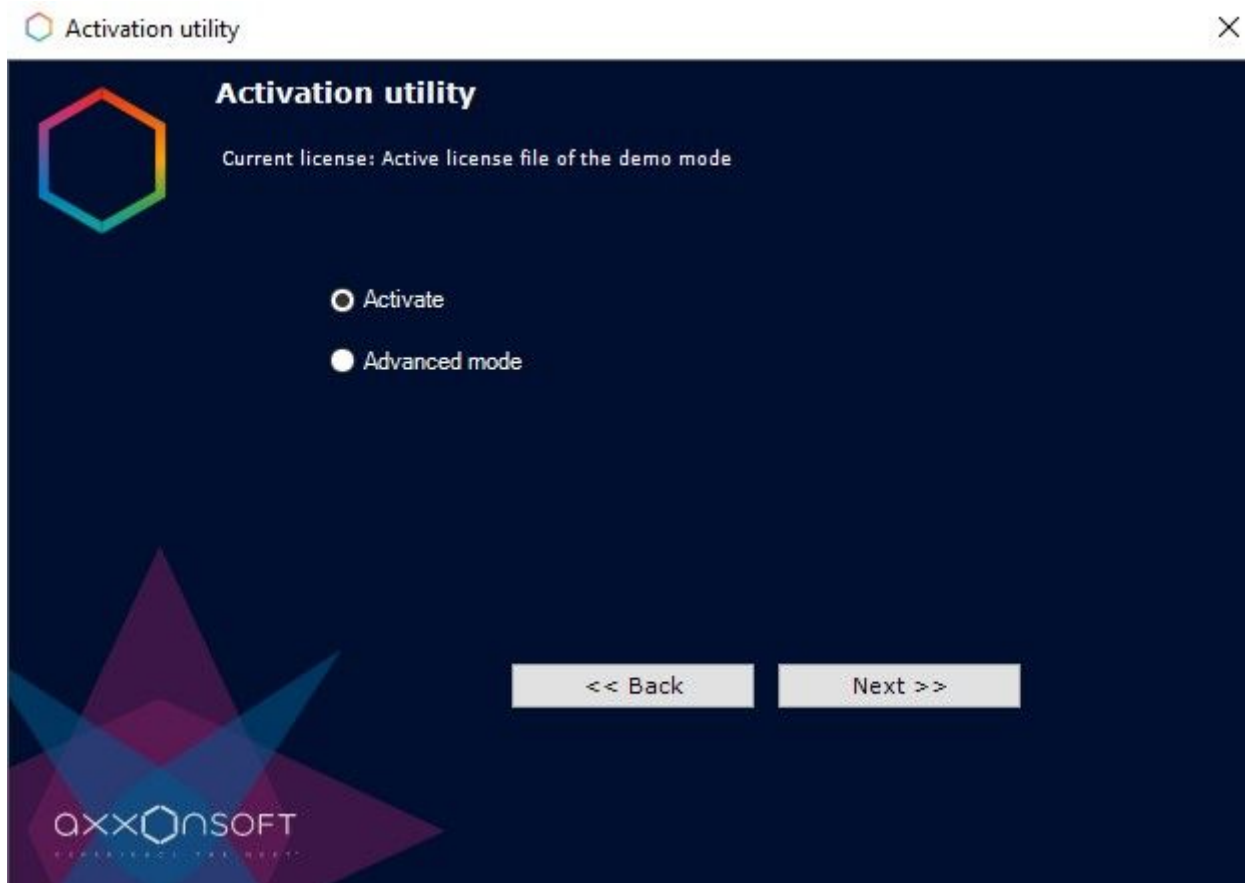
⁷ <https://docs.axxonsoft.com/confluence/display/one20en/Frame+export>

5 Licensing the Software package

There are 6 types of *Axxon One* license: **Axxon One Demo**, **Axxon One Free**, **Axxon One Start**, **Axxon One Professional**, **Axxon One Enterprise** and **Axxon One Unified**. Upon installation, the software will be launched in *Axxon One* Demo mode. Worktime period is from 8 AM to 6 PM.

You should activate *Axxon One* VMS to utilize the full feature set of the security software package. You can activate the software by distributing an activation key on the system.

License activation for the *Axxon One* software package is carried out through the corresponding utility. Launch the product activation utility using **Start** menu: **Start** → **All programs** → **Axxon One** → **Utilities** → **Product activation**.



It is recommended that you read [Activation guide](#)⁸ providing step by step activation instructions.

⁸ <https://docs.axxonsoft.com/confluence/display/one20en/Activation+Guide>

6 Starting and closing the Axxon One software

Check readiness for operation of the entire communication environment, cameras, microphones and other system components before starting the system.

To start working with the software, you must perform the following steps:

1. Go to **Start** → **All Programs** → **Axxon One** → **Axxon One**.

Axxon One's Client will then launch and an authorization window will appear.

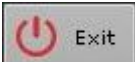
2. Enter your username and password and click **Connect**.

Note

When logging into the system for the first time, use the username **root**, which has administrator permissions. Enter "root" into the **Username** and **Password** fields. The administrator then needs to configure the system for multi-user access.

If authorization is successful, a video surveillance monitor will be displayed on the screen.

Before closing *Axxon One*, you need to exit the user interfaces. To do this, you need to do one of the following:

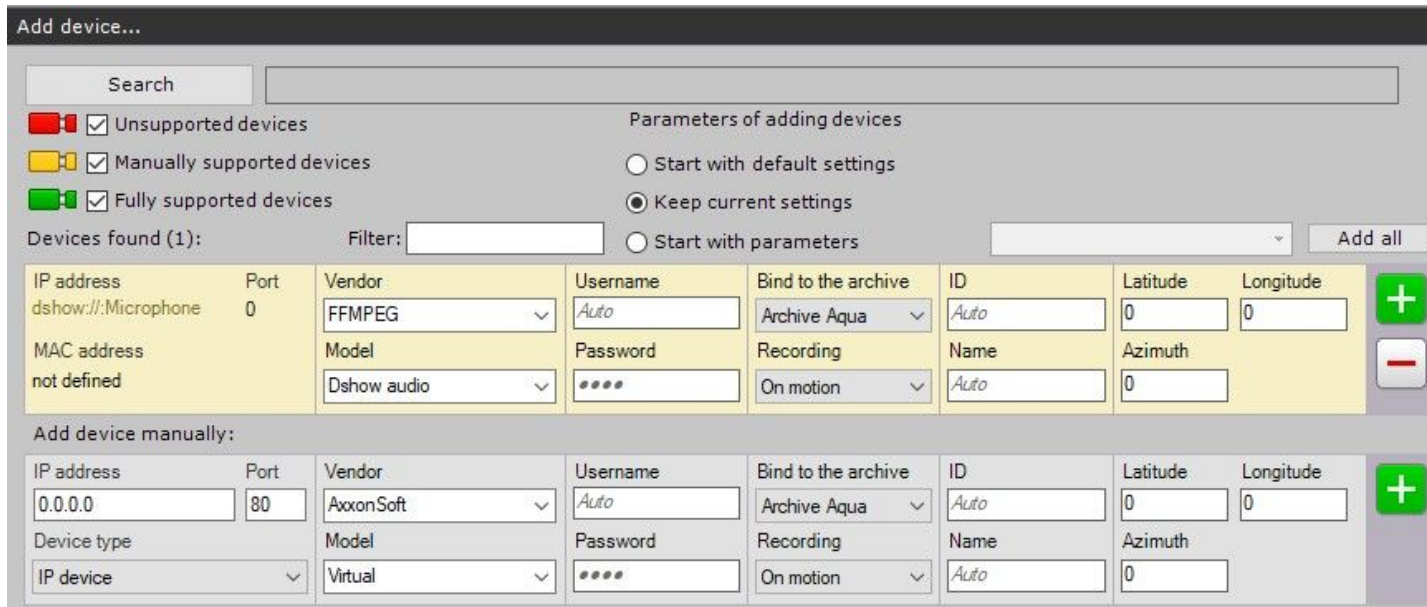
1. Click the  button located under **Settings**.
2. In the Windows taskbar notification area, in the context menu of the *Axxon One* icon, select **Close window**.

When you perform one of these actions, the authorization window will appear. To close *Axxon One* (completely exit the Client), click **Close**.

7 Configuring the Axxon One software package

7.1 Create Cameras

You can add video cameras and IP servers to the system by using the IP Device Discovery Wizard.



The IP devices are color-coded based on the status of the device.

| Color of video camera icon | Description |
|----------------------------|--|
| | Fully supported device |
| | Manual configuration required |
| | Axxon One compatibility not guaranteed |

When adding a device, you can immediately set several configuration options, such as:

1. Firmware version.
2. Username and password.
3. Archive and recording (non-stop or based on a time schedule).
4. Object ID and name.

In addition, three modes are available for adding a device to a configuration: with the default settings, with the current settings or custom settings.

To add one device, click the button. To add all devices, click the **Add all** button.

If an IP device is not shown in the search results (because it is located on another subnet or contact has been temporarily lost), you can add it manually. To do so, in the neutral-colored area above the search results, select the type of IP device that you are adding (with or without edge storage), specify an IP address and port, and select the manufacturer and model.

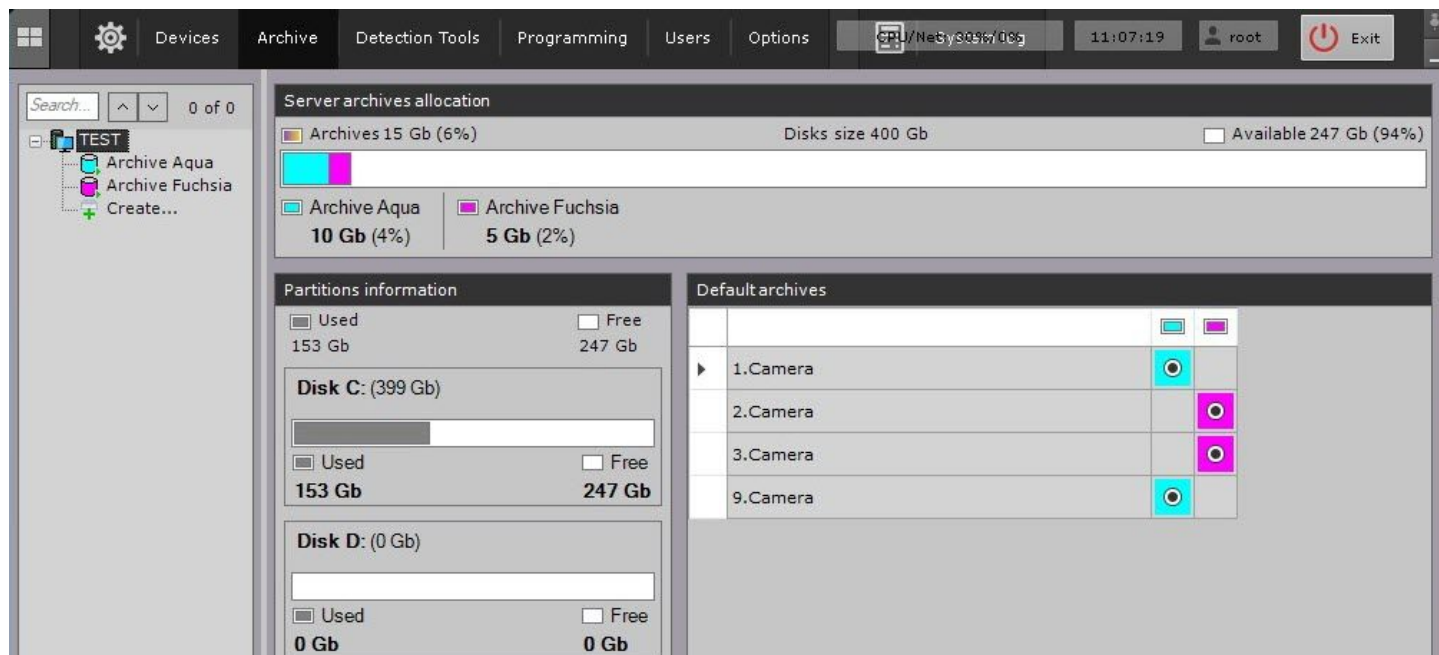
7.2 Creating Archive

On the base of one server you can create an unlimited number of archives. An archive can be placed on local disks or on network disks.

You can save a single archive volume of recorded video on each local drive. An archive volume is a file or an entire logical drive (with the proprietary SolidStore file system).

On network drives, you can save an archive volume only in the form of a file.

To create an archive, go to the **Archive** tab and click the **Create...** link.



Configure the archive as follows: select the archive type, configure archive volumes, click the **Apply** button.

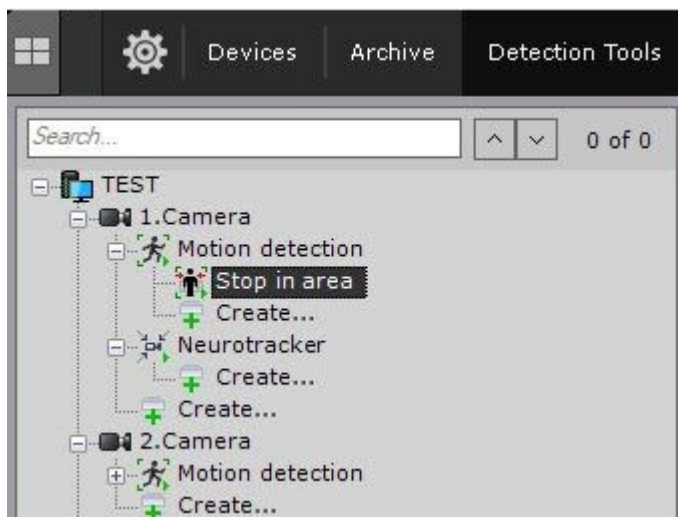
Configure the recording as follows: select the cameras, configure recording settings.

7.3 Create and Configure Detection Tools

In the *Axxon One* software package, several types of detection tools process incoming data:

1. Scene Analytics detection tools.
2. Facial recognition tools.
3. Automatic number plate recognition tool.
4. Basic detection tools:
 - a. video analytics;
 - b. audio analytics.
5. Detection tools embedded in a video camera.

You can configure detection in the **Detection Tools** tab.



To create a detection tool, click **Create...** in the camera's object tree and choose a required tool.

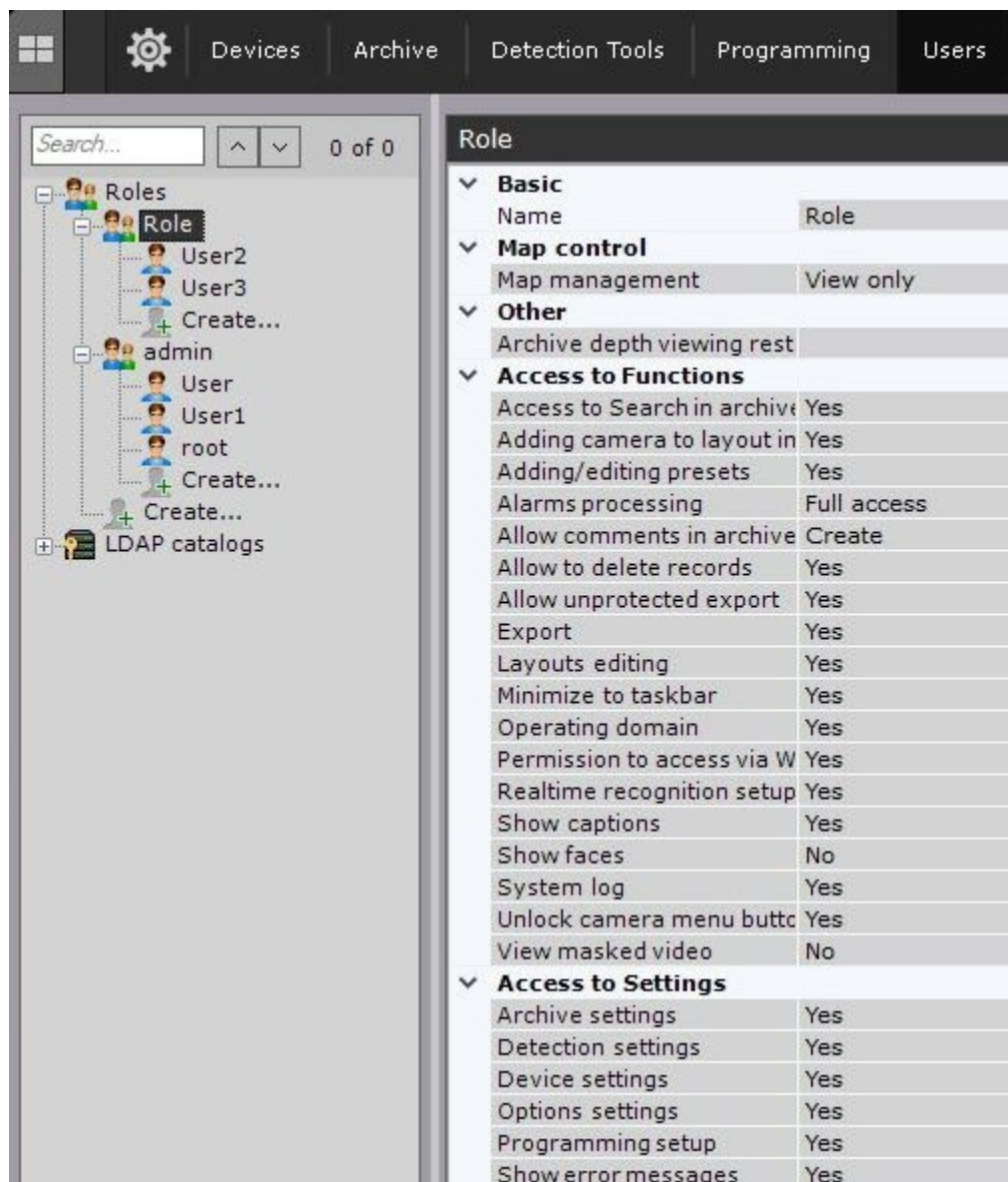
To create Scene Analytics and the Facial Recognition detection tools, you need to create a respective object first. You create detection tools on the basis of these objects.

7.4 Configuring Users and Roles

In *Axxon One*, every user has permissions based on his role.

By default, there is one role (**admin**) and one user (**root**). The **root** user belongs to the **admin** role and has rights to configure all components of the video surveillance system. To add a user with individual permissions, create a new role with the necessary permissions and then create a new user account.

Roles and users can be added and configured in **Settings**, on the **Users** tab.



There are two types of users: local (stored in the Server database) and [LDAP](https://en.wikipedia.org/wiki/Lightweight_Directory_Access_Protocol)⁹.

Roles configuration involves setting group and individual permissions for user's access to various system settings, features and hardware.

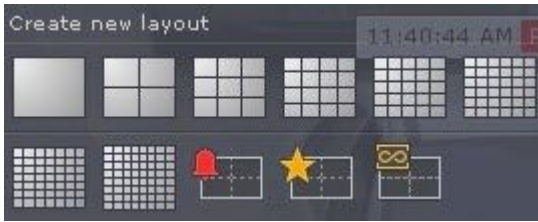
You can assign a role to a user and set permissions for the role.

7.5 Create and Configure Layouts

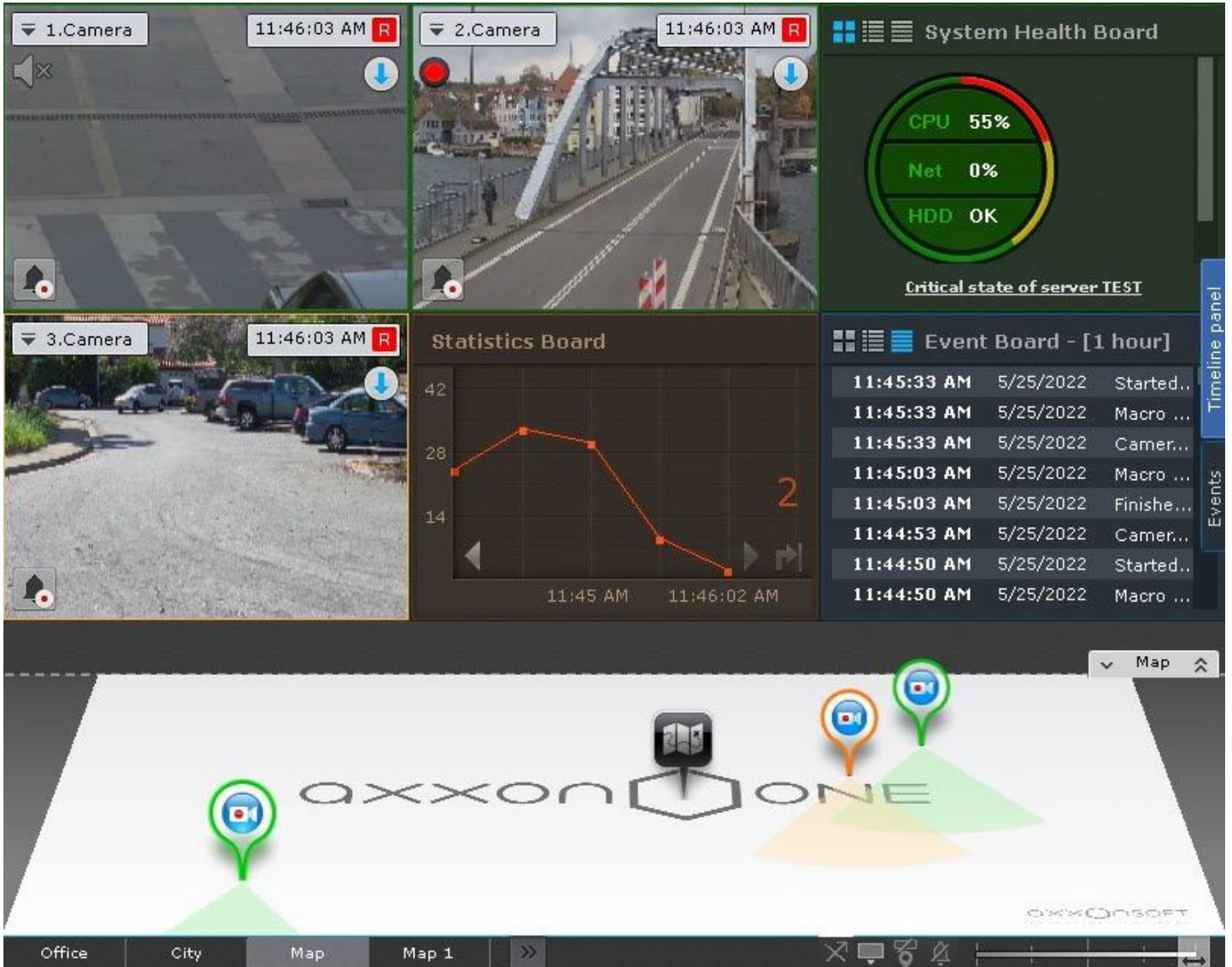
You can create and configure custom layouts for any user. Log into the Server under the appropriate username and configure the layouts for that user.

New layouts are created based on standard layout types.

⁹ https://en.wikipedia.org/wiki/Lightweight_Directory_Access_Protocol



You can add video camera tiles and information boards (dashboards) to a layout. You can also attach a map, that will be automatically displayed when you switch to this layout.





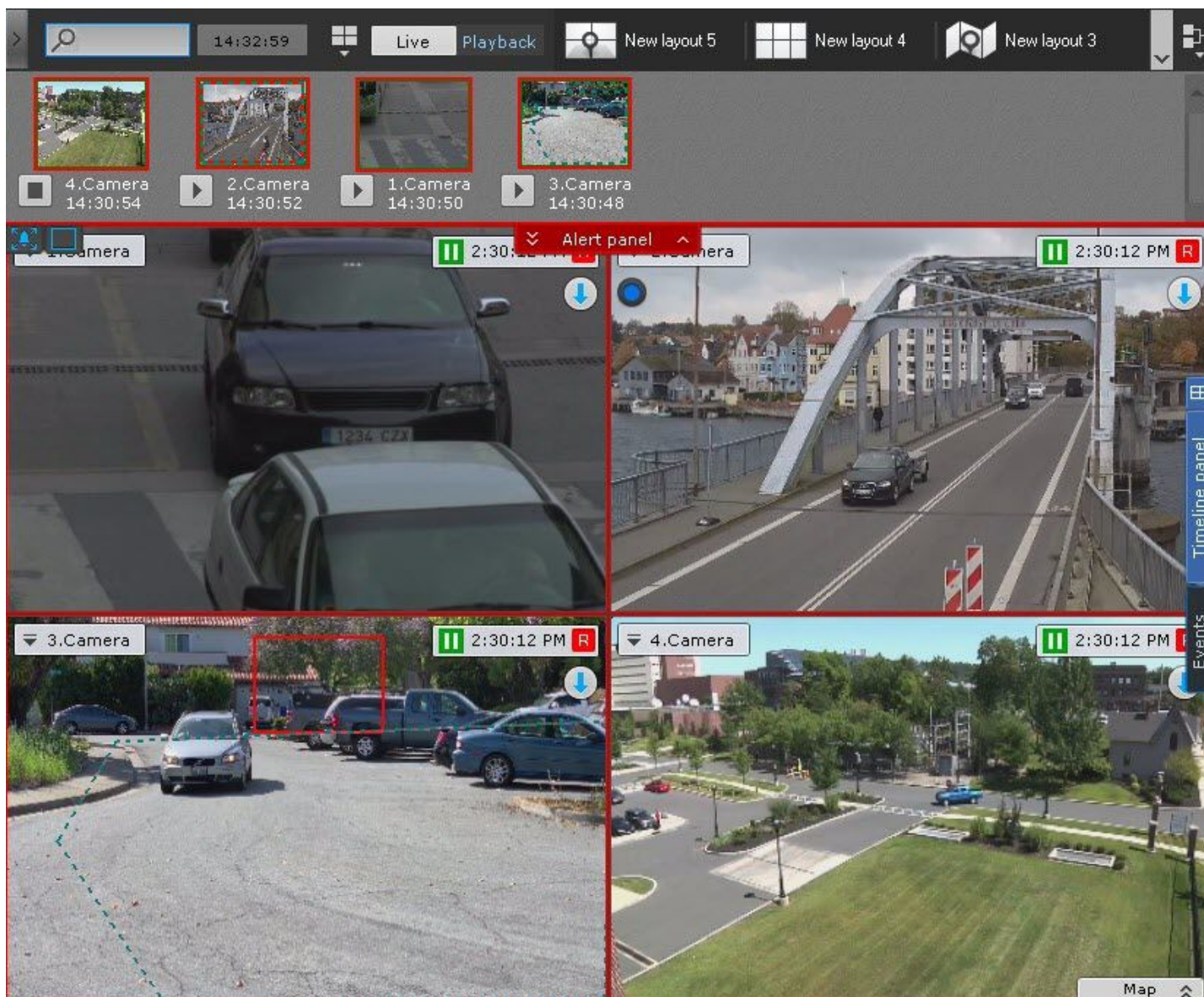
8 Operating the Axxon One software package

8.1 Alarms Management

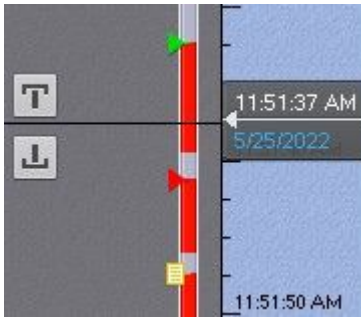
All alert/alarm events are displayed on the **Alert panel**.

The **Alert panel** is at the top of the screen and you can see it only if there are active alarms. To open **Alert panel**, click the

 **Alert panel**  button.



When you classify an alarm (critical, non-critical, false, or missed), a flag is added to the alarm recoding on the timeline. A flag is added to the point on the timeline when the alarm began.



8.2 Search Video Footage

You can search recorded video in two modes: the Archive mode and the Archive Search mode.

In the Archive mode (the **Playback** tab in the viewing tile), you can search video episodes using one of the two timelines.

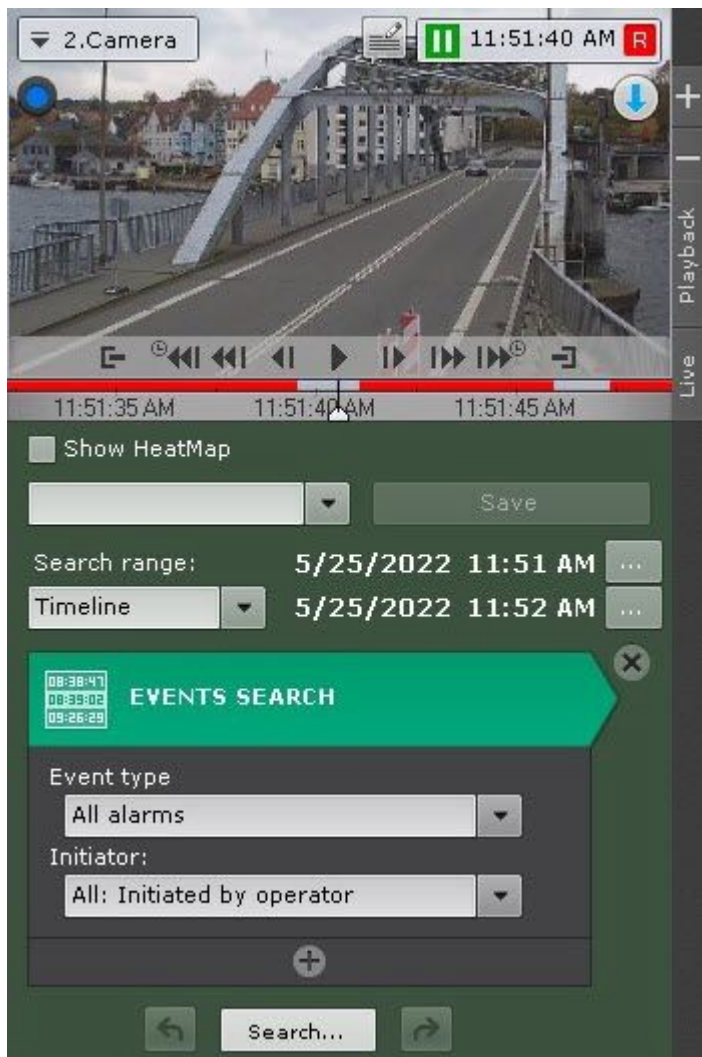
To navigate in the archive, left-click and drag the pointer to the point of interest.

In the Archive Search mode (the tab **Search**), you can set criteria (filters) to search video footage. You can choose from the following search filters:


1. Events search.
2. Time search.
3. Titles search.
4. Face search.
5. ANPR search
6. Forensic search.
7. Searching comments.



Forensic Search MomentQuest lets you search for video episodes using the following criteria:

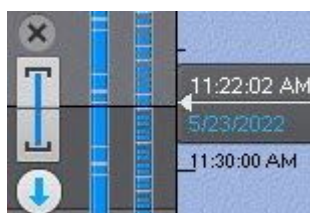
1. Motion in Area.
2. Loitering of an object in a specific area.
3. Simultaneous presence of a large number of objects in a specific area.
4. Crossing of a virtual line by an object's trajectory.
5. Motion from one area to another.



8.3 Export Snapshots and Video Recordings

You can export in one of the following two ways: set the export range in the archive or click  in the viewing tile.

You can select the export range on the timeline with the right-click or set it using the buttons  .



Snapshots can be exported to JPG and PDF, video can be exported to AVI, MKV and EXE formats. Exported video footage is digitally watermarked to prove the genuineness of the video recording.

8.4 Working with Map

The 3D interactive map is used to visualize the secured facility, control cameras and identify cameras' location. Interactive maps in *Axxon One* can obtain image data from graphics of the site or geospatial data from OpenStreetMap.

Note

To work with OpenStreetMap maps in *Axxon One*, you need to purchase an [OpenStreetMap](https://www.openstreetmap.org/copyright/en)¹⁰ license.



The map can contain icons for cameras, relays, and sensors. The area in which live video is displayed and field of view are indicated for each camera.

The interactive map allows controlling the objects from the context menus of the graphical symbols on the map showing the states of the corresponding objects.

You can use the interactive map in three modes:

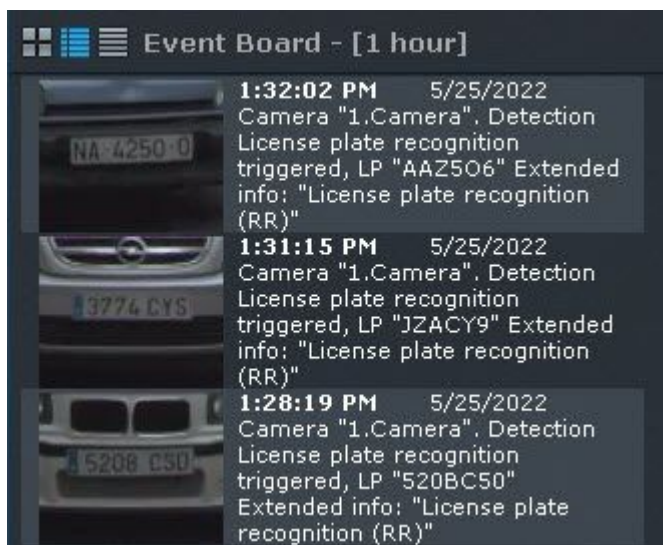
1. 3D mode, in which both the map and layout are available.
2. 2D mode, in which only the map is available.
3. Immersion mode, in which video is overlaid on the map.

¹⁰ <https://www.openstreetmap.org/copyright/en>

8.5 ANPR and Search in Video Footage

Automatic number plate/license plate recognition is performed by a special detection tool. ANPR/LPR event is a recognized number plate written to a database.

These events can be displayed in a layout on the Event Board or Dialog Board.

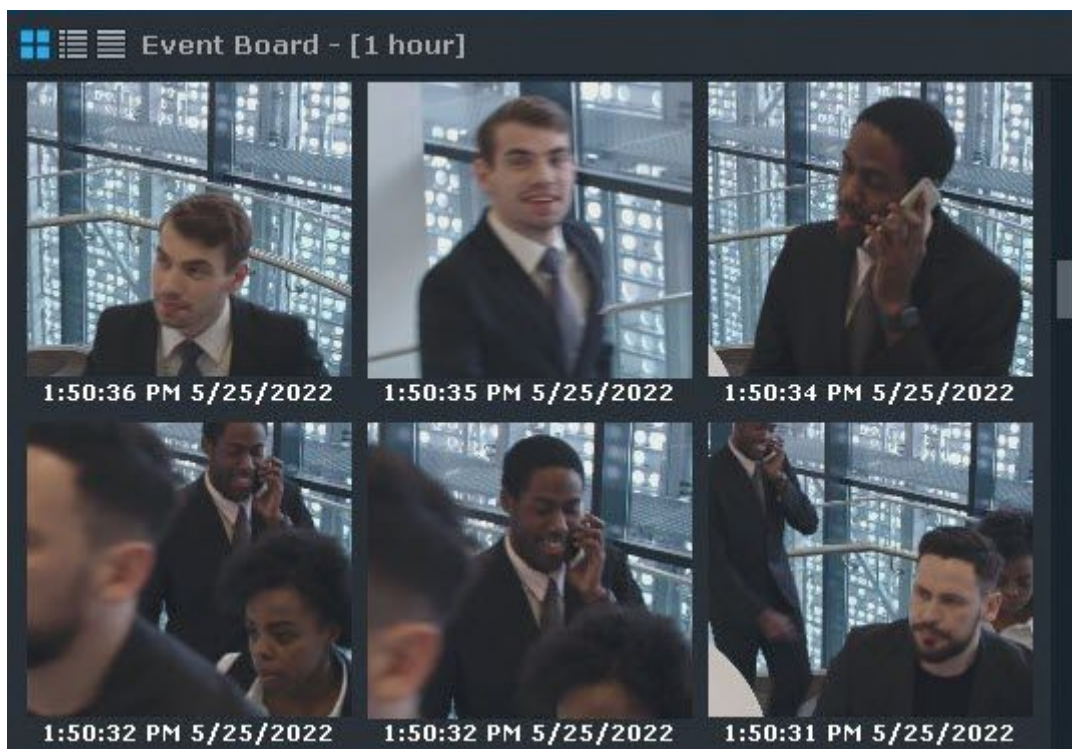


You can search ANPR events in recorded video from one or several cameras.

8.6 Facial Recognition and Search in Video Footage

Face recognition is performed by a special detection tool. A facial recognition (FR) event is a set of digitized face features written to a database.

These events can be displayed in a layout on the Event Board or Dialog Board.

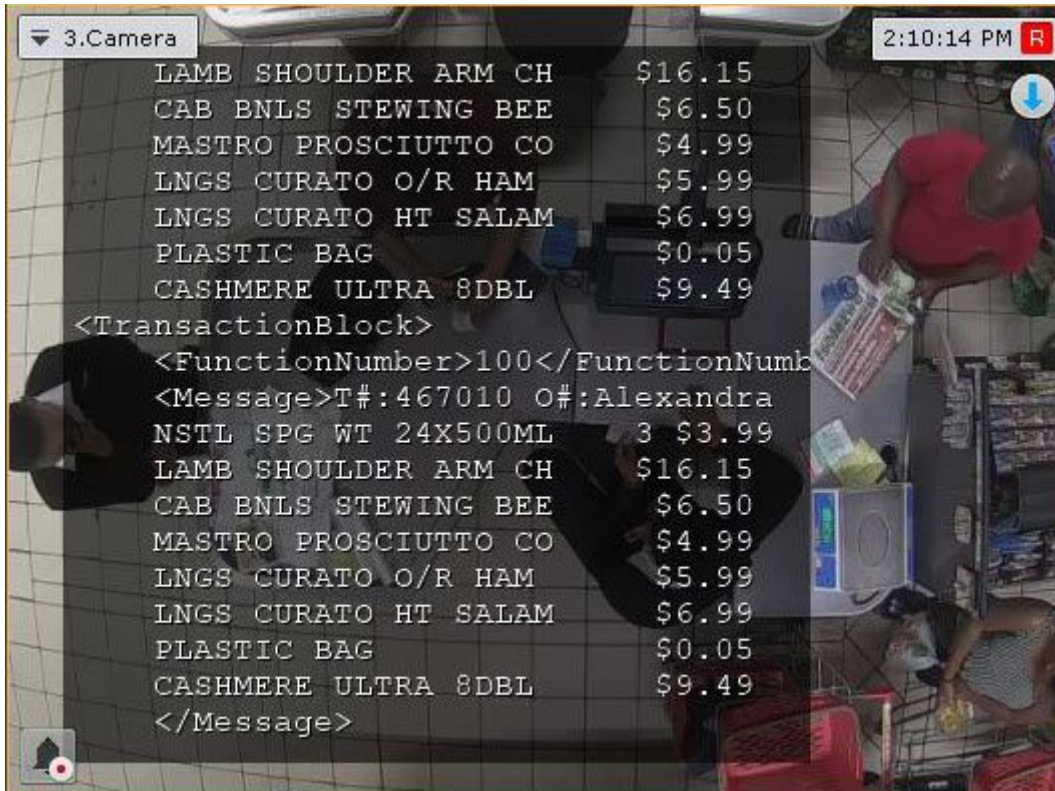


You can search FR events for similarity with an uploaded picture in recorded video from one or several cameras.

8.7 Receive Metadata from POS devices

You can configure *Axxon One* to obtain data from POS devices.

If you have configured the titles overlay, the video tiles show titles superimposed on video. You can have titles from several POS terminals in the same camera window.



In the Archive Search mode, you can enter the keywords for titles and find relevant video recordings.