



**Guide for configuring and working with the BACnet Server
integration module**

Table of Contents

1	Introduction into the Guide for configuring and working with the BACnet Server integration module.....	4
1.1	Purpose of the document.....	4
1.2	General information about the BACnet Server integration module	4
2	Supported hardware and licensing of the BACnet Server integration module	5
3	Adding the BACnet Server integration module	6
4	Configuring the object of the BACnet Server integration module.....	7
4.1	Configuring the device of the BACnet Server integration module	8
5	Working with the BACnet Server integration module	10
5.1	General information about working with the BACnet Server integration module.....	10
5.2	Configuring macros when working with the BACnet Server integration module.....	10
5.3	Managing the object of the BACnet Server integration module	11
5.4	Managing the device of the BACnet Server integration module	11
5.5	Managing the property of the BACnet Server integration module.....	12

1 Introduction into the Guide for configuring and working with the BACnet Server integration module

On the page:

- [Purpose of the document \(see page 4\)](#)
- [General information about the BACnet Server integration module \(see page 4\)](#)

1.1 Purpose of the document

The *Guide for configuring and working with the BACnet Server integration module* is a reference and information manual and is intended for configuration specialists and operators of the **BACnet Server** integration module.

The Guide has the following information:

1. General information about the **BACnet Server** integration module;
2. Adding the **BACnet Server** integration module;
3. Configuration of the **BACnet Server** integration module;
4. Working with the **BACnet Server** integration module.

1.2 General information about the BACnet Server integration module

The **BACnet Server** integration module is used for connecting any devices supporting the **BACnet Server** protocol. The **BACnet Server** integration module allows you to perform data exchange and data processing between *Axxon One + ACFA* and BACnet devices.



Note

All standard device types are supported. The operation of non-standard device types isn't guaranteed.

2 Supported hardware and licensing of the BACnet Server integration module

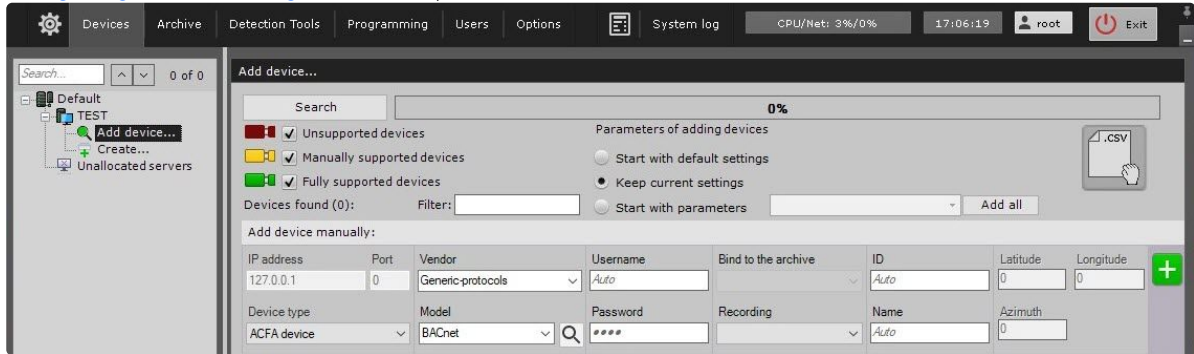
Name of the integration module	BACnet Server (see page 4)
Functionality	The BACnet Server integration module allows you to perform data exchange and data processing between <i>Axxon One + ACFA</i> and BACnet devices
Licensing	Per each device (ACFASensor)
Type of integration	Universal protocol (BACnet)
ACFA version	ACFA 3.0 Release Notes ¹


¹ <https://docs.axxonsoft.com/confluence/display/AxACFA10EN/ACFA+3.0+Release+Notes>

3 Adding the BACnet Server integration module

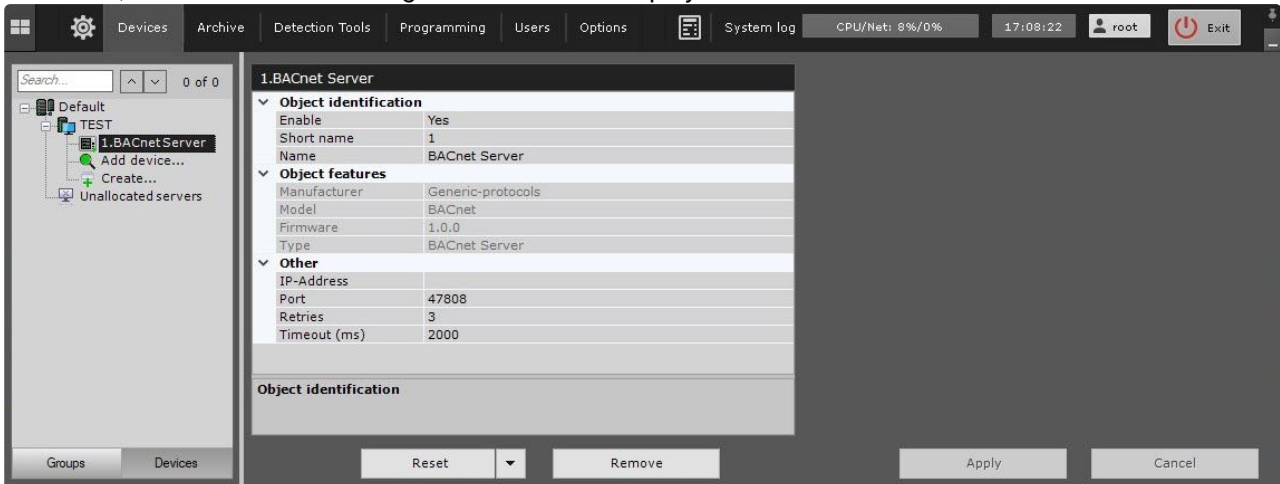
To add the **BACnet Server** integration module to the system, do the following:

1. Add the device to the system manually using the IP Device Discovery Wizard (see [Searching, adding, configuring and removing IP devices](#)²).



2. From the **Device type** drop-down list, select the **ACFA device**.
3. From the **Vendor** drop-down list, select **Generic-protocols**.
4. From the **Model** drop-down list, select **BACnet**.
5. Click the  button.

As a result, the **BACnet Server** integration module is displayed in the hardware tree.

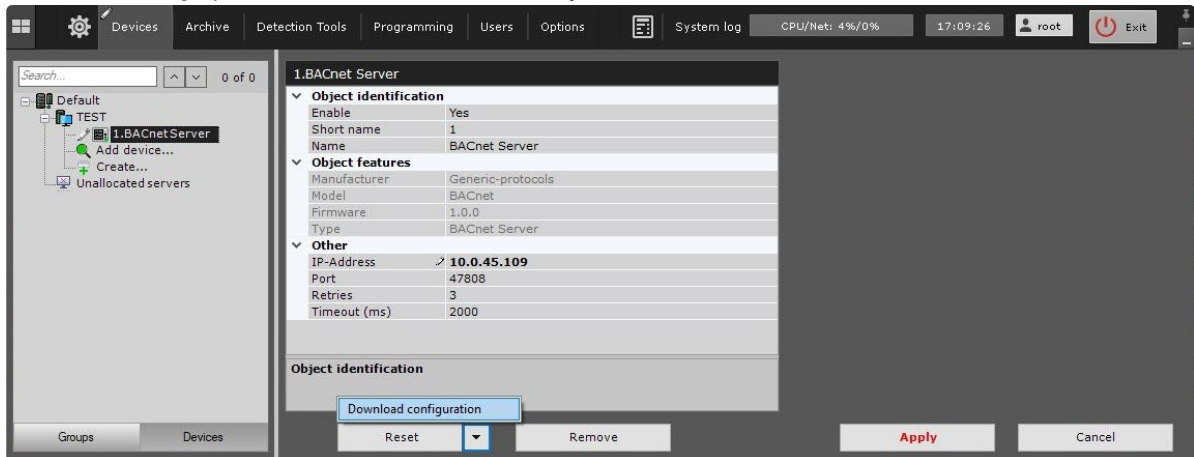



² <https://docs.axxonsoft.com/confluence/display/one20en/Searching%2C+adding%2C+configuring+and+removing+IP+devices>

4 Configuring the object of the BACnet Server integration module

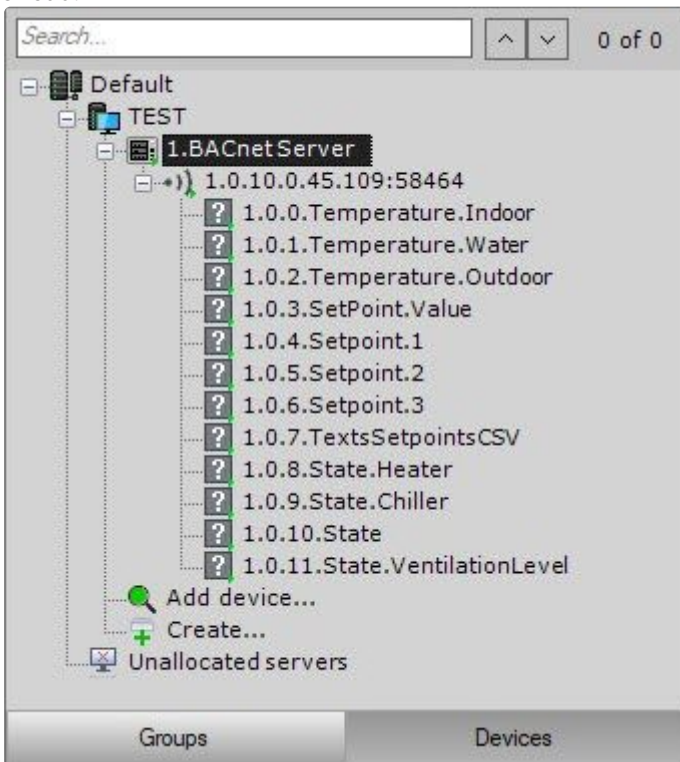
To configure the object of the **BACnet Server** integration module, do the following:

1. Go to the settings panel of the **BACnet Server** object.



2. In the **IP Address** field, specify the IP address of the device connected via the BACnet protocol.
3. In the **Port** field, specify the number of the port for connection to the BACnet device. The default value is **47808**.
4. In the **Retries** field, specify the number of attempts to connect to the BACnet server. The default value is **3**.
5. In the **Timeout (ms)** field, specify in milliseconds the time interval between attempts to connect to the BACnet server. The default value is **2000**.
6. Click the **Apply** button to save the settings.
7. Click the  button and select **Download configuration** from the drop-down list.
8. Click the **Apply** button to save the settings.

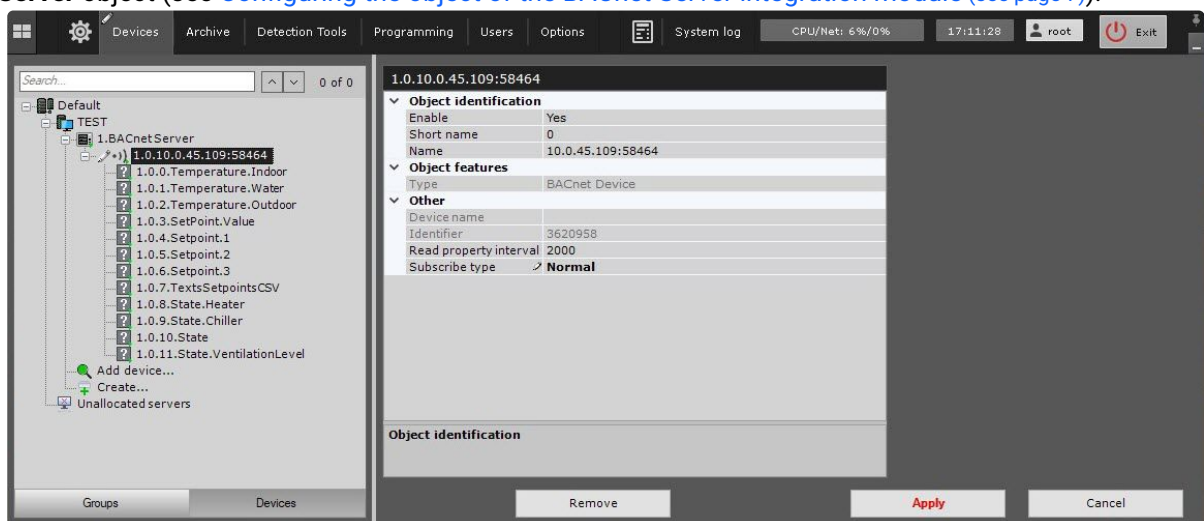
Configuration of the object of the **BACnet Server** integration module is complete. As a result, a hardware tree is read:



4.1 Configuring the device of the BACnet Server integration module

To configure the **BACnet Device** object of the **BACnet Server** integration module, do the following:

1. Go to the settings panel of the **BACnet Device** object that is created on the basis of the **BACnet Server** object (see [Configuring the object of the BACnet Server integration module \(see page 7\)](#)).



2. In the **Read property interval (ms)** field, specify the time interval in milliseconds for polling the BACnet server. This setting is valid only if you select the **Read property (not recommended)** value in the **Subscribe type** field.
3. In the **Subscribe type** field, select the mode of displaying the events of parameter change:
 - a. **Without subscribe**—events of parameter change aren't displayed.
 - b. **Normal**—all events of parameter change are displayed.
 - c. **Read property (not recommended)**—events of parameter change are displayed for the time interval specified in the **Read property interval (ms)** field.
4. Click the **Apply** button to save the settings.

Configuration of the **BACnet Device** object of the **BACnet Server** integration module is complete.

5 Working with the BACnet Server integration module

5.1 General information about working with the BACnet Server integration module

The **Map**, **Equipment Board**, and **Macro** interface objects are used to work with the **BACnet Server** integration module.

For the information on configuring these interface objects, see [Configuring the interactive map](#)³, [Configuring an Equipment Board](#)⁴ and [Programming](#)⁵.

For the information on working with these interface objects, see [Working with the interactive map](#)⁶, [Working with Equipment Board](#)⁷ and [Macros control](#)⁸.

5.2 Configuring macros when working with the BACnet Server integration module



[Programming](#)⁹

[Macros control](#)¹⁰

When working with the **BACnet Server** integration module, you can configure a macro that triggers when an event is received from **BACnet Server**.

When configuring a macro, you must select a specific object of the **BACnet Server** integration module.

³ <https://docs.axxonsoft.com/confluence/display/one20en/Configuring+the+interactive+map>

⁴ <https://docs.axxonsoft.com/confluence/display/one20en/Configuring+an+Equipment+Board>

⁵ <https://docs.axxonsoft.com/confluence/display/one20en/Programming>

⁶ <https://docs.axxonsoft.com/confluence/display/one20en/Working+with+the+interactive+map>

⁷ <https://docs.axxonsoft.com/confluence/display/one20en/Working+with+Equipment+Board>

⁸ <https://docs.axxonsoft.com/confluence/display/one20en/Macros+control>

⁹ <https://docs.axxonsoft.com/confluence/display/one20en/Programming>

¹⁰ <https://docs.axxonsoft.com/confluence/display/one20en/Macros+control>




Example of a configured macro:

The screenshot shows a configuration window for a macro. At the top, the 'Name' is 'Macrocommand' and the 'Working mode' is set to 'Always'. There is an 'Add to menu' checkbox which is unchecked. Below this is the 'Start conditions' section, which has a default of '1.BACnet Server'. The 'Start conditions' dropdown is set to 'Default: 1.BACnet Server' and the 'Event' dropdown is set to 'Connected'. There is an 'Add event filter' button. The 'ACFA: Execute action' section has a default of '1.BACnet Server: 1.0.10.0.45.109:58464: 1.0.0.Temperature.Indoor'. The 'Component' dropdown is set to 'Default: 1.BACnet Server: 1.0.10.0.45.109:58464: 1.0.0.Temperature.Indoor', the 'Action' dropdown is set to 'Set value', and the 'Value' field contains '1'.

5.3 Managing the object of the BACnet Server integration module

You cannot manage the object of the **BACnet Server** integration module in the **Map** and **Equipment Board** interface objects.




The following states of the object of the **BACnet Server** integration module are possible:

	Connected
	Disconnected
	Unknown

5.4 Managing the device of the BACnet Server integration module

You cannot manage the **BACnet Device** object of the **BACnet Server** integration module in the **Map** and **Equipment Board** interface objects.

The following states of the **BACnet Device** object of the **BACnet Server** integration module are possible:




	Connected
	Disconnected
	Unknown

5.5 Managing the property of the BACnet Server integration module

You can manage the property of the **BACnet Server** integration module in the **Map** and **Equipment Board** interface object using the function menu of the **BACnet Property** object. To open the menu of the **BACnet Property** object, right-click the corresponding object. Command to manage the property of the **BACnet Server** integration module is described in the table:

Menu command	Function
Set value	Set the value of the BACnet Server property

The following states of the **BACnet Property** object of the **BACnet Server** integration module are possible:

	Normal
	Alarm
	Unknown