



**Guide for configuring and working with the CORTEX WinSC
integration module**

Table of Contents

1	Introduction into the Guide for configuring and working with the CORTEX WinSC integration module.....	4
1.1	Purpose of the document.....	4
1.2	General information about the CORTEX WinSC integration module	4
2	Supported software and licensing of the CORTEX WinSC module	6
3	Adding the CORTEX WinSC integration module	7
4	Configuring the CORTEX WinSC integration module.....	8
4.1	Configuring the object of the CORTEX WinSC integration module.....	9
4.1.1	Configuring the zone of the CORTEX WinSC integration module.....	10
4.1.2	Configuring the output of the CORTEX WinSc integration module.....	11
5	Working with the CORTEX WinSC integration module	12
5.1	General information about working with the CORTEX WinSC integration module.....	12
5.2	Configuring macros when working with the CORTEX WinSC integration module.....	12
5.3	Managing the parent object of the CORTEX WinSC integration module.....	13
5.4	Managing the object of the CORTEX WinSC integration module	13
5.5	Managing the zone of the CORTEX WinSC integration module.....	14
5.6	Managing the output of the CORTEX WinSC integration module.....	15

1 Introduction into the Guide for configuring and working with the CORTEX WinSC integration module

On the page:

- [Purpose of the document \(see page 4\)](#)
- [General information about the CORTEX WinSC integration module \(see page 4\)](#)

1.1 Purpose of the document

The *Guide for configuring and working with the CORTEX WinSC integration module* is a reference and information manual and is intended for configuration specialists of the **CORTEX WinSC** integration module. This module is a part of the fire and security alarm (FSA) subsystem implemented on the basis of *Axxon One + ACFA*.

The Guide has the following information:

1. General information about the **CORTEX WinSC** integration module.
2. Adding the **CORTEX WinSC** integration module.
3. Configuring the **CORTEX WinSC** integration module.
4. Working with the **CORTEX WinSC** integration module.

1.2 General information about the CORTEX WinSC integration module

The **CORTEX WinSC** integration module is a part of the FSA implemented on the basis of *Axxon One + ACFA* that is used to configure the controller and provide interaction with *Axxon One + ACFA*. For detailed information about the **CORTEX WinSC** FSA, refer to the official reference documentation for this system (manufactured by KORTEKS, SIA).

Before configuring the **CORTEX WinSC** integration module, do the following:

1. Install the **CORTEX WinSC** hardware on the protected facility (see the official CORTEX reference documentation).
2. Connect the **CORTEX WinSC** controller to the *Axxon One + ACFA* server (see the official CORTEX reference documentation).

2 Supported software and licensing of the CORTEX WinSC module

Name of the integration module	CORTEX: WinSC (see page 4)
Integrated software, hardware	CORTEX Security Commander for Windows v5.xx to monitor fire and security alarm system in Windows OS
Functionality	Monitoring, control
Licensing	Per each zone (ACFASensor)
Information on manufacturer	KORTEKS, SIA Address: Liksnas street 7, Riga, LV-1003, Latvia Phone: +371 67 505 603 Fax: +371 67 505 604 Website: cortex.eu ¹ Email: sales@cortex.lv ² Support: support@cortex.lv ³
Type of integration	SOFT-SOFT
Hardware connection interface	NA
ACFA version	4.0 ⁴

¹ <https://cortex.eu/en/>

² <mailto:sales@cortex.lv>

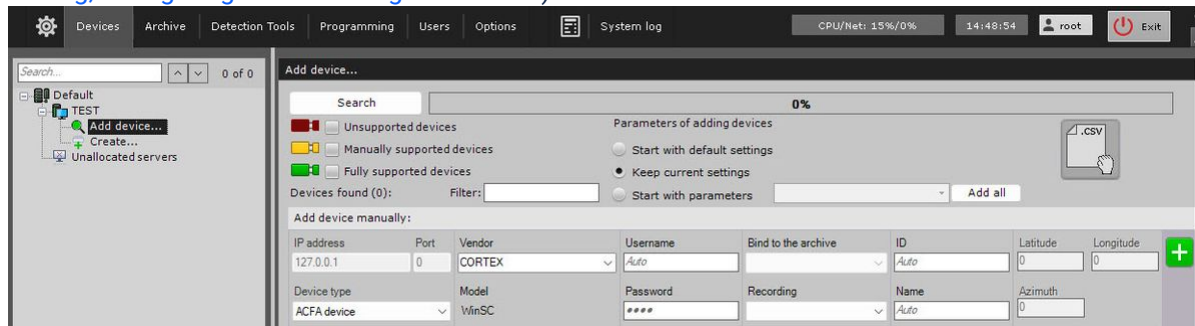
³ <mailto:support@cortex.lv>


⁴ <https://docs.axxonsoft.com/confluence/spaces/AxACFA10EN/pages/335973587/ACFA+4.0+Release+Notes>

3 Adding the CORTEX WinSC integration module

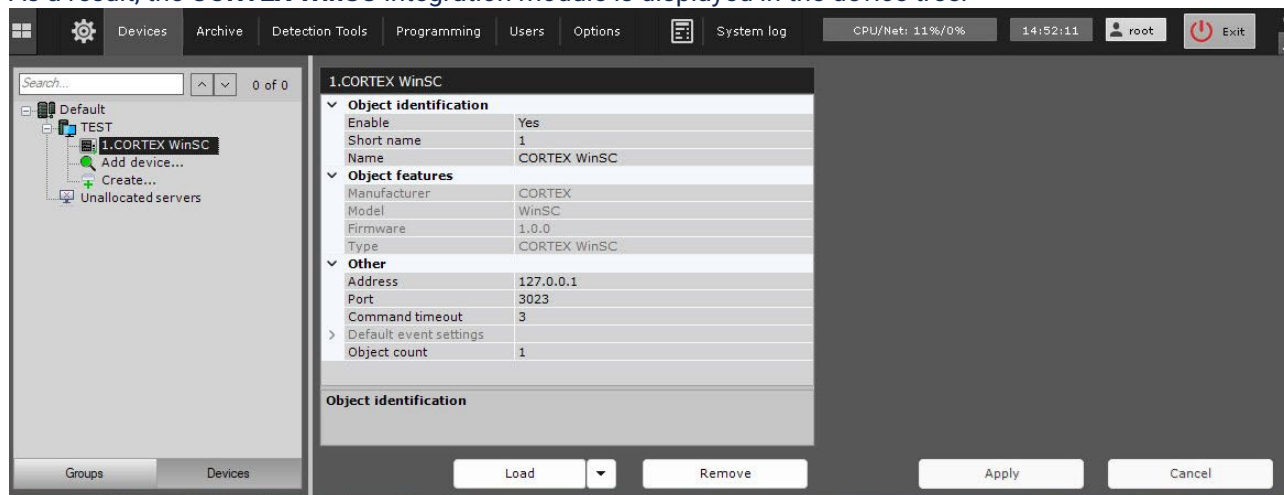
To add the **CORTEX WinSC** integration module to the system, do the following:

1. You can add the device to the system manually using the IP Device Discovery Wizard (see [Searching, adding, configuring and removing IP devices](#)⁵).



2. From the **Device type** drop-down list, select **ACFA device**.
3. From the **Vendor** drop-down list, select **CORTEX**. In the **Model** field, the **WinSC** model is selected by default.
4. Click the  button.

As a result, the **CORTEX WinSC** integration module is displayed in the device tree.

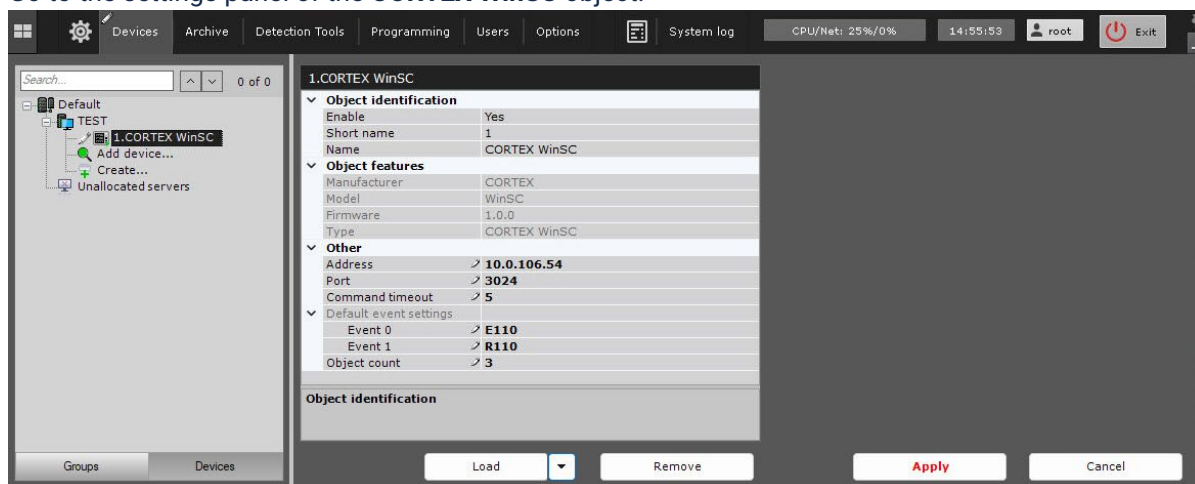



⁵ <https://docs.axxonsoft.com/confluence/spaces/one20en/pages/246484249/Searching+adding+configuring+and+removing+IP+devices>

4 Configuring the CORTEX WinSC integration module

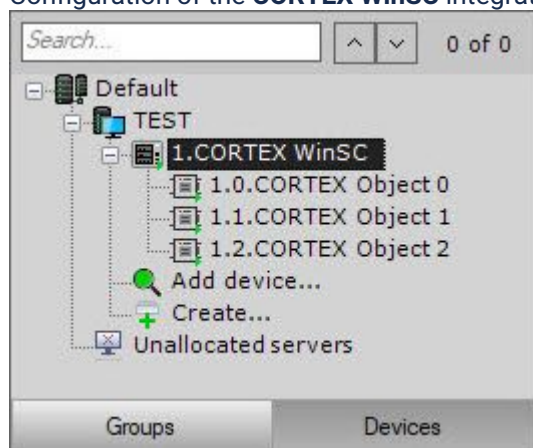
To configure the **CORTEX WinSC** integration module, do the following:

1. Go to the settings panel of the **CORTEX WinSC** object.



2. In the **Address** field, specify the IP address of the computer to connect the CORTEX Security Commander software to the *Axxon One + ACFA* server.
3. In the **Port** field, specify the number of the port to connect the CORTEX Security Commander software to the *Axxon One + ACFA* server. The default value is **3023**.
4. In the **Command timeout** field, specify in seconds the period during which the **CORTEX** controller waits for commands. The default value is **3**.
5. In the **Default event settings** field:
 - a. In the **Event 0** field, specify the event value from the CORTEX Security Commander software. The default value is **E**.
 - b. In the **Event 1** field, specify the event value from the CORTEX Security Commander software. The default value is **R**.
6. In the **Object count** field, specify the number of the objects created in the system when downloading the configuration. The default value is **1**.
7. Click the **Apply** button to save the changes.
8. Click the  button and select **Download configuration** from the drop-down list to download the configuration automatically and build the device tree.
9. Click the **Apply** button.

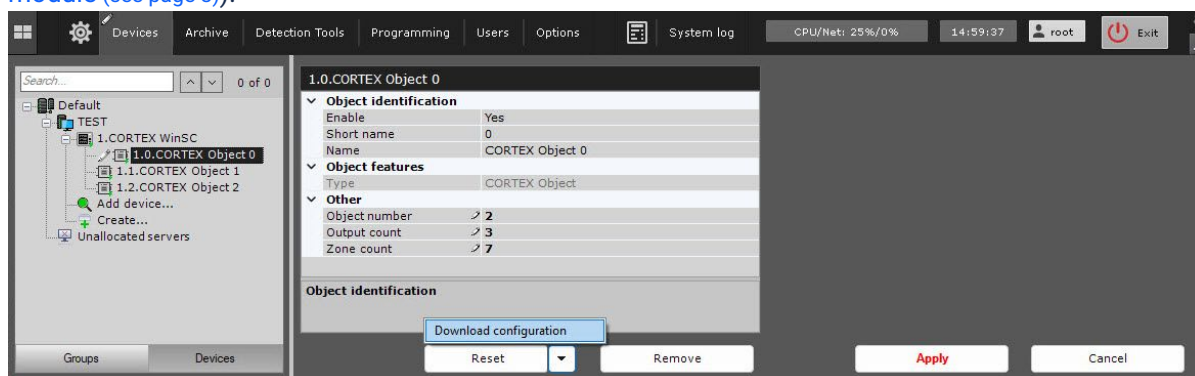
Configuration of the **CORTEX WinSC** integration module is complete. As a result, a device tree is built.




4.1 Configuring the object of the CORTEX WinSC integration module

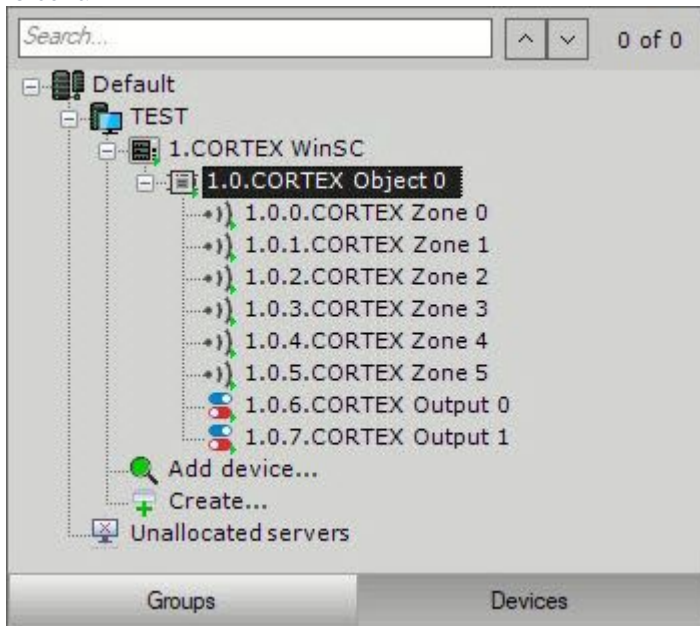
To configure the object of the **CORTEX WinSC** integration module, do the following:

1. Go to the settings panel of the **CORTEX Object** that is created on the basis of the **CORTEX WinSC** object after you download the configuration (see [Configuring the CORTEX WinSC integration module](#) (see page 8)).



2. In the **Output count** field, specify the number of outputs created on the basis of this object when downloading the configuration. The default value is **2**.
3. In the **Zone count** field, specify the number of zones created on the basis of this object when downloading the configuration. The default value is **6**.
4. In the **Object number** field, specify the object number in the system. The default value is **1**.
5. Click the **Apply** button to save the changes.
6. Click the  button and select **Download configuration** from the drop-down list to download the configuration automatically and build the device tree.
7. Click the **Apply** button.

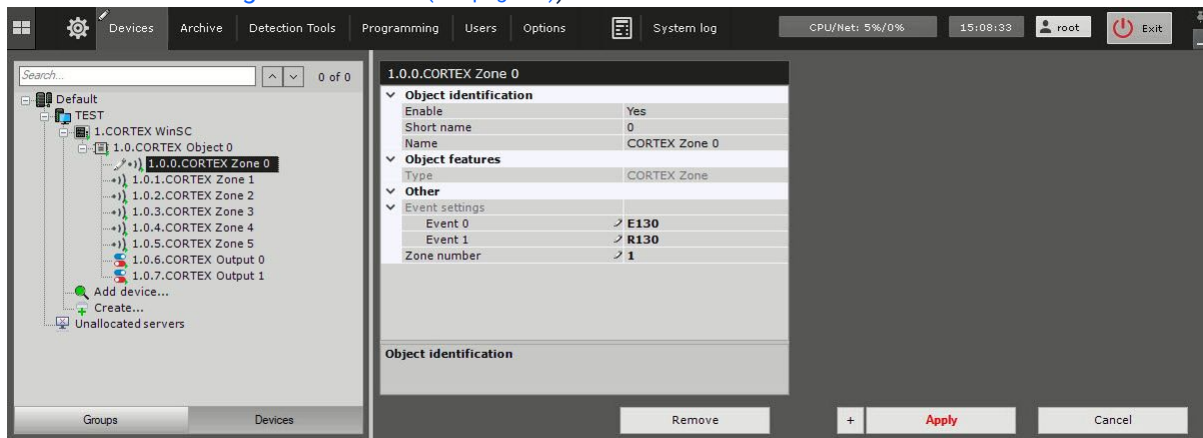
Configuration of the object of the **CORTEX WinSC** integration module is complete. As a result, a device tree is built.



4.1.1 Configuring the zone of the CORTEX WinSC integration module

To configure the zone of the **CORTEX WinSC** integration module, do the following:

1. Go to the settings panel of the **CORTEX Zone** object that is created on the basis of the **CORTEX Object** object after you download the configuration (see [Configuring the object of the CORTEX WinSC integration module](#) (see page 12)).



2. In the **Event settings** field:
 - a. In the **Event 0** field, specify the event value for this zone from the CORTEX Security Commander. The default value is **E**.
 - b. In the **Event 1** field, specify the event value for this zone from the CORTEX Security Commander. The default value is **R**.
3. In the **Zone number** field, specify the zone number in the system.

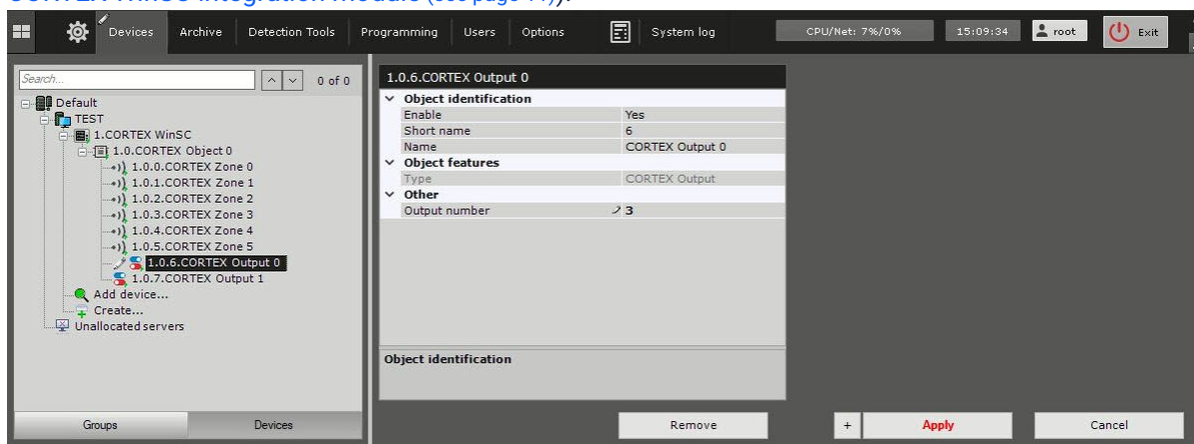
4. Click the **Apply** button to save the changes.

Configuration of the zone of the **CORTEX WinSC** integration module is complete.

4.1.2 Configuring the output of the CORTEX WinSc integration module

To configure the output of the **CORTEX WinSC** integration module, do the following:

1. Go to the settings panel of the **CORTEX Output** object that is created on the basis of the **CORTEX Object** object after you download the configuration (see [Configuring the object of the CORTEX WinSC integration module \(see page 11\)](#)).



2. In the **Output number** field, specify the output number in the system.
3. Click the **Apply** button to save the changes.

Configuration of the output of the **CORTEX WinSC** integration module is complete.

5 Working with the CORTEX WinSC integration module

5.1 General information about working with the CORTEX WinSC integration module

To work with the **CORTEX WinSC** integration module, use the **Map**, **Equipment Board** and **Macro** interface objects.

For the information on configuring these interface objects, see [Configuring the interactive map](#)⁶, [Configuring an Equipment Board](#)⁷, and [Programming](#)⁸.

For the information on working with these interface objects, see [Working with the interactive map](#)⁹, [Working with Equipment Board](#)¹⁰, and [Macros control](#)¹¹.

5.2 Configuring macros when working with the CORTEX WinSC integration module



[Programming](#)¹²

[Macros control](#)¹³

When working with the **CORTEX WinSC** integration module, you can configure a macro that triggers when an event is received from **CORTEX WinSC**.

When configuring a macro, you must select a specific object of the **CORTEX WinSC** integration module.

⁶ <https://docs.axxonsoft.com/confluence/spaces/one20en/pages/246485351/Configuring+the+interactive+map>

⁷ <https://docs.axxonsoft.com/confluence/spaces/one20en/pages/260925539/Configuring+an+Equipment+Board>

⁸ <https://docs.axxonsoft.com/confluence/spaces/one20en/pages/246485013/Programming>

⁹ <https://docs.axxonsoft.com/confluence/spaces/one20en/pages/246486362/Working+with+the+interactive+map>

¹⁰ <https://docs.axxonsoft.com/confluence/spaces/one20en/pages/260925544/Working+with+Equipment+Board>

¹¹ <https://docs.axxonsoft.com/confluence/spaces/one20en/pages/246486481/Macros+control>

¹² <https://docs.axxonsoft.com/confluence/spaces/one20en/pages/246485013/Programming>




¹³ <https://docs.axxonsoft.com/confluence/spaces/one20en/pages/246486481/Macros+control>

Example of a configured macro:

5.3 Managing the parent object of the CORTEX WinSC integration module

You cannot manage the parent object of the **CORTEX WinSC** integration module in the **Map** and **Equipment Board** interface objects.

The parent object of the **CORTEX WinSC** integration module can have the following states:




	Unknown
	Connection established
	Connection lost

5.4 Managing the object of the CORTEX WinSC integration module

You can manage the object of the **CORTEX WinSC** integration module using the menu of the **CORTEX Object** object in the **Map** and **Equipment Board** interface objects. To open the **CORTEX Object** object menu, right-click the required object. Commands to manage the object of the **CORTEX WinSC** integration module are described in the table:

Menu command	Function
STAY arming	Leave the object armed. In the window that opens, do the following: <ol style="list-style-type: none"> 1. In the Security code field, enter the code from the CORTEX Security Commander software 2. Click the OK button
AWAY arming	Arm the object. In the window that opens, do the following: <ol style="list-style-type: none"> 1. In the Security code field, enter the code from the CORTEX Security Commander software 2. Click the OK button
Disarming	Disarm the object. In the window that opens, do the following: <ol style="list-style-type: none"> 1. In the Security code field, enter the code from the CORTEX Security Commander software 2. Click the OK button


The **CORTEX Object** object of the **CORTEX WinSC** integration module can have the following states:



	Unknown
	Connection established
	Connection lost

5.5 Managing the zone of the CORTEX WinSC integration module

You cannot manage the zone of the **CORTEX WinSC** integration module in the **Map** and **Equipment Board** interface objects.

The **CORTEX Zone** object of the **CORTEX WinSC** integration module can have the following states:

	Unknown
---	---------

	Connection established
	Connection lost

5.6 Managing the output of the CORTEX WinSC integration module

You can manage the output of the **CORTEX WinSC** integration module using the menu of the **CORTEX Output** object in the **Map** and **Equipment Board** interface outputs. To open the **CORTEX Output** object menu, right-click the required object. Commands to manage the output of the **CORTEX WinSC** integration module are described in the table:

Menu command	Function
Turn output on	Turn on the output
Turn output off	Turn off the output

The **CORTEX Output** object of the **CORTEX WinSC** integration module can have the following states:

	Unknown
	Connection established
	Connection lost