



**Guide for configuring and working with the Paxton Net2
integration module**

Table of Contents

1	Introduction into the Guide for configuring and working with the Paxton integration module.....	4
1.1	Purpose of the document.....	4
1.2	General information about the Paxton integration module.....	4
2	Supported hardware and licensing of the Paxton integration module.....	6
3	Adding the Paxton integration module.....	7
4	Configuring the object of the Paxton integration module.....	8
5	Working with the Paxton integration module.....	10
5.1	General information about working with the Paxton integration module	10
5.2	Configuring macros when working with the Paxton integration module	10
5.3	Managing the object of the Paxton integration module.....	11
5.4	Managing the door of the Paxton integration module	12
5.5	Managing the reader of the Paxton integration module	13

1 Introduction into the Guide for configuring and working with the Paxton integration module

On the page:

- [Purpose of the document](#)
- [General information about the Paxton integration module](#)

1.1 Purpose of the document

The *Guide for configuring and working with the Paxton integration module* is a reference and information manual and is intended for configuration specialists and operators of the **Paxton** integration module. This module is a part of the access control system (ACS) implemented on the basis of *ACFA*.

The Guide has the following information:

1. General information about the **Paxton** integration module.
2. Adding the **Paxton** integration module.
3. Configuring the **Paxton** integration module.
4. Working with the **Paxton** integration module.

1.2 General information about the Paxton integration module

The **Paxton** integration module is a part of the ACS implemented on the basis of *ACFA* and is used to control the hardware of the **Paxton** system.



Note

For detailed information about the **Paxton** ACS, see the official reference documentation for this system (manufactured by Paxton Access Ltd.).

Before working with the **Paxton** integration module, you must do the following:

1. Install the **Paxton** ACS hardware on the protected facility (see the official reference documentation).
2. Configure the **Paxton** ACS in the Net2 software (see the official reference documentation).
3. Connect the **Paxton** integration module to the *Axxon One* server.

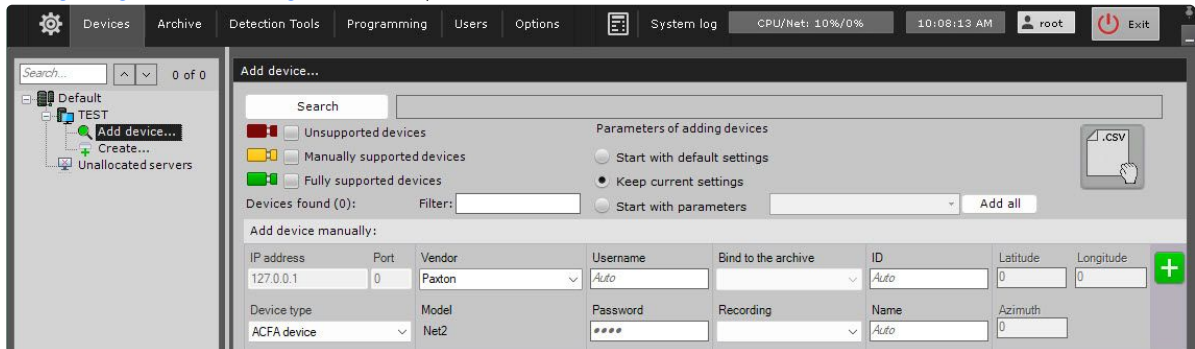
2 Supported hardware and licensing of the Paxton integration module

Name of the integration module	Paxton Net2
Integrated software, hardware	Net2 software versions 6.7.13307.4930
Functionality	Monitoring, control
Licensing	Per each reader (ACFAReader)
Information on manufacturer	<p>Paxton Access Ltd. Address: Paxton House, Home Farm Road, Brighton, East Sussex, BN1 9HU Phone: 01273 811011 Operating mode: 7am to 7pm Monday to Friday, 9am to 1pm Saturday Website: www.paxton-access.com Email: support@paxton.co.uk</p>
Type of integration	SOFT-SOFT
Hardware connection interface	NA
ACFA version	3.0

3 Adding the Paxton integration module

To add the **Paxton** integration module to the system, do the following:

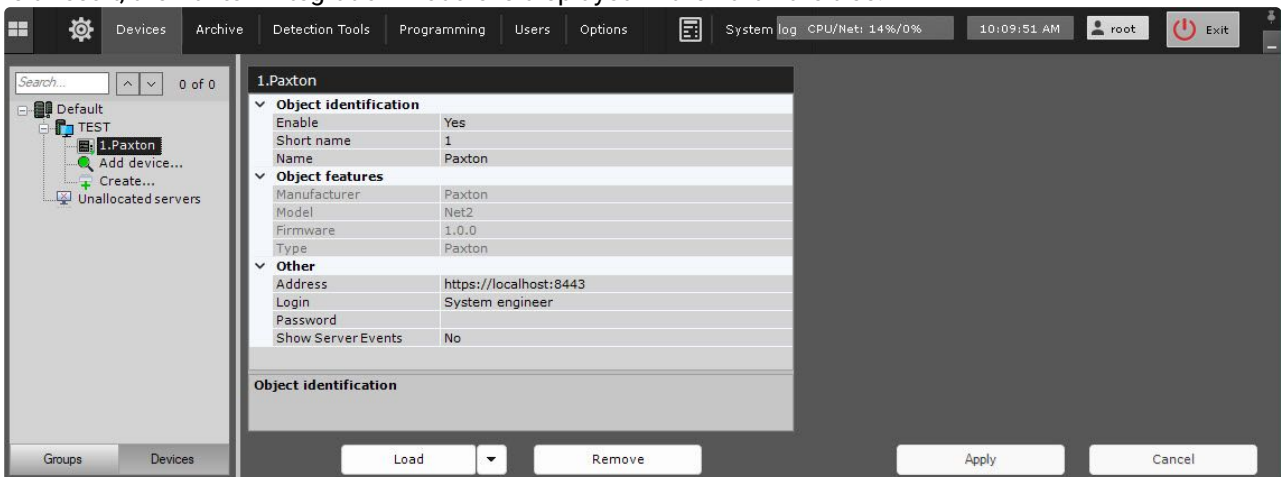
1. Add the device to the system manually using the IP Device Discovery Wizard (see [Searching, adding, configuring and removing IP devices](#)).



2. From the **Device type** drop-down list, select **ACFA device**.
3. From the **Vendor** drop-down list, select **Paxton**. In the **Model** field, the **Net2** model is selected by default.

4. Click the  button.

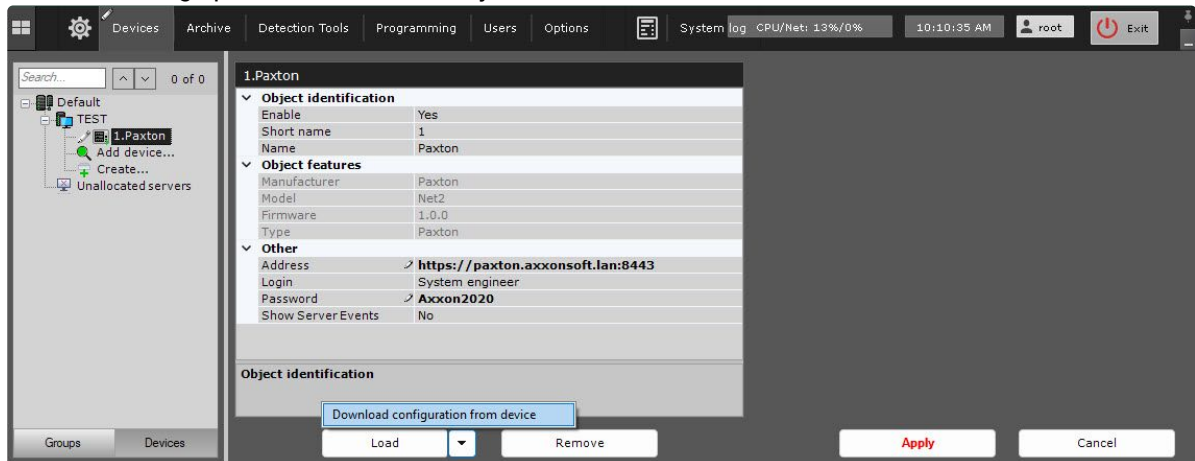
As a result, the **Paxton** integration module is displayed in the hardware tree.




4 Configuring the object of the Paxton integration module

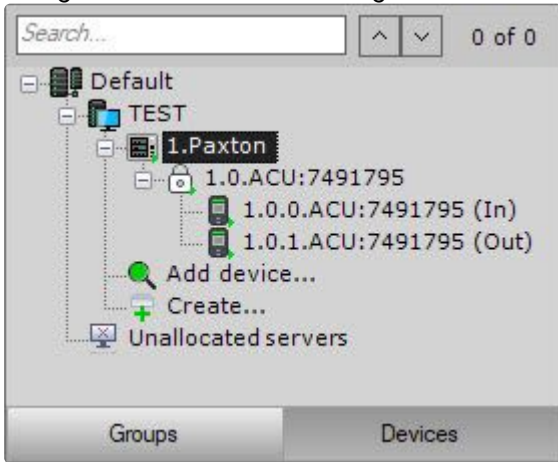
To configure the **Paxton** integration module, do the following:

1. Go to the settings panel of the **Paxton** object.



2. In the **Address** field, enter the address of the connection to the Net2 software.
3. In the **Login** field, enter the login of the Net2 software user.
4. In the **Password** field, enter the password of the Net2 software user.
5. In the **Show Server Events** field, select the **Yes** value if you want to receive additional events from the Net2 software. The default value is **No**.
6. Click the **Apply** button to save the changes.
7. Click the  button and select **Download configuration from device** to automatically download the configuration and build the hardware tree.
8. Click the **Apply** button.

Configuration of the **Paxton** integration module is complete. As a result, a hardware tree is built:



5 Working with the Paxton integration module

5.1 General information about working with the Paxton integration module

The **Map**, **Equipment Board**, and **Macro** interface objects are used to work with the **Paxton** integration module.

For the information on configuring these interface objects, see [Configuring the interactive map](#), [Configuring an Equipment Board](#), and [Programming](#).

For the information on working with these interface objects, see [Working with the interactive map](#), [Working with Equipment Board](#), and [Macros control](#).

5.2 Configuring macros when working with the Paxton integration module



[Programming](#)

[Macros control](#)

When working with the **Paxton** integration module, you can configure a macro that will trigger when an event is received from **Paxton**.

When configuring a macro, you must select a specific object of the **Paxton** integration module.

Example of a configured macro:

Name: Working mode: ▼

Add to menu

Start conditions

Default: 1.Paxton: 1.0.ACU:7491795: 1.0.0.ACU:7491795 (In)

Start conditions: ▼ -

Event: ▼

+ Add event filter

ACFA: Execute action ✕ +

Default: 1.Paxton: 1.0.ACU:7491795






Component: ▼

Action: ▼

5.3 Managing the object of the Paxton integration module

You cannot manage the object of the **Paxton** integration module in the **Map** and **Equipment Board** interface objects.

The object of the **Paxton** integration module can have the following states:






	Connected
	Disconnected
	Unknown state
	Error
	Disabled




5.4 Managing the door of the Paxton integration module

You can manage the door of the **Paxton** integration module in the **Map** and **Equipment Board** interface objects using the menu of the **Paxton door** object. To open the menu of the **Paxton door** object, right-click the required object. Commands to manage the door of the **Paxton** integration module are described in the table:

Menu command	Function
Ack Alarm	Process the door alarm, reset the door to a normal state
Close door	Close the door
Open door	Open the door
Open permanent	Open the door for an unlimited time
Open Relay 1	Open the relay 1
Open Relay 2	Open the relay 2

The **Paxton door** object of the **Paxton** integration module can have the following states:



	Normal
	Power supply error
	Open controller box
	Door contact open
	Alarm

	Door Relay Open
	Intruder Alarm Armed
	Disconnected

5.5 Managing the reader of the Paxton integration module

You cannot manage the reader of the **Paxton** integration module in the **Map** and **Equipment Board** interface objects.

The **Paxton reader** object of the **Paxton** integration module can have the following states:

	Normal
	Disconnected