



**Guide for configuring and working with the SALTO
ProAccess SPACE integration module**

Table of Contents

1	List of terms used in the Guide for configuring and working with the SALTO integration module.....	4
2	Introduction into the Guide for configuring and working with the SALTO integration module.....	6
2.1	Purpose of the document.....	6
2.2	General information about the SALTO integration module	6
3	Supported software and licensing of the SALTO integration module	8
4	Adding the SALTO integration module.....	9
5	Configuring the SALTO integration module	10
6	Working with the SALTO integration module.....	12
6.1	General information about working with the SALTO integration module	12
6.2	Configuring macros when working with the SALTO integration module	12
6.3	Managing the object of the SALTO integration module.....	13
6.4	Managing the door/reader of the SALTO integration module	13
6.5	Managing the zone of the SALTO integration module.....	15
6.6	Managing the encoder of the SALTO integration module	15

1 List of terms used in the Guide for configuring and working with the SALTO integration module

Term	Description
Time schedule	A set of any number of time intervals within each day of a time cycle (from 1 to 366 days), as well as time intervals during special dates. Time schedule defines a schedule of access to the protected facility
Access	Movement of users, transportation and other objects to (from) premises, buildings, areas, and territories
Access identifier	A key (physical or digital) using which you can access the premises, buildings, areas, and territories
Access card	A physical access identifier that is registered by the reader
Client	Computer with installed Client configuration of <i>Axxon One</i>
Controller	An electronic device used to monitor and control access points
ACS	Access Control System is a hardware and software complex used to perform access control and management functions
Server	Computer with installed Server configuration of <i>Axxon One</i>
Readers	Electronic devices used to enter a memorized code from a keyboard or read a code information from system keys (identifiers)
Access point	A place where access control is performed. An access point can be a door, turnstile, gate, barrier equipped with a reader, electromechanical lock, and other means of access control
Encoder	An electronic device used to assign access cards to users
PPD	Portable programming device is a device used to transfer data between SALTO devices and computer

Term	Description
SHIP	Salto Host Interface Protocol is the protocol by which the SALTO ACS manufacturer's software works with third-party software

2 Introduction into the Guide for configuring and working with the SALTO integration module

On the page:

- [Purpose of the document \(see page 6\)](#)
- [General information about the SALTO integration module \(see page 6\)](#)

2.1 Purpose of the document

The *Guide for configuring and working with the SALTO integration module* is a reference and information manual and is intended for configuration specialists and operators of the **SALTO** module. This module is as a part of the access control system implemented on the basis of *ACFA*.

The Guide has the following information:

1. General information about the **SALTO** integration module.
2. Adding the **SALTO** integration module.
3. Configuring the **SALTO** integration module.
4. Working with the **SALTO** integration module.

2.2 General information about the SALTO integration module

The **SALTO** integration module is a part of the ACS implemented on the basis of *ACFA* and is used to perform the following functions:

1. Configuration of the **SALTO** ACS (manufacturer SALTO Systems). For detailed information on the **SALTO** ACS, see the official reference documentation for this system.
2. Providing interaction of the **SALTO** ACS with *ACFA* (monitoring, control). You can remotely control the **SALTO** module from the Clients of a distributed system based on *ACFA*.



Attention!

For the **SALTO** integration module to operate, the computer on which the *ACFA* Server is installed and the computer on which the **SALTO** ACS manufacturer's software is installed must be on the same network.

Before working with the **SALTO** integration module, you must do the following:

1. Install the **SALTO** ACS hardware on the protected facility (see the official **SALTO** ACS reference documentation).
2. Configure the **SALTO** ACS in the manufacturer's software (see the official reference documentation).
3. Connect the **SALTO** ACS to the Server.

3 Supported software and licensing of the SALTO integration module

Name of the integration module	SALTO: ProAccess SPACE (see page 4)
Integrated software, hardware	SALTO ProAccess SPACE version 6.10.3.1
Functionality	Monitoring, control
Licensing	Per each: <ul style="list-style-type: none"> • door (ACFARreader) • encoder (ACFARreader)
Information on manufacturer	SALTO Systems, S.L Address: Pol. Lanbarren C/ Arkotz, 9 20180 Oiartzun Spain Phone: +34 943 344 550 Website: www.saltosystems.com ¹
Type of integration	SOFT-SOFT
Hardware connection interface	NA
ACFA version	1.0 ²

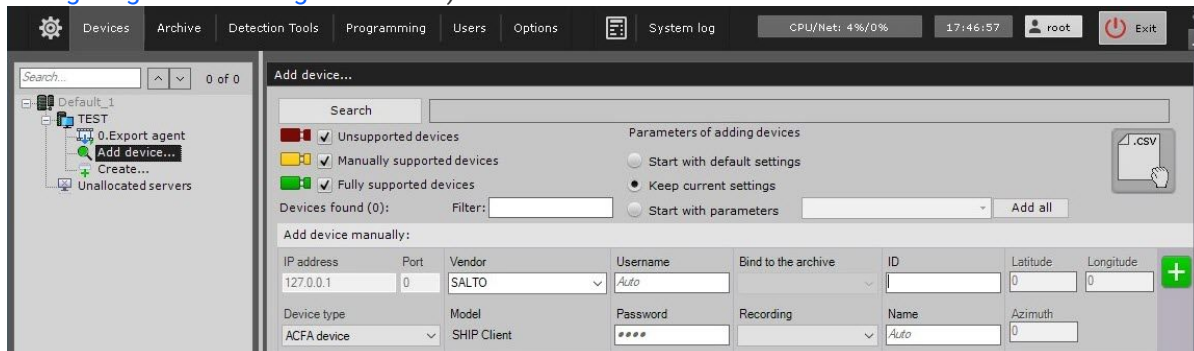
¹ <http://www.saltosystems.com>

² <https://docs.axxonsoft.com/confluence/display/AxACFA10EN/ACFA+1.0+Release+Notes>

4 Adding the SALTO integration module

To add the **SALTO** integration module to the system, do the following:

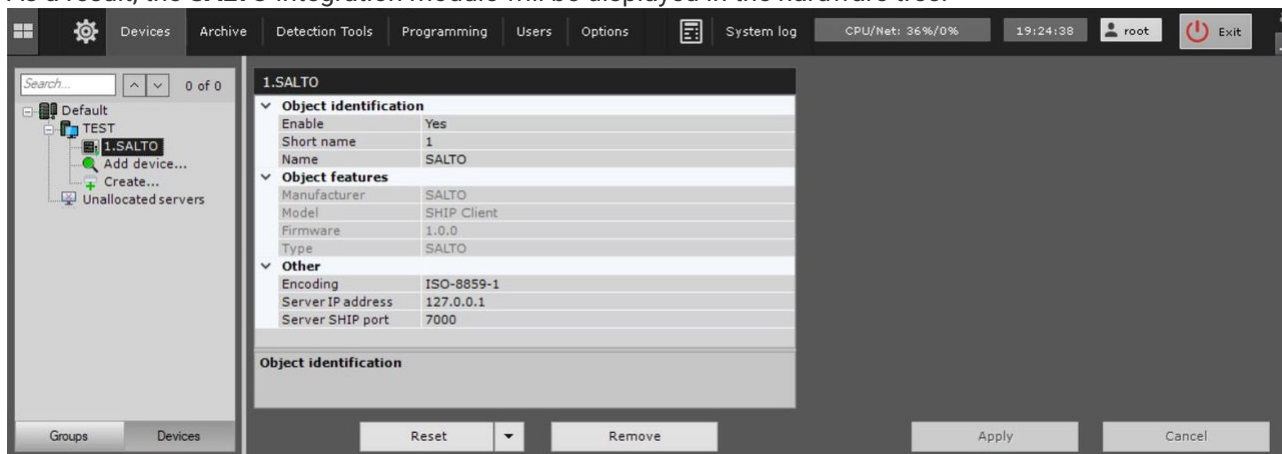
1. Add the device to the system manually using the IP Device Discovery Wizard (see [Searching, adding, configuring and removing IP devices](#)³).



2. From the **Device type** drop-down list, select the **ACFA device**.
3. From the **Vendor** drop-down list, select **SALTO**. In the **Model** field, the **SHIP Client** model will be selected by default.

4. Click the  button.

As a result, the **SALTO** integration module will be displayed in the hardware tree.

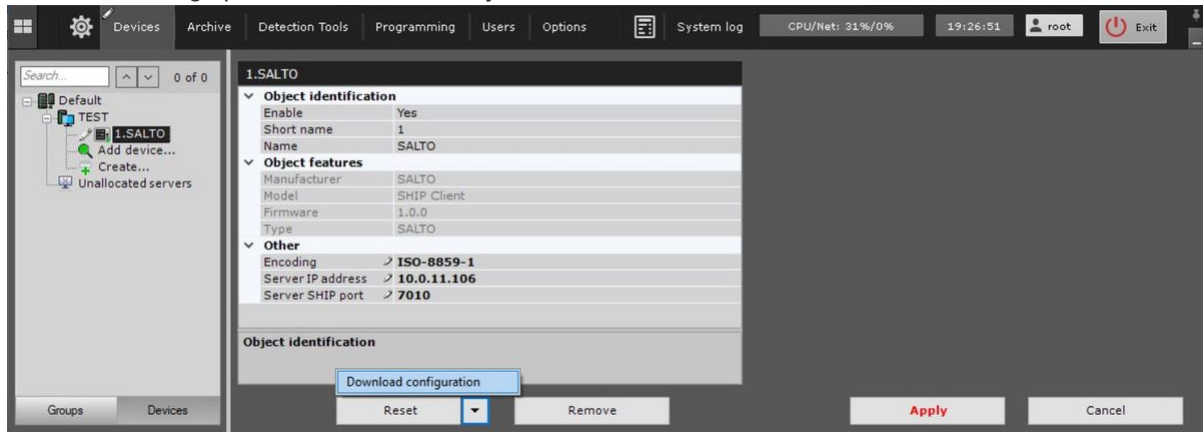



³ <https://docs.axxonsoft.com/confluence/spaces/one20en/pages/246484249/Searching+adding+configuring+and+removing+IP+devices>

5 Configuring the SALTO integration module

To configure the **SALTO** integration module, do the following:

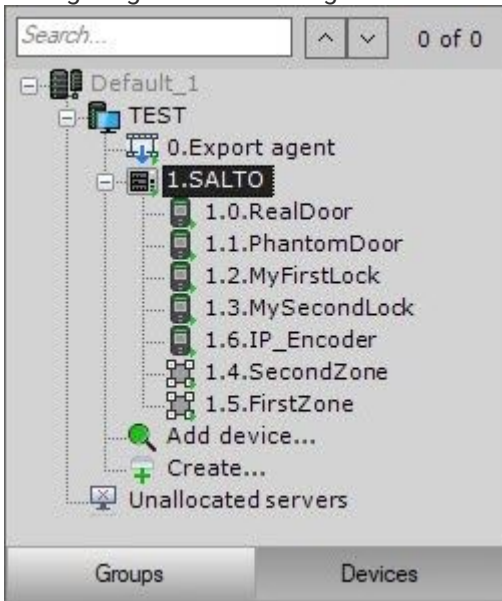
1. Go to the settings panel of the **SALTO** object.



2. In the **Encoding** field from the drop-down list, select the encoding for the correct display of characters:
 - a. **UTF-8**.
 - b. **ISO-8859-1** (by default).
3. In the **Server IP address** field, specify the IP address of the computer on which the **SALTO** ProAccess Space Service software is installed.
4. In the **Server SHIP port** field, specify the port number of the SHIP client that is configured in the **SALTO** ProAccess Space Service software. You can see the port number in the settings of the [Web client ProAccess Space Service](#)⁴.
5. Click the **Apply** button to save the changes.
6. Click the  button and select **Download configuration** from the drop-down list to automatically download the configuration and build the hardware tree.
7. Click the **Apply** button.

⁴ <https://support.saltosystems.com/es/space/user-guide/operator/general-options/ship/>

Configuring the **SALTO** integration module is complete. As a result, a hardware tree will be built:



6 Working with the SALTO integration module

6.1 General information about working with the SALTO integration module

The **Map**, **Equipment Board** and **Macro** interface objects are used to work with the **SALTO** integration module.

For the information on configuring these interface objects, see [Configuring the interactive map](#)⁵, [Configuring an Equipment Board](#)⁶ and [Programming](#)⁷.

For the information on working with these interface objects, see [Working with the interactive map](#)⁸, [Working with Equipment Board](#)⁹ and [Macros control](#)¹⁰.

6.2 Configuring macros when working with the SALTO integration module



[Programming](#)¹¹

[Macros control](#)¹²

When working with the **SALTO** integration module, you can configure a macro that will trigger when an event is received from **SALTO**.

When configuring a macro, you must select a specific object of the **SALTO** integration module.

5 <https://docs.axxonsoft.com/confluence/spaces/one20en/pages/246485351/Configuring+the+interactive+map>

6 <https://docs.axxonsoft.com/confluence/spaces/one20en/pages/260925539/Configuring+an+Equipment+Board>

7 <https://docs.axxonsoft.com/confluence/spaces/one20en/pages/246485013/Programming>

8 <https://docs.axxonsoft.com/confluence/spaces/one20en/pages/246486362/Working+with+the+interactive+map>

9 <https://docs.axxonsoft.com/confluence/spaces/one20en/pages/260925544/Working+with+Equipment+Board>

10 <https://docs.axxonsoft.com/confluence/spaces/one20en/pages/246486481/Macros+control>

11 <https://docs.axxonsoft.com/confluence/spaces/one20en/pages/246485013/Programming>

12 <https://docs.axxonsoft.com/confluence/spaces/one20en/pages/246486481/Macros+control>

Example of a configured macro:

Name: Working mode:

Add to menu

Start conditions
 Default_1: 1.SALTO

Start conditions:

Add event filter

ACFA: Execute action
 Default_1: 1.SALTO: 1.0.RealDoor



Component:

Action:

6.3 Managing the object of the SALTO integration module

You cannot manage the object of the **SALTO** integration module in the **Map** and **Equipment Board** interface objects.

The following states of the object of the **SALTO** integration module are possible:






	Connection established
	No connection



6.4 Managing the door/reader of the SALTO integration module

You can manage the door/reader of the **SALTO** integration module in the **Map** and **Equipment Board** interface objects using the menu of the **SALTO Door/Reader** object. To display the menu of the **SALTO Door/Reader** object, right-click the required object. Commands to manage the door/reader of the **SALTO** integration module are described in the table:

Menu command	Function
Emergency close	Emergency door closing. After emergency closing, the door is locked, closed and cannot be opened
Emergency open	Emergency door opening. After emergency opening, the door doesn't close automatically
End emergency	Switching the door from emergency to standby mode
Open	Door opening

The following states of the **SALTO Door/Reader** object of the **SALTO** integration module are possible:

	Unknown state
	Alarm: tamper
	Opened
	Closed
	Emergency open
	Emergency close
	Alarm: Intrusion

	Initializing
	Left opened

6.5 Managing the zone of the SALTO integration module

You cannot manage the zone of the **SALTO** integration module in the **Map** and **Equipment Board** interface objects.

The following state of the **SALTO Zone** object of the **SALTO** integration module is possible:

	Default state
	Unknown

6.6 Managing the encoder of the SALTO integration module

You cannot manage the encoder of the **SALTO** integration module in the **Map** and **Equipment Board** interface objects.

The following state of the **SALTO Encoder** object of the **SALTO** integration module is possible:

	Default state
	Unknown