



**Guide for configuring and working with the SNMP Agent
integration module**

Table of Contents

1	Introduction into the Guide for configuring and working with the SNMP Agent integration module.....	4
1.1	Purpose of the document.....	4
1.2	General information about the SNMP Agent integration module.....	4
2	Supported software and licensing of the SNMP Agent integration module	5
3	Adding the SNMP Agent integration module	6
4	Configuring the SNMP Agent integration module	7
4.1	Configuring the SNMP Value of the SNMP Agent integration module.....	9
5	Working with the SNMP Agent integration module	11
5.1	General information about working with the SNMP Agent integration module ..	11
5.2	Configuring macros when working with the SNMP Agent integration module ..	11
5.3	Managing the object of the SNMP Agent integration module	12
5.4	Managing the SNMP Value of the SNMP Agent integration module	12

1 Introduction into the Guide for configuring and working with the SNMP Agent integration module

On the page:

- [Purpose of the document \(see page 4\)](#)
- [General information about the SNMP Agent integration module \(see page 4\)](#)

1.1 Purpose of the document

The *Guide for configuring and working with the SNMP Agent integration module* is a reference and information manual and is intended for configuration specialists and operators of the **SNMP Agent** integration module.

The Guide has the following information:

1. General information about the **SNMP Agent** integration module.
2. Adding the **SNMP Agent** integration module.
3. Configuring the **SNMP Agent** integration module.
4. Working with the **SNMP Agent** integration module.

1.2 General information about the SNMP Agent integration module

The **SNMP Agent** integration module can exchange data and receive events via SNMP protocol v.1, v.2 and v.3.

2 Supported software and licensing of the SNMP Agent integration module

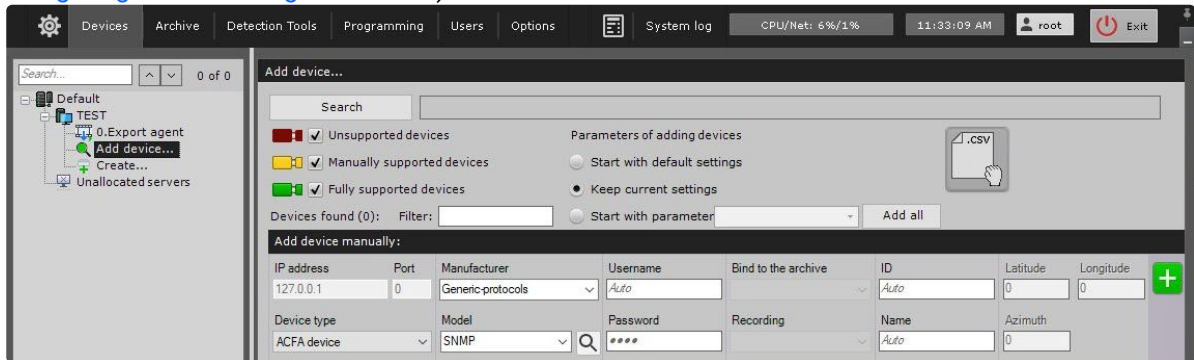
Name of the integration module	SNMP Agent (see page 4)
Functionality	Module can exchange data and receive events via SNMP protocol v.1, v.2 and v.3
Licensing	Per each SNMP value (ACFASensor)
Type of integration	SNMP
ACFA version	2.0 ¹


¹ <https://docs.axxonsoft.com/confluence/display/AxACFA10EN/ACFA+2.0+Release+Notes>

3 Adding the SNMP Agent integration module

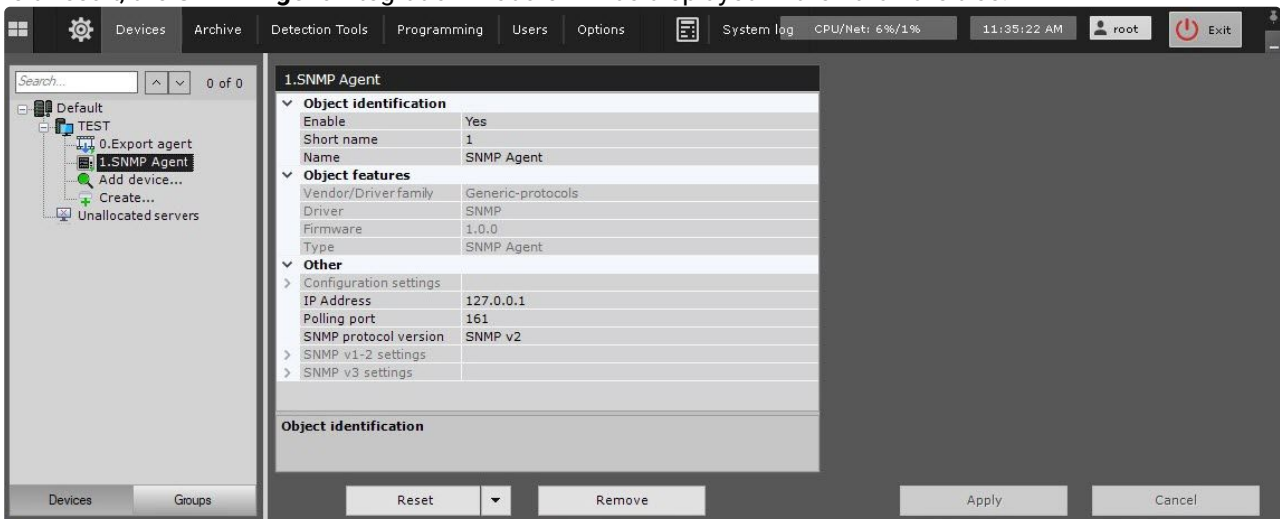
To add the **SNMP Agent** integration module to the system, do the following:

1. Add the device to the system manually using the IP Device Discovery Wizard (see [Searching, adding, configuring and removing IP devices](#)²).



2. From the **Device type** drop-down list, select the **ACFA device**.
3. From the **Manufacturer** drop-down list, select **Generic-protocols**.
4. From the **Model** drop-down list, select **SNMP**.
5. Click the  button.

As a result, the **SNMP Agent** integration module will be displayed in the hardware tree.

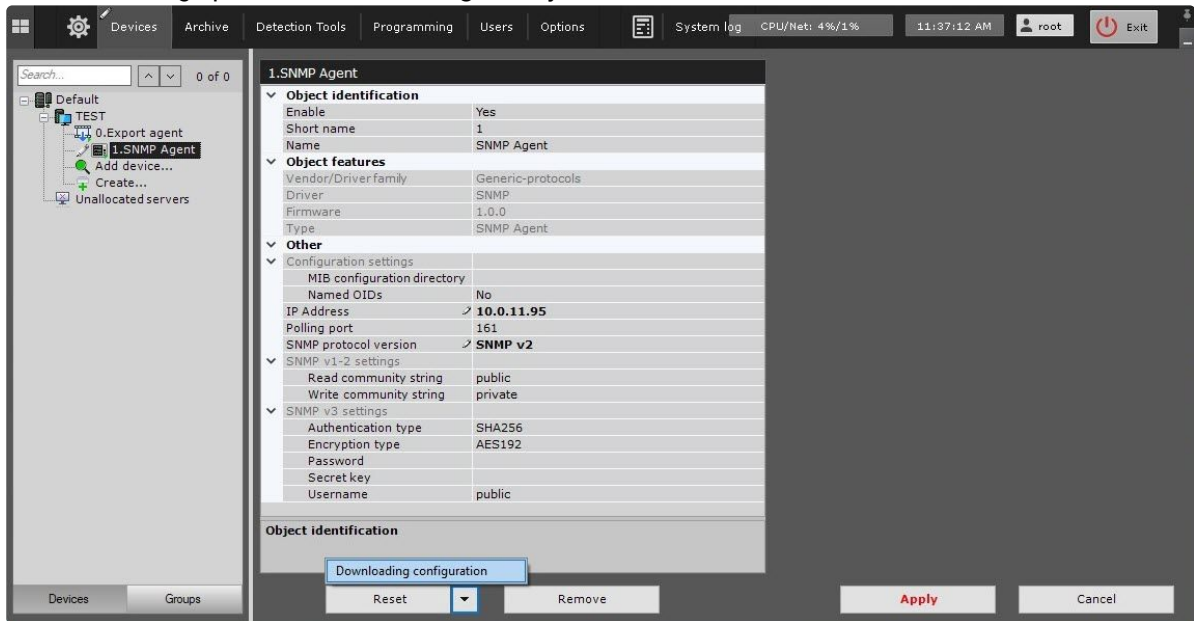


² <https://docs.axsonsoft.com/confluence/display/one20en/Searching%2C+adding%2C+configuring+and+removing+IP+devices>

4 Configuring the SNMP Agent integration module

To configure the **SNMP Agent** integration module, do the following:

1. Go to the settings panel of the **SNMP Agent** object.




2. If you want to configure the configuration download, expand the **Configuration settings** parameter list:
 - a. In the **MIB configuration directory** field, specify the path to the folder with MIB configurations.
 - b. To use named OIDs, in the **Named OIDs** field, select the **Yes** value. By default, the **No** value is selected.
3. In the **IP Address** field, specify the IP address in the network of the device that is connected via SNMP protocol.
4. In the **Polling port** field, specify the number of the port that you use. The default number is **161**.
5. From the **SNMP protocol version** drop-down list, select the version of SNMP protocol:

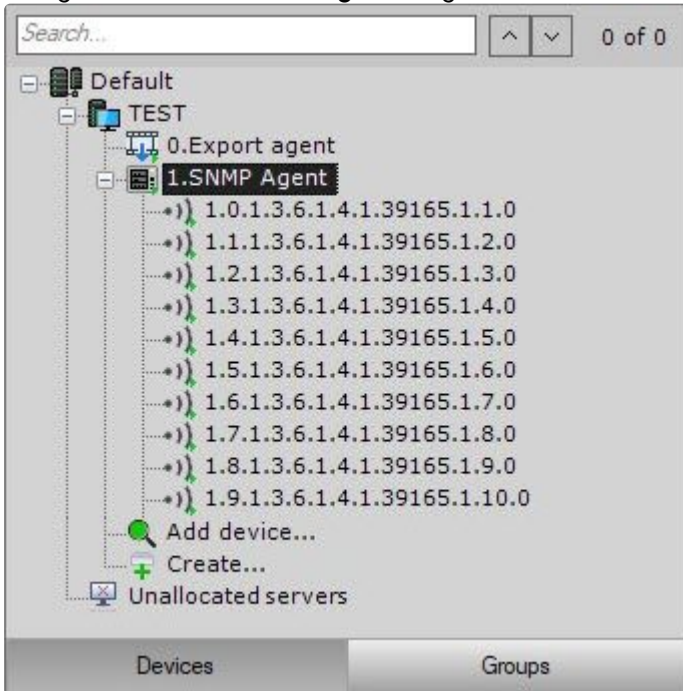
Attention!

You must select the version of SNMP protocol according to the technical requirements of the connected device (see the official documentation for the device).

- a. **SNMP v1**,
- b. **SNMP v2**,
- c. **SNMP v3**.

6. Depending on the selected version of SNMP protocol, make the appropriate settings.
 - a. To configure the **SNMP v1** and **SNMP v2** versions, expand the **SNMP v1-2 settings** parameter list:
 - i. In the **Read community string** field, specify the name of the SNMP read community from the web interface settings of the device connected via SNMP protocol.
 - ii. In the **Write community string** field, specify the name of the SNMP write community from the web interface settings of the device connected via SNMP protocol.
 - b. To configure the **SNMP v3** version, expand the **SNMP v1-2 settings** parameter list:
 - i. From the **Authentication type** drop-down list, select the authentication type from the web interface settings of the device connected via SNMP protocol:
 1. **SHA256** (default),
 2. **SHA384**,
 3. **SHA512**,
 4. **MD5**,
 5. **SHA1**.
 - ii. From the **Encryption type** drop-down list, select the encryption type from the web interface settings of the device connected via SNMP protocol:
 1. **AES192** (default),
 2. **AES256**,
 3. **AES**,
 4. **DES**,
 5. **TripleDES**.
 - iii. In the **Password** field, specify the user password from the web interface settings of the device connected via SNMP protocol.
 - iv. In the **Secret key** field, specify the secret key from the web interface settings of the device connected via SNMP protocol.
 - v. In the **Username** field, specify the username from the web interface settings of the device connected via SNMP protocol.
7. Click the **Apply** button to save the changes.
8. To automatically download the configuration and build the hardware tree, click the  button and select **Download configuration** from the drop-down list.
9. Click the **Apply** button.

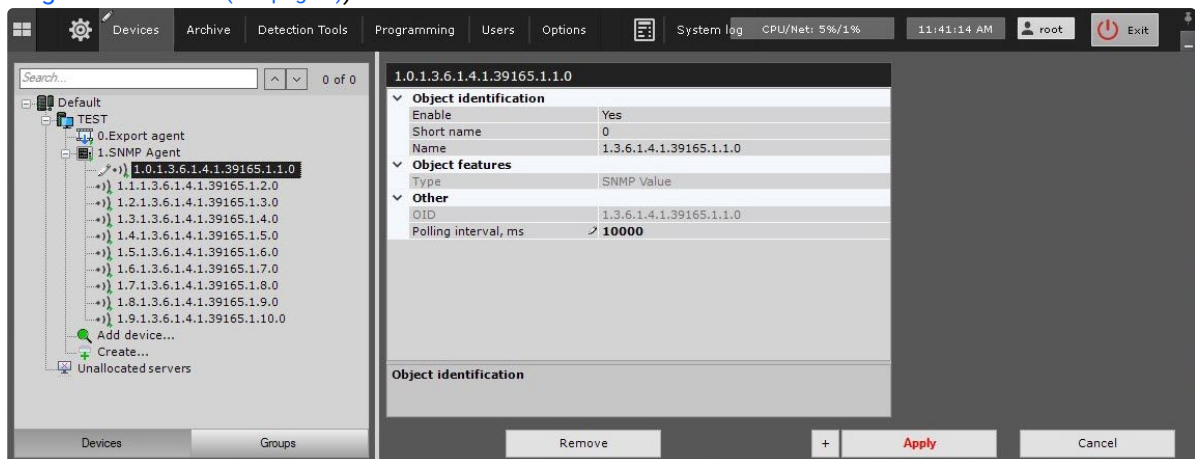
Configuration of the **SNMP Agent** integration module is complete. As a result, the hardware tree will be built:



4.1 Configuring the SNMP Value of the SNMP Agent integration module

To configure the SNMP Value of the **SNMP Agent** integration module, do the following:

1. Go to the settings panel of the **SNMP Value** object that is created automatically after you download the configuration on the basis of the **SNMP Agent** object (see [Configuring the SNMP Agent integration module](#) (see page 7)).



2. In the **Polling interval, ms** field, specify in milliseconds at what intervals the information from the device is requested.

3. Click the **Apply** button to save the changes.

Configuration of the SNMP Value of the **SNMP Agent** integration module is complete.

5 Working with the SNMP Agent integration module

5.1 General information about working with the SNMP Agent integration module

The **Map**, **Equipment Board** and **Macro** interface objects are used to work with the **SNMP Agent** integration module.

For the information on configuring these interface objects, see [Configuring the interactive map](#)³, [Configuring an Equipment Board](#)⁴ and [Programming](#)⁵.

For the information on working with these interface objects, see [Working with the interactive map](#)⁶, [Working with Equipment Board](#)⁷ and [Macros control](#)⁸.

5.2 Configuring macros when working with the SNMP Agent integration module



[Programming](#)⁹

[Macros control](#)¹⁰

When working with the **SNMP Agent** integration module, you can configure a macro that will trigger when an event is received from **SNMP Agent**.

When configuring a macro, you must select a specific object of the **SNMP Agent** integration module.

³ <https://docs.axxonsoft.com/confluence/display/one20en/Configuring+the+interactive+map>

⁴ <https://docs.axxonsoft.com/confluence/display/one20en/Configuring+an+Equipment+Board>

⁵ <https://docs.axxonsoft.com/confluence/display/one20en/Programming>

⁶ <https://docs.axxonsoft.com/confluence/display/one20en/Working+with+the+interactive+map>

⁷ <https://docs.axxonsoft.com/confluence/display/one20en/Working+with+Equipment+Board>

⁸ <https://docs.axxonsoft.com/confluence/display/one20en/Macros+control>

⁹ <https://docs.axxonsoft.com/confluence/display/one20en/Programming>

¹⁰ <https://docs.axxonsoft.com/confluence/display/one20en/Macros+control>

Example of a configured macro:

Name: Working mode:

Add to menu

Start conditions

Default: 1.SNMP Agent: 1.0.1.3.6.1.4.1.39165.1.1.0

Start conditions:

Event:

Add event filter

ACFA: Execute action

Default: 1.SNMP Agent: 1.0.1.3.6.1.4.1.39165.1.1.0



Component:

Action:

5.3 Managing the object of the SNMP Agent integration module

You cannot manage the object of the **SNMP Agent** integration module in the **Map** and **Equipment Board** interface objects.

The following states of the object of the **SNMP Agent** integration module are possible:


	Connected
	Disconnected

5.4 Managing the SNMP Value of the SNMP Agent integration module

You can manage the SNMP Value of the **SNMP Agent** integration module in the **Map** and **Equipment Board** interface object using the function menu of the **SNMP Value** object. To open the menu of the **SNMP Value** object, right-click the corresponding object. Commands to manage the SNMP Value of the **SNMP Agent** integration module are described in the table:

Menu command	Function
Set value	Set the value of the device connected via SNMP protocol
Get value	Get the value of the device connected via SNMP protocol

The following state of the **SNMP Value** object of the **SNMP Agent** integration module is possible:

	Added
---	-------