



**Guide for configuring and working with the Sigur 2.0  
integration module**

# Table of Contents

1	Introduction into the Guide for configuring and working with the Sigur 2.0 integration module.....	4
1.1	Purpose of the document.....	4
1.2	General information about the Sigur 2.0 integration module.....	4
2	Supported hardware and licensing of the Sigur 2.0 integration module.....	6
3	Adding the Sigur 2.0 integration module.....	7
4	Configuring the object of the Sigur 2.0 integration module .....	8
5	Working with the Sigur 2.0 integration module.....	10
5.1	General information about working with the Sigur 2.0 integration module .....	10
5.2	Configuring macros when working with the Sigur 2.0 integration module .....	10
5.3	Managing the object of the Sigur 2.0 integration module.....	11
5.4	Managing the access point of the Sigur 2.0 integration module.....	12

# 1 Introduction into the Guide for configuring and working with the Sigur 2.0 integration module

## On the page:

- [Purpose of the document \(see page 4\)](#)
- [General information about the Sigur 2.0 integration module \(see page 4\)](#)

## 1.1 Purpose of the document

The *Guide for configuring and working with the Sigur 2.0 integration module* is a reference and information manual and is intended for configuration specialists and operators of the **Sigur 2.0** integration module.

The Guide has the following information:

1. General information about the **Sigur 2.0** integration module.
2. Adding the **Sigur 2.0** integration module.
3. Configuring the **Sigur 2.0** integration module.
4. Working with the **Sigur 2.0** integration module.

## 1.2 General information about the Sigur 2.0 integration module

The **Sigur 2.0** integration module is a part of the ACS subsystem implemented on the basis of *ACFA One + ACFA* and designed to monitor objects. You cannot control and configure the **Sigur 2.0** integration module in *ACFA One + ACFA*.



### Note

The detailed information about the ACS **Sigur 2.0** is given in the official reference documentation (manufacturer—Sigur, PA Labs d.o.o.).

Before you start configuring the **Sigur 2.0** integration module, do the following:

1. Install the ACS **Sigur 2.0** hardware on the protected facility.
2. Configure the ACS **Sigur 2.0** controllers using the SIGUR Access Management software (see the official reference documentation).

## 2 Supported hardware and licensing of the Sigur 2.0 integration module

<b>Name of the integration module</b>	<a href="#">Sigur 2.0</a> (see page 4)
<b>Integrated software, hardware</b>	Sigur software version <b>1.6.6.42</b> Controllers: <ul style="list-style-type: none"> <li>• <b>Sigur E510</b></li> <li>• <b>Sigur E2/E4</b></li> </ul>
<b>Functionality</b>	<b>Monitoring</b>
<b>Licensing</b>	Per each controller ( <b>ACFAReader</b> )
<b>Information on manufacturer</b>	PA Labs d.o.o. Address: Zemljemerska, 12, 1000 Ljubljana, Slovenia Phone: +8 (800) 700-31-83, +7 (831) 260-12-93 Website: <a href="http://www.sigur.com">www.sigur.com</a> <sup>1</sup> Email: <a href="mailto:support@sigur.com">support@sigur.com</a> <sup>2</sup> , <a href="mailto:sales@sigur.com">sales@sigur.com</a> <sup>3</sup>
<b>Type of integration</b>	<b>SOFT-SOFT</b>
<b>Hardware connection interface</b>	NA
<b>ACFA version</b>	<a href="#">10.0</a> <sup>4</sup>

---

<sup>1</sup> <https://sigur.com/en/>

<sup>2</sup> <mailto:support@sigur.com>

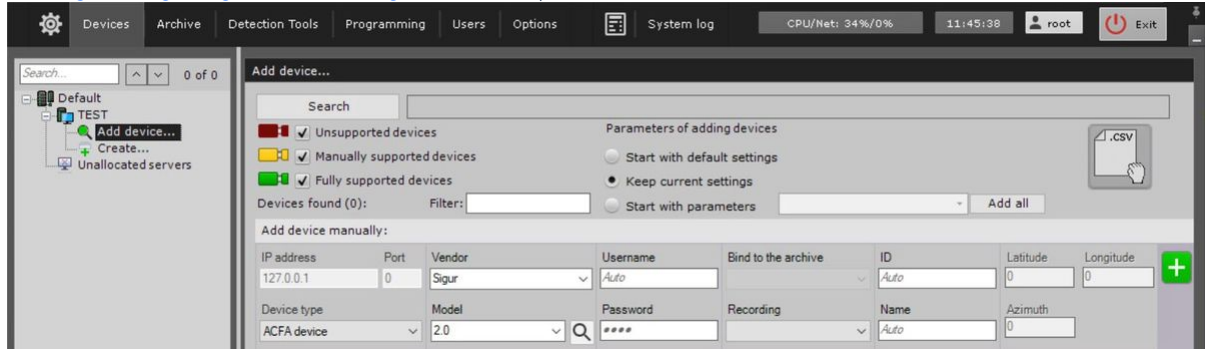
<sup>3</sup> <mailto:sales@sigur.com>


<sup>4</sup> <https://docs.axxonsoft.com/confluence/spaces/AxACFA10EN/pages/371687478/ACFA+10.0+Release+Notes>

### 3 Adding the Sigur 2.0 integration module

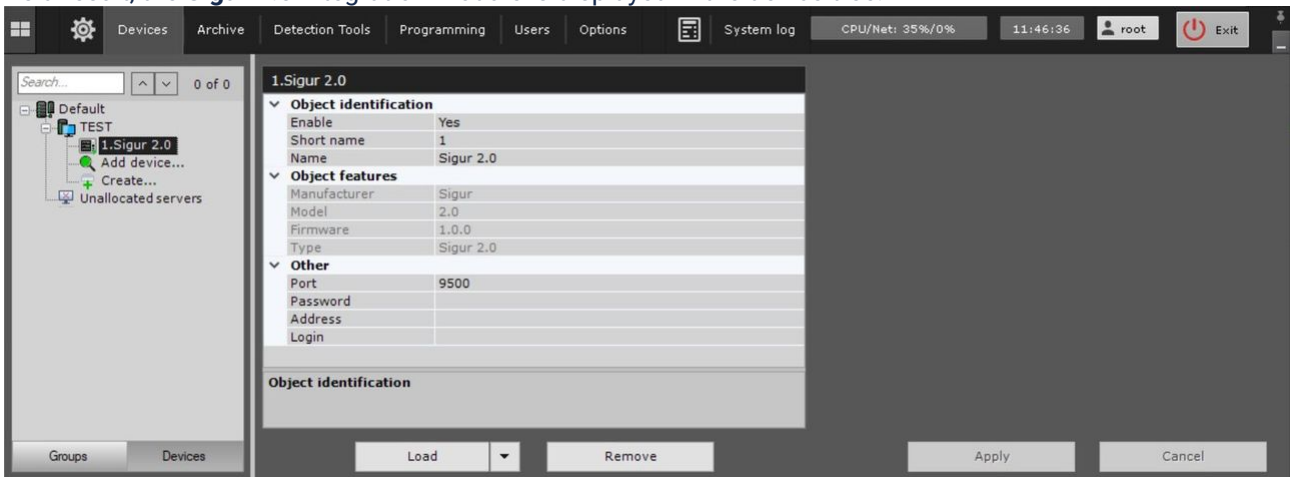
To add the **Sigur 2.0** integration module to the system, do the following:

1. You can add the device to the system manually using the IP Device Discovery Wizard (see [Searching, adding, configuring and removing IP devices](#)<sup>5</sup>).



2. From the **Device type** drop-down list, select **ACFA device**.
3. From the **Vendor** drop-down list, select **Sigur**.
4. From the **Model** drop-down list, select **2.0**.
5. Click the  button.

As a result, the **Sigur 2.0** integration module is displayed in the device tree.



<sup>5</sup> <https://docs.axxonsoft.com/confluence/spaces/one20en/pages/246484249/Searching+adding+configuring+and+removing+IP+devices>

## 4 Configuring the object of the Sigur 2.0 integration module

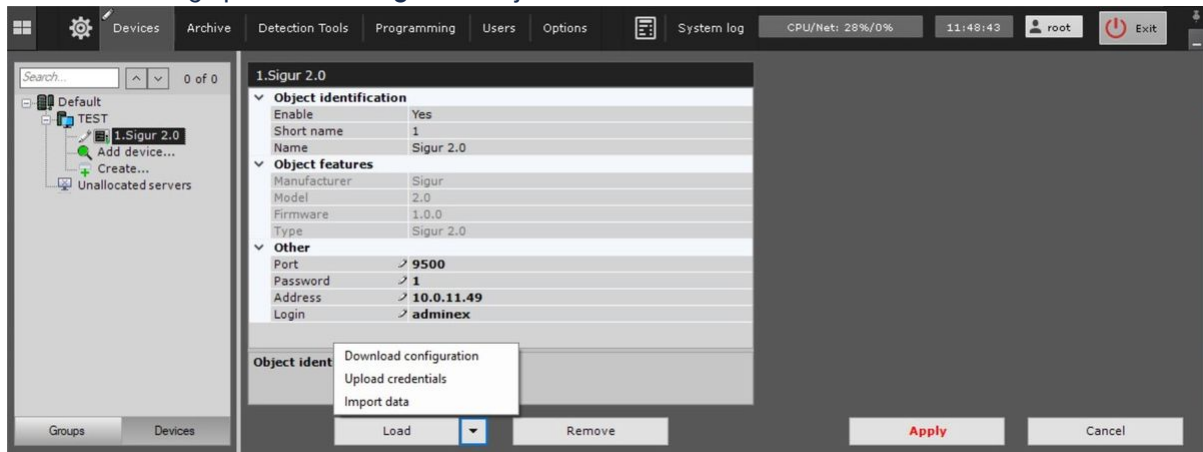
To configure the object of the **Sigur 2.0** integration module, do the following:




### Note

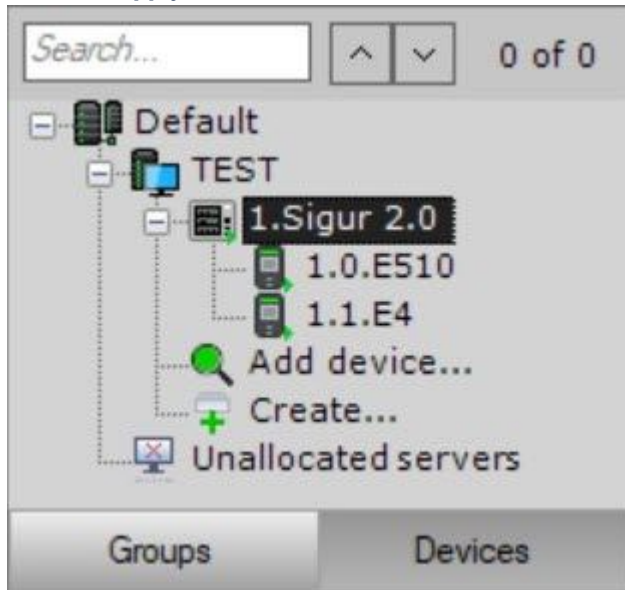
The user whose credentials are used to connect to the **Sigur 2.0** integration module must set the **Use REST API** checkbox in the SIGUR Access Management software.



1. Go to the settings panel of the **Sigur 2.0** object.



2. In the **Port** field, specify the number of the port to connect to the SIGUR Access Management software.
3. In the **Password** field, specify the user password of the SIGUR Access Management software.
4. In the **Address** field, specify the IP address of the SIGUR Access Management software.
5. In the **Login** field, specify the username of the SIGUR Access Management software.
6. Click the **Apply** button to save the changes.
7. Click the  button and select **Download configuration** from the drop-down list to download the configuration automatically and build the device tree.

- Click the **Apply** button. As a result, a device tree is built:



- To upload user data from the SIGUR Access Management software, click the  button and select **Import data** from the drop-down list.
- Click the **Apply** button.
- To upload user identifiers from the SIGUR Access Management software, click the  button and select **Upload credentials** from the drop-down list.
- Click the **Apply** button.

Configuring the object of the **Sigur 2.0** integration module is complete.

## 5 Working with the Sigur 2.0 integration module

### 5.1 General information about working with the Sigur 2.0 integration module

To work with the **Sigur 2.0** integration module, use the **Map**, **Equipment Board**, and **Macro** interface objects.

For the information on configuring these interface objects, see [Configuring the interactive map](#)<sup>6</sup>, [Configuring an Equipment Board](#)<sup>7</sup>, and [Programming](#)<sup>8</sup>.

For the information on working with these interface objects, see [Working with the interactive map](#)<sup>9</sup>, [Working with Equipment Board](#)<sup>10</sup>, and [Macros control](#)<sup>11</sup>.

### 5.2 Coniguring macros when working with the Sigur 2.0 integration module



[Programming](#)<sup>12</sup>

[Macros control](#)<sup>13</sup>

When you work with the **Sigur 2.0** integration module, you can configure a macro that triggers when an event is received from **Sigur 2.0**.

When you configure a macro, you must select a specific object of the **Sigur 2.0** integration module.

<sup>6</sup> <https://docs.axxonsoft.com/confluence/spaces/one20en/pages/246485351/Configuring+the+interactive+map>

<sup>7</sup> <https://docs.axxonsoft.com/confluence/spaces/one20en/pages/260925539/Configuring+an+Equipment+Board>

<sup>8</sup> <https://docs.axxonsoft.com/confluence/spaces/one20en/pages/246485013/Programming>

<sup>9</sup> <https://docs.axxonsoft.com/confluence/spaces/one20en/pages/246486362/Working+with+the+interactive+map>

<sup>10</sup> <https://docs.axxonsoft.com/confluence/spaces/one20en/pages/260925544/Working+with+Equipment+Board>

<sup>11</sup> <https://docs.axxonsoft.com/confluence/spaces/one20en/pages/246486481/Macros+control>

<sup>12</sup> <https://docs.axxonsoft.com/confluence/spaces/one20en/pages/246485013/Programming>

<sup>13</sup> <https://docs.axxonsoft.com/confluence/spaces/one20en/pages/246486481/Macros+control>



Example of a configured macro:

The screenshot shows a configuration window for a macro named 'Macrocommand'. The 'Working mode' is set to 'Always'. There is an unchecked 'Add to menu' checkbox. The 'Start conditions' section is expanded, showing a default of '1. Sigur 2.0'. The start conditions are set to 'Default: 1. Sigur 2.0' and the event is 'Connection is establish'. There is an 'Add event filter' button. The 'Notification: Send push notification' section is also expanded, showing a title 'Sigur 2.0 no connection', an empty subtitle field, a large empty text area, and a 'To:' field set to 'Default: admin'. There are expand/collapse and close buttons on the right side of the sections.

### 5.3 Managing the object of the Sigur 2.0 integration module

You cannot manage the object of the **Sigur 2.0** integration module in the **Map** and **Equipment Board** interface objects.

The object of the **Sigur 2.0** integration module can have the following states:






	Connected
	Disconnected

	Unknown
---	---------

## 5.4 Managing the access point of the Sigur 2.0 integration module

You cannot manage the access point of the **Sigur 2.0** integration module in the **Map** and **Equipment Board** interface objects.

The access point of the **Sigur 2.0** integration module can have the following states:

	Fire unlocking
	Door hold
	Tamper
	Disconnected
	Connected