

AxxonSoft

# ACFA Intellect

Integration Module Settings Guide

# AnsonDB

Version 1.0

Moscow 2014



# Table of contents

<b>TABLE OF CONTENTS .....</b>	<b>2</b>
<b>1 INTRODUCTION.....</b>	<b>3</b>
1.1 Purpose of the document.....	3
1.2 General information about the AnsonDB integration module .....	3
<b>2 CONFIGURATION OF THE ANSONDB INTEGRATION MODULE.....</b>	<b>4</b>
2.1 Configuration procedure for the AnsonDB integration module .....	4
2.2 Configure the connection of the AnsonDB ACS to the Oracle DB Server .....	4
2.3 Create objects of the Aritech devices .....	5

# 1 Introduction

## 1.1 Purpose of the document

The *AnsonDB integration module settings guide* is a reference manual designed for *AnsonDB* Module configuration technicians and operators. This module functions as part of access control system which has been built on the *ACFA Intellect* Software System.

This Guide presents the following materials:

1. general information about the *AnsonDB* module;
2. *AnsonDB* module settings;

## 1.2 General information about the *AnsonDB* integration module

The *AnsonDB* integration module is part of the *ACS* system built on the basis of the *ACFA Intellect* Software System. It is designed to monitor devices of the *AnsonDB ACS*. Configuring devices of the *AnsonDB ACS* in the *ACFA Intellect* software package is impossible.

Before start the working of the *AnsonDB* integration module install hardware on the secured object and configure the system in the Oracle DB Server.

## 2 Configuration of the AnsonDB integration module

### 2.1 Configuration procedure for the AnsonDB integration module

The *AnsonDB* integration module is configured as follows:

1. Configure the connection of the *AnsonDB* ACS to the *Oracle DB Server*.
2. Create objects of *AnsonDB* devices.

### 2.2 Configure the connection of the AnsonDB ACS to the Oracle DB Server

To configure the connection of the *AnsonDB* ACS to the *Oracle DB Server*, do the following:

1. Create the **AnsonDB** object on the basis of the **Computer** object on the **Hardware** tap of the **System settings** dialog window (Fig. 2.2—1).

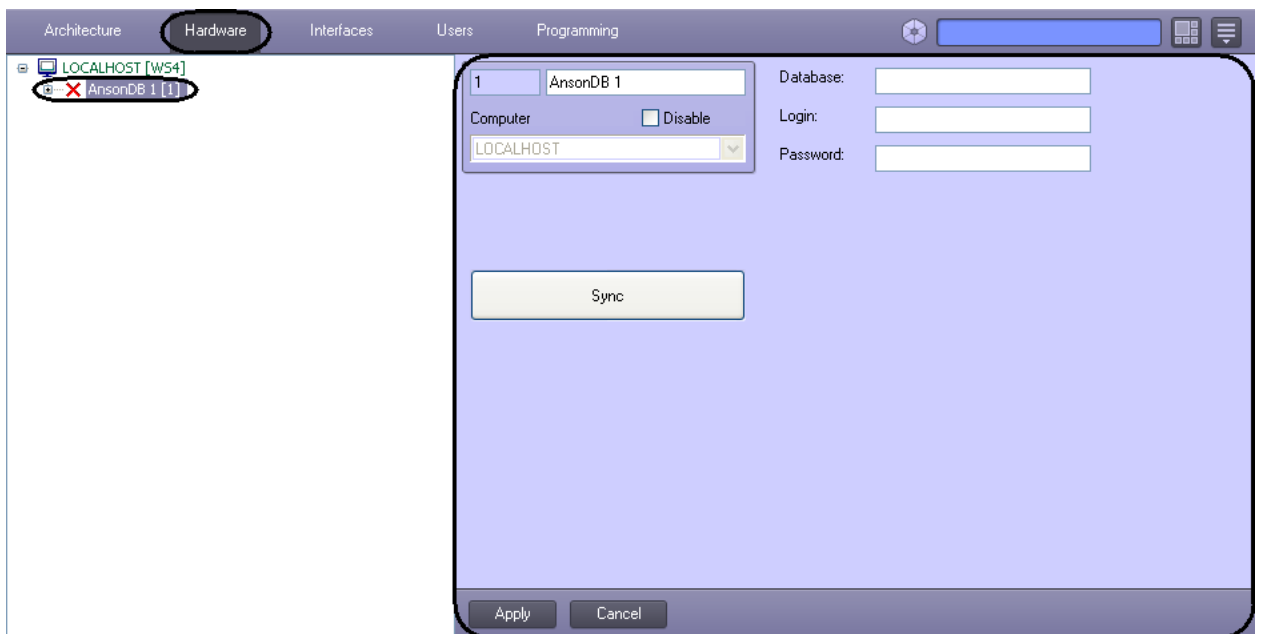


Fig. 2.2—1 AnsonDB object

2. Set the connection parameters on settings panel of the **AnsonDB** object:

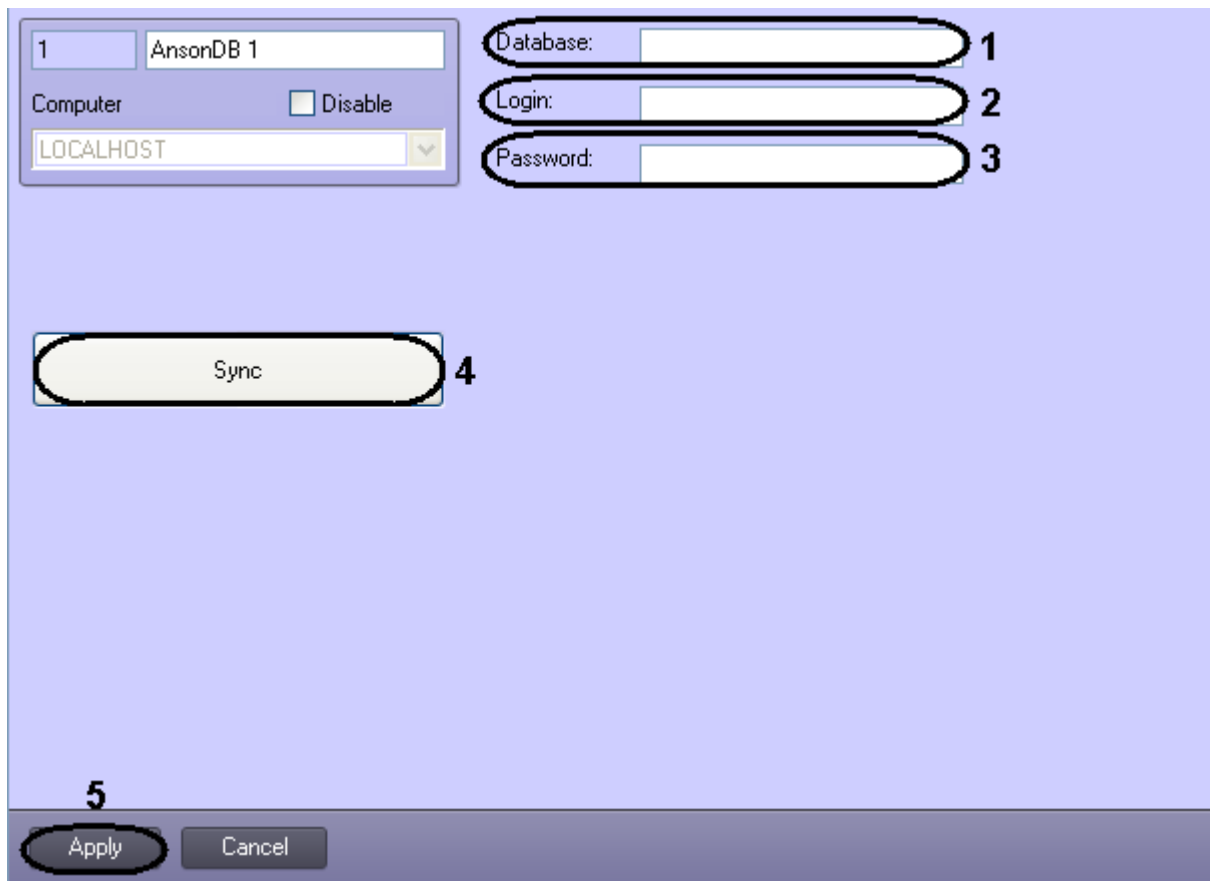


Fig. 2.2—2 Configure connection

- 2.1 In the **Database:** field enter the connection string to the *Oracle DB Server* (Fig. 2.2—2, 1).
- 2.2 In the **Login:** field enter the login of connection to the *Oracle DB Server* (Fig. 2.2—2, 2).
- 2.3 In the **Password:** field enter the password of connection to the *Oracle DB Server* (Fig. 2.2—2, 3).
3. Click the **Sync** button to synchronize the *Intellect* software with the *Oracle DB Server* (Fig. 2.2—2, 4).
4. Click the **Apply** button (Fig. 2.2—2, 5).

Configuring the connection of the *Aritech FSA* to the *Oracle DB Server* is completed.

### 2.3 Create objects of the Aritech devices

The following elements of the *AnsonDB ACS* system are available in the *ACFA Intellect* software package: controllers (**AnsonDB controller** object), doors (**AnsonDB Door** object).

**AnsonDB controller** object is created on the basis of the **AnsonDB** object.

**AnsonDB Door** object is created on the basis of the **AnsonDB controller** object.



Fig. 2.3—1 Objects tree