

AxxonSoft

ACFA Intellect

Integration Module Settings Guide

Aritech

Version 1.0

Moscow 2014



Table of contents

TABLE OF CONTENTS	2
1 INTRODUCTION.....	3
1.1 Purpose of the document.....	3
1.2 General information about the Aritech integration module	3
2 CONFIGURATION OF THE ARITECH INTEGRATION MODULE.....	4
2.1 Configuration procedure for the Aritech integration module	4
2.2 Configure the connection of the Aritech FSA to the ACFA Intellect software package	4
2.3 Create objects of the Aritech devices	5
3 WORKING WITH THE ARITECH INTEGRATION MODULE	6
3.1 General information about working with the Aritech integration module	6
3.2 Controlling the Aritech controller.....	6

1 Introduction

1.1 Purpose of the document

The *Aritech integration module settings guide* is a reference manual designed for *Aritech* Module configuration technicians and operators. This module functions as part of fire and security alarm system which has been built on the *ACFA Intellect* Software System.

This Guide presents the following materials:

1. general information about the *Aritech* module;
2. *Aritech* module settings;
3. working with the *Aritech* module.

1.2 General information about the *Aritech* integration module

The *Aritech* integration module is part of the *FSA* system built on the basis of the *ACFA Intellect* Software System. It is designed to control and manage devices of the *Aritech* FSA. Configuring devices of the *Aritech* FSA in the *ACFA Intellect* software package is impossible.

Before start the working of the *Aritech* integration module install hardware on the secured object and configure the system in the vendor software.

Note. Detailed information about the Aritech can be found in the official documentation (manufacturer "UTC Fire & Security").

2 Configuration of the Aritech integration module

2.1 Configuration procedure for the Aritech integration module

The *Aritech* integration module is configured as follows:

1. Configure the connection of the *Aritech* FSA to the *ACFA Intellect* software package.
2. Create objects of *Aritech* devices.

2.2 Configure the connection of the Aritech FSA to the ACFA Intellect software package

To configure the connection of the *Aritech* FSA to the *ACFA Intellect* software package, do the following:

1. Create the **Aritech** object on the basis of the **Computer** object on the **Hardware** tap of the **System settings** dialog window (Fig. 2.2—1).

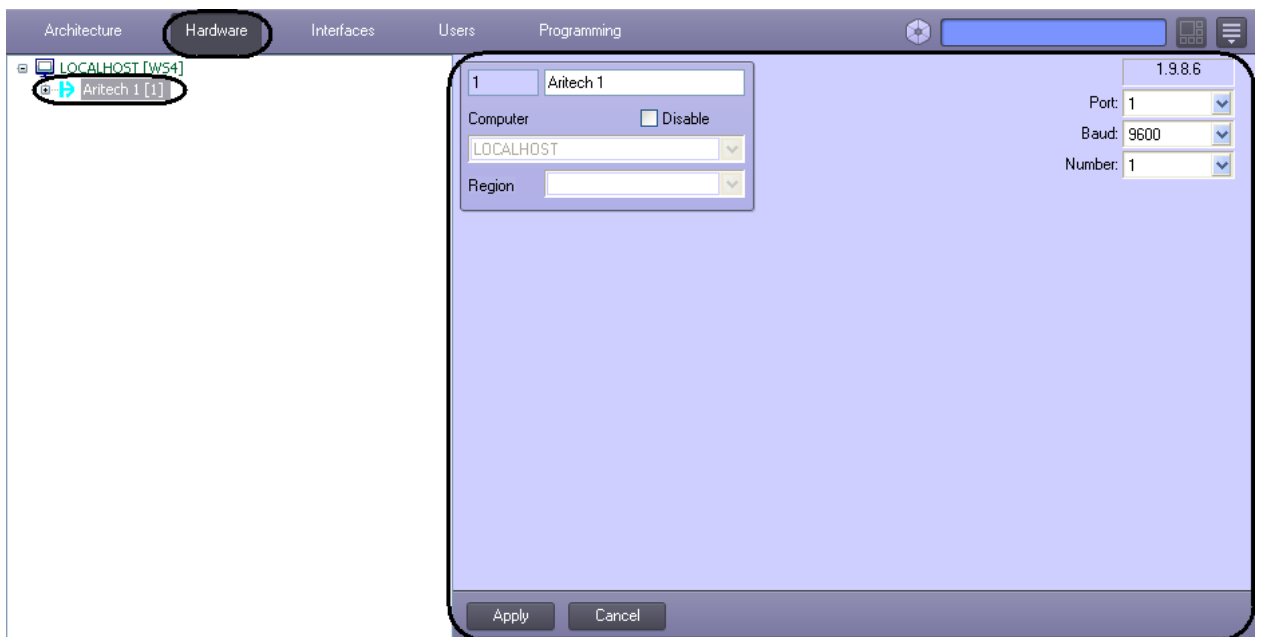


Fig. 2.2—1 Aritech object

2. Set the connection parameters on settings panel of the **Aritech** object:

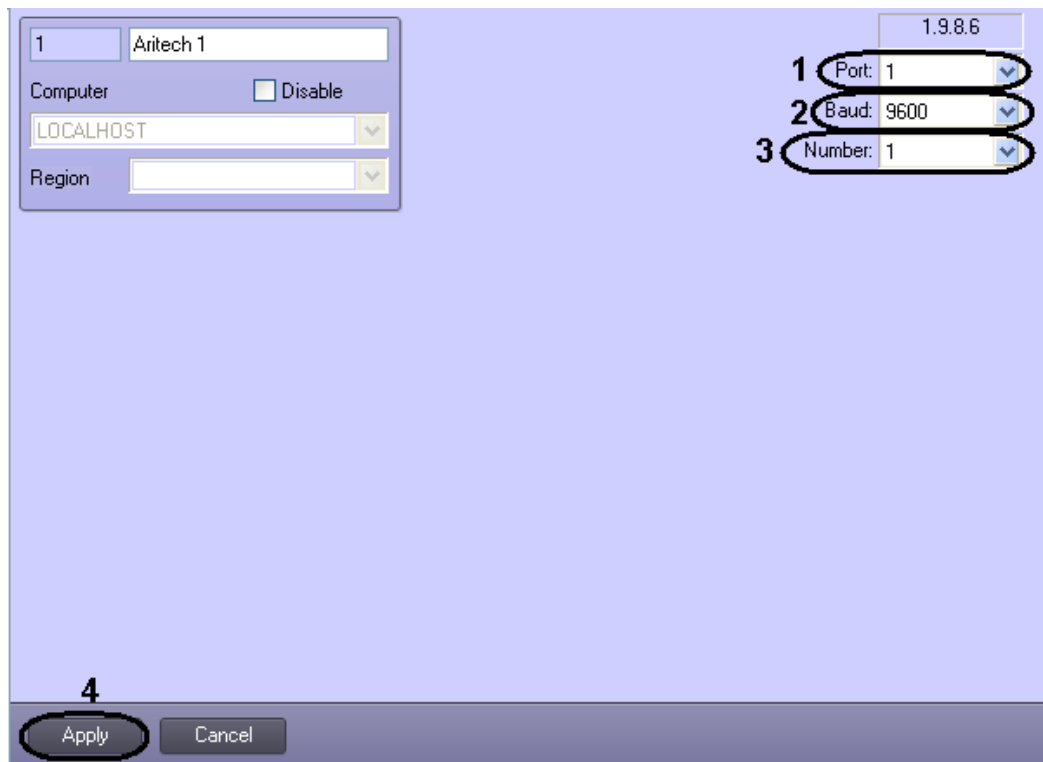


Fig. 2.2—2 Configure connection

- 2.1 From the **Port:** drop-down list select the port of connection the *Aritech* controller to the *ACFA Intellect* software package (Fig. 2.2—2, 1).
- 2.2 From the **Baud:** drop-down list select the speed of controller's connection (Fig. 2.2—2, 2).
- 2.3 From the **Number:** drop-down list select the number of the connected *Aritech* controller (Fig. 2.2—2, 3).
3. Click the **Apply** button (Fig. 2.2—2, 4).

Configuring the connection of the *Aritech* FSA to the *ACFA Intellect* software package is completed.

2.3 Create objects of the Aritech devices

The following elements of the *Aritech* FSA system are available in the *ACFA Intellect* software package: input relay (**Aritech Input** object), hardware loops (**Aritech Loop** object), armed zones (**Aritech Zone** object) and sensors (**Aritech Sensor** object).

Aritech Area, **Aritech Input**, **Aritech Loop** and **Aritech Output** objects are created on the basis of the **Aritech** object.

Aritech Zone object is created on the basis of the **Aritech Area** object.

Aritech Sensor object is created on the basis of the **Aritech Loop** object.

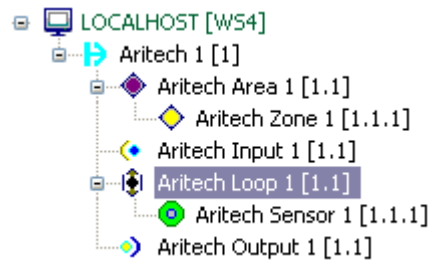


Fig. 2.3—1 Objects tree

3 Working with the Aritech integration module

3.1 General information about working with the Aritech integration module

The following interface objects are used for working with *Aritech* integration module:

1. **Map;**
2. **Events protocol.**

Information about **Map** and **Events protocol** interface objects' configuration is given in the *Intellect software package: Administrator guide*.

Working with these interface objects is given in details in *Intellect software package: Operator guide*.

3.2 Controlling the Aritech controller

Controlling *the Aritech* controller is carried out in **Map** interactive window using feature menu of **Aritech** object (Fig. 3.2—1, Table 3.2—1).

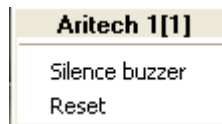


Fig. 3.2—1 Control Aritech controller

Table 3.2—1 Control the Aritech controller

Menu command	Performed function
Silence buzzer	Turn off the sound notification about alarm
Reset	Restart the controller