



AxxonSoft

The Axxon Smart Software Package

Version 1.1

Quick Start Guide



Moscow 2011



Contents

CONTENTS	1
1 INTRODUCTION	3
1.1 Document purpose.....	3
1.2 Purpose of the Axxon Smart software package	3
2 INSTALLING THE AXXON SMART SOFTWARE PACKAGE	4
3 LICENSING THE SOFTWARE PRODUCT	5
4 STARTING AND CLOSING THE AXXON SMART SOFTWARE	7
5 CONFIGURING THE AXXON SMART SOFTWARE PACKAGE	8
5.1 Procedure for Configuring System Objects	8
5.2 Devices	9
5.3 Detectors	9
5.4 Archives	10
5.5 Roles and Users	10
6 OPERATING THE AXXON SMART SOFTWARE PACKAGE	11
6.1 Viewing tile	11
6.2 Layouts.....	12
6.3 The Archive Navigation Panel.....	12
6.4 The PTZ Control Panel	13
7 CONCLUSION	14

1 Introduction

1.1 Document purpose

This document, titled *The Axxon Smart Software Package. Quick Start Guide*, is intended to be used as a concise guide for installing and starting the *Axxon Smart* software package as well as for configuring and using its main functions (video surveillance, audio surveillance, pan/tilt/zoom devices management). More detailed information on the *Axxon Smart* software package is presented in the documents titled *The Axxon Smart Software Package. User Guide* and *The Axxon Smart Software Package. Recommended Platforms*.

1.2 Purpose of the Axxon Smart software package

The *Axxon Smart* software package is an entry-level product in the Axxon product line developed by AxxonSoft. Security systems based on *Axxon Smart* range from home security systems (for an apartment or house) to professional security systems for small and midsize businesses (hotels, automotive service centers, shops, parking structures, etc.).

Video and audio surveillance of guarded locations, video analysis and rapid response to suspicious situations without operator involvement, and storage and export of obtained data are just a few of *Axxon Smart*'s many functions.

The *Axxon Smart* software package enables the user to accomplish a wide spectrum of tasks, as it works both with digital equipment and with analog video cameras (through Stretch cards), and also makes it possible to create a hybrid security system containing both kinds of equipment (Fig. 1—1).

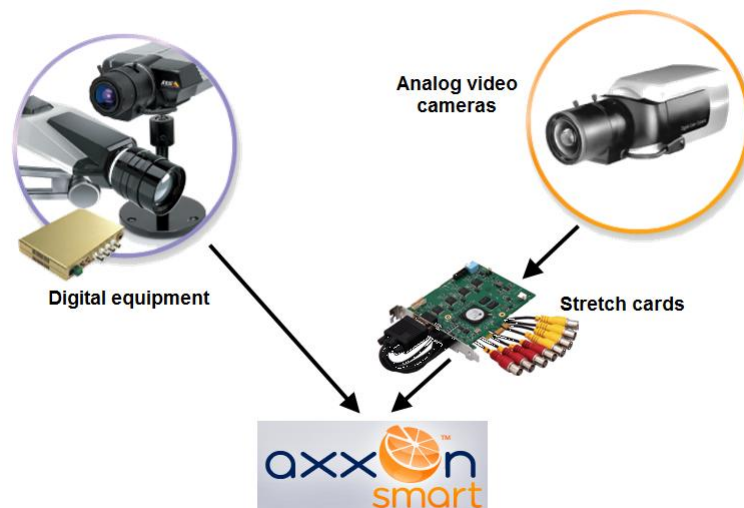


Fig. 1—1 A hybrid security system based on the *Axxon Smart* software package

The *Axxon Smart* software package supports touch-sensitive monitors.

2 Installing the Axxon Smart Software Package

First of all, you have to install the hardware and software components of the *Axxon Smart* software package.

NOTE. Refer to the document titled The Axxon Smart Software Package. Recommended Platforms for obtaining detailed information on recommended Axxon Smart hardware and software platforms.

When working with *Axxon Smart*, the user must keep in mind the limitations that the developer imposed on the system in order to ensure its operability. The most important limitations are as follows:

1. Use only Latin characters, Arabic numerals and the minus sign (-) to name your computer with *Axxon Smart* will be installed.
2. Never change the computer name after you have installed the system.
3. Synchronize the time among all the networked computers with *Axxon Smart* installed.
4. Enable remote access to the computer with *Axxon Smart* installed using NetBiosName.
5. TCP ports, dynamically specified by OS, are used while connecting the server-client.

To proceed with installation you must have Windows OS administrator rights.

The following two types of installations are available when installing *Axxon Smart* to a personal computer:

1. **Server and Client** — This type of installation is used to accomplish the following tasks:
 - 1.1. Physical connection to a personal computer and software configuration of video and audio capture devices (video cameras, microphones), event generation devices (sensors, relays, etc.), and hard disks for organizing data archives.
 - 1.2. All tasks accomplished with the **Client** type of installation (see below).
2. **Client** — This type of installation is used for installing the software's user interfaces, which enable any user to connect to any server within a single security system and to perform administration/management/monitoring of a guarded location based on the permissions granted by the administrator.

To install the *Axxon Smart* software package, perform the following steps:

1. Power up the PC and load the operating system.
2. Insert the *Axxon Smart* installation CD into the CD-ROM drive.
3. Start the *Axxon Smart* software installation.
4. Install the required configuration of *Axxon Smart* (**Server and Client/ Client**) by following setup prompts.

Installation of *Axxon Smart* is now finished.

3 Licensing the Software product

After installing the *Axxon Smart* hardware and software components the *Axxon Smart* software package must be activated in order to utilize the full functionality of the security system.

Data on the types of *Axxon Smart* licenses is presented below (Table 3—1).

Table 3—1 *Axxon Smart* software package license types

Type of license	Number of servers in the system	Number of video channels per server	Archives volume	Cost
<i>Smart Start</i>	1	16	1 terabyte	Free
<i>Axxon Smart</i>	up to 4	up to 64	unlimited (determined by the disk subsystem size)	Contact an AxxonSoft representative for the price

License activation for the *Axxon Smart* software package is carried out through the product activation utility. Launch it using **Start** menu: **Start** -> **All programs** -> **Axxon Smart** -> **Utilities** -> **Product activation**.

Next you should select the name of one of the servers in the domain in which the activation key is to be distributed (the key will be distributed on all servers of this domain which are running at the moment of activation) and connect to the system using the name and password of the *Axxon Smart* software package administrator to continue the activation process (Fig. 3—1).



Fig. 3—1 Connecting to the server

The activation method selection dialog box will then appear (Fig. 3—2). Here and further in the product activation process, it is recommended that you use the prompts displayed in the utility's dialog boxes (Fig. 3—2).

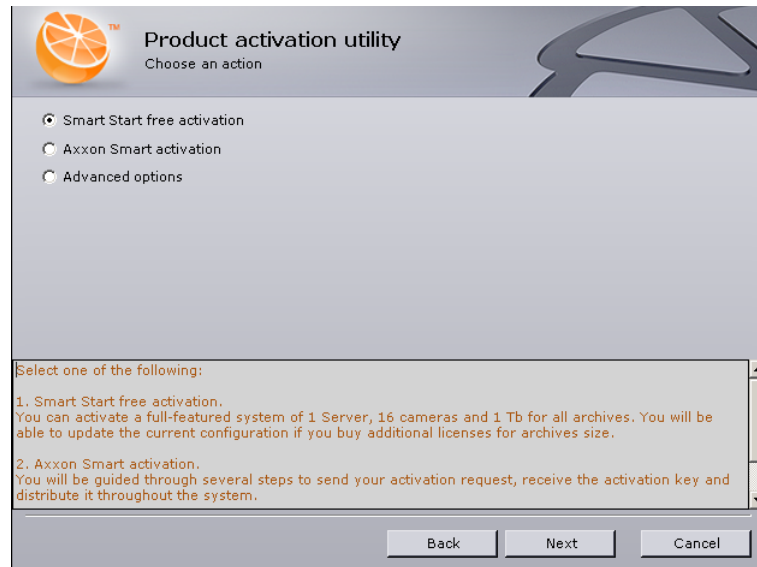


Fig. 3—2 Activation method selection dialog box

In the activation method selection dialog box, select the one of the following options (see Fig. 3—2):

1. **Smart Start free activation** if you need to activate a Smart Start license.

There are two methods to activate it:

- 1.1. By automatically sending a request and downloading an activation key. You must be connected to the Internet.
- 1.2. By sending a request and downloading an activation key to the system manually. This method is used when a computer with *Axxon Smart* installed is not connected to the Internet.

It is recommended that you read the [Smart Start activation manual](#) providing step by step activation instructions. A section titled *Licensing the Software Product* of the *Axxon Smart User Guide* also contains the detailed information on activating the *Smart Start* license.

2. **Axxon Smart activation** if you need to activate an *Axxon Smart* license.

There are two methods to activate it:

- 2.1. By entering the product code in a special field of the product activation utility (for users who have already purchased a system).
- 2.2. By generating an activation request which will then be processed by an AxxonSoft representative (for users who plan to purchase a system). After payment, the user will receive either a product code (after which he or she should use the previous method), or an activation key which the AxxonSoft representative has already received on the basis of the product code.

Read the section titled *Licensing the Software Product* of the *Axxon Smart User Guide* for obtaining detailed information on activating the *Axxon Smart* license.

After activating the required license, a confirmation message will appear.

Now you are ready to start working with the *Axxon Smart* software.

4 Starting and closing the Axxon Smart software

Check readiness for operation of the entire communication environment, cameras, microphones and other system components before starting the system.

To start working with the software, you must perform the following steps:

1. Go to **Start** ⇒ **All Programs** ⇒ **Axxon Smart** ⇒ **Axxon Smart**.

Axxon Smart's Client will then launch and an authorization window will appear (Fig. 4—1).

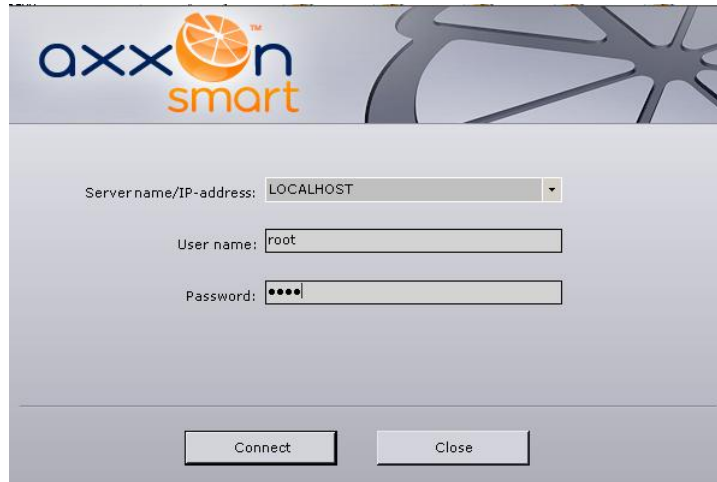


Fig. 4—1 Entering your user name and password at Smart Startup




2. Enter your user name and password and click **Connect** (see Fig. 4—1).

*NOTE 1. If a remote user is accessing the software, the name of the computer with which the connection is being established should be indicated in the **Computer** field.*

*NOTE 2. When logging into the system for the first time, use the user name "root", which has administrator permissions. Enter "root" into the **User name** and **Password** fields. The administrator then needs to configure the system for multi-user access..*

If authorization is successful, a video surveillance monitor will be displayed on the screen.




Before closing Axxon Smart, you need to exit the user interfaces. To do this, you need to do one of the following:

1. Click the  button located in the top-right corner of the program window.
2. Click the  button located under **Settings**.
3. Select **Exit** in the context menu of the Axxon Smart icon , which is located on the Windows toolbar when the program window is minimized.

When you perform one of these actions, the authorization window will appear (see Fig. 4—1). To close Axxon Smart (completely exit the client), click **Close**.

5 Configuring the Axxon Smart software package

The *Axxon Smart* software package's interface consists of three expanding menus:

1. **Layouts** 
2. **Alerts** 
3. **Settings** 

Use the **Settings** menu to configure *Axxon Smart*.

5.1 Procedure for Configuring System Objects

System objects form the basis for configuring the *Axxon Smart* software package; you can set them up using the **Settings** menu (Fig. 5—1).

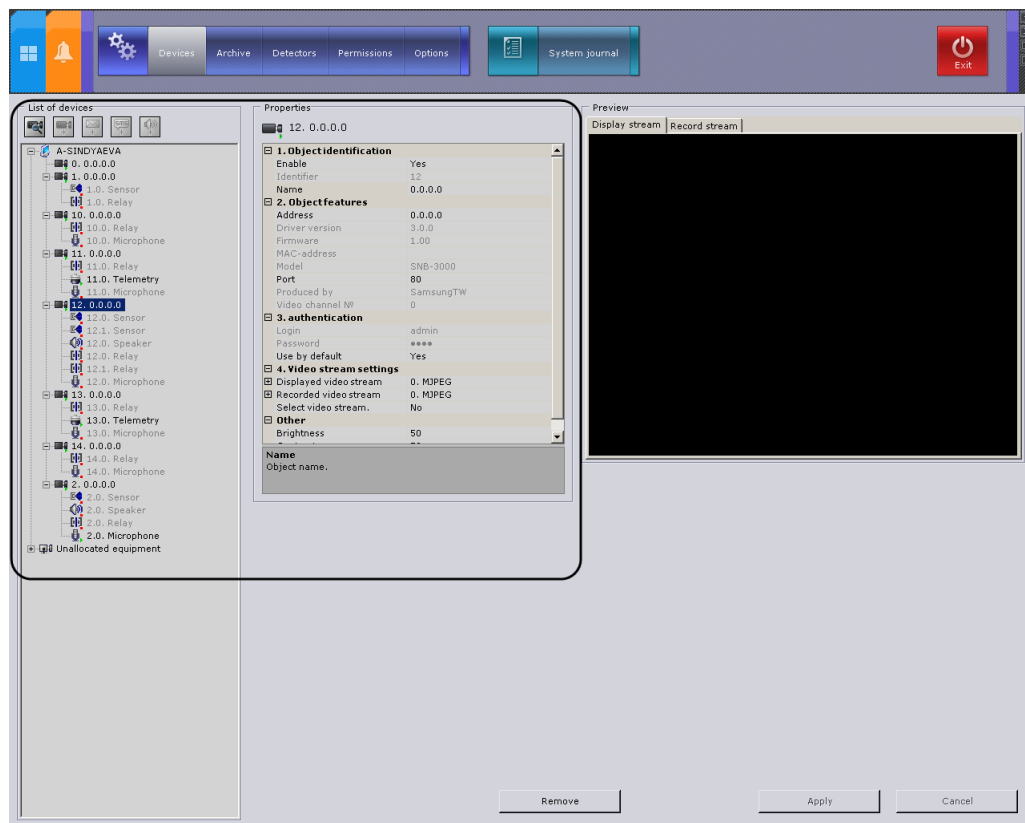


Fig. 5—1 The Devices tab under Settings

Identifying and managing devices physically connected to a server, creating users with varying permissions, and creating rules and automatic responses are just a few of the things the user can do by creating and configuring system objects.

The procedure for working with system objects varies slightly depending on their type, but generally you should adhere to the following sequence of actions:


1. Create an object.

2. Configure its parameters.
3. Save changes.
4. Edit the values of parameters.
5. Save changes.
6. Delete the object.

Some system object parameters have a set range of values, in which case you must select the appropriate value from a list. Other parameters serve to display information, while yet others must be set manually according to the recommendations in the parameter's description (as a rule, the parameter description is displayed in a special area under the object properties table when the parameter is selected).

As is evident from the sequence listed above, any changes made during configuration should be saved by clicking the **Apply** button. Before you click the **Apply** button, the changes may be cleared using the **Cancel** button. Otherwise the changes will be applied without having to restart the software.


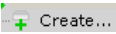
5.2 Devices

System objects corresponding to physically connected devices appear in the system as a result of the device search. To search for a device, use the  button on the **Device** tab.

Devices found are displayed with their IP addresses as an **Unallocated equipment** list.

The desired unallocated equipment must be linked to a server, after which it will be displayed in the list of devices on the server and will be accessible as **Camera** or **IP Server** for further configuration.

The object tree of **Camera** and **IP server** objects is generated automatically according to its functions which are integrated into the *Axxon Smart* software package (the presence of alarm inputs, relay outputs, a pan/tilt unit, etc.).

You can also create objects in *Axxon Smart* either using the  tools located above the object tree or using the  button, depending on the object type. You can then configure the objects and save changes.

5.3 Detectors

In the *Axxon Smart* software package, several types of detectors process incoming data:

1. Situation analysis detectors.
2. Basic detectors:
 - 2.1. Video detectors.
 - 2.2. Audio detectors.
3. Detectors embedded in a video camera:
 - 3.1. Video stream processing detectors.

3.2. Detectors which process signals from the video camera's sensor.

Detector setup takes place using the interface in the **Detectors** tab (under **Settings**). In order for certain actions to be executed when a detector is triggered, you must configure automatic rules in the **Rules** group.

5.4 Archives

You can configure archives using the interface in the **Archive** tab (under **Settings**).

An archive can be distributed on several volumes of the server. On one volume for one archive you can create only one partition, which occupies either a file of a set size or the entire volume.

You can configure archives as follows:

1. Create archives with the desired parameters.
2. Configure recording of the video stream from video cameras to the archive.

5.5 Roles and Users

In *Axxon Smart*, only one role (Administrator) and one user (root) are registered by default; their deletion is prohibited. Administrators possess permissions to configure all components of the video surveillance system. To register an operator with individual permissions, you must create a new role with those permissions and a new user account for that user.

Registration and configuration of roles and users is carried out through the **Permissions** tab in **Settings**.

6 Operating the Axxon Smart software package

This guide briefly discusses the operation of the following main elements of the User Interface:

1. Viewing Tile.
2. Layouts.
3. Archive Navigation Panel.
4. PTZ Control Panel.

You can access them using the **Layouts** menu.

NOTE. The viewing tile can be displayed on the Alerts menu to evaluate alert events occurred.

6.1 Viewing tile

The viewing tile (Fig. 6—1) is used to display video stream on the monitor of a computer with specific parameters for the purpose of video surveillance and viewing video archives. The viewing tile also has a function which allows the generation and evaluation of alert events in the process of video monitoring of a guarded location.



Fig. 6—1 The viewing Tile

The viewing tile context menu is used to access the following functions (depending on the enabled surveillance mode: real time, archive or alert):

NOTE. To select the video surveillance mode, use the tabs in the lower right-hand part of the viewing tile.

1. Video surveillance.
2. Audio monitoring.
3. Exporting frames and recordings.
4. Object tracking.

To bring up the viewing tile context menu, left-click the video camera icon in the upper left-hand corner of the tile.

6.2 Layouts

An *Axxon Smart* operator is granted access to work with the layouts ribbon (Fig. 6—2). The layouts ribbon can operate in a user-defined mode or a standard mode of operation.

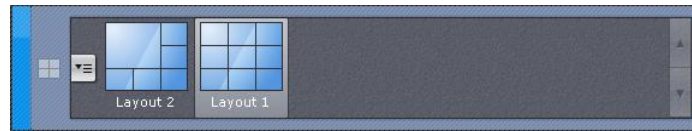


Fig. 6—2 The Layouts ribbon

By default, the standard mode is enabled for the layouts ribbon. The operating mode of the layouts ribbon can be selected in the **Settings** tab.

6.3 The Archive Navigation Panel

The archive navigation panel (Fig. 6—3) is automatically displayed in the right-hand part of the screen when you switch the viewing tile to archive mode.

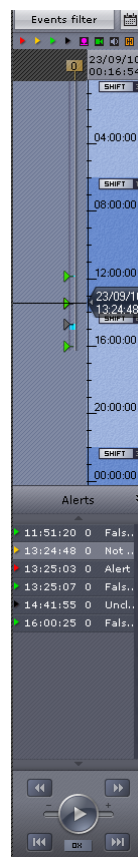


Fig. 6—3 The Archive Navigation Panel

The archive navigation panel is used for the following functions:

1. Navigating in the archive.
2. Playback of recordings.
3. Selecting playback mode: forward or backward.

4. Setting playback speed.
5. Selecting alerts for display on the timeline and in the alert events list.
6. Viewing the list of the most recent alert events of the selected type.

6.4 The PTZ Control Panel

The PTZ control panel is displayed automatically in the right-hand part of the screen when the viewing tile of a PTZ camera is activated in real time mode (Fig. 6—4).



Fig. 6—4 The PTZ control panel

The PTZ control panel is used for the following functions:

1. Controlling PTZ video cameras.
2. Setting and switching to camera presets.
3. Launching/stopping patrolling.

7 Conclusion

More detailed information on the *Axxon Smart* software package is presented in the documents titled:

1. *The Axxon Smart Software Package. User Guide.*
2. *The Axxon Smart Software Package. Recommended platforms.*

Please do not hesitate to send in your comments or requests concerning this Guide should be directed to the AxxonSoft Documentation and Training Department at documentation@axxonsoft.com.

Axxon Soft Inc., Beryozovaya alleya, building5, section 5a, Moscow, Russia, 127273 , www.axxonsoft.com
