

AxxonSoft Group LLC

ACFA Intellect

Configuration and Operation Manual for the

Galaxy Dimension

Integration Module

Version 1.1

Moscow 2014



Contents

CONTENTS	2
1 LIST OF TERMS	3
2 INTRODUCTION	4
2.1 Document purpose.....	4
2.2 Purpose of the Intellect fire and security alarm subsystem	Error! Bookmark not defined.
2.3 General information on the Galaxy Dimension integration module	4
3 CONFIGURING THE GALAXY DIMENSION INTEGRATION MODULE	6
3.1 Procedure for configuring the Galaxy Dimension integration module	6
3.2 Configuring interaction between Intellect and the Galaxy Dimension control panel	6
3.2.1 Procedure for configuring interaction between Intellect and the Galaxy Dimension control panel	6
3.2.2 Configuring the connection between Intellect and the Galaxy Dimension control panel	7
3.2.3 Configuring the data exchange protocol	8
3.2.4 Configuring users of the Galaxy Dimension control panel	9
3.3 Configuring the MK7 keyboard.....	10
3.4 Configuring Galaxy Dimension security zones	11
3.5 Configuring Galaxy Dimension groups.....	12
4 OPERATING THE GALAXY DIMENSION INTEGRATION MODULE	15

1 List of terms

Group – logical partition corresponding to the selected portion of system resources of Galaxy Dimension, such as security zones, users, ports, etc. Groups are utilized in order to more efficiently manage system resources.

MK7 keyboard – LCD keyboard connected to the Galaxy Dimension control panel, used to configure and manage the control panel.

Galaxy Dimension control panel – panel used to monitor and manage fire and security alarms and access control devices.

Operator’s menu – menu used to configure the Galaxy Dimension control panel.

Security zone – individually programmable port in the Galaxy Dimension control panel that performs alarm functions. Security zones are joined into groups of 8 using port expanders (RIO).

2 Introduction

2.1 Document purpose

The Galaxy Dimension integration module configuration and operation manual is an informational reference aid intended for use by configuration specialists and operators of the Galaxy Dimension module. This module is part of the fire and security alarm subsystem implemented with the *ACFA Intellect* software package.

This Guide contains the following material:

1. general information on the Galaxy Dimension integration module
2. configuration of the Galaxy Dimension integration module
3. operation of the Galaxy Dimension integration module.

2.2 General information on the Galaxy Dimension integration module

The Galaxy Dimension integration module is a component of the *ACFA Intellect*-based FSA subsystem that enables interaction between the *ACFA Intellect* software package and the Galaxy Dimension system (produced by Honeywell, Inc.).

NOTE. During the writing of this documentation, only the fire and security alarm function of the Galaxy Dimension system has been integrated into ACFA Intellect.

ACFA Intellect interacts with the following components of the Galaxy Dimension system:

1. Galaxy Dimension control panel
2. MK7 keyboard
3. security zone
4. group

NOTE. For more information on components of the Galaxy Dimension system, refer to the official documentation of the Galaxy Dimension control panel.

The Galaxy Dimension integration module performs the following functions:

1. monitors the Galaxy Dimension system
2. manages the Galaxy Dimension system

NOTE. Management of the Galaxy Dimension system in its current integration consists of arming and disarming security zones.

The Galaxy Dimension integration module can be configured once the following steps are completed:

1. Install Galaxy Dimension hardware at the facility
2. Configure the fire and security alarm function of the Galaxy Dimension system (refer to the documentation of the Galaxy Dimension control panel)

Attention!The Galaxy Dimension integration module is configured using the settings assigned at this step.

3. Configure the list of *ACFA Intellect* users.

NOTE. The user list can be configured through the basic version of ACFA Intellect (simplified configuration) or by using the Access Control Service module (advanced configuration). Information on configuring the user list is presented in the software's reference documentation.

3 Configuring the Galaxy Dimension integration module

3.1 Procedure for configuring the Galaxy Dimension integration module

The Galaxy Dimension integration module is configured through the following steps:

1. Configure interaction between *ACFA Intellect* and the Galaxy Dimension control panel
2. Configure the MK7 keyboard, which will be used to configure and manage the Galaxy Dimension control panel
3. Configure Galaxy Dimension security zones
4. Configure Galaxy Dimension groups

3.2 Configuring interaction between ACFA Intellect and the Galaxy Dimension control panel

3.2.1 Procedure for configuring interaction between ACFA Intellect and the Galaxy Dimension control panel

Interaction between *ACFA Intellect* and the Galaxy Dimension control panel is configured through the settings panel of the “Galaxy Dimension” object. This object is created from the “Computer” object on the “Hardware” tab of the “System settings” dialog box (see Figure 3.2-1).

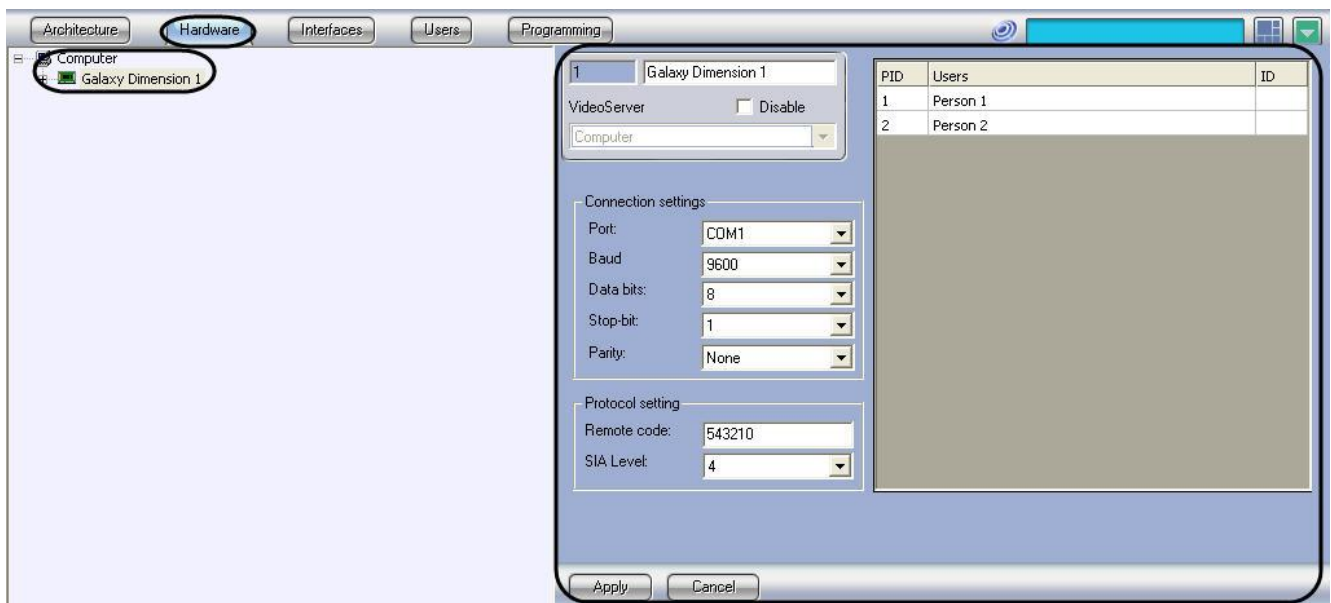


Figure 3.2-1 “Galaxy Dimension” object

Interaction between *ACFA Intellect* and the Galaxy Dimension control panel is configured through the following steps:

1. Configure the connection between *ACFA Intellect* and the Galaxy Dimension control panel
2. Configure the data exchange protocol used by *ACFA Intellect* and the Galaxy Dimension control panel
3. Configure users of the Galaxy Dimension control panel

3.2.2 Configuring the connection between ACFA Intellect and the Galaxy Dimension control panel

ACFA Intellect and the Galaxy Dimension control panel are connected through a COM port.

NOTE. For more information on linking the Galaxy Dimension control panel to a computer, refer to the official documentation of the Galaxy Dimension control panel.

The connection between ACFA Intellect and the Galaxy Dimension control panel is configured as follows:

1. Go to the settings panel of the Galaxy Dimension object (see Figure 3.2-2).

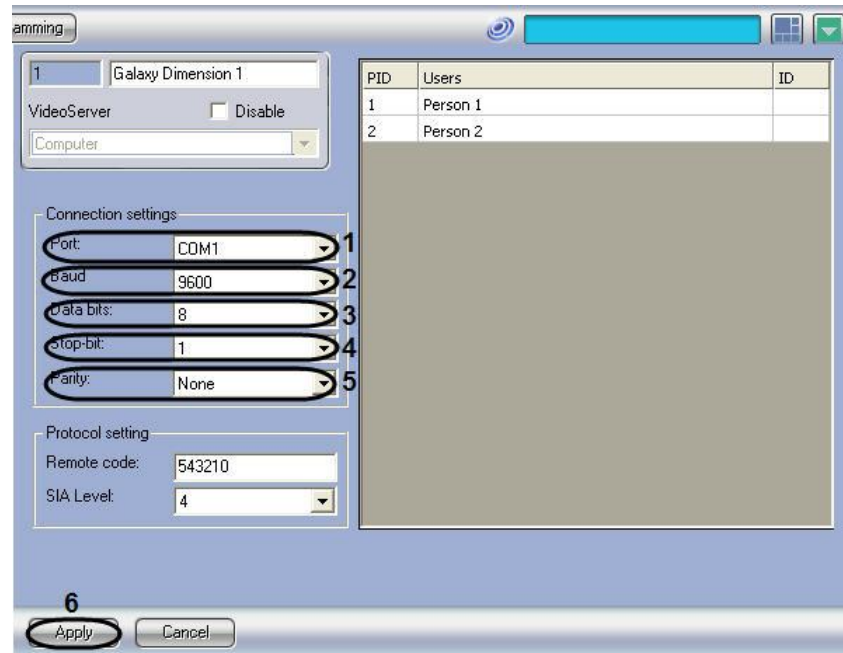


Figure 3.2-2 Configuring the connection between ACFA Intellect and the Galaxy Dimension control panel

2. From the “Port” drop-down list, select the COM port of the Intellect Server to be used to connect with the Galaxy Dimension control panel (see Figure 3.2-2, 1)
3. From the “Baud” drop-down list, select the data exchange rate between the Intellect Server and the Galaxy Dimension control panel. This parameter is expressed in bits per second (see Figure 3.2-2, 2)

NOTE. The set values for steps 2-5 (see Figure 3.2-2) must match the corresponding parameters of the RS232 port linked to the Galaxy Dimension control panel.

4. From the “Data bits” drop-down list, select the number of data bits to be coded by a single transition in signal for data exchange over the COM port (see Figure 3.2-2, 3)
5. From the “Stop bits” drop-down list, select the number of stop bits for data exchange over the COM port (see Figure 3.2-2, 4)
6. From the “Parity” drop-down list, select the necessary parity for data exchange over the COM port (see Figure 3.2-2, 5)
7. To save changes, click Apply (see Figure 3.2-2, 6)

Configuration of the connection between *ACFA Intellect* and the Galaxy Dimension control panel is now complete.

3.2.3 Configuring the data exchange protocol

Data exchange between the *ACFA Intellect* server and the Galaxy Dimension control panel is carried out using the SIA protocol.

NOTE. For more information on protocols used in the Galaxy Dimension system, refer to the official documentation of the Galaxy Dimension control panel.

The SIA protocol is configured as follows:

1. Go to the settings panel of the Galaxy Dimension object (see Figure 3.2-3).

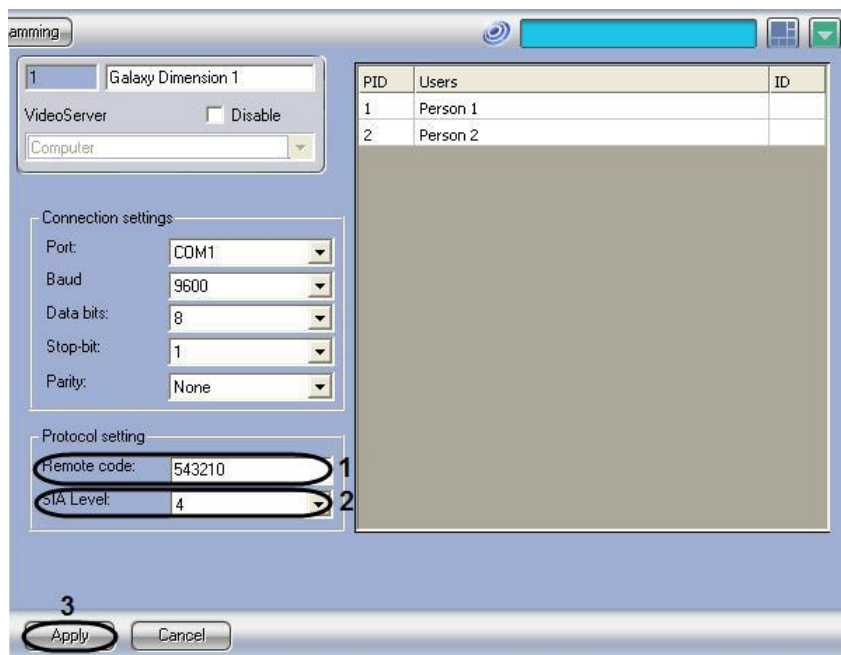


Figure 3.2-3 Configuring the SIA protocol

2. In the “Remote code” field, enter the password used to connect the Intellect Server to the Galaxy Dimension control panel. This password must match the password used to remotely access the panel (see Figure 3.2-3, 1)

NOTE. For more information on passwords in the Galaxy Dimension system, refer to the official documentation of the Galaxy Dimension system, for example, in the document titled “Galaxy Dimension: Setup Guide”.

3. From the “SIA level” drop-down list, select the value corresponding to the required level of interaction between the Intellect Server and the Galaxy Dimension control panel over the SIA protocol (see Figure 3.2-3, 2, Table 3.2-1)

Table 3.2-1

SIA level	Description of the level of interaction between the Intellect Server and the Galaxy Dimension control panel
1	Transmits basic information on the event
2	Same as level 1, but including transmission of advanced event codes
3	Same as level 2, but including transmission of text descriptions of events

SIA level	Description of the level of interaction between the Intellect Server and the Galaxy Dimension control panel
4	Same as level 3, but also allows reception of commands for managing the control panel

NOTE. Full interaction (monitoring, management) between the Intellect Server and the Galaxy Dimension control panel is only provided through the 4th level of SIA.

- To save changes, click Apply (see Figure 3.2-3, 3)

Configuration of the SIA protocol is now complete.

3.2.4 Configuring users of the Galaxy Dimension control panel

It is possible to individually configure *ACFA Intellect* users' access to the Galaxy Dimension control panel. Access to certain functions of panel management can be granted based on the individual user authorized to use *ACFA Intellect*.

NOTE. For more information on users of the Galaxy Dimension control panel, refer to the official documentation of the Galaxy Dimension control panel.

Users of the Galaxy Dimension control panel are configured as follows:

- Go to the settings panel of the Galaxy Dimension object (see Figure 3.2-4).

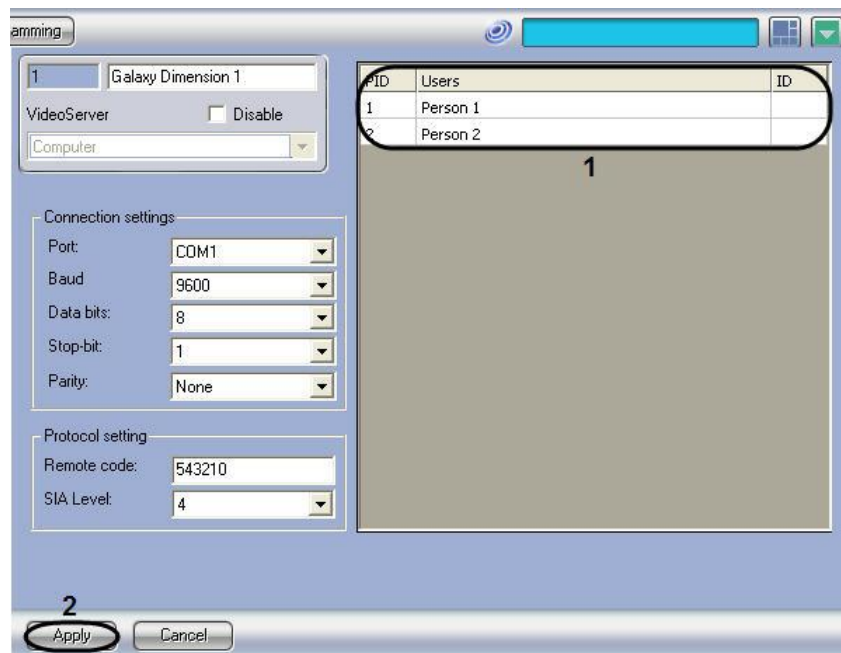


Figure 3.2-4 Configuring *ACFA Intellect* users to use the Galaxy Dimension control panel

- The list of users registered in *ACFA Intellect* are automatically displayed in table 1 (see Figure 3.2-4, 1)
- If an *ACFA Intellect* user is also a user of the Galaxy Dimension control panel, then the user's identification number (from 0 to 255) for the panel should be entered into the "ID" column of table 1 (see Figure 3.2-4)
- To save changes, click Apply (see Figure 3.2-4, 2)

Configuration of Galaxy Dimension control panel users is now complete.

3.3 Configuring the MK7 keyboard

The MK7 keyboard is configured through the settings panel of the “MK7 keyboard” object. This object is created from the “Galaxy Dimension” object on the “Hardware” tab of the “System settings” dialog box (see Figure 3.3-1).

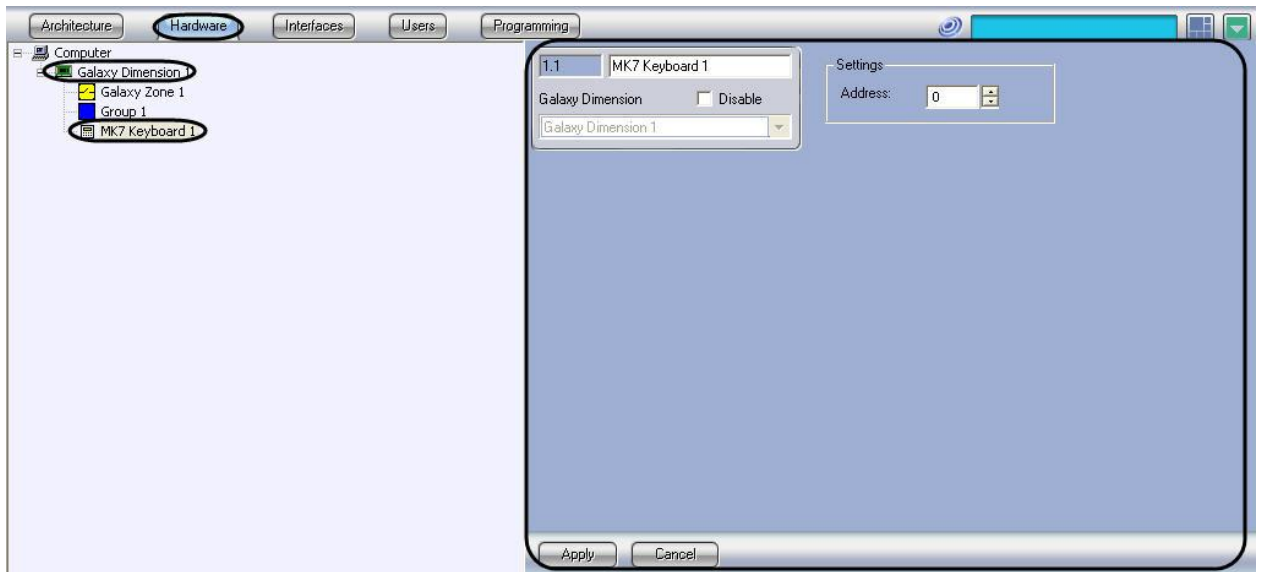


Figure 3.3-1 “MK7 keyboard” object

NOTE. The “Galaxy Dimension” object must match the Galaxy Dimension panel to which the keyboard is connected.

The MK7 keyboard is configured as follows:

1. Go to the settings panel of the “MK7 keyboard” object (see Figure 3.3-2)

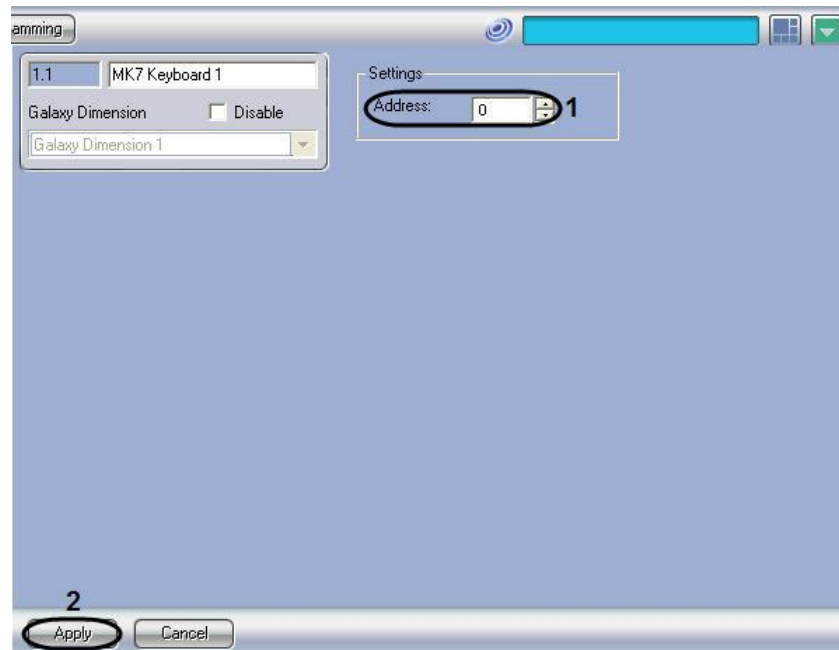


Figure 3.3-2 MK7 keyboard settings

2. In the “Address” field, enter the address displayed for the specific keyboard into the operator’s menu of the Galaxy Dimension control panel (see Figure 3.3-2, 1)

3. To save changes, click Apply (see Figure 3.3-2, 2)
4. Repeat steps 1-3 for all MK7 keyboards connected to the panel.

Configuration of the MK7 keyboard is now complete.

3.4 Configuring Galaxy Dimension security zones

Security zones of the Galaxy Dimension control panel are configured in the settings panel of the “Security zone” object. This object is created from the “Galaxy Dimension” object on the “Hardware” tab of the “System settings” dialog box (see Figure 3.4-1).

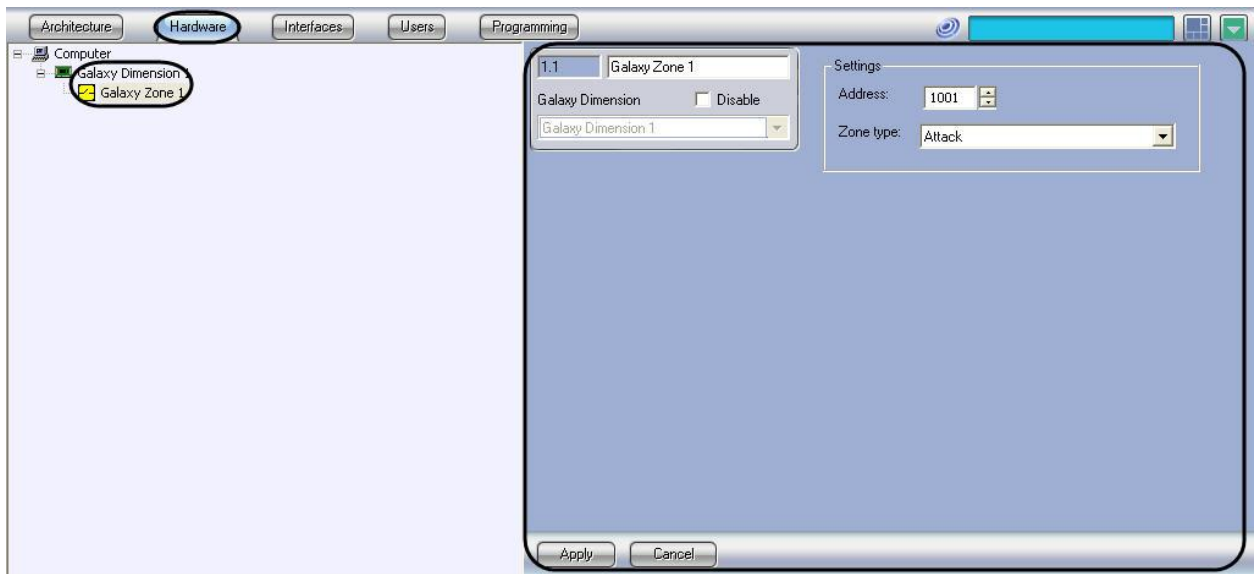


Figure 3.4-1 “Security zone” object

NOTE. Up to 32 “Security zone” objects can be created from one “Galaxy Dimension” object.

Galaxy Dimension security zones are configured as follows:

1. Go to the settings panel of the “Security zone” object (see Figure 3.4-2)

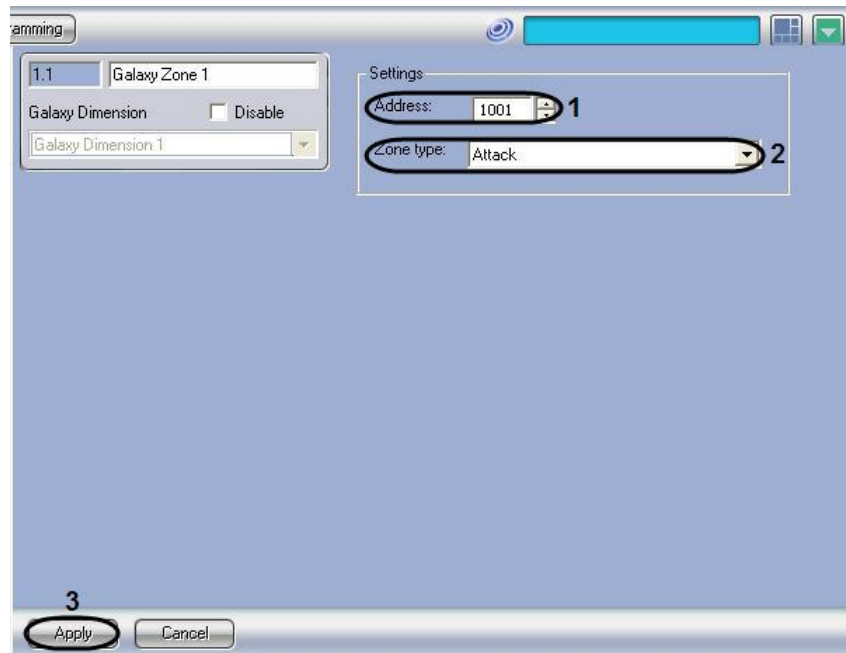


Figure 3.4-2 Configuring a security zone for the Galaxy Dimension control panel

2. In the “Address” field, enter the address displayed for the specific security zone into the operator’s menu of the Galaxy Dimension control panel (see Figure 3.4-2, 1)

NOTE. For more information on security zone addressing, refer to the official documentation of the Galaxy Dimension control panel.

3. Select the type of security zone from the “Zone type” drop-down list (see Figure 3.4-2, 2). The selected zone type will be displayed in the “Event log” window when an alarm event is registered in the given zone.
4. To save changes, click Apply (see Figure 3.4-2, 3)
5. Repeat steps 1-4 for all security zones.

Configuration of Galaxy Dimension security zones is now complete.

3.5 Configuring Galaxy Dimension groups

Galaxy Dimension control panel groups are configured in the settings panel of the “Group” object. This object is created from the “Galaxy Dimension” object on the “Hardware” tab of the “System settings” dialog box (see Figure 3.5-1).

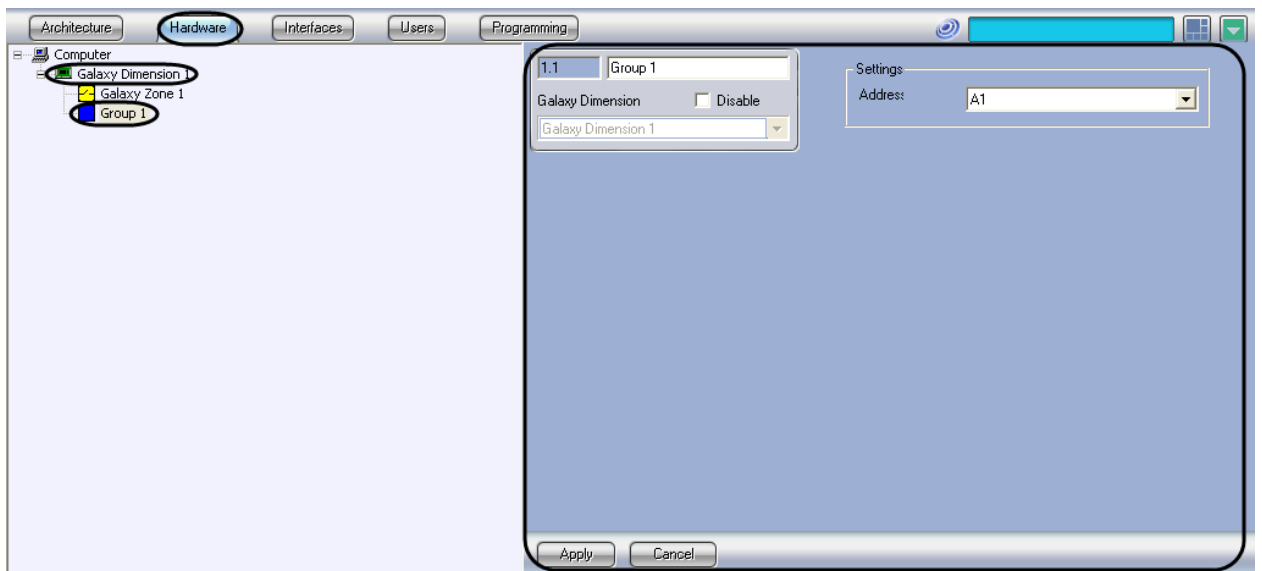


Figure 3.5-1 “Group” object

NOTE. Up to 32 “Group” objects can be created from one “Galaxy Dimension” object.

Galaxy Dimension groups are configured as follows:

1. Go to the settings panel of the “Group” object (see Figure 3.5-2)

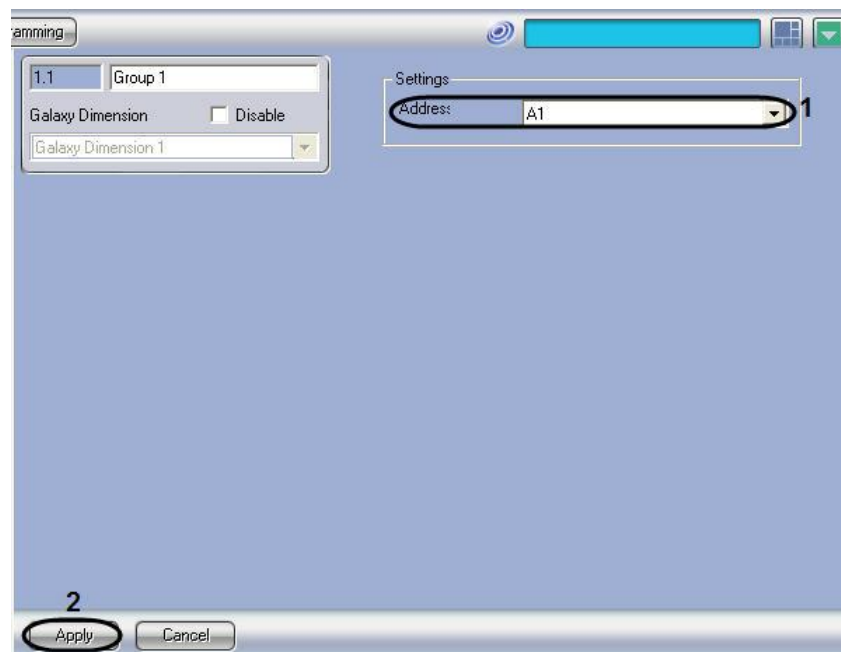


Figure 3.5-2 Configuring a group

2. In the “Address” drop-down list, select the address displayed for the specific group in the operator’s menu of the Galaxy Dimension control panel (see Figure 3.5-2, 1)

NOTE. For more information on group addressing, refer to the official documentation of the Galaxy Dimension control panel.

3. To save changes, click Apply (see Figure 3.5-2, 2)
4. Repeat steps 1-3 for all Galaxy Dimension control panel groups.

Configuration of Galaxy Dimension groups is now complete.

4 Operating the Galaxy Dimension integration module

The following interface objects are used to operate the Galaxy Dimension integration module:

1. Map
2. Event log

Information on how to configure the “Map” and “Event log” interface objects is presented in the document titled "Intellect Software Package: Administrator’s Guide”.

Operation of the specified interface objects is described in detail in the document titled “Intellect Software Package: Operator’s Guide”.