

AxxonSoft

ACFA Intellect

Setup and User Guide for the

Gate Parking

Integration Module

Version 1.5

Moscow 2014



Table of Contents

TABLE OF CONTENTS	2
1 LIST OF TERMS.....	3
2 INTRODUCTION.....	4
2.1 Purpose of the Document	4
2.2 General Information on the Gate Parking Integration Module.....	4
3 CONFIGURING THE GATE PARKING INTEGRATION MODULE;	4
3.1 Steps to Configure the Gate Parking Integration Module.....	4
3.2 Configuring the Gate Parking ACS's Connection.....	5
3.3 Automatically creating the object tree.....	6
3.4 Forwarding the Gate Parking ACS's configuration to the controllers	7
3.5 Configure the Gate Parking controller	8
3.5.1 Configure the connection of Gate Parking controller	9
3.5.2 Managing the configuration of a Gate Parking controller	10
3.5.3 Configuring the Gate Parking controller parameters.....	10
3.5.4 Configuring access modes.....	12
3.5.5 Configuring reactions	13
4 WORKING WITH THE GATE PARKING INTEGRATION MODULE.....	14
4.1 General Information	14
4.2 Managing Gate Parking controller.....	14
5 APPENDIX 1. AUTOMATIC UPDATING THE FLASH MEMORY OF GATE CONTROLLER	15
5.1 General information	15
5.2 Program example	15

1 List of Terms

Access Control System (ACS): a hardware and software suite for access control and management.

Integrated system *ACS Gate Parking*: a system, which integrates hardware and software. The system is used to manage access, to record and to keep track of vehicle movements, and to manage actuators at exit/entry points of stay. The system supports permanent and temporary passes and the access approval mode.

Intellect Server: a computer that has the **Server** installation version of the *Intellect* software package installed.

Controller: the main hardware device in the *Gate Parking ACS*. This device enables receiving and processing the information signals that come from card readers, managing external actuators (for example, locks) by using built-in relays, and controlling security zones.

Time schedule - a set of any number of time intervals during a day (24 hours) defined for several days (1 to 366), and the time intervals during specific dates. Time schedule defines a schedule of access to the secured object.

2 Introduction

2.1 Purpose of the Document

The *Setup and User Guide for the Gate Parking Integration Module* is a reference guide for administrators and operators of the *Gate Parking* module. This module is part of access control systems (ACS) implemented based on the *ACFA Intellect* software package.

This Guide contains:

1. general information on the *Gate Parking* integration module;
2. guidance on how to configure the *Gate Parking* integration module;
3. guidance on how to work with the *Gate Parking* integration module.

2.2 General Information on the Gate Parking Integration Module

The *Gate* integration module is part of ACS systems based on *ACFA Intellect*. The module is used for:

1. configuring the *Gate Parking ACS* (manufactured by Ravelin-LTD);
2. enabling interaction between the *Gate Parking ACS* and *ACFA Intellect* (monitoring and management).

Note: Detailed information on the Gate Parking ACS can be found in the vendor documentation.

Before configuring the *Gate Parking* integration module:

1. Install the *Gate Parking ACS* hardware at the secure facility (refer to the *ACS Gate Parking* reference documentation).
2. Connect the *Gate Parking ACS* to the Server.

3 Configuring the Gate Parking Integration Module;

3.1 Steps to Configure the Gate Parking Integration Module

To configure the *Gate Parking* integration module:

1. configure the *Gate Parking ACS's* connection to the *Intellect Server*
2. automatically create the object tree;
3. forward the *Gate Parking ACS's* configuration to the controllers;
4. configure the *Gate Parking* controllers;
5. set the access modes;
6. configure the automatic reactions of *Gate Parking* controllers.

3.2 Configuring the Gate Parking ACS's Connection

To configure the *Gate Parking ACS's* connection, use the relevant **Gate Parking ACS** object. To create this object, go to the **Settings** dialog box, click the **Hardware** tab, and select the parent **Computer** object (Fig. 3.2—1).



Fig. 3.2—1 Gate Parking object

Note. The **Module:** field shows the current version of the Gate Parking integration module (Fig. 3.2—1).

To configure the *Gate Parking* integration module's connection:

1. Go to the **Gate Parking ACS** object's settings panel (Fig. 3.2—2).

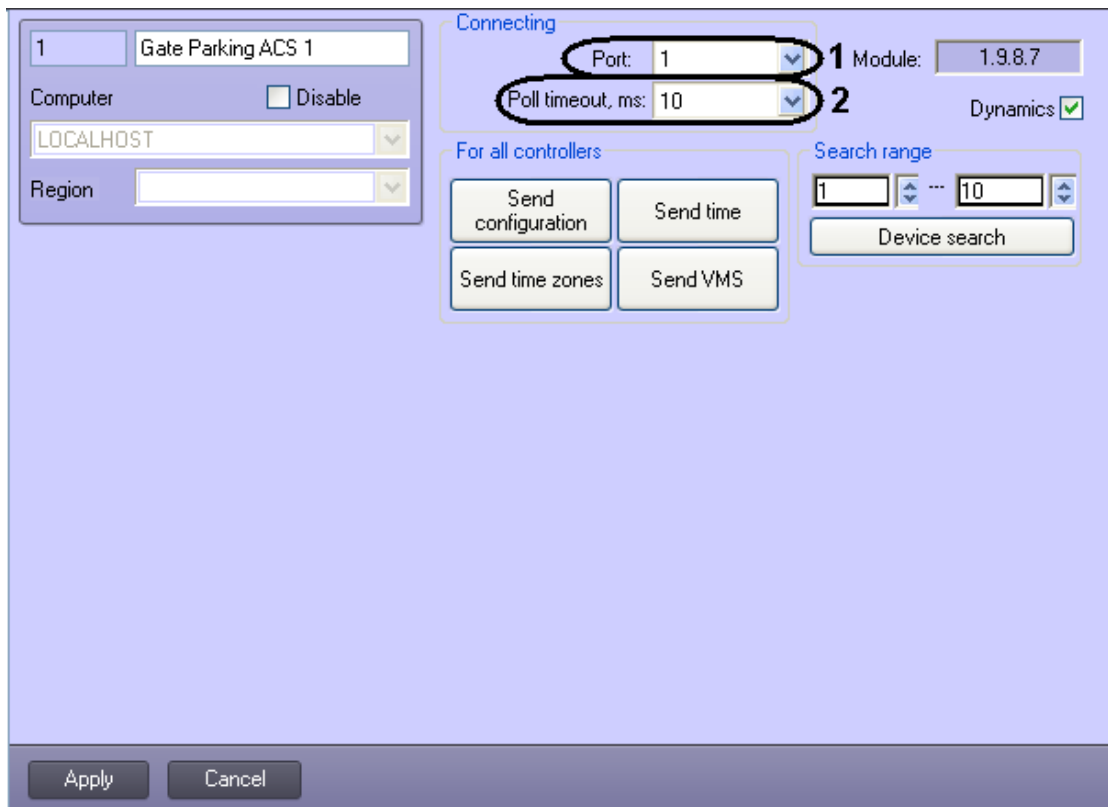


Fig. 3.2—2 Configuring the connection of a GATE PARKING object

2. From the **Port:** drop-down list select the number of the COM port to connect to *Gate Parking ACS* (Fig. 3.2—2, **1**).
3. From the **Poll timeout, ms:** drop-down list select the time period in milliseconds between two consecutive polls of the device connection (Fig. 3.2—2, **2**).
4. Click **Apply** (Fig. 3.2—2, **3**).

The *Gate Parking ACS*'s connection is now configured.

3.3 Automatically creating the object tree

To automatically create the object tree, do the following::

1. Go to the **Gate parking ACS** object's setup panel (Fig. 3.3—1).

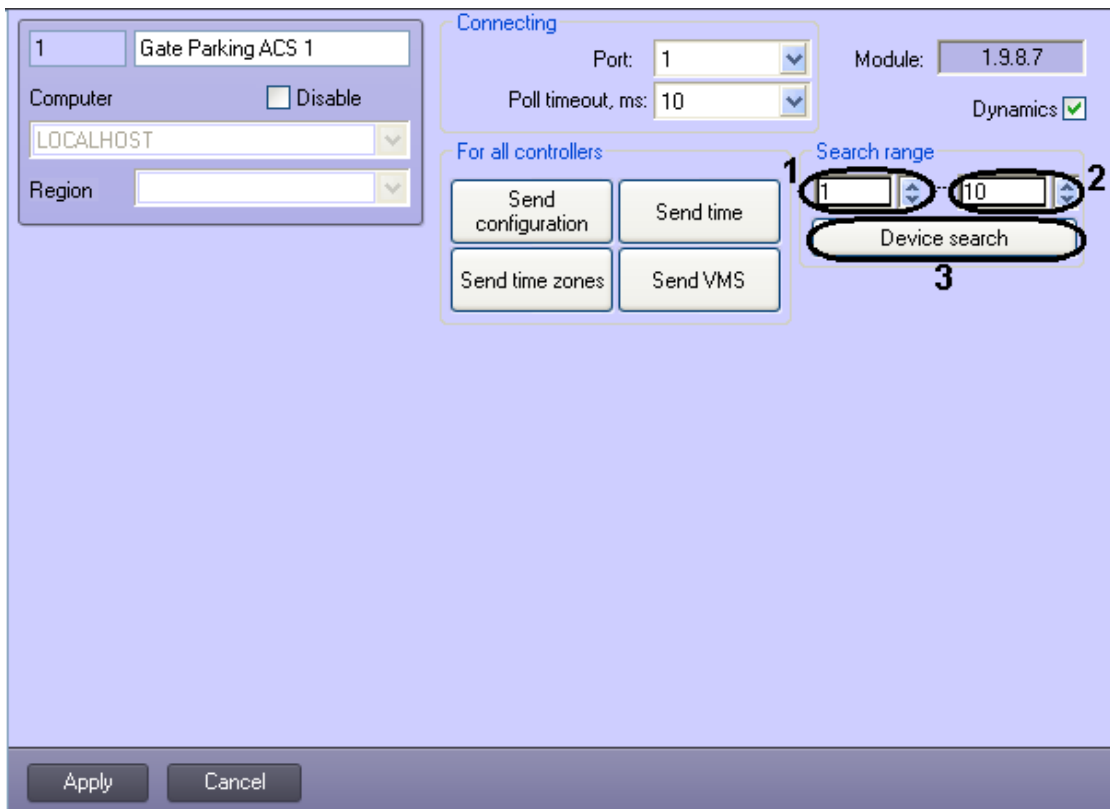


Fig. 3.3—1 Automatically creating the object tree

2. Enter the controller's address range: in the **from** field, enter the first address in the range (Fig. 3.3—1, 1); in the **to** field, enter the last address (Fig. 3.3—1, 2).
3. Click **Device search** (Fig. 3.3—1, 3).

This launches an automatic search for hardware-configured and connected *GateParking* controllers. Objects corresponding to found controllers are automatically created in the object tree under the relevant *Gate Parking ACS* object.

The *Gate Parking ACS*'s object tree is now created.

3.4 Forwarding the Gate Parking ACS's configuration to the controllers

Forwarding the configuration to all *Gate Parking* controllers is described in this section. Also it is possible to forward the configuration to each controller separately (see the *Managing the configuration of a Gate Parking controller* section).

To forward the *Gate Parking ACS*'s configuration, do the following:

1. Go to the **For all controllers** group in the **Gate Parking ACS** object's setup panel (Fig. 3.4—1).

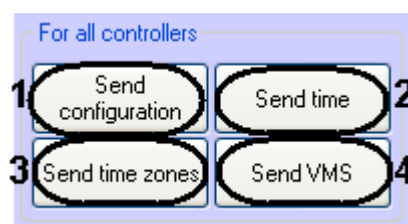


Fig. 3.4—1 Forwarding the Gate Parking ACS's configuration

2. To forward the *Gate Parking ACS's* configuration to all the controllers, click **Send configuration** button (Fig. 3.4—1, **1**).

Note: This records the following in each controller's internal memory:

1. *the time zones;*
2. *the data on the system's users;*
3. *the user access levels.*

3. To synchronize the time of all the controllers with the Server time, click **Send time** button (Fig. 3.4—1, **2**).
4. To forward time zones to all controllers click **Send time zones** button (Fig. 3.4—1, **3**).
5. To forward data of the *Visitor Management System* module (users, access levels, time zones, etc.) click the **Send VMS** button (Fig. 3.4—1, **4**).

Forwarding of the *Gate Parking* configuration is completed.

For automatically forwarding data of the *Visitor Management System* module to controller set the **Dynamics** checkbox (Fig. 3.4—2) and click the **Apply** button.

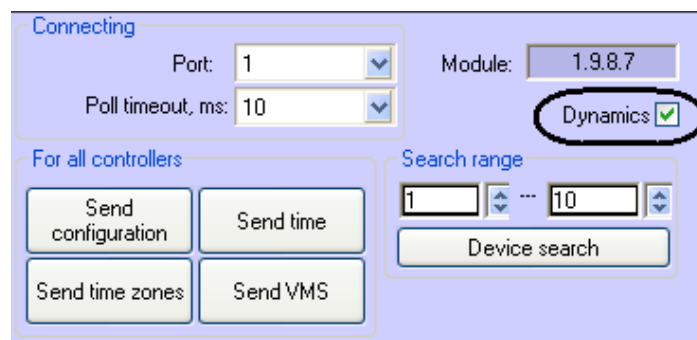


Fig. 3.4—2 Dynamically forwarding of the VMS data

3.5 Configure the Gate Parking controller

Settings of the *Gate Parking* controllers is performed on the **Gate Parking access point object's** settings panel created on basis of the **Gate Parking** object on the **Hardware** tab of the **System Settings** dialog box (Fig. 3.5—1).

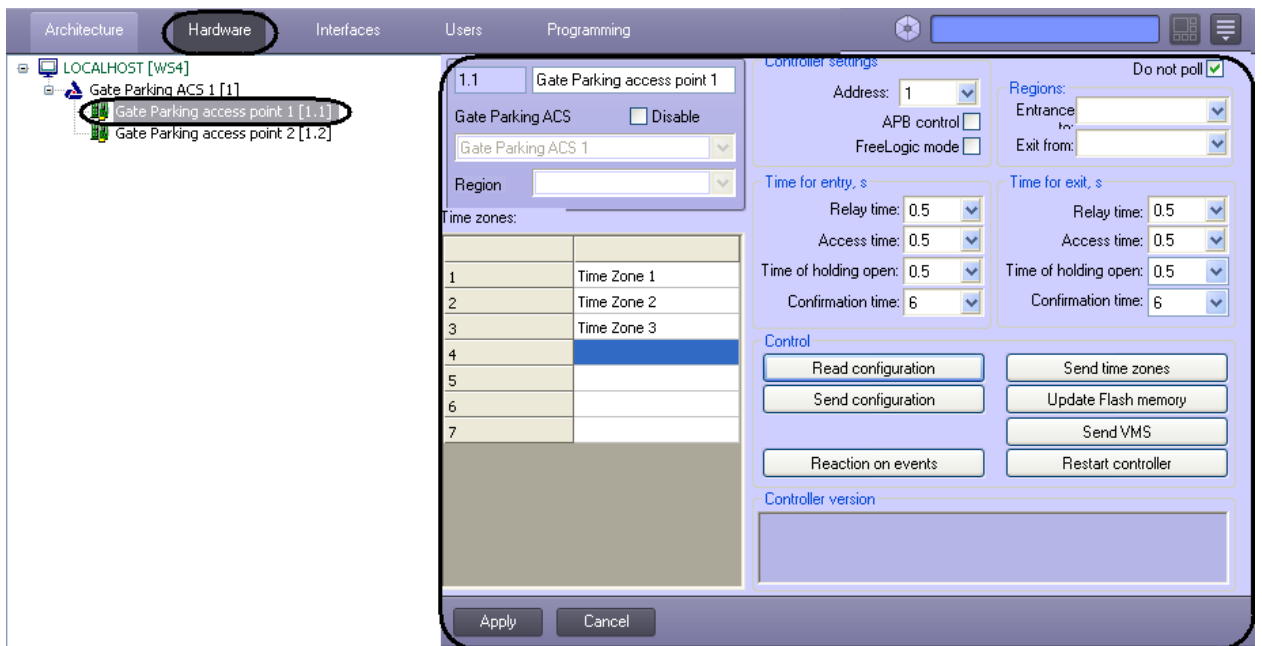


Fig. 3.5—1 Gate Parking access point object

3.5.1 Configure the connection of Gate Parking controller

To configure the connection of a *Gate Parking* controller, do the following:

1. Go to the settings panel of the relevant **Gate parking access point** object (Fig. 3.5—2).

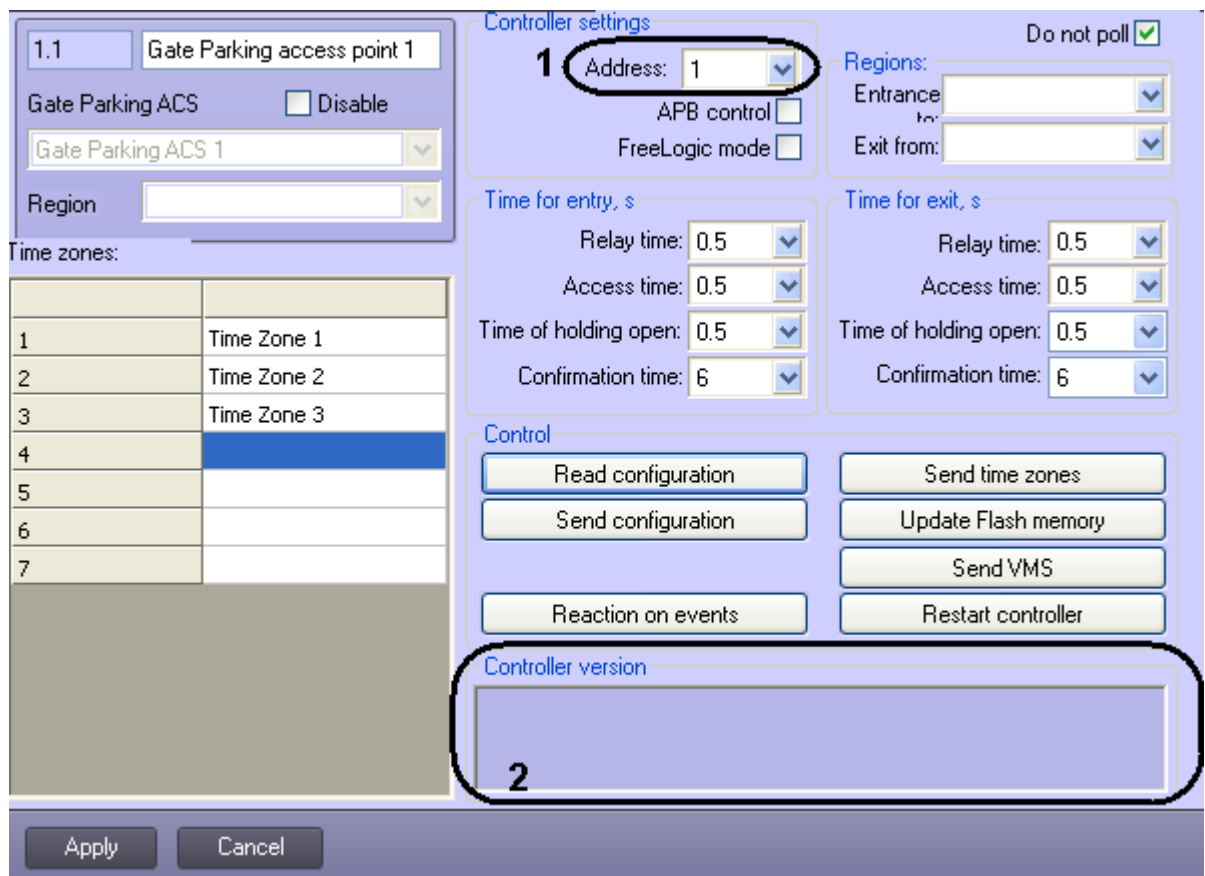


Fig. 3.5—2 Configuring a *Gate* controller

2. From the **Address** drop-down list select the controller address (Fig. 3.5—2, 1).

3. Click **Apply**.

*Note: If the controller with specified address is connected to the Intellect Server, you will see the following controller parameters in the **Controller version** group (Fig. 3.5—2, 3):*

1. *controller version;*
2. *controller firmware version;*
3. *controller operation mode.*

If the controller parameters are not shown, check the controller's connection to the computer (refer to the Gate Parking ACS vendor documentation).

The *Gate Parking* controller is now configured.

3.5.2 Managing the configuration of a Gate Parking controller

For a *Gate Parking* controller, configuration management includes the following actions:

1. Reading configuration of the *Gate Parking* controller. To perform this action click the **Read configuration** button (Fig. 3.5—3, 1). To view the read configuration select the **Gate parking access point** object again.



Fig. 3.5—3 Managing a *Gate* controller

2. Forwarding configuration to the *Gate Parking* controller. Click the **Send configuration** button to perform the forwarding (Fig. 3.5—3, 2).
3. Forwarding time zones to the *Gate Parking* controller. Click the **Send time zones** button to perform forwarding of time zones (Fig. 3.5—3, 3).
4. Forwarding data of the Visitor management System (users, access level, time zones, etc.). Click the **Send VMS** button to perform this action (Fig. 3.5—3, 5).
5. Updating the *Gate Parking* controller's memory. To update the memory, click **Update Flash memory** (Fig. 3.5—3, 4).

Attention! Update the controller memory once per day. Use the ACFA Intellect's program or script for automatic memory update (see Appendix 1. Automatic updating the Flash memory of Gate controller section).

6. Restarting the controller. To restart the controller, click **Restart controller** (Fig. 3.5—3, 6).

3.5.3 Configuring the Gate Parking controller parameters

To configure the *Gate Parking* controller, do the following:

1. Go to the *Gate Parking* access point object's settings panel (Fig. 3.5—1).

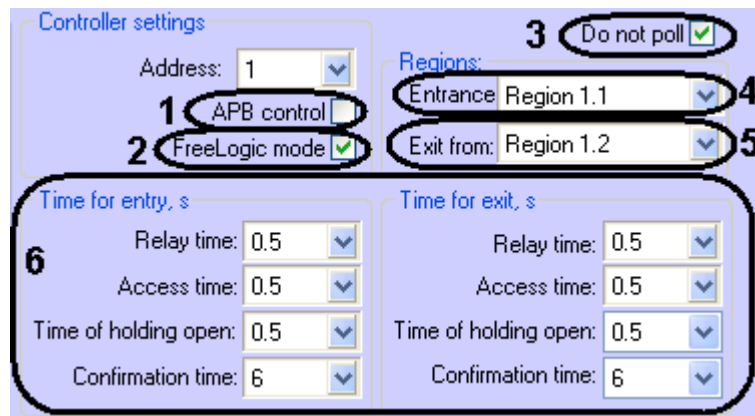


Fig. 3.5—1 Settings of the Gate Parking access point object

2. Set the **APB control** checkbox to activate the antipassback (Fig. 3.5—1, 1).
3. Set the **FreeLogic mode** checkbox to activate the reactions mode on which the controller can enable and disable exits when some specified events appear inside of controller (Fig. 3.5—1, 2).
4. Set the **Do not poll** checkbox to lock receiving of events from controller (Fig. 3.5—1, 3).
5. From the **Entrance to:** drop-down list select the **Region** object corresponding to the area located in the site of exit through the reader (Fig. 3.5—1, 4).
6. From the **Exit from:** drop-down list select the **Region** object corresponding to the area located on the site of entry through the reader (Fig. 3.5—1, 5).
7. Configure the lock parameters for passes on entry and exit (Fig. 3.5—1, 6):
 - 7.1 From the **Relay time:** drop-down list select the time period in seconds during which the lock will be opened.
Attention! If the relay time equal to 0 the lock is failed to open by available ways: using the key, button or corresponding command.
 - 7.2 From the **Access time:** drop-down list select the time period in seconds during which the user can open the door.
Note. Access time and relay time start to count off from the moment of relay trigerring (i.e. lock opening), so the access time can't be less than relay time.
 - 7.3 From the **Time of holding open:** drop-down list select the time period in seconds after door opening during which the door is to be closed.
Note. If the door will not be closed after time of holding open expire then the Door not closed events is fixed. It is followed by signal and light indication till the door will be closed.
 - 7.4 From the **Confirmation time:** drop-down list select the time period in seconds during which access is to be confirmed by card (see *Configuring access modes* section).
Attention! If the confirmation time is 0 the confirmation timeout is not limited.
8. Configure time zones in case of users have access level with time zone different from **Always** and **Never**. For each time zone of *Gate Parking* controller select the time zone of the *ACFA Intellect* software from the corresponding drop-down list.

Time zones:	
1	Time Zone 1
2	Time Zone 2
3	Time Zone 3
4	
5	
6	
7	

Fig. 3.5—2 Time zones configuring

9. Click the **Apply** button.

Configuring parameters of the *Gate Parking* controller is completed.

3.5.4 Configuring access modes

The *Gate Parking ACS* supports four operation modes of user access card (Table 3.5—1).

Table 3.5—1 Description of card operation modes

Card operation mode	Description
Card only	Only card is sufficient for access
Card and pin	Card is to be confirmed by PIN-code for access
Master	Only card is sufficient for access + it is confirmation card for access card of Slave type
Slave	Card is to be confirmed by confirmation card (Master type)

Set one or more of specified modes to users to configure the access modes.

To configure the access modes of users, do the following:

1. Go to the user panel of the *Visitor Management System* module (see the Visitor Management System program module guide, Fig. 3.5—3).

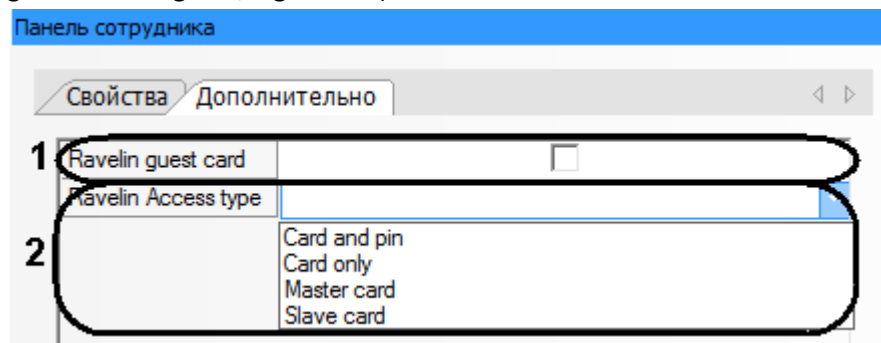


Fig. 3.5—3 Access modes configuring

2. From the **Ravelin Access type** drop-down list select the user access mode (Fig. 3.5—3, 2). If the mode is not selected the access will be granted according to the access level.
3. Set the **Ravelin guest card** checkbox to define some user as guest (Fig. 3.5—3, 1).
4. Click the **Save** button.
5. To configure access modes for all users repeat steps 1-3 for each of them.
6. If the dynamic forwarding the controller configuration is set the access modes will be enabled immediately. Otherwise forward the data of the Visitor Management System module to the Gate Parking controller (see *Managing the configuration of a Gate Parking controller* section).

Configuring of access modes is completed.

3.5.5 Configuring reactions

It is possible to enable or disable (permanently or on time from 1 to 255 seconds) one from eight controlled exits when some event is received if the reaction mode is activated in the system. Some executive or warning device can be connected to this exit.

To configure reactions, do the following:

1. Go to the **Gate parking access point** object's settings panel and click the **Reaction on events** button (Fig. 3.5—4).

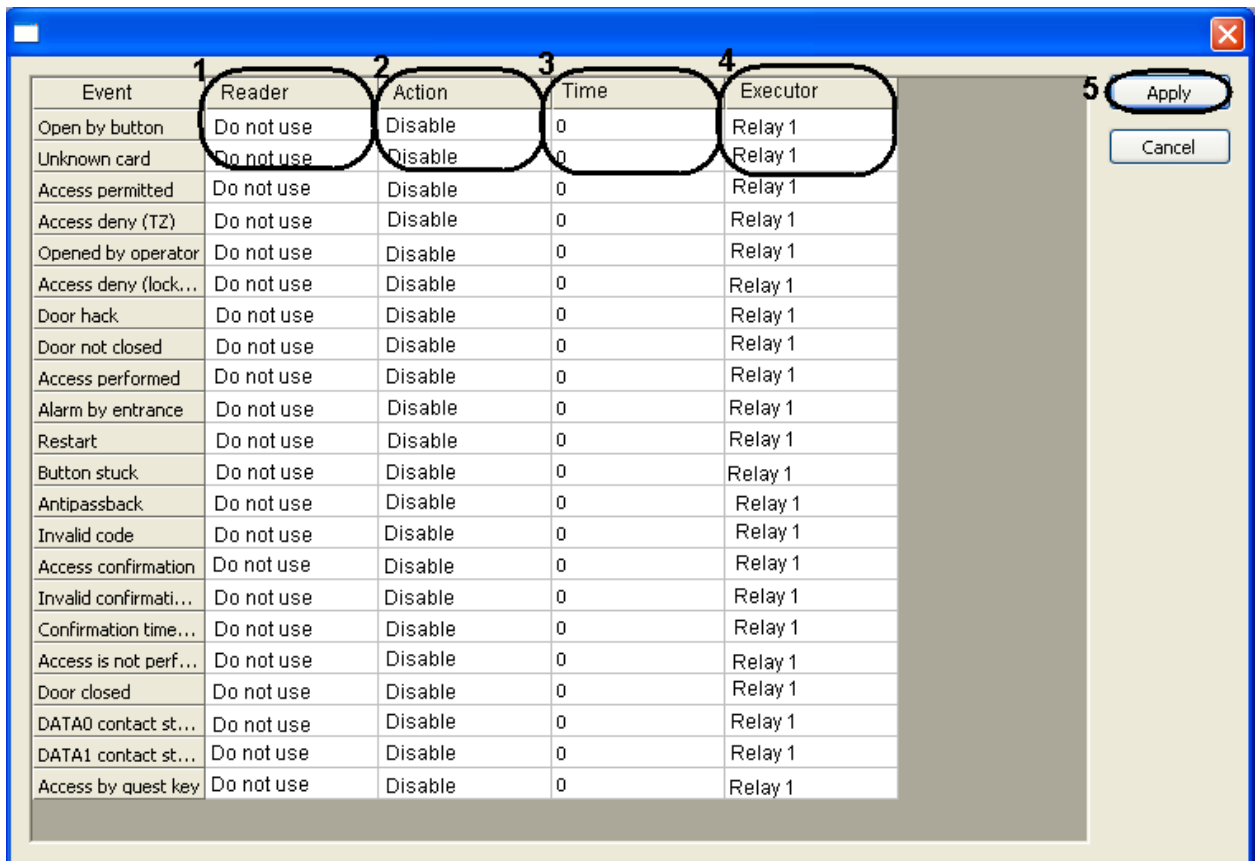


Fig. 3.5—4 Configure reaction on event

2. The list of events for which reactions can be configured is presented in the relevant column. To set reaction on the event, do the following:
 - 2.1 From the corresponding list select reader on which the event is to be performed (Fig. 3.5—4, 1).

Note. Reader 1 – reader on entry, Reader 2 – reader on exit.
 - 2.2 Select the performed action (Fig. 3.5—4, 2).
 - 2.3 Set the action performing time in the range from 1 to 255 seconds in the **Time** column (Fig. 3.5—4, 3).
 - 2.4 Select the exit which is to be enabled or disabled in the **Executor** column (Fig. 3.5—4, 4).
3. Click the **Apply** button (Fig. 3.5—4, 5).
4. Click the **Apply** button on the **Gate Parking** access point object's settings panel.
5. Forward configuration to the controller (see the *Managing the configuration of a Gate Parking controller* section).

Configuring of reactions is completed.

4 Working with the Gate Parking Integration Module

4.1 General Information

To work with the *Gate Parking* integration module, use the following interface objects:

1. **Map;**
2. **Event log.**

The information on how to configure these interface objects can be found in the *Intellect* administrator guide.

The detailed information on how to work with the interface objects can be found in the *Intellect* operator guide.

4.2 Managing Gate Parking controller

To manage a *Gate Parking* controller, go to the **Map** window and use the menu of the relevant **Gate Parking controller** object (Fig. 4.2—1, Table 4.2—1).

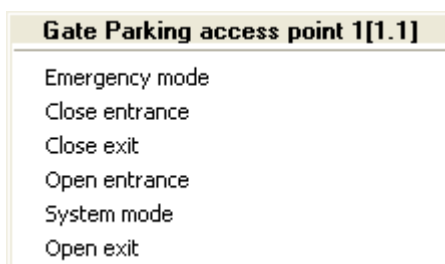


Fig. 4.2—1 Gate Parking controller menu

Table 4.2—1 Gate Parking controller menu functions

Menu item	Executed function
System mode	Switches the <i>Gate Parking</i> controller to system (main) mode
Emergency mode	Switches the <i>Gate Parking</i> controller to emergency mode
Close entrance	Close the opened entrance
Close exit	Close the opened exit
Open entrance	Open entrance for Relay time
Open exit	Open exit for Relay time

5 Appendix 1. Automatic updating the Flash memory of Gate controller

5.1 General information

Automatic updating the Flash memory of *Gate Parking* controller can be performed using the programming functional of *ACFA Intellect* software:

1. programs in the embedded programming language of *ACFA Intellect* software;
2. script in the JavaScript language.

Detailed information on how to write programs and skripts in *ACFA Intellect* software is given in *INTELLECT Software Package: Programming Guide* and *INTELLECT Software Package: Programming Guide (Jscript)* documents.

5.2 Program example

For automatic updating the Flash memory of *Gate Parking* controller use the following program:

```
OnTime (W,D,X,Y,"00","00","10")
{
// program will function every day at 00 hours 00 minutes and 10 seconds
DoReact("GATE_CTRL","1.1","UPDATE_FLASH");
//The Flash memory update in the Gate controller with the «1.1» ID
}
```