



## Quick Guide

10/8/2013

1. Quick Start Guide. Introduction	3
2. Installing the Software Package	3
3. Licensing the Software package	4
4. Starting and closing the Axxon Next software	6
5. Configuring the Axxon Next software package	7
6. Operating the Axxon Next software package	11

# Quick Start Guide. Introduction

On page:

- [Document purpose](#)
- [Purpose of the Axxon Next software package](#)

## Document purpose

This document, titled [Quick Start Guide](#), is intended to be used as a concise guide for installing and starting the Axxon Next software package as well as for configuring and using its main functions (video surveillance, audio surveillance, pan/tilt/zoom devices management).

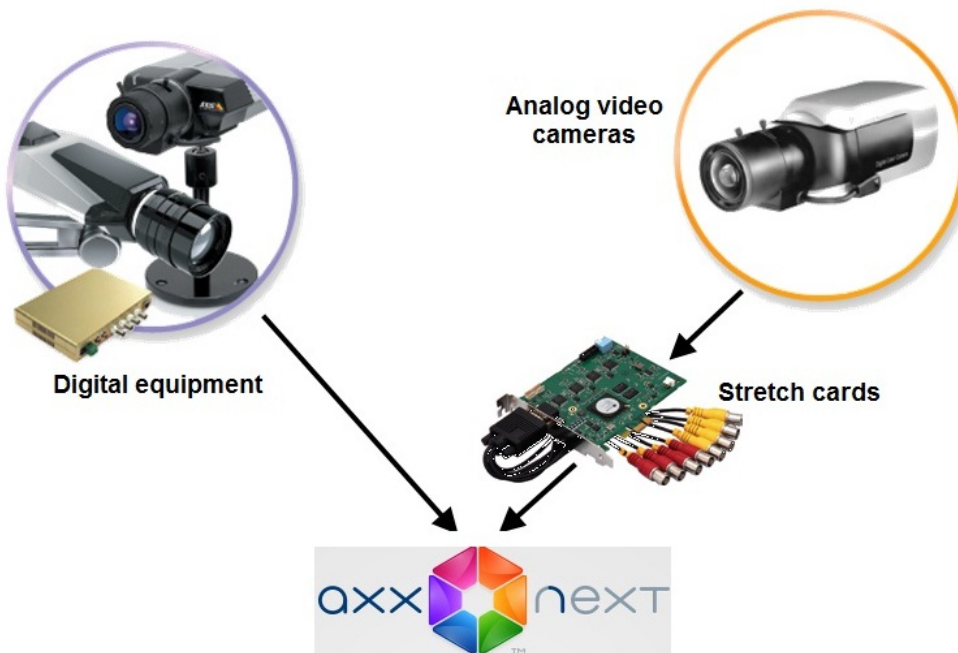
More detailed information on the Axxon Next software package is presented in the documents titled [User Guide](#) and [Recommended platforms](#).

## Purpose of the Axxon Next software package

The Axxon Next software package is an entry-level product in the Axxon product line developed by AxxonSoft. Security systems based on Axxon Next range from home security systems (for an apartment or house) to professional security systems for small and midsize businesses (hotels, automotive service centers, shops, parking structures, etc.).

Video and audio surveillance of guarded locations, video analysis and rapid response to suspicious situations without operator involvement, and storage and export of obtained data are just a few of Axxon Next's many functions.

The Axxon Next software package enables the user to accomplish a wide spectrum of tasks, as it works both with digital equipment and with analog video cameras (through Stretch cards), and also makes it possible to create a hybrid security system containing both kinds of equipment.




The Axxon Next software package supports touch-sensitive monitors.

## Installing the Software Package

First of all, you have to install the hardware and software components of the Axxon Next software

package.

 Note

Refer to the document titled [Recommended Platforms](#) for obtaining detailed information on recommended Axxon Next hardware and software platform

When working with Axxon Next, the user must keep in mind the limitations that the developer imposed on the system in order to ensure its operability. The most important limitations are as follows:

1. Use only Latin characters, Arabic numerals and the minus sign ( - ) to name your computer with Axxon Next will be installed.
2. Never change the computer name after you have installed the system.
3. Synchronize the time among all the networked computers with Axxon Next installed.
4. Enable remote access to the computer with Axxon Next installed using NetBiosName.
5. TCP ports, dynamically specified by OS, are used while connecting the server-client.

To proceed with installation you must have Windows OS administrator rights.

The following two types of installations are available when installing Axxon Next to a personal computer:

1. Server and Client— This type of installation is used to accomplish the following tasks:
  - a. Physical connection to a personal computer and software configuration of video and audio capture devices (video cameras, microphones), event generation devices (sensors, relays, etc.), and hard disks for organizing data archives.
  - b. All tasks accomplished with the Client type of installation (see below).
2. Client – This type of installation is used for installing the software's user interfaces, which enable any user to connect to any server within a single security system and to perform administration/management/monitoring of a guarded location based on the permissions granted by the administrator.

To install the Axxon Next software package, perform the following steps:

1. Power up the PC and load the operating system.
2. Insert the Axxon Next installation CD into the CD-ROM drive.

 Note

Compressed distributive of Axxon Next software package without .NET Framework 2.0 and .NET Framework 3.5 SP1 is available on AxxonSoft website. You have to install this software on your own before the Axxon Next installation.

1. Start the Axxon Next software installation.
2. Install the required configuration of Axxon Next (Server and Client/ Client) with specified Axxon-domain and path of Axxon Next and database, by following setup prompts.

Installation of Axxon Next is now finished.

## Licensing the Software package

After installation the Axxon Next software package is started in demo mode. Worktime period is from 8 am to 6 pm. There are no another limitations which includes functional limitations on software in demo mode.

Activate the Axxon Next software package for full-function operation. To activate the software package distribute the license file in the system.

Data on the types of Axxon Next licenses is presented below.

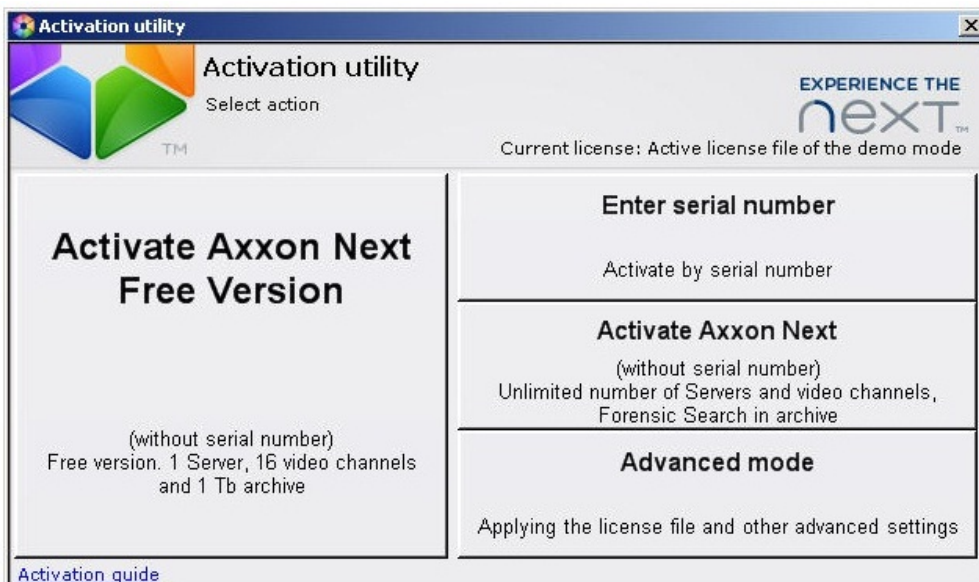
Type of license	Number of servers in the system	Number of video channels per server	Archive volume	Additional features	Cost
Demo mode from 8 AM to 6 PM	Unlimited	Unlimited	Unlimited (limited only by available disk space)	Forensic Search Information boards Archive comments OpenStreetMap	Free
Axxon Next Free Version	1 (fixed)	16 (fixed)	1 terabyte	-	Free
Axxon Next	Unlimited	Unlimited	Unlimited (limited only by available disk space)	Forensic Search (as needed) Line crossing detection Information boards Archive comments OpenStreetMap	Please contact AxxonSoft to inquire about the price

License activation for the Axxon Next software package is carried out through the corresponding utility. Launch the product activation utility using Start menu: Start All programs Axxon Next Utilities Product activation.

Next you should select the name of one of the servers in the Axxon-domain in which the license file is to be distributed (the file will be distributed on all servers of this Axxon-domain which are running at the moment of activation) and connect to the system using the name and password of the Axxon Next software package administrator to continue the activation process.



The main page of the product activation utility will then appear.



It is recommended that you read [Activation guide](#) providing step by step activation instructions.

**Note**

To read this manual click the link in the bottom-left corner on the main page of the product activation utility

## Starting and closing the Axxon Next software

Check readiness for operation of the entire communication environment, cameras, microphones and other system components before starting the system.

To start working with the software, you must perform the following steps:

1. Go to Start All Programs Axxon Next Axxon Next.

Axxon Next's Client will then launch and an authorization window will appear.

2. Enter your user name and password and click Connect.

**Note**

If a remote user is accessing the software, the name of the computer with which the connection is being established should be indicated in the Computer field

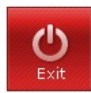

**Note**

When logging into the system for the first time, use the user name root, which has administrator permissions. Enter "root" into the User name and Password fields. The administrator then needs to configure the system for multi-user access.

If authorization is successful, a video surveillance monitor will be displayed on the screen.

Before closing Axxon Next, you need to exit the user interfaces. To do this, you need to do one of the following:



1. Click the  button located under Settings.
2. Select Exit in the context menu of the Axxon Next icon  , which is located on the Windows toolbar when the program window is minimized.




When you perform one of these actions, the authorization window will appear. To close Axxon Next (completely exit the client), click Close.

## Configuring the Axxon Next software package

On page:

- [Prior device configuration](#)
- [Procedure for Configuring System Objects](#)
- [Devices](#)
- [Detectors](#)
- [Archives](#)
- [Roles and Users](#)

The Axxon Next software package's interface consists of three expanding menus:

1. Layouts 
2. Alerts 
3. Settings 

Use the Settings menu to configure Axxon Next.

## Prior device configuration

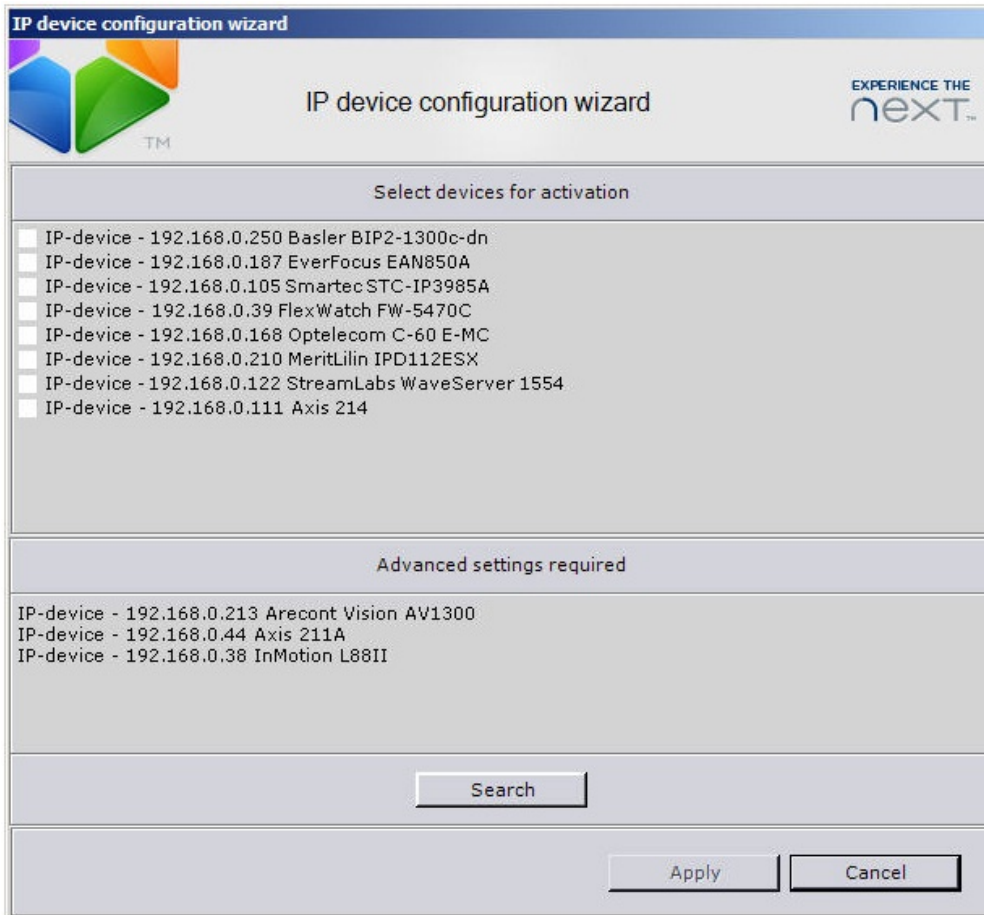
The following prior operations are to be performed at the first launch of Axxon Next software package:

1. select IP-devices for registration as Objects;
2. configure the archive on default for selected objects.

First of all, click Yes in the IP device configuration wizard dialog box (1)



As the result the IP device configuration wizard opens.



Launch of this configuration wizard is followed by auto search of connected IP devices. Found devices are displayed in Select devices for activation list.

Set checkboxes next to those devices that should be registered as Axxon Next software objects in Select devices for activation list. Click Apply.

Click Search to start the IP devices search again.

After clicking the Apply button the user will be suggested to configure archives on default for video cameras (IP devices) selected at the first step.

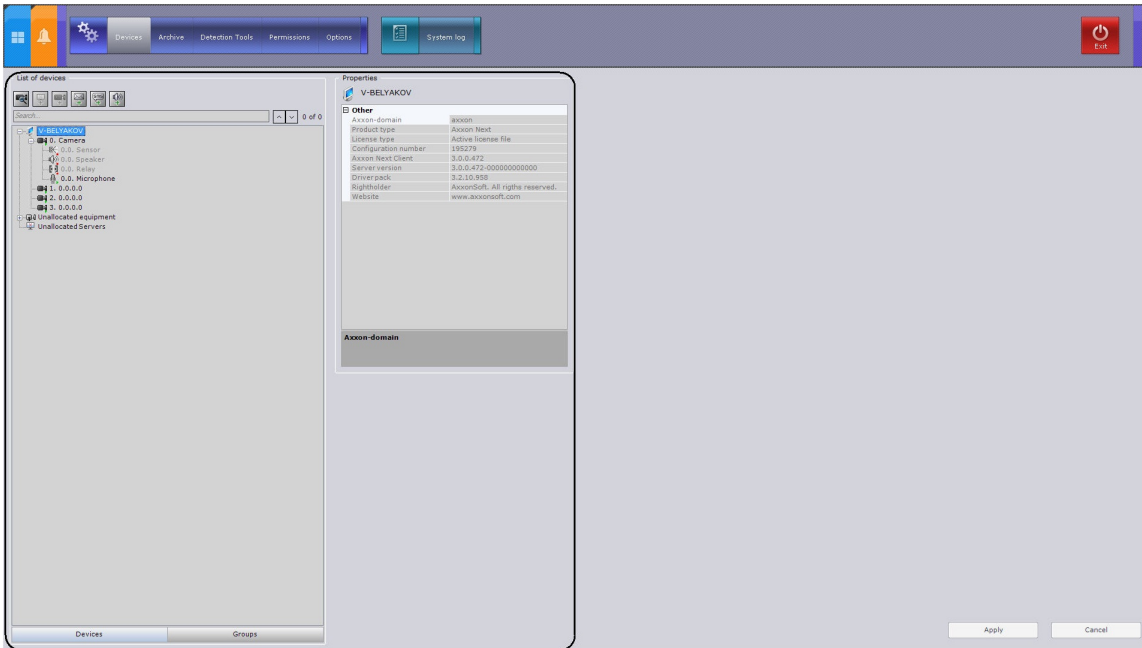
Archive files of specified size will be created on all selected disks when archives are created through the IP device configuration wizard. These files will be logically combined into one archive to which records from all video cameras configured through this wizard will be stored.

**⚠ Attention!**

It is not recommended to specify the File value of the Type section parameter when archives are created. Select the Logic disk value for this parameter. It is possible to do only through the Axxon Next software interface (see [Creating archives](#))

## Procedure for Configuring System Objects

System objects form the basis for configuring the Axxon Next software package; you can set them up using the Settings menu.



Identifying and managing devices physically connected to a server, creating users with varying permissions, and creating rules and automatic responses are just a few of the things the user can do by creating and configuring system objects.

The procedure for working with system objects varies slightly depending on their type, but generally you should adhere to the following sequence of actions:


1. Create an object.
2. Configure its parameters.
3. Save changes.
4. Edit the values of parameters.
5. Save changes.

It is necessary to save changes if the object was deleted.

Some system object parameters have a set range of values. In this case you must select the appropriate value from a list. Other parameters serve to display information, while yet others must be set manually according to the recommendations in the parameter's description (as a rule, the parameter description is displayed in a special area under the object properties table when the parameter is selected).

As is evident from the sequence listed above, any changes made during configuration should be saved by clicking the Apply button. Changes will be applied without software restart after clicking the Apply button. Before you click the Apply button, the changes may be cleared using the Cancel button.

## Devices

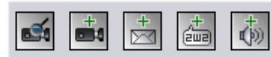
System objects corresponding to physically connected devices appear in the system as a result of the device search. To search for a device, use the  button on the Device tab.

Devices found are displayed with their IP addresses as an Unallocated equipment list.

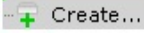
The desired unallocated equipment must be linked to a server, after which it will be displayed in the list of devices on the server and will be accessible as Camera or IP Server for further configuration.

The object tree of Camera and IP server objects is generated automatically according to its functions which are integrated into the Axxon Next software package (the presence of alarm inputs, relay outputs, a pan/tilt unit, etc.).

You can also create objects in Axxon Next either using the



tools located

above the object tree or using the  button, depending on the object type. You can then configure the objects and save changes.

## Detectors

In the Axxon Next software package, several types of detectors process incoming data:

1. Situation analysis detectors.
2. Video detectors.
3. Audio detectors.
4. Detectors embedded in a video camera:
5. Detectors which process signals from the video camera's sensor.

Detector setup takes place using the interface in the Detectors tab (under Settings). In order for certain actions to be executed when a detector is triggered, you must configure automatic rules. The rules configuration is to be done in configurations of the corresponding detector.

## Archives

You can configure archives using the interface in the Archive tab (under Settings).

An archive can be distributed on several volumes of the server. On one volume for one archive you can create only one partition, which occupies either a file of a set size or the entire volume. You can configure archives as follows:

1. Create archives with the desired parameters.
2. Configure recording of the video stream from video cameras to the archive.

## Roles and Users

In Axxon Next, only one role (Administrator) and one user (root) are registered by default; their deletion is prohibited. Administrators possess permissions to configure all components of the video surveillance system. To register an operator with individual permissions, you must create a new role with those permissions and a new user account for that user.

Registration and configuration of roles and users is carried out through the Permissions tab in Settings.

## Operating the Axxon Next software package

On page:

- [Viewing tile](#)
- [Information boards](#)
- [Interactive Map](#)
- [Layouts](#)
- [The Archive Navigation Panel](#)
- [The archive search mode](#)
- [The PTZ Control Panel](#)

This guide briefly discusses the operation of the following main elements of the User Interface:

1. Viewing Tile.
2. Information boards.

3. Interactive Map.
4. Layouts.
5. Archive Navigation Panel.
6. The Archive search mode.
7. PTZ Control Panel.

You can access them using the Layouts menu.

**Note**

The viewing tile can be displayed on the Alerts menu to evaluate alert events occurred

## Viewing tile

The viewing tile is used to display video stream on the computer monitor with specific parameters and to monitor the forensic search in archive. The viewing tile also has a function which allows the generation and evaluation of alert events in the process of video monitoring of a guarded location.



The viewing tile context menu is used to access the following functions (depending on the enabled surveillance mode: real time, archive or alert):

**Note**

To select the video surveillance mode, use the tabs in the lower right-hand part of the viewing tile

1. Video surveillance.
2. Audio monitoring.
3. Exporting frames and recordings.
4. Object tracking.
5. Displaying of sensor current state.
6. Relay management.

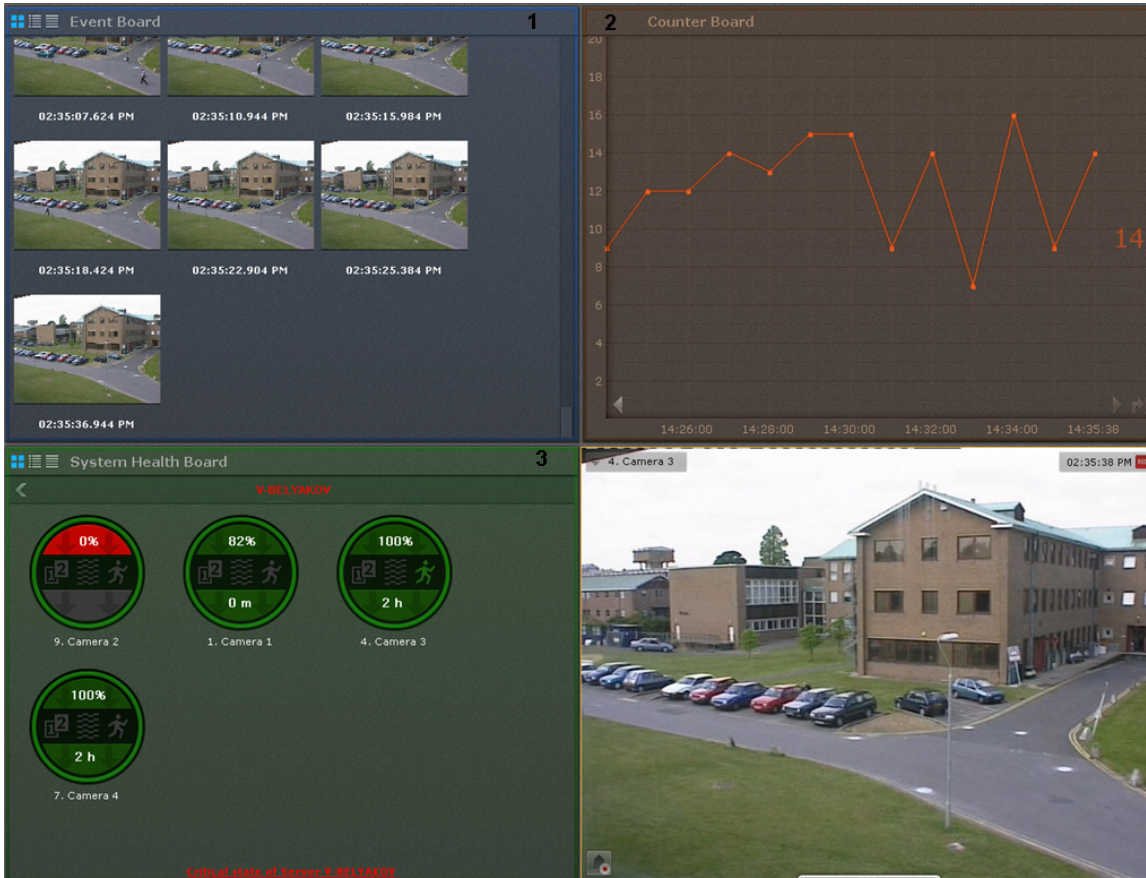
To bring up the viewing tile context menu, left-click the video camera icon in the upper left-hand

corner of the tile.

## Information boards

Information boards offer a quick view of system status and events. There are three kinds of information boards, each displaying a specific type of information:

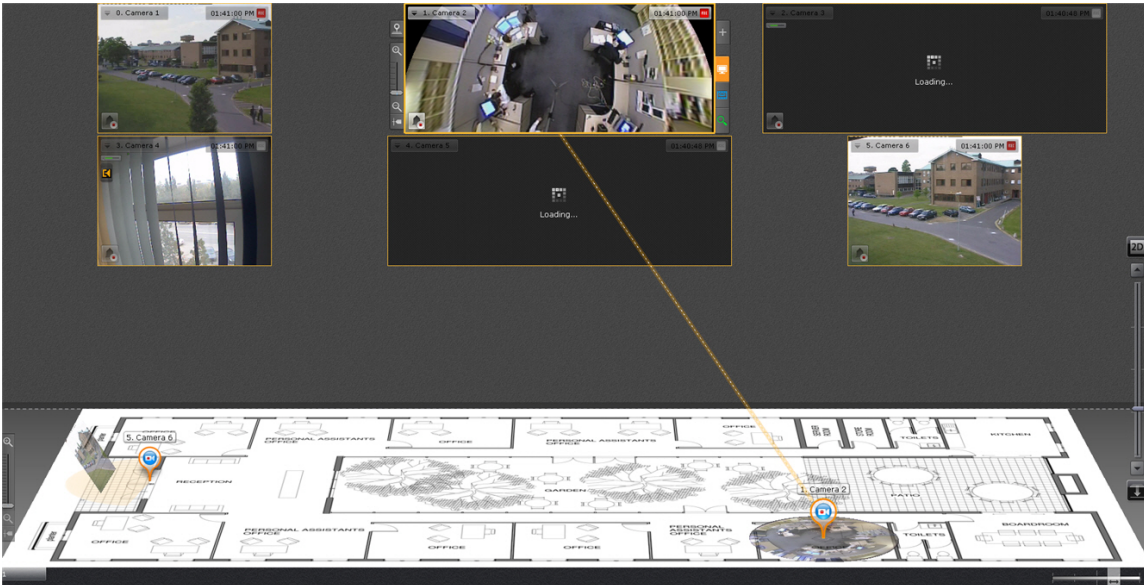
1. Events Board (1).
2. Health Board (2).
3. Counter Board (3).



## Interactive Map

The 3D interactive map is used to visualize the secured facility, control cameras and identify cameras' location.

Interactive maps in Axxon Next can obtain image data from graphics of the site or geospatial data from OpenStreetMap.



The map can contain icons for cameras, relays, and sensors. The area in which live video is displayed and field of view are indicated for each camera.

The interactive map allows controlling the objects from the context menus of the graphical symbols on the map showing the states of the corresponding objects.

You can use the interactive map in three modes;

1. 3D mode, in which both the map and layout are available
2. 2D mode, in which only the map is available
3. immersion mode, in which video is overlaid on the map

## Layouts

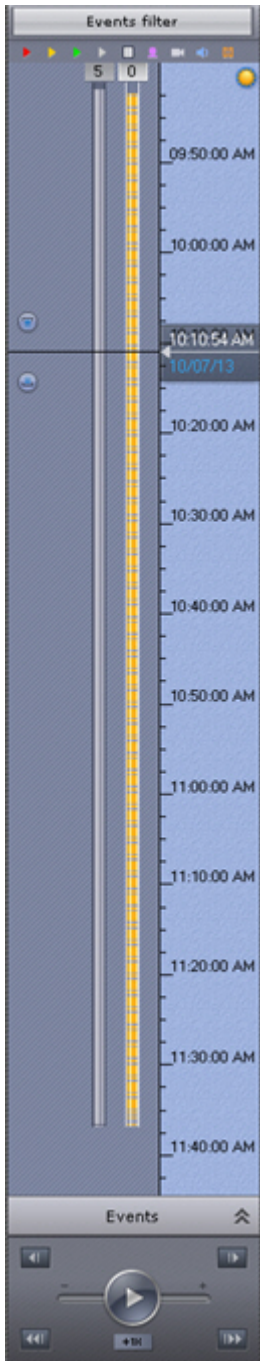
An Axxon Next operator is granted access to work with the layouts ribbon. The layouts ribbon can operate in a user-defined mode or a standard mode of operation.



By default, the user mode is enabled for the layouts ribbon. The operating mode of the layouts ribbon can be specified in the Settings Options User interface tab.

## The Archive Navigation Panel

The archive navigation panel is automatically displayed in the right-hand part of the screen when you switch the viewing tile to archive mode or forensic search in archive.

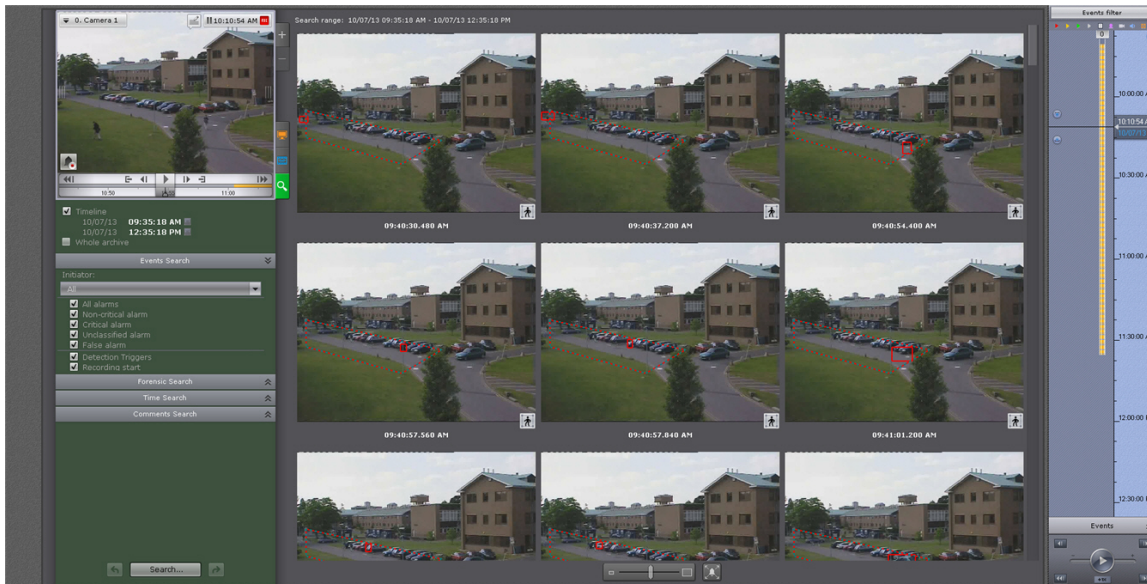


The archive navigation panel is used for the following functions:

1. Navigating through the archive.
2. Playing back recordings.
3. Selecting playback mode: forward or backward.
4. Setting playback speed.
5. Selecting events for display on the timeline and in the events list.
6. Viewing the list of events of the selected type.

## The archive search mode

The archive search mode is used to search the video fragments in the archive and to analyse them.



Three search types are available in the archive search mode:

1. Events search.
2. Forensic search.
3. Time search.
4. Searching comments.

Forensic search allows to search the video fragments by following criteria:

1. Motion in Area + two subcriteria:
  - loitering of an object in a specific area;
  - simultaneous presence of a large number of objects in a specific area.
2. Crossing of a virtual line by an object's trajectory.
3. Motion from one area to another.

## The PTZ Control Panel

The PTZ control panel is displayed automatically in the right-hand part of the screen when the viewing tile of a PTZ camera is activated in real time mode.



The PTZ control panel is used for the following functions:

1. Controlling PTZ video cameras.
2. Setting and switching to camera presets.
3. Launching/stopping patrolling.